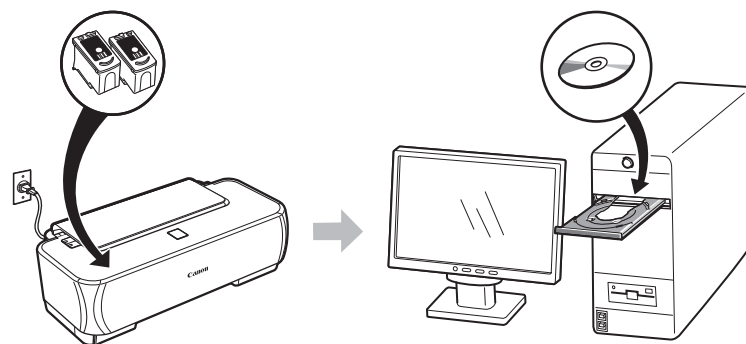




PIXMA iP1900

Getting Started



Make sure to read this manual before using the printer. Please keep it in hand for future reference.



Contents

1 Remove the Protective Material

2 Turn the Power On



3 Install the FINE Cartridges



4 Install the Software



5 Loading Paper

After Installing the Printer

■ Symbols

The following symbols are used to mark important instructions. Observe these instructions.



Instructions that, if ignored, could result in personal injury or material damage.



Instructions that must be observed for safe operation.



Additional explanations.



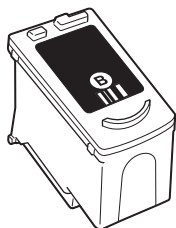
Descriptions for operations that take some time to complete.

- Microsoft is a registered trademark of Microsoft Corporation.
- Windows is a trademark or registered trademark of Microsoft Corporation in the U.S. and/or other countries.
- Windows Vista is a trademark or registered trademark of Microsoft Corporation in the U.S. and/or other countries.
- Macintosh and Mac are trademarks of Apple Inc., registered in the U.S. and other countries.

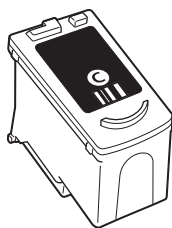
Model Number: K10328(iP1900)

Remove the Protective Material

First, check the included items

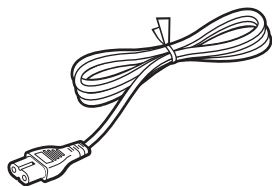


Black



Color

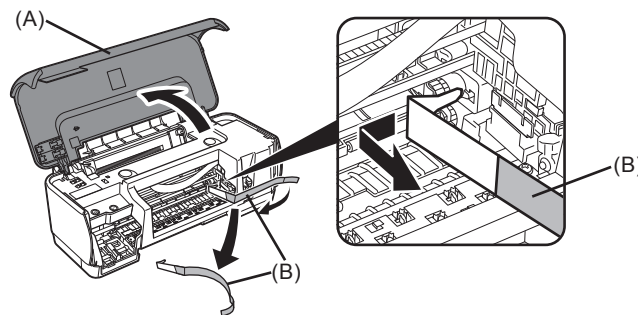
FINE cartridge



power cord

- Manuals
- Setup CD-ROM (containing the drivers, applications and on-screen manuals)
- Warranty

1



Open the Cover (A), then remove the protective material (B).

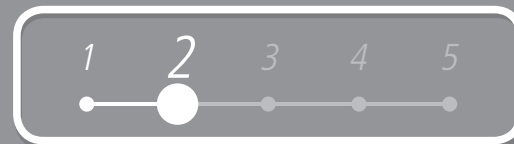
Close the Cover (A) after removing the protective material (B).



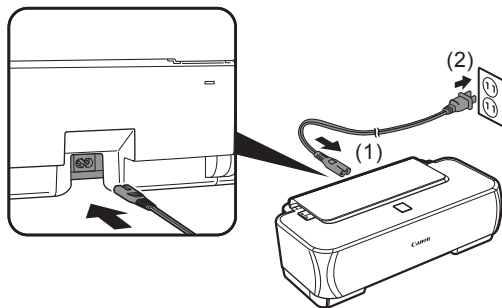
- Remove the protective sheets before opening the Cover.
- Before turning on the printer, remove all the orange tapes.

2

Turn the Power On

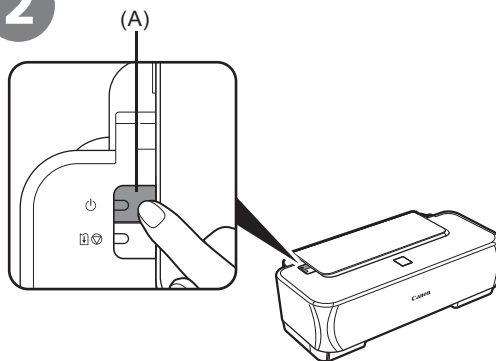


1



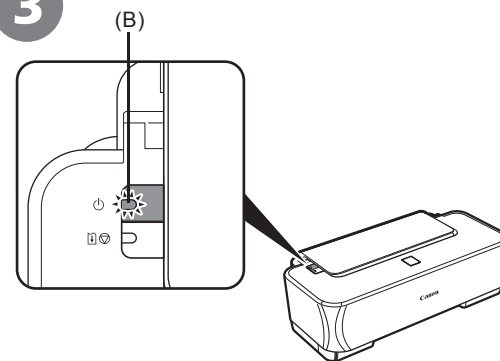
Plug in the power cord in the back of the printer and connect the other end to the wall outlet.

2



Press the **ON** button (A) to turn on the printer.

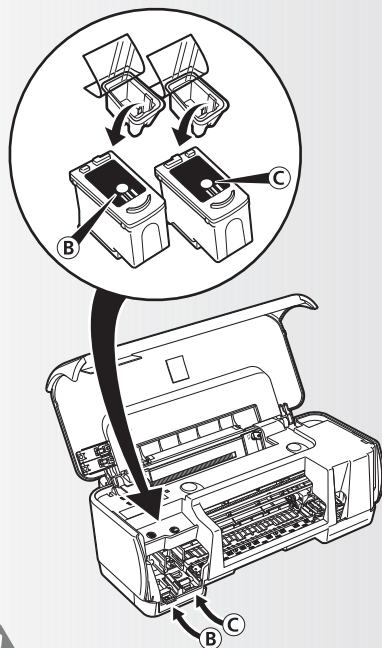
3



Confirm that the **POWER** lamp (B) flashes green.



- Do NOT connect the USB cable at this stage.

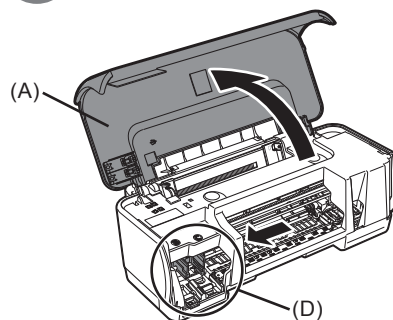


- Do not handle the FINE Cartridges roughly such as applying them excessive pressure or dropping them.



- Be sure to use the supplied FINE Cartridges.

1



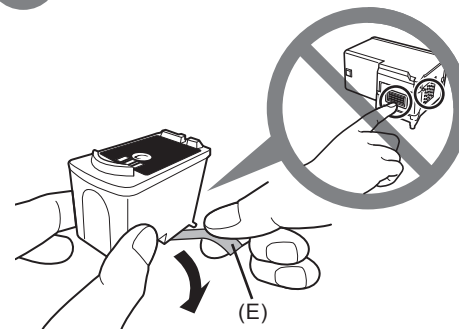
Open the Cover.

The FINE Cartridge Holder (D) moves to the left automatically. (This is where you install the cartridge.)



- If the FINE Cartridge Holder returns to the right, close the Cover and reopen it. If the FINE Cartridge Holder does not come out to the left, make sure that the power is turned on.

2



Pull the orange protective tape (E) in the direction of the arrow and remove it gently.



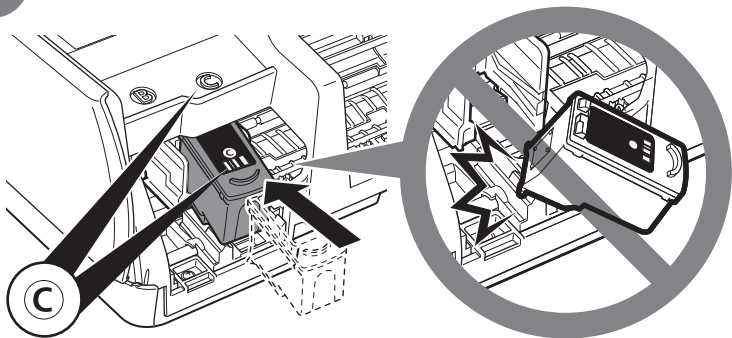
- Be careful not to stain your hands or surrounding work area with ink on the removed protective tape.



3

Install the FINE Cartridges

3



Insert the Color FINE Cartridge (C) into the right slot (C).

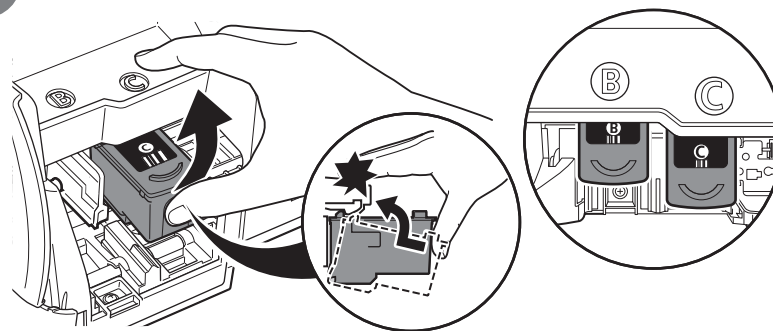


- Do not knock the FINE Cartridge against the sides of the holder.



- Insert the Color FINE Cartridge into the right slot, and the Black one into the left slot.

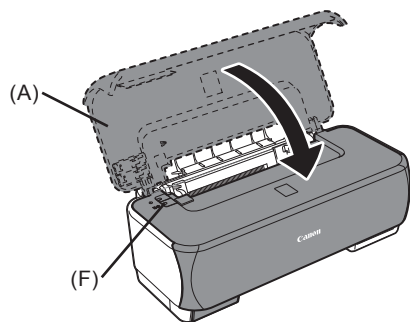
4



Push up the cartridge until it clicks into place.

Insert the Black FINE Cartridge (B) into the left slot (B) in the same way.

5



Close the Cover (A).



- Wait until the **POWER** lamp lights green (about 1 - 2 minutes) and go to the next step.



-
- Once you have installed the FINE Cartridges, do not remove them unnecessarily.



-
- If the **alarm** lamp (F) is flashing orange, make sure that the FINE Cartridges are correctly installed.
-

4

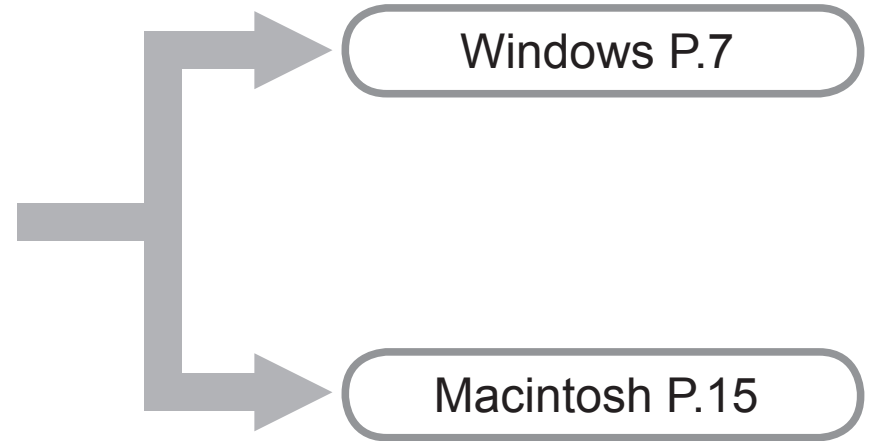
Install the Software

To use the printer by connecting it to a computer, software including the drivers needs to be copied (installed) to the computer's hard disk.

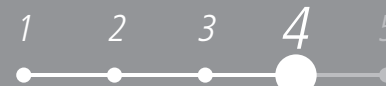
The screens below are based on Windows Vista operating system Ultimate Edition (hereafter referred to as "Windows Vista") and Mac OS X v.10.5.x.



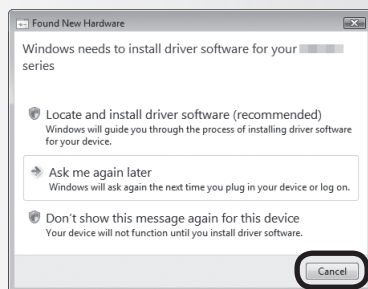
- Quit all running applications before installation.
- You need to log on as the administrator (or a member of the Administrators group).
- Do not switch users during the installation process.
- It may be necessary to restart your computer during the installation process. Follow the on-screen instructions and click **OK**, and do not remove the *Setup CD-ROM* during restarting. The installation resumes from where it left off when your computer has been restarted.
- Mac OS 9, Mac OS X Classic environments, or Mac OS X v.10.3.8 or earlier are not supported.



Windows

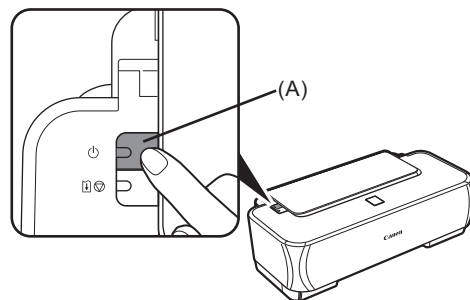


If the **Found New Hardware** or **Found New Hardware Wizard** screen appears:



- 1 Remove the USB cable connected to your computer.
The screen may close. In this case, proceed from ①.
- 2 Click **Cancel** to quit the screen.
- 3 Proceed from ①.

1

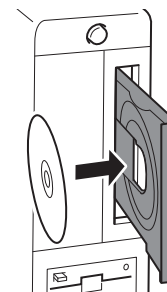


Press the **ON** button (A) to **TURN OFF** THE PRINTER.



- Operating noise continues for about 15 seconds until the power turns off. Make sure that the **POWER** lamp stops flashing.

2



Turn on the computer, then insert the *Setup CD-ROM* into the CD-ROM drive.

The setup program should run automatically.



Windows Vista



Go to Step ③

Windows XP/2000



Go to Step ⑤



- If the program does not start automatically, double-click the CD-ROM icon on the computer. When the CD-ROM contents appear, double-click **MSETUP4.EXE**.

3

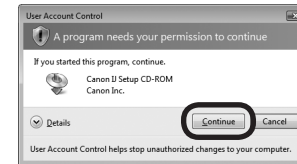
Windows Vista



AutoPlay screen appears, click **Run Msetup4.exe**.

4

Windows Vista



User Account Control screen appears, click **Continue**.

If the same screen reappears in subsequent steps, click **Continue**.

5

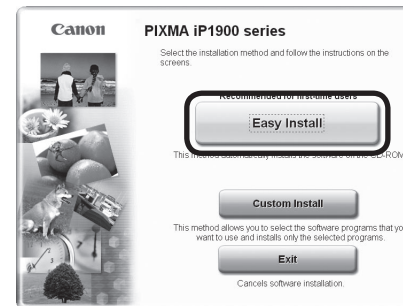


When the **Select Your Place of Residence** screen appears, select your place of residence, then click **Next**.



- If the **Select Language** screen appears, select a language, then click **Next**.

6



Click **Easy Install**.

The drivers, application software, and on-screen manuals are installed automatically.



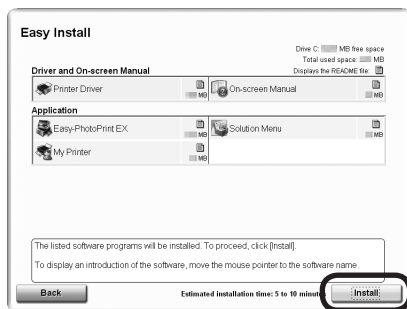
- If you want to select particular items to install, click **Custom Install** and follow the on-screen instructions to proceed with the installation.



4

Windows

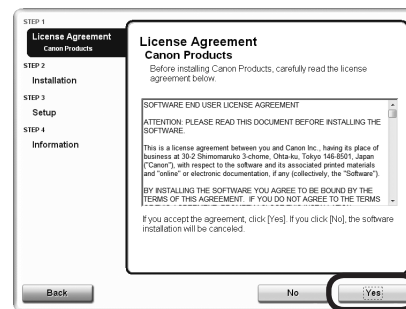
7



Click **Install**.

Move the cursor over items to display explanations.

8



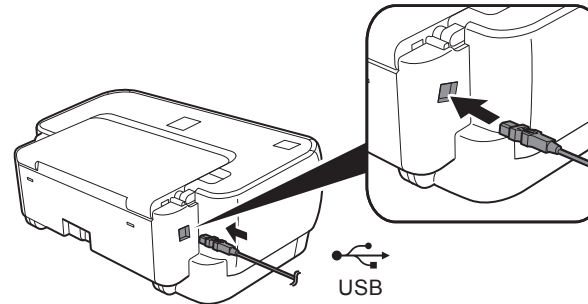
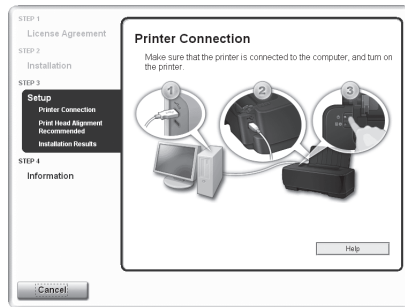
If you can agree, click **Yes** on the **License Agreement** screen.

Installation starts.

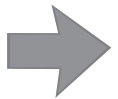


- Follow any on-screen instructions to install the software.

9



When the **Printer Connection** screen appears, connect one end of the USB cable to the computer, the other to the printer, then **TURN THE PRINTER ON**.

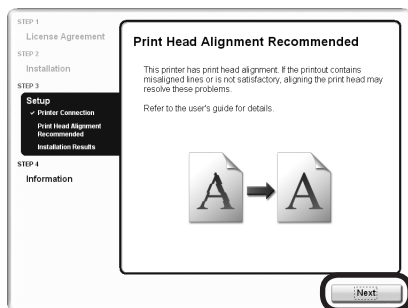


- It takes about 25 seconds for the **POWER** lamp to light green.
- When the printer is recognized by the computer, a message appears on the screen.
- If you cannot go to the next procedure after 2 minutes, click **Help** and confirm the message.



- The USB port is located on the right side of the back of the printer.

10

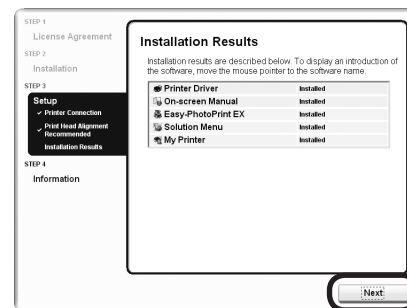


Click **Next**.



- If straight lines are misaligned or print quality is not satisfactory after installing the printer driver, you may need to align the Print Head. Refer to "When Printing Becomes Faint or Colors Are Incorrect" in the on-screen manual: *Basic Guide*.

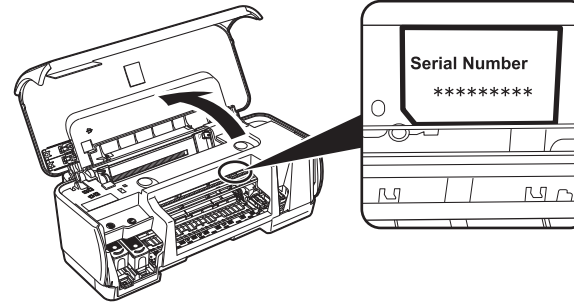
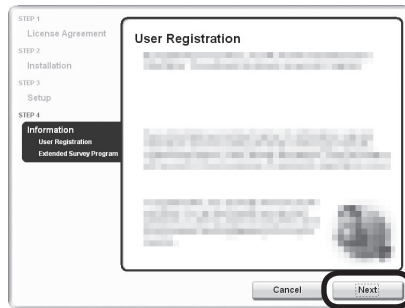
11



Click **Next**.

It may take a while for the next screen to appear. Click **Next** only once.

12



Click **Next**.

If connected to the internet, the user registration page appears. Follow the on-screen instructions to register your product. You will need your product serial number, which is located on the inside of the printer.

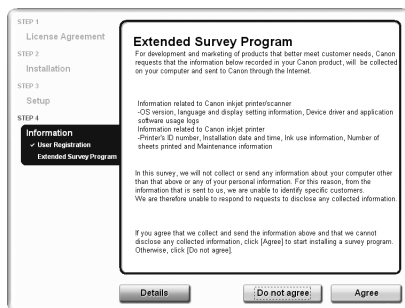


- Internet connection is required. (Connection fees apply.)



- To register later, click **Cancel**. User Registration can be started from the Solution Menu icon. For details, refer to “Solution Menu” on page 23.
- The **User Registration** screen will only be displayed when **Europe, Middle East, Africa** is selected on the **Select Your Place of Residence** screen.

13

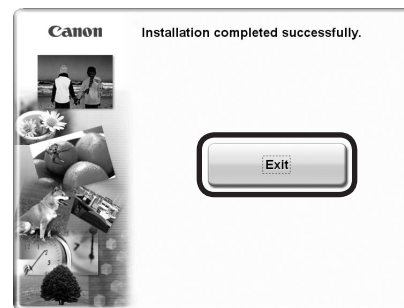


When the **Extended Survey Program** screen appears, confirm the message.

If you can agree, click **Agree**.

If you click **Do not agree**, the Extended Survey Program will not be installed. (This has no effect on the printer's functionality.)

14



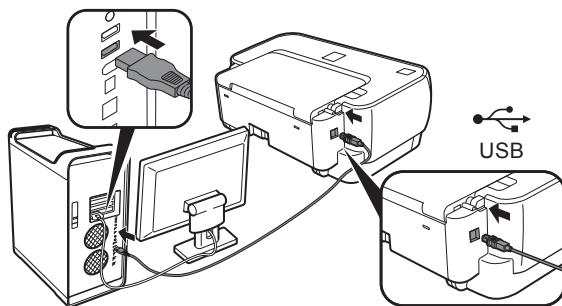
Click **Exit**.

Remove the *Setup CD-ROM*.

If Restart is displayed, make sure that the **Restart the system now (recommended)** check box is selected, then click **Restart**. Remove the CD-ROM after clicking **Restart** and restarting the computer.

Next, read “5 Loading Paper” on page 21!

1



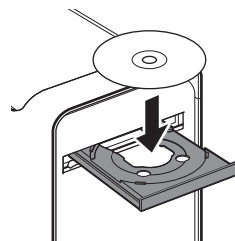
Connect one end of the USB cable to the computer and the other to the printer.

Make sure the printer is turned on.



- The USB port is located on the right side of the back of the printer.

2



Turn on the computer, then insert the *Setup* CD-ROM into the CD-ROM drive.

3



Double-click the **Setup** icon.

If the CD-ROM folder does not open automatically, double-click the **CANON_IJ** icon on the desktop.



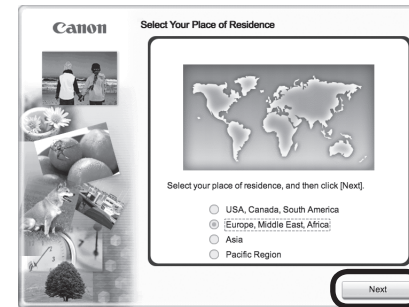
4



Enter your administrator name and password. Click **OK**.

If you do not know your administrator name or password, click **Help**, then follow the on-screen instructions.

5

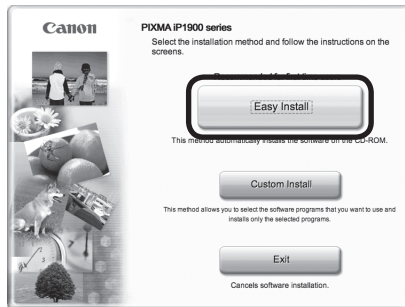


When the **Select Your Place of Residence** screen appears, select your place of residence, then click **Next**.



- If the **Select Language** screen appears, select a language, then click **Next**.

6



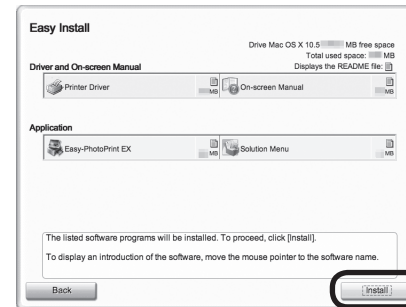
Click **Easy Install**.

The drivers, application software, and on-screen manuals are installed automatically.



- If you want to select particular items to install, click **Custom Install** and follow the on-screen instructions to proceed with the installation.

7

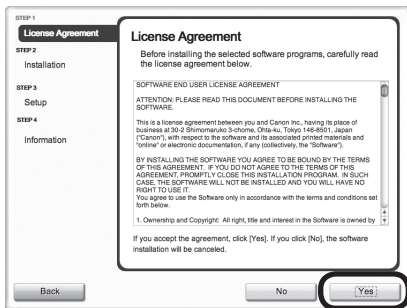


Click **Install**.

Move the cursor over items to display explanations.



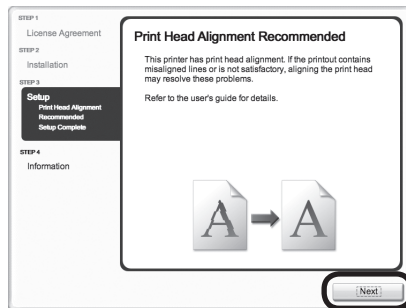
8



If you can agree, click **Yes** on the **License Agreement** screen.

Installation starts.

9



Click **Next**.



- If straight lines are misaligned or print quality is not satisfactory after installing the printer driver, you may need to align the Print Head. Refer to “When Printing Becomes Faint or Colors Are Incorrect” in the on-screen manual: *Basic Guide*.

10

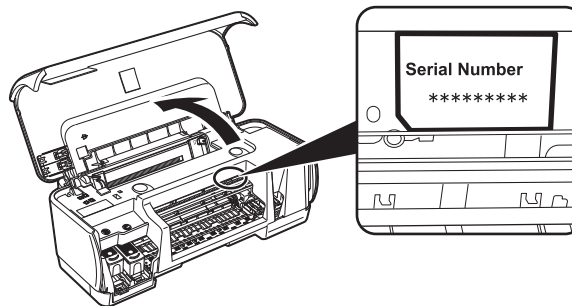
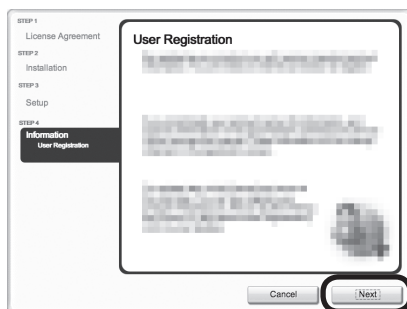


Click **Next**.



- The **Setup Complete** screen will only be displayed when **Europe, Middle East, Africa** is selected on the **Select Your Place of Residence** screen.

11



Click **Next**.

If connected to the internet, the user registration page appears. Follow the on-screen instructions to register your product. You will need your product serial number, which is located on the inside of the printer.



- Internet connection is required. (Connection fees apply.)



- To register later, click **Cancel**. User Registration can be started from the Solution Menu icon. For details, refer to “Solution Menu” on page 23.
- The User Registration screen will only be displayed when **Europe, Middle East, Africa** is selected on the **Select Your Place of Residence** screen.

12



Click **Restart**.

Click **Restart** to restart the computer.

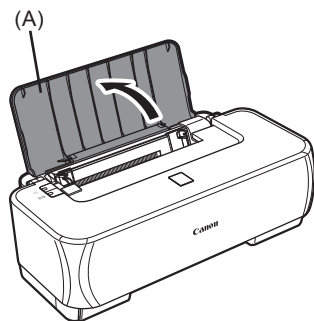
After restarting the computer, remove the *Setup CD-ROM* and keep it in a safe place.

Next, read “5 Loading Paper” on page 21!

5 Loading Paper

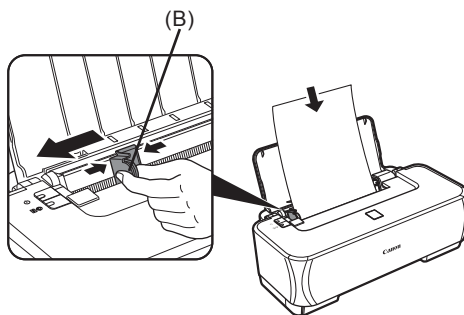


1



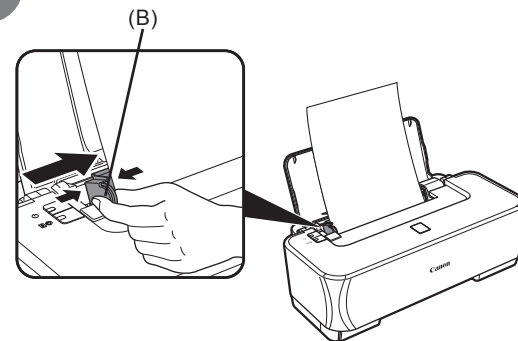
Open the Paper Support (A).

2



Pinch the Paper Guide (B) and slide it to the left end, then load paper.

3



Slide the Paper Guide (B) against the left edge of the paper.



- Load paper in portrait orientation with the printing side facing up.
- Slide the Paper Guide to fit to the loaded paper.



- For details on how to handle paper, refer to "Loading Paper" in the on-screen manual: *Basic Guide*.

Printer installation is now complete!



After Installing the Printer

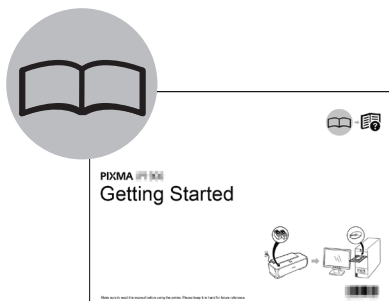
■ Manuals

Safety Precautions



Safety and Environment Information

For proper use, read safety precautions before using the product.



Getting Started (this manual)

Describes how to set up and use your printer. Introduces the printer and its functions, the included manuals and application software.



Basic Guide (on-screen manual)

Describes the basic operations and gives an introduction to other functions available.



Advanced Guide (on-screen manual)

Describes various operating procedures to make full use of the printer. Also includes “Troubleshooting” information for your printer.

■ Solution Menu

Solution Menu is a gateway to functions and information that allow you to make full use of the printer!



Example:



Open various applications and on-screen manuals with a single click.

You can start Solution Menu from the **Canon Solution Menu** icon on the desktop (Windows) or on the Dock (Macintosh).

If you have a problem with printer settings, click the **Change settings or find solutions to problems.** icon in Solution Menu to open My Printer.

*The buttons displayed vary depending on the country or region of purchase.

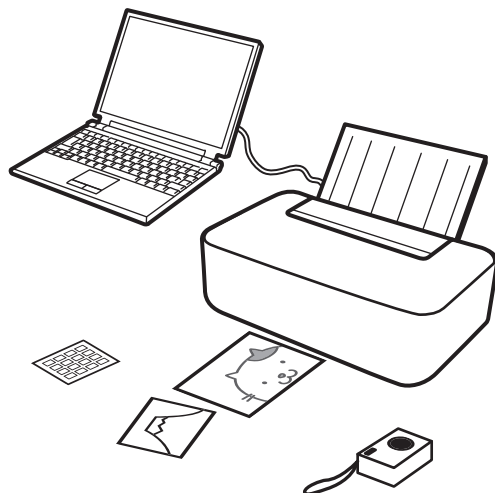


After Installing the Printer

■ Using Your Printer

This printer allows you to print in various ways using the printer driver and application software installed on the computer. For example, you can print borderless photos or create your own calendar etc. easily.

For detailed operating procedures and functions, refer to the on-screen manuals.



Hereafter, using the printer!



Print Photos from a Computer

Easy-PhotoPrint EX allows you to print photos easily.

This section explains how to print on 4" x 6" size Photo Paper Plus Glossy II. The screens are based on Windows Vista.

1



In Solution Menu, click **One-Click to Photo Print**.

Easy-PhotoPrint EX starts.

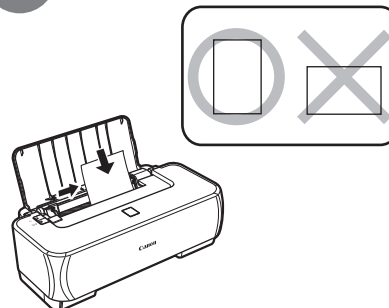
2



Select the image you want to print in a folder, then click **Layout/Print**.

When a photo is selected, the number of copies is set to 1.

3



Load a sheet of paper in the rear tray in portrait orientation.

Load paper with the printing side facing up.

4



Click **Print**.

Printing will start.



- For opening Solution Menu, refer to "Solution Menu" on page 23.
- For more information refer to the on-screen manual: *Advanced Guide*.






- For details, refer to "5 Loading Paper" on page 21.





- The printer may make operating noise when feeding paper.

Specifications

General Specifications	
Printing resolution (dpi)	4800 (horizontal)* x 1200 (vertical) * Ink droplets can be placed with a pitch of 1/4800 inch at minimum.
Interface	USB
Print width	8 inches / 203.2 mm max. (for Borderless Printing: 8.5 inches / 216mm)
Acoustic noise level	Approx.44.0 dB(A) * When printing in the standard print quality mode on Photo Paper Plus Glossy II.
Operating environment	Temperature: 5 to 35°C(41 to 95°F) Humidity: 10 to 90%RH(no condensation)
Storage environment	Temperature: 0 to 40°C(32 to 104°F) Humidity: 5 to 95%RH(no condensation)
Power supply	AC 100-240V, 50/60 Hz
Power consumption	Printing: Approx. 8 W Standby: Approx.1.0 W OFF: Approx. 0.6 W
External dimensions	Approx. 17.4(W) x 9.3(D) x 6.0(H) inches / Approx. 442(W) x 237(D) x 152(H) mm * With the Paper Support and Paper Output Tray retracted.
Weight	Approx. 3.3 kg(Approx. 7.3 lb) * With the FINE Cartridges installed.
CANON FINE Cartridges	Black: 320 nozzels Color: 384 x 3 nozzels

Minimum System Requirements		
 Conform to the operating system's requirements when higher than those given here.		
		
Operating System Processor RAM	Windows Vista 1 GHz processor 512 MB Windows XP SP2 300 MHz processor 128 MB Windows 2000 Professional SP4 300 MHz processor 128 MB Note: Operation can only be guaranteed on a PC with Windows Vista, XP or 2000 pre-installed.	Mac OS X v.10.5 Intel processor, PowerPC G5, PowerPC G4 (867 MHz or faster) 512 MB Mac OS X v.10.4 Intel processor, PowerPC G5, PowerPC G4, PowerPC G3 256 MB Mac OS X v.10.3.9 PowerPC G5, PowerPC G4, PowerPC G3 128MB Note: Hard Disk must be formatted as Mac OS Extended (Journaled) or Mac OS Extended.
Browser	Internet Explorer 6.0 or later	Safari
Hard Disk Space	450 MB Note: For bundled software installation.	550 MB Note: For bundled software installation.
CD-ROM Drive	Required	
Display	SVGA 800 x 600	XGA 1024 x 768
• To upgrade from Windows XP to Windows Vista, first uninstall software bundled with the Canon inkjet printer.		

Additional System Requirements for the on-screen manuals	
	
Browser: Easy Guide Viewer Note: Microsoft Internet Explorer 6.0 or later must be installed. The on-screen manual may not be displayed properly depending on your operating system or Internet Explorer version. We recommend that you keep your system up to date with Windows Update.	Browser: Help Viewer Note: The on-screen manual may not be displayed properly depending on your operating system. We recommend that you keep your system up to date.

Specifications are subject to change without notice.

About Consumables

Consumables (ink tanks / FINE Cartridges) are available for 5 years after production has stopped.

The following ink cartridges are compatible with this product.



www.canon-europe.com
canon.com.au
canon.co.nz