



Jaco Drawer Insert Tray, 4 Compartment Storage, No Lids

Part Number: 51-4110

Quote Description: INSERT, TRAY, 4 COMPT

Product Group: HC-Options - Drawers

Minimum Order Qty: 1

Weight: 3.00 LB

Length: 13.00"

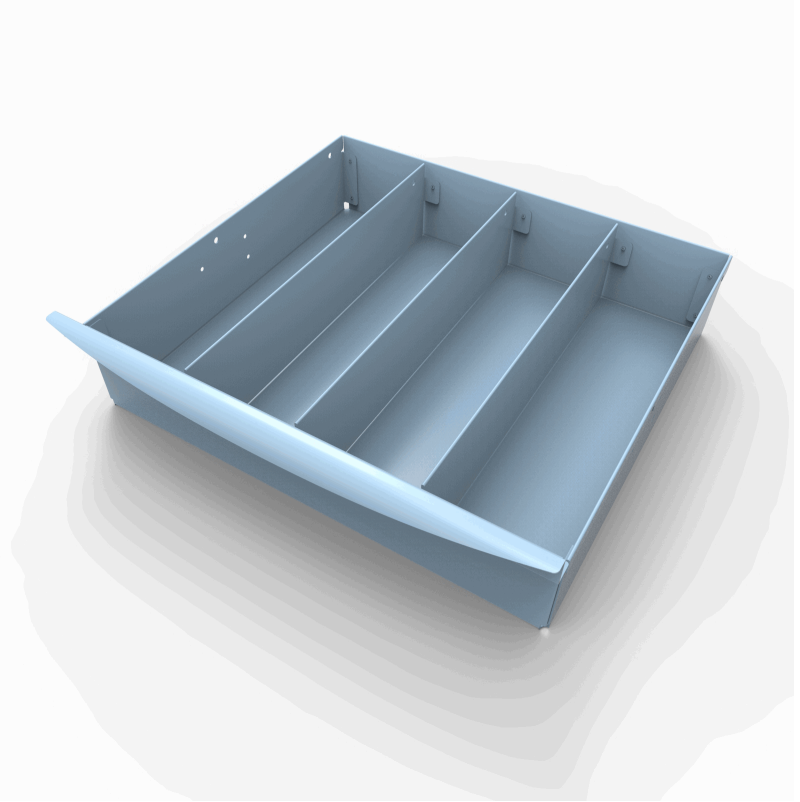
Width: 13.50"

Height: 3.75"

Warranty: 7 Year Structural

Product Description:

Add additional storage to your Jaco Cart with our configurable drawer system. Choose from 3 inch or 7 inch drawers with a variety of locking mechanisms, storage compartments, or removable bins.



Product Compatibility:

100: No	200: Yes	310: Yes	510: Yes	J1-10: No	WS-14: No
105: No	210: Yes	320: Yes	510-L250: Yes	J1-10-L250: No	WS-25: No
160: No	220: Yes		510-L500: Yes	J1-10-L500: No	
	225: Yes				
			520: Yes	J1-20: No	WA-40: No
			520-L250: Yes	J1-20-L250: No	WA-60: No
			520-L500: Yes	J1-20-L500: No	WA-80: No

Additional Compatibility Notes:

Med Tray with front handle, for non-lock/e-lock 3" drawers. Replace drawer with 51-3705.

