



Quick Installation Guide



TEW-421PC

TEW-423PI

H/W: C1.0R

Table of Contents

English	1
1. Before You Start	1
2. How to Install	2
3. Using the Wireless Adapter	4
Troubleshooting	6

1. Before You Start



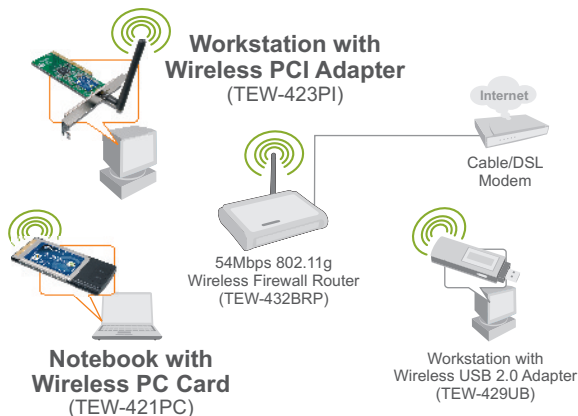
Package Contents

- TEW-421PC/TEW-423PI
- Utility & Driver CD-ROM
- Quick Installation Guide

System Requirements

- 32-bit CardBus Type II Card slot (TEW-421PC)
- 32-bit PCI 2.2 slot (TEW-423PI)
- CD-ROM Drive
- CPU: 300Mhz or above / 800MHz or above (Windows Vista)
- Memory: 256MB RAM or above / 512MB RAM or above (Windows Vista)
- Windows Vista/XP/2000/ME/98SE

Application



54Mbps Wireless

2. How to Install

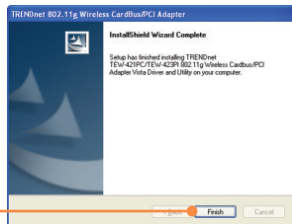
Important! DO NOT install the PCI adapter or PC Card in the computer until instructed to do so.

For Windows Users

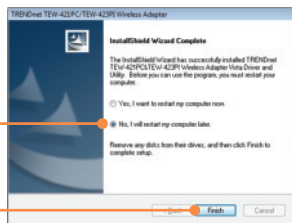
1. Insert the **Utility & Driver CD-ROM** into your computer's CD-ROM Drive and then click **Install Utility**. Then click your operating system.



2. Follow the **InstallShield Wizard** instructions and then click **Finish**.



3. Select **No, I will restart my computer later** and then click **Finish**. (Windows 98SE, Me and Vista only)



TEW-421PC

4. Shutdown your computer.



5. Insert PC Card firmly into an available PC Card slot on the notebook PC and then turn **ON** the computer and wait until the Windows desktop appears.



6. Go to **Step 10**.

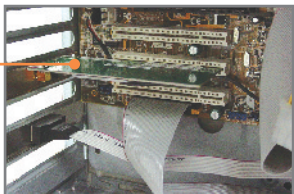
TEW-423PI

7. **Shutdown** your computer.

8. Open your computer's case.



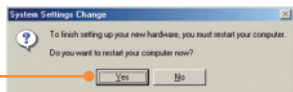
9. Insert PCI Card firmly into an available PCI Card slot on the desktop PC, attach the included antenna, and then turn **ON** the computer and wait until the Windows desktop appears.



Windows XP/2000

10. Drivers will install automatically.

11. Click **Yes** to restart your computer (Windows 98SE and Me only).



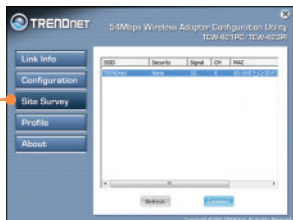
3. Using the Wireless Adapter

Windows Vista

1. On the bottom right-hand corner of the screen, **double-click** on the **Wireless LAN Configuration Utility** icon



2. Click **Site Survey**. Select the desired wireless network and then click **Connect**.



3. If Encryption is enabled on your access point, select the **Authentication** method and **Encryption** type, and then enter the encryption key. Then click **Apply**.



Windows XP/2000/ME/98SE

Note: Windows XP Wireless Zero Configuration utility must first be disabled. Please refer to question 4 of the Troubleshooting section.

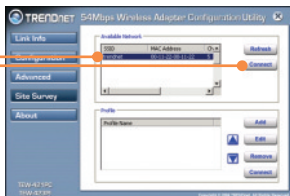
1. On the bottom right-hand corner of the screen, **double-click** on the **wireless LAN Configuration utility** icon



2. Click **Site Survey**.



3. Click the **SSID** that matches your wireless access point and then click **Connect**.



4. If Encryption is enabled on your access point, select the **Authentication** method and **Encryption** type, and then enter the encryption key. Then click **Apply**.



Wireless configuration is now complete.

For detailed information regarding the TEW-421PC/TEW-423PI configuration and advanced settings, please refer to the User's Guide included on the Utility & Driver CD-ROM or TRENDnet's website at www.trendnet.com

Register Your Product

To ensure the highest level of customer service and support, please take a moment to register your product Online at: www.trendnet.com/register

Thank you for choosing TRENDnet

Q1: I inserted the Utility & Driver CD-ROM into my computer's CD-ROM Drive and the installation menu does not appear automatically. What should I do?

A1: If the window does not appear automatically, click **Start**, click **Run**, and type **D:\autorun.exe** where "D" in "D:\autorun.exe" is the letter assigned to your CD-ROM Drive, and then press the ENTER key on your keyboard.

Q2: I completed all the steps in the quick installation guide, but my card is not connecting to my access point. What should I do?

A2: First, verify that the Network Name (SSID) matches your wireless router or access point's Network Name (SSID). Second, check your TCP/IP properties to ensure that Obtain an IP address automatically is selected. Third, open the Wireless Client Utility icon, click Site Survey and then click refresh to check and see if there are any available wireless networks listed.

Q3: Windows is unable to recognize my hardware. What should I do?

A3: First, make sure your computer meets the minimum requirements as specified in Section 1 of this quick installation guide. Second, you must complete the installation of the wireless LAN Configuration Utility (as described in Section 2) before connecting the Wireless Adapter to your computer. Third, connect the Wireless Adapter to a different PCI/PC Card slot on your computer.

Q4: I cannot open the wireless configuration utility. What should I do?

A4: First, access your device manager to make sure the adapter is installed properly. If you see a networking device with a yellow question mark or exclamation point, you will need to reinstall the device and/or the drivers. To access your device manager, right-click **My Computer**, click **Properties**, under the **Hardware** tab click **Device Manager**. Second, if you are running Windows XP, you need to disable wireless zero configuration. Go to **Control Panel -> Network Connections**. Right click on the **Wireless Network Connection** icon and select **Properties**. Click on the **Wireless Networks** tab and uncheck **Use windows to configure my wireless settings**. Then click **OK**.

If you still encounter problems or have any questions regarding the TEW-421PC/TEW-423PI, please refer to the User's Guide included on the Utility & Driver CD-ROM or contact Trendnet's Technical Support Department.

Certifications

This equipment has been tested and found to comply with FCC and CE Rules.

Operation is subject to the following two conditions:

- (1) This device may not cause harmful interference.
- (2) This device must accept any interference received. Including interference that may cause undesired operation.



Waste electrical and electronic products must not be disposed of with household waste. Please recycle where facilities exist. Check with you Local Authority or Retailer for recycling advice.



NOTE: THE MANUFACTURER IS NOT RESPONSIBLE FOR ANY RADIO OR TV INTERFERENCE CAUSED BY UNAUTHORIZED MODIFICATIONS TO THIS EQUIPMENT. SUCH MODIFICATIONS COULD VOID THE USER'S AUTHORITY TO OPERATE THE EQUIPMENT.

ADVERTENCIA

En todos nuestros equipos se mencionan claramente las características del adaptador de alimentación necesario para su funcionamiento. El uso de un adaptador distinto al mencionado puede producir daños físicos y/o daños al equipo conectado. El adaptador de alimentación debe operar con voltaje y frecuencia de la energía eléctrica domiciliar existente en el país o zona de instalación.



Customer Support

Visit www.trendnet.com/support

Email:

support@trendnet.com



Europe (Germany • France • Italy • Spain • Switzerland • UK)

Toll Free Telephone: +00800 60 76 76 67

English/Espanol - 24/7

Worldwide

Telephone: +{31} (0) 20 504 05 35

English/Espanol - 24/7

Product Warranty Registration

Please take a moment to register your product online.

Go to TRENDnet's website at <http://www.trendnet.com/register>

TRENDnet[®]
20675 Manhattan Place
Torrance, CA 90501
USA