

**ECESAT32**

**Instruction Manual**

# **ExpressCard Serial ATA Adapter Card**

**2-Port SATA 6Gbps ExpressCard  
to eSATA Controller Card**

**StarTech.com**   
*Making hard-to-find easy!®*

## **FCC Compliance Statement**

This equipment has been tested and found to comply with the limits for a Class B digital device, pursuant to part 15 of the FCC Rules. These limits are designed to provide reasonable protection against harmful interference in a residential installation. This equipment generates, uses and can radiate radio frequency energy and, if not installed and used in accordance with the instructions, may cause harmful interference to radio communications. However, there is no guarantee that interference will not occur in a particular installation. If this equipment does cause harmful interference to radio or television reception, which can be determined by turning the equipment off and on, the user is encouraged to try to correct the interference by one or more of the following measures:

- Reorient or relocate the receiving antenna.
- Increase the separation between the equipment and receiver.
- Connect the equipment into an outlet on a circuit different from that to which the receiver is connected.
- Consult the dealer or an experienced radio/TV technician for help.

## **Use of Trademarks, Registered Trademarks, and other Protected Names and Symbols**

This manual may make reference to trademarks, registered trademarks, and other protected names and/or symbols of third-party companies not related in any way to StarTech.com. Where they occur these references are for illustrative purposes only and do not represent an endorsement of a product or service by StarTech.com, or an endorsement of the product(s) to which this manual applies by the third-party company in question. Regardless of any direct acknowledgement elsewhere in the body of this document, StarTech.com hereby acknowledges that all trademarks, registered trademarks, service marks, and other protected names and/or symbols contained in this manual and related documents are the property of their respective holders.

# Table of Contents

<b>Introduction</b> .....	<b>1</b>
Packaging Contents.....	1
System Requirements .....	1
<b>Installation</b> .....	<b>2</b>
Hardware Installation.....	2
Driver Installation.....	2
ECESAT32 View .....	2
Verifying Installation.....	3
<b>Specifications</b> .....	<b>4</b>
<b>Technical Support</b> .....	<b>5</b>
<b>Warranty Information</b> .....	<b>5</b>

# Introduction

The StarTech.com 2-Port eSATA ExpressCard Controller Cards offers simple connectivity between a laptop computer system and eSATA revision 3.0 devices. A cost-effective solution for connecting high RPM hard drives and Solid State Drives (SSD), which in turn allows for easier data backups and archiving. With full support for SATA revision 3.0 hard drives and data transfer speeds of up to 6 Gbps, as well as backwards support for SATA revision 2.0 devices, the adapter card features a native PCI Express single chip design that provides enhanced compatibility, reliability and performance.

## Packaging Contents

- 1 x ECESAT32 controller card
- 1 x 34mm to 54mm Stabilizer Bracket
- 1 x Driver Installation CD
- 1 x Instruction Manual

## System Requirements

- ExpressCard enabled computer system
- Microsoft® Windows® XP/Server 2003/Vista/Server 2008 R2/7 (32/64-bit), or Linux®

## ECESAT32 View



# Installation

## Hardware Installation

The ExpressCard adapter will simply slide into the ExpressCard slot on any compatible system. Push the card all the way in, until it 'clicks' and locks into place. To eject the card, simply push the card further into the slot until it clicks, and then release and it will then be automatically ejected from the slot.

**NOTE:** Some ExpressCard/54 slots do not firmly hold an ExpressCard/34 module, so the 34mm to 54mm stabilizer bracket may be necessary.

## Driver Installation

### Windows XP/Server 2003/Vista/Server 2008 R2

1. After installing the card into the computer system, boot up the computer.
2. Once logged into Windows, the Hardware/Driver installation wizard should appear. Insert the Driver Installation CD into the CD/DVD drive when prompted.
3. Windows should automatically start to search the CD for the appropriate drivers. This may take several minutes.

4. Once Windows has located the drivers and installed them, the card should be ready for use.

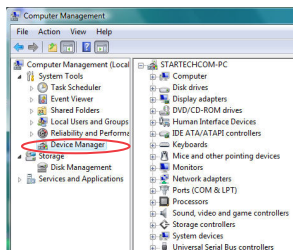
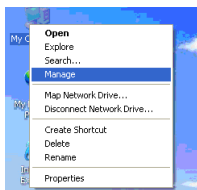
## Windows 7

No driver installation is required for Windows 7, as the controller card is natively supported, so the drivers are already installed.

## Verifying Installation

### Windows XP/Server 2003/Vista/Server 2008 R2/7

From the main desktop, right-click on “My Computer” (“Computer” in Vista or later), then select “Manage”. In the new Computer Management window, select Device Manager from the left window panel.



Under the “SCSI and RAID Controllers” category (“Storage Controllers” in Vista or later), should be a “Marvell 91xx” device. Right-click on the device and select “Properties” to make sure it is installed and working correctly.

For Windows 7, if using the native drivers, the card will instead be listed under the “IDE ATA/ATAPI Controller” category as a “Standard AHCI” device.

## Specifications

<b>Bus Interface</b>	ExpressCard 2.0 SATA revision 3.0
<b>Connectors</b>	2 x 7-pin eSATA
<b>Chipset ID</b>	Marvell 9128
<b>Maximum Data Transfer Rate</b>	SATA: 6Gbps
<b>RAID Support</b>	0, 1, JBOD (single)
<b>Operating Temperature</b>	5°C to 50°C (41°F to 122°F)
<b>Storage Temperature</b>	-25°C to 70°C (-13°F to 158°F)
<b>Humidity</b>	15~90% RH
<b>Compatible Operating Systems</b>	Windows XP/Server 2003/Vista/ Server 2008 R2/7 (32/64-bit), Linux

## Technical Support

StarTech.com's lifetime technical support is an integral part of our commitment to provide industry-leading solutions. If you ever need help with your product, visit [www.startech.com/support](http://www.startech.com/support) and access our comprehensive selection of online tools, documentation, and downloads.

## Warranty Information

This product is backed by a lifetime warranty.

In addition, StarTech.com warrants its products against defects in materials and workmanship for the periods noted, following the initial date of purchase. During this period, the products may be returned for repair, or replacement with equivalent products at our discretion. The warranty covers parts and labor costs only. StarTech.com does not warrant its products from defects or damages arising from misuse, abuse, alteration, or normal wear and tear.

### Limitation of Liability

In no event shall the liability of StarTech.com Ltd. and StarTech.com USA LLP (or their officers, directors, employees or agents) for any damages (whether direct or indirect, special, punitive, incidental, consequential, or otherwise), loss of profits, loss of business, or any pecuniary loss, arising out of or related to the use of the product exceed the actual price paid for the product. Some states do not allow the exclusion or limitation of incidental or consequential damages. If such laws apply, the limitations or exclusions contained in this statement may not apply to you.





StarTech.com has been making “hard-to-find easy” since 1985, providing high quality solutions to a diverse IT and A/V customer base that spans many channels, including government, education and industrial facilities to name just a few. We offer an unmatched selection of computer parts, cables, A/V products, KVM and Server Management solutions, serving a worldwide market through our locations in the United States, Canada, the United Kingdom and Taiwan.

Visit **[www.startech.com](http://www.startech.com)** today for complete information about all our products and to access exclusive interactive tools such as the Cable Finder, Parts Finder and the KVM Reference Guide.