

TomTom Golfer 2

User Manual

2.0



Contents

Welcome	4
<hr/>	
Getting started	5
<hr/>	
Your watch	6
<hr/>	
About your watch	6
Cleaning your watch.....	7
Using the USB dock	7
Watch status	7
Performing a reset.....	8
<hr/>	
Playing a round of golf	10
<hr/>	
Quick Start: Playing your first hole	10
Choosing a course	11
Updating golf course information	11
Pausing, stopping and continuing a round.....	12
Reporting a change for a course	12
<hr/>	
Doglegs	13
<hr/>	
Understanding doglegs on your watch	13
<hr/>	
Laying up	15
<hr/>	
Laying up using your watch	15
Layup and green views.....	16
<hr/>	
Approaching the green	17
<hr/>	
Approaching the green using your watch	17
Layup and green views.....	17
<hr/>	
Hazards	19
<hr/>	
Understanding hazards on your watch	19
Zooming in on a hazard	20
<hr/>	
Scoring	22
<hr/>	
Scoring using your watch	22
Viewing previous scores	23
<hr/>	
Autoshot detection	24
<hr/>	
About autoshot detection	24
Manually recording a stroke	24

Settings	26
About settings	26
About.....	26
Clock	26
Phone	26
Airplane mode.....	28
Options	28
Profile.....	29
Standards.....	29
TomTom MySports account	30
TomTom MySports mobile app	31
TomTom MySports Connect	33
Glossary of Terms	34
Addendum	36
Copyright notices	40

Welcome

This User Manual explains everything you need to know about your TomTom Golfer 2 watch. Your TomTom Golfer 2 can be used for normal stroke play, also known as medal play.

If you want a quick read of the essentials, we recommend that you read [Getting started](#). This covers downloading TomTom MySports Connect and using the USB desk dock.

After that, if you have a smartphone, you will probably want to download the TomTom MySports app for free from your usual app store or by going to tomtom.com/app.

For information about what you see on the watch and how to use it, here are some good starting points:

- New features
- [About your watch](#)
- [Quick Start: Playing your first hole](#)
- [Settings](#)

Tip: There are also frequently asked questions (FAQs) at tomtom.com/support. Select your product model from the list or enter a search term.

We hope you enjoy reading about and, most importantly, playing golf with your new TomTom Golfer 2!

Getting started

Before you start playing golf, it's a good idea to charge your watch, download the TomTom MySports app for your smartphone and TomTom MySports Connect for your desktop computer or laptop.

Tip: You can update golf courses and get software updates using MySports Connect.

1. Download and install the [TomTom MySports mobile app](https://www.tomtom.com/app) on your phone from [tomtom.com/app](https://www.tomtom.com/app).
2. Download the [TomTom MySports Connect](https://www.tomtom.com/123/) desktop application from [tomtom.com/123/](https://www.tomtom.com/123/). Install TomTom MySports Connect on your computer. TomTom MySports Connect is available for free.
3. Place your watch in the [USB dock](#) and connect the dock to your computer.
Follow the instructions that TomTom MySports Connect gives you.



After your watch is charged, you can [play your first hole](#).

Tip: Your watch is fully charged when the battery animation stops moving and shows a full battery.

You should connect your watch to your computer regularly to charge it, update golf course information, download software updates and download QuickGPSfix information.

Important: You can also use any USB wall charger to charge your TomTom Golfer 2. Place your watch in the USB dock and then connect the USB connector from the USB dock to your USB wall charger.

Battery life

When the battery is fully charged, your watch can be used for up to 10 hours of playing golf. The battery is used more quickly if you use the [backlight](#) on your watch frequently.

Tip: Your watch shows a low battery symbol if there is not enough charge for a complete round of golf (4 hours). A low battery symbol with a line through it means that you need to charge your watch immediately.

TomTom MySports app

You can download the TomTom MySports app for free from your usual app store or by going to [tomtom.com/app](https://www.tomtom.com/app).

To learn more, go to [TomTom MySports mobile app](#) in this guide.

Pairing your watch with your phone

To learn more, go to [Phone](#) in this guide.

Your watch

About your watch

When you use your watch, you start from the Clock screen. This screen shows the [time and date](#). The hour number is shown slightly dimmed and the minutes are shown brighter so you can see the precise time more clearly.

Use the button to move Up, Down, Left or Right to other screens on your watch.



1. Move Down - opens the [Settings](#) menu.
2. Move Right - opens the [Golf course](#) menu.
3. Move Up - opens the [Scorecard history](#) screen.
4. Cover the screen with your palm to turn on the back light.

The Clock screen shows the time and date. You can choose to show the time in 12 hour or 24 hour format by moving down to open the [Settings](#) menu, then selecting **Clock**.

Using your watch

Tip: For best performance, wear your watch on your left wrist if you play right-handed and vice versa.

Move Up or Down to select items in a menu.

Move Right to select an item and open the menu for that item.

Move Left to exit a menu.

To select an option in a menu, make sure it is highlighted when you leave the menu. Your watch remembers the option you highlighted.

If an option in a menu switches on and off, move Right to change the setting.

Cleaning your watch

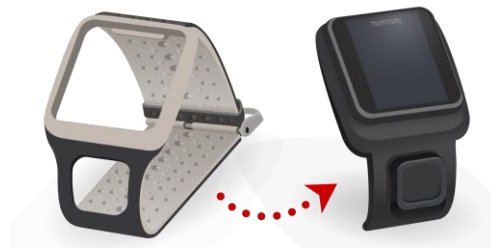
It is recommended that you clean your watch once a week if you use it frequently.

- Wipe the watch with a damp cloth as needed. Use mild soap to remove oil or dirt.
- Do not expose your watch to strong chemicals such as gasoline, cleaning solvents, acetone, alcohol, or insect repellents. Chemicals can damage the watch's seal, case, and finish.
- Straps should not be left next to a radiator or in direct sunlight.

Using the USB dock

You can use the USB desk dock when your watch is in the wrist strap or you can remove your watch from the wrist strap first.

To remove the watch from the wrist strap, hold your watch in both hands, place your thumbs on the big button and your forefingers on the back edges of the watch frame, and press your thumbs down on the big button until the watch clicks free from its frame.



To place your watch in the USB dock, slide the watch into the dock, following the curve of the back of the watch until it clicks into place.

To remove your watch from the USB dock, push underneath the screen of the watch. The watch will slide out, following the curve of the back of the watch. Do not lift the watch from the top as this can damage the USB dock.

Important: You can also use any USB wall charger to charge your TomTom Golfer 2. Place your watch in the USB dock and then connect the USB connector from the USB dock to your USB wall charger.

Watch status

From the Clock screen, move Down to open **Settings** and then select **About** to see the Watch Status screen.

The status screen shows the following information:

- **Battery** - the battery power remaining on your watch.

To charge the battery, place the watch in the desk dock and [connect the dock](#) to your computer.

- **Storage** - the remaining storage on your watch. You get a warning if you run out of space to store any more golf scores. To make more space, [sync](#) your watch with your phone regularly.
- **QuickGPS** - the status of the QuickGPSfix information on your watch.

QuickGPSfix helps your watch find your precise location quickly so that you can start your round of golf. To update the QuickGPSfix information on your watch, connect your watch to your computer or use the MySports app. TomTom MySports Connect automatically updates QuickGPSfix on your watch. QuickGPSfix information is valid for three days after you download it. These symbols are used to show the status of QuickGPSfix:



QuickGPSfix on your watch is up-to-date.



QuickGPSfix on your watch is out-of-date. If the QuickGPSfix information on your watch is out-of-date, your watch still works as usual. It may, however, take longer to get a GPS fix when you want to [play a round of golf](#).

- **Version** - the software version number and serial number of your watch. You may need this information if you contact Customer Support. Every time you connect your watch to your computer, TomTom MySports Connect checks if a software update is available for your watch.

Performing a reset

Soft reset

A soft reset is performed each time you disconnect your watch from a wall charger or computer.

To perform a soft reset on your watch, follow these steps:

1. Connect your watch to a wall charger or computer.
Wait until your watch shows a battery symbol.
If you are using a computer, wait until MySports Connect finishes updating your watch.
2. Disconnect your watch from the wall charger or computer.
The software on your watch restarts. This performs a soft reset on your watch.

Recovery mode

Before you perform a factory reset on your watch you should try updating the watch software using the recovery mode. The recovery mode allows you to reinstall the software on your watch without deleting any personal data and settings.

To perform a reset on your watch using the recovery mode, follow these steps:

1. Connect your watch to your computer and wait until MySports Connect finishes updating your watch.
2. On your watch, move Down but keep the button pressed.*
3. Disconnect the USB cable from your computer.*
4. Keep pressing the button until your watch shows a watch connected with a computer and tomtom.com/reset.
5. Release the button and connect the USB cable to your computer.
6. Click **Update** in MySports Connect.

* If the USB port on your computer is not easily accessible, connect the dock to the computer without the watch. Then move down from the clock screen while you slide the watch into the dock.

Factory reset

Important: A factory reset removes all golf courses and settings from your watch and then reinstalls the software. To reinstall golf courses after a reset, connect your watch to your computer and follow the instructions to open a MySports account. If you don't want to do a factory reset now, select Cancel and then select Update instead.

You should only use a factory reset as a last resort to restore your watch or if you really want to remove all your golf courses and settings.

A factory reset reinstalls the software on your watch and this removes the following:

- Your golf courses.
- Your score history.
- Your settings on the watch.

Important: When you perform a factory reset, do not disconnect your watch before MySports Connect has finished restoring your watch. Installing the software on your watch takes several minutes. You then need to setup your watch in MySports Connect before you can install the golf courses again. Check any messages shown in MySports Connect and on your watch before you disconnect your watch.

To perform a factory reset on your watch, follow these steps:

1. Connect your watch to your computer and wait until MySports Connect finishes updating your watch.
2. Expand **SETTINGS** in MySports Connect.
3. Click **FACTORY RESET** at the bottom of MySports Connect.
MySports Connect downloads the latest version of the software for your watch.
4. Keep your watch connected when the window for MySports Connect closes.
MySports Connect installs the software on your watch.
5. Keep your watch connected when the window for MySports Connect opens again.
6. Follow the instructions in MySports Connect to setup your watch.

Playing a round of golf

Quick Start: Playing your first hole

To play your first hole, do the following:

1. From the Clock screen, move Right.
Your watch shows **Please wait**. When a GPS fix is found, you see a list of nearby golf courses.
2. Move Up or Down to select a course, then move Right to start a round.
3. The first hole is shown and you see the following information on the range screen on your watch:
 1. A bent arrow shows whether the hole has a dogleg or not, and dogleg direction.
 2. Hole number (next to the flag symbol).
 3. Par for the hole.
 4. The distance from your last swing.
 5. Distance from your position to the back, centre and front of the green.

Note: Distance to the pin is not shown because pin placement may vary from day to day.

Tip: Move Right to see more information about the hole.



4. Take as many practice swings as you like.
5. Play your first stroke and then walk to the location of your golf ball.
Distance from the last swing is shown.
6. Play the remainder of the strokes for this hole until you hole out.

Note: If a shot isn't automatically detected, cover the screen with your palm to manually add a chip or putt.

7. Edit the score when you see the scorecard alert or move Right twice to edit the score as you play.
8. Walk to the second hole. Your watch automatically detects when you move to the next hole or you can move Up or Down from the range screen to manually move to the second hole.

Choosing a course

Tip: When your watch shows **Please wait** while waiting for a QuickGPSFix, you can move Down to browse recent courses. The watch vibrates when a fix is found.

Move Up or Down to in the golf course menu to choose a golf course.



Move Right when you are ready to start playing.

Move Left to go back to the Clock screen.

Note: To find out if your golf course is available on the watch, go to tomtom.com/en-gb/golf/golf.html. The page is available in English.

Updating golf course information

One-off update to start receiving incremental course updates

To allow your watch to receive incremental updates, we recommend that you reinstall all courses globally.

Before you update the golf course information, make sure that you are using the latest version of the MySports Connect desktop application used to update your watch. If you don't have the latest version installed, an update link is shown next to the version:

- **Windows:** Click the watch icon in the notification area at the bottom right of your desktop and click Settings. The version is listed on the About tab.
- **Mac:** Click the watch icon in the status bar at the top right of your desktop and click Settings. The version is listed on the About tab.

To update the golf course information on your TomTom Golfer 2, follow these steps:

1. Connect your watch to your computer.
MySports Connect downloads and installs the latest changes to your recently played golf courses.

2. In MySports Connect, click **Update**.
MySports Connect downloads and installs the latest software version.
3. Expand **SETTINGS** in MySports Connect.
4. Select the **GOLF COURSES** tab in MySports Connect and click **GET NEW MAPS**.
MySports Connect downloads and installs all courses globally.

Updating course information thereafter

You can update the golf courses on your TomTom Golfer 2 in two ways:

1. [TomTom MySports mobile app](#)
If you have a compatible phone, you can use the TomTom MySports mobile app to update all recently played golf courses and those within a range of 1000 metres.
2. [TomTom MySports Connect](#)
Each time you connect your watch to your computer, MySports Connect downloads and installs the latest changes to your recently played golf courses.
If you need to update all golf courses globally, for example when you plan to travel, expand **SETTINGS** in MySports Connect. Select the **GOLF COURSES** tab and click **GET NEW MAPS**.

Note: Reinstalling all courses can take approximately an hour.

Pausing, stopping and continuing a round

Pausing and restarting a round of golf

During a round of golf, move Left to stop the clock and pause your round.

To resume your round again, move Right.

Stopping a round of golf

To stop the round, move Left to pause and then move Left again to return to the Clock screen.

Continuing a round of golf

Tip: You can only continue a round of golf if you have previously entered at least one number on your scorecard.

To continue a round of golf, do the following:

1. From the Clock screen, move Right and choose the course you were playing previously.
2. Move Right to go to the Range screen.
You are asked if you wish to resume your scorecard.
3. Move Right to choose 'yes' or move Left to select 'no'.

Note: You can resume a scorecard for up to 24 hours after pausing a round and returning to the Clock screen. The scorecard is still saved in your Score history if you select 'no'.

Reporting a change for a course

You can report changes to golf courses here:

[Reporting changes to a golf course](#)

Doglegs

Understanding doglegs on your watch

Your TomTom Golfer 2 can show whether any doglegs are present on a hole.

On your watch, a dogleg is shown as an arrow icon on the range screen. The direction the arrow points shows you whether the dogleg bends to left or to the right.



You may choose to hit over a dogleg or to lay up instead.

Note: Double doglegs are not supported by your TomTom Golfer 2.

Position of doglegs on the fairway

Your TomTom Golfer 2 shows the position of doglegs relative to their position on the actual course.

For example, the watch below is showing a dogleg right at 230 yards/metres from your current position.



The distance to the start of the dogleg is measured along the course centre line.

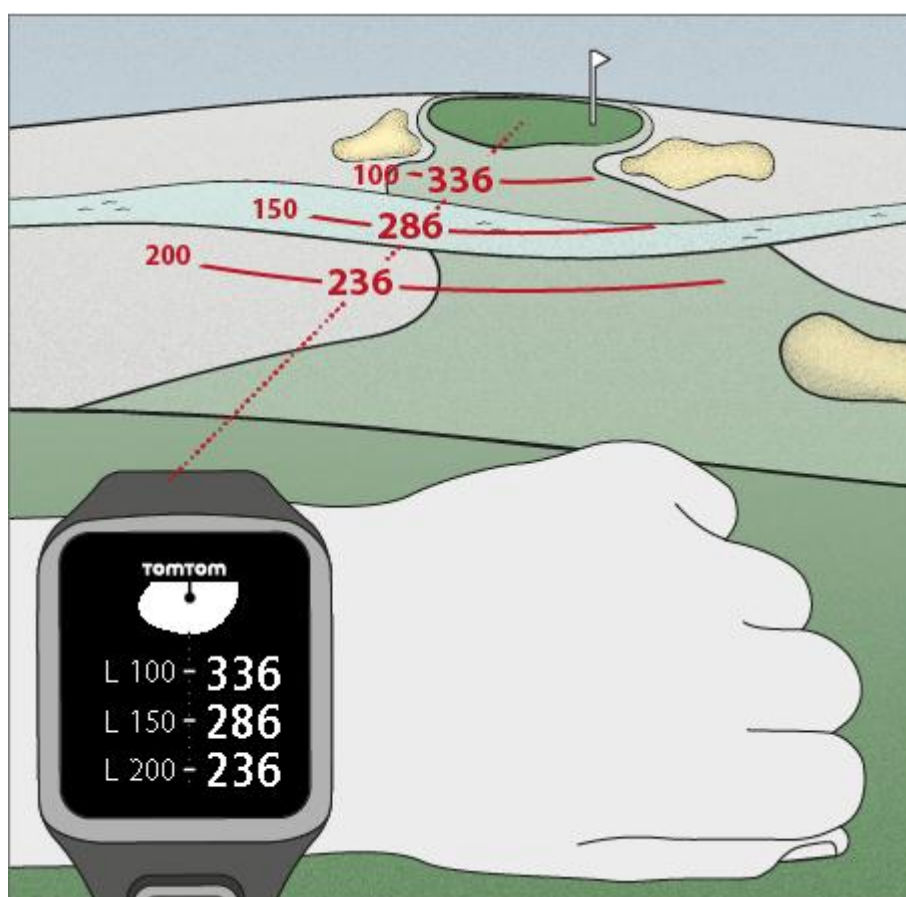
Laying up

Laying up using your watch

The layup screen during play (see below) shows the layup markers on the left-hand side of the watch screen and your current distance from that marker on the right-hand side of the watch screen.

So as you look towards the pin, you can see how far away you currently are from the 200, 150 and 100 yard/metre markers.

For example, in the image below, the golfer is 236 yards/metres from the 200 yard/metre layup marker.



As you walk the hole towards the pin, your current distance from the first L200 marker on the right-hand side of the watch screen reduces.

When you reach a layup marker, the layup marker disappears from the screen.

The default distances for the layup markers are 100, 150, 200.

Note: Keep moving Up to cycle through the Hazards, Layup or Green view screen, depending on which are applicable for the current hole. Green view is always present.

Tip: If a poor or loss of signal occurs, the range values grey and display the last values that were deemed to be good or accurate.

See also: [Layup and green views](#)

Layup and green views

As you approach the green, move Up or Down to swap between the layup screen and the green view as shown below.



Once you have passed the last layup marker, the watch automatically shows only the view of the green.

See also: [Approaching the green using your watch](#)

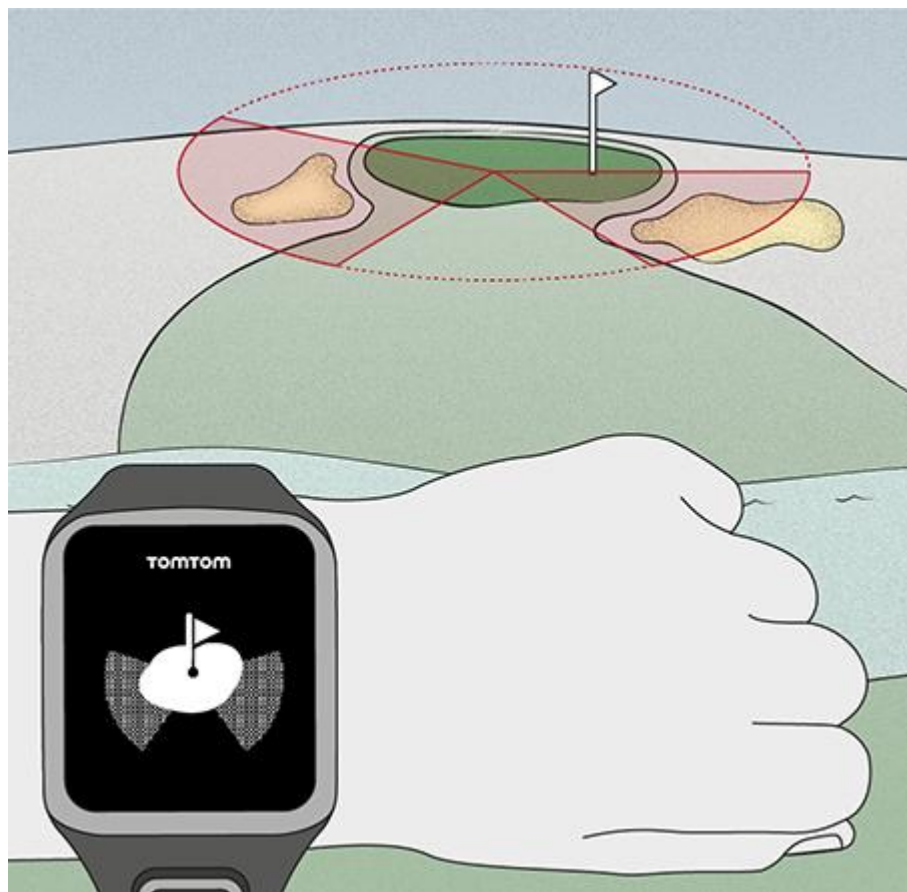
Approaching the green

Approaching the green using your watch

As seen from the example below, the shape of the green on your watch mirrors the shape of the actual green that you are approaching.

Any surrounding hazards are shown as patterns. Water is shown using a wave pattern and bunkers as a dotted pattern. If a water and sand hazard are in the same area surrounding the green, water takes priority and that pattern is shown over the sand pattern.

The distance to the centre of the green is shown and reflects the middle value on the range screen.



See also: [Layup and green views](#)

Layup and green views

As you approach the green, move Up or Down to swap between the layup screen and the green view as shown below.



Once you have passed the last layup marker, the watch automatically shows only the view of the green.

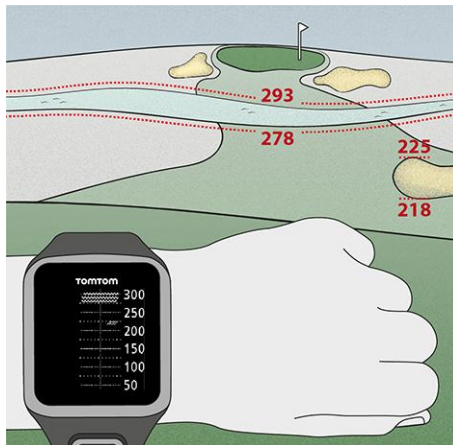
See also: [Approaching the green using your watch](#)

Hazards

Understanding hazards on your watch

Your TomTom Golfer 2 can show you nearby water hazards or bunkers that are within 300 metres (328 yards).

On your watch, hazards are shown as a water or sand pattern, alongside distance measurements to the hole, such as 293 (back) and 278 (front) as shown below.



Position of hazards on the fairway

Your TomTom Golfer 2 shows the position of hazards relative to their position on the actual course.

For example, the watch below is showing a [bunker](#) approximately 220 yards/metres on the right and a [water hazard](#) 275 yards/metres straight ahead that you will need to hit the ball over - it is approximately 15 yards/metres wide.



If there are no hazards on a hole or you have passed them already, you see a tick in the middle of the Hazards screen.

Note: When there is no information available about hazards on a hole, you see a message saying **No info.**

Zooming in on a hazard

Your TomTom Golfer 2 shows the position of hazards relative to their position on the actual course.



To see more detail about the hazards currently in front of you, do the following:

1. Go to the Hazards screen.
2. Cover the screen of your TomTom Golfer 2 with your palm as if you are turning on the [back light](#).

You see a zoomed-in view of the hazards currently in the middle of the screen showing accurate distances and more detail.



3. To zoom out, cover the screen again with your palm.

Tip: You don't see doglegs in the zoomed-in Hazards screen.

Scoring

Scoring using your watch

After playing a hole, move Right until you see the scorecard screen. The scorecard is used for recording your score for each hole, and it also shows you your total score so far for the round.

Tip: To switch on prompting for your score before you move to the next hole, move Down to open the **Settings** menu from the Clock screen, then select **Options** and move Right, select **Hole**. Select **ON+SCORE**.



1. Your score relative to par for the round.
"E" means even par for the hole. A plus sign (+) means over par, and a minus sign (-) below par.
2. The identifying number of the hole, for example, here the golfer is on the first hole.
3. The par for the hole. For example, the first hole shown above is a par 5.
4. The total number of strokes taken so far for a round. In this example, the golfer has played one hole and taken 5 strokes so the total for the round so far is also 5 strokes.
5. The number of strokes for the hole just played.
Enter the score for a hole by moving Up and Down until the number of strokes that you played for that hole are shown.

Note: If you hit a ball [out of bounds](#) or onto an adjoining hole by mistake, just record the extra strokes on your watch as part of the total for that hole after you finished playing it. To record an extra stroke, cover the screen with your palm when you are in the Range or Scorecard screens.

See also: [Viewing previous scores](#)

Viewing previous scores

1. Move Up from the Clock screen to see scores from your previous rounds.



You see the dates of your recent rounds along with the overall score for the round, for example as shown above, 3 under, 2 under or even par.

2. Move Up and Down to choose a previous round to look at in more detail, then move Right. You see the name of the course you played.
3. Move Right to see the par and total score for the round, split into the front 9 holes and back 9 holes, as shown below.



4. Move Right to see the score for each hole of that previous round.
5. Move Left to go back to the name of the course.

Tip: Up to 250 completed scorecards can be stored on the watch, and this information includes the overall score and per hole score for each round.

Autoshot detection

About autoshot detection

Your watch automatically records when you make a swing or shot and tells you by vibrating and showing an alert.



The watch vibrates because if you hold a 4-5 second follow-through after playing your stroke, you may miss seeing the alert.

Note: You can make several practice swings without affecting your scorecard because only one stroke is added to the scorecard from each location. If you need to add more strokes, for example due to a penalty shot, you can record a stroke manually by covering the screen with your palm.

Important: All putts need to be recorded manually. See: [Manually recording a stroke](#).

Manually recording a stroke

Occasionally [autoshot detection](#) may not record a stroke and in these situations, you can manually record a stroke instead. Also all putts need to be recorded manually.

To manually record a stroke, cover the screen of your watch with your palm.

When you manually record a stroke on the green, it is recorded as a putt.



Note: You can make several practice swings without affecting your scorecard.

See: [About autoshot detection](#).

Settings

About settings

From the Clock screen, move Down to open the **Settings** menu. These settings determine the overall behaviour of your watch.

The following settings are available for your watch:

- [About](#)
- [Clock](#)
- [Phone](#)
- [Airplane mode](#)
- [Options](#)
- [Profile](#)
- [Standards](#)

About

From the Clock screen, move down to open the **Settings** menu, then select **About** and move Right to open the **Watch Status** screen.

See [Watch status](#) for a description of the information on this screen.

Clock

From the Clock screen, move down to open the **Settings** menu, then select **Clock** and move Right to open the **Clock** menu.

Alarm

Select **Alarm** to turn the alarm on and off and to set the alarm time.

When the alarm goes off, move Left to stop it or move Right to snooze. If you snooze the alarm, it goes off again in 9 minutes.

Time

Select **Time** to set the time on your watch. The time is either set using the 12 or 24 hour clock, depending on the setting for **24HR**.

Date

Select **Date** to set the date on your watch.

24HR

Select **24HR** to switch between using the 12 hour clock and the 24 hour clock to display and set the time. Move Right to switch between **ON** and **OFF** for this setting.

Phone

The TomTom MySports mobile app allows you to automatically upload your sports activity data from your TomTom Golfer 2 to TomTom MySports using your smartphone. In addition, the app downloads QuickGPSfix data to your watch.

For more information as to why you should want to pair your watch with your phone or mobile device, see TomTom MySports app.

To pair your watch with a phone or mobile device, do the following:

1. Make sure that your phone or mobile device is close by.
2. On your phone, make sure that Bluetooth is enabled.
3. From the clock screen on your watch, move down to open the **Settings** screen, then select **Phone** and move right.
4. Move right to start pairing.
5. On your phone, start the MySports Connect app and tap to connect.



6. When the name of your watch appears, tap on it.
7. On your phone, enter the pin number shown on the watch, then tap **Pair**.
Your watch is now paired with your phone or mobile device.
When pairing has been completed, you see a "Connected" message on your watch.



As long as you have the mobile app active or running in the background on your phone or mobile device, the watch automatically tries to connect when it has a new activity to upload or when the QuickGPSfix data is out-of-date.

If you open the MySports app on your phone and it is trying to connect to your watch, you may need to wake up your watch by moving away from the clock screen. Move down, left or right from the clock screen.

Synchronising course information

You can automatically synchronise golf course information with your TomTom MySports account by using this setting.

From the clock screen on your watch, move down to open the **Settings** screen, then select **Phone** and move right.

Select **Sync**. If automatic uploading is currently switched **OFF**, move up or down to switch automatic uploading on.

Airplane mode

From the Clock screen on your watch, move Down to open the **Settings** screen, select **Airplane mode** and then move Right.



Move Up or Down to switch on airplane or flight mode.

When airplane mode or flight mode is switched on, an airplane icon is shown on the clock screen and all Bluetooth low energy (also known as BLE or Bluetooth® Smart) connectivity is disabled.

To switch airplane mode off, move Up or Down again.

Options

From the Clock screen, move Down to open the **Settings** menu, then select **Options** and move Right to open the **Options** menu.

Hole

Select **Hole** to set whether or not your watch automatically advances to the next hole and also whether you want it to prompt you to enter your score. You can choose from the following options:

- **ON** - Your watch automatically advances to the next hole after you complete the hole you are currently playing.
- **OFF** - Automatic hole advance is switched off.
- **ON+SCORE** - Automatic hole advance is on and your watch also asks you to enter your score before you move to the next hole on the course.

Units

Select **Units** to set the distance and weight units used on your watch. You can select any combination of yards or metres, and pounds or kilogrammes.

Click

Select **Click** to set what your watch does as you move through menus. Your watch can do the following:

- Make a clicking sound.
- Vibrate/buzz for short time.

You can turn both on or off, or turn only one on.

Profile

From the Clock screen on your watch, move down to open the **Settings** menu, then select **Profile** and move right to open the **Profile** menu.

Select the following options to set your details in each case:

- **Language**
- **Weight**
- **Height**
- **Age**
- **Gender**

Gender is used by the TomTom Golfer 2 when playing a hole that may have different par values for men and women. For example, a hole could be a par 5 for women and a par 4 for men.

Language

Select **Language** to set the language used for menus and messages on your watch.

Standards

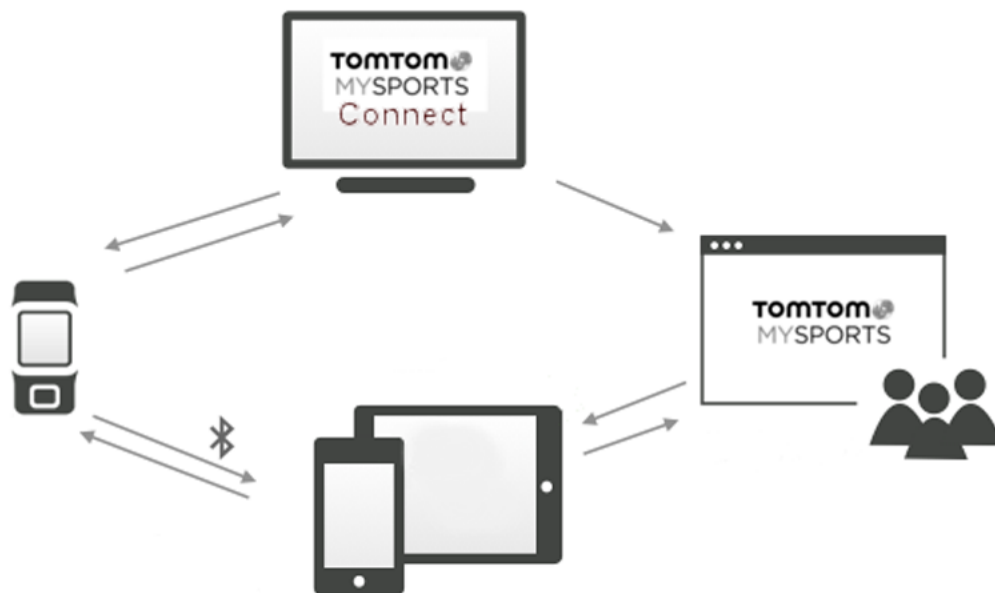
From the Clock screen, move Down to open the **Settings** menu, then select **Standards** and move Right to scroll through all the country-specific product certifications.

TomTom MySports account

Your TomTom MySports account is a central storage location for all your sports information.

To create an account, click the button in TomTom MySports Connect, or go directly to the website:
mysports.tomtom.com

As you can see from the diagram below, you can manage to your MySports account using either TomTom MySports Connect or the TomTom MySports app.

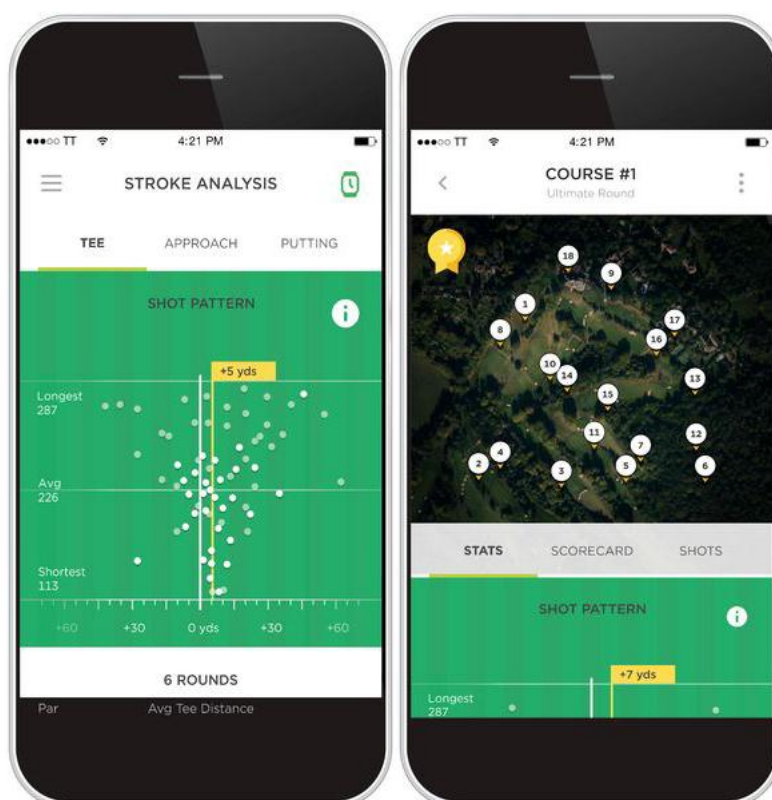


TomTom MySports mobile app

You can download the TomTom MySports app for free from your usual app store or by going to tomtom.com/app.

The TomTom MySports mobile app does the following:

- Shows you stroke analysis, your ultimate round and your shot distribution or pattern.
- Updates golf course information.
- Updates the QuickGPSfix information on your watch.
- Provides an alternative to TomTom MySports Connect for updating QuickGPSfix.



Supported phones and mobile devices

iOS

The TomTom MySports app is compatible with iOS 7.1 and higher on the following Bluetooth Smart enabled devices:

- iPhone 5 or later.
- iPod touch 5th generation or later.
- iPad Pro, iPad Air.
- iPad 3rd generation or later.
- All iPad mini.

Android

The TomTom MySports app requires Bluetooth Smart (or Bluetooth LE) and Android 4.3 or higher to communicate with your watch. A range of Bluetooth Smart enabled Android devices have been tested to confirm their compatibility with the MySports app. Check your phone's compatibility with the MySports app by visiting the [Google Play Store](#).

TomTom MySports Connect

TomTom MySports Connect does the following:

- Helps you set up your watch.
- Updates the software on your watch when new versions become available.
- Updates golf course information on your watch.
- Transfers any settings you make on TomTom MySports to your watch.
- Updates the QuickGPSfix information on your watch.

Installing TomTom MySports Connect

You can download TomTom MySports Connect for free from here: tomtom.com/123/

Once installed, connect your watch to your computer using the [USB dock](#).

Glossary of Terms

A

Autoshot detection

Your watch automatically records one swing or shot at each location and tells you by vibrating and showing an alert. If you make practice swings within 15 metres of a location, your watch doesn't add extra strokes and hence doesn't vibrate.

B

Bunker

A bunker is a steep-sided hole or shallow pit near the green or fairway that is usually filled with sand. It can be more difficult to play a ball from sand than from grass and bunkers sometimes have a raised lip which makes it difficult to hit the ball out of the bunker.

D

Dogleg

Some holes are deliberately designed with no direct line-of-sight from the tee to the green. A hole may bend either to the left or to the right and this bend is called a "dogleg", in reference to the similarity to a dog's ankle.

G

Green

A green, or putting green, is an area of closely trimmed grass surrounding the hole or pin. Holing out or getting the ball into the hole with the minimum number of strokes possible is the main aim of playing golf.

H

Hazard

A hazard is an area of a golf course which provides a difficult obstacle for the golfer to negotiate. A course may include water hazards such as lakes and rivers, man-made hazards such as bunkers, and natural hazards such as trees or thick vegetation.

Many recreational golfers use the term "hazard" to mean anything on a golf course that is hazardous to one's score such as thick rough or a tall tree in the middle of a fairway.

L

Laying up

A layup shot is made from the fairway after the drive, but due to the presence of a hazard, you have to deliberately make the shot shorter than usual or more accurate. This called laying up.

Most often, you lay up to avoid hitting the ball into a hazard on the fairway, or to put the ball in a more favourable position on the fairway for the next shot.

Layup marker

A layup marker shows you how far away you currently are from the hole. For example, if you see L100, 223, it means that you are 223 yards/metres away from the 100 yard/metre marker.

The L100 marker is 100 yards/metres from the pin.

When you reach a layup marker, the layup marker disappears from the screen.

M

Medal play

Your TomTom Golfer 2 can be used for normal stroke play, also known as medal play. This involves counting the total number of strokes taken on each hole during a round, or series of rounds. The winner is the player who has taken the fewest number of strokes over the course of the round, or rounds.

O

Out of bounds

"Out of bounds" means that all of your ball is laying beyond the boundaries of the golf course or any part of the course. The boundary of the golf course is marked by the committee in charge of the competition or the golf course.

Usually, if your ball is out of bounds, you must play the ball, under penalty of one stroke, as nearly as possible at the spot from which the original ball was last played. However you should refer to the rules for your particular course.

P

Par

The par value for a golf course is the pre-determined number of strokes that a scratch or zero handicap golfer needs to play a hole, a round (the sum of the pars of the played holes), or a tournament (the sum of the pars of each round).

A golfer's score is compared with the par score. If a course has a par of 72 and a golfer takes 76 strokes to complete the course, the reported score is +4, or four over par, taking four shots more than par to complete the course. If a golfer takes 69 strokes, their reported score is -3, or three under par.

S

Stroke play

Your TomTom Golfer 2 can be used for normal stroke play, also known as medal play. This involves counting the total number of strokes taken on each hole during a round, or series of rounds. The winner is the player who has taken the fewest number of strokes over the course of the round, or rounds.

W

Water hazard

Water hazards are usually natural obstacles that add difficulty to a golf course, though on brand new courses they can of course be man-made. A water hazard may typically be a stream or pond, positioned next to the fairway or across a fairway, forcing the player to hit the ball over the water hazard.

Addendum

Warning

Always consult a physician before starting a new exercise program. The use of this product while golfing might distract you from your surroundings.

How TomTom uses your information

Information regarding the use of personal information can be found at tomtom.com/privacy.

Battery and Environmental information

This product uses a lithium polymer battery that is not user accessible or user replaceable. Do not open the case or (attempt to) remove the battery. Substances in the product and/or battery may be harmful to the environment or your health if disposed of improperly. The battery contained in the product must be recycled or disposed of properly according to the local laws and regulations and always kept separate from household waste.



WEEE directive

The wheeled bin symbol on the product or its packaging indicates that this product shall not be treated as household waste. In line with EU Directive 2012/19/EU for waste electrical and electronic equipment (WEEE), this electrical product must not be disposed of as unsorted municipal waste. Please dispose of this product by returning it to the point of sale or to your local municipal collection point for recycling. By doing this you will help conserve the environment.



Battery operating temperatures

Operating temperatures: -20°C (-4°F) to 60°C (140°F). Do not expose to temperatures beyond this.

R&TTE directive

Hereby, TomTom declares that TomTom products and accessories are in compliance with the essential requirements and other relevant provisions of the EU Directive 1999/5/EC. The declaration of conformity can be found here: tomtom.com/legal.



Triman logo



FCC information for the user



THE DEVICE COMPLIES WITH PART 15 OF THE FCC RULES

Federal Communications Commission (FCC) Statement

This equipment radiates radio frequency energy and if not used properly - that is, in strict accordance with the instructions in this manual - may cause interference to radio communications and television reception.

Operation is subject to the following two conditions: (1) this device may not cause harmful interference and (2) this device must accept any interference, including interference that may cause undesired operation of the device.

This device has been tested and found to comply with the limits for a Class B digital device, pursuant to part 15 of the FCC rules. These limits are designed to provide reasonable protection against harmful interference in a residential installation. This equipment generates, uses and can radiate radio frequency energy and, if not installed and used in accordance with the instructions, may cause harmful interference to radio communications. However, there is no guarantee that interference will not occur in a particular installation. If this equipment does cause harmful interference to radio or television reception, which can be determined by turning the equipment off and on, the user is encouraged to try to correct the interference by one or more of the following measures:

- Reorient or relocate the receiving antenna.
- Increase the separation between the equipment and receiver.
- Connect the equipment into an outlet on a circuit different from that to which the receiver is connected.
- Consult the dealer or an experienced radio/TV technician for help.

Changes or modifications not expressly approved by the party responsible for compliance could void the user's authority to operate the equipment.

FCC ID: S4L4REM

IC ID: 5767A-4REM

FCC RF Radiation Exposure Statement

The transmitters within this device must not be co-located or operating in conjunction with any other antenna or transmitter.

Responsible party in North America

TomTom, Inc., 2400 District Avenue, Suite 410, Burlington, MA 01803

Tel: 866 486-6866 option 1 (1-866-4-TomTom)

Emissions information for Canada

Operation is subject to the following two conditions:

- This device may not cause interference.
- This device must accept any interference, including interference that may cause undesired operation of the device.

Operation is subject to the condition that this device does not cause harmful interference.

This Class B digital apparatus complies with Canadian ICES-003. CAN ICES-3(B)/NMB-3(B)

The Country Code Selection feature is disabled for products marketed in the US or Canada.

Equipment is certified to the requirements of RSS-210 for 2.4-GHz.

IMPORTANT NOTE

IC Radiation Exposure Statement:

- This equipment complies with IC RSS-102 radiation exposure limits set forth for an uncontrolled environment.
- This device and its antenna(s) must not be co-located or operating in conjunction with any other antenna or transmitter.

This equipment complies with IC radiation exposure limits set forth for an uncontrolled environment. End users must follow the specific operating instructions for satisfying RF exposure compliance. To maintain with IC RF exposure compliance requirements please follow operation instruction as documented in this manual.

Regulatory Compliance Mark



This product displays the Regulatory Compliance Mark (RCM) to show that it complies with relevant Australian regulations.

Notice for New Zealand

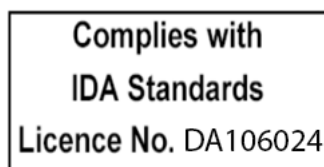
This product displays R-NZ and supplier code Z-1230 to show it complies with relevant New Zealand regulations.

Customer support contact (Australia and New Zealand)

Australia: 1300 135 604

New Zealand: 0800 450 973

IDA Standard (Singapore)

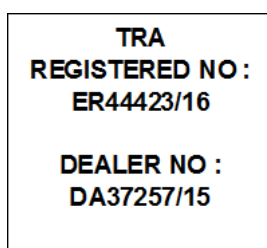


Notice for South Africa

This product displays the ICASA logo to show it complies with all relevant South African radio equipment certifications.



Notice for United Arab Emirates



Certification information for the user

To see certification information on your watch, move down from the clock screen to open the Settings menu. Select Standards and then move right to scroll through the certification information.

Model names

4REM

This document

Great care was taken in preparing this document. Constant product development may mean that some information is not entirely up to date. The information in this document is subject to change without notice.

TomTom shall not be liable for technical or editorial errors or omissions contained herein, nor for incidental or consequential damages resulting from the performance or use of this document. This document contains information protected by copyright. No part of this document may be photocopied or reproduced in any form without prior written consent from TomTom N.V.

Copyright notices

© 2016 TomTom. All rights reserved. TomTom and the "two hands" logo are trademarks or registered trademarks of TomTom N.V. or one of its subsidiaries. Please see tomtom.com/legal for limited warranty and end user licence agreements applying to this product.

© 1992 - 2016 TomTom. All rights reserved. This material is proprietary and the subject of copyright protection and/or database rights protection and/or other intellectual property rights owned by TomTom or its suppliers. The use of this material is subject to the terms of a licence agreement. Any unauthorised copying or disclosure of this material will lead to criminal and civil liabilities.

Linotype, Frutiger and Univers are trademarks of Linotype GmbH registered in the U.S. Patent and Trademark Office and may be registered in certain other jurisdictions.

MHei is a trademark of The Monotype Corporation and may be registered in certain jurisdictions.

The software included in this product contains AES code under Copyright (c) 1998-2008, Brian Gladman, Worcester, UK. All rights reserved.

Licence terms:

The redistribution and use of this software (with or without changes) is allowed without the payment of fees or royalties provided that the following conditions are adhered to:

Source code distributions include the above copyright notice, this list of conditions and the following disclaimer.

Binary distributions include the above copyright notice, this list of conditions and the following disclaimer in their documentation.

The name of the copyright holder is not used to endorse products built using this software without specific written permission.