



Jaco Trac Steering Control System for use with Jaco 500 Series

Part Number: 51-3682

Quote Description: TRAC, TENTE 5" SINGLE WHEEL

Product Group: HC-Options - Miscellaneous

Minimum Order Qty: 1

Weight: 5.30 LB

Length: 10.25"

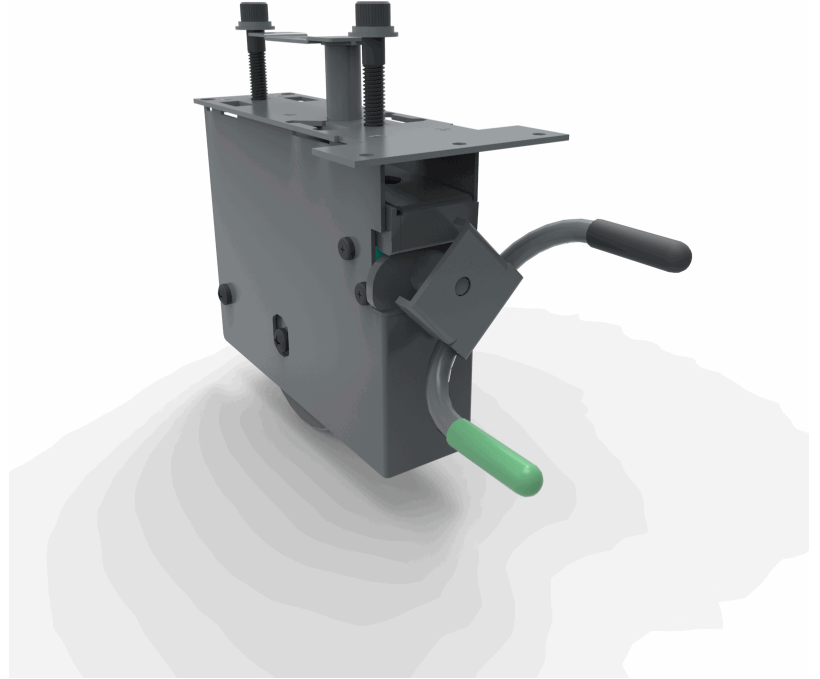
Width: 4.00"

Height: 6.25"

Warranty: 7 Year Structural; 3 Year OEM

Product Description:

TRAC™ Steering System - Centered 5th Wheel Caster for Improved Handling With a simple to use foot pedal actuator, TRAC Steering System delivers the required force to help nurses move carts effortlessly through their clinical workflow process. JACO's TRAC Steering System operates similar to the technology incorporated on a hospital bed equipped with handling controls.



Key Selling Points:

- Improved Care • Less Fatigued Nurses Provide More Consistent and Dependable Care • Agile Steering Allows for True Bedside Patient Care • Responsive Handling Makes for Faster, More Productive Clinical Rounds
- User Ergonomics • Improved Ergonomic Steering Protects the Health and Safety of Nurses • Less Strain Reduces the Likelihood of On-the-Job Injuries • Simple Foot Actuated Pedal Delivers Immediate Ergonomic Response
- Cost Savings • Easily Maneuverable Mobile Carts Sustain Less Costly Damage and Last Longer
- Commitment to Clinical Technology Advancements Improves Nurse Retention • Workplace Safety Prevents Workman's Compensation Claims

Product Features:

Moving a heavy mobile cart without TRAC Steering increases a nurse's physical strain and puts stress on their joints, knees and backs which can lead to debilitating and potentially career ending injuries. For world-classes health systems, TRAC Steering is a must have for its ability to safeguard their most valued asset, their team of healthcare professionals.

Product Compatibility:

100: No	200: No	310: No	510: Yes	J1-10: No	WS-14: No
105: No	210: No	320: No	510-L250: Yes	J1-10-L250: No	WS-25: No
160: No	220: No		510-L500: Yes	J1-10-L500: No	
	225: No				
			520: Yes	J1-20: No	WA-40: No
			520-L250: Yes	J1-20-L250: No	WA-60: No
			520-L500: Yes	J1-20-L500: No	WA-80: No

Additional Compatibility Notes:

Original Trac Wheel Assembly, phased out early 2014, replaced with 51-4029.





Jaco Incorporated

140 Constitution Blvd

Franklin, MA 02038

1-800-649-2278

www.jacoinc.com

