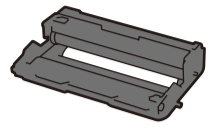
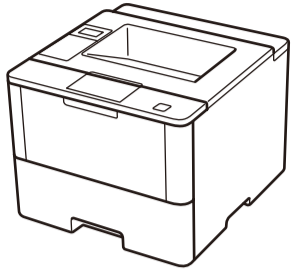
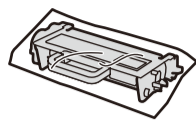




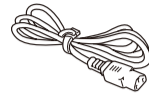
Unpack the machine and check the components



Drum Unit (pre-installed)



Starter Toner Cartridge



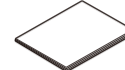
AC Power Cord



Quick Setup Guide



Product Safety Guide



Reference Guide



Installation CD-ROM

**NOTE:**

- Manuals in Spanish for this model are available on the Brother Solutions Center. (USA only): [solutions.brother.com/manuals](http://solutions.brother.com/manuals)
- Los manuales en español de este modelo están disponibles en el Brother Solutions Center. (Solamente en los Estados Unidos): [solutions.brother.com/manuals](http://solutions.brother.com/manuals)
- You must purchase the correct interface cable for the interface you want to use.

**USB cable**

We recommend using a USB 2.0 cable (Type A/B) that is no more than 6 feet (2 meters) long.

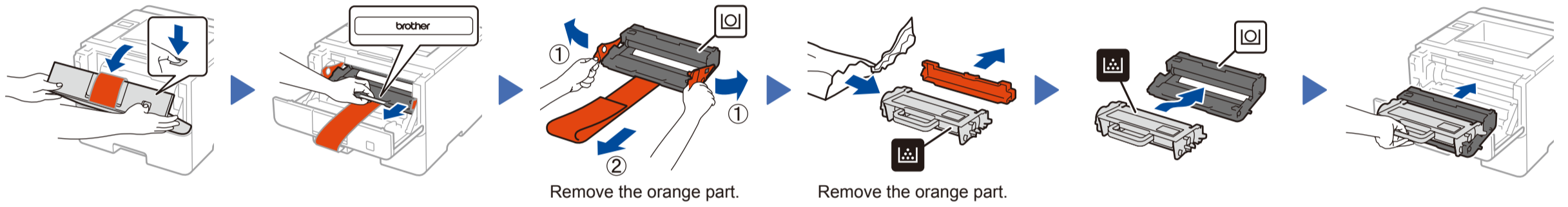
**Network cable**

Use a straight-through Category 5 (or greater) twisted-pair cable.

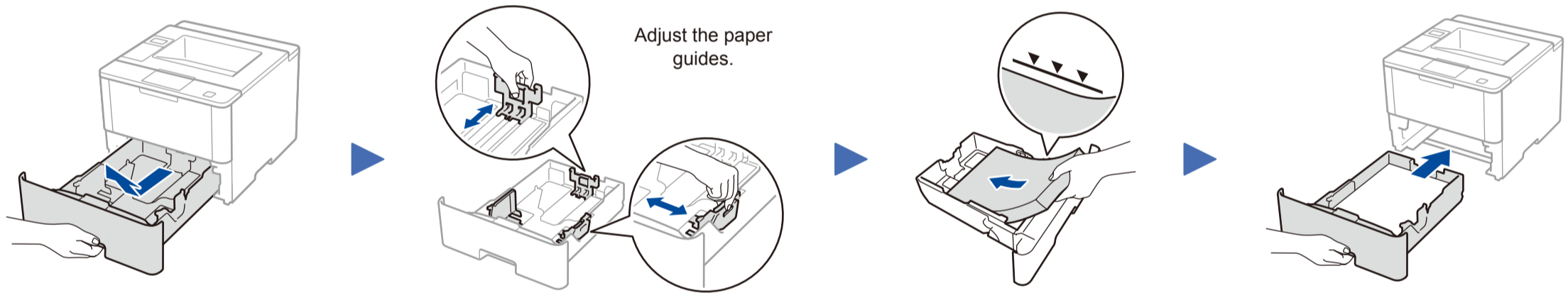


Watch our Video FAQs for help with setting up your Brother machine: [solutions.brother.com/videos](http://solutions.brother.com/videos).

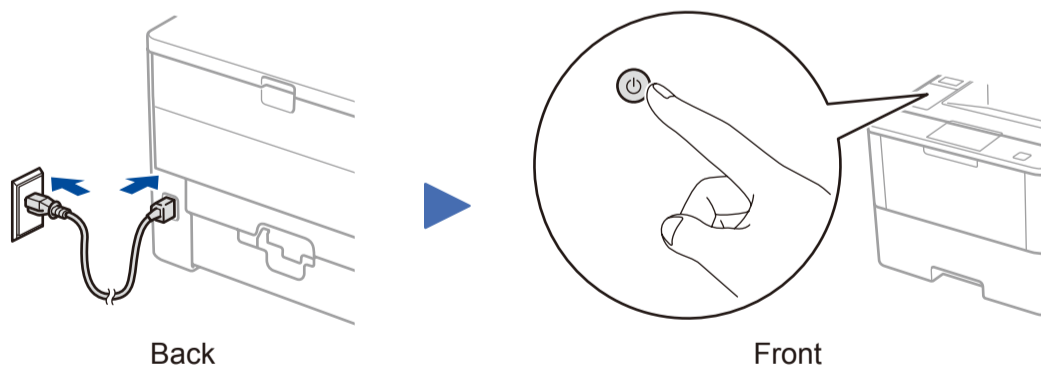
**1** Remove the packing materials and install the drum unit and toner cartridge assembly



**2** Load paper in the paper tray



**3** Connect the power cord and turn on the machine



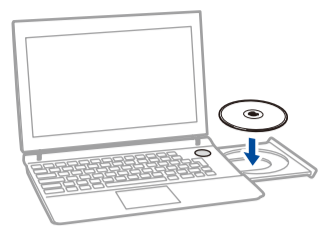
**4** Select your language (if needed)

1. Press ▼ or ▲ to select [General Setup], and then press OK.
2. Press OK to select [Local Language].
3. Press ▼ or ▲ to select your language, and then press OK.
4. Press Cancel.



## 5 Connect your machine and install software

### Windows® computer with CD-ROM drive



#### NOTE:

If the Brother screen does not appear automatically, click **Start** > **Computer (My Computer)**. (For Windows® 8: click the **File Explorer** icon on the taskbar, and then go to **Computer (This PC)**.) Double-click the CD-ROM icon, and then double-click **start.exe**.

### Macintosh/Windows® computer without CD-ROM drive



Download the full driver and software package from the Brother Solutions Center.  
(Macintosh) [solutions.brother.com/mac](http://solutions.brother.com/mac)  
(Windows®) [solutions.brother.com/windows](http://solutions.brother.com/windows)

Choose your Connection Type:

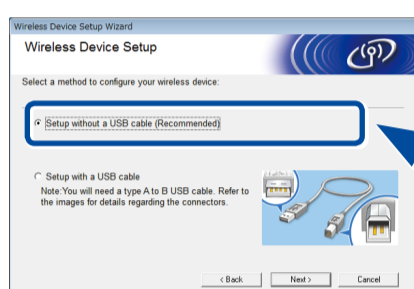


Follow the on-screen instructions to continue installation.

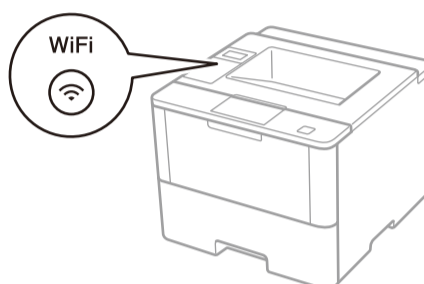
Follow the on-screen instructions to continue installation.

Finish

If using a wireless network connection:  
When the **Wireless Device Setup** screen appears, select **Setup without a USB cable (Recommended)**.



When instructed, go to your machine. Press the **WiFi** button.



Follow the on-screen instructions to continue installation.

Finish

#### NOTE:

- When finished, restart your computer.
- If connection is unsuccessful, see **Cannot set up your machine?** below.

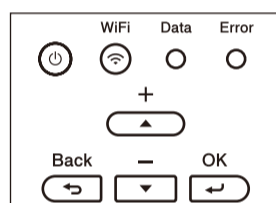
## WiFi Alternate wireless configuration method (Setup Wizard)

Restart your wireless access point/router.

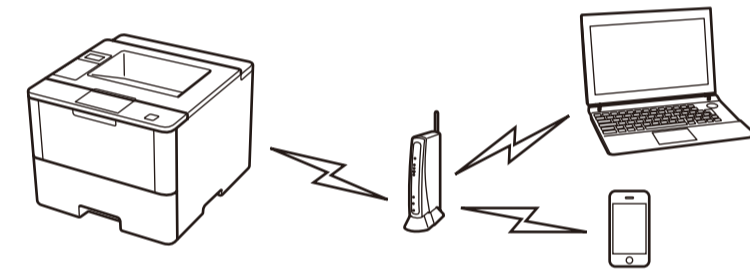


Find your SSID: XXXXXXXX  
Network key: XXXX

If you cannot find this information, ask your network administrator or wireless access point/router manufacturer.



- Press **▲** or **▼** to select the [Network] option, and then press **OK**.
- Press **▲** or **▼** to select the [WLAN] option, and then press **OK**.
- Press **▲** or **▼** to select the [Setup Wizard] option, and then press **OK**.
- When [WLAN Enable?] appears, press **▲** to select [On].



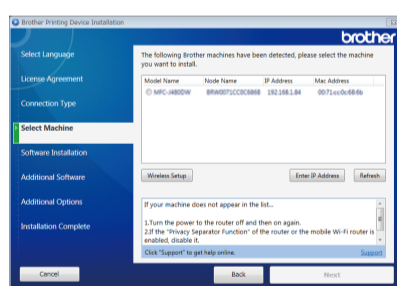
Select the SSID. Enter the Network key.

The LCD displays [Connected].

#### NOTE:

For information on how to enter text, see the printed *Reference Guide*.

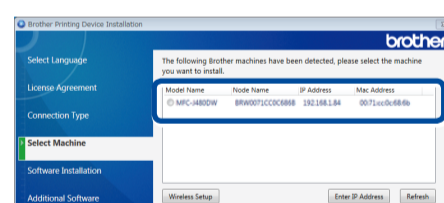
To use with your computer, follow Step 5 until the **Select Machine** screen appears, listing all machines in your network.



Select your machine.

Follow the on-screen instructions to continue installation.

Finish



#### NOTE:

- When finished, restart your computer.
- If connection is unsuccessful, see **Cannot set up your machine?** below.

To use with your mobile device, go to **Print using your mobile device**.

## Print using your mobile device

Before printing from your mobile device, your machine must be configured according to step 5 or **WiFi Alternate wireless configuration method (Setup Wizard)**.



Download "Brother iPrint&Scan" to start using your machine with mobile devices.

[solutions.brother.com/ips](http://solutions.brother.com/ips)



AirPrint is available for OS X and iOS users.

For more information, see the *AirPrint Guide* on your model's **Manuals** web page.

[solutions.brother.com/manuals](http://solutions.brother.com/manuals)

## Cannot set up your machine?



Wired network



USB



Wireless network

Disconnect the cable.

Restart your machine, computer and/or mobile device.



Repeat 5.

Go to **WiFi Alternate wireless configuration method (Setup Wizard)**.

#### NOTE:

If you repeat these steps and connection is still unsuccessful, please visit the Brother Solutions Center at: <http://support.brother.com>.



Brother support website <http://support.brother.com>