

Quick Start Guide

Hardware Connections

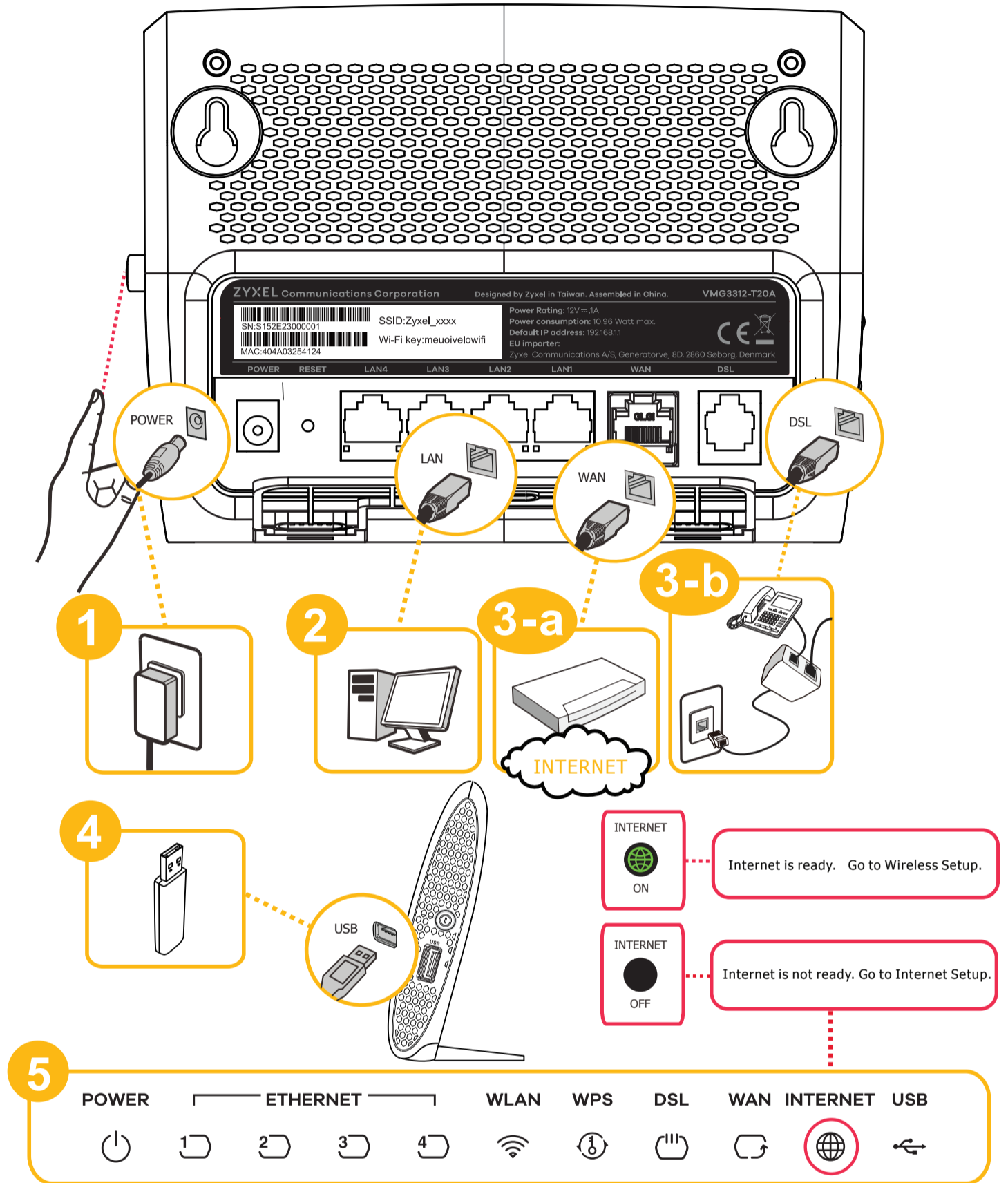
1 Connect the power cable and press the power button.

2 Connect a computer using the yellow Ethernet cable.

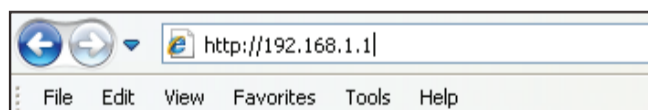
3 Connect a broadband modem or router (3-a) using an Ethernet cable.
OR
Connect a DSL splitter (3-b) using the gray telephone cable.

4 Connect a 3G dongle.

5 Check the LEDs.



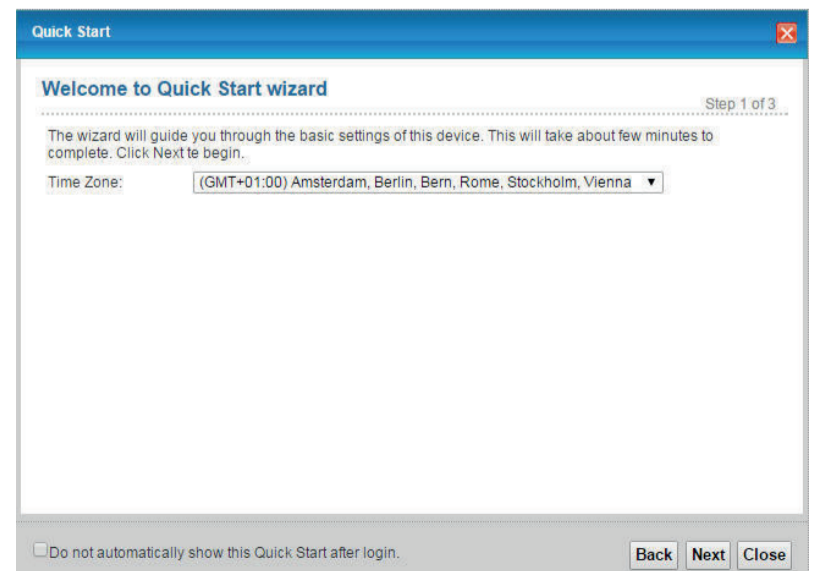
Internet Setup



IP Address: 192.168.1.1



Quick Start



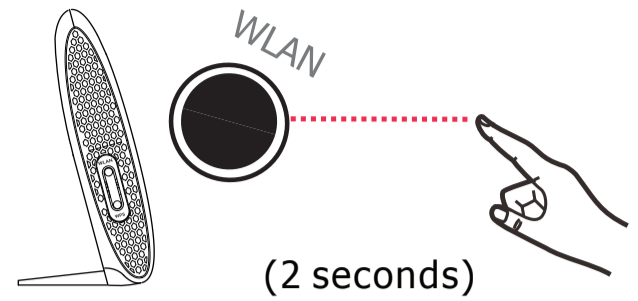
See the User's Guide at www.zyxel.com for more information

Wireless Setup

Check Wi-Fi is on.



If not, turn it on.

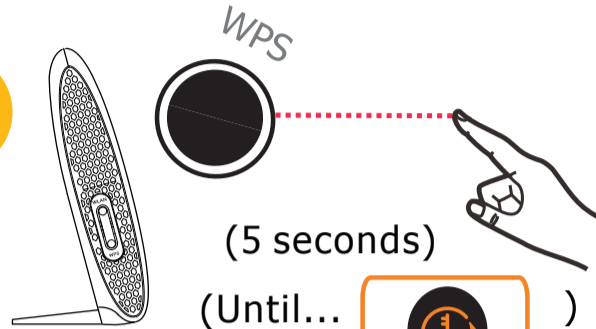


Secure Wi-Fi with WPS

1

Press the WPS button until the WPS LED blinks orange.

1



2

Press the WPS button on the client.



(Within 2 Minutes)

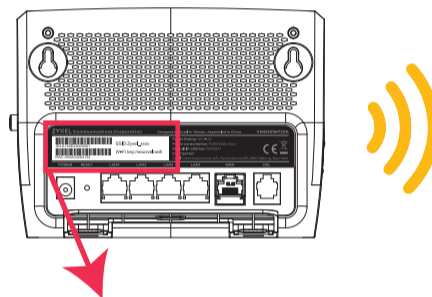


No WPS

1

The SSID and wireless key are on the device sticker.

1



2

Find the device with this SSID. Enter the wireless key to connect.



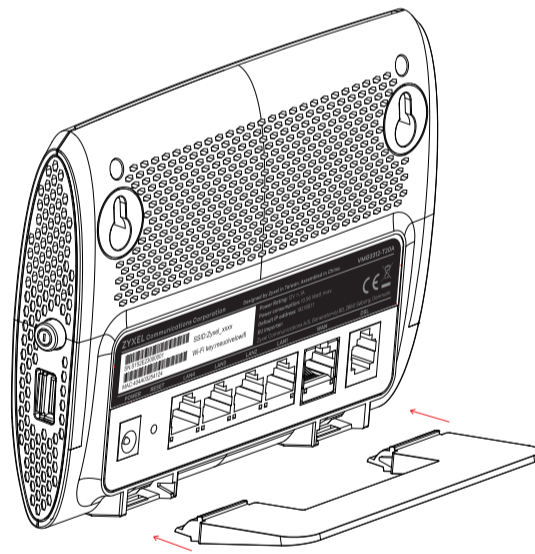
SSID
Wireless key



Freestanding Installation

1

Connect the stand carefully as shown.



2

Place the device vertically on a smooth level surface.

Troubleshooting

Power, Hardware Connections, and LEDs

- Make sure the VMG is turned on.
- Make sure the power adaptor or cord is connected to the VMG and plugged in to an appropriate power source. Make sure the power source is turned on.
- Check the hardware connections.

VMG Access and Login

- Make sure you are using the correct IP address.
 - The default IP address is 192.168.1.1.
 - If you changed the IP address, use the new IP address.
- Check the hardware connections, and make sure the LEDs are behaving as expected.
- Make sure your Internet browser does not block pop-up windows and has JavaScript and Java enabled.
- Make sure your computer is in the same subnet as the VMG.

See the User's Guide for more troubleshooting.

EU Importer: ZyXel Communications, A/S | Generatorvej 8D, 2860 Søborg, Denmark | <http://www.zyxel.dk>
 US Importer: ZyXel Communications, Inc | 1130 North Miller Street Anaheim, CA 92806-2001 | <http://www.us.zyxel.com>

Open Source Licenses
 This product contains in part some free software distributed under GPL license terms and/or GPL like licenses.
 Open source licenses are provided with the firmware package. You can download the latest firmware at www.zyxel.com.
 If you cannot find it there, contact your vendor or ZyXEL Technical Support at support@zyxel.com.tw.
 To obtain the source code covered under those Licenses, please contact your vendor or ZyXEL Technical Support at support@zyxel.com.tw.