

LGB1108A
LGB1126A
LGB1148A



10-, 26-, or 48-Port Gigabit Managed Switch

Quick Start Guide

An affordable managed switch with the power to be a key component of your network infrastructure.



**Customer
Support
Information**

Order toll-free in the U.S.: Call 877-877-BBOX (outside U.S. call 724-746-5500)
FREE technical support 24 hours a day, 7 days a week: Call 724-746-5500 or fax 724-746-0746
www.blackbox.com • info@blackbox.com

Trademarks

Trademarks Used in this Manual

Black Box and the Double Diamond logo are registered trademarks of BB Technologies, Inc.

Intel is a registered trademark of Intel Corporation

Xerox is a registered trademark of Xerox Corporation.

Any other trademarks mentioned in this manual are acknowledged to be the property of the trademark owners.

We're here to help! If you have any questions about your application or our products, contact Black Box Tech Support at **724-746-5500** or go to **blackbox.com** and click on "Talk to Black Box." You'll be live with one of our technical experts in less than 60 seconds.

Federal Communications Commission and Industry Canada Radio Frequency Interference Statements

This equipment generates, uses, and can radiate radio-frequency energy, and if not installed and used properly, that is, in strict accordance with the manufacturer's instructions, may cause interference to radio communication. It has been tested and found to comply with the limits for a Class A computing device in accordance with the specifications in Subpart B of Part 15 of FCC rules, which are designed to provide reasonable protection against such interference when the equipment is operated in a commercial environment. Operation of this equipment in a residential area is likely to cause interference, in which case the user at his own expense will be required to take whatever measures may be necessary to correct the interference.

Changes or modifications not expressly approved by the party responsible for compliance could void the user's authority to operate the equipment.

This digital apparatus does not exceed the Class A limits for radio noise emission from digital apparatus set out in the Radio Interference Regulation of Industry Canada.

Le présent appareil numérique n'émet pas de bruits radioélectriques dépassant les limites applicables aux appareils numériques de la classe A prescrites dans le Règlement sur le brouillage radioélectrique publié par Industrie Canada.

Instrucciones de Seguridad (Normas Oficiales Mexicanas Electrical Safety Statement)

1. Todas las instrucciones de seguridad y operación deberán ser leídas antes de que el aparato eléctrico sea operado.
2. Las instrucciones de seguridad y operación deberán ser guardadas para referencia futura.
3. Todas las advertencias en el aparato eléctrico y en sus instrucciones de operación deben ser respetadas.
4. Todas las instrucciones de operación y uso deben ser seguidas.
5. El aparato eléctrico no deberá ser usado cerca del agua—por ejemplo, cerca de la tina de baño, lavabo, sótano mojado o cerca de una alberca, etc.
6. El aparato eléctrico debe ser usado únicamente con carritos o pedestales que sean recomendados por el fabricante.
7. El aparato eléctrico debe ser montado a la pared o al techo sólo como sea recomendado por el fabricante.
8. Servicio—El usuario no debe intentar dar servicio al equipo eléctrico más allá a lo descrito en las instrucciones de operación. Todo otro servicio deberá ser referido a personal de servicio calificado.
9. El aparato eléctrico debe ser situado de tal manera que su posición no interfiera su uso. La colocación del aparato eléctrico sobre una cama, sofá, alfombra o superficie similar puede bloquea la ventilación, no se debe colocar en libreros o gabinetes que impidan el flujo de aire por los orificios de ventilación.
10. El equipo eléctrico debe ser situado fuera del alcance de fuentes de calor como radiadores, registros de calor, estufas u otros aparatos (incluyendo amplificadores) que producen calor.
11. El aparato eléctrico deberá ser conectado a una fuente de poder sólo del tipo descrito en el instructivo de operación, o como se indique en el aparato.
12. Precaución debe ser tomada de tal manera que la tierra física y la polarización del equipo no sea eliminada.
13. Los cables de la fuente de poder deben ser guiados de tal manera que no sean pisados ni pellizcados por objetos colocados sobre o contra ellos, poniendo particular atención a los contactos y receptáculos donde salen del aparato.
14. El equipo eléctrico debe ser limpiado únicamente de acuerdo a las recomendaciones del fabricante.
15. En caso de existir, una antena externa deberá ser localizada lejos de las líneas de energía.
16. El cable de corriente deberá ser desconectado del cuando el equipo no sea usado por un largo periodo de tiempo.
17. Cuidado debe ser tomado de tal manera que objetos líquidos no sean derramados sobre la cubierta u orificios de ventilación.
18. Servicio por personal calificado deberá ser provisto cuando:
 - A: El cable de poder o el contacto ha sido dañado; u
 - B: Objetos han caído o líquido ha sido derramado dentro del aparato; o
 - C: El aparato ha sido expuesto a la lluvia; o
 - D: El aparato parece no operar normalmente o muestra un cambio en su desempeño; o
 - E: El aparato ha sido tirado o su cubierta ha sido dañada.

Table of Contents

- 1. Specifications 6
 - 1.1 Physical Characteristics 6
 - 1.2 Switch Features 6
 - 1.3 Management Features..... 7
 - 1.4 Standards 7
 - 1.5 Compliances 7
- 2. Overview 8
 - 2.1 Introduction..... 8
 - 2.2 Features..... 9
 - 2.3 Description of Hardware..... 10
- 3. Network Planning..... 12
 - 3.1 Introduction to Switching..... 12
 - 3.2 Application Examples 12
- 4. Installation 14
 - 4.1 Selecting a Site..... 14
 - 4.2 Ethernet Cabling..... 14
 - 4.3 Equipment Checklist..... 14
 - 4.4 What’s Included 15
 - 4.5 Mounting Instructions 15
- 5. Network Connections 22
 - 5.1 Connecting Network Devices 22
 - 5.2 Twisted-Pair Devices 22
- 6. Labeling Connections 26
- 7. Troubleshooting..... 27
- 8. Power and Cooling Problems 29
 - 8.1 When You Turn the Unit On 29
 - 8.2 In-band Access 29
- 9. Cabling 30
- 10. Glossary 34

Chapter 1: Specifications

1. Specifications

1.1 Physical Characteristics

Aggregate Bandwidth — 20 Gbps

Buffer Architecture — 1392 KB on-chip frame buffer

Network Interface — LGB1108A: Ports 1-8: RJ-45 connector, Auto MDI-X; Ports 9-10: RJ-45 connector/(100/1000M) SFP;

10BASE-T: RJ-45 (100-ohm, UTP cable; Category 3 or better);

100BASE-TX: RJ-45 (100-ohm, UTP cable; Category 5 or better);

1000BASE-T: RJ-45 (100-ohm, UTP or STP cable; Category 5, 5e, or 6);

LGB1126A: Ports 1–20: RJ-45 connector, Auto MDI-X; Ports 21–24: RJ-45 connector/(100/1000M) SFP, Ports 25–26: 100/1000M SFP,

10BASE-T: RJ-45 (100-ohm, UTP cable; Category 3 or better);

100BASE-TX: RJ-45 (100-ohm, UTP cable; Category 5 or better);

1000BASE-T: RJ-45 (100-ohm, UTP or STP cable; Category 5, 5e, or 6);

LGB1148A: Ports 1–44: RJ-45 connector, Auto MDI-X; Ports 45–48: RJ-45 connector/(100/1000M) SFP,

10BASE-T: RJ-45 (100-ohm, UTP cable; Category 3 or better);

100BASE-TX: RJ-45 (100-ohm, UTP cable; Category 5 or better);

1000BASE-T: RJ-45 (100-ohm, UTP or STP cable; Category 5, 5e, or 6)

Ports — LGB1108A: (8) 10/100/1000 Mbps TP; (2) 100/1000 Mbps SFP Fiber/(10/100/1000 Mbps) TP dual-media ports, (1) RJ-45 console port;

LGB1126A: (20) 10/100/1000 Mbps TP, (4) 100/1000 Mbps SFP Fiber/(10/100/1000 Mbps) TP dual-media ports, (2) 10/1000M SFP ports, (1) RJ-45 console port;

LGB1148A: (44) 10/100/1000 Mbps TP, (4) 100/1000 Mbps SFP Fiber/(10/100/1000 Mbps) TP dual media ports, (1) DB9 console port

Switching Database — 8K MAC address entries

User Controls — LGB1108A, LGB1126A: (1) Reset button;

LGB1148A: (1) Mode button

Indicators — LEDs: System: Power; TP Port: status (LINK/ACT), 10/100/1000M;

SFP Port: status (LINK/ACT/SPD), 100/1000M

Temperature Tolerance — Operating: 32 to 104° F (0 to 40° C)

Humidity Tolerance — Operating: 5% to 90% (non-condensing)

Power — Input: 100–240 VAC, 50–60 Hz internal power supply, autosensing;

Consumption: 20 Watts maximum

Dimensions — LGB1108A: 1.7" H x 11" W x 6.5" D (4.4 x 28 x 16.6 cm);

LGB1126A: 1.75" (1U) H x 17.4"W x 8.3"D (4.4 x 44.2 x 21.1 cm);

LGB1148A: 1.75" (1U) H x 17.4"W x 11.8"D (4.4 x 44.2 x 30 cm)

Weight — LGB1108A: 2.97 lb. (1.35 kg);

LGB1126A: 5.3 lb. (2.4 kg);

LGB1148A: 9 lb. (4.1 kg)

1.2 Switch Features

Flow Control — Full-duplex: IEEE 802.3x

Half-duplex: Backpressure

Forwarding Mode — Store-and-forward

Throughput — 35.71 Mbps

1.3 Management Features

In-Band Management — SSH/SSL, Telnet, SNMP, or HTTP

Out-of-Band Management — RS-232 (RJ-45 console port)

Software loading — HTP, TFTP in-band, Console out-of-band

1.4 Standards

Standards — IEEE 802.3: 10BASE-T Ethernet (twisted-pair copper),

IEEE 802.3u: 100BASE-TX Ethernet (twisted-pair copper),

IEEE 802.3ab: 1000BASE-TX Ethernet (twisted-pair copper),

IEEE 802.3z: 1000BASE-X Ethernet,

IEEE 802.3x: flow control capability,

ANSI/IEEE 802.3: autonegotiation,

IEEE 802.1Q: VLAN,

IEEE 802.1p: Class of service,

IEEE 802.1X: Access control,

IEEE 802.1D: Spanning tree,

IEEE 802.1w: Rapid spanning tree,

IEEE 802.1s: Multiple spanning tree,

IEEE 802.3ad: Link aggregation control protocol (LACP),

IEEE 802.1AB: Link layer discovery protocol (LLDP)

1.5 Compliances

Compliance — EN55022 (CISPR 22) Class A EN 61003

FCC Class A

CE Mark

Immunity — EN61000-4-2/3/4/5/6/8/11, EN 55024

2 Overview

2.1 Introduction

The 10-, 26-, or 48-Port Gigabit Managed Switch is an affordable managed switch that is a key part of a reliable infrastructure for your business network. This switch delivers the kind of intelligent features you need:

- to improve the availability of your critical business applications;
- to protect your sensitive information; and
- to optimize your network bandwidth.

Easy to set up and use, the Gigabit Managed Switch provides stable and quality performance to support all types of data, voice, security, and wireless technologies. It provides the ideal combination of affordability and capabilities for entry-level networking for small businesses or home office applications and helps create a more efficient, better-connected workforce.

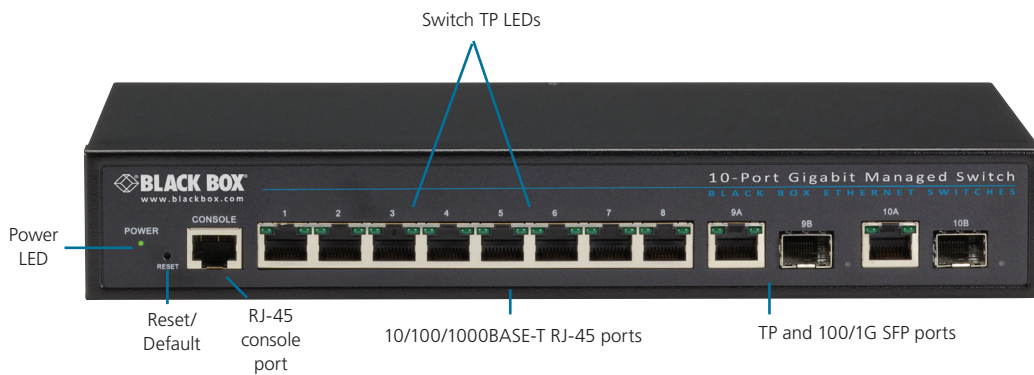


Figure 2-1. Front panel of the 10-Port Gigabit Managed Switch (LGB1108A).

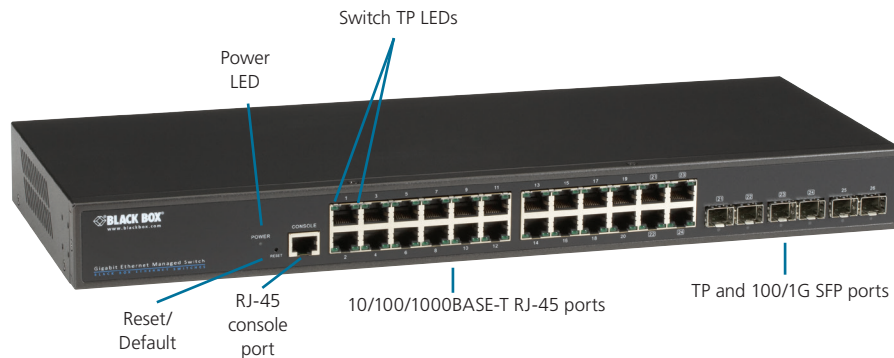


Figure 2-2. Front panel of the 26-Port Gigabit Managed Switch (LGB1126A).

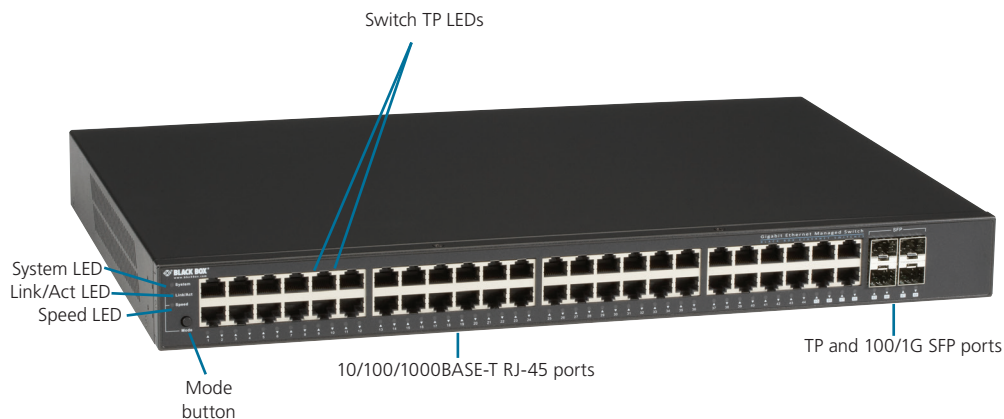


Figure 2-3. Front panel of the 48-Port Gigabit Managed Switch (LGB1148A).

NOTE: The 26-Port Gigabit Managed Switch's front panel is similar to the 10-Port Switch. Both switches have the same Power LED and Reset/Default button. The LGB1108A has (8) 10/100/1000BASE-T RJ-45 ports, (2) TP and 100/1G SFP ports, (16) switch TP LEDs, and (1) RJ-45 console port. The LGB1126A has (20) 10/100/1000BASE-T RJ-45 ports, (4) dual-media UTP/SFP ports, (2) SFP ports, (40) switch TP LEDs, and (1) RJ-45 console port. The LGB1148A has (44) 10/100/1000BASE-T RJ-45 ports, (4) dual-media UTP/SFP ports, (88) switch TP LEDs, (1) DB9 console port, and (1) Mode button.

2.2. Features

- **Switch Architecture:** This switch performs a wire-speed, non-blocking switching fabric, which enables wire-speed transport of multiple packets at low latency on all ports simultaneously. The switch also features full-duplex capability on all ports, which effectively doubles the bandwidth of each connection. It uses store-and-forward technology to ensure maximum data integrity. With this technology, the entire packet must be received into a buffer and checked for validity before being forwarded. This prevents errors from being propagated throughout the network.
- **Network Management Options:** The switch can also be managed over the network with a Web browser or Telnet application. The switch includes a built-in network management agent that allows it to be managed in-band using SNMP or RMON (Groups 1, 2, 3, 9) protocols. It also has an RJ-45 console port connector on the front panel for out-of-band management. A PC may be connected to this port for configuration and monitoring out-of-band via a null-modem serial cable. (For more information on cabling, see Chapter 9: Cables.)

NOTE: For a detailed description of the management features, refer to the User's Manual.

2.3 Description of Hardware

- **1000BASE-T Ports:** The switch contains (8), (20), or (44) 1000BASE-T RJ-45 ports. All RJ-45 ports support automatic MDI/MDI-X operation, autonegotiation, and IEEE 802.3x autonegotiation of flow control, so the optimum data rate and transmission can be selected automatically.
- **SFP Transceiver Slots:** The LBG1108A 10-Port Gigabit Managed Switch supports the small form-factor pluggable (SFP) transceiver slots, which are shared with RJ-45 port 9 and 10. In the default configuration, if an SFP transceiver (purchased separately) is installed in a slot and has a valid link on the port, the associated RJ-45 port is disabled. The LGB1126A 26-Port Gigabit Managed Switch also supports the small form-factor pluggable (SFP) transceiver slots, which are shared with RJ-45 ports 21–24, and (2) additional SFP ports. The LGB1148A 48-Port Gigabit Managed Switch has (4) dual-media UTP/SFP ports (Ports 45–48).

The following table shows a list of transceiver types that have been tested with the switch. For an updated list of vendors supplying these transceivers, contact your local dealer. For information on the recommended standards for fiber optic cabling, see “1000-Mbps Gigabit Ethernet Collision Domain” in Section 5.2, Tables 5-1 through 5-4, or contact Tech Support at 724-746-5500.

Table 2-1: Supported SFP Transceivers

Media Standard	Filter Diameter (Microns)	Wavelength (nm)	Maximum Distance*
1000BASE-SX	50/125	850	550 m (1804.5 ft.)
	62.5/125	850	275 m (902.2 ft.)
1000BASE-LX/LHX/ XD/ZX	9/125	1310	10 km (6.2 mi.)
	9/125	1550	30.5 km (19.0 mi.)
	9/125	1300	10 km (6.2 mi.)
1000BASE-LX Single-Strand	n/a	TX-1310/RX-1550	20 km (12.4 mi.)
	n/a	TX-1550/RX-1310	20 km (12.4 mi.)
1000BASE-T	n/a	n/a	100 m (328.1 ft.)
100BASE-FX	50/125	850	2 km (1.2 mi.)
	62.5/125	1550	15 km (9.3 mi.)

* *NOTE: Maximum distance may vary for different SFP vendors.*

Reset/Default or Mode button

The LGB1108A and LGB1126A each have a Reset/Default button. The LGB1148A has a Mode button. The Reset/Default and Mode buttons function in the same way:

The Mode or Reset button is used to change port mode display (link/speed), warm reboot, and reload defaults). To reload defaults: Press the Mode button for less than 5 seconds for a warm boot, or press the Mode button for more than 5 seconds to reset the switch back to factory default settings and reboot.

- **Port and System Status LEDs:** The switch includes a display panel for system and port indications that simplify installation and network troubleshooting. The LEDs are located on the left side of the front panels for easy viewing. Details are shown below and in Tables 2-2 and 2-3:

Table 2-2: Port Status LEDs

LED	Conditions	Status
TP (Link/ACT)	Green	Lit Green when TP link is good; blinks when any traffic is present.
TP Speed	Green	Lit Green when the TP link is on 1000 Mbps; Blinks when the TP link is on 100 Mbps; Off when the TP link is on 10 Mbps.
SFP (Link/ACT)	Green/Amber	Lit Green when the SFP link is on 1000 Mbps; Lit Amber when the SFP link is on 100 Mbps; Blinks when any traffic is present

Table 2-3: System Status LEDs

LED	Conditions	Status
Power	Green/OFF	Lit when power is on

- **Power Supply Socket:** There is a standard 120-VAC power socket on the rear panel of the switch.



Figure 2-2. Back panel.

3 Network Planning

3.1 Introduction to Switching

A network switch is one of the most important devices for today's networking technology. It enables simultaneous transmission of multiple packets, and it can partition a network more efficiently than bridges or routers. When performance bottlenecks are caused by congestion at the network access point such as a file server, devices can be connected directly to a switched port. And, by using full-duplex mode, the bandwidth of the dedicated segment can be doubled to maximize throughput.

When networks are based on repeater (hub) technology, the distance between end stations is limited by a maximum hop count. However, a switch can subdivide the network into smaller and more manageable segments, linking them to the larger network than can turn the hop count back to zero, removing the limitation.

A switch can be easily configured in any Ethernet, Fast Ethernet, or Gigabit Ethernet network to significantly increase bandwidth while using conventional cabling and network cards.

3.2 Application Examples

The Gigabit Managed Switch uses (8), (20), or (44) Gigabit Ethernet TP ports with Auto MDI-X and two slots for the removable SFP module, which supports a number of types of fiber connections, including LC and BiDi-LC modules. It is not only designed to segment your network, but also to provide a wide range of options in setting up network connections. Some typical applications showing the 10-Port Gigabit Managed Switch (LGB1108A) are described below.

NOTE: The LGB1126A and LGB1148A are similar to the LGB1108A, but have (20) or (44) Gigabit ports. The LGB1126A and LGB1148A also have dual-media SFP(10/100/1000) ports, which are described in the specifications section of this manual.

- Remote site application in enterprise or small businesses.
- Peer-to-peer application when used in two remote offices.
- Office network.
- High-performance requirement environment.
- Advanced security for network safety applications.
- Data, voice, and videoconferencing applications.

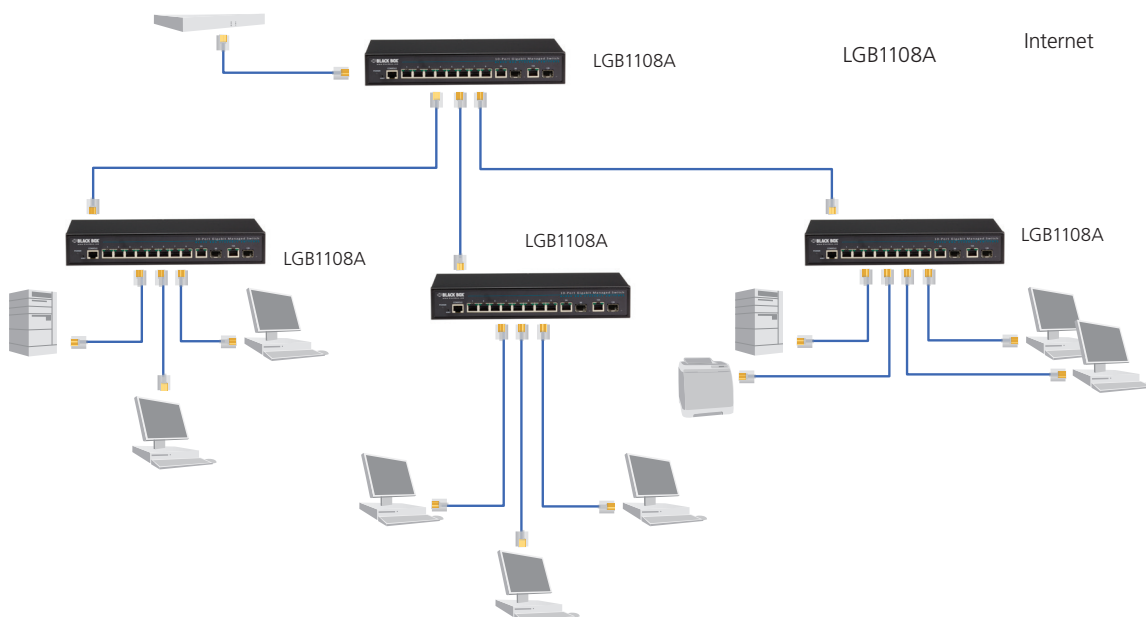


Figure 3-1. Network connection between remote site and central site.

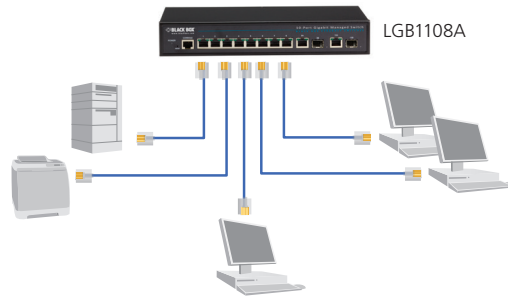


Figure 3-2. Peer-to-peer network connection

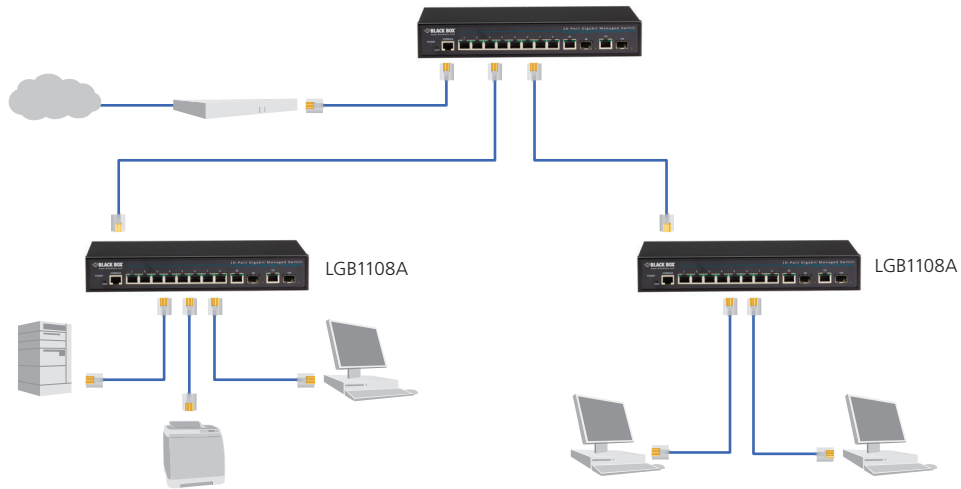


Figure 3-3. Office network connection

Chapter 4: Installation

4 Installation

4.1 Selecting a Site

The switch can be mounted in a standard 19-inch equipment rack (via an optional rackmount kit) or on a flat surface. Be sure to follow the guidelines below when choosing a location.

The site should:

- Be at the center of all the devices you want to link and near a power outlet.
- Be able to maintain its temperature within 32 to 104° F (0 to 40° C) and its humidity within 10 to 90%, noncondensing.
- Be accessible for installing, cabling and maintaining the devices.
- Allow the status LEDs to be clearly visible.

Make sure the twisted-pair Ethernet cable is always routed away from power lines, radios, transmitters or any other electrical interference.

Make sure that the 10-Port Gigabit Managed Switch is connected to a separate grounded power outlet that provides 100 to 240 VAC, 50 to 60 Hz.

4.2 Ethernet Cabling

To ensure proper operation when installing the switch in a network, make sure that the current cables are suitable for 100BASE-TX or 1000BASE-T operation. Check the following criteria against the current installation of your network:

- Cable type: Unshielded twisted pair (UTP) or shielded twisted pair (STP) cable with RJ-45 connectors; Category 5 or Category 5e with a maximum length of 100 meters (328.1 feet) is recommended for 100BASE-TX and Category 5e or 6 with maximum length of 100 meters (328.1 feet) is recommend for 1000BASE-T.
- Protection from radio frequency interference emissions.
- Electrical surge suppression.
- Separation of electrical wires and data based network wiring.
- Safe connections with no damaged cables, connectors, or shields.

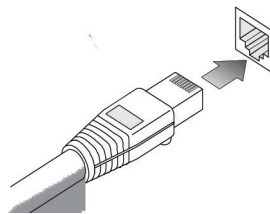


Figure 4-1. RJ-45 connections.

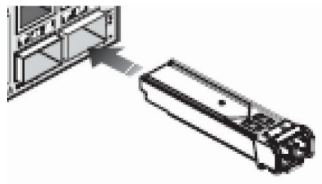


Figure 4-2. SFP transceiver.

4.3 Equipment Checklist

After unpacking this switch, please check the contents to be sure you have received all the components. Then, before beginning the installation, be sure you have all other necessary installation equipment.

4.4 What's Included

- 10-, 26-, or 48-Port Gigabit Managed Switch (LGB1108A, LGB1126A, or LGB1148A)
- AC power cord
- (4) Adhesive rubber feet
- Mounting accessory (for 19" rack, optional)
- RS-232 to RJ-45 console cable (for LGB1108A and LGB1126A) or DB9 to DB9 console cable (for LGB1148A)
- This installation guide
- User's manual on CD

NOTE: Call Black Box immediately if any of these items is missing or damaged.

WARNING: The mini-GBICs are Class 1 Laser Devices. Avoid direct eye exposure to the beam coming from the transmit port.

4.5 Mounting Instructions

The switch can be mounted in a standard 19-inch equipment rack or on a desktop or shelf.

Rackmounting

Before rackmounting the switch, check the following:

- Temperature: Since the temperature within a rack assembly may be higher than the ambient room temperature, check that the rack environment temperature is within the specified operating temperature range 32 to 104° F (0 to 40 ° C).
- Mechanical loading: Do not place any equipment on top of a rackmounted unit.
- Circuit overloading: Be sure that the supply circuit to the rack assembly is not overloaded.
- Grounding: Rackmounted equipment should be properly grounded.

To rackmount devices

Step 1: Attach the brackets to the device using the screws provided in the mounting accessory.

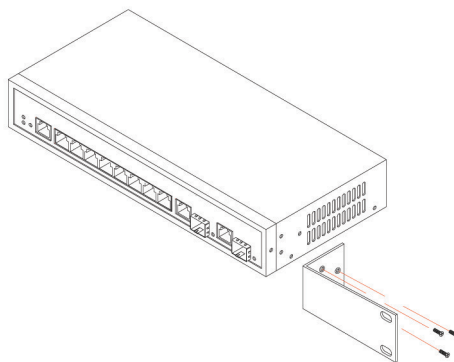


Figure 4-3. Attaching the brackets.

Chapter 4: Installation

Step 2. Mount the device in the rack (using an optional rackmount kit), using four rackmounting screws (not provided). Be sure to secure the lower rackmounting screws first to prevent the brackets from being bent by the weight of the switch.

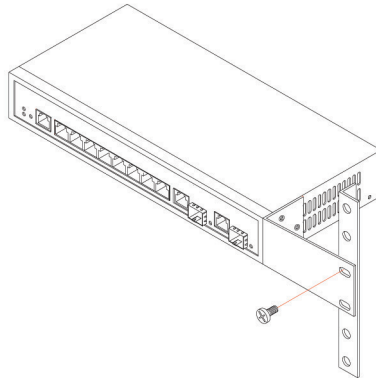


Figure 4-4 Installing the switch in a rack.

Step 3. If installing a single switch only, turn to “Connection to a power source” later in this chapter.

Step 4. If installing multiple switches, mount them in the rack, one below the other, in any order.

Desktop or Shelf Mounting

Step 1: Attach the four adhesive rubber feet to the bottom of the first switch.

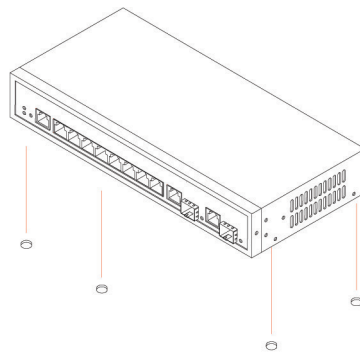


Figure 4-5. Attaching the adhesive rubber feet.

Step 2. Set the device on a flat surface near an AC power source, making sure there are at least two inches of space on all sides for proper airflow.

Step 3. If installing a single switch only, go to “Connecting to a Power Source” later in this chapter.

Step 4. If installing multiple switches, attach four adhesive feet to each one. Place each device squarely on top of the one below, in any order.

Installing an Optional SFP Transceiver

You can install or remove a mini-GBIC SFP from a mini-GBIC slot without powering off the switch.

NOTE: On the LGB1108A, the mini-GBIC slots are shared with the two 10/100/1000BASE-T RJ-45 ports. If a mini-GBIC is installed in a slot, the associated RJ-45 port is disabled and cannot be used. The LGB1126A has (4) dual-media SFP(10/100/11000) RJ-45 and (2) SFP ports. The LGB1148A has (4) dual-media ports SFP(10/100/1000) RJ-45.

NOTE: The mini-GBIC ports operate only at full-duplex. Half-duplex operation is not supported.

NOTE: Ensure the network cable is NOT connected when you install or remove a mini-GBIC.

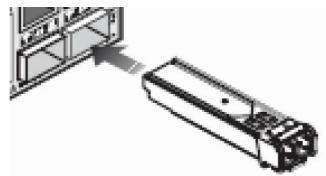


Figure 4-6. Inserting an SFP transceiver into a slot.

Table 4-1: Supported SFP Transceivers

Model Name	Description
These models are available. Contact Tech Support for the correct SFP for your application.	1000BASE-SX GE SFP Fiber Module, LC Multimode 850 nm
	1000BASE-SX GE SFP Fiber Module, LC Multimode 1310 nm 2 km
	1000BASE-LX GE SFP Fiber Module, LC Single-Mode 10 km
	1000BASE-LX GE SFP Fiber Module, LC Single-Mode 30 km
	1000BASE-LX GE SFP Fiber Module, LC Single-Mode 50 km
	1000BASE-LX GE SFP Fiber Module, LC Single-Mode 50 km
	1000BASE-LX GE SFP Fiber Module, Bidi LC Single-Mode 10 km, 1310 nm
	1000BASE-LX GE SFP Fiber Module, Bidi LC Single-Mode 20 km, 1550 nm
	1000BASE-LX GE SFP Fiber Module, Bidi LC Single-Mode 20 km, 1310 nm
	100BASE-FX FE SFP Fiber Module, LC Multimode 2 km, 850 nm and 1310 nm
	100BASE-FX FE SFP Fiber Module, LC Single-Mode 20 km, 1310 nm

To Install an SFP Transceiver

Step 1. Consider network and cabling requirements to select an appropriate SFP transceiver type.

Step 2. Insert the transceiver with the optical connector facing outward and the slot connector facing down. Note that SFP transceivers are keyed so they can only be installed in one orientation.

Step 3. Slide the SFP transceiver into the slot until it clicks into place.

NOTE: SFP transceivers are not provided in the switch package.

Chapter 4: Installation

Connecting to a Power Source:

You can plug or remove the power cord from the AC power socket to switch the power on and off .

Step 1. Insert the power cable plug directly into the AC socket located at the back of the switch.

Step 2. Plug the other end of the cable into a grounded, 3-pin, AC power source.

Step 3. Check the front-panel LEDs as the device is powered on to be sure the POWER LED is lit. If it isn't, check that the power cable is plugged in correctly.

WARNING: For international use, you may need to change the AC power cable. You must use a power cable set that has been approved for the socket type in your country.

Connecting to the Console Port

The RJ-45 serial port on the switch's front panel is used to connect to the switch for out-of-band console configuration. The command-line-driven configuration program can be accessed from a terminal or a PC running a terminal emulation program. The pin assignments used to connect to the serial port are provided in Table 4-2.

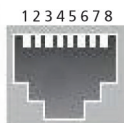


Figure 4-7. Serial port (RJ-45) pinout.

Wiring Map for Serial Cable

Table 4-2: Supported SFP Transceivers

Switch's 8-Pin Serial Port	Null Modem	PC's 9-Pin DTE Port
2 RXD (receive data)	<-----	3 TXD (transmit data)
3 RXD (receive data)	----->	2 RXD (receive data)
5 SGND (Signal ground)	-----	5 SGND (Signal ground)

NOTE: No other pins are used.

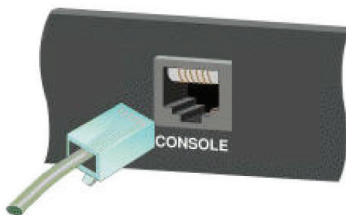


Figure 4-8. Plug in the console port.

The serial port's configuration requirements are as follows:

- Default baud rate—115,200 bps
- Character size—8 characters
- Parity—None
- Stop bit—One
- Data bits—8
- Flow control—none

Using Web-based Management

The default values of the managed switch are listed in the table below:

Table 4-3: Using Web-based Management

IP Address	192.168.1.1
Subnet Mask	255.255.255.0
Default	192.168.1.254
Username	admin
Password	

Chapter 4: Installation

After configuring the managed switch in the CLI via the switch's serial interface, you can browse it. For instance, type "http://192.168.1.1" [without the quotes] in the address bar in a browser, and it will show the following screen and ask you to log in. When you log in the first time, the default username is "admin". and the password field remains blank.



Figure 4-9. Web User Interface screen.

NOTE: If you need to configure the function or parameter, refer to the detail in the User Guide. Or access the switch and click "help" under the Web GUI. A help screen will provide you with help content to walk you through the process of setting the parameters.

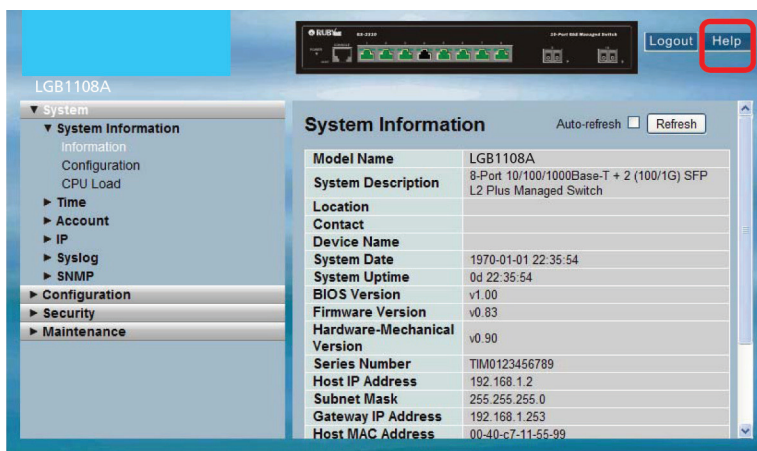


Figure 4-10. Web Help Function screen.

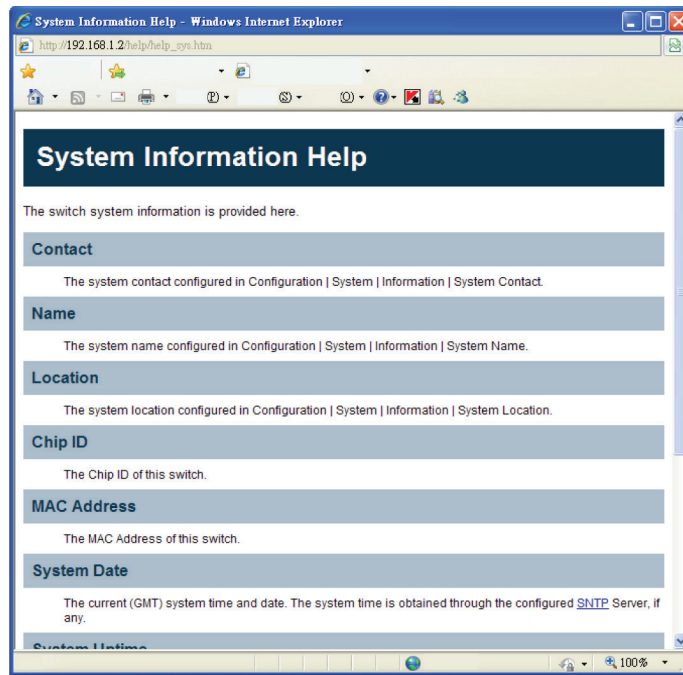


Figure 4-11. System Information Help screen.

5 Network Connections

5.1 Connecting Network Devices

The switch is designed to be connected to 10-, 100- or 1000-Mbps network cards in PCs and servers, as well as to other switches and hubs. It may also be connected to remote devices using optional SFP transceivers.

5.2 Twisted-Pair Devices

Each device requires an unshielded twisted-pair (UTP) cable with RJ-45 connectors at both ends. Use Category 5, 5e, or 6 cable for 1000BASE-T connections; use Category 5 or better for 100BASE-TX connections.

Cabling Guidelines

The RJ-45 ports on the switch support automatic MDI/MDI-X pinout configuration, so you can use standard straight-through twisted-pair cables to connect to any other network device (PCs, servers, switches, routers, or hubs).

For more information on cabling, see Chapter 9: Cables.

CAUTION: Do not plug a phone jack connector into an RJ-45 port. This will damage the switch. Use only twisted-pair cables with RJ-45 connectors that conform to FCC standards.

Connecting to PCs Servers, Hubs, and Switches

Step 1: Attach one end of a twisted-pair cable segment to the device's RJ-45 connector.

Step 2: If the device is a network card and the switch is in the wiring closet, attach the other end of the cable segment to a modular wall outlet that is connected to the wiring closet. (See the next section "Network Wiring Connections.") Otherwise, attach the other end to an available port on the switch.

Make sure each twisted-pair cable does not exceed 328 ft. (100 meters) in length.

NOTE: Avoid using flow control on a port connected to a hub unless it is actually required to solve a problem. Otherwise backpressure jamming signals may degrade overall performance for the segment attached to the hub.

Step 3. As each connection is made, the Link LED (on the switch) corresponding to each port will light green (1000 Mbps) or amber (100 Mbps) to indicate that the connection is valid.

Network Wiring Connections

Today, the punchdown block is an integral part of many of the newer equipment racks. It is actually part of the patch panel. Instructions for making connections in the wiring closet with this type of equipment follows.

Step 1. Attach one end of a patch cable to an available port on the switch and the other end to the patch panel.

Step 2. If not already in place, attach one end of a cable segment to the back of the patch panel where the punchdown block is located, and the other end to a modular wall outlet.

Step 3. Label the cables to simplify future troubleshooting. See Chapter 6: Labeling Connections.

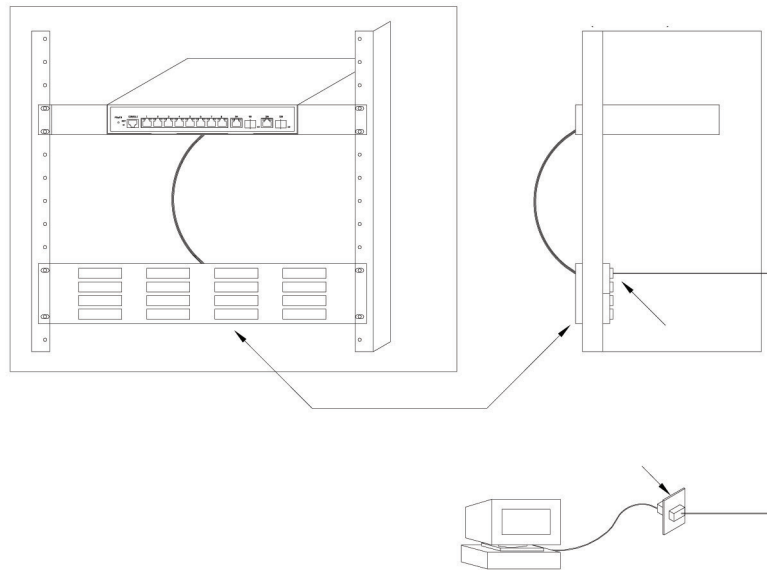


Figure 5-1. Network wiring connections.

Fiber Optic SFP Devices

An optional Gigabit SFP transceiver can be used for a backbone connection between switches, or for connecting to a high-speed server. Each single-mode fiber port requires 9-/125- micron single-mode fiber optic cable with an LC connector at both ends. Each multimode fiber optic port requires 50-/125- or 62.5-/125-micron multimode fiber optic cabling with an LC connector at both ends.

WARNING: This switch uses lasers to transmit signals over fiber optic cable. The lasers are inherently eye safe in normal operation. However, users should never look directly at a transmit port when it is powered on.

Step 1. Remove and keep the LC port's rubber plug. When not connected to a fiber cable, the rubber plug should be replaced to protect the optics.

Step 2. Check that the fiber terminators are clean. You can clean the cable plugs by wiping them gently with a clean tissue or cotton ball moistened with a little ethanol. Dirty fiber terminators on fiber optic cables will impair the quality of the light transmitted through the cable and lead to degraded performance on the port.

Step 3. Connect one end of the cable to the LC port on the switch and the other end to the LC port on the other device. Since LC connectors are keyed, the cable can be attached in only one orientation.

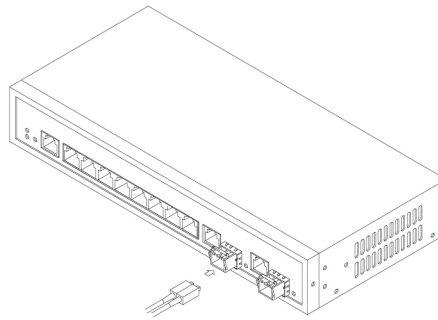


Figure 5-2. Making the fiber port connections.

Step 4. As a connection is made, check the Link LED on the switch corresponding to the port to be sure that the connection is valid.

The fiber optic ports operate at 1 Gbps. The maximum length for fiber optic cable operating at Gigabit speed will depend on the fiber type as listed in Tables 5-1 to 5-4.

Connectivity Rules

When adding hubs to your network, note that because switches break up the path for connected devices into separate collision domains, you should not include the switch or connected cabling in your calculations for cascade length involving other devices.

1000BASE-T Cable Requirements

All Category 5 UTP cables that are used for 100BASE-TX connections should also work for 1000BASE-T, providing that all four wire pairs are connected. However, it is recommended that for all critical connections, or any new cable installations, Category 5e or Category 6 cable should be used. The Category 5e and 6 specifications include test parameters that are only recommendations for Category 5. Therefore, the first step in preparing existing Category 5 cabling for running 1000BASE-T is a simple test of the cable installation to be sure that it complies with the IEEE 802.3-2005 standards.

1000-Mbps Gigabit Ethernet Collision Domain

Table 5-1: Maximum 1000BASE-T Gigabit Ethernet cable length.

Cable Type	Maximum Cable Length	Connector
Category 5, 5e, or 6 100-ohm UTP or STP	100 m (328 ft.)	RJ-45

Table 5-2: Maximum 1000BASE-SX Gigabit fiber cable lengths.

Fiber Size	Fiber Bandwidth	Maximum Cable Length	Connector
62.5/125 micron multimode	160 MHz/km	220 m (722 ft.)	LC
	200 MHz/km	275 m (902 ft.)	LC
50/125 micron multimode	400 MHz/km	500 m (1641 ft.)	LC
	500 MHz/km	550 m (1805 ft.)	LC

Table 5-3: Maximum 1000BASE-LX/LHX/XD/ZX Gigabit fiber cable lengths.

Fiber Size	Fiber Bandwidth	Maximum Cable Length	Connector
9/125 micron single-mode fiber 1310 nm	n/a	10 km (6.2 miles)	LC
9/125 micron single-mode fiber 1550 nm	n/a	30 km (18.6 miles.)	LC
		50 km (31.1 miles.)	LC

Table 5-4: Maximum 1000BASE-SX Gigabit fiber cable lengths.

Fiber Size	Fiber Bandwidth	Maximum Cable Length	Connector
Single-mode TX-1310 nm RX-1550 nm	n/a	20 km (12.4 miles)	BIDI
			LC
Single-mode TX-1310 nm RX-1550 nm	n/a	20 km (12.4 miles)	BIDI
			LC

100-Mbps Fast Ethernet Collision Domain

Table 5-5: Maximum Fast Ethernet cable length.

Cable Type	Maximum Cable Length	Connector
Category 5, 5e, or 6 100-ohm UTP or STP	100 m (328 ft.)	RJ-45

6 Labeling Connections

When planning a network installation, it is essential to label the opposing ends of cables and to record where each cable is connected. This will enable users to easily locate interconnected devices, isolate faults, and change your topology without wasting time.

To best manage the physical implementations of your network, follow these guidelines:

- Clearly label the opposing ends of each cable.
- Using your building's floor plans, draw a map of the location of all network-connected equipment. For each piece of equipment, identify the devices to which it is connected.
- Note the length of each cable and the maximum cable length supported by the switch ports.
- To make your labels easy to understand, use a location-based key when assigning prefixes to your cable labeling.
- Use sequential numbers for cables that originate from the same equipment.
- Differentiate between racks by naming them accordingly.
- Label each separate piece of equipment.
- Display a copy of your equipment map, including keys to all abbreviations at each equipment rack.

7 Troubleshooting

Most problems are caused by the following situations. Check for these items first when starting your troubleshooting:

Connecting to Devices That Have a Fixed Full-Duplex Configuration

The RJ-45 ports are configured as "Auto." That is, when connecting to attached devices, the switch will operate in one of two ways to determine the link speed and the communication mode (half-duplex or full-duplex):

- If the connected device is also configured to Auto, the switch will automatically negotiate both link speed and communication mode.
- If the connected device has a fixed configuration, for example 100 Mbps, at half- or full-duplex, the switch will automatically sense the link speed, but will default to a communication mode of half-duplex.

Because the 10-, 26-, or 48-Port Gigabit Managed Switch behaves in this way (in compliance with the IEEE 802.3 standard), if a device connected to the switch has a fixed configuration at full-duplex, the device will not connect correctly to the switch. The result will be high error rates and very inefficient communications between the switch and the device.

Make sure all devices connected to the 10-, 26-, or 48-Port Gigabit Managed Switch are configured to auto negotiate, or are configured to connect at half-duplex (all hubs are configured this way, for example).

Faulty or Loose Cables

Look for loose or obviously faulty connections. If they appear to be OK, make sure the connections are snug. If that does not correct the problem, try a different cable.

Non-Standard Cables

Non-standard and miswired cables may cause network collisions and other network problems, and can seriously impair network performance. Use a new correctly wired cable. For pinouts and correct cable wiring, a Category 5 cable tester is a recommended tool for every 100BASE-TX and 1000BASE-T network installation.

Improper Network Topologies

It is important to make sure you have a valid network topology. If you no longer experience the problems after reverting to your old topology, the new topology is probably at fault. In addition, you should make sure that your network topology contains no data path loops.

Check the Port Configuration

A port on your switch may not be operating as you expect because it has been put into a "blocking" state by Spanning Tree, GVRP (automatic VLANs), or LACP (automatic trunking). (Note that the normal operation of the Spanning Tree, GVRP, and LACP features may put the port in a blocking state.) Or, the port just may have been configured as disabled through software.

Table 7-1: Troubleshooting chart.

Symptom	Action
Power LED is off	Check connections between the switch, the power cord, and the wall outlet.
	Contact Black Box.
Link LED is off	Verify that the switch and attached device are powered on.
	Be sure the cable is plugged into the switch and corresponding device.
	If the switch is installed in a rack, check the connections to the punchdown block and patch panel.
	Verify that the proper cable type is used and that its length does not exceed specified limits.
	Check the adapter on the attached device and cable connections for possible defects. Replace the defective adapter or cable if necessary.

8 Power and Cooling Problems

8.1 When You Turn the Unit On

If the power indicator does not turn on when the power cord is plugged in, you may have a problem with the power outlet, power cord, or internal power supply. However, if the unit powers off after running for a while, check for loose power connections, power losses, or surges at the power outlet. If you still cannot isolate the problem, the internal power supply may be defective. Verify that all system components have been properly installed. If one or more components appear to be malfunctioning (such as the power cord or network cabling), test them in an alternate environment where you are sure that all the other components are functioning properly.

8.2 In-band Access

You can access the management agent in the switch from anywhere within the attached network using Telnet or a Web browser. However, you must first configure the switch with a valid IP address, subnet mask, and default gateway. If you have trouble establishing a link to the management agent, check to see if you have a valid network connection. Then verify that you entered the correct IP address. Also, be sure the port through which you are connecting to the switch has not been disabled. If it has not been disabled, then check the network cabling that runs between your remote location and the switch.

NOTE: The management agent accepts up to four simultaneous Telnet sessions. If the maximum number of sessions already exists, an additional Telnet connection will not be able to log into the system.

9 Cabling

For 10BASE-T and 100BASE-TX connections, the twisted-pair cable must have two pairs of wires. For 1000BASE-T connections, the twisted-pair cable must have four pairs of wires. Each wire pair is identified by two different colors. For example, one wire might be green and the other, green with white stripes. Also, an RJ-45 connector must be attached to both ends of the cable.

CAUTION: DO NOT plug a phone jack connector into any RJ-45 port. Use only twisted-pair cables with RJ-45 connectors that conform with FCC standards.

CAUTION: Each wire pair must be attached to the RJ-45 connectors in a specific orientation.

The figure below illustrates how the pins on the RJ-45 connector are numbered. Be sure to hold the connectors in the same orientation when attaching the wires to the pins.

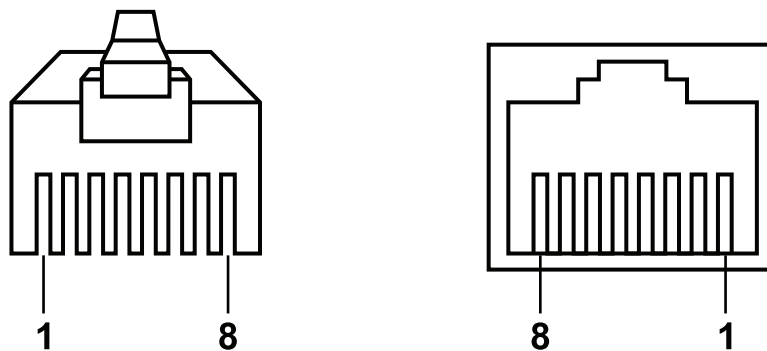


Figure 9-1. RJ-45 connector pin numbers.

10BASE-T/100BASE-TX Pin Assignments

Use unshielded twisted-pair (UTP) or shielded twisted-pair (STP) cable for RJ-45 connections: 100-ohm Category 3 or better cable for 10-Mbps connections, or 100-ohm Category 5 or better cable for 100-Mbps connections. Also be sure that the length of any twisted-pair connection does not exceed 100 meters (328 feet).

The RJ-45 ports on the switch base unit support automatic MDI/MDI-X operation, so you can use straight-through cables for all network connections to PCs or servers, or to other switches or hubs. In straight-through cable, Pins 1, 2, 3, and 6, at one end of the cable, are connected straight through to Pins 1, 2, 3, and 6 at the other end of the cable. When using any RJ-45 port on this switch, you can use either straight-through or crossover cable.

Table 9-1: 10BASE-T and 100BASE-TX MDI and MDI-X Port Pinouts

Pin	MDI Signal Name	MDI-X Signal Name
1	Transmit Data plus (TD+)	Receive Data plus (RD+)
2	Transmit Data minus (TD-)	Receive Data minus (RD-)
3	Receive Data plus (RD+)	Transmit Data plus (TD+)
6	Receive Data minus (RD-)	Transmit Data minus (TD-)
4, 5, 7, 8	Not used	Not used

NOTE: The "+" and "-" signs represent the polarity of the wires that make up each wire pair.

Straight-Through Wiring

If the twisted-pair cable is to join two ports and only one of the ports has an internal crossover (MDI-X), the two pairs of wires must be straight-through. (When auto-negotiation is enabled for any RJ-45 port on this switch, you can use either straight-through or crossover cable to connect to any device type.)

You must connect all four wire pairs as shown in the following diagram to support Gigabit Ethernet.

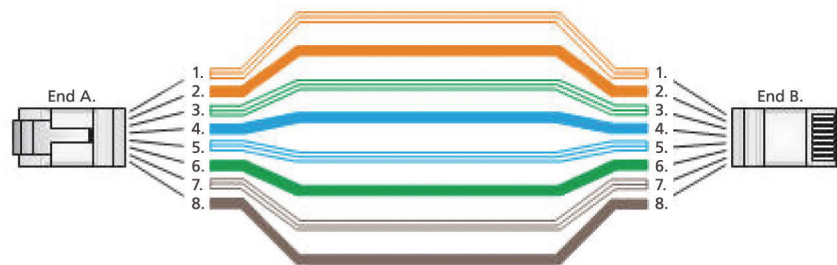


Figure 9-2. Straight-through wiring: EIA/TIA 586B RJ-45 wiring standard 10BASE-TX / 100BASE-T straight-through cable.

Crossover Wiring

If the twisted-pair cable is to join two ports and either both ports are labeled with an “X” (MDI-X) or neither port is labeled with an “X” (MDI), a crossover must be implemented in the wiring. (When autonegotiation is enabled for any RJ-45 port on this switch, you can use either straight-through or crossover cable to connect to any device type.)

You must connect all four wire pairs as shown in the following diagram to support Gigabit Ethernet.

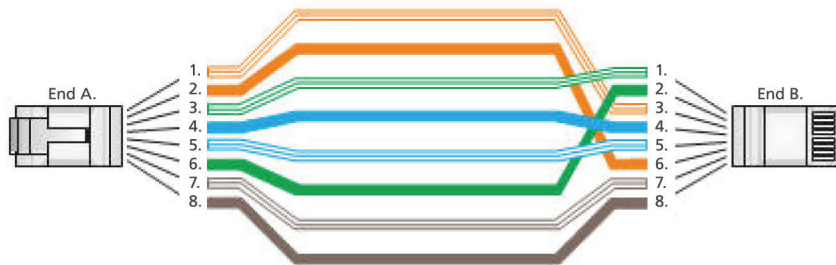


Figure 9-3. Crossover wiring: EIA/TIA 586B RJ-45 wiring standard 10BASE-TX / 100BASE-T crossover cable.

1000BASE-T Pin Assignments

All 1000BASE-T ports support automatic MDI/MDI-X operation, so you can use straight-through cables for all network connections to PCs or servers, or to other switches or hubs. The table below shows the 1000BASE-T MDI and MDI-X port pinouts. These ports require that all four pairs of wires be connected. Note that for 1000BASE-T operation, all four pairs of wires are used for both transmit and receive. Use 100-ohm Category 5, 5e or 6 unshielded twisted-pair (UTP) or shielded twisted-pair (STP) cable for 1000BASE-T connections. Also be sure that the length of any twisted-pair connection does not exceed 100 meters (328 feet).

Table 9-2: 1000BASE-T MDI and MDI-X Port Pinouts

Pin	MDI Signal Name	MDI-X Signal Name
1	Bidirectional Pair A Plus (BI_DA+)	Bidirectional Pair B Plus (BI_DB+)
2	Bidirectional Pair A Minus (BI_DA-)	Bidirectional Pair B Minus (BI_DB-)
3	Bidirectional Pair B Plus (BI_DB+)	Bidirectional Pair A Plus (BI_DA+)
4	Bidirectional Pair C Plus (BI_DC+)	Bidirectional Pair D Plus (BI_DD+)
5	Bidirectional Pair C Minus (BI_DC-)	Bidirectional Pair D Minus (BI_DD-)
6	Bidirectional Pair B Minus (BI_DB-)	Bidirectional Pair A Minus (BI_DA-)
7	Bidirectional Pair D Plus (BI_DD+)	Bidirectional Pair C Plus (BI_DC+)
8	Bidirectional Pair D Minus (BI_DD-)	Bidirectional Pair C Minus (BI_DC-)

Cable Testing for Existing Category 5 Cable

Installed Category 5 cabling must pass tests for Attenuation, Near-End Crosstalk (NEXT), and Far-End Crosstalk (FEXT). This cable testing information is specified in the ANSI/TIA/EIA-TSB-67 standard. Additionally, cables must also pass test parameters for Return Loss and Equal-Level Far-End Crosstalk (ELFEXT). These tests are specified in the ANSI/TIA/EIA-TSB-95 Bulletin, "The Additional Transmission Performance Guidelines for 100-Ohm 4-Pair Category 5 Cabling."

NOTE: When testing your cable installation, be sure to include all patch cables between switches and end devices.

Adjusting Existing Category 5 Cabling to Run 1000BASE-T

If your existing Category 5 installation does not meet one of the test parameters for 1000BASE-T, there are basically three measures that can be applied to try to correct the problem:

1. Replace any Category 5 patch cables with high-performance Category 5e or Category 6 cables.
2. Reduce the number of connectors used in the link.
3. Reconnect some of the connectors in the link.

Fiber Standards

The International Telecommunication Union (ITU-T) has standardized various fiber types for data networks. These are summarized in the following table:

Table 9-3: Fiber standards.

ITU-T Standard	Description	Application
G.651	Multimode fiber 50/125-micron core	Short-reach connections in the 1300- nm or 850-nm band.
G.652	Non-dispersion-shifted fiber single-mode, 9/125-micron core	Longer spans and extended reach. Optimized for operation in the 1310-nm band. but can also be used in the 1550-nm band.
G.652.C	Low water peak non-dispersion-shifted fiber single-mode, 9/125-micron core	Longer spans and extended reach. Optimized for wavelength-division multiplexing (WDM) transmission across wavelengths from 1285 to 1625 nm. The zero dispersion wavelength is in the 1310-nm region.
G.653	Dispersion-shifted fiber single-mode, 9/125-micron core	Longer spans and extended reach. Optimized for operation in the region from 1500 to 1600 nm.
G.654	1550-nm loss-minimized fiber single-mode, 9/125-micron core	Extended long-haul applications. Optimized for high-power transmission in the 1500- to 1600-nm region, with low loss in the 1550-nm band.
G.655	Non-zero dispersion-shifted fiber single-mode, 9/125-micron core	Extended long-haul applications. Optimized for high-power dense wavelength-division multiplexing (DWDM) operation in the region from 1500 to 1600-nm.

10 Glossary

10BASE-T: IEEE 802.3 specification for 10-Mbps Ethernet over two pairs of Category 3, 4, or 5 UTP cable.

100BASE-TX: IEEE 802.3u specification for 100-Mbps Ethernet over two pairs of Category 5 UTP cable.

1000BASE-LH: Specification for long-haul Gigabit Ethernet over two strands of 9-/125-micron core fiber cable.

1000BASE-LX: IEEE 802.3z specification for Gigabit Ethernet over two strands of 50-/125-, 62.5-/125-, or 9-/125-micron core fiber cable.

1000BASE-SX: IEEE 802.3z specification for Gigabit Ethernet over two strands of 50-/125- or 62.5-/125-micron core fiber cable.

1000BASE-T: IEEE 802.3ab specification for Gigabit Ethernet over 100-ohm Category 5, 5e or 6 twisted-pair cable (using all four wire pairs).

Autonegotiation: Signaling method allowing each node to select its optimum operational mode (e.g., speed and duplex mode) based on the capabilities of the node to which it is connected.

Bandwidth: The difference between the highest and lowest frequencies available for network signals. Also synonymous with wire speed, the actual speed of the data transmission along the cable.

Collision Domain: Single CSMA/CD LAN segment.

CSMA/CD: (Carrier Sense Multiple Access/Collision Detect) is the communication method employed by Ethernet, Fast Ethernet, and Gigabit Ethernet.

End Station: A workstation, server, or other device that does not forward traffic.

Ethernet: A network communication system developed and standardized by DEC, Intel®, and Xerox®, using baseband transmission, CSMA/CD access, logical bus topology, and coaxial cable. The successor IEEE 802.3 standard provides for integration into the OSI model and extends the physical layer and media with repeaters and implementations that operate on fiber, Thin coax, and twisted-pair cable.

Fast Ethernet: A 100-Mbps network communication system based on Ethernet and the CSMA/ CD access method.

Full-Duplex: Transmission method that allows two network devices to transmit and receive concurrently, effectively doubling the bandwidth of that link.

Gigabit Ethernet: A 1000-Mbps network communication system based on Ethernet and the CSMA/ CD access method.

IEEE: Institute of Electrical and Electronic Engineers.

IEEE 802.3: Defines carrier sense multiple access with collision detection (CSMA/CD) access method and physical layer specifications.

IEEE 802.3AB: Defines CSMA/CD access method and physical layer specifications for 1000BASE-T Gigabit Ethernet. (Now incorporated in IEEE 802.3-2005.)

IEEE 802.3U: Defines CSMA/CD access method and physical layer specifications for 100BASE- TX Fast Ethernet. (Now incorporated in IEEE 802.3-2005.)

IEEE 802.3X: Defines Ethernet frame start/stop requests and timers used for flow control on full-duplex links. (Now incorporated in IEEE 802.3-2005.)

IEEE 802.3Z: Defines CSMA/CD access method and physical layer specifications for 1000BASE Gigabit Ethernet. (Now incorporated in IEEE 802.3-2005.)

Lan Segment: Separate LAN or collision domain.

LED: Light-emitting diode used for monitoring a device or network condition.

Local Area Network (LAN): A group of interconnected computer and support devices.

Media Access Control (MAC): A portion of the networking protocol that governs access to the transmission medium, facilitating the exchange of data between network nodes.

MIB: An acronym for Management Information Base. It is a set of database objects that contains information about the device.

Modal Bandwidth: Bandwidth for multimode fiber is referred to as modal bandwidth because it varies with the modal field (or core diameter) of the fiber. Modal bandwidth is specified in units of MHz per km, which indicates the amount of bandwidth supported by the fiber for a one-kilometer distance.

Network Diameter: Wire distance between two end stations in the same collision domain.

RJ-45 Connector: A connector for twisted-pair wiring.

Switched Ports: Ports that are on separate collision domains or LAN segments.

TIA: Telecommunications Industry Association.

Transmission Control Protocol/Internet Protocol (TCP/IP): Protocol suite that includes TCP as the primary transport protocol, and IP as the network layer protocol.

User Datagram Protocol (UDP): UDP provides a datagram mode for the packet-switched communications. It uses the IP as the underlying transport mechanism to provide access to IP-like services. UDP packets are delivered just like IP packets – connection-less data grams that may be discarded before reaching their targets. UDP is useful when TCP would be too complex, too slow, or unnecessary.

UTP: Unshielded twisted-pair cable.

Virtual LAN (VLAN): A Virtual LAN is a collection of network nodes that share the same collision domain regardless of their physical location or connection point in the network. A VLAN serves as a logical workgroup with no physical barriers, allowing users to share information and resources as though located on the same LAN.

Black Box Tech Support: FREE! Live. 24/7.

Tech support the
way it should be.



Great tech support is just 60 seconds away at 724-746-5500 or blackbox.com.



About Black Box

Black Box provides an extensive range of networking and infrastructure products. You'll find everything from cabinets and racks and power and surge protection products to media converters and Ethernet switches all supported by free, live 24/7 Tech support available in 60 seconds or less.

© Copyright 2015. Black Box Corporation. All rights reserved.