



The new printing paradigm

HP PageWide Enterprise Color MFP 780, 785 series



Affordable color printing
for every office



Minimal interruptions.
Maximum uptime.



The world's most
secure printing¹

Affordable color printing for every office



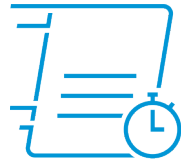
Color printing is within every business' budget with HP PageWide Technology. Produce low-cost, professional-quality color on sizes up to 12 x 18 inches (305 x 457 mm) and get the results you expect from HP for an exceptional value you can rely on.



Breakthrough low-cost color

Get the quality you expect for a game-changing value—HP PageWide Technology delivers a low cost per color page.

Original HP PageWide cartridges provide the consistent printing performance, quality, and affordability businesses demand. Optional high-yield cartridges offer an even better value, so you can print more pages and replace cartridges less often.³ Quickly access and replace cartridges—simply push twice to insert or remove.



Fast performance, economical prints

Equip employees to speed through tasks with high-performance, professional-quality printing. Print even faster—and save even more per page—by setting your MFP to General Office mode.⁴ Get the quality your business needs while helping to reduce printing costs.

Minimize interruptions in productivity with an HP PageWide Enterprise MFP designed with the fewest parts in its class for the least maintenance.⁵



Best-in-class energy efficiency²

Help keep energy costs down with the most efficient MFP in its class.² HP PageWide Technology conserves resources without compromising performance.

This MFP meets rigorous standards for ISO class 5 cleanrooms—perfect for sensitive environments. Keep noise to a minimum with a device designed to be quiet. Place it near people without disrupting work.

Help reduce your environmental impact. Consume up to 50% less paper, with automatic two-sided printing. Easily recycle your Original HP cartridges at no charge through HP Planet Partners.⁶

Minimal interruptions. Maximum uptime.

Annoying interruptions and complex maintenance can slow down printing and, ultimately, the pace of business. Avoid pauses in productivity with an HP PageWide device designed for maximum uptime—so you can count on reliable results day in and day out.

Move business forward

Print up to 50% faster than the competition⁷—as fast as 75 pages per minute (ppm) (Flow MFP 785 models).⁸ These devices wake up and print fast, so your documents are ready quickly.

Accelerate workflow with single-pass, two-sided scanning up to 120 images per minute (ipm), simplex, and up to 240 ipm, duplex (Flow MFP 785 models).⁹



HP makes mobile printing easy with a variety of options that help users print and help IT keep the network safe. Detect nearby printers from a mobile device and quickly connect to print with Bluetooth® Low Energy.¹⁰ Easily access, print, and share resources with Ethernet and Wi-Fi Direct®.¹¹

Launch tasks at the device

Preview and edit scans, adjust images, and launch print, scan, copy, and fax jobs¹²—all at the 9.0-inch (22.8 cm) functional touchscreen with 8.0-inch (20.3 cm) Color Graphics Display. For more information, see Appendix A on page 16.

For easy-access USB printing, use the USB port near the control panel.¹³



Turn paper files into digital assets and send your work to more places without using a PC. Scan documents directly to Microsoft® Office 365 and SharePoint®, plus email, USB, and network folders.¹⁴

Expand your capacity

Tailor this MFP to the needs of your business with a wide range of paper-handling accessories. Optional trays support media sizes up to 12 x 18 inches (305 x 457 mm), including a 550-sheet paper tray, 550-sheet paper tray and stand, and 3x550-sheet paper tray and stand.¹⁵

Print up to 4,650 pages without reloading paper, using the optional 4,000-sheet high-capacity input (HCI) tray and stand, with support for letter (A4) size.¹⁵



Organize, staple, collate, and hole-punch documents with advanced external finishing that helps you ramp up production. Count on robust performance with a maximum output capacity of up to 3,250 sheets, four hole-punch options, and the ability to staple up to 50 pages in professionally attached sets (Flow MFP 785z+ model only).¹⁶

The world's most secure printing¹



Only HP Enterprise printers repair themselves from attacks in real time, with built-in security to help keep your network safe. Automatically monitor threats, detect intrusions, and validate operating software with security offered only by HP.¹



Always on guard

Only HP Enterprise printers offer built-in security features that are always on guard.¹

- With HP Sure Start, each device regularly checks its operating code and repairs itself from attempted hacks.
- Whitelisting checks firmware during startup to help ensure it's authentic, good code—digitally signed by HP.
- Run-time intrusion detection continually monitors activity to detect and stop attacks, then automatically reboots.
- HP Connection Inspector checks your MFP's outgoing network connections to stop suspicious requests and thwart malware.

Thwart potential attacks by receiving instant notification of security issues, so immediate action can be taken. This MFP works with tools like Splunk, ArcSight, McAfee, and SIEMonster.

▶ For more information

Fleet management

HP Web Jetadmin visit: hp.com/go/wja

Solution brief: <http://h20195.www2.hp.com/V2/GetPDF.aspx/4AA5-2718ENW.pdf>

Video: <http://hp.brightcovegallery.com/solutions/detail/video/4271055504001/>

HP Universal Print Driver visit: hp.com/go/upd

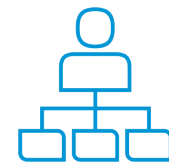
Solution brief: <http://h20195.www2.hp.com/V2/GetPDF.aspx/4AA2-4781ENW.pdf>



Take security to the next level

Help protect this MFP with more than 250 embedded security features.¹⁷ Protect information in transit over the network and stored on the device—keys, passwords, certificates, and more. Store data on the 256-bit encrypted HP High-Performance Secure Hard Disk.

Easily develop, deploy, and integrate HP and third-party solutions with HP Open Extensibility Platform (OXP). Add features such as card readers and more through the Hardware Integration Pocket (HIP).¹⁸ Further safeguard data stored on the device, using the standard HP Trusted Platform Module.¹⁹



Centralize control to help build business efficiency

Centralize control of your printing environment with HP Web Jetadmin—and help build business efficiency.²⁰ Optional HP JetAdvantage Security Manager offers an effective, policy-based approach to help secure HP printing and imaging devices.²¹

HP JetAdvantage Secure Print²² and HP Access Control (HPAC) help secure documents by requiring authentication to release print jobs. In addition, extend capabilities and easily customize with HPAC—integrate job accounting, manage rights, and establish quotas for things such as color use.²³ Save IT time and make printing easy for the entire enterprise by using a single driver for all HP devices.²⁴

Security

HP JetAdvantage Security Solutions visit: hp.com/go/printsecurity

Solution overview: <http://h20195.www2.hp.com/V2/GetPDF.aspx/4AA3-1295ENW.pdf>

Video: <http://hp.brightcovegallery.com/products/detail/video/4270905124001/>

HP JetAdvantage Security Manager visit: hp.com/go/securitymanager

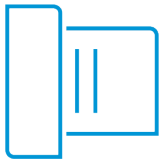
Brochure: <http://h20195.www2.hp.com/V2/GetPDF.aspx/4AA3-9275ENW.pdf>

Video: <http://hp.brightcovegallery.com/products/detail/video/4270837770001/>

Give workgroups the speed they need



Accelerate workflow, improve accuracy, and easily connect people throughout your organization. Complete high-volume scan jobs super-fast—up to 240 ipm for Flow models⁹—and avoid extra steps with an MFP designed for maximum productivity.



Easily scan and edit text

Capture text from documents with high accuracy. Easily scan documents, edit text, and save as a Microsoft Word or searchable PDF file with HP Scan and I.R.I.S. Readiris™ Pro OCR Software.



Fast scanning and input

Turn stacks of paper documents into digital files. Load up to 200 pages into the automatic document feeder (ADF) for fast, unattended scanning.^{25,26}

Enter data more quickly and accurately using the pull-out keyboard, one of the features available on all Flow models.²⁷



Every page, every time

Capture every page easily—with confidence. HP EveryPage gives employees smooth paper-handling capabilities to detect potential errors or missed pages on the spot—for scan jobs of all kinds.

Help ensure every scanned document is properly oriented, cropped to size, and grayscale-optimized.

Flow MFP features²⁷



HP EveryPage featuring ultrasonic multi-feed detection



Faster scan speeds



Automatic page orientation, auto-crop, and auto-tone



Pull-out keyboard²⁷



Built-in OCR



Extended-life ADF

Get to know the HP PageWide Enterprise Color MFP 780 series

HP PageWide Enterprise Color MFP 780dns shown



Series at a glance



	MFP 780dn	MFP 780dns	Flow MFP 785f	Flow MFP 785zs	Flow MFP 785z+
Part number	J7Z09A	J7Z10A	J7Z11A	J7Z12A	Z5G75A
Print speeds, black and color, letter and A4 ⁸	Up to 45/65 ppm, Professional/General Office mode	Up to 45/65 ppm, Professional/General Office mode	Up to 55/75 ppm, Professional/General Office mode	Up to 55/75 ppm, Professional/General Office mode	Up to 55/75 ppm, Professional/General Office mode
Fax capabilities	Optional	Optional	✓	✓	✓
Advanced workflow features including pull-out keyboard, OCR, HP EveryPage, and auto-orientation ²⁷	Not available	Not available	✓	✓	✓
Wireless networking ²⁸	Optional wireless direct ²⁹	Optional wireless direct ²⁹	Optional wireless direct ²⁹	Built-in Wi-Fi Direct ¹¹	Built-in Wi-Fi Direct ¹¹
Bluetooth Low Energy ¹⁰	Not available	Not available	Not available	✓	✓
350-sheet inner finisher with stapler ³⁰	Not available	✓	Not available	✓	Not available
3,250-sheet external finisher with stapler ¹⁶	Not available	Not available	Not available	Not available	✓ (Required)
Paper-handling	For information on optional, standard, and required paper-handling capabilities for each model, please see page 9.				

Get to know the HP PageWide Enterprise Color Flow MFP 785 series

HP PageWide Enterprise Color Flow MFP 785z+ shown

9.0-inch (22.8 cm) functional touchscreen with 8.0-inch (20.3 cm) Color Graphics Display

Hardware Integration Pocket¹⁸

Easy-access USB printing port¹³

Front door access to cartridges

100-sheet multipurpose tray 1 supports media up to 12 x 18 inches (305 x 457 mm)

550-sheet tray 2 supports media up to 11.7 x 17 inches (297 x 432 mm)

Optional 3x550-sheet paper tray and stand supports media up to 11.7 x 17 inches (297 x 432 mm); one tray/stand accessory is required for the 785z+ model



200-sheet ADF with single-pass, two-sided scanning with HP EveryPage²⁷

11.7 x 17 inches (297 x 432 mm) flatbed scanner

Upper bin of external finisher supports up to 250 sheets

Lower bin of external finisher supports up to 3,000 sheets; staple, collate, and optional hole punch¹⁶

Pull-out keyboard²⁷

Automatic two-sided printing

Wi-Fi direct printing¹¹/Bluetooth Low Energy¹⁰

Host USB port, Ethernet network port, Hi-Speed USB 2.0 printing port

Paper-handling capabilities

The HP PageWide Enterprise Color MFP 780 and 785 series models come standard with a 100-sheet multipurpose tray that supports media up to 12 x 18 inches (305 x 457 mm) and one 550-sheet tray that supports media up to 11.7 x 17 inches (297 x 432 mm). Other input and finisher accessories are described in the table below.

The Flow MFP 785zs comes standard with the 3x550-sheet paper tray and stand. It does not support any other input accessory.

The Flow MFP 785z+ is required to add one of the following tray/stand accessories: 550-sheet paper tray and stand, 3x550-sheet paper tray and stand, or 4,000-sheet HCI paper tray and stand. Only one tray/stand accessory can be used. It does not support the optional 550-sheet paper tray without stand.

Other optional accessories, such as hole punch accessories, are included in the Ordering information on page 15.



550-sheet Paper Tray (A7W99A)	550-sheet Paper Tray and Stand (W1B50A)	3x550-sheet Paper Tray and Stand (W1B51A)	4,000-sheet HCI Paper Tray and Stand (W1B52A)	350-sheet inner finisher with stapler	3,250-sheet external finisher with stapler (Z4L04A) ¹⁶
Supports up to 11.7 x 17 inches (297 x 432 mm)	Supports up to 11.7 x 17 inches (297 x 432 mm)	Supports up to 11.7 x 17 inches (297 x 432 mm)	Two 2,000-sheet trays that support letter (A4)	Staples up to 50 sheets per set	Staples up to 50 sheets per set
Required: Flow 785z+ model must add one tray/stand accessory				Standard: 780dns, Flow 785zs	Required: Flow 785z+
Not available: Flow 785zs, Flow 785z+	Not available: Flow 785zs	Standard: Flow 785zs	Not available: Flow 785zs	Not available: 780dn, 780dn, Flow 785f, Flow 785z+	Not available: 780dn, 780dns, Flow 785f, Flow 785zs
Optional: Add up to one: 780dn, 780dns, Flow 785f	Optional: Add up to one: 780dn, 780dns, Flow 785f	Optional: Add up to one: 780dn, 780dns, Flow 785f	Optional: Add up to one: 780dn, 780dns, Flow 785f		
Maximum device input with accessory: ³¹ 1,200 sheets	1,200 sheets	2,300 sheets	4,650 sheets	Maximum output with finisher: 850 sheets	3,250 sheets

Note: Only one input accessory can be added at a time.

What's new



**HP PageWide Enterprise
Color Flow MFP 785z+**

Supports paper sizes **up to 12 x 18 in** (305 x 457 mm)

Up to 4,650 sheets input;³¹ **up to 3,250 sheets output, with required external finisher**

Single-pass, two-sided ADF scanning up to 120 ipm, simplex, **up to 240 ipm, duplex;**⁹ **up to 200 sheets input** capacity; maximum scan size: 11.7 x 39 in (297 x 1000 mm)²⁵

3,250-sheet external finisher with stapler¹⁶

Detect nearby printers from a mobile device, quickly connect, and easily print with **Bluetooth Low Energy** connectivity¹⁰

RMPV:³² 2,500 pages to **as high as 25,000 pages**
RMSV:²⁶ 2,000 pages to **as high as 75,000 pages**

Standard HP Trusted Platform Module (TPM)¹⁹

HP Connection Inspector checks outgoing network connections



**HP PageWide Enterprise
Color Flow MFP 586z**

Supports paper sizes up to 8.5 x 14 inches (216 x 356 mm)

Up to 2,050 sheets input;³¹ up to 300 sheets output

Single-pass, two-sided ADF scanning up to 47 ppm, simplex, up to 74 ipm, duplex;⁹ up to 100 sheets input capacity; maximum scan size: 8.5 x 14 in (216 x 356 mm)

Not available

Bluetooth Low Energy not available

RMPV: 2,000 pages to as high as 7,500 pages
RMSV: 8,350 pages to as high as 13,900 pages

Optional TPM

Available with a firmware update

Technical specifications

	HP PageWide Enterprise Color MFP 780dn	HP PageWide Enterprise Color MFP 780dns	HP PageWide Enterprise Color Flow MFP 785f	HP PageWide Enterprise Color Flow MFP 785zs	HP PageWide Enterprise Color Flow MFP 785z+
Product number	J7Z09A	J7Z10A	J7Z11A	J7Z12A	Z5G75A
Control panel/data entry	9.0-inch (22.8 cm) functional touchscreen with 8.0-inch (20.3 cm) Color Graphics Display; easy-access USB port; ¹³ Hardware Integration Pocket ¹⁸				
	Plus: pull-out keyboard				
Print speed (letter and A4, black and color)⁸					
Single-sided	Up to 45/65 ppm, Professional/General Office mode		Up to 55/75 ppm, Professional/General Office mode		
Two-sided	Up to 31/45 ipm, Professional mode/General Office mode		Up to 38/52 ipm, Professional mode/General Office mode		
First page out (letter and A4, black and color)	From ready: ³³ as fast as 7.0 seconds (<i>all models</i>) From sleep: ³⁴ as fast as 17.5 seconds (<i>all models</i>)				
Print resolution	Black: Up to 1200 x 1200 optimized dpi from 600 x 600 input dpi (on Unspecified, Plain, HP Premium Presentation Matte, and HP Brochure Matte); Color: Up to 2400 x 1200 optimized dpi from 600 x 600 input dpi (on HP Advanced Photo Papers)				
Scanning resolution	Up to 600 dpi (<i>all models</i>)				
ADF scan speed (letter and A4)⁹					
Single-sided	Up to 90 ipm (black and color)		Up to 120 ipm (black and color)		
Two-sided	Up to 180 ipm (black and color)		Up to 240 ipm (black and color)		
Features					
Printing	HP PageWide Technology with pigmented inks, HP EasyColor, print preview, automatic two-sided printing, print multiple pages per sheet (2, 4, 6, 9, 16), collation, booklet printing, cover pages, tray selection, scaling, portrait/landscape orientation, high-quality grayscale and black ink only, General Office/Professional/Presentation dpi print modes, control panel shortcuts, store print jobs; print from easy-access USB Microsoft Word and PowerPoint files				
Scanning	Flatbed scanner: 11.7 x 17 in (297 x 432 mm); 200-sheet ADF with single-pass, two-sided scanning up to 11.7 x 39 in (297 x 1000 mm); ²⁵ Advanced features: optimize text/picture, image adjustments, job build, output quality setting, selectable scan resolution 75 to 600 dpi, auto detect color, edge erase, job notification, blank page suppression, Quick Sets; bit depth: 24-bit (color); 8-bit (gray); Scan file type supported by software: Bitmap (.bmp), JPEG (.jpg), PDF (.pdf), PNG (.png), Rich Text (.rtf), Searchable PDF (.pdf), Text (.txt), TIFF (.tif); TWAIN version 2.1 ³⁵				
	Plus: HP EveryPage with ultrasonic multi-feed detection, embedded optical character recognition (OCR), auto-orientation, auto-crop-to-page, auto-tone				
Digital sending	Scan to email with LDAP email address lookup, scan to network folder, scan to USB, send to FTP, send to Internet fax, SMTP over SSL, blank page removal, edge erase, auto color sense, auto crop to content, compact PDF, scan to Microsoft SharePoint ³⁶				
	Plus: send to LAN fax; OCR, auto-tone, auto-orientation, multi-pick detect, auto-straighten, auto-crop-to-page				
File formats ³⁵	Digital send: PDF, JPEG, TIFF, MTIFF, XPS, PDF/A; Scan to easy-access USB: PDF, JPEG, TIFF, MTIFF, XPS, PDF/A; Print from easy-access USB: ¹³ PDF, PS, print ready files (.prn, .pcl, .cht)				
	Plus (OCR): TEXT, Unicode TEXT, RTF, Searchable PDF, Searchable PDF/A, HTML, CSV; Scan to easy-access USB: TEXT, Unicode TEXT, RTF, Searchable PDF, Searchable PDF/A, HTML, CSV				
Copying (letter and A4, black and color) ³⁷	Auto scale, reduce/enlarge from scanner glass (25 to 400%), collate, auto-color detection, two-sided copying, job build, image adjustments (darkness, background clean-up, sharpness); Copy resolution: Up to 600 x 600 dpi				
	Copy speed: up to 45 copies per minute (cpm) First copy out: as fast as 9.4 seconds		Copy speed: up to 55 cpm First copy out: as fast as 9.4 seconds		
Faxing	Fax speed: ³⁸ 3 seconds per page/33.6 kbps (letter/A4); fax forwarding, receive fax polling, broadcasting to up to 210 locations, speed dial up to 1000 numbers, each with 210 destinations, auto-fax reduction, auto-redialing, stored faxes, fax archiving, scale-to-fit, fax address book, LAN/Internet fax, fax number confirmation, holiday fax schedule Fax resolution: Black (standard): 204 x 98 dpi, black (fine): 204 x 196 dpi, black (photo grayscale): 300 x 300 dpi (400 x 400 dpi for received faxes only); Color: 300 x 300 dpi (400 x 400 dpi for received faxes only)				
Processor	1.2 GHz (<i>all models</i>)				
Memory	3584 MB (standard/max) ³⁹		5632 MB (standard/max) ⁴⁰		

	HP PageWide Enterprise Color MFP 780dn	HP PageWide Enterprise Color MFP 780dns	HP PageWide Enterprise Color Flow MFP 785f	HP PageWide Enterprise Color Flow MFP 785zs	HP PageWide Enterprise Color Flow MFP 785z+
Storage	High-Performance Secure Hard Disk (AES 256 hardware encryption or greater; Secure erase capabilities: Secure File Erase-Temporary Job Files, Secure Erase-Job Data, Secure ATA Erase-Disk)				
Durability ratings					
RMPV ³²	2,500 pages to as high as 20,000 pages		2,500 pages to as high as 25,000 pages		
RMSV ²⁶	2,000 pages to as high as 50,000 pages		2,000 pages to as high as 75,000 pages		
Duty cycle ⁴¹	Up to 100,000 pages		Up to 125,000 pages		
Media specifications					
Input capacity	Up to 650 sheets (up to 4,650 sheets maximum ³¹) Tray 1: up to 100 sheets Tray 2: up to 550 sheets	Up to 650 sheets (up to 4,650 sheets maximum ³¹) Tray 1: up to 100 sheets Tray 2: up to 550 sheets	Up to 650 sheets (up to 4,650 sheets maximum ³¹) Tray 1: up to 100 sheets Tray 2: up to 550 sheets	Up to 2,300 sheets (up to 4,650 sheets maximum ³¹) Tray 1: up to 100 sheets Tray 2: up to 550 sheets 3x550-sheet feeder and stand	Up to 650 sheets (up to 4,650 sheets maximum ³¹) Tray 1: up to 100 sheets Tray 2: up to 550 sheets
Output capacity	Up to 500 sheets	Up to 850 sheets; including 350-sheet inner finisher with stapler	Up to 500 sheets	Up to 850 sheets; including 350-sheet inner finisher with stapler	Up to 3,250 sheets; including external finisher with stapler ¹⁶
Two-sided printing	Automatic (<i>all models</i>)				
Media sizes	Tray 1: 12 x 18 in, 11 x 17 in, legal, oficio, letter, letter-R, executive, executive-R, 5 x 8 in, 5 x 7 in, 4 x 6 in; RA3, A3, 8K, B4 (JIS), SRA4, RA4, A4, A4-R, 16K, 16K-R, A5, A5-R, B5 (JIS), B5 (JIS)-R, B6 (JIS), A6, Japanese Postcard, Double Japanese Postcard-R; Custom media sizes: 3.9 x 5.83 to 12 x 18 in (99.1 x 127 to 305 x 457 mm) Trays 2-5: 11 x 17 in, legal, oficio, letter, letter-R, executive, executive-R, 5 x 8 in, 5 x 7 in, 4 x 6 in; A3, 8K, B4 (JIS), SRA4, RA4, A4, A4-R, 16K, 16K-R, A5, A5-R, B5 (JIS), B5 (JIS)-R, B6 (JIS), A6, Japanese Postcard, Double Japanese Postcard-R; Custom media sizes: 8.27 x 5.83 to 11.70 x 17 in (210.1 x 148.1 to 297.2 x 431.8 mm) HCI Trays 3 and 4: Letter and A4 only Duplex: 12 x 18 in, 11 x 17 in, legal, oficio (8.5 x 13 in), letter, letter-R, executive, executive-R; 10 x 15 cm, RA3, A3, A4, 8K (260 x 368 mm), 8K (270 x 390 mm), 8K (273 x 394 mm), B4, SRA4, RA4, 16K (184 x 260 mm), 16K (195 x 270 mm), 16K (197 x 273 mm), A5, A5-R, B5 (JIS), B5 (JIS)-R, B6 (JIS), A6, Postcard (JIS), DPostcard (JIS), oficio (216 x 340 mm) ADF: 11.7 x 39 in, legal, 8.5 x 13 in, letter; A3, ledger, B4-JIS, A4, B5-JIS, A5, B6-JIS, A6				
Media weights	Tray 1: 16 to 58 lb (60 to 220 g/m ²), 80 lb (300 g/m ²) photo paper only Trays 2-5, HCI: 16 to 58 lb (60 to 220 g/m ²) ADF: 12 to 53 lb (45 to 199 g/m ²)				
Media types	Paper (plain, inkjet, inkjet brochure/glossy), photo paper, envelopes, labels, cards				
Print languages	HP PCL 6, HP PCL 5c, HP postscript level 3 emulation, PDF 1.7				
Fonts	105 internal TrueType fonts scalable in HP PCL, 92 internal scalable fonts in HP Postscript level 3 emulation (Euro symbol built-in); 1 internal Unicode font (Andale Mono WorldType); 2 Internal Windows Vista® 8 fonts (Calibri, Cambria); additional font solutions available via third-party flash memory cards; HP LaserJet fonts and IPDS Emulation available at hp.com/go/laserjetfonts				
Connectivity	2 Hi-Speed USB 2.0 Host; 1 Hi-Speed USB 2.0 Device; 1 Gigabit Ethernet 10/100/1000T network; 1 RJ-11 modem port/phone line; 1 Hardware Integration Pocket ¹⁸				
	Plus: Fax				
Mobile printing	HP ePrint, ⁴² Apple® AirPrint®, ⁴³ Mopria-certified, Google Cloud Print™ 2.0 (<i>all models</i>)				
	Optional: Wireless direct printing ¹¹ and NFC touch-to-print ⁴⁴ (with purchase of HP Jetdirect 3000w NFC/Wireless Accessory)			Plus: Wi-Fi Direct ¹¹ and Bluetooth Low Energy ¹⁰	
Network capabilities	Standard: via HP Jetdirect Ethernet embedded print server supports: 10Base-T, 100Base-Tx, 1000Base-T; 802.3az (EEE) support on Fast Ethernet and Gigabit Ethernet; IPsec				
	Optional: 802.11a/b/g/n wireless networking (with purchase of optional HP Jetdirect 2900nw Print Server) ²⁹			Plus: 802.11b/g/n wireless networking ¹¹	
Network protocols	IPv4/IPv6: Apple Bonjour Compatible (Mac OS v10.2.4 or higher), SNMPv1/v2c/v3, HTTP, HTTPS, FTP, TFTP, Port 9100, LPD, WS Discovery, IPP, Secure-IPP, IPsec/Firewall; IPv6: DHCPv6, MLDv1, ICMPv6; IPv4: Auto-IP, SLP, Telnet, IGMPv2, BOOTP/DHCP, WINS, IP Direct Mode, WS Print				

	HP PageWide Enterprise Color MFP 780dn	HP PageWide Enterprise Color MFP 780dns	HP PageWide Enterprise Color Flow MFP 785f	HP PageWide Enterprise Color Flow MFP 785zs	HP PageWide Enterprise Color Flow MFP 785z+
Security	<p>Identity Management: Kerberos authentication, LDAP authentication, 1000 user PIN codes, optional HP and third-party advanced authentication solutions (e.g., badge readers)</p> <p>Network: IPsec/firewall with Certificate, Pre-Shared Key, and Kerberos authentication, Supports WJA-10 IPsec configuration Plug in, 802.1X authentication (EAP-PEAP, EAP-TLS), SNMPv3, HTTPS, Certificates, Access Control List, HP Trusted Platform Module (TPM) comes standard</p> <p>Data: Storage Encryption, Encrypted PDF & Email (uses FIPS 140 validated cryptographic libraries from Microsoft), Secure Erase, SSL/TLS (HTTPS), Encrypted Credentials</p> <p>Device: Security lock slot, USB port disablement, Hardware Integration Pocket for security solutions,¹⁸ Intrusion Detection with Red Balloon Security Technology (constant in-device monitoring for attacks), HP Sure Start Secure Boot (BIOS integrity checking with self-healing capability), Whitelisting (loads only known good code (DLLs, EXEs, etc.)), HP Connection Inspector (checks outgoing network connections to stop suspicious requests; may require a firmware update)</p> <p>Security Management: Compatible with HP JetAdvantage Security Manager,²¹ Device Security Syslog Messages processed and accessible in ArcSight, Splunk, McAfee, and SIEMonster SIEMs</p> <p>For more security settings go to http://h10032.www1.hp.com/ctg/Manual/c03602120</p>				
Printer management	HP JetAdvantage Security Manager; ²¹ HP SNMP Proxy Agent; HP Web Jetadmin Software; ²⁰ HP WS Pro Proxy Agent; Printer Administrator Resource Kit for HP Universal Print Driver ²⁴				
Compatible operating systems⁴⁵	<p>Windows® OS: Windows 10 all 32- and 64-bit editions (excluding RT OS for Tablets), Windows 7 all 32- and 64-bit editions, Windows 8/8.1 all 32- and 64-bit editions (excluding RT OS for Tablets), Windows Vista all 32-bit editions (Home Basic, Premium, Professional, etc.), Windows XP SP3 32-bit editions (XP Home, XP Pro, etc.)</p> <p>Mac OS: 10.12 Sierra, OS X 10.10 Yosemite, OS X 10.11 El Capitan</p> <p>Mobile OS: Android™</p> <p>Linux® Boss (5.0), Linux Debian (7.0, 7.1, 7.2, 7.3, 7.4, 7.5, 7.6, 7.7, 7.8, 7.9, 8.0, 8.1, 8.2, 8.3, 8.4, 8.5, 8.6), Linux Fedora (22, 23, 24), Linux Mint (17, 17.1, 17.2, 17.3, 18), Linux Red Hat Enterprise (6.0, 7.0), Linux SUSE (13.2, 42.1), Linux Ubuntu (12.04, 14.04, 15.10, 16.04, 16.10)</p> <p>Other OS: UNIX®</p>				
Compatible network operating systems	<p>Citrix® MetaFrame Presentation Server 3.0, Citrix MetaFrame XP Presentation Server (Feature Release 1, 2, and 3), Citrix on Windows Server® 2003/2003R2, Citrix on Windows Server 2008/2008R2/2008 R2 SP1, Citrix on Windows Server 2012/2012R2, Citrix Presentation Server 4.0/4.5, Citrix XenApp 5.0 (plus Feature Pack 2 & 3) for Windows Server 2008 Terminal Services 32- and 64-bit, Citrix XenApp 6.0/6.5 (for Windows Server 2008 R2 Terminal Services, 32- and 64-bit), Citrix XenApp 6.0/6.5/7.5 (for Windows Server 2008 R2 SP1 Terminal Services, 32- and 64-bit), Citrix XenApp 7.5 (for Windows Server 2012 and 2012 R2 Terminal Services, 64-bit), Citrix XenDesktop® 5.6 (for Windows Server 2008 R2 Terminal Services, 32- and 64-bit), Citrix XenDesktop 5.6/7.0/7.5 (for Windows Server 2008 R2 SP1 Terminal Services, 32- and 64-bit), Citrix XenDesktop 7.0/7.5 (for Windows Server 2012 and 2012 R2 Terminal Services, 64-bit)</p> <p>Novell NetWare 6.5/SP8 Novell Clients novell.com/iprint, Novell iPrint Appliance v1.0, Novell Open Enterprise Server 11/SP1, Novell Open Enterprise Server 2 for Linux, Novell Servers novell.com/iprint</p> <p>Windows Server 2003/2003 R2 32-/64-bit (SP1/SP2) Standard/Enterprise/Datacenter (+ Cluster & Terminal Services), Windows Server 2003/2003 R2 32-bit (SP1/SP2), Standard/Enterprise (+ Cluster & Terminal Services), Windows Server 2008 32-/64-bit (SP2) Standard/Enterprise (+ Cluster & Terminal Services), Windows Server 2008 R2 64-bit (SP1) Standard/Enterprise (+ Cluster & Terminal Services), Windows Server 2008/2008 R2 32-/64-bit (SP1/SP2) Standard/Enterprise/Datacenter (+ Cluster & Terminal Services), Windows Server 2012/2012 R2 64-bit Standard/Foundation/Essentials/Datacenter (+ Cluster & Terminal Services), Windows Server 2016/ 64-bit Standard/Essential/Datacenter (+ Cluster & Terminal Services)</p>				
System requirements, Windows	A compatible operating system (see above); Internet; 2 GB available hard disk space; OS hardware requirements (see microsoft.com)				
System requirements, Macintosh	A compatible operating system (see above); Internet; 1.3 GB available hard disk space; OS hardware requirements (see apple.com)				
Dimensions (width x depth x height)	Operating: 32 x 23.25 x 18 in (813 x 591 x 458 mm) Maximum: ⁴⁶ 35.25 x 23.25 x 21 in (896 x 591 x 534 mm)	Operating: 32 x 24.25 x 31.125 in (813 x 616 x 791 mm) Maximum: ⁴⁶ 35.25 x 28.25 x 31.125 in (896 x 718 x 791 mm)	Operating: 23.8 x 25.7 x 26.9 in (604 x 652 x 682 mm) Maximum: ⁴⁶ 60.2 x 40.4 x 39.2 in (1530 x 1027 x 995 mm)	Operating: 23.8 x 25.7 x 48.1 in (604 x 652 x 1222 mm) Maximum: ⁴⁶ 60.2 x 40.4 x 60.4 in (1530 x 1027 x 1535 mm)	Operating: 49 x 27.3 x 48.1 in (1245 x 693 x 1222 mm) Maximum: ⁴⁶ 98.2 x 46.3 x 60.4 in (2495 x 1175 x 1535 mm)
Weight (with print cartridges)	153 lb (69 kg)	181 lb (82 kg)	152 lb (69.1 kg)	263.9 lb (119.7 kg)	376.3 lb (171 kg)
What's in the box	HP PageWide Enterprise Color Multifunction Printer; HP Setup Black PageWide Cartridge (~10,000 pages); ⁴⁷ HP Setup Cyan PageWide Cartridge, HP Setup Magenta PageWide Cartridge, HP Setup Yellow PageWide Cartridge (CMY composite ~8,000 pages); ⁴⁷ Installation guide; Support flyer; documentation on CD-ROM; Power cord				
Warranty	One-year, next-business day, onsite warranty; Warranty and support options vary by product, country, and local legal requirements. Go to hp.com/support to learn about HP world-class service and support options in your region.				
Software included³⁵	HP Connected, HP Device Experience (DXP), HP PCL 6 (XPS) Printer Driver, HP Software Installer/Uninstaller, Mac OS Welcome Screen (directs users to 123.hp.com or OS App Source for printer software), online user manuals				
HP SureSupply supported	HP SureSupply alerts you when your print cartridge is running low and helps you purchase online or locally through HP or a participating retailer. Only available with Original HP supplies; Internet access required. To learn more, visit hp.com/go/SureSupply .				

Environmental and power specifications

	HP Pagewide Enterprise Color MFP 780dn	HP Pagewide Enterprise Color MFP 780dns	HP Pagewide Enterprise Color Flow MFP 785f	HP Pagewide Enterprise Color Flow MFP 785zs	HP Pagewide Enterprise Color Flow MFP 785z+
Environmental ranges					
Temperatures	Recommended operating: 63 to 77° F (17 to 25° C); Operating: 59 to 86° F (15 to 30° C); Storage before initial setup (Non-Purged): -40 to 140° F (-40 to 60° C); Storage after initial setup (Purged): 32 to 140° F (0 to 60° C) ⁴⁸				
Relative Humidity	Recommended operating range: 30 to 70% RH; Operating range: 10 to 80% RH; Non-operating range: 10 to 80% RH				
Acoustic pressure emissions⁴⁹	Ready mode: inaudible; Active print: 53 dB(A); Active scan: 56 dB(A) ⁵⁰	Ready mode: inaudible; Active print: 53 dB(A); Active scan: 56 dB(A) ⁵⁰	Ready mode: inaudible; Active print: 54 dB(A); Active scan: 57 dB(A) ⁵¹	Ready mode: inaudible; Active print: 51 dB(A); Active scan: 58 dB(A) ⁵²	Ready mode: 15 dB(A); Active print: 58 dB(A); Active scan: 58dB(A) ⁵³
Acoustic power emissions	Ready mode: inaudible; Active print: 6.7 B(A); Active scan: 7.1 B(A) ⁵⁰	Ready mode: inaudible; Active print: 6.7 B(A); Active scan: 7.1 B(A) ⁵⁰	Ready mode: inaudible; Active print: 6.8 B(A); Active scan: 7.2 B(A) ⁵¹	Ready mode: inaudible; Active print: 6.6 B(A); Active scan: 7.3 B(A) ⁵²	Ready mode: inaudible; Active print: 7.3 B(A); ⁴⁹ Active scan: 7.4 B(A) ⁵³
Power specifications⁵⁴					
Power supply	Built-in; Input voltage: 100 to 240 VAC, 50/60 Hz				
Power consumption	Printing/copying: 650 watts; Ready: 29 watts; Sleep: 1.4 watts; Auto-Off/Manual On: 0.2 watts; Manual Off: 0.2 watts		Printing/copying: 660 watts; Ready: 42 watts; Sleep: 1.6 watts; Auto-Off/Manual On: 0.2 watts; Manual Off: 0.2 watts		
Typical Electricity Consumption (TEC)	1.61 kWh/week		2.01 kWh/week	2.02 kWh/week	4.009 kWh/week
Energy-saving features	HP Auto-On/Auto-Off Technology ⁵⁵ (<i>all models</i>)				
Environmental specifications	ENERGY STAR® certified; EPEAT® Silver ⁵⁶ (<i>all models</i>)				
Safety and regulatory compliance	EN 60950-1:2006 + A11:2009 +A1:2010 +A12:2011 +A2:2013; IEC 60950-1:2005 +A1:2009 +A2:2013; EN 62471:2008/IEC 62471:2010; EN 62479:2010/IEC 62479:2010; China CCC, GS, UL Listed; Other safety approvals as required by individual countries				
Electromagnetic emission standard	CISPR 22:2008 Class A, CISPR 32:2012 Class A, EN 55032:2012 Class A, FCC CFR 47 Part 15 Class A/ICES-003, Issue 6 Class A, EN 61000-3-3:2013, EN 61000-3-2:2014; Other EMC approvals as required by individual countries				
Telecom compliance				Plus: EN 301 489-1 v2.1.1, EN 301 489-17 v3.1.1	
				Plus: EN 300 328 v2.1.1, EN 300 330-2 v1.6.1, EN 301 893 v2.0.7	

Ordering information

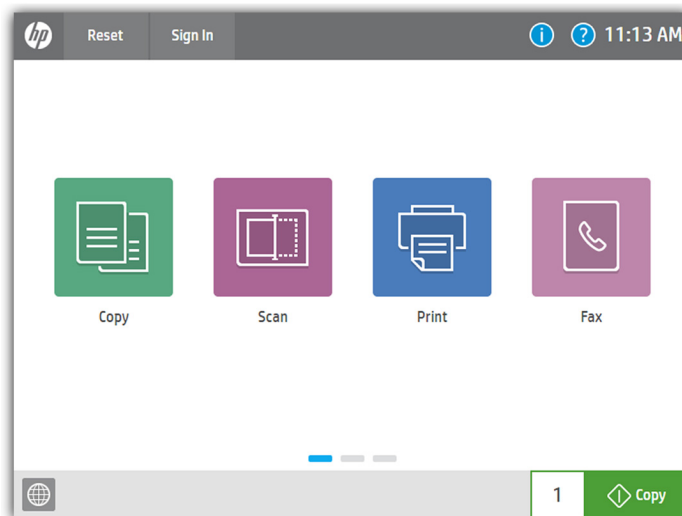
Use accessories and supplies specifically designed for the MFP to help provide efficient performance. To order the accessories and supplies listed here, go to hp.com. To contact HP by country, please visit hp.com/go/contact. If you don't have access to the Internet, contact your qualified HP dealer or call HP (U.S.) at (800) 282-6672.

Product	HP PageWide Enterprise Color MFP 780dn HP PageWide Enterprise Color MFP 780dns HP PageWide Enterprise Color Flow MFP 785f HP PageWide Enterprise Color Flow MFP 785zs HP PageWide Enterprise Color Flow MFP 785z+	J7Z09A J7Z10A J7Z11A J7Z12A Z5G75A
Supplies⁴⁷	HP 982A Black Original PageWide Cartridge (~10,000 pages) HP 982X High Yield Black Original PageWide Cartridge (~20,000 pages) HP 982A Cyan Original PageWide Cartridge (~8,000 pages) HP 982X High Yield Cyan Original PageWide Cartridge (~16,000 pages) HP 982A Yellow Original PageWide Cartridge (~8,000 pages) HP 982X High Yield Yellow Original PageWide Cartridge (~16,000 pages) HP 982A Magenta Original PageWide Cartridge (~8,000 pages) HP 982X High Yield Magenta Original PageWide Cartridge (~16,000 pages) HP PageWide Printhead Wiper Kit (~150,000 pages) HP PageWide Service Fluid Container (~150,000 pages) HP PageWide Roller Kit (~150,000 pages) HP PageWide ADF Maintenance Kit (~150,000 pages) HP 110V Heated Pressure Roller (for 785z+ only) HP 220V Heated Pressure Roller (for 785z+ only) HP Staple Cartridge Refill (5,000 staples) (for 785dns and 785zs only) HP LaserJet Stapler/Stacker Finisher Staples (for Z4L04A)	TOB26A TOB30A TOB23A TOB27A TOB25A TOB29A TOB24A TOB28A W1B43A W1B44A W1B45A J8J95A 3MM39A 3MZ76A J8J96A Y1G14A
Accessories	HP PageWide 550-sheet Paper Tray HP PageWide 550-sheet Paper Tray and Stand HP PageWide 3x550-sheet Paper Tray and Stand HP PageWide 4000-sheet HCl Paper Tray and Stand HP PageWide Stapler/Stacker Finisher HP LaserJet Hole Punch 2/3 Accessory (for Z4L04A) HP LaserJet Hole Punch 2/4 Accessory (for Z4L04A) HP LaserJet Hole Punch Swedish Accessory (for Z4L04A) HP 1 GB DDR3 x 32 144-Pin 800 MHz SODIMM HP Foreign Interface Harness HP Jetdirect 2900nw Print Server HP Jetdirect 3000w NFC/Wireless Accessory ⁴⁴ HP LaserJet MFP Analog Fax Accessory 500 HP Internal USB ports	A7W99A W1B50A W1B51A W1B52A Z4L04A Y1G10A Y1G11A Y1G12A E5K48A B5L31A J8031A J8030A CC487A B5L28A
HP Services	<p>Boost performance—it's your choice. HP Care provides options to help you manage imaging and printing—from Care Pack services to customizable and advisory services. With HP Managed Print Services, we oversee everything for you.</p> <p>Make sure your imaging and printing investments are protected with Care Pack, part of HP Care. Pick your package of services to keep your MFP running and your business moving. Now your office can spend less time trouble-shooting and more time getting things done. For a complete listing of HP Care Pack Service offerings, visit hp.com/go/cpc.⁵⁷</p>	<p>HP Installation Service with Network Workgroup Printer HP 3-year Next Business Day Onsite HP 4-year Next Business Day Onsite HP 5-year Next Business Day Onsite HP 3-year 4 Hour 9x5 Onsite</p> <p>U9JT2E U9NP3E U9RJ7E U9NP5E U9NP6E</p>
Solutions	<p>HP Web Jetadmin: hp.com/go/wja HP Universal Print Driver: hp.com/go/upd HP JetAdvantage Security Manager: hp.com/go/securitymanager HP JetAdvantage On Demand Cloud Solutions: hp.com/go/jetadvantageondemand HP LaserJet fonts, barcodes, and IPDS Emulation available at hp.com/go/laserjetfonts To learn more about available infrastructure, management, and workflow solutions, visit hp.com/go/printing_solutions</p>	

Appendix A: Control panel features

Upgrade to a modern interface

The HP PageWide Enterprise Color MFP 780, 785 series is powered by HP FutureSmart 4.0 firmware. Its modern, tablet-like interface keeps things simple and intuitive across your fleet of Enterprise devices. A scalable control panel interface improves future extensibility and allows for customization, along with a robust set of new apps and usability features. You can even customize with your own wallpaper image and company logo. The new Message Center, with more detailed information and helpful animations, makes it easy to address device events. The simplified home screen displays just four core apps by default (three apps for products without fax). Additional apps are easily accessed by swiping right to left, like with a smartphone or tablet.

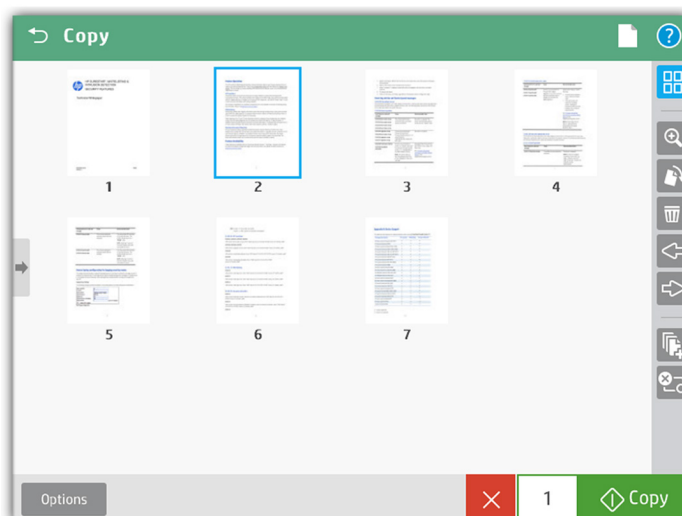


Edit jobs right at the MFP

The control panel features an enhanced image preview—now for both copies and scans. Right from the device's 9.0-inch (22.8 cm) functional touchscreen with 8.0-inch (20.3 cm) Color Graphics Display, you can easily preview and edit scans before sending them. You can apply changes (like rotating) to a single page, or to multiple pages at once. Batch separation allows users to create separate PDF or PDF/A files from scanned pages. The Flow MFP 785f and 785zs models can also create PDF OCR and PDF/A OCR files.



The new user interface enables **swipe**, **rotate**, and **drag-and-drop** capabilities



- Zoom
- Rotate pages
- Delete pages
- Change page order
- Add pages (job build)
- Cancel job

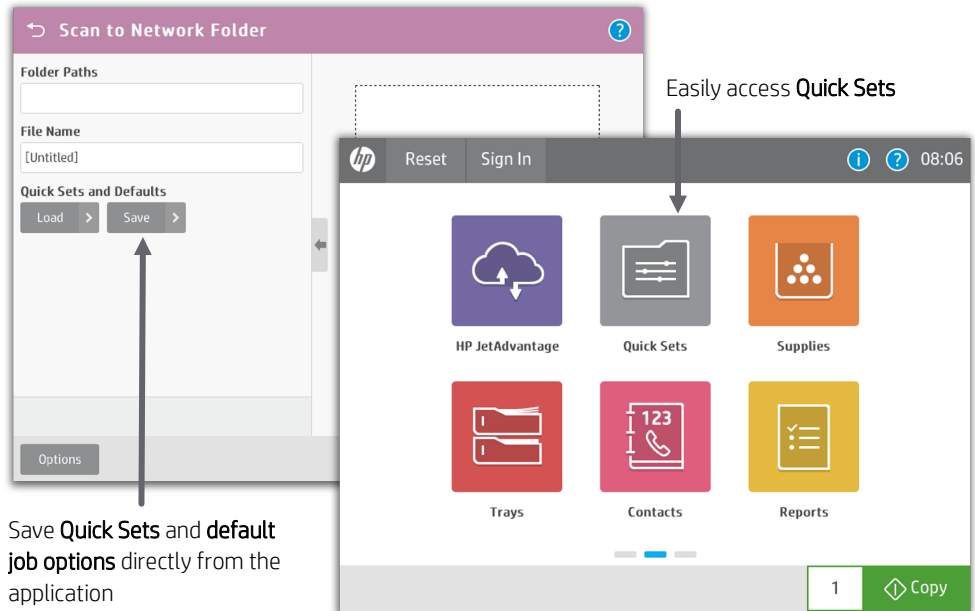
You can start a **preview** prior to committing to the copy job

Use Quick Sets to launch automated workflows

The MFP's digital sending capability allows users to route documents to a variety of destinations like email recipients, network folders, fax, FTP, a USB device, or Microsoft SharePoint.

Quick Sets automate all of the steps of a complicated workflow and provide easy access to the configurations you use most, such as page size, resolution, and file format. You can also specify security settings, such as encrypted PDFs to be delivered through encrypted and signed emails.

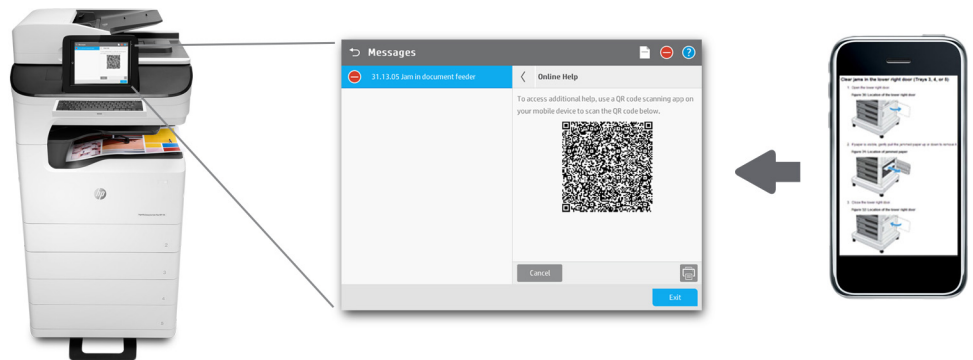
Help users find what they need by moving individual Quick Sets to any screen or folder using the home screen customization feature. With Quick Sets, IT can promote or block access to certain device features. Calls to the helpdesk can be reduced when users have everything they need and are restricted from accessing settings they shouldn't tamper with.



Save **Quick Sets** and **default job options** directly from the application

Troubleshoot with ease

The HP PageWide Enterprise Color MFP 780, 785 series can help save your IT department valuable time when it comes to troubleshooting problems. The Remote Control Panel allows users to operate the user interface remotely, so IT can troubleshoot problems without running to the MFP.⁵⁸ Users can also quickly troubleshoot technical issues with HP's innovative, cloud-based Online Help services that are relevant and up to date. Easily solve problems from your PC or mobile device. A Quick Response (QR) code on the touchscreen links to Online Help using smart phones and tablets.⁵⁹ You can also find these links in the HP Embedded Web Server event log.



- ¹ Based on HP review of 2018 published security features of competitive in-class printers. Only HP offers a combination of security features that can monitor to detect and automatically stop an attack then self-validate software integrity in a reboot. For a list of printers, visit: hp.com/go/PrintersThatProtect. For more information, visit: hp.com/go/printersecurityclaims.
- ² Energy claim based on TEC data reported on energystar.gov as of February 2018. Data normalized to determine energy efficiency of in-class A3 color laser printers and MFPs with published speeds of 20 to 80 ppm, excluding other HP PageWide products. Subject to device settings. Actual results may vary.
- ³ High-yield cartridges are not included in printer purchase; purchase separately. Learn more at hp.com/go/learnaboutsupplies.
- ⁴ Comparison based on printing in Professional Mode.
- ⁵ Fewer service parts claim based on HP analysis of leading in-class A3 color laser printers and MFPs as of February 2018; calculations use publicly available and/or published manufacturer rated yields for long-life consumables and assume 600,000 pages printed (using a 60% black/40% color ratio). Learn more at hp.com/go/pagewideclaims.
- ⁶ Program availability varies. For more information, visit hp.com/recycle.
- ⁷ Comparison of HP PageWide A3 devices with the majority of in-class color ink/laser MFPs (\$3,000-\$10,299 and €2,820-€10,199), and color ink/laser single function printers (\$1,500-\$4,299 and €1,410-€4,099) as of April 2018, excluding other HP PageWide products; competitive set based on market share data as reported by IDC as of Q4 2017, MSRP data provided by gap intelligence and/or Buyers Lab. HP PageWide speeds based on General Office mode and exclude first page. Learn more at hp.com/go/printerspeeds.
- ⁸ The HP PageWide Enterprise Color MFP 780 series prints up to 45/65 ppm, letter and A4, simplex (Professional mode/General Office mode). The HP PageWide Enterprise Color Flow MFP 785 series prints up to 55/75 ppm, letter and A4, simplex (Professional mode/General Office mode). ISO speeds measured using ISO/IEC 24734. Excludes first page or first set of ISO test pages. For details see hp.com/go/printerclaims.
- ⁹ Scan speed measured from ADF at default 300 dpi (black-and-white, grayscale, and color). Actual processing speeds may vary depending on scan resolution, network conditions, computer performance, and application software.
- ¹⁰ Bluetooth® Low Energy is standard only on the HP PageWide Enterprise Color Flow MFP 785zs and Flow MFP 785z+ models, and it cannot be added to other models.
- ¹¹ Wi-Fi Direct printing is embedded in the HP PageWide Enterprise Color Flow MFP 785zs and Flow MFP 785z+ models. All other models can add wireless direct by purchasing the optional HP Jetdirect 3000w NFC/Wireless Direct Accessory. Mobile device needs to be connected directly to the signal of a Wi-Fi Direct® supported MFP or printer prior to printing. Depending on mobile device, an app or driver may also be required. For details, see hp.com/go/mobileprinting. Wi-Fi Direct is a registered trademark of Wi-Fi Alliance®.
- ¹² Fax capability is optional on the HP PageWide Enterprise Color MFP M780 series; it is included on the Flow MFP 785 series models.
- ¹³ An administrator must enable the easy-access USB port before use.
- ¹⁴ Requires an Internet connection to the printer. Services may require registration. App availability varies by country, language, and agreements. For details, see hpconnected.com.
- ¹⁵ Standard and optional paper-handling accessories vary by model. See Series at a glance table, page 7, for details.
- ¹⁶ The 3,250-sheet external finisher with stapler (Z4L04A) is required for the HP PageWide Enterprise Color Flow MFP 785z+ model and must be purchased separately. It can staple up to 50 pages. The lower bin supports output of up to 3,000 sheets and the upper bin supports output of up to 250 sheets. The external finisher is not supported on any other HP PageWide Enterprise Color MFP 780 or 785 series model.
- ¹⁷ Some features require additional purchase. A FutureSmart service pack update may be required to activate security features. Learn more at hp.com/go/printsecurity.
- ¹⁸ Solutions deployed through the Hardware Integration Pocket (HIP) may require additional purchase. HP Proximity Card Reader (CZ208a) is available for separate purchase for select HP devices with HIP and touchscreen display.
- ¹⁹ Use of the HP Trusted Platform Module accessory may require a firmware upgrade.
- ²⁰ HP Web Jetadmin is available for download at no additional charge at hp.com/go/wja.
- ²¹ HP JetAdvantage Security Manager must be purchased separately. For details, see hp.com/go/securitymanager.
- ²² HP JetAdvantage Secure Print works with any network-connected printer or MFP. On-device authentication is available for many HP LaserJet, PageWide, and OfficeJet Pro devices and selected non-HP devices. Some devices may require a firmware upgrade. Internet connection required for cloud storage and retrieval of print jobs. Print-job release from a mobile device requires a network connection and QR code. For more information and a list of supported printers and MFPs, see hp.com/go/JetAdvantageSecurePrint.
- ²³ Color access control capabilities vary from device to device.
- ²⁴ The HP Universal Print Driver is available for download at no additional charge at hp.com/go/upd.
- ²⁵ The 200-sheet ADF can scan documents up to 11.7 x 17 in (297 x 432 mm), as well as up to 11.7 x 39 in (297 x 1000 mm) when "long scan size" is selected.
- ²⁶ The HP PageWide Enterprise Color MFP 780 series has a recommended monthly scan volume (RMSV) of 2,000 to 50,000 pages. The HP PageWide Enterprise Color Flow MFP 785 series has an RMSV of 2,000 to 75,000 pages. HP recommends that the number of scanned pages per month be within the stated range for optimum device performance, based on factors including supplies replacement intervals and device life over an extended warranty period.
- ²⁷ The pull-out keyboard and HP EveryPage are only available on the HP PageWide Enterprise Color Flow MFP 785f, 785zs, and 785z+ models.
- ²⁸ Wireless performance is dependent on physical environment and distance from access point. Wireless operations are compatible with 2.4 GHz routers only.
- ²⁹ The HP PageWide Enterprise Color MFP 780 series and Flow MFP 785f models can add wireless networking with the purchase of the optional HP Jetdirect 2900nw Print Server. Wireless performance is dependent on physical environment and distance from access point and may be limited during active VPN connections.
- ³⁰ The 350-sheet inner finisher is supported on the HP PageWide Enterprise Color MFP 780dns and Flow MFP 785zs models only. Those models have a maximum output capacity of 850 sheets. The MFP 780dn and Flow MFP 785f models have a maximum output capacity of 500 sheets. The Flow MFP 785z+ has a maximum output capacity of 3,250 sheets with the required external finisher.
- ³¹ Purchase of optional paper tray required to reach maximum input capacity.
- ³² Recommended Monthly Page Volume: HP recommends that the number of printed pages per month be within the stated range for optimum device performance, based on factors including supplies replacement intervals and device life over an extended warranty period.
- ³³ Measured using ISO/IEC 17629. Exact speed for first page out varies depending on the system configuration, software application, driver, and document complexity. Learn more at hp.com/go/printerclaims.
- ³⁴ Measured after 15 minutes in sleep. Exact speed varies depending on the system configuration, software application, driver, document complexity, and time in sleep.
- ³⁵ Scan software not included in box. HP Scan and TWAIN driver available for download: hp.com/support.
- ³⁶ An administrator must enable the Scan to SharePoint feature before use.

- ³⁷ First Copy Out and Copy Speed measured using ISO/IEC 29183, excludes first set of test documents. For more information see hp.com/go/printerclaims. Exact speed varies depending on the system configuration, software application, driver, and document complexity.
- ³⁸ Based on standard ITU-T test image #1 at standard resolution and MMR encoding, the HP fax device can transmit at 3 sec/page for V.34 and 6 sec/page for V.17.
- ³⁹ Future firmware updates may support 4608 MB by adding DIMM memory module.
- ⁴⁰ Future firmware updates may support 6656 MB by adding DIMM memory module.
- ⁴¹ Duty cycle is defined as the maximum number of pages per month of imaged output. HP recommends that the number of printed pages per month be within the stated range for optimum device performance, based on factors including supplies replacement intervals and device life over an extended warranty period.
- ⁴² Printer requires ePrint account registration. App or software may be required. Wireless operations are compatible with 2.4 GHz operations only. Learn more at hp.com/go/mobileprinting.
- ⁴³ Supports the following devices running iOS 4.2 or later: iPad®, iPad 2, iPhone® (3GS or later), iPod touch® (3rd generation or later). Works with HP's AirPrint®-enabled printers and requires the printer be connected to the same network as your iOS device. Wireless performance is dependent on physical environment and distance from the access point.
- ⁴⁴ Touch-to-print capability is optional for all models (except the Flow 785zs and 785z+) with the purchase of the optional HP Jetdirect 3000w NFC/Wireless Direct Accessory. Mobile device must support Near Field Communication (NFC)-enabled printing. For more information, see hp.com/go/businessmobileprinting.
- ⁴⁵ Full solution software available only for Windows® 7 and newer, UPD software available only for Windows 7 and newer, HP Software for Mac and Windows is no longer included on the CD, but can be downloaded from 123.hp.com. Legacy Windows Operating Systems (XP, Vista, and equivalent servers) get print and scan drivers only with a reduced feature set, Windows RT OS for Tablets (32- and 64-bit) uses a simplified HP print driver built into the RT OS.
- ⁴⁶ Maximum dimensions of the device are measured with all paper trays folded out and standard accessories installed.
- ⁴⁷ Average black declared yields based on ISO/IEC 19752 and continuous printing. Average color composite (C/M/Y) declared yields based on ISO/IEC 19798 and continuous printing. Actual yields and costs vary considerably depending on images printed, number of color pages printed, and other factors. For details, see hp.com/go/learnaboutsupplies.
- ⁴⁸ If stored below the lowest specified operating temperature, unit must slowly warm up to an approved operating temperature (HP recommends waiting 24 hours at approved operating temperature prior to using the printer).
- ⁴⁹ Printing mono simplex A4 at 46 ppm (780 series) and 56 ppm (785 series). Acoustic values are subject to change. For current information, see hp.com/support.
- ⁵⁰ Scanning at 114 ppm with ADF running.
- ⁵¹ Scanning at 126 ppm with ADF running.
- ⁵² Scanning at 129 ppm with ADF running.
- ⁵³ Scanning at 128 ppm with ADF running.
- ⁵⁴ Power requirements are based on the country/region where the printer is sold. Do not convert operating voltages. This will damage the printer and void the product warranty. Power consumption values typically based on measurement of 115V device.
- ⁵⁵ HP Auto-On/Auto-Off Technology capabilities are subject to printer and settings.
- ⁵⁶ EPEAT® registered where applicable. EPEAT registration varies by country. See epeat.net for registration status by country.
- ⁵⁷ Service levels and response times may vary depending on your geographic location. Service starts on date of hardware purchase. Restrictions and limitations apply. For details, visit hp.com/go/cpc.
- ⁵⁸ Availability dependent on firmware or software updates or upgrades.
- ⁵⁹ Online Help must be enabled on the printer or MFP. Mobile device must have an Internet connection to access online services.

Sign up for updates
hp.com/go/getupdated



© Copyright 2017-2019 HP Development Company, L.P. The information contained herein is subject to change without notice. The only warranties for HP products and services are set forth in the express warranty statements accompanying such products and services. Nothing herein should be construed as constituting an additional warranty. HP shall not be liable for technical or editorial errors or omissions contained herein.

AirPrint, Apple, iPad, iPhone, iPod touch, and Safari are trademarks of Apple Inc. Android and Google Cloud Print are trademarks of Google Inc. Bluetooth is a trademark owned by its proprietor and used by HP Inc. under license. Citrix and XenDesktop are registered trademarks of Citrix Systems, Inc. and/or one more of its subsidiaries, and may be registered in the United States Patent and Trademark Office and in other countries. ENERGY STAR is a registered trademark owned by the U.S. Environmental Protection Agency. Linux is the registered trademark of Linus Torvalds in the U.S. and other countries. Microsoft, SharePoint, Windows, Windows Server, and Windows Vista are U.S. registered trademarks of the Microsoft group of companies. UNIX is a registered trademark of The Open Group.

4AA7-0825ENA, October 2019, Rev. 6

