



USB-AC51

Dual-band Wireless-AC600

USB Adapter

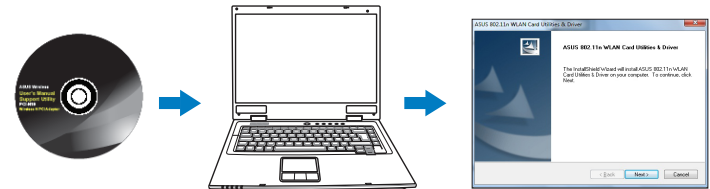


Quick Start Guide

NOTE: For more details and advanced configuration instructions, refer to the user manual included in the Utility CD.

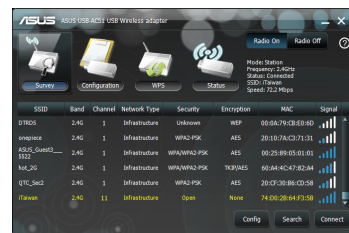
Q14327 / Revised Edition V5 / May 2017

1. Insert the support CD into the optical drive and follow the onscreen instructions to complete the installation.

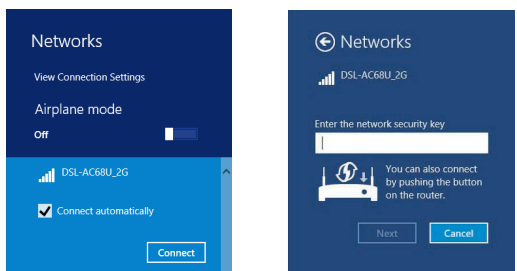


2. Configure USB-AC51 using ASUS utility.

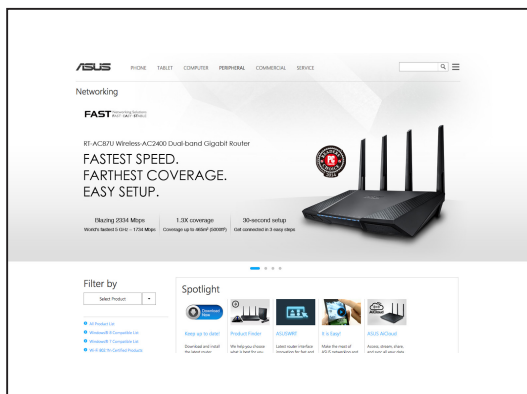
2.1 Connect to a wireless network manually (Windows XP/Vista/7).



2.2 Connect to a wireless network on Windows 8 and 8.1.



3. Setup is completed.



Setting up a Home Network

English

1. Insert the support CD into the optical drive and follow the onscreen instructions to complete the installation.
2. Configure USB-AC51 using ASUS utility.
 - 2.1 Connect to a wireless network manually.
 - 2.2 Connect to a wireless network on Windows 8 and 8.1.
3. Setup is completed.

Français

1. Insérez le CD de support dans le lecteur optique de votre ordinateur, puis suivez les instructions apparaissant à l'écran pour terminer l'installation.
2. Configurez l'adaptateur USB-AC51 à l'aide de l'utilitaire ASUS.
 - 2.1 Connectez-vous manuellement à un réseau sans fil.
 - 2.2 Connectez-vous à un réseau sans fil sous Windows 8 ou 8.1.
3. La configuration est terminée.

Deutsch

1. Legen Sie die Support-CD in das optische Laufwerk ein und befolgen Sie die Bildschirmhinweisungen zum Abschließen der Installation.
2. Konfigurieren Sie den USB-AC51 mithilfe des ASUS Dienstprogramms.
 - 2.1 Verbinden Sie sich manuell mit einem WLAN.
 - 2.2 Verbinden Sie sich unter Windows 8 und 8.1 mit einem WLAN.
3. Die Einrichtung ist abgeschlossen.

Italiano

1. Inserite il CD di supporto nel drive ottico e seguite le istruzioni sullo schermo per completare l'installazione.
2. Configurazione di USB-AC51 tramite l'utilità ASUS.
 - 2.1 Connessione manuale ad una rete senza fili.
 - 2.1 Connessione ad una rete senza fili in Windows 8 e 8.1.
3. La configurazione è completata.

Русский

1. Вставьте компакт-диск в оптический привод и следуйте инструкциям на экране для завершения установки.
2. Настройте USB-AC51 с помощью утилиты ASUS.
 - 2.1 Подключение к беспроводной сети вручную.
 - 2.2 Подключение к беспроводной сети в Windows 8 и 8.1.
3. Настройка завершена.

Polski

1. Włóż płytę CD z oprogramowaniem do napędu optycznego i postępuj zgodnie z instrukcjami
2. Skonfiguruj USB-AC51 programem narzędziowym ASUS.
 - 2.1 Połącz ręcznie z siecią bezprzewodową.
 - 2.2 Podłączyć do sieci bezprzewodowej w systemie Windows 8 lub 8.1.
3. Konfiguracja została zakończona

Čeština

1. Vložte podpůrný disk CD do optické jednotky a dokončete instalaci podle zobrazených pokynů.
2. Nakonfigurujte USB-AC51 pomocí nástroje ASUS.
 - 2.1 Připojte se k bezdrátové síti ručně.
 - 2.2 Připojení k bezdrátové síti v systému Windows 8 nebo 8.1.
3. Instalace je dokončena.

Български

1. Поставете помощния CD диск в оптичното устройство и следвайте инструкциите на екрана, за да приключите инсталацията.
2. Конфигуриране на USB-AC51 с помощта на помощната програма на ASUS.
 - 2.1 Ръчно свързване към безжична мрежа
 - 2.2 Свързване към безжична мрежа на Windows 8 или 8.1.
3. Конфигурирането приключи.

Українська

1. Вставте компакт-диск підтримки до оптичного дисководу і виконуйте інструкції на екрані, щоб завершити інсталяцію.
2. Конфігурація USB-AC51 за допомогою утиліти ASUS.
 - 2.1 Підключіться до бездротової мережі вручну.
 - 2.2 Підключення до бездротової мережі на Windows 8 або 8.1.
3. Налаштування завершено.

Nederlands

1. Stop de ondersteunings-cd in het optische station en volg de instructies op het scherm om de installatie te voltooien.
2. Configureer USB-AC51 met ASUS-hulpprogramma.
 - 2.1 Maak handmatig een verbinding met een draadloos netwerk.
 - 2.2 Verbinding maken met een draadloos netwerk op Windows 8 of 8.1.
3. De instelling is voltooid.

Eesti

1. Sisestage tugi-CD optilisse kettaseadmesse ja järgige ekraanijuhiseid, et installimine lõpule viia.
2. Konfigureerige seade USB-AC51, kasutades ASUS utiliiti.
 - 2.1 Looge traadita võrguga käsitsi ühendus.
 - 2.2 Ühendage traadita võrgu Windows 8 või 8.1.
3. Aseta tuki-CD levylt optiseen asemaan ja suorita asennus loppuun noudattamalla ruudun ohjeita.

Suomi

1. Aseta tuki-CD levylt optiseen asemaan ja suorita asennus loppuun noudattamalla ruudun ohjeita.
2. Määritä USB-AC51 käyttämällä ASUS-apuohjelmaa.
 - 2.1 Muodosta yhteys langattomaan verkkoon manuaalisesti.
 - 2.2 Muodosta yhteys langattomaan verkkoon Windows 8 tai 8.1.
3. Asennus on valmis.

Ελληνικά

1. Εισάγετε το CD υποστήριξης στη μονάδα οπτικού δίσκου και ακολουθήστε τις οδηγίες που εμφανίζονται στην οθόνη για να ολοκληρώσετε την εγκατάσταση.
2. Διαμορφώστε το USB-AC51 χρησιμοποιώντας το βοηθητικό πρόγραμμα της ASUS.
 - 2.1 Συνδεθείτε μη αυτόματα σε ένα ασύρματο δίκτυο.
 - 2.2 Συνδεθείτε σε ασύρματο δίκτυο Windows 8 ή 8.1
3. Η εγκατάσταση έχει ολοκληρωθεί.

Lietuvių

1. Įdėkite pagalbos kompaktinį (CD) diską į optinę tvarkyklę ir vadovaukitės nuorodomis ekrane, norėdami baigti įdiegimą.
2. USB-AC51 konfigūravimas naudojant ASUS paslaugų programą.
 - 2.1 Rankiniu būdu prijunkite bevielį tinklą.
 - 2.2 Prisijungimas prie bealaidžio tinklo Windows 8 arba 8,1
3. Sąranka baigta.

Magyar

1. Helyezze a támogató CD-t az optikai meghajtóba és kövesse a képernyőn megjelenő utasításokat a telepítés elvégzéséhez.
2. Végezze el a USB-AC51 konfigurálását az ASUS segédprogram használatával.
 - 2.1 Csatlakozzon manuálisan egy vezeték nélküli hálózathoz.
 - 2.2 Csatlakozás a vezeték nélküli hálózatot a Windows 8 vagy 8.1.
3. A beállítás befejeződött.

Bahasa Indonesia

1. Masukkan CD dukungan ke drive optic, lalu ikuti petunjuk di layar untuk menyelesaikan penginstalan.
2. Konfigurasikan USB-AC51 menggunakan utilitas ASUS.
 - 2.1 Sambungkan ke jaringan nirkabel secara manual.
 - 2.2 Menghubungkan ke jaringan nirkabel pada Windows 8 atau 8.1
3. Konfigurasi selesai.

Latviski

1. Ielieciet atbalsta CD optiskajā diskdzīnī un izpildiet ekrānā redzamos norādījumus instalācijas veikšanai.
2. Konfigurējiet USB-AC51, izmantojot ASUS utiliti.
 - 2.1 Pievienojieties bezvadu tīklam manuāli.
 - 2.2 Izveidot savienojumu ar bezvadu tīklu, uz windows 8 vai 8.1
3. Iestatīšana ir pabeigta.

한국어

1. 지원 CD를 옵티컬 드라이브에 삽입하고 설치를 완료하기 위해 화면 상의 지시를 따르십시오.
2. ASUS 유틸리티를 이용하여 USB-AC51을 설정하기.
 - 2.1 무선 네트워크를 수동으로 연결하십시오.
 - 2.2 Windows 8 또는 8.1 무선네트워크에 연결합니다.
3. 설치가 완료되었습니다.

Slovenščina

1. V optični pogon vstavite CD s podporo in sledite navodilom na zaslonu za dokončanje namestitve.
2. USB-AC51 namestite s pripomočkom ASUS.
 - 2.1 Ročno vzpostavite povezavo z brezžičnim omrežjem.
 - 2.2 Vzpostavite povezavo z brezžičnim omrežjem v sistemih Windows 8 in 8.1.
3. Namestitvev dokončana.

Hrvatski

1. Stavite CD s podrškom u pogon za optički disk i slijedite upute na zaslonu za dovršenje instalacije.
2. Konfigurirajte USB-AC51 s pomoću ASUS uslužnog programa.
 - 2.1 Ručno povezivanje s bežičnom mrežom.
 - 2.2 Povezivanje s bežičnom mrežom u Windows 8 i 8.1.
3. Postava je dovršena.

Srpski

1. Ubacite CD za podršku u svoj optički drajv i pratite uputstva na ekranu da završite instalaciju.
2. Podesite USB-AC51 koristeći ASUS pomoćni program.
 - 2.1 Povežite se na bežičnu mrežu ručno.
 - 2.2 Povežite se na bežičnu mrežu na Windows 8 i 8.1 operativnom sistemu.
3. Podešavanje je objavljeno.



Setting up a Home Network

Português

1. Insira o CD de suporte na unidade óptica e siga as instruções no ecrã para concluir a instalação.
2. Configure a placa USB-AC51 com o utilitário ASUS.
 - 2.1 Ligue manualmente a uma rede sem fios.
 - 2.2 Conecte-se a uma rede sem fio no Windows 8 ou 8.1.
3. A configuração fica assim concluída.

Română

1. Introduceți CD de instalare în drive-ul optic și urmați instrucțiunile de pe ecran pentru a finaliza instalarea.
2. Configurați USB-AC51 utilizând utilitarul ASUS.
 - 2.1 Conectați-vă manual la o rețea wireless.
 - 2.2 Conectarea la o rețea wireless pe Windows 8 sau 8.1.
3. Conectarea este finalizată

Slovensky

1. Do optickej mechaniky vložte CD s podporou a inštaláciu vykonajte podľa pokynov na obrazovke.
2. Vykonajte konfiguráciu USB-AC51 pomocou nástroja ASUS.
 - 2.1 Pripojte sa k bezdrôtovej sieti manuálne.
 - 2.2 Pripojenie k bezdrôtovej sieti v systéme Windows 8 alebo 8.1.
3. Nastavenie je dokončené.

Español

1. Inserte el CD de soporte en la unidad óptica y siga las instrucciones que aparecerán en la pantalla para llevar a cabo la instalación.
2. Use la utilidad ASUS para configurar la tarjeta USB-AC51.
 - 2.1 Conéctese a una red inalámbrica manualmente.
 - 2.2 Conectarse a una red inalámbrica en Windows 8 o 8.1.
3. Ha finalizado la configuración.

ไทย

1. ใส่แผ่น CD สนับสนุนลงในออปติคัลไดรฟ์ และทำตามขั้นตอนบนหน้าจอเพื่อทำการติดตั้งให้สมบูรณ์
2. กำหนดค่า USB-AC51 ด้วยชุดติดตั้ง ASUS
 - 2.1 เชื่อมต่อไปยังเครือข่ายไร้สายแบบแมนนวล
 - 2.2 เชื่อมต่อกับเครือข่ายไร้สายใน Windows 8 และ 8.1
3. การตั้งค่าเสร็จสมบูรณ์

Türkçe

1. Destek CD'sini optik sürücüye takın ve kurulumu tamamlamak için ekran üzerindeki talimatları izleyin.
2. ASUS programını kullanarak USB-AC51'ü yapılandırın.
 - 2.1 Kablosuz bir ağa manuel bağlanın.
 - 2.2 Windows 8 ve 8.1 kablosuz bir ağa bağlanın.
3. Kurulum tamamlanır.

Svenska

1. Sätt i support-CD-skivan i den optiska enheten och följ instruktionerna på skärmen för att fullfölja installationen.
2. Ställ in USB-AC51 med ASUS verktyget.
 - 2.1 Ansluta till ett trådlöst nätverk manuellt.
 - 2.2 Ansluta till ett trådlöst nätverk på Windows 8 och 8.1.
3. Installationen är klar.

繁體中文

1. 將驅動程式與應用程式光碟放入光碟機中，接著依照螢幕上的說明完成安裝。
2. 使用華碩應用程式設定 USB-AC51。
 - 2.1 手動連線到一個無線網路。
 - 2.2 在 Windows 8 或 8.1 連線到一個無線網路。
3. 設定完成。

簡中

1. 将驱动程序与应用程序光盘放入光驱中，接着依照屏幕上的说明完成安装。
2. 使用华硕应用程序设置 USB-AC51。
 - 2.1 手动连接到一个无线网络。
 - 2.2 从 Windows 8 或 8.1 连接到一个无线网络。
3. 设置完成。

Dans

1. Sæt den medfølgende cd i diskdrevet, og følg instruktionerne på skærmen for at udføre installationen.
2. Sådan opsættes din USB-AC51 med hjælpeprogrammet fra ASUS.
 - 2.1 Opret manuelt forbindelse til et trådløst netværk.
 - 2.2 Opret manuelt forbindelse til et trådløst netværk.
3. Opsætningen er færdig.

Norsk

1. Legg støtte-CD-en i den optiske stasjonen og følg anvisningene på skjermen for å fullføre installasjonen.
2. Sett opp USB-AC51 ved hjelp av ASUS-verktøyet.
 - 2.1 Koble til et trådløst nettverk manuelt.
 - 2.2 Koble til et trådløst nettverk på Windows 8 og 8.1.
3. Oppsett ferdig.

Federal Communications Commission Statement

This device complies with Part 15 of the FCC Rules. Operation is subject to the following two conditions:

- This device may not cause harmful interference.
- This device must accept any interference received, including interference that may cause undesired operation.

This equipment has been tested and found to comply with the limits for a class B digital device, pursuant to Part 15 of the FCC Rules. These limits are designed to provide reasonable protection against harmful interference in a residential installation.

This equipment generates, uses and can radiate radio frequency energy and, if not installed and used in accordance with the instructions, may cause harmful interference to radio communications. However, there is no guarantee that interference will not occur in a particular installation. If this equipment does cause harmful interference to radio or television reception, which can be determined by turning the equipment off and on, the user is encouraged to try to correct the interference by one or more of the following measures:

- Reorient or relocate the receiving antenna.
- Increase the separation between the equipment and receiver.
- Connect the equipment into an outlet on a circuit different from that to which the receiver is connected.
- Consult the dealer or an experienced radio/TV technician for help.



CAUTION: Any changes or modifications not expressly approved by the party responsible for compliance could void the user's authority to operate the equipment.

If this device is going to be operated in 5.15 ~ 5.25GHz frequency range, then it is restricted in indoor environment only.

Prohibition of Co-location

This device and its antenna(s) must not be co-located or operating in conjunction with any other antenna or transmitter.

FCC Radiation Exposure Statement

This equipment complies with FCC RF radiation exposure limits set forth for an uncontrolled environment. This device was tested for typical lap held operations with the device contacted directly to the human body to the back side of the notebook computer. To maintain compliance with FCC RF exposure compliance requirements, avoid direct contact to the transmitting antenna during transmitting.



WARNING! This equipment must be installed and operated in accordance with provided instructions and the antenna(s) used for this transmitter must be installed to provide a separation distance of at least 0.5cm from all persons and must not be co-located or operating in conjunction with any other antenna or transmitter.

ASUS Recycling/Takeback Services

ASUS recycling and takeback programs come from our commitment to the highest standards for protecting our environment. We believe in providing solutions for you to be able to responsibly recycle our products, batteries, other components, as well as the packaging materials. Please go to <http://csr.asus.com/english/Takeback.htm> for the detailed recycling information in different regions.

REACH

Complying with the REACH (Registration, Evaluation, Authorisation, and Restriction of Chemicals) regulatory framework, we published the chemical substances in our products at ASUS REACH website at <http://csr.asus.com/english/REACH.htm>.

India RoHS

This product complies with the "India E-Waste (Management) Rules, 2016" and prohibits use of lead, mercury, hexavalent chromium, polybrominated biphenyls (PBBs) and polybrominated diphenyl ethers (PBDEs) in concentrations exceeding 0.1 % by weight in homogenous materials and 0.01 % by weight in homogenous materials for cadmium, except for the exemptions listed in Schedule II of the Rule.

KC: Korea Warning Statement

| | |
|------------------------|--|
| 등급 기기 (가정용 방송통신기자재) | 이 기기는 가정용(등급)으로 전자파적합등록을 한 기기로서 주로 가정에서 사용하는 것을 목적으로 하며, 모든 지역에서 사용할 수 있습니다. |
|------------------------|--|

| | |
|--|--|
| Class B equipment (For Home Use Broadcasting & Communication Equipment) | This equipment is home use (Class B) electromagnetic wave suitability and to be used mainly at home and it can be used in all areas. |
|--|--|

Precautions for the use of the device

- Pay particular attention to the personal safety when use this device in airports, hospitals, gas stations and professional garages.
- Medical device interference: Maintain a minimum distance of at least 15 cm (6 inches) between implanted medical devices and ASUS products in order to reduce the risk of interference.
- Kindly use ASUS products in good reception conditions in order to minimize the radiation's level.
- Keep the device away from pregnant women and the lower abdomen of the teenager.

Précautions d'emploi de l'appareil

- Soyez particulièrement vigilant quant à votre sécurité lors de l'utilisation de cet appareil dans certains lieux (les avions, les aéroports, les hôpitaux, les stations-service et les garages professionnels).
- Évitez d'utiliser cet appareil à proximité de dispositifs médicaux implantés. Si vous portez un implant électronique (stimulateurs cardiaques, pompes à insuline, neurostimulateurs...), veuillez impérativement respecter une distance minimale de 15 centimètres entre cet appareil et votre corps pour réduire les risques d'interférence.
- Utilisez cet appareil dans de bonnes conditions de réception pour minimiser le niveau de rayonnement. Ce n'est pas toujours le cas dans certaines zones ou situations, notamment dans les parkings souterrains, dans les ascenseurs, en train ou en voiture ou tout simplement dans un secteur mal couvert par le réseau.
- Tenez cet appareil à distance des femmes enceintes et du bas-ventre des adolescents.

RF Exposure Information

This ASUS product has been tested and meets applicable European SAR limits. The SAR limit is 2.0 W/kg in countries that set the limit averaged over 10 grams of tissue. The specific maximum SAR values for this device are as follows:

Body: 1.22W/Kg

When you carry this device or use it, either use an approved accessory such as a holster or otherwise maintain a distance of 0.5 cm from the body to ensure compliance with RF exposure requirements.

Informations concernant l'exposition aux fréquences radio (RF)

Ce produit ASUS a été testé et est conforme à la limite de DAS européenne. La limite de DAS est de 2.0 W/Kg dans les pays qui fixent la limite moyenne sur 10 g de tissu humains. Les valeurs de DAS spécifiques maximales pour cet appareil:

Corps : 1.22 W/Kg

Lorsque vous transportez ou utilisez cet appareil, utilisez un accessoire agréé tel qu'un étui ou maintenez-le à une distance de 0.5 cm du corps pour assurer la conformité aux exigences concernant l'exposition aux fréquences radio (RF).

AEEE Yönetmeliğine Uygundur. IEEE Yönetmeliğine Uygundur.

- Bu Cihaz Türkiye analog şebekelerde çalışabilecek şekilde tasarlanmıştır.
- Cihazın ayrıntılı kurulum rehberi kutu içeriğinden çıkan CD içerisindedir. Cihazın kullanıcı arayüzü Türkçe'dir.
- Cihazın kullanılması planlanan ülkelerde herhangi bir kısıtlaması yoktur. Ülkeler simgeler halinde kutu üzerinde belirtilmiştir.



Compliance Statement of Innovation, Science and Economic Development Canada (ISED)

This device complies with Innovation, Science and Economic Development Canada licence exempt RSS standard(s). Operation is subject to the following two conditions: (1) this device may not cause interference, and (2) this device must accept any interference, including interference that may cause undesired operation of the device.

Operation in the band 5150–5250 MHz is only for indoor use to reduce the potential for harmful interference to co-channel mobile satellite systems.

CAN ICES-3(B)/NMB-3(B)

Условия эксплуатации:

- Температура эксплуатации устройства: 0-40 °C. Не используйте устройство в условиях экстремально высоких или низких температур.
- Не размещайте устройство вблизи источников тепла, например, рядом с микроволновой печью, духовым шкафом или радиатором.
- Использование несовместимого или несертифицированного адаптера питания может привести к возгоранию, взрыву и прочим опасным последствиям.

- При подключении к сети электропитания устройство следует располагать близко к розетке, к ней должен осуществляться беспрепятственный доступ.
- Утилизация устройства осуществляется в соответствии с местными законами и положениями. Устройство по окончании срока службы должны быть переданы в сертифицированный пункт сбора для вторичной переработки или правильной утилизации.

- Данное устройство не предназначено для детей. Дети могут пользоваться устройством только в присутствии взрослых.
- Не выбрасывайте устройство и его комплектующие вместе с обычными бытовыми отходами.

安全說明:

- 請在溫度為0°C (32°F)至40°C (104°F)之間的環境中使用本產品
- 請依照產品上的電源功率貼紙說明使用正確的電源變壓器,如果使用錯誤規格的電源變壓器有可能會造成內部零件的損壞
- 請勿將產品放置於不平坦或不穩定的表面,若產品的機殼受損,請聯絡維修服務人員
- 請勿在產品上放置其他物品,請勿將任何物品塞入產品內,以避免引起元件短路或電路損毀
- 請保持機器在乾燥的環境下使用,雨水、溼氣、液體等含有礦物質將會腐蝕電子線路,請勿在雷電天氣下使用數據機。
- 請勿堵塞產品的通風孔,以避免因散熱不良而導致系統過熱。
- 請勿使用破損的電源線,附件或其他周邊產品。
- 如果電源已毀損,請不要嘗試自行修復,請將其交給專業技術服務人員或經銷商來處理
- 為了防止電擊風險,在搬動主機之前,請先將電源線插頭暫時從電源插座上拔除

低功率電波輻射性電機管理辦法

(1)「經型式認證合格之低功率射頻電機，非經許可，公司、商號或使用者均不得擅自變更頻率、加大功率或變更原設計之特性及功能」以及(2)「低功率射頻電機之使用不得影響飛航安全及干擾合法通信；經發現有干擾現象時，應立即停用，並改善至無干擾時方得繼續使用。前項合法通信，指依電信法規定作業之無線電通信。低功率射頻電機須忍受合法通信或工業、科學及醫療用電波輻射性電機設備之干擾」。

Radio Frequency (RF) Exposure Information

The radiated output power of the ASUS Wireless Device is below the Innovation, Science and Economic Development Canada radio frequency exposure limits. The ASUS Wireless Device should be used in such a manner such that the potential for human contact during normal operation is minimized.

This equipment should be installed and operated with a minimum distance of 5 mm between the radiator any part of your body.

This device has been certified for use in Canada. Status of the listing in the Innovation, Science and Economic Development Canada's REL (Radio Equipment List) can be found at the following web address:

http://www.ic.gc.ca/eic/site/ceb-bhst.nsf/eng/h_tt00020.html

Additional Canadian information on RF exposure also can be found at the following web:

<https://www.ic.gc.ca/eic/site/smt-gst.nsf/eng/sf08792.html>

Déclaration de conformité de Innovation, Sciences et Développement économique Canada (ISED)

Le présent appareil est conforme aux CNR d'Innovation, Sciences et Développement économique Canada applicables aux appareils radio exempts de licence. L'exploitation est autorisée aux deux conditions suivantes : (1) l'appareil ne doit pas produire de brouillage, et (2) l'utilisateur de l'appareil doit accepter tout brouillage radioélectrique subi, même si le brouillage est susceptible d'en compromettre le fonctionnement.

La bande 5150 – 5250 MHz est réservée uniquement pour une utilisation à l'intérieur afin de réduire les risques de brouillage préjudiciable aux systèmes de satellites mobiles utilisant les mêmes canaux.

CAN ICES-3(B)/NMB-3(B)

Informations concernant l'exposition aux fréquences radio (RF)

La puissance de sortie émise par cet appareil sans fil est inférieure à la limite d'exposition aux fréquences radio d'Innovation, Sciences et Développement économique du Canada (ISED). Utilisez l'appareil sans fil de façon à minimiser les contacts humains lors d'un fonctionnement normal.

Cet équipement doit être installé et utilisé avec un minimum de 5 mm de distance entre la source de rayonnement et votre corps.

L'utilisation de cet appareil est autorisée au Canada. Pour consulter l'entrée correspondant à l'appareil dans la liste d'équipement radio (REL - Radio Equipment List) d'Innovation, Sciences et Développement économique du Canada, rendez-vous sur :

http://www.ic.gc.ca/eic/site/ceb-bhst.nsf/eng/h_tt00020.html

Pour des informations supplémentaires concernant l'exposition aux fréquences radio au Canada, rendez-vous sur : <https://www.ic.gc.ca/eic/site/smt-gst.nsf/eng/sf08792.html>



IC Warning Statement

Under Industry Canada regulations, this radio transmitter may only operate using an antenna of a type and maximum (or lesser) gain approved for the transmitter by Industry Canada. To reduce potential radio interference to other users, the antenna type and its gain should be so chosen that the equivalent isotropically radiated power (e.i.r.p.) is not more than that necessary for successful communication.

This radio transmitter (IC: 3568A-USBAC51) has been approved by Industry Canada to operate with the antenna types listed below with the maximum permissible gain and required antenna impedance for each antenna type indicated. Antenna types not included in this list, having a gain greater than the maximum gain indicated for that type, are strictly prohibited for use with this device.

This Class [B] digital apparatus complies with Canadian ICES-003.
Cet appareil numérique de la classe [B] est conforme à la norme NMB-003 du Canada.

For product available in the USA/Canada market, only channel 1~11 can be operated. Selection of other channels is not possible.

| | |
|--|--|
| Manufacturer | ASUSTeK Computer Inc. Tel: +886-2-2894-3447 Address: 4F, No. 150, LI-TE RD., PEITOU, TAIPEI 112, TAIWAN |
| Authorised representative in Europe | ASUS Computer GmbH Address: HARKORT STR. 21-23, 40880 RATINGEN, GERMANY |
| Authorised distributors in Turkey | BOGAZICI BILGISAYAR TICARET VE SANAYI A.S. Tel./FAX No.: +90 212 331 10 00 / +90 212 332 28 90 Address: ESENTEPE MAH. BUYUKDERE CAD. ERCAN HAN B BLOK NO.121 SISLI, ISTANBUL 34394 |
| | CIZGI Elektronik San. Tic. Ltd. Sti. Tel./FAX No.: +90 212 356 70 70 / +90 212 356 70 69 Address: GURSEL MAH. AKMAN SK.47B 1 KAGITHANE/ISTANBUL |
| | KOYUNCU ELEKTRONİK BİLGİ İŞLEM SİST. SAN. VE DİŞ TİC. A.Ş. Tel. No.: +90 216 5288888 Address: EMEK MAH.ORDU CAD. NO:18, SARIGAZI, SANCAKTEPE ISTANBUL |
| | ENDEKS BİLİŞİM SAN VE DİŞ TİC LTD ŞTİ Tel./FAX No.: +90 216 523 35 70 / +90 216 523 35 71 Address: NECİP FAZIL BULVARI, KEYAP CARSI SITESI, G1 BLOK, NO:115 Y.DUDULLU, UMRANIYE, ISTANBUL |
| | PENTA TEKNOLOJİ URUNLERİ DAGITIM TICARET A.Ş Tel./FAX No.: +90 216 528 0000 Address: ORGANIZE SANAYİ BOLGESİ NATO YOLU 4.CADDE NO:1 UMRANIYE, ISTANBUL 34775 |

Networks Global Hotline Information

| Region | Country/ Area | Hotline Numbers | Service Hours |
|---------------------|----------------------------|-----------------------|--|
| Europe | Cyprus | 800-92491 | 09:00-13:00; 14:00-18:00 Mon-Fri |
| | France | 0033-170949400 | 09:00-18:00 Mon-Fri |
| | Germany | 0049-1805010920 | 09:00-18:00 Mon-Fri (component support) 10:00-17:00 Mon-Fri 0049-2102959911 (Fax) |
| | | 0049-1805010923 | |
| | | 0049-2102959911 (Fax) | |
| | Hungary | 0036-15054561 | 09:00-17:30 Mon-Fri |
| | Italy | 199-400089 | 09:00-13:00; 14:00-18:00 Mon-Fri |
| | Greece | 00800-44142044 | 09:00-13:00 ; 14:00-18:00 Mon-Fri |
| | Austria | 0043-820240513 | 09:00-18:00 Mon-Fri |
| | Netherlands/ Luxembourg | 0031-591570290 | 09:00-17:00 Mon-Fri |
| | Belgium | 0032-78150231 | 09:00-17:00 Mon-Fri |
| | Norway | 0047-2316-2682 | 09:00-18:00 Mon-Fri |
| | Sweden | 0046-858769407 | 09:00-18:00 Mon-Fri |
| | Finland | 00358-969379690 | 10:00-19:00 Mon-Fri |
| | Denmark | 0045-38322943 | 09:00-18:00 Mon-Fri |
| | Poland | 0048-225718040 | 08:30-17:30 Mon-Fri |
| | Spain | 0034-902889688 | 09:00-18:00 Mon-Fri |
| | Portugal | 00351-707500310 | 09:00-18:00 Mon-Fri |
| | Slovak Republic | 00421-232162621 | 08:00-17:00 Mon-Fri |
| Czech Republic | 00420-596766888 | 08:00-17:00 Mon-Fri | |
| Switzerland-German | 0041-848111010 | 09:00-18:00 Mon-Fri | |
| Switzerland-French | 0041-848111014 | 09:00-18:00 Mon-Fri | |
| Switzerland-Italian | 0041-848111012 | 09:00-18:00 Mon-Fri | |
| United Kingdom | 0044-1442265548 | 09:00-17:00 Mon-Fri | |
| Ireland | 0035-31890719918 | 09:00-17:00 Mon-Fri | |
| Russia and CIS | 008-800-100-ASUS | 09:00-18:00 Mon-Fri | |
| Ukraine | 0038-0445457727 | 09:00-18:00 Mon-Fri | |

Networks Global Hotline Information

| Region | Country/ Area | Hotline Numbers | Service Hours |
|--------------|--|--|--|
| Asia-Pacific | Australia | 1300-278788 | 09:00-18:00 Mon-Fri |
| | New Zealand | 0800-278788 | 09:00-18:00 Mon-Fri |
| | Japan | 0800-1232787 | 09:00-17:00 Sat-Sun |
| | | 0081-570783886 (Non-Toll Free) | 09:00-18:00 Mon-Fri 09:00-17:00 Sat-Sun |
| | Korea | 0082-215666868 | 09:30-17:00 Mon-Fri |
| | Thailand | 0066-24011717 1800-8525201 | 09:00-18:00 Mon-Fri |
| | Singapore | 0065-64157917 | 11:00-19:00 Mon-Fri |
| | | 0065-67203835 | 11:00-19:00 Mon-Fri |
| | | (Repair Status Only) | 11:00-13:00 Sat |
| | Malaysia | 1300-88-3495 | 10:00-19:00 Mon-Fri |
| | Philippines | 1800-18550163 | 09:00-18:00 Mon-Fri |
| | India | 1800-2090365 | 09:00-18:00 Mon-Sat |
| | India(WL/NW) | | 09:00-21:00 Mon-Sun |
| Indonesia | 0062-2129495000 500128 (Local Only) | 09:30-17:00 Mon-Fri 9:30 – 12:00 Sat | |
| Vietnam | 1900-555581 | 08:00-12:00 13:30-17:30 Mon-Sat | |
| Hong Kong | 00852-35824770 | 10:00-19:00 Mon-Sat | |
| Taiwan | 0800-093-456; 02-81439000 | 9:00-12:00 Mon-Fri; 13:30-18:00 Mon-Fri | |
| Americas | USA | 1-812-282-2787 | 8:30-12:00 EST Mon-Fri |
| | Canada | | 9:00-18:00 EST Sat-Sun |
| | Mexico | 001-8008367847 | 08:00-20:00 CST Mon-Fri 08:00-15:00 CST Sat |
| | Brazil | 4003 0988 (Capital) 0800 880 0988 (demais localidades) | 9:00am-18:00 Mon-Fri |

Networks Global Hotline Information

| Region | Country/ Area | Hotline Numbers | Service Hours |
|----------------------|-------------------|--|--|
| Middle East + Africa | Egypt | 800-2787349 | 09:00-18:00 Sun-Thu |
| | Saudi Arabia | 800-1212787 | 09:00-18:00 Sat-Wed |
| | UAE | 00971-42958941 | 09:00-18:00 Sun-Thu |
| | Turkey | 0090-2165243000 | 09:00-18:00 Mon-Fri |
| | South Africa | 0861-278772 | 08:00-17:00 Mon-Fri |
| | Israel | *6557/00972-39142800 *9770/00972-35598555 | 08:00-17:00 Sun-Thu 08:30-17:30 Sun-Thu |
| | Balkan Countries | Romania | 0040-213301786 |
| Bosnia Herzegovina | | 00387-33773163 | 09:00-17:00 Mon-Fri |
| Bulgaria | | 00359-70014411 00359-29889170 | 09:30-18:30 Mon-Fri 09:30-18:00 Mon-Fri |
| Croatia | | 00385-16401111 | 09:00-17:00 Mon-Fri |
| Montenegro | | 00382-20608251 | 09:00-17:00 Mon-Fri |
| Serbia | | 00381-112070677 | 09:00-17:00 Mon-Fri |
| Slovenia | | 00368-59045400 00368-59045401 | 08:00-16:00 Mon-Fri |
| Estonia | 00372-6671796 | 09:00-18:00 Mon-Fri | |
| Baltic Countries | Latvia | 00371-67408838 | 09:00-18:00 Mon-Fri |
| | Lithuania-Kaunas | 00370-37329000 | 09:00-18:00 Mon-Fri |
| | Lithuania-Vilnius | 00370-522101160 | 09:00-18:00 Mon-Fri |



- NOTES:**
- UK support e-mail: network_support_uk@asus.com
 - For more information, visit the ASUS support site at <https://www.asus.com/support/>

English

CE statement

Simplified EU Declaration of Conformity
ASUSTek Computer Inc. hereby declares that this device is in compliance with the essential requirements and other relevant provisions of Directive 2014/53/EU. Full text of EU declaration of conformity is available at <https://www.asus.com/Networking/USBAC51/HelpDesk/>.

This equipment complies with EU radiation exposure limits set forth for an uncontrolled environment. This equipment should be installed and operated with minimum distance 5mm between the radiator & your body.

All operational modes:

2.4GHz: 802.11b, 802.11g, 802.11n (HT20), 802.11n (HT40)
5GHz: 802.11a, 802.11n (HT20), 802.11n (HT40), 802.11ac (VHT20), 802.11ac (VHT40), 802.11ac (VHT80)

The frequency, mode and the maximum transmitted power in EU are listed below:

2412-2472MHz (802.11g 6 Mbps): 19.51 dBm
5180-5240MHz (802.11n HT40 MCS0): 22.73 dBm
5260-5320MHz (802.11ac VHT80 MCS0): 19.84 dBm
5500-5700MHz (802.11ac VHT80 MCS0): 19.93 dBm

The device is restricted to indoor use only when operating in the 5150 to 5350 MHz frequency range.

| | | | | | | | |
|--|----|----|----|----|----|----|----|
| | AT | BE | BG | CZ | DK | EE | FR |
| | DE | IS | IE | IT | EL | ES | CY |
| | LV | LI | LT | LU | HU | MT | NL |
| | NO | PL | PT | RO | SI | SK | TR |
| | FI | SE | CH | UK | HR | | |

Safety Notices

- Use this product in environments with ambient temperatures between 0°C(32°F) and 40°C(104°F).
- Refer to the rating label on the bottom of your product and ensure your power adapter complies with this rating.
- DO NOT place on uneven or unstable work surfaces. Seek servicing if the casing has been damaged.
- DO NOT place or drop objects on top and do not shove any foreign objects into the product.
- DO NOT expose to or use near liquids, rain, or moisture. DO NOT use the modem during electrical storms.
- DO NOT cover the vents on the product to prevent the system from getting overheated.
- DO NOT use damaged power cords, accessories, or other peripherals.
- If the Adapter is broken, do not try to fix it by yourself. Contact a qualified service technician or your retailer.
- To prevent electrical shock hazard, disconnect the power cable from the electrical outlet before relocating the system.



Greek

CE statement

Απλοποιημένη δήλωση συμμόρφωσης της ΕΕ
Με το παρόν, η ASUSTek Computer Inc. δηλώνει πως αυτή η συσκευή συμμορφώνεται με τις θεμελιώδεις απαιτήσεις και άλλες σχετικές διατάξεις της Οδηγίας 2014/53/ΕΕ. Το πλήρες κείμενο της δήλωσης συμμόρφωσης της ΕΕ είναι διαθέσιμο στη διεύθυνση <https://www.asus.com/Networking/USBAC51/HelpDesk/>.

Ο παρόν εξοπλισμός συμμορφώνεται με τα όρια έκθεσης σε ακτινοβολία της ΕΕ που έχουν διατυπωθεί για μη ελεγχόμενο περιβάλλον. Ο συγκεκριμένος εξοπλισμός πρέπει να εγκατασταθεί και να λειτουργεί με ελάχιστη απόσταση 20 εκ μεταξύ της συσκευής ακτινοβολίας και του σώματός σας.

Όλοι οι τρόποι λειτουργίας:

2.4GHz: 802.11b, 802.11g, 802.11n (HT20), 802.11n (HT40)
5GHz: 802.11a, 802.11n (HT20), 802.11n (HT40), 802.11ac (VHT20), 802.11ac (VHT40), 802.11ac (VHT80)

Η συχνότητα, ο τρόπος λειτουργίας και η μέγιστη μεταδιδόμενη ισχύς στην ΕΕ αναφέρονται παρακάτω:

2412-2472MHz (802.11g 6 Mbps): 19.51 dBm
5180-5240MHz (802.11n HT40 MCS0): 22.73 dBm
5260-5320MHz (802.11ac VHT80 MCS0): 19.84 dBm
5500-5700MHz (802.11ac VHT80 MCS0): 19.93 dBm

Η συσκευή περιορίζεται σε χρήση σε εσωτερικούς χώρους όταν λειτουργεί στη ζώνη συχνοτήτων 5150 έως 5350 MHz.

Safety Notices

- Να χρησιμοποιείτε το προϊόν σε χώρους με θερμοκρασίες περιβάλλοντος από 0°C έως 40°C.
- Ανατρέξτε στην ετικέτα χαρακτηριστικών στο κάτω μέρος του προϊόντος σας και βεβαιωθείτε ότι ο προσαρμογέας τροφοδοσίας σας συμμορφώνεται με την αναγραφόμενη τιμή.
- ΜΗΝ τοποθετείτε τη συσκευή σε ανώμαλη ή ασταθή επιφάνεια εργασίας. Πηγαίνετε τη συσκευή για σέρβις αν το περίβλημα έχει πάθει βλάβη.
- ΜΗΝ τοποθετείτε αντικείμενα επάνω και μην σπρώχνετε αντικείμενα μέσα στο προϊόν.
- ΜΗΝ την εκθέτετε ή τη χρησιμοποιείτε κοντά σε υγρά, βροχή, ή υγρασία. ΜΗΝ χρησιμοποιείτε το μόντεν κατά τη διάρκεια ηλεκτρικής καταιγίδας.
- ΜΗΝ καλύπτετε τα ανοίγματα εξαερισμού στο προϊόν για να αποφύγετε τυχόν υπερθέρμανση του συστήματος.
- ΜΗΝ καλύπτετε τα ανοίγματα εξαερισμού στο Desktop PC για να αποφύγετε τυχόν υπερθέρμανση του συστήματος.
- Αν το καλώδιο παροχής ρεύματος πάθει βλάβη, μην προσπαθήσετε να το επιδιορθώσετε μόνοι σας. Επικοινωνήστε με κατάλληλα εκπαιδευμένο τεχνικό επισκευών ή με τον μεταπωλητή σας.
- Για να αποφύγετε τον κίνδυνο ηλεκτροπληξίας, αποσυνδέστε το καλώδιο παροχής ρεύματος από την πρίζα πριν αλλάξετε θέση στο σύστημα.



Lituanian

ASUSTek Computer Inc. prietaisų atitinkama pagrindiniai reikalavimus ir kitas susijusias Direktyvos 2014/53/EB nuostatas. Visą ES atitikties deklaracijos tekstą rasite https://www.asus.com/Networking/USBAC51/HelpDesk/.

Šį įrangą atitinka ES radiacijos poveikio ribas, nustatytas nekontroliuojamai aplinkai. Šį prietaisą reikia statyti ir naudoti ten, kur jis būtų bent 5 mm atstumu nuo jūsų kūno.

Visi operaciniai režimai:
2.4GHz: 802.11b, 802.11g, 802.11n (HT20), 802.11n (HT40)
5GHz: 802.11a, 802.11n (HT20), 802.11n (HT40), 802.11ac (VHT20),802.11ac (VHT40),802.11ac (VHT80)
Dažnis, režimas ir maksimali signalų siuntimo galia ES nurodyta toliau:
2412-2472MHz (802.11g 6 Mbps): 19.51 dBm
5180-5240MHz (802.11n HT40 MCS0): 22.73 dBm
5260-5320MHz (802.11ac VHT80 MCS0): 19.84 dBm
5500-5700MHz (802.11ac VHT80 MCS0): 19.93 dBm
Džiaūnė tego ūrządzenia w zakresie częstotliwości od 5150 do 5350 MHz jest ograniczone wyłącznie do użytku wewnątrz pomieszczeń.

2.4GHz: 802.11b, 802.11g, 802.11n (HT20), 802.11n (HT40)

5GHz: 802.11a, 802.11n (HT20), 802.11n (HT40), 802.11ac (VHT20),802.11ac (VHT40),802.11ac (VHT80)

Poniżej wskazano częstotliwość, tryb i maksymalną moc nadawania w UE:

2412-2472MHz (802.11g 6 Mbps): 19.51 dBm

5180-5240MHz (802.11n HT40 MCS0): 22.73 dBm

5260-5320MHz (802.11ac VHT80 MCS0): 19.84 dBm

5500-5700MHz (802.11ac VHT80 MCS0): 19.93 dBm

Działanie tego urządzenia w zakresie częstotliwości od 5150 do 5350 MHz jest ograniczone wyłącznie do użytku wewnątrz pomieszczeń.

Safety Notices

- Ten produkt należy używać w miejscach o temperaturze otoczenia w zakresie 0°C (32°F) do 40°C (104°F).
- Należy sprawdzić tabliczkę znamionową na spodzie produktu i upewnić się, że zasilacz jest zgodny z podanymi wartościami.
- NIE NALEŻY umieszczać urządzenia na nierównych lub niestabilnych powierzchniach roboczych. Po uszkodzeniu obudowy należy przekazać komputer do serwisu.
- NIE NALEŻY umieszczać, upuszczać lub wypychać żadnych obcych obiektów na produkt.
- NEI NALEŻY wystawiać na działanie lub używać komputera w pobliżu płynów, na deszczu lub wilgoci. NIE NALEŻY używać modemu podczas burz z wyładowaniami elektrycznymi.
- Aby zapobiec przegrzaniu systemu NIE NALEŻY zakrywać szczelin produktu.
- NIE NALEŻY przykrywać szczelin wentylacyjnych komputera desktop PC, aby zapobiec przegrzaniu systemu.
- Jeśli uszkodzony został zasilacz nie należy próbować naprawiać go samemu. Należy skontaktować się z wykwalifikowanym technikiem serwisu lub ze sprzedawcą.
- Aby zapobiec porażeniu prądem elektrycznym, przed przeniesieniem systemu należy odłączyć kabel zasilający od gniazdka elektrycznego.

Romanian

CE statement

Declarație de conformitate UE simplificată
ASUSTek Computer Inc. declară că acest dispozitiv este în conformitate cu cerințele esențiale și cu alte prevederi relevante ale Directivei 2014/53/UE. Declarația de conformitate UE completă este disponibilă la adresa: https://www.asus.com/Networking/USBAC51/HelpDesk/.

Acest dispozitiv se încadrează în limitele de expunere la radiații UE stabilite pentru un mediu necontrolat. Acest echipament trebuie instalat și operat cu distanța minimă de 5 mm între radiator și corpul dvs.

Toate modulele de funcționare:

2.4GHz: 802.11b, 802.11g, 802.11n (HT20), 802.11n (HT40)

5GHz: 802.11a, 802.11n (HT20), 802.11n (HT40), 802.11ac (VHT20),802.11ac (VHT40),802.11ac (VHT80)

Frecvența, modul și puterea maximă transmisă în UE sunt enumerate mai jos:

2412-2472MHz (802.11g 6 Mbps): 19.51 dBm

5180-5240MHz (802.11n HT40 MCS0): 22.73 dBm

5260-5320MHz (802.11ac VHT80 MCS0): 19.84 dBm

5500-5700MHz (802.11ac VHT80 MCS0): 19.93 dBm

Dispozitivul este restricționat doar la utilizarea în interior în cazul operării în intervalul de frecvență cuprins între 5.150 și 5.350 MHz.

Safety Notices

- Utilizați PC-ul desktop în medii cu temperatura ambiantă cuprinsă între 0 °C (32 °F) și 40 °C (104 °F).
- Consultați eticheta de pe partea de jos a produsului pentru a vă asigura că adaptorul dvs. este conform.
- NU așezați produsul pe suprafețe de lucru neregulate sau instabile. În cazul în care carcasa s-a deteriorat, solicitați operații de service.
- NU plasați și nu scăpați obiecte pe partea de sus a produsului și nu introduceți obiecte externe în produs.
- NU expuneți PC-ul desktop la lichide, la ploaie sau la umezeală. NU utilizați PC-ul desktop în timpurl furtunilor cu descărcări electrice.
- NU acoperiți orificiile de ventilare de pe produs. În caz contrar, este posibil ca sistemul să se supraîncălzească.
- NU utilizați cabluri de alimentare, accesorii sau echipamente periferice deteriorate.
- Dacă sursa de alimentare se defectează, nu încercați să o reparați singur. Contactați un tehnician de service calificat sau distribuitorul local.
- Pentru a preveni pericolul de electrocutare, deconectați cablul de alimentare de la priza electrică înainte de reamplasarea sistemului.

Portuguese

CE statement

Declaração de conformidade simplificada da UE
A ASUSTek Computer Inc. declara que este dispositivo está em conformidade com os requisitos essenciais e outras disposições relevantes da Diretiva 2014/53/CE. O texto integral da declaração de conformidade da UE está disponível em https://www.asus.com/Networking/USBAC51/HelpDesk/.

Este equipamento cumpre os limites de exposição à radiação estabelecidos pela UE para um ambiente não controlado. Este equipamento deve ser instalado e utilizado a uma distância mínima de 5 mm entre o transmissor e o seu corpo.

Todos os modos operacionais:

2.4GHz: 802.11b, 802.11g, 802.11n (HT20), 802.11n (HT40)

5GHz: 802.11a, 802.11n (HT20), 802.11n (HT40), 802.11ac (VHT20),802.11ac (VHT40),802.11ac (VHT80)

A frequência, o modo e a potência máxima na UE são apresentados abaixo:

2412-2472MHz (802.11g 6 Mbps): 19.51 dBm

5180-5240MHz (802.11n HT40 MCS0): 22.73 dBm

5260-5320MHz (802.11ac VHT80 MCS0): 19.84 dBm

5500-5700MHz (802.11ac VHT80 MCS0): 19.93 dBm

Este dispositivo está restrito a utilização no interior quando utilizado na banda de frequências 5.150 a 5.350 MHz.

Safety Notices

- Utilize este equipamento em ambientes com temperaturas entre 0°C (32°F) e 40°C (104°F).
- Verifique a etiqueta relativa à tensão na parte inferior do seu dispositivo e assegure-se de que o seu transformador corresponde a essa tensão.
- NÃO coloque o computador em superfícies irregulares ou instáveis. Envie para reparação se a caixa se encontrar danificada.
- NÃO coloque nem deixe cair objetos em cima do aparelho e não introduza quaisquer objetos estranhos no produto.



French

• NÃO exponha o equipamento nem o utilize próximo de líquidos, chuva ou humidade. NÃO utilize o modem durante tempestades eléctricas.

- NÃO tape os orifícios de ventilação do produto para impedir o sobreaquecimento do sistema.
- NÃO utilize cabos de alimentação, acessórios ou outros periféricos danificados.
- Se a fonte de alimentação estiver avariada, não tente repará-la por si próprio. Contacte um técnico qualificado ou o seu revendedor.
- Para evitar o risco de choque eléctrico, desligue o cabo de alimentação da tomada eléctrica antes de deslocar o sistema.

French

French

French

French

CE statement

Déclaration simplifiée de conformité de l'UE

ASUSTek Computer Inc. déclare par la présente que cet appareil est conforme aux critères essentiels et autres clauses pertinentes de la directive 2014/53/UE. La déclaration de conformité de l'UE peut être téléchargée à partir du site internet suivant: https://www.asus.com/Networking/USBAC51/HelpDesk/.

Cet appareil a été testé et s'est avéré conforme aux limites établies par l'UE en terme d'exposition aux radiations dans un environnement non contrôlé. Cet équipement doit être installé et utilisé avec un minimum de 5 mm de distance entre la source de rayonnement et votre corps.

Tous les modes de fonctionnement:

2.4GHz: 802.11b, 802.11g, 802.11n (HT20), 802.11n (HT40)

5GHz: 802.11a, 802.11n (HT20), 802.11n (HT40), 802.11ac (VHT20),802.11ac (VHT40),802.11ac (VHT80)

La fréquence, le mode et la puissance maximale transmise de l'UE sont listés ci-dessous:

2412-2472MHz (802.11g 6 Mbps): 19.51 dBm

5180-5240MHz (802.11n HT40 MCS0): 22.73 dBm

5260-5320MHz (802.11ac VHT80 MCS0): 19.84 dBm

5500-5700MHz (802.11ac VHT80 MCS0): 19.93 dBm

Cet appareil est restreint à une utilisation en intérieur lors d'un fonctionnement dans la plage de fréquence de 5150 à 5350 MHz.

Safety Notices

- Utilisez ce produit dans un environnement dont la température ambiante est comprise entre 0°C (32°F) et 40°C (104°F).
- Référez-vous à l'étiquette située au dessous du produit pour vérifier que l'adaptateur secteur répond aux exigences de tension.
- NE PAS placer sur une surface irrégulière ou instable. Contactez le service après-vente si le châssis a été endommagé.
- NE PAS placer, faire tomber ou insérer d'objets sur/dans le produit.
- NE PAS exposer l'appareil à la pluie ou à l'humidité, tenez-le à distance des liquides. NE PAS utiliser le modem lors d'un orage.
- NE PAS bloquer les ouvertures destinées à la ventilation du système pour éviter que celui-ci ne surchauffe.
- NE PAS utiliser de cordons d'alimentation, d'accessoires ou autres périphériques endommagés.
- Si l'adaptateur est endommagé, n'essayez pas de le réparer vous-même. Contactez un technicien électrique qualifié ou votre revendeur.
- Pour éviter tout risque de choc électrique, débranchez le câble d'alimentation de la prise électrique avant de toucher au système.

Finnish

CE statement

Yksinkertaistettu EU-vaatimustenmukaisuusvakuutus

ASUSTek Computer Inc. vakuuttaa täten, että tämä laite on 2014/53/EU-direktiivin olennaisten vaatimusten ja muiden asiaan kuuluvien lisäysten mukainen. Koko EU-vaatimustenmukaisuusvakuutuksen teksti on nähtävissä osoitteessa https://www.asus.com/Networking/USBAC51/HelpDesk/.

Tämä laite täyttää EU-säteilyrajoitukset, jotka on asetettu hallitsemattomaan ympäristöön. Tämä laitteisto tulee asentaa ja sitä tulee käyttää siten, että säteilijän ja kehosi välinen etäisyys on vähintään 5 mm.

Kaikki käyttötilat:

2.4GHz: 802.11b, 802.11g, 802.11n (HT20), 802.11n (HT40)

5GHz: 802.11a, 802.11n (HT20), 802.11n (HT40), 802.11ac (VHT20),802.11ac (VHT40),802.11ac (VHT80)

Taajuus, tila maksimi lähetetty teho EU:ssa on listattu alla:

2412-2472MHz (802.11g 6 Mbps): 19.51 dBm

5180-5240MHz (802.11n HT40 MCS0): 22.73 dBm

5260-5320MHz (802.11ac VHT80 MCS0): 19.84 dBm

5500-5700MHz (802.11ac VHT80 MCS0): 19.93 dBm

Tämän laitteen käyttö on rajoitettu sisätiloihin 5 150 - 5 350 MHzin-taajuusalueella.

Safety Notices

- Käytä tätä tuotetta ympäristöissä, joissa ympäristölämpötila on välillä 0°C (32°F) ja 40°C (104°F).
- Varmista tuotteen pohjassa sijaitsevista arvokilvestä vastaako verkkolaite tätä nimellisarvoa.
- ÄLÄ aseta epätasaisille tai epävakaile pinnoille. Ota yhteys huoltoon, jos kotelo on vahingoittunut.
- ÄLÄ aseta tai pudota esineitä laitteen päälle äläkä anna minkään vieraiden esineiden joutua tuotteen sisään.
- ÄLÄ altista nesteille, sateelle tai kosteudelle tai käytä niiden lähellä. ÄLÄ käytä modeemia ukkosmyrskyn aikana.
- ÄLÄ peitä tuotteen tuuletusaukkoja estääksesi tuotteen ylikuumenemisen.
- ÄLÄ käytä vahingoittuneita virtajohtoja, lisävarusteita tai muita oheslaitteita.
- Jos virtalähde on rikkoutunut, älä itse yritä sitä korjata. Ota yhteys ammattimaiseen huoltohenkilöön tai jälleenmyyjäisi.
- Estääksesi sähköiskun vaaran irrota virtakaapeli pistorasiasta ennen järjestelmän paikan muuttamista.

German

German

German

German

CE statement

Vereinfachte EU-Konformitätserklärung

ASUSTek Computer Inc. erklärt hiermit, dass dieses Gerät mit den grundlegenden Anforderungen und anderen relevanten Bestimmungen der Richtlinie 2014/53/EU übereinstimmt. Der gesamte Text der EU-Konformitätserklärung ist verfügbar unter: https://www.asus.com/Networking/USBAC51/HelpDesk/.

Dieses Gerät erfüllt die EU-Strahlenbelastungsgrenzwerte, die für ein unbeaufsichtigtes Umfeld festgelegt wurden. Dieses Gerät sollte mit einem Mindestabstand von 5 mm zwischen der Strahlungsquelle und Ihrem Körper installiert und betrieben werden.

Alle Betriebsarten:

2.4GHz: 802.11b, 802.11g, 802.11n (HT20), 802.11n (HT40)



Finnish

Finnish

Finnish

Finnish

Finnish

Finnish

Finnish

Finnish

Finnish

Finnish

Finnish

Finnish

Finnish

Finnish

Finnish

Finnish

Finnish

Finnish

Finnish

Finnish

Finnish

Finnish

Finnish

Finnish

Finnish

Finnish

Finnish

Finnish

Finnish

Finnish

Finnish

Finnish

Finnish

Finnish

Finnish

Finnish

Finnish

Finnish

Finnish

Finnish

Finnish

Finnish

Finnish

Finnish

Finnish

Finnish

Finnish

Finnish

Finnish

Finnish

Finnish

Finnish

Finnish

Finnish

Finnish

Finnish

Finnish

Finnish

Finnish

Finnish

Finnish

Finnish

Finnish

Finnish

Finnish

Finnish

Finnish

Finnish

Finnish

Finnish

Finnish

Finnish

Finnish

Finnish

Finnish



Safety Notices

- Använd denna produkt i en miljö med en omgivande temperatur mellan 0°C(32°F) och 40°C(104°F).
- Läs märketiketten på produktens undersida, och kontrollera att strömadaptern uppfyller dessa märkdata.
- Placera den INTE på en ojämn eller instabil arbetsyta. Sök service om höljet har skadats.
- Placera och tappa INTE föremål ovanpå, och skjut inte in främmande föremål i produkten.
- Utsätt den INTE för eller använd i närheten av vätskor, i regn eller fukt. ANVÄND INTE modemet under åskväder.
- Täck INTE över ventilationsöppningarna på produkten för att förhindra att systemet överhettas.
- ANVÄND INTE skadade strömsladdar, tillbehör eller annan kringutrustning.
- Om strömförsörjningen avbryts försök inte att laga det själv. Kontakta en kvalificerad servicetekniker eller din återförsäljare.
- För att förhindra elektriska stötar, koppla bort elkabeln från elnätet innan systemet flyttas.

Spanish

CE statement

Declaración de conformidad simplificada para la UE

Por el presente documento, ASUSTek Computer Inc. declara que este dispositivo cumple con los requisitos esenciales y otras disposiciones pertinentes de la Directiva 2014/53/UE. En https://www.asus.com/Networking/USBAC51/HelpDesk/ está disponible el texto completo de la declaración de conformidad para la UE. El equipo cumple los límites de exposición de radiación de la UE fijados para un entorno no controlado. Este equipo se debe instalar y utilizar a una distancia mínima de 5 mm entre el dispositivo radiante y su cuerpo.

Todos los modos operativos:

2.4GHz: 802.11b, 802.11g, 802.11n (HT20), 802.11n (HT40)

5GHz: 802.11a, 802.11n (HT20), 802.11n (HT40), 802.11ac (VHT20),802.11ac (VHT40),802.11ac (VHT80)

A continuación figuran la frecuencia, el modo y la potencia máxima de transmisión en la UE:

2412-2472MHz (802.11g 6 Mbps): 19.51 dBm; 5180-5240MHz (802.11n HT40 MCS0): 22.73 dBm

5260-5320MHz (802.11ac VHT80 MCS0): 19.84 dBm

5500-5700MHz (802.11ac VHT80 MCS0): 19.93 dBm

El dispositivo solamente debe utilizarse en interiores cuando opera en el intervalo de frecuencias de 5150 a 5350 MHz.

Safety Notices

- Use este producto en entornos sometidos a una temperatura ambiente comprendida entre 0 °C (32 °F) y 40 °C (104 °F).
- Consulte la etiqueta de valores nominales situada en la parte inferior del producto y asegúrese de que su adaptador de alimentación cumple con dichos valores.
- NO coloque el equipo sobre una superficie irregular o inestable. Solicite asistencia técnica si la carcasa resulta dañada.
- NO coloque ni deje caer objetos en la parte superior del producto y no introduzca objetos extraños dentro de él.
- NO exponga el equipo a líquidos, lluvia o humedad, ni lo use cerca de ninguno de tales elementos. NO use el módem durante tormentas eléctricas.
- Para evitar que el sistema se sobrecaliente, no cubra las ranuras de ventilación del producto.
- NO cubra los orificios de ventilación del equipo de sobremesa para evitar que el sistema se caliente en exceso.
- No intente reparar la fuente de alimentación personalmente si se avería. Póngase en contacto con un técnico de mantenimiento autorizado o con su distribuidor.
- A fin de evitar posibles descargas eléctricas, desconecte el cable de alimentación de la toma de suministro eléctrico antes de cambiar la posición del sistema.

Slovanian

CE statement

Poenostavljena izjava o skladnosti EU

ASUSTek Computer Inc. izjavlja, da je ta naprava skladna s temeljnimi zahtevami in drugimi relevantnimi določili Direktive 2014/53/EU. Celotno besedilo izjave EU o skladnosti je na voljo na spletnem mestu https://www.asus.com/Networking/USBAC51/HelpDesk/.

Izjava o skladnosti za Direktivo o okoljsko primerni zasnovi 2009/125/ES

Oprema je v skladu z omejitvami EU o izpostavljenosti sevanju za nenadzorovano okolje. Opremo namestite in z njo upravljajte na najmanjši oddaljenosti 5 mm med radiatorjem in telesom.

Vsi načini delovanja:

2.4GHz: 802.11b, 802.11g, 802.11n (HT20), 802.11n (HT40)

5GHz: 802.11a, 802.11n (HT20), 802.11n (HT40), 802.11ac (VHT20),802.11ac (VHT40),802.11ac (VHT80)

Frekvenca, način in maksimalna oddajna moč v EU so navedene v nadaljevanju:

2412-2472MHz (802.11g 6 Mbps): 19.51 dBm

5180-5240MHz (802.11n HT40 MCS0): 22.73 dBm

5260-5320MHz (802.11ac VHT80 MCS0): 19.84 dBm

5500-5700MHz (802.11ac VHT80 MCS0): 19.93 dBm

Naprava se v notranjih prostorih lahko uporablja samo, če deluje v frekvenčnem območju od 5150 MHz do 5350 MHz.

Safety Notices

- Izdelek uporabljajte v okoljih s temperaturo med 0 °C in 40 °C.
- Preberite oznake na nalepki na dnu vašega izdelka in se prepričajte, da je napajalnik skladen z zahtevami, navedenimi na nalepki.
- Naprave NE postavljajte na neravne ali nestabilne delovne površine. V primeru poškodbe ohišja poiščite pomoč servisa.
- Na napravo NE SMETE postavljati ali nanjo spuščati predmetov oz. vanjo potiskati kakršnega koli tujka.
- Naprave NE izpostavljajte oz. uporabljajte v bližini tekočin, dežja ali vlage. Modema NE SMETE uporabljati med nevihtami.
- Prezračevalnih rež z izdelku NE SMETE pokriti zato, da se sistem ne pregreje.
- NE uporabljajte poškodovanih napajalnih kablov, dodatkov ali drugih zunanjih naprav.
- Če je napajalnik poškodovan, ga ne poskušajte popraviti sami. Stopite v stik z usposobljenim serviserm ali prodajalcem.
- Če želite preprečiti nevarnost električnega sunka, pred prestavljanjem sistema odklopite napajalni kabel iz električne vtičnice.

Slovakian

CE statement

Zjednodušené vyhlásenie o zhode ES

Spoločnosť ASUSTek Computer Inc. týmto vyhlasuje, že toto zariadenie je v zhode s hlavnými požiadavkami a ostatnými príslušnými ustanoveniami smernice 2014/53/EÚ. Celý text vyhlásenia o zhode ES nájdete na adrese https://www.asus.com/Networking/USBAC51/HelpDesk/.

Toto zariadenie vyhovuje európskym (EÚ) limitným hodnotám pre vystavenie žiareniu stanoveným pre nekontrolované prostredie. Toto zariadenie sa má inštalovať a prevádzkovať minimálne v 5 mm vzdialenosti medzi žiaricom a telom.

Všetky prevádzkové režimy:

2.4GHz: 802.11b, 802.11g, 802.11n (HT20), 802.11n (HT40)

5GHz: 802.11a, 802.11n (HT20), 802.11n (HT40), 802.11ac (VHT20),802.11ac (VHT40),802.11ac (VHT80)

Frekvenca, režim a maximálny prenosový výkon v EÚ sú uvedené nižšie:

2412-2472MHz (802.11g 6 Mbps): 19.51 dBm

5180-5240MHz (802.11n HT40 MCS0): 22.73 dBm

5260-5320MHz (802.11ac VHT80 MCS0): 19.84 dBm

5500-5700MHz (802.11ac VHT80 MCS0): 19.93 dBm

Používanie tohto zariadenia je obmedzené na používanie len v rámci frekvenčného rozsahu 5 150 až 5 350 MHz.

Safety Notices

- Tento výrobok používajte v prostrediach s okolitou teplotou od 0°C (32°F) do 40°C (104°F).
- Pozrite si typový štítok na spodnej strane zariadenia a uistite sa, že napájací adaptér vyhovuje tomuto menovitému výkonu.
- NEUMIESTŇUJTE na nerovné a nestabilné pracovné povrchy. V prípade poškodenia skrinky vyhladajte pomoc servisného strediska.
- Na hornú stranu zariadenia NEUMIESTŇUJTE ani NENECHÁVAJTE žiadne predmety a nekladajte doň žiadne cudzie predmety.
- NEVYSTAVUJTE ani nepoužívajte v blízkosti kvapalín, v daždi alebo vlhkom prostredí. NEPOUŽÍVAJTE modem počas búrkych výskytom bleskov.
- Vetracie otvory na zariadení NEZAKRÝVAJTE, aby sa neprehrievalo.
- NEPOUŽÍVAJTE káble, príslušenstvo alebo periférne zariadenia, ktoré sú poškodené.
- Keď je zdroj napájania poškodený, nepokúšajte sa ho sami opravovať. Obráťte sa na kompetentného servisného technika alebo svojho predajca.
- Pred premiestňovaním zariadenia odpojte sieťový kábel z elektrickej zásuvky, aby sa zabránilo riziku úrazu elektrickým prúdom.

Turkish

CE statement

Basitleştirilmiş AB Uygunluk Bildirimi

ASUSTek Computer Inc., bu aygıtın temel gereksinimlerle ve 2014/53/EU Yönergesinin diğer ilgili koşullarıyla uyumlu olduğunu bildirir. AB uygunluk bildiriminin tam metni https://www.asus.com/Networking/USBAC51/HelpDesk/ adresinde bulunabilir.

Bu donanım, kontrolsüz bir ortam için belirlenen AB radyasyona maruz kalma sınırlarıyla uyumludur. Bu donanım, sinyal vericisi ve vücudunuz arasında en az 5 mm mesafe olacak şekilde yerleştirilmeli ve çalıştırılmaldır.

Tüm işletim modları:

2.4GHz: 802.11b, 802.11g, 802.11n (HT20), 802.11n (HT40)

5GHz: 802.11a, 802.11n (HT20), 802.11n (HT40), 802.11ac (VHT20),802.11ac (VHT40),802.11ac (VHT80)

AB içinde frekans, mod ve iletilen en fazla güç aşağıda listelenmektedir:

2412-2472MHz (802.11g 6 Mbps): 19.51 dBm

5180-5240MHz (802.11n HT40 MCS0): 22.73 dBm

5260-5320MHz (802.11ac VHT80 MCS0): 19.84 dBm

5500-5700MHz (802.11ac VHT80 MCS0): 19.93 dBm

5150 - 5350 MHz frekans aralığında çalıştırılırken aygıtın kullanımı yalnızca iç mekâna sınırlıdır.



Safety Notices

- Bu ürünü ortam sıcaklığı 0°C (32°F) ve 35°C (95°F) arasındaki sıcaklıklarda kullanın.
- Ürününüzün altındaki derecelendirme etiketine başvurun ve güç adaptörünüzün bununla uyumlu olduğundan emin olun.
- Düğün veya sabit olmayan çalışma yüzeylerine YERLEŞTİRMEYİN. Kasa hasar görmüşse servise başvurun.
- Ürünün üzerine nesnelr koymayın veya düşürmeyin ve içine yabancı nesnelr itmeyin.
- Sivillara, yağmura ya da neme maruz BIRAKMAYIN veya bunların yanında KULLANMAYIN. Şimşekli fırtınalarda modemi KULLANMAYIN.
- Sistemim aşırı ısınmasını önlemek için üründeki havalandırma deliklerinin üzerini kapatmayın.
- Sistemim aşırı ısınmasını önlemek için masaüstü PC'nin üzerindeki hava deliklerini KAPATMAYIN.
- Güç kaynağı bozulmuşsa, tek başınıza onarmaya çalışmayın. Yetkili servis teknisyeniyle veya satıcınızla bağlantı kurun.
- Elektrik garpması riskini önlemek için, sistemim yerini değiştirmeden önce güç kablosunun elektrik prizi ile olan bağlantısını kesin.

Italian

CE statement

Dichiarazione di conformità UE semplificata

ASUSTek Computer Inc. con la presente dichiara che questo dispositivo è conforme ai requisiti essenziali e alle altre disposizioni pertinenti con la direttiva 2014/53/EU. Il testo completo della dichiarazione di conformità UE è disponibile all'indirizzo https://www.asus.com/Networking/USBAC51/HelpDesk/.

Questo apparecchio è conforme ai limiti UE, per l'esposizione a radiazioni, stabiliti per un ambiente non controllato. Questo apparecchio deve essere installato e utilizzato ad una distanza di almeno 5 mm dal corpo.

Tutte le modalità operative:

2.4GHz: 802.11b, 802.11g, 802.11n (HT20), 802.11n (HT40)

5GHz: 802.11a, 802.11n (HT20), 802.11n (HT40), 802.11ac (VHT20),802.11ac (VHT40),802.11ac (VHT80)

I valori di frequenza, modalità e massima potenza di trasmissione per l'UE sono elencati di seguito:

2412-2472MHz (802.11g 6 Mbps): 19.51 dBm

5180-5240MHz (802.11n HT40 MCS0): 22.73 dBm

5260-5320MHz (802.11ac VHT80 MCS0): 19.84 dBm

5500-5700MHz (802.11ac VHT80 MCS0): 19.93 dBm

L'utilizzo di questo dispositivo è limitato agli ambienti interni quando si sta utilizzando a banda di frequenze compresa tra i 5150 e i 5350 MHz.

Safety Notices

- Usa questo prodotto in ambienti la cui temperatura sia compresa tra 0°C(32°F) e 40°C(104°F).
- Consulta l'etichetta indicante la potenza posta sul fondo del prodotto e assicurati che l'adattatore di alimentazione sia compatibile con tali valori.
- Non collocare il dispositivo su superfici irregolari o instabili. Contatta il servizio clienti se lo chassis è stato danneggiato.
- NON riporre oggetti sopra il dispositivo e non infilare alcun oggetto all'interno del dispositivo.
- NON esporre a liquidi, pioggia o umidità. NON usare il modem durante i temporali.
- NON coprire le prese d'aria del prodotto per evitare che il sistema si surriscaldi.
- NON utilizzare cavi di alimentazione, accessori o periferiche danneggiate.
- Se l'adattatore è danneggiato non provare a ripararlo. Contatta un tecnico qualificato o il rivenditore.
- Per prevenire il rischio di scosse elettriche scollega il cavo di alimentazione dalla presa di corrente prima di spostare il sistema.

Dutch

CE statement

Vereenvoudigde EU-conformiteitsverklaring

ASUSTek Computer Inc. verklaart dat dit apparaat in overeenstemming is met de essentiële vereisten en andere relevante bepalingen van Richtlijn 2014/53/EU. Volledige tekst EU-conformiteitsverklaring is beschikbaar op https://www.asus.com/Networking/USBAC51/HelpDesk/.

Deze apparatuur voldoet aan EU-limieten voor blootstelling aan straling als uiteengezet voor een onbeheerste omgeving. Deze apparatuur moet worden geïnstalleerd en bediend met een minimumafstand van 5 mm tussen de radiator en uw lichaam.

Alle bedrijfsmodi:

2.4GHz: 802.11b, 802.11g, 802.11n (HT20), 802.11n (HT40)

5GHz: 802.11a, 802.11n (HT20), 802.11n (HT40), 802.11ac (VHT20),802.11ac (VHT40),802.11ac (VHT80)

De frequentie, modus en het afgegeven maximumvermogen in de EU wordt hieronder vermeld:

2412-2472MHz (802.11g 6 Mbps): 19.51 dBm

5180-5240MHz (802.11n HT40 MCS0): 22.73 dBm

5260-5320MHz (802.11ac VHT80 MCS0): 19.84 dBm

5500-5700MHz (802.11ac VHT80 MCS0): 19.93 dBm

Het apparaat is beperkt tot alleen binnengebruik bij werking in het frequentiebereik van 5150 tot 5350 MHz.

Safety Notices

- Gebruik dit product in omgevingen met omgevingstemperaturen tussen 0°C (32°F) en 40°C (104°F).
- Raadpleeg het typeplaatje op de onderkant van uw product en controleer of uw voedingsadapter voldoet aan dit type.
- NIET op onegale of instabiele werkoppervlakken plaatsen. Als de behuizing beschadigd is geraakt, dient u hulp bij onderhoud hulp te zoeken.
- Plaats of laat GEEN objecten vallen bovenop het product en schuif geen vreemde objecten in het product.
- NIET in de buurt van vloeistoffen, regen of vocht blootstellen of gebruiken. NIET de modem tijdens onweer gebruiken.
- Dek de uitlaatopeningen van het product NIET AF zodat het systeem niet oververhit raakt.
- NIET de ventilatieopeningen van de Desktop PC afdekken, om oververhitting van het systeem te voorkomen.
- Als de netvoeding is beschadigd, mag u niet proberen het zelf te repareren. Neem contact op met een bevoegde servicemonteur of uw handelaar.
- Verwijder, voordat u het systeem verplaatst, de stroomkabel uit de contactdoos om elektrische schok te vermijden.

Croatian

CE statement

Pojednostavljena EU Izjava o skladnosti

ASUSTek Computer Inc. ovime izjavljuje da je uređaj sukladan s osnovnim zahtjevima i ostalim važnim odredbama direktive 2014/53/EU. Cijeli tekst EU izjave o skladnosti dostupan je na https://www.asus.com/Networking/USBAC51/HelpDesk/.

Ova oprema skladna je EU ograničenjima o izloženosti zračenju u nekontroliranom okruženju. Ovaj uređaj se mora postaviti i koristiti na minimalnoj udaljenosti od 5 mm između radijatora i vašeg tijela.

Svi načini rada:

2.4GHz: 802.11b, 802.11g, 802.11n (HT20), 802.11n (HT40)

5GHz: 802.11a, 802.11n (HT20), 802.11n (HT40), 802.11ac (VHT20),802.11ac (VHT40),802.11ac (VHT80)

U nastavku su navedeni frekvencija, način rada i maksimalna emitirana snaga u EU:

2412-2472MHz (802.11g 6 Mbps): 19.51 dBm

5180-5240MHz (802.11n HT40 MCS0): 22.73 dBm

5260-5320MHz (802.11ac VHT80 MCS0): 19.84 dBm

5500-5700MHz (802.11ac VHT80 MCS0): 19.93 dBm

Sadržaj je ograničen na uporabu u zatvorenim prostorima samo pri radu u frekvencijskom rasponu od 5150 do 5350 MHz.

Safety Notices

- Ovaj proizvod koristite u okruženjima s temperaturom okruženja između 0 °C (32 °F) i 40 °C (104 °F).
- Pogledajte nazivnu oznaku na donjem dijelu proizvoda kako biste provjerili je li adapter sukladan.
- NE postavljajte uređaj na neravne i nestabilne radne površine. U slučaju oštećenja kućišta, zatražite pomoć servisa.
- NEMOJTE postavljati ili spuštati predmete na gornji dio uređaja i nemojte umetati strane predmete u proizvod.
- NE izlažite i ne upotrebljavajte uređaj u blizini tekućina, kiše ili vlage. NEMOJTE koristiti modem tijekom električne oluje.
- NEMOJTE prekrivati ​​otvore na proizvodu kako ne biste uzrokovali pregrijavanje sustava.
- Nemojte koristiti oštećene kabele za napajanje, dodatnu opremu i ostale vanjske uređaje.
- Ako je adapter oštećen, nemojte ga popravljati sami. Obratite se kvalificiranom servisnom tehničaru ili dobavljaču.
- Kako biste spriječili opasnost od električnog udara, iskopčajte kabel iz električne utičnice prije premještanja sustava.



| |
|--|
| <p>Dual-band Wireless-AC600 USB Adapter Model: USB-AC51 ASUSTek Computer Inc. 4F, No. 150, Li-Te Rd., Peitou, Taipei 112, Taiwan</p>     |
|--|



| 單元 | 限用物質及其化學符號 | | | | | |
|--|------------|--------|--------|-------------------------|-------------|----------------|
| | 鉛 (Pb) | 汞 (Hg) | 鎘 (Cd) | 六價鉻 (Cr ⁶⁺) | 多溴聯苯 (PBB) | 多溴二苯 醚 (PBDE) |
| 印刷電路板及電子組件 | - | ○ | ○ | ○ | ○ | ○ |
| 結構組件（金屬 / 塑膠） | ○ | ○ | ○ | ○ | ○ | ○ |
| 其他組件（如基座/ 天線） | ○ | ○ | ○ | ○ | ○ | ○ |
| 其他及其配件（如連接線） | ○ | ○ | ○ | ○ | ○ | ○ |
| 備考1. “○” 係指該項限用物質之百分比含量未超出百分比含量基準值。 備考2. “-” 係指該項限用物質為排除項目。 | | | | | | |