

# LCD TV

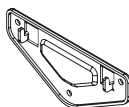
## QUICK SETUP GUIDE

### The Supplied Accessories

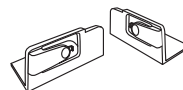
- Remote Control & Batteries (AAA x 2)
- Owner's Instructions
- Cleaning Cloth
- Power Cord



(M4 X L16: 3EA)



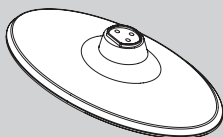
• Wall Mount kit



• Decoration Cover (LE19C450)

• Stand Screws (LE22C450)

See separate guide for installing the stand.



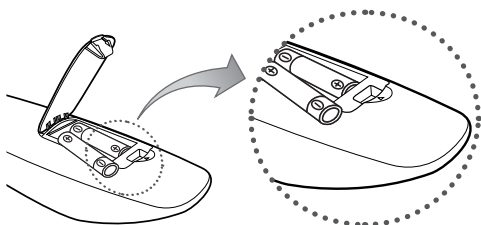
• Stand (1EA) (LE22C450)



(M4 X L16)

• Screws (3EA) (LE22C450)

### Installing Batteries in the Remote Control



#### NOTE

- Use the remote control within 23 feet from the TV.
- Bright light may affect the performance of the remote control. Avoid using nearby special fluorescent light or neon signs.
- The colour and shape may vary depending on the model.

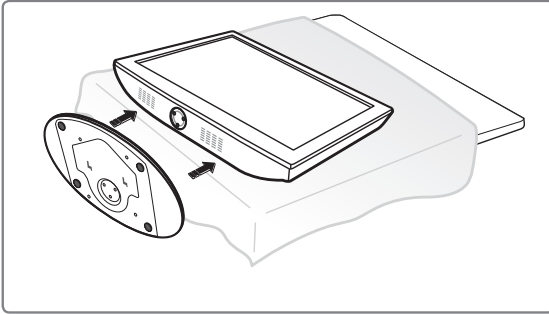


BN68-02685A-00

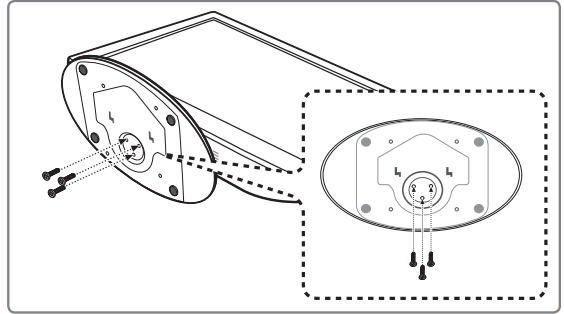
## Installing the Stand

<LE22C450>

Step 1

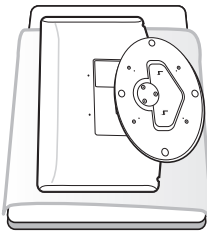


Step 2

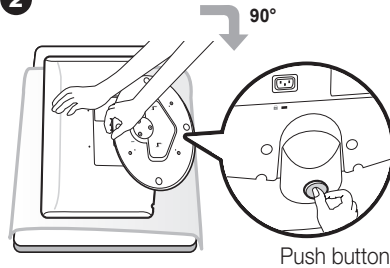


<LE19C450>

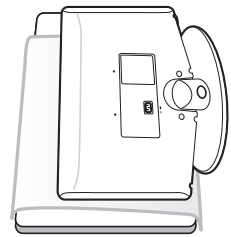
1



2



3

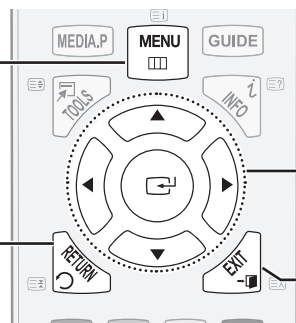


- ✎ Make sure to distinguish between the front and rear of the Stand when attaching it to the TV.
- ✎ Make sure that at least two persons lift and move the LCD TV.
- ✎ Lay the product down, with the screen facing up and fasten the screws.

## Using the remote control buttons

**MENU Button**  
Displays the favourites channel list.

**RETURN Button**  
Returns to the previous menu

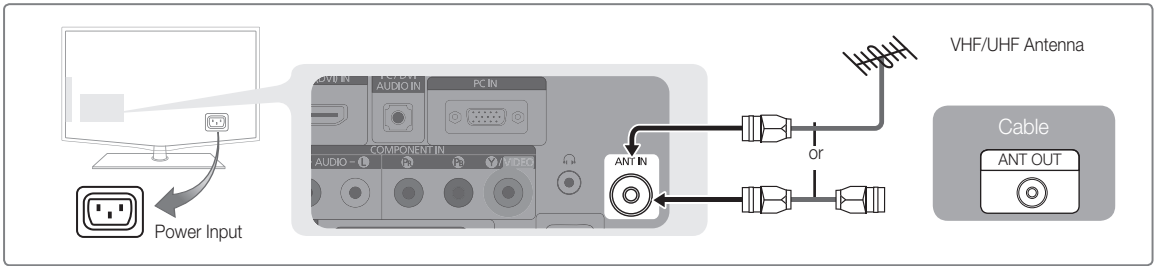


**ENTER / Direction Button**  
Move the cursor and select an item.  
Select the currently selected item.  
Confirm the setting.

**EXIT Button**  
Exit the on-screen menu

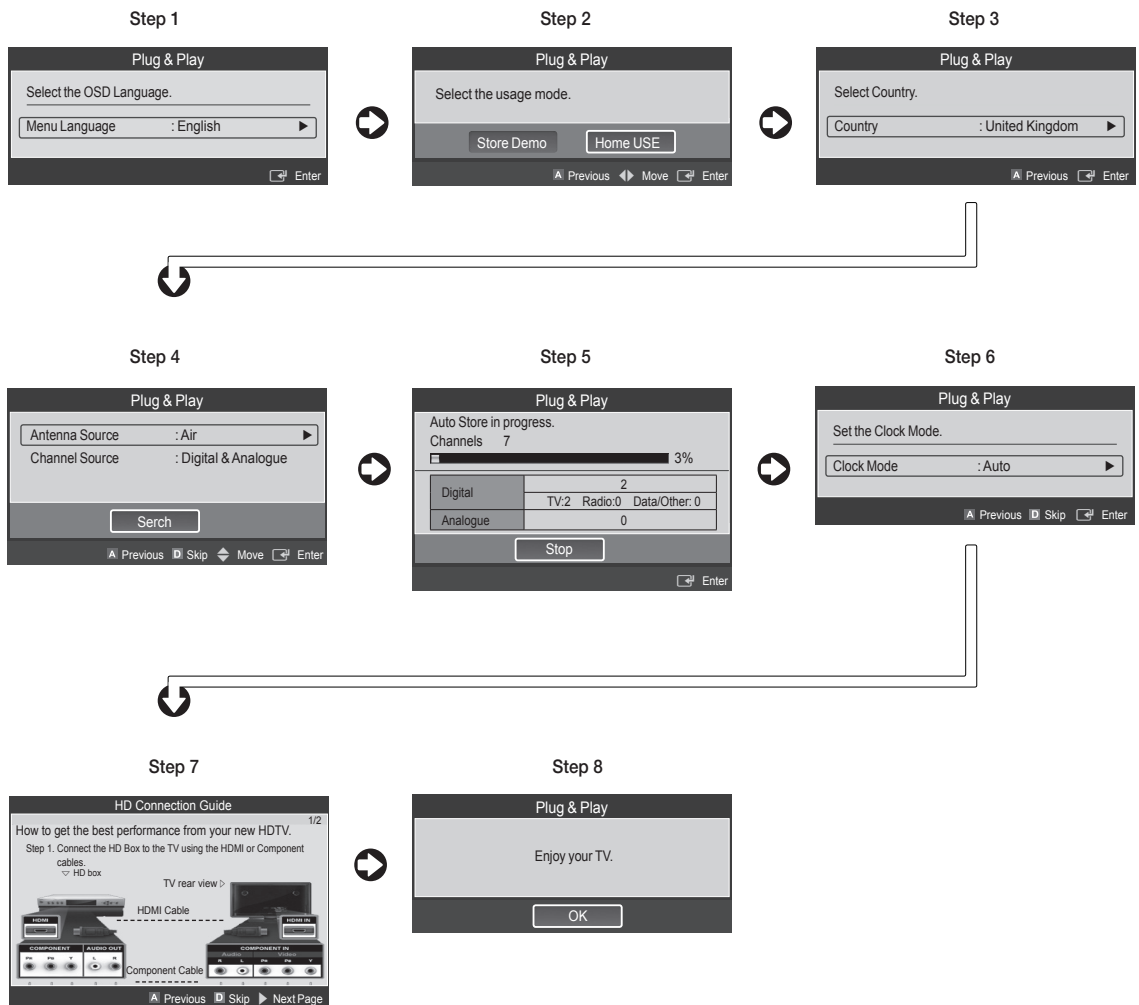
## Plug & Play

When the TV is initially powered on, basic settings proceed automatically and subsequently. If you want to reset this feature, press the **MENU** button to display menu. You can set the Plug & Play by selecting **Setup** → **Plug & Play**.



On the screen, you can set as follows.

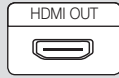
The each step may vary depending on the Antenna source.



★ HD connection

**Using an HDMI Cable**

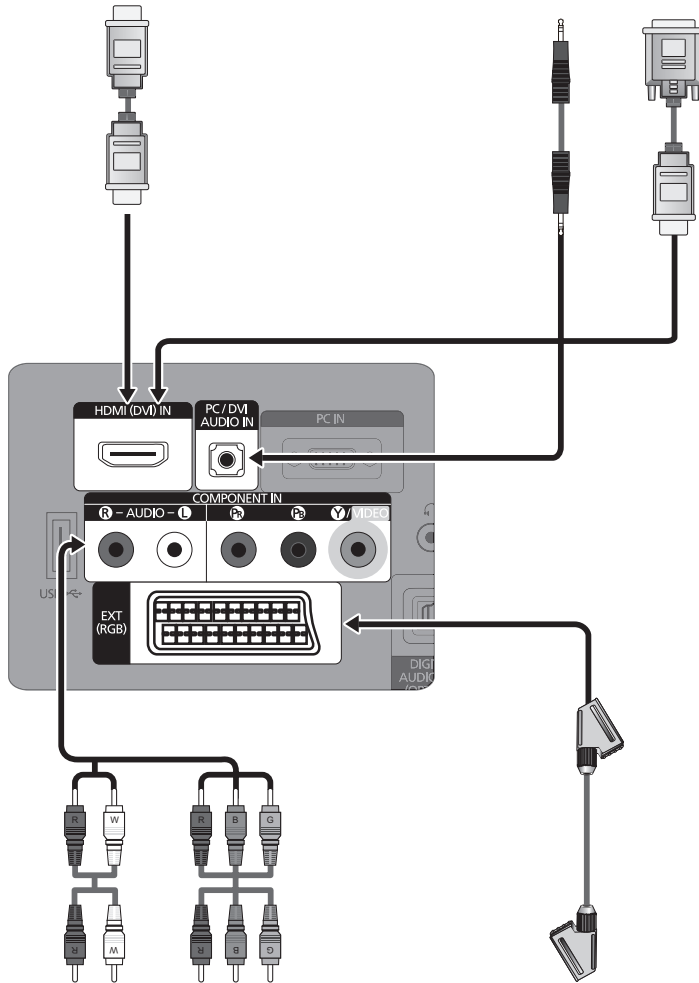
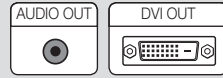
DVD / Blu-Ray player / HD Cable Box  
/ HD Satellite receiver (STB)



★ HD connection

**Using a DVI Cable**

DVD / Blu-Ray player / Cable Box  
/ Satellite receiver (STB)



Component connection

**Using a Component Cable**

DVD / Blu-Ray player / Cable  
Box / Satellite receiver



**Using a Scart Cable**

VCR / DVD

