

# MP Series

MP Compact4 Mark II ■ ■ ■  
MP Compact4 Mobile Mark II ■ ■ ■



datamax • o'neil  
right by our customers.



# Contents ■ ■ ■

|                                       |    |
|---------------------------------------|----|
| Introduction .....                    | 1  |
| Markets and Applications .....        | 2  |
| Tour the Printers .....               | 7  |
| Selling Points .....                  | 8  |
| Competitive Overview .....            | 12 |
| Technical Specifications .....        | 14 |
| Options/Accessories .....             | 15 |
| Base Models/Options/Accessories ..... | 17 |
| Consumables .....                     | 18 |
| Software .....                        | 19 |
| Frequently Asked Questions .....      | 21 |
| Repair/Warranty .....                 | 25 |
| Agency Approvals .....                | 27 |
| Ordering Printers and Options .....   | 28 |

*Brand and product names are trademarks, service marks, registered trademarks, or registered service marks of their respective companies.*

## About Datamax-O'Neil

Datamax-O'Neil is a trusted global provider of stationary and portable label and receipt printing solution products that enable manufacturing and supply markets to capture the benefits of automated product identification and automated legal and financial transactions. Datamax-O'Neil is the barcode and mobile printing business group of Dover Corporation's Product Identification Group (PIDG), a global platform entity with products and services covering all the leading marking technologies and applications. The company's products address a wide variety of applications, including those in the industrial, healthcare, retail, automotive and ticketing market sectors. Datamax-O'Neil is headquartered in Orlando, Florida, and maintains key facilities in California, Illinois, and France, as well as sales and technical support offices around the world.

## Product Introduction

The MP family of compact, easy-to-use and rugged printers creates a positive working experience in even the most challenging environments. Their versatility and deployment flexibility have made them the ideal choice for diverse applications such as warehousing, transportation and logistics, healthcare and retail. The MP family is comprised of two printer series – the Compact4 *Mark II* and Nova.

### Compact4 series:

- small footprint and easy-to-use controls
- rugged hardshell metal exterior
- versatile mounting configurations
- vibration/shock isolation system perfect for the most challenging environments, including the warehouse and factory floor, as well as transportation, mobile stations and forklift operations.
- high performance and superior print quality necessary for laboratory and medical applications.

### Nova series:

- compact printers available in 4" and 6" widths
- designed for customers who require high speed, high capacity label rolls, reliability, and superior ease-of-use
- all-metal casing ideal for harsh industrial environments
- quiet printing ideal for office or hospital use

This Product Guide focuses only on the Compact4 printers series. A similar guide is available for the Nova printer series.

## Product History

The MP Series printers were originally designed and manufactured by MarkPoint, a Swedish company specializing in small footprint, rugged and reliable printers with a focus on simplifying the human experience. When MarkPoint was acquired by Imaje, a Dover company like Datamax-O'Neil, the MP products were transferred to Datamax-O'Neil to take advantage of the company's long experience with thermal printing in the Auto-ID industry. Datamax-O'Neil now manages every aspect of the MP printer series, including development, production, support, sales and marketing activities.

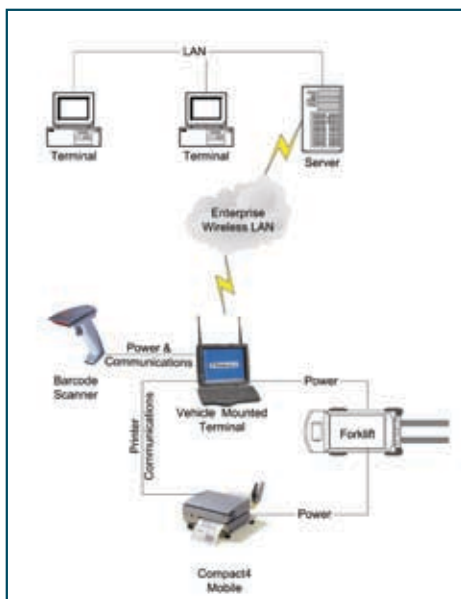
The Compact4 *Mark II* printers have proven to be very successful in Europe and Datamax-O'Neil is committed to repeating that success worldwide. Below are just a few applications where the Compact4 *Mark II* printers have performed reliably for years.

### Distribution/Warehousing - Printing from the Forklift

Companies that move a large volume of products and palletize their shipments have realized a substantial increase in efficiency by printing from Compact4 Mobile printers mounted directly on their forklifts. Reduced errors, quicker processing, and lower overhead are benefits of on-vehicle label printing.

In many warehouses, the staging area for palletizing is often a centralized location where packages are consolidated, prepared for shipment, and shipping labels are applied. Sounds simple, but moving the complete pallet to a centralized labeling location can increase the chance for human error, primarily because you have to select and apply the correct label to the correct pallet. By moving away from the centralized concept of palletizing and printing, and moving to a mobile solution (a forklift equipped with a networked computer, label printer, and scanner), Compact4 Mobile users have realized significant time and fuel savings.

The schematic below illustrates a typical application setup with the Compact4 Mobile printer mounted on the forklift, a ruggedized computer networked via a wireless card, and a hand held scanner. All the hardware components including the printer are powered from the forklift.



### Benefits of Printing from the Forklift

Implementing a forklift system with a Compact4 Mobile printer offers many benefits including:

- **Error Reduction** – Printing on demand and on location means you no longer have to move to a centralized printing station where the possibility of selecting and applying the incorrect shipping labels greatly increases.
- **Time Savings** – Reduces the time needed to move to and from a centralized printing location to retrieve labels.
- **Reduce Waste** – Reducing the amount of travel to a centralized printing location saves time and fuel.

### Distribution/ Warehousing - Printing from the Picking Cart



A cart picking system allows the operator to work on multiple orders that are much smaller than those requiring a forklift. It is also used for inventory purposes to re-mark items and generate shelf locators. Incorporating a Compact4 Mobile printer into this system has allowed users to realize increased efficiency and a reduction in labeling errors. Having a mobile printing system enables the operator to pick and package orders while moving down the aisle without going back to a central location to print documents. The Compact4 Mobile is used to re-mark items and print special instructions, package contents, invoices, and shipping labels.

#### Benefits of Printing from the Picking Cart

Implementing a cart system has similar benefits to the forklift system, but on a wider array of applications across numerous industries. Benefits include:

- **Time Savings** – Reduces the time required to move to and from a centralized printing location.
- **Error Reduction** – Printing on demand and on location means you no longer have to move to a centralized printing station where the possibility of selecting and applying the incorrect shipping labels greatly increases.
- **Reduce Waste** - Reducing the amount of travel to a centralized printing location saves time and fuel.
- **Additional Picking Cart Applications**
  - Healthcare: Hospitals use carts for collecting specimens and labeling at patient's bedside.
  - Retail: Stores use carts for generating shelf tags and item labels on the floor.
  - Manufacturing: A power cart can be easily moved throughout the line to provide labeling at different locations or when an additional printing station is required.



### Transport/Logistics

The Compact4 *Mark II* printers have been used successfully in shipping and mailing applications due to their small size, rugged reliability, and ease of use. These printers are able to print labels and tags, and have options to support a semi-automated process, making them ideal for transport and logistics applications. In addition, the printers offer the mobility and versatility that cannot be found in traditional desktop printers.

## Healthcare - Hospitals

Recent government mandates require hospitals to meet stringent standards for admissions and patient identification, as well as laboratory and pharmaceutical management. Hospitals are using the Compact4 *Mark II* printers to meet these requirements as well as improve efficiencies. Their small size, quiet printing, long term reliability and ease of use make them the perfect choice for hospitals. The Compact4 *Mark II* prints high quality receipts and labels from 1½ inches to 4 inches wide with models that print 200dpi or 300dpi.

### Records Management

The Compact4 *Mark II*'s small size and exceptional print quality make it good choice for record management. Every patient record needs accurate tracking using a barcode and human readable text. This drastically reduces the amount of errors resulting from misinterpreting handwriting or writing incorrect information.

### Payments

The printers are also used to generate payment receipts. The versatile capabilities of the printer allow hospitals to standardize on a single printing solution for receipts and labels throughout the facility.

### Patient Identification

Wrist-tags or wristbands for patient identification and tracking can be printed from a Compact4 *Mark II* unit. A barcoded wristband ties the patient to any services they receive during their stay at the hospital and is critical to preventing mistakes often caused by human error. The Compact4 *Mark II*'s quiet operation enables the user to printing wristbands at the patient's bedside.

### Specimen Tracking

The Compact4 *Mark II* printer is a critical component in the laboratory. Every specimen analyzed and processed requires individual and highly accurate tracking. The Compact4 *Mark II* prints slide and test-tube barcode labels on demand during the process and easy media loading means the user can operate the printer even with gloves on.

### Surgeon Tool Tracking

Surgeons' tools go through a sterilization process before use. The Compact4 *Mark II* printers are used to print sterilization labels that identify when tools have gone through the process and how long before reprocessing is required. Other information such as recent operators and frequency of use can also be tracked.

### Prescription Labeling

Pharmacies use the Compact4 *Mark II* printers to print prescription labels. The labels containing critical information for the patient are adhered to the outside of the pill bottle or box of medication. Printing this information rather than handwriting avoids errors and misinterpretation which can lead to serious consequences.



### Retail

Retailers have a multitude of label and tagging needs and are often faced with having to use different printers for each task: a portable printer for shelf labeling, a stationary printer for item labeling, and a mobile printer for labeling returned merchandise. The Compact4 *Mark II* printers allow retailers to print all their label and tagging applications from a single printer and reduce hardware costs. The Compact4 *Mark II* series prints multiple sized labels from 1½ inches to 4 inches with exceptional print quality and barcode clarity. Models range from 200dpi to 300dpi for the ultimate in clarity and easy to read barcodes.

#### Shelf Tagging

Shelf tagging has a critical role in any retail business. Shelf tags tell stockers where to put the merchandise, show customers the price, and advertise specials and additional information about the product. Frequent printing of shelf tags is critical for effectively communicating up-to-date information to both personnel and customers. Unlike laser desktop printers where printing a single label means wasting media, the Compact4 *Mark II* series saves you money by printing just what is needed.



#### Shelf Talkers

Shelf talkers emphasize information critical to making the sale such as specials and discounts. They are larger than the usual shelf tag using their size to emphasize the message. Shelf talkers play a critical role in the communication to the customers.

#### Item Labeling

Item labeling with information like pricing, barcodes, and unit of measure/size are critical to the flow of products through the checkout process. A poorly printed or missing label can cause the infamous saying, “Price Check!”. The Compact4 *Mark II* printers take this technology to another level with features such as printhead diagnostics (PHD) which prevents the printing of unscannable barcodes. The Compact4 *Mark II* printers are available in 200dpi, and for maximum clarity on small labels or 2D symbologies, we recommend the 300dpi model. The Compact4 *Mark II* printers are able to print to high quality labels of all shapes and sizes to keep the checkout lines moving smoothly.



#### Returns Tagging and Labeling

Returned items that can be resold have to be retagged and returned to the display floor. These labels and tags come in many shapes, sizes, and materials, all of which can be handled by the Compact4 *Mark II* printers. These printers generate professional looking tags and labels, and the ease of loading media allows the user to get products back on the floor quickly.



### Retail (continued)

#### Receiving and In-Store Distribution

The day to day business of selling retail is reliant on getting items to the right place, right away. As soon as products are delivered to the store, the main concern is to get them on the shelf as soon as possible. In order for this to happen, one of two things must occur:

- the pallet has to be broken down and the products delivered to the correct display area
- the pallet is kept intact and delivered to the storage area.

Compact4 *Mark II* printers are used in the receiving area to generate labels with instructions such as “Stock Aisle 9 Shelf 3” or “Inventory Area B Shelf 1” to ensure that every product received is distributed correctly.

#### Ticketing

The Compact4 *Mark II* is small, fast, and able to print fan-folded tickets or tags, making it the ideal printer for ticketing applications in entertainment industries, theaters, amusement parks, sport arenas, cinemas and access authorization. These applications are almost always in a limited space that requires a printer with a small footprint. The compact design and versatile mounting options allows the Compact4 *Mark II* to be installed in any orientation. The Compact4 *Mark II*'s high speed printing and easy loading capabilities allows users to generate tickets in large volumes and help eliminate long lines at events.



#### Post/Parcel

Label and tag printing is critical to the day and night operations of any parcel post service. Unlike warehousing and distribution, a parcel post company profits from making accurate deliveries as fast as possible. Compact4 *Mark II* printers installed in this type of operation meet stringent requirements of fast performance, high reliability, fast media reloading, and easy servicing. The printers are used for producing postage, sorting labels, tracking labels, bin and tote tags, and bag tags.



## Tour the Printers ■ ■ ■

The Compact4 *Mark II* printers are designed for simple, uncomplicated, ease of use. There are a limited number of components that make learning how to use the printer easy and straight forward.

- |                 |                        |
|-----------------|------------------------|
| 1 Front cover   | 11 Communication ports |
| 2 Top cover     | 12 Power connection    |
| 3 Media roll    | 13 Power switch        |
| 4 Roll guide    | 14 Roll guide          |
| 5 Status lamp   | 15 Spool               |
| 6 Print button  | 16 Locking handle      |
| 7 Print roller  | 17 Lock plate          |
| 8 Release lever | 18 Lock guide          |
| 9 Paper path    | 19 Lock clips          |
| 10 Spindle      | 20 Bottom plate        |

The basic design consists of a locking spindle that securely holds the media in place and a print mechanism with a slotted paper path. The media is loaded into the paper path slot and secured with the roll guide and release lever.

The front and top covers are used to access the print roller for cleaning and maintenance. A status lamp indicates the current status of the printer - a red light indicates the printer is not ready for use and green indicates the printer is ready. The print button is used to feed media as well as print.

The communication ports allow the printer to be connected to a host via cable to communicate status and receive print data. Power connect comes in two forms: 110-230VAC (Compact4 *Mark II*) or 24-48VDC (Compact4 Mobile *Mark II*). Power is turned on and off using the power switch.

The following features are available on the Compact4 Mobile *Mark II* only: metal roll guide, locking handle, anti-spin media spool to keep the roll from unwinding during extreme vibration, DC ready power connection, lock plate, and a bottom plate with locking clip for quick removal.



### Small and Mighty. Simple to Use. Build to Last.

#### Small and Mighty

##### Small Footprint

The Compact4 *Mark II* printers have an incredibly small footprint which allows them to be used in applications where space is limited. Their compact size takes up less than half the space of a traditional desktop label printer but with the same duty cycle and strength.

##### Orientation Options

The Compact4 Mobile *Mark II* printers can be used in almost any orientation. The design of the printer and special mounting plates allow the printer to be used in its normal upright position, mounted vertically on the wall, or even mounted upside down. Multiple mounting options allow for greater flexibility when space limitations are a consideration.

##### Full Communications Suite

Each Compact4 *Mark II* printer includes a serial, USB, ethernet wired LAN and optional W-LAN 802.11b/g connection. These ports are included in the standard configuration at no additional cost - even the Ethernet port, which usually carries a premium charge, is included as a standard feature. And if parallel communication is required, all that's needed is an optional accessory cable (available from Datamax-O'Neil).

##### Complete Software Suite

The Compact4 *Mark II* printers come with a complete set of software to support development, configuration, network management, label design, DOS management, and Windows printing. Refer to the software section for further details.

- **Com API** – Supports software development by providing the proper interface to simplify printing operations.
- **MP Design** – Easy to use native label design tool that generates labels in the printer's native command language.
- **NetCenter** – Networked printer management software for easy visual management of the printers.
- **Tera Term** – DOS-based terminal program allows easy direct access to printer configuration menus.
- **Drivers** – Windows OS drivers support printing from Windows applications.
- **Web Browser Configuration** – Printers can be configured by using a standard internet browser to access the printer's onboard configuration page.



### **Network Printer Management**

Using NetCenter, an administrator can monitor the status of all Compact4 *Mark II* printers on the network. This software tool, included with every Compact4 *Mark II* printer, allows the user to take full advantage of the LAN port.

### **Firmware**

Compact4 *Mark II* is available in both Label Point and DPL. DPL version printers are available with PL-Z, PL-I, and PL-B emulation software.

## Simple to Use

### **Easy Loading**

Loading the Compact4 *Mark II* printers is unlike any other printer in the market. The levers are large and easy to manage -- so easy that the operation can be done single handed while wearing a leather or latex glove. The paper path is slotted through the side of the printer with no covers to open or clamshells to unlock. To load, you simply slip the label roll onto the spindle, slide the media into the slot, latch down the printhead and lock down the roll holder. Loading media doesn't get any easier.



### **Large Media Capacity**

The Compact4 Mobile *Mark II* printers have a higher media capacity than other mobile printers resulting in more labels being printed between roll changes and less downtime. Additionally, there is a material cost savings when you put more labels on the roll.

### **Designed for Mobility**

The Compact4 Mobile *Mark II* has special features which allow it to withstand the constant vibration inherent in operating a printer mounted to a forklift or cart. The specially designed media handling system includes a spring loaded spool to keep media from unwinding and a paper guide with lever-locks to prevent the roll from coming loose. Media remains secure even when mounted upside down or sideways yet is easy and quick to change.

### **Vehicle Power Ready**

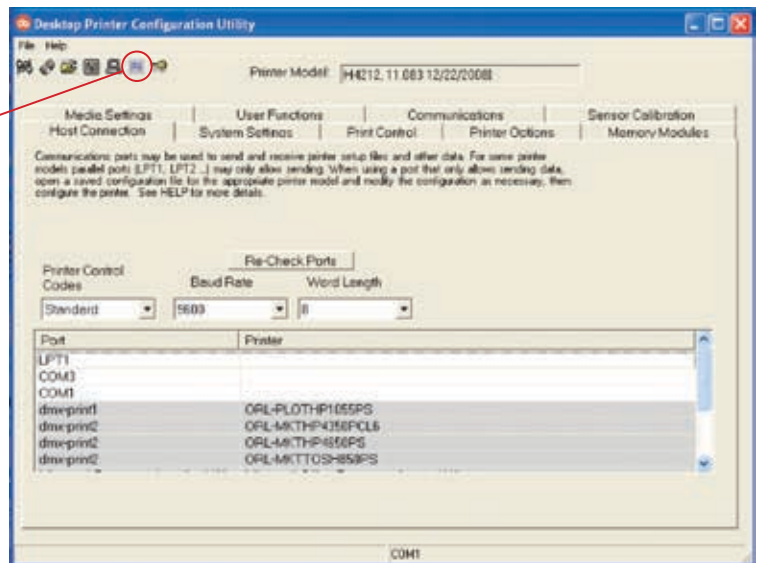
The Compact4 Mobile *Mark II* printers are designed to accept the direct current (DC) power available on your vehicle. Unlike competitors' printers which claim to be mobile ready, the Compact4 Mobile *Mark II* printers can handle the stress of power spikes and surges to keep printing reliably. The Compact4 Mobile *Mark II* printers are ready to accept 24-48VDC. A standard "off the shelf" power converter can be used on 12VDC systems to provide 24VDC to the printer.

## IntelliSEAQ™ Printhead (available for DPL printers only)

Datamax-O'Neil has the industry's first thermal printhead that combines advanced thermal control with full performance history to provide the most sophisticated diagnostics available today. This assures you that when you invest in a Datamax-O'Neil printer equipped with IntelliSEAQ™, you will receive:

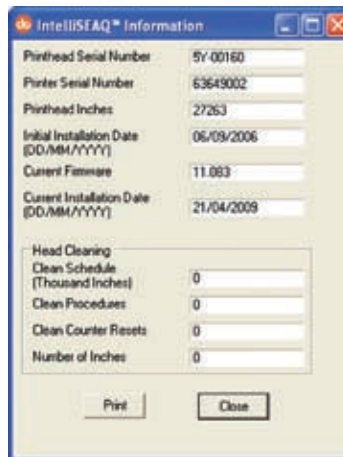
- An extremely durable printhead giving you longer printhead wear and increased up-time
- Real-time information on printhead use
- Printhead dot heat control

The "PH" icon is only visible on the **Desktop Printer Configuration Utility** with IntelliSEAQ supported printers.

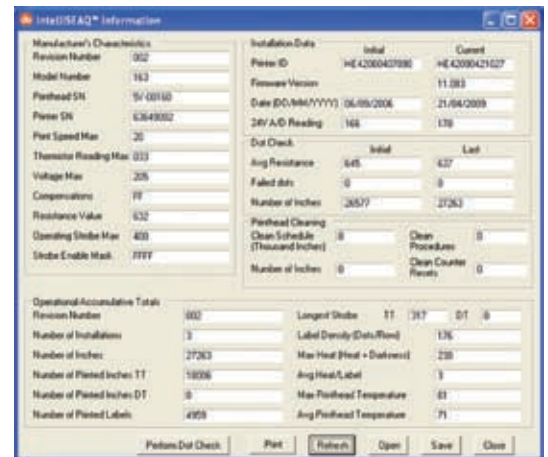


Maintaining the highest standards in printhead control, the life and performance of the printhead is dramatically increased. The advanced diagnostics stored in the printhead gives an integrator the tools to quickly assess the operation of the printhead and proactively service the customer's needs. This ensures that the demands of mission critical applications are met and maintained at any level of usage, and allows the printer to continue to perform on demand and not compromise productivity of the enterprise. A-Class printer information is available in both a short form and a long form.

The short form is available for viewing from the **Desktop Printer Configuration Utility**. This icon appears only on printers configured with the IntelliSEAQ printhead. Below is a sample of the short form with various fields populated.



**Short Form**  
Accessible by double clicking the "PH" icon on the Desktop Printer Configuration Utility window.



**Long Form (Integrator tool only)**  
Accessible by positioning the mouse over the "PH" icon on the Desktop Printer Configuration Utility window and selecting the SHIFT - ALT - D keys.

### **Universal Power Ready (Compact4 Mark II)**

The Compact4 *Mark II* printers are all equipped with an auto-ranging power supply making them ready for use anywhere in the world. Unlike other small printers, the Compact4 *Mark II* printer does not require an external power converter (a.k.a brick) between the printer and the wall outlet. Simply plug the printer cord directly into the wall and you are powered to print.

### **W-LAN**

Optional 802.11 B/G wireless LAN makes it easy to connect to networks and makes mobile printing operations in a Forklift easy. The wireless option has the latest WPA2 security protocol.

### **Emulations**

DPL version of the Compact4 *Mark II* printers is available with PL-Z, PL-I, or PL-B emulation capabilities, making it easy to replace competitive printers.

### **3-Way Top of Form Sensor**

One Sensor will replace the three previous sensors. It replaces Long, short, and reflective sensors all in one. This results in reduced stock of printers, reduced stock of spare-parts, and enables change of application without changing the hardware.

## **Built to Last**

### **Proven Reliability**

The Compact4 *Mark II* printers have been in use since 1999 with over 3 billion labels printed. Its reliability has been demonstrated in the most rugged of environments such as manufacturing floors, medical facilities, high volume warehouses, transportation docks and even forklift mounted applications. With its small footprint, easy to use design and durable construction, the Compact4 *Mark II* printer has proven its reliability.

### **Mobile Shock and Vibration Ready**

The Compact4 Mobile *Mark II* printer comes equipped with a quick lock plate that serves two major purposes: it allows the quick removal and installation of the printer with an Allen screw driver. The quick lock plate absorbs the stressful shock and vibrations transmitted from the vehicle. No other printer on the market takes these measures to ensure long reliable printing in vehicle-mounted mobile printing applications.

### **Rugged All Metal Construction**




The Compact4 *Mark II* printers are constructed on a solid cast metal frame and protected with metal die cast covers. Unlike other small printers, the Compact4 *Mark II* series are industrial printers that are built to withstand the rigors of a warehouse or high volume printing application.

## Competitive Overview ■ ■ ■

Compact4 *Mark II* printers are uniquely positioned between desktop and tabletop-sized printers. They share the same small footprint size of most desktop-sized entry level printers and the industrial grade ruggedness of table top-sized mid-range printers. They are the first to truly combine rugged reliability in a small footprint.

### Compact4 *Mark II*




No competitor offers the industrial ruggedness of the Compact4 *Mark II* in such a small footprint. The Compact4 *Mark II* comes standard with an internal solid metal chassis and extruded aluminum outer shell making it the only small printer constructed of solid metal inside and out.

| Product Image                          |  |  |  |
|--|---|--|---|
| Manufacturer/Model                     | Datamax/Compact4 <i>Mark II</i>   | Toshiba-TEC/B-452  | Microcom/424  |
| <b>Chassis Type</b>                    | Cast Metal  | Sheet Metal/Plastic  | Sheet Metal/Plastic   |
| <b>Shell Type/Material</b>             | Die Cast Aluminum with Special Non-Stick Coating                                  | Single Wall/Plastic  | Single Wall/Plastic   |
| <b>Media Loading Path</b>              | Easy access side slot and cantilever printhead latch                              | Complex printhead clamshell under a side hinged dustcover                          | Narrow opening low lift printhead   |
| <b>Configuration Placement Options</b> | Flat on horizontal surface, wall mount facing up, down, sideways, & upside down   | Flat on horizontal surface   | Flat on horizontal surface  |
| <b>Print Width/Speed</b>               | 4.1"/4.9 IPS  | 4.16"/4 IPS  | 4.1"/4 IPS  |
| <b>Max Roll OD/Location</b>            | 5.9"/External   | 6"/External  | 8" with optional external rack  |
| <b>Density/Method</b>                  | 200dpi/DT (300dpi optional)   | 300dpi/DT/TT   | 203dpi DT (300dpi optional)   |
| <b>Communications Ports</b>            | Serial/USB/Ethernet-wired LAN 10/100  | Serial/Parallel  | Serial, USB, Ethernet, Aux H/W flow control   |
| <b>Cutter</b>                          | Optional  | Optional   | Optional  |
| <b>W-LAN 802.11 b/g</b>                | Optional  | Not available  | Not available   |
| <b>Peeler</b>                          | Optional  | Optional   | Not available   |
| <b>Thermal Transfer</b>                | DTransfer Media   | Standard   | Not available   |
| <b>Emulations</b>                      | PL-Z, PL-I, and PL-B available for DPL models                                     | Not available  | Not available   |

## Compact4 Mobile *Mark II*

The Compact4 Mobile *Mark II* printer is the only true vehicle mount solution. The printer's mechanical structure has been successfully tried and tested against the effects of shock and vibration.

The printer is ready to accept DC voltage from 24VDC to 48VDC with electronics that are ready to handle the large variations in voltage and power spikes typical in a vehicle environment.\*

| Product Image                          |  |  |  |
|--|---|--|---|
| Manufacturer/Model                     | <b>Datamax/Compact4 Mobile <i>Mark II</i></b>                                     | <b>Toshiba-TEC 12VDC/B-452(12VDC)</b>  | <b>Zebra/QL420 w/Forklift Accessories</b>   |
| <b>DC Voltage</b>                      | 12*, 24-48  | 12   | 12 with special adaptor   |
| <b>Shock/Vibration Mount</b>           | Yes   | No   | No  |
| <b>Chassis Type</b>                    | Cast Metal  | Metal/Plastic  | Filled Plastic  |
| <b>Shell Type/Material</b>             | Die Cast Aluminum with Special Non-Stick Coating                                  | Single Wall/Plastic  | Single Wall with Rubber Molding/Plastic & Rubber                                    |
| <b>Media Loading Path</b>              | Easy access side slot and cantilever printhead latch                              | Complex printhead clamshell under a side hinged dustcover                          | Drop in roll with platen in cover   |
| <b>Configuration Placement Options</b> | Flat on horizontal surface, wall mount facing up, down, sideways, & upside down   | Flat on horizontal surface   | Flat in docking station, hand carry, shoulder carry, belt carry                     |
| <b>Print Width/Speed</b>               | 4.1"/4.9 IPS  | 4.16"/4 IPS  | 4.1"/3 IPS  |
| <b>Vibration Proof Media Holder</b>    | Yes – Specially design media spool  | No   | No  |
| <b>Environment Proof Media Guide</b>   | Yes – Machined metal guide with locking lever                                     | No   | No  |
| <b>Max Roll OD/Location</b>            | 3.9"/External   | 6"/External  | 2.6"/External   |
| <b>Density/Method</b>                  | 200dpi/DT (300 dpi optional)  | 300 DPI/DT/TT  | 203dpi  |
| <b>Communications Ports</b>            | Serial/USB/Ethernet-wired LAN 10/100  | Serial/Parallel  | Serial, BT option, Wireless LAN, IrDA, USB (QL+ only)                               |
| <b>Cutter</b>                          | N/A   | Optional   | N/A   |
| <b>W-LAN 802.11 b/g</b>                | Optional  | Not available  | Optional  |
| <b>Peeler</b>                          | Optional  | Optional   | Standard (short platform)   |
| <b>Thermal Transfer</b>                | DTransfer Media   | Standard   | Not available   |



# Technical Specifications ■ ■ ■

## at a glance

|                  | MP Compact4 Mark II                                 | MP Compact4 Mobile Mark II                          |
|------------------|---|---|
| Print technology | Direct thermal                                      | Direct thermal                                      |
| Height           | 4.1" (105mm)  | 4.9" (125mm)  |
| Width            | 9.1" (230mm)  | 9.1" (230mm)  |
| Depth            | 10.2" (260mm)                                       | 10.2" (260mm)                                       |
| Weight           | 7.7 lbs (3.5kg)                                     | 9.9 lbs. (4.5kg)                                    |
| Print width      | 4.1" (104mm)  | 4.1" (104mm)  |
| Resolution       | 200 dpi (8 dots per mm) or 300 dpi (12 dots per mm) | 200 dpi (8 dots per mm) or 300 dpi (12 dots per mm) |
| Max print speed  | 5" IPS (125mm)                                      | 5" IPS (125mm)                                      |
| Power source     | 110 /240 VAC ±15%, 50-60 Hz, 120 VA                 | 24-48 VDC ±15%, 120 VA                              |

## print technology ■ ■ ■

- Printer type:
  - Direct thermal
- Print length range:
  - Maximum length: unlimited

## physical characteristics ■ ■ ■

- Operating temperature:
  - 5°C to 40°C (41 F to 104 F)
- Humidity:
  - 20% to 85% noncondensing relative humidity
- Construction:
  - Metal

## integration ■ ■ ■

- Communication ports:
  - Standard: Serial RS232, USB2.0 Compatible, Ethernet wired LAN 10/100
- Software:
  - DMX Config: Complete printer setup utility
  - Terra Term configuration utility
  - MP Design - label design software
  - Embedded Network Web Pages
  - Net Center - remote management
  - Windows Drivers - NT, XP, Vista
- Firmware:
  - Updates available online
  - LabelPoint
  - DPL
  - Universal printer command language:
    - PL-Z (Zebra), PL-I (Intermec), PL-B (Boca), available for DPL version only

## accessories ■ ■ ■

### MP Compact4 Mark II

- Power cables
- parallel to serial cable
- USB cable

### MP Compact4 Mobile Mark II

- Parallel to serial cable
- USB cable

## barcodes/fonts/graphics ■ ■ ■

- Memory:
  - 4MB Flash / 8MB DRAM
- Real time clock:
  - Standard
- Barcodes:
  - Most current barcodes are available, including several two dimensional and stacked codes: QR code, PDF 417, Datamatrix, Maxicode, EAN 13, etc.
- Resident fonts:
  - For LabelPoint version:*
    - 10 scalable fonts as standard: Univers Medium - Univers Bold - Univers Condensed - Univers Condensed Bold - CG Times - CG Times Italic - CG Times Bold - CG Times Bold Italic - Letter Gothic Bold - Coronet
    - Supports English and all European languages, including Greek and Cyrillic characters
  - For DPL version:*
    - Nine expandable alphanumeric bitmapped fonts from .08" (2mm) to .25" (6mm) including OCR-A, OCR-B, and 6 scalable fonts as standard: CG Triumvirate™ - CG Triumvirate Bold Condensed™ - CG Times - CG Times Italic - CG Times Bold - CG Times Bold Italic.

## agency approval ■ ■ ■

Contact sales manager for the most current list

## warranty ■ ■ ■

- Printer:
  - 1-year factory warranty covers parts, labor, and return shipment
- Printhead:
  - 1 year or 1,000,000 inches whichever comes first; factory warranty covers parts, labor, and return shipment
- Extended warranty available by quote

## media ■ ■ ■

- Media type:
  - Die cut labels, continuous roll, fanfold tickets and tags.
  - Core diameter: minimum 1.57" (40 mm)
  - Maximum roll diameter: 4" (100mm) for MPCompact4 Mobile version only
  - Maximum roll diameter: 5.9" (150mm) MPCompact4 version only
- Media width range:
  - 1.58" - 4.5" (40mm -115mm)
- Minimum media length:
  - 0.39"(10mm)
- Media thickness range:
  - 0.0023"-0.0071" (.058mm - .18mm)
- Media sensing:
  - 3 way top of form sensor for gap, notch, and black mark
- Label backfeed:
  - For use with Optional cutter or present sensor

## options ■ ■ ■

### MP Compact4 Mark II

- Tower Kit
- Wall Mounting Kit
- Label Taken Sensor Kit
- Peeler kit
- Large Roll Kit (up to 5.9" roll or 150mm)
- W-LAN 802.11 B/G with WPA2 security protocol
- Cutter

### MP Compact4 Mobile Mark II

- Label Taken Sensor Kit
- Peeler kit
- W-LAN 802.11 B/G with WPA2 security protocol



[www.datamax-oneil.com](http://www.datamax-oneil.com)

Specifications subject to change without notice.  
Copyright 2009, Datamax-O'Neil (rev. 20091203)



datamax • o'neil

right by our customers.

A Company

The Compact4 *Mark II* printers have several options available to help meet your specific requirements and enhance your printing experience. Refer to the subsequent pages for availability and compatibility.



### **Tower Kit**

Unlike any other printer in the industry, the Compact4 *Mark II* printers can be stacked using the tower rack accessory. The rack is designed to maintain the footprint occupied by a single printer while allowing easy loading and printing operations.



### **Wall Mounting Kit**

The wall mounting kit allows the printer to be wall mounted quickly and easily. It is ideal in applications where counter space is limited and the printer is in close proximity.



### **Label Taken Sensor Kit**

The label taken sensor, also known as LTS, is commonly used with the peeler kit. A photo cell is mounted facing upward at the label exit to detect when the label is taken. The photo cell controls the printing pace so that the next label is printed only after the previous label has been removed.



### **Peeler Kit**

The peeler kit automatically separates the label from the label liner (backing) by pulling the liner over a sharp edge and winding it onto a three pronged spindle. This allows the user to take a printed label directly from the printer and apply it. A peeler kit along with a label taken sensor kit automates applying labels by removing the label liner and pausing printing until the label is taken.



### **Large Roll Kit**

The large roll kit allows the printer to handle a larger roll loaded onto its spindle which increases the roll diameter capacity from 3.9" (100mm) to 5.9" (150mm). The kit requires removing the old spindle and installing a new spindle that displaces the roll further from the printer.

### Cutter



A heavy duty cutter option is available on the Compact4 *Mark II* printer. The cutter attaches to the front of the printer and cuts the material after it has stopped, allowing it to fall freely. The cutter option allows you to cut a label or tag to the desired length or cut between labels, so that the printed materials can be easily stacked. The heavy duty cutter allows reliable cutting through label and liner or card stock as thick as 180  $\mu\text{m}$  (.007 inches). This accessory may only be installed at the factory or by a qualified service technician (not available for the Compact4 Mobile *Mark II* models).

### W-LAN



Optional 802.11 B/G wireless LAN makes it easy to connect to networks and makes mobile printing operations in a Forklift easy. The wireless option has the latest WPA2 security protocol.

### Emulations

DPL version of the Compact4 *Mark II* printers is available with PL-Z, PL-I, or PL-B emulation capabilities, making it easy to replace competitive printers.



### 300dpi Print Resolution

The upgrade to 300 dots per inch (dpi) must be ordered as an option and is factory installed. Some applications require printing at the higher 300 dpi resolution where 200dpi is not adequate.

| Option Compatibility Matrix       |             |     |                      |                   |                         |             |                         |           |                   |
|-----------------------------------|-------------|-----|----------------------|-------------------|-------------------------|-------------|-------------------------|-----------|-------------------|
| Printer                           | Power       | DPI | Wireless Option<br>① | Label Peeler<br>① | Label Taken Sensor<br>② | Cutter<br>① | Large Roll Handler<br>③ | Tower Kit | Wall Mounting Kit |
| MP Compact4 <i>Mark II</i>        | 110-240V AC | 200 | X                    | X                 | X                       | X           | X                       | X         | X                 |
| MP Compact4 <i>Mark II</i>        | 110-240V AC | 300 | X                    | X                 | X                       | X           | X                       | X         | X                 |
| MP Compact4 Mobile <i>Mark II</i> | 24-48C DC   | 200 | X                    | X                 | X                       |             |                         |           |                   |
| MP Compact4 Mobile <i>Mark II</i> | 24-48C DC   | 300 | X                    | X                 | X                       |             |                         |           |                   |

- ① - Must be installed at the factory or by a field service technician
- ② - Field installation, requires tools and drilling a hole
- ③ - Field installation, requires tools

## Consumables ■ ■ ■

Datamax-O'Neil printing supplies that are used for the MP Printers are popular in many industries including asset tracking labels for manufacturing, Meditech or Cerner labels for healthcare, and Direct Thermal Polypropylene labels for general industry. All these supplies and many more can be found in the supplies section.

Datamax-O'Neil offers a wide variety of world-class quality printing supplies for many industries including healthcare, retail, manufacturing, and shipping. Datamax-O'Neil Certified Supplies are engineered and tested to provide optimal performance and maximize output through your Datamax-O'Neil Printer. Visit our HYPERLINK "<http://www.image.com/do/com/en-us/datamax-o-neil-international-website/supplies/stationary-printer-supplies>" Supplies section for more information on our supplies and customization services.



## Windows OS Drivers

The latest Windows OS drivers for the Compact4 *Mark II* are available at [www.datamax-oneil.com](http://www.datamax-oneil.com) for download and installation on your computer. These drivers enable the user to print to a Compact4 *Mark II* printer from any Windows application that supports printing. The drivers have to be added to the operating system and selected via the software application.

## Com API – Development Tools

The Compact4 *Mark II* printers have Communication Application Program Interface (Com API) that provides a simple interface between an application and the printers and terminals. Support files are available for software programmers to make it easy for them to interface with the printer. The Com API support files can be downloaded from the Datamax-O'Neil web site at [www.datamax-oneil.com](http://www.datamax-oneil.com).

- Available as a DLL (Dynamically Linked Library)
- Supports Win95/98, WinNT, Win2000 and WinXP
- Supports true two-way communication on serial and Net box ports
- Simple interface with a few high-level functions
- Communication is optimized for speed
- Keeps track of which labels have been downloaded to the printer and which is active, even if the printer has been restarted
- Supports multi-threading

## NetCenter – Networked Printer Manager

NetCenter is the perfect software tool for finding and managing the Compact4 *Mark II* printers connected to the same local area network (LAN). All printers are automatically detected and listed in the intuitive graphical user interface.

The list shows network settings, firmware version, serial number and current status for each printer, making it easy to see which printers are online and ready, when paper or ribbon needs to be changed, when to configure printer network settings and when to manage firmware upgrades. NetCenter also provides easy access to each printer using the most common network protocols saving network administrators time and effort.

| Hostname | Printer Model      | Firmware | Time  | MAC Address  | DHCP | IP Address   | IP Mask     | Gateway     | Status        |
|----------|--------------------|----------|-------|--------------|------|--------------|-------------|-------------|---------------|
| MP0254d  | MP Compact4        | 5.02.17  | 0     | 0C9C9E00280E | Face | 10.36.3.28   | 255.255.0.0 | 10.36.1.230 | Ready         |
| MP0434d  | MP Mobile TT 3000P | 5.02.13  | 4.10  | 0C9C9E00441B | Face | 10.36.3.52   | 255.255.0.0 | 10.36.1.230 | Ready         |
| MP04663  | MP Mobile TT 3000P | 5.02.13  | 2     | 0C9C9E004663 | Face | 10.36.12.125 | 255.255.0.0 | 10.36.1.230 | Ready         |
| MP04663  | MP Mobile TT 3000P | 5.02.17  | 3672  | 0C9C9E004663 | Face | 10.36.3.84   | 255.255.0.0 | 10.36.1.230 | Ready         |
| MP0466d  | MP Mobile TT       | 5.02.17  | 3672  | 0C9C9E00466d | Face | 10.36.3.54   | 255.255.0.0 | 10.36.1.230 | Ready         |
| MP0504d  | MP Mobile 3000P    | 5.02.13  | 7     | 0C9C9E00504d | Face | 10.36.12.36  | 255.255.0.0 | 10.36.1.230 | Disconnected  |
| MP0504d  | MP Mobile TT 3000P | 5.02.13  | 2767  | 0C9C9E00504d | Face | 10.36.3.80   | 255.255.0.0 | 10.36.1.230 | Ready         |
| MP05136  | MP Mobile TT 3000P | 5.02.17  | 4043  | 0C9C9E005136 | Face | 10.36.3.36   | 255.255.0.0 | 0.0.0.0     | Ready         |
| MP0504d  | MP Mobile TT 3000P | 5.01.03  | 4195  | 0C9C9E00504d | Face | 10.36.3.52   | 255.255.0.0 | 10.36.1.230 | Ready         |
| MP0504d  | MP Mobile          | 5.02.17  | 4195  | 0C9C9E00504d | Face | 10.36.12.120 | 255.255.0.0 | 10.36.1.230 | Preconfigured |
| MP0504d  | MP Mobile          | 5.02.13  | 0     | 0C9C9E00504d | Face | 10.36.12.2   | 255.255.0.0 | 10.36.1.230 | Ready         |
| MP0504d  | MP Compact4        | 5.02.13  | 4647  | 0C9C9E00504d | Face | 10.36.25.300 | 255.255.0.0 | 10.36.1.230 | Disconnected  |
| MP0504d  | MP Mobile          | 5.01.03  | 2340  | 0C9C9E00504d | Face | 10.36.12.122 | 255.255.0.0 | 10.36.1.230 | Disconnected  |
| MP0504d  | MP Compact4        | 5.02.13  | 0     | 0C9C9E00504d | Face | 10.36.12.14  | 255.255.0.0 | 10.36.1.230 | Ready         |
| MP0504d  | MP Compact4        | 5.02.13  | 4900  | 0C9C9E00504d | Face | 10.36.12.121 | 255.255.0.0 | 10.36.1.230 | Disconnected  |
| MP0504d  | MP 2300            | 5.02.05  | 190   | 0C9C9E00504d | Face | 10.36.12.25  | 255.255.0.0 | 10.36.1.230 | Disconnected  |
| MP0504d  | MP 2420            | 5.02.09  | 22173 | 0C9C9E00504d | Face | 10.36.12.300 | 255.255.0.0 | 10.36.1.230 | Disconnected  |
| MP0504d  | MP 8100            | 0.00.01  | 0     | 0C9C9E00504d | Face | 0.0.0.0      | 255.255.0.0 | 0.0.0.0     | Disconnected  |
| MP0504d  | MP Mobile 3000P    | 5.02.13  | 3017  | 0C9C9E00504d | Face | 10.36.32.36  | 255.255.0.0 | 0.0.0.0     | Disconnected  |

### MP Design – Label Design

MP Design is a powerful label design software which programs label formats in the Compact4 *Mark II* printers' native command language, Labelpoint. MP Design is included at no charge with every printer and is also available to be downloaded at [www.datamax-oneil.com](http://www.datamax-oneil.com).

MP Design allows the user to create standardized label formats and optimize printing without learning the Labelpoint language.

### TeraTerm – Terminal Printer Configurator

TeraTerm is an easy to use DOS terminal program for configuring the Compact4 *Mark II* printers. It gives you access to the printer's internal setup menu where all necessary parameters can be set, e.g., port and network settings, print and label settings. TeraTerm is ideal when working in operating systems that do not support Windows applications.

### Labelpoint and DPL versions

Labelpoint and DPL (Datamax Programming language) are simple yet powerful command languages that control the Compact4 *Mark II* printers.

Labelpoint is a simple yet powerful command language that controls the Compact4 *Mark II* printers.

More information about all the functions and parameters of Labelpoint is available on the product CD delivered with the printer and on the Datamax-O'Neil website.

### Web Browser Configuration

An HTML configuration menu resides in the printer and can be accessed using an HTML browser. Once all the network information in the printer has been set, the configuration menu can be accessed by entering the printer's IP address on a web browser such as Internet Explorer or Netscape. The menu allows the user to view and change the printer's configuration parameters.

### Printer Firmware

The firmware controls how the printer operates and reacts to commands. Development updates are always being made to improve performance and enhance or add features. These updates are posted at [www.datamax-oneil.com](http://www.datamax-oneil.com) and available for download and loading to your printer.

### Ordering Products

#### From whom can I order Compact4 Mark II printers?

As a reseller, you can purchase Compact4 Mark II printers directly from Datamax-O'Neil.

### Repair Services

#### Where can I get the Compact4 Mark II printers serviced?

You can become an authorized service provider through training at Datamax-O'Neil, or you can return the products to Datamax-O'Neil for repair.

### Technical Services

#### Who should I contact for technical support?

As an authorized reseller, you are the first level of support for your customer. Datamax-O'Neil will support any technical questions that you are unable to provide. Help is available at any of the regional offices listed below:

| Datamax-O'Neil Corporate - HQ   | Datamax-O'Neil EMEA   | Datamax-O'Neil Asia-Pacific   | Datamax-O'Neil Latin America  |
|---|---|---|---|
| Orlando, FL USA<br>Monday - Friday<br>8:00am - 6:00pm EST<br>Tel: 407-523-5540<br>Fax: 407-523-5542 | France<br>Monday-Friday<br>Tel: +33 (0) 4 75 75 63 00<br>Fax: +33 (0) 4 75 82 98 39 | Singapore<br>Monday - Friday<br>0830 - 1730<br>Tel: +65 65052250<br>Fax: +65 67698135 | Orlando, FL USA<br>Monday - Friday<br>8:00am - 5:00pm EST<br>Tel: 407-523-5540<br>Fax: 407-523-5542 |

### Communications

#### What is the best communications port to use for mobile applications?

Due to the rough environment of most mobile applications, you should recommend to your customers that they use the serial port which is less susceptible to reinitializing if the power or connection is interrupted by constant vibration.

### Upgrades

#### How do I upgrade my customers' printers with available options?

After completing authorized service training, you will be capable of upgrading the printers with any compatible options. Printers may be upgraded with a compatible option at any time.



### 12VDC Power

#### Can a Compact4 Mobile *Mark II* printer be powered by a vehicle running on a 12V system?

If the vehicle can only provide 12VDC, Datamax-O'Neil recommends using 12VDC to 24VDC power converter to provide the proper amount of power to the Compact4 Mobile *Mark II* printer. The table below specifies the converter that should be used.

| 12VDC to 24VDC Converter Specifications |       |                          |                |     |                           |        |                    |                    |
|---|-------|--------------------------|----------------|-----|---------------------------|--------|--------------------|--------------------|
| Input Voltage, DC                       |       | Output Voltage (Nominal) | Output Current |     | Output Voltage Regulation |        | Output Ripple (mV) | No-Load Input (mA) |
| Nominal                                 | Range |                          | Continuous     | Max | 0-10%                     | 0-100% |                    |                    |
| 12.0                                    | 11-15 | 24.0 ±.5                 | 4A             | 6A  | 0.4V                      | 0.2V   | <60                | <100               |

### Vehicle Mounting

#### How do I mount the Compact4 Mobile *Mark II* printer to a forklift?

The Compact4 Mobile *Mark II* mounting plate provided is intended to mount to a mating plate or surface (not supplied) solidly attached to the vehicle using four 5mm machine screws. Datamax-O'Neil offers a universal mounting kit designed to match and support the Compact4 Mobile *Mark II* printer.

### Thermal Transfer (DTransfer)

#### Can the Compact4 *Mark II* print thermal transfer labels?

Yes, although the Compact4 *Mark II* and Compact4 Mobile *Mark II* printers are not equipped to handle thermal transfer ribbon rolls, the printer can still print thermal transfer labels using DTransfer. DTransfer is a specialty item, available for purchase from Datamax-O'Neil on an as-requested basis.



DTransfer is a 2.6 mil Polypropylene label stock and resin ribbon combined into a single roll. It is a durable, long lasting label with excellent resistance to weather, abrasion and chemical exposure. Additional materials are available by calling your Datamax-O'Neil Printer Supplies representative.

The printer does not need to be modified to use DTransfer. All you do is load the roll of DTransfer material, print, peel and apply the label.

### Command Language

#### What command language do the printers use?

The printers use either Labelpoint or DPL command language. It is an ASCII based language which can be easily interpreted, generated, and edited.

## Printer Compatibility

Below is an easy reference of present Compact4 part numbers to New Compact4 *Mark II* part numbers:

| New MP Compact4 <i>Mark II</i> |   | MP Compact4 |  |
|--------------------------------|---|-------------|--|
| Part #                         | Description                                       | Part #      | Description                            |
| 61-2193-01                     | MP COMPACT4 200 DPI                               | 61-6451-03  | MP COMPACT4 RS 200 DPI PRTSPAIN        |
| 61-2193-01                     | MP COMPACT4 200 DPI                               | 61-6451-01  | MP COMPACT4 LS 200 DPI PRTSPAIN        |
| 61-2193-01                     | MP COMPACT4 200 DPI                               | 61-6451-02  | MP COMPACT4 SS 200 DPI PRTSPAIN        |
| 61-2193-02                     | MP COMPACT4 300 DPI                               | 61-6451-06  | MP COMPACT4 RS 300 DPI PRTSPAIN        |
| 61-2193-02                     | MP COMPACT4 300 DPI                               | 61-6451-04  | MP COMPACT4 LS 300 DPI PRTSPAIN        |
| 61-2193-02                     | MP COMPACT4 300 DPI                               | 61-6451-05  | MP COMPACT4 SS 300 DPI PRTSPAIN        |
| 61-2193-03                     | MP COMPACT4 200 DPI WIRELESS                      |             |  |
| 61-2193-04                     | MP COMPACT4 300 DPI WIRELESS                      |             |  |
| 61-2193-05                     | MP COMPACT4 200 DPI W/LABELROLL                   | 61-6451-07  | CMPT4 LS 200 DPI W/LABEL ROLL          |
| 61-2193-06                     | MP COMPACT4 300 DPI W/LABELROLL                   | 61-6451-08  | CMPT4 LS 300 DPI W/LABEL ROLL          |
| 61-2193-07                     | MP COMPACT4 200 DPI WIRELESS W/LABELROLL          |             |  |
| 61-2193-08                     | MP COMPACT4 300 DPI WIRELESS W/LABELROLL          | 61-6451-09  | CPMT4 LS 200 DPI W/PEEL-OFF SPAIN      |
| 61-2193-09                     | MP COMPACT4 200 DPI W/PEEL-OFF KIT                |             |  |
| 61-2193-10                     | MP COMPACT4 200 DPI WIRELESS W/PEEL-OFF KIT       | 61-6451-10  | CMPT4 LS 200 DPI W/LTS KITSPAIN        |
| 61-2193-11                     | MP COMPACT4 200 DPI W/LTS KIT                     | 61-6451-11  | CMPT4 RS 200 DPI W/LTS KITSPAIN        |
| 61-2193-12                     | MP COMPACT4 200 DPI WIRELESS W/LTS KIT            |             |  |
| 61-2193-13                     | MP COMPACT4 200 DPI W/CUTTER                      | 61-6451-15  | CMPT4 RS 200 DPI W/CUTTER SPAIN        |
| 61-2193-13                     | MP COMPACT4 200 DPI W/CUTTER                      | 61-6451-13  | CMPT4 LS 200 DPI W/CUTTER SPAIN        |
| 61-2193-13                     | MP COMPACT4 200 DPI W/CUTTER                      | 61-6451-14  | CMPT4 SS 200 DPI W/CUTTER SPAIN        |
| 61-2193-14                     | MP COMPACT4 300 DPI W/CUTTER                      | 61-6451-12  | CMPT4 LS 300 DPI W/CUTTER SPAIN        |
| 61-2193-15                     | MP COMPACT4 200 DPI WIRELESS W/CUTTER             |             |  |
| 61-2193-16                     | MP COMPACT4 300 DPI WIRELESS W/CUTTER             |             |  |
| 61-2193-17                     | MP COMPACT4 200 DPI W/LABELROLL & LTS             | 61-6451-16  | CMPT4 LS 200 DPI W/LABEL ROLL & LTS    |
| 61-2193-18                     | MP COMPACT4 200 DPI WIRELESS W/LABELROLL & LTS    |             |  |
| 61-2193-19                     | MP COMPACT4 200 DPI W/PEELOFF & LTS               | 61-6451-17  | CMPT4 LS 200 DPI W/PEELOFF & LTS SPAIN |
| 61-2193-20                     | MP COMPACT4 300 DPI W/PEELOFF & LTS               | 61-6451-18  | CMPT4 LS 300 DPI W/PEELOFF & LTS SPAIN |
| 61-2193-21                     | MP COMPACT4 200 DPI WIRELESS W/PEELOFF & LTS      |             |  |
| 61-2193-22                     | MP COMPACT4 300 DPI WIRELESS W/PEELOFF & LTS      |             |  |
| 61-2193-23                     | MP COMPACT4 200 DPI W/CUTTER & LABELROLL          | 61-6451-19  | CMPT4 LS 200 DPI W/CUT & LABELROLL     |
| 61-2193-24                     | MP COMPACT4 200 DPI WIRELESS W/CUTTER & LABELROLL |             |  |

## Frequently Asked Questions ■ ■ ■

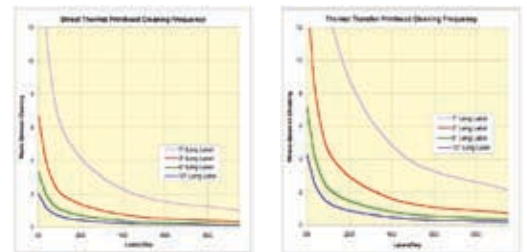
| New MP Compact4 Mobile <i>Mark II</i> |                                      | MP Compact4 Mobile |                                     |
|---------------------------------------|--------------------------------------|--------------------|-------------------------------------|
| Part #                                | Description                          | Part #             | Description                         |
| 61-2194-01                            | MP COMPACT4 G2 MOB 200 DPI PRT       | 61-6456-01         | MP COMPACT4 MOB LS200 PRT ROHSSPAIN |
| 61-2194-01                            | MP COMPACT4 G2 MOB 200 DPI PRT       | 61-6456-02         | MP COMPACT4 MOB SS200 PRT ROHSSPAIN |
| 61-2194-02                            | MP COMPACT4 G2 MOB 300 DPI PRT       | 61-6456-03         | MP COMPACT4 MOB LS300 PRT ROHSSPAIN |
| 61-2194-03                            | MP CMPT4 G2 MOB 200 DPI WIRELESS PRT |                    |                                     |
| 61-2194-04                            | MP CMPT4 G2 MOB 300 DPI WIRELESS PRT |                    |                                     |
| 61-2194-05                            | CMPT4 G2 MOB 200 DPI W/PEEL-OFF      | 61-6456-04         | MP COMPACT4 MOB LS200 W/PEEL-OFF    |
| 61-2194-06                            | CMPT4 G2 MOB 200 DPI WRLSS W/PL-OFF  |                    |                                     |
| 61-2194-07                            | CMPT4 G2 MOB 200 DPI W/LTS           | 61-6456-05         | MP CMPT4 MOB LS200 W/LTS SPAIN      |
| 61-2194-08                            | CMPT4 G2 MOB 200 DPI WIRELESS W/LTS  |                    |                                     |
| 61-2194-09                            | CMPT4 G2 MOB 200 DPI W/PL-OFF & LTS  | 61-6456-06         | MP CMPT4 MOB LS 200 WPO LTS SPAIN   |
| 61-2194-10                            | CMPT4 G2 MOB 200 DPI WRLSS W/PO&LTS  |                    |                                     |

### Preventive Maintenance

Datamax-O'Neil recommends regularly scheduled maintenance to keep your printer operating reliably with uninterrupted service.

To be safe, Datamax-O'Neil recommends cleaning your printer using Compact4 *Mark II* cleaning cloths as instructed in the user's guide between every roll change.

Reference the graphs below to match your usage and print method (direct thermal or thermal transfer) to determine how often you should be cleaning your printhead.



### Warranty Statement

#### Compact4 *Mark II* and Compact4 Mobile Printers Limited Warranty Statement

Datamax-O'Neil warrants to the Purchaser that under normal use and service the Compact4 *Mark II* and Compact4 Mobile printers (with the exception of the thermal printhead and platen roller) purchased hereunder shall be free from defects in material and workmanship for a period of twelve months from the date of shipment from Datamax-O'Neil or 1 million linear inches of use, whichever comes first.

#### **1 year factory warranty covers parts, labor, and return shipment.**

- Extended warranty available by quote

Expendable and/or consumable items or parts (such as lamps, fuses, labels and ribbons) are not covered under this warranty. This warranty does not cover equipment or parts, which have been misused, altered, neglected, handled carelessly, or used for purposes other than those for which they were manufactured. This warranty also does not cover loss, damages resulting from accident, or damages resulting from unauthorized service.

### Printer

Datamax-O'Neil warrants to Purchaser that under normal use and service, the MP Compact4 *Mark II* Printer, (with the exception of the thermal printhead) purchased hereunder shall be free from defects in material and workmanship for a period of (365) days from the date of shipment by Datamax-O'Neil. Expendable and/or consumable items or parts such as lamps, fuses, labels and ribbons are not covered under this warranty. This warranty does not cover equipment or parts that have been misused, altered, neglected, handled carelessly, or used for purposes other than those for which they were manufactured. This warranty also does not cover loss, damages resulting from accident, or damages resulting from unauthorized service.

### Thermal Printhead

This warranty is limited to a period of one year, (365 days), or 1,000,000 linear inches of use, whichever comes first, for the MP Compact4 *Mark II* thermal printhead. This one year (365 days) warranty is valid only if a Datamax-O'Neil – approved thermal label media is used, as defined in the then current Datamax-O'Neil list of approved thermal/thermal transfer media, a copy of which is available from Datamax-O'Neil. Failure to use Datamax-O'Neil-approved media is justification for invalidation of this thermal printhead warranty. This warranty does not cover printheads which have been misused, altered, neglected, handled carelessly, or damaged due to improper cleaning or unauthorized repairs.

### Warranty Service Procedures

If a defect should occur during the warranty period, the defective unit shall be returned, freight and insurance prepaid, in the original shipping containers. A Return Material Authorization (RMA) number must be issued before the product can be returned. To obtain an RMA number please contact the Datamax-O'Neil according to the regions listed below:

#### North and South America

Datamax-O'Neil (USA)  
4501 Parkway Commerce Blvd.  
Orlando, Florida 32808 USA  
tel: +1 407 523-5550

#### Asia Pacific and Australia

Datamax-O'Neil (ASPAC)  
Contact below for RMA and  
return instructions  
tel: +65 6505 225  
e-mail: tsaspac@datamax-oneil.com

#### Europe, Middle East, and Africa

Datamax-O'Neil (EMEA)  
26, Rue Gaspard Monge  
Bourg Les Valence, France 26500  
Tel : +33 (0) 4 75 75 56 72  
Fax : +33 (0) 4 75 82 98 38

The RMA number must be on the outside of the box and on the shipping document. Be sure to Include a contact name, a description of the problem(s). Datamax-O'Neil shall not be responsible for any loss or damages incurred in shipping.

Datamax-O'Neil will repair defects covered under warranty conditions and return the repaired or replaced product to the Purchaser at Datamax-O'Neil's cost. The warranty shall continue in effect until the end of the original warranty period, or for sixty (60) days after the repair or replacement, which ever is later.

### Compact4 Mark II



UL1950 3rd Edition  
CAN/CSA C22.2 No. 950-95

### Compact4 Mobile Mark II

UL60950-1: 2003, 1st Edition  
CAN/CSA C22.2 No. 60950-1-03 1st Edition

**Electromagnetic Compatibility** (EMC-Directive) **89/336 /EEC** and amendment **93/68/EEC**, measured through the European standards:

EN 61000-6-2: 2001: Generic immunity standard for Industrial environment

EN 61000-6-3: 2001: Generic emission standard for residential, commercial and light-industrial environments

**Low Voltage** (LVD-Directive) **73/23/EEC** and amendment **93/68/EEC**, measured through the European standard:

IEC 60950-1: 2001 1st Edition

Machinery Directive AFS 1994:48 (98/37/EC). The requirements concerning mechanical risks in the standard EN 60950-1 cover all the requirements in the Machinery Directive as stated by a risk analysis.

The manufacturer declares under sole responsibility that this product conforms to the following standards or other normative documents:



EMC: EN 55022 (1998) Class B

EN 50024 (1998)

Safety: This product complies with the requirements of EN 60950-1, 1st Edition

**The Undersigned hereby declares that these devices comply with Part 15 of the FCC Rules according to the following specifications:**

FCC Part 15, Subpart B, Section 15.107 (Conducted emissions) and Section 15.109 (RF emissions) for Class B Digital devices.

### Supplementary Information

This device complies with part 15 of the FCC Rules. Operation is subject to the following two conditions: (1) This device may not cause harmful interference, and (2) this device must accept any interference received, including interference that may cause undesired operation.







## ***MP Compact4 Mark II Options***

| <b>Part#</b> | <b>Description</b>                 |
|--------------|------------------------------------|
| 540707       | Parallel to Serial Converter Cable |
| 000554       | Cable Mains EU Black               |
| 001463       | Cable Mains USA/Canada Black       |
| 001464       | Cable Mains UK Black               |
| 100146       | Cable Mains Swiss Black            |
| 100147       | Cable Mains Denmark Black          |
| 100148       | Cable Mains Oceanic Black          |
| 100149       | Cable Mains China Black            |
| 502543       | USB-Cable Compact Nova             |
| 532546       | Tower mounting Kit                 |
| 532575       | Wall-mount Kit-Compact             |

## ***MP Compact4 Mobile Mark II Options***

| <b>Part#</b> | <b>Description</b>                 |
|--------------|------------------------------------|
| 501139       | DC Power Cable                     |
| 540707       | Parallel to Serial Converter Cable |
| 502543       | USB-Cable Compact Nova             |

## ***MP Nova Options***

| <b>Part#</b> | <b>Description</b>             |
|--------------|--------------------------------|
| 000554       | Cable Mains EU Black           |
| 001463       | Cable Mains USA/Canada Black   |
| 001464       | Cable Mains UK Black           |
| 502543       | USB-Cable Compact Nova         |
| 502631       | Daisy Chain Cable Compact Nova |





# right by our customers



## around the world.

### North America

#### Corporate Headquarters - Florida

4501 Parkway Commerce Blvd.  
Orlando, FL 32808  
Tel: 800-816-9649  
Fax: 407-578-8377

#### California

8 Mason  
Irvine, CA 92618  
Tel: 949-458-0500  
Fax: 949-458-0708

#### Datamax-O'Neil Printer Supplies

7656 E. 700th Avenue  
Robinson, IL 62454  
Tel : 618-546-5418  
Fax : 618-546-1518

### Asia Pacific

#### Singapore

9 Toh Guan Road East  
#04-01 Alliance Building  
Singapore 608604  
Tel: +65-65052250  
Fax: +65-67698135

#### China

Room 1016, FL 10 Tianjian Bldg.  
6th Huixinnanli  
Chaoyang District, Beijing  
Tel: +86 10 6496 9313  
Fax: +86 10 6494 8937

#### Thailand

2nd Floor, RN Building  
961 Rama 3 Rd  
Bangpongpan, Yannawa  
Bangkok 10120  
Tel: +662 6897321  
Fax: +662 6897337

### Latin America

#### Argentina

Av. Franklin D. Roosevelt 4989  
Suite 303  
Buenos Aires (C1431BZC)  
Tel: +54 (11) 5555 6519  
Fax: +54 (11) 4521 8022

#### Brazil

Rua Emilio de Menezes, 27 Cj 81  
Santa Cecilia/Sao Paulo SP  
Brasil CEP 01231-020  
Tel: +55 11-3825-0690  
Fax: +55 11-3666-1744

#### Mexico

Av. Central No. 186-B  
Col. Nueva Industrial Vallejo  
C.P 07700, Mexico DF  
Tel: +52 55 11 68 61 46  
Fax: +52 55 11 68 61 02

### Europe, Middle East, Africa

#### France

9 Rue Gaspard Monge  
26500 Bourg-lès-Valence  
Tel: +33 (0) 4 75 75 63 00  
Fax: +33 (0) 4 75 82 98 39

[www.datamax-oneil.com](http://www.datamax-oneil.com)



**datamax • o'neil**  
right by our customers.