

Firebox® T10, T30 and T50

PROTECT WHERE YOU CONNECT

RETHINK THE PERIMETER

Ideal for small office/branch office and small retail environments, the Firebox T10, T30 and T50 create a secure network perimeter in remote locations that do not have adequate security protection in place today. Comprehensive Unified Threat Management (UTM) safeguards intellectual property and protects personal data, credit card numbers, and other critical assets from exposure and theft.

THE BENEFITS OF UTM

An all-in-one network security solution integrates complete protection. All security capabilities work together for a comprehensive approach to network protection with a single console for reporting.

BEST-OF-BREED SECURITY

- Application-layer content inspection recognizes and blocks threats that stateful packet firewalls cannot detect.
- Powerful subscription-based security services boost protection in critical attack areas for multiple layers of defense. By partnering with leading technology providers, WatchGuard is able to integrate best-of-breed security components into one Unified Threat Management platform for stronger security at big cost savings.
 - **APT Blocker** uses a cloud-based sandbox with full system emulation to detect and block advanced malware and zero day attacks.
 - **Application Control** keeps unproductive, inappropriate, and dangerous applications off-limits.
 - **Intrusion Prevention Service (IPS)** delivers in-line protection from malicious exploits, including buffer overflows, SQL injections, and cross-site scripting attacks.
 - **WebBlocker** controls access to sites that host objectionable material or pose network security risks.
 - **Gateway AntiVirus (GAV)** scans traffic on all major protocols to stop threats.
 - **spamBlocker** delivers continuous protection from unwanted and dangerous email.
 - **Reputation Enabled Defense** ensures faster, safer web surfing with cloud-based look-up.
 - **Data Loss Prevention (DLP)** automatically inspects data in motion for corporate policy violations.
- Multiple VPN choices (IPSec, SSL, L2TP) for secure remote access include support for Android and Apple iOS devices.

EASY TO MANAGE

- Interactive, real-time monitoring & reporting, at no additional charge, give an unprecedented view into network security activity so you can take immediate preventive or corrective actions.
- **WatchGuard Dimension™**, a public and private cloud-ready visibility solution, instantly turns raw data into security intelligence.
- **RapidDeploy™** technology enables quick, secure configuration at remote locations without technical staff on-site.
- Intuitive management console centrally manages all security functions.
- Drag-and-drop Branch Office VPN setup – three clicks and your remote office is connected.

CHOOSE BUILT-IN WIRELESS

- Wireless models (those with -W at the end of their model number) include optional dual-band 802.11a/b/g/n/ac technology for much more responsive wireless network connection and expanded range. 2.4 GHz or less crowded 5 GHz band.
- Wireless guest services segment the Internet for customers/guests.

CHOOSE BUILT-IN DSL on Firebox T10-D

- Firebox T10-D supports all VDSL2 profiles (8a, 8b, 8c, 8d, 12a, 12b, 17a, 30a) and all ADSL standards (ADSL1/2/2+).
- Auto-configuration for easy connection to connectivity service providers.

Firebox T Series

THROUGHPUT

	T10/T10-W	T30/30-W	T50/50-W
Firewall throughput	400 Mbps	620 Mbps	1.2 Gbps
VPN throughput	100 Mbps	150 Mbps	270 Mbps
AV throughput	120 Mbps	180 Mbps	235 Mbps
IPS throughput	160 Mbps	240 Mbps	410 Mbps
UTM throughput	90 Mbps	135 Mbps	165 Mbps
Interfaces 10/100/1000	3 copper*	5 copper	7 copper
I/O interfaces	1 SRL/1 USB	1 SRL/2 USB	1 SRL/2 USB
Power over Ethernet (PoE)	n/a	1 port	1 port
Concurrent connections	50,000	200,000	300,000
New connections per second	2,300	3,400	4,600
Wireless	802.11a/b/g/n	802.11a/b/g/n/ac	802.11a/b/g/n/ac
VLANs	10	50	75
Authenticated users limit	200	500	500
VPN TUNNELS			
Branch Office VPN	5	40	50
Mobile VPN IPSec & SSL/L2TP	5	25	50

SECURITY FEATURES

Firewall	Stateful packet inspection, deep packet inspection, proxy firewall
Application proxies	HTTP, HTTPS, SMTP, FTP, DNS, TCP, POP3
Threat protection	DoS attacks, fragmented packets, blended threats and more
VoIP	H.323, SIP, call setup and session security
Filtering options	Browser Safe Search, YouTube for Schools
Security subscriptions	Application Control, IPS, WebBlocker, GAV, Data Loss Prevention, spamBlocker, Reputation Enabled Defense, APT Blocker

VPN & AUTHENTICATION

Encryption	DES, 3DES, AES 128-, 192-, 256-bit
IPSec	SHA-1, SHA-2, MD5, IKE pre-shared key, 3rd party cert
Single sign-on	Supports Windows, Mac OS X, mobile operating systems
Authentication	RADIUS, LDAP, Windows Active Directory, VASCO, RSA SecurID, internal database

MANAGEMENT

Logging and notifications	WatchGuard, Syslog, SNMP v2/v3
User interfaces	Centralized console (WSM), Web UI, scriptable CLI
Reporting	WatchGuard Dimension includes 70 pre-defined reports, executive summary and visibility tools

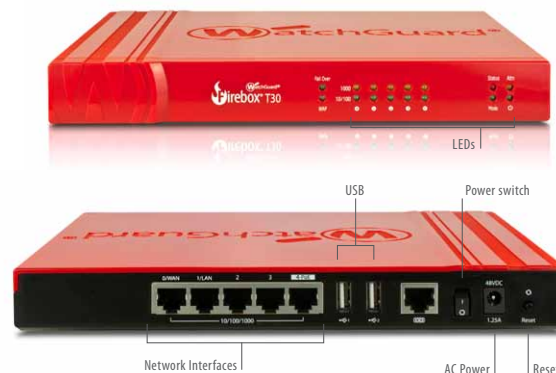
CERTIFICATIONS

Security	Pending: ICSA Firewall, ICSA IPSec VPN
Safety	NRTL/C, CB
Network	IPv6 Ready Gold (routing)
Hazardous substance control	WEEE, RoHS, REACH



NETWORKING

Routing**	Dynamic (BGP4, OSPF, RIP v1/v2), Policy-based VPN
High Availability	Active/passive available on T30 and T50 models
QoS	8 priority queues, DiffServ, modified strict queuing
IP address assignment	Static, DHCP (server, client, relay), PPPoE, DynDNS
NAT	Static, dynamic, 1:1, IPSec traversal, policy-based / Virtual IP for server load balancing**
Link aggregation**	802.3ad dynamic, static, active/backup
Other features	Static routing, port Independence, transparent/drop-in mode/Multi-WAN failover and load balancing**, server load balancing**



PHYSICAL AND POWER SPECIFICATIONS

Product Dimensions	
T10/T10-W	7.5" x 6.0" x 1.25" (19 x 15.2 x 3.2 cm)
T30/T30-W • T50/T50-W	9.3" x 6.8" x 1.4" (23.7 x 17.3 x 3.6 cm)
Shipping Dimensions	
T10/T10-W	12.5" x 7.25" x 2" (32 x 18.4 x 5 cm)
T30/T30-W • T50/T50-W	10.5" x 8.5" x 4" (26.7 x 22 x 10.2 cm)
Shipping Weight	
T10/T10-W	3.1 lbs (1.5 Kg)
T30/T30-W • T50/T50-W	3.1 lbs (4 Kg)
AC Power	100-240 VAC Autosensing
Power Consumption	U.S. 15 Watts (51 BTU/hr) (max)
Rack Mountable	No

ENVIRONMENT	OPERATING	STORAGE
Temperature	32° F to 104° F 0° C to 40° C	-40° F to 158° F -40° C to 70° C
Relative Humidity	10% to 85% non-condensing	10% to 95% non-condensing
Altitude	0 to 9,843 ft at 95° F (3,000 m at 35° C)	0 to 15,000 ft at 95° F (4,570 m at 35° C)
MTBF	129,955 hours at 104° F (40° C)	129,955 hours at 104° F (40° C)

STRONG SECURITY AT EVERY LAYER

WatchGuard uses a best-of-breed strategy to create the most reliable security solutions on the market. By partnering with industry-leading technology vendors, WatchGuard delivers an all-star family of UTM network security products.



EXPERT GUIDANCE AND SUPPORT

An initial subscription to WatchGuard's support and maintenance program is included with every Firebox T10, T30, and T50 appliance. This provides hardware warranty with advance hardware replacement, 12/5 technical support, and software updates.

MULTIPLE PURCHASE OPTIONS

The flexibility of WatchGuard's integrated platform makes it easy to have exactly the security components your business network requires. Talk to your authorized WatchGuard reseller about very affordable bundled subscriptions for the Firebox T10, T30, and T50.

Throughput rates are determined using multiple flows through multiple ports and will vary depending on environment and configuration. Contact your WatchGuard reseller or call WatchGuard directly (1.800.734.9905) for help determining the right model for your network. You can also refer to the Appliance Sizing Guide at www.watchguard.com/sizing.

*Firebox T10-D (DSL) is available in Europe & Australia. Supports ADSL2+VDSL2/ADSL on WAN port with integrated modem.

**Not available on Firebox T10, T10-W, T10-D

U.S. SALES 1.800.734.9905 INTERNATIONAL SALES +1.206.613.0895
WEB www.watchguard.com