



COMPARISON GUIDE

CONTENTS & NAVIGATION

2-6

HP Z Displays

7-8

HP DreamColor

9

HP Z Specialty

10

Sources and legal disclaimers





CONTENTS & NAVIGATION

2-6

HP Z Displays

7-8

HP DreamColor

9

HP Z Specialty

10

Sources and legal disclaimers

HP Z DISPLAYS



	HP Z22n G2	HP Z23n G2
Overview	Be a productive powerhouse with sleek displays ranging from 21.5 to 27-inches diagonal. These virtually seamless displays are factory-tested for reliability and longevity with integrated color calibration, uninterrupted multi-screen ¹ tiling, and expansive device connections.	
Panel Type	IPS	IPS
Viewable Image Area (diagonal)	21.5-inch	23-inch
Native Resolution	1920 x 1080 @ 60Hz	1920 x 1080 @ 60Hz
Aspect Ratio	16:9	16:9
Brightness	250 cd/m ²	250 cd/m ²
Contrast Ratio	1,000:1 Static 10,000,000:1 Dynamic	1,000:1 Static 10,000,000:1 Dynamic
Anti-Glare	Yes	Yes
Factory Color Calibrated	Yes	Yes
Color Gamut	95% sRGB	>94% sRGB
Color Depth	8-bit (6+2 FRC) 16.7 Million colors	8-bit (6+2 FRC) 16.7 Million colors
Response Rate ² (gray to gray)	5 ms	5 ms
Viewing Angle	178° x 178°	178° x 178°
Video Input Signal	(1) DisplayPort™ 1.2 (1) HDMI 1.4 (1) VGA	(1) DisplayPort™ 1.2 (1) HDMI 1.4 (1) VGA
HDCP Support	DisplayPort™, HDMI	DisplayPort™, HDMI
USB Ports	(2) USB 3.0 Hub	(2) USB 3.0 Hub
Adjustability	Height: 150 mm Tilt: -5° to + 22° Swivel: +/- 45° Pivot: 90°, CW and CCW	Height: 150 mm Tilt: -5° to + 22° Swivel: +/- 45° Pivot: 90°, CW and CCW
Dimensions (W x D x H) Unpacked With Stand Maximum Height	48.83 x 20.5 x 44.87 cm 19.22 x 8.07 x 17.7 in	52.1 x 20.5 x 45.8 cm 20.5 x 8.07 x 18 in
Weight With Stand	5.3 kg 11.7 lb	5.9 kg 13 lb
Weight Head Only	2.8 kg 6.2 lb	3.3 kg 7.3 lb
Certification and Compliance	CEL Grade 1, ENERGY STAR®, EPEAT® Gold, Microsoft WHQL (Win 7, Win 10), TCO, TCO Edge	CEL Grade 1, ENERGY STAR®, EPEAT® Gold, Microsoft WHQL (Win 7, Win 10), TCO, TCO Edge
Warranty	3-year standard limited warranty	3-year standard limited warranty
Zero Bright Dot Guarantee ³	Yes	Yes



CONTENTS & NAVIGATION

2-6

HP Z Displays

7-8

HP DreamColor

9

HP Z Specialty

10

Sources and legal disclaimers

HP Z DISPLAYS



	HP Z24i G2	HP Z24nf G2
Overview	Be a productive powerhouse with sleek displays ranging from 21.5 to 27-inches diagonal. These virtually seamless displays are factory-tested for reliability and longevity with integrated color calibration, uninterrupted multi-screen ¹ tiling, and expansive device connections.	
Panel Type	IPS	IPS
Viewable Image Area (diagonal)	24-inch	23.8-inch
Native Resolution	1920 x 1200 @ 60 Hz	1920 x 1080 @ 60 Hz
Aspect Ratio	16:10	16:9
Brightness	300 cd/m ²	250 cd/m ²
Contrast Ratio	1,000:1 Static 10,000,000:1 Dynamic	1,000:1 Static 10,000,000:1 Dynamic
Anti-Glare	Yes	Yes
Factory Color Calibrated	Yes	Yes
Color Gamut	>99% sRGB	95% sRGB
Color Depth	8-bit (6+2 FRC) 16.7 Million colors	8-bit (6+2 FRC) 16.7 Million colors
Response Rate ² (gray to gray)	5 ms	5 ms
Viewing Angle	178° x 178°	178° x 178°
Video Input Signal	(1) DisplayPort™ 1.2 (1) HDMI 1.4 (1) VGA	(1) DisplayPort™ 1.2 (1) HDMI 1.4 (1) VGA
HDCP Support	DisplayPort™, HDMI	DisplayPort™, HDMI
USB Ports	(2) USB 3.0 Hub	(2) USB 3.0 Hub
Adjustability	Height: 150 mm Tilt: -5° to + 22° Swivel: +/- 45° Pivot: 90°, CW and CCW	Height: 150 mm Tilt: -5° to + 22° Swivel: +/- 45° Pivot: 90°, CW and CCW
Dimensions (W x D x H) Unpacked With Stand Maximum Height	53.88 x 20.5 x 46.3 cm 21.2 x 8.07 x 18.22 in	53.2 x 21.4 x 50.3 cm 20.9 x 8.4 x 19.8 in
Weight With Stand	5.6 kg 12.3 lb	6.6 kg 14.6 lb
Weight Head Only	3.1 kg 6.8 lb	3.7 kg 8.2 lb
Certification and Compliance	CEL Grade 1, ENERGY STAR®, EPEAT® Gold, Microsoft WHQL (Win 7, Win 10), TCO, TCO Edge	CEL Grade 1, ENERGY STAR®, EPEAT® Gold, Microsoft WHQL (Win 7, Win 10), TCO, TCO Edge
Warranty	3-year standard limited warranty	3-year standard limited warranty
Zero Bright Dot Guarantee ³	Yes	Yes



COMPARISON GUIDE

CONTENTS & NAVIGATION

2-6

HP Z Displays

7-8

HP DreamColor

9

HP Z Specialty

10

Sources and legal disclaimers

HP Z DISPLAYS



	HP Z24n G2	HP Z27n G2
Overview	Be a productive powerhouse with the sleek 24 and 27-inch diagonal displays. These virtually seamless displays are factory-tested for reliability and longevity with integrated color calibration, uninterrupted multi-screen ¹ tiling, and expansive device connections, including USB-C™.	
Panel Type	IPS	IPS
Viewable Image Area (diagonal)	24-inch	27-inch
Native Resolution	1920 x 1200 @ 60 Hz	2560 x 1440 @ 60 Hz
Aspect Ratio	16:10	16:9
Brightness	300 cd/m ²	350 cd/m ²
Contrast Ratio	1,000:1 Static 10,000,000:1 Dynamic	1,000:1 Static 10,000,000:1 Dynamic
Anti-Glare	Yes	Yes
Factory Color Calibrated	Yes	Yes
Color Gamut	99% sRGB	>99% sRGB
Color Depth	8-bit (6+2 FRC) 16.7 Million colors	True 8-bit 16.7 Million colors
Response Rate ² (gray to gray)	5 ms	5 ms
Viewing Angle	178° x 178°	178° x 178°
Video Input Signal	(1) DisplayPort™ over USB-C™ (1) DisplayPort™ 1.2 (1) HDMI 1.4 (1) DVI-D	(1) DisplayPort™ over USB-C™ (1) DisplayPort™ 1.2 (1) HDMI 1.4 (1) DVI-D
HDCP Support	DisplayPort™, HDMI	DisplayPort™, HDMI
USB Ports	(2) USB C™ 3.1 1 Rear, 15 W Power Delivery ⁴ (see Video Input Signal) 1 Side, 10 W Power Delivery ⁴ (2) USB 3.0	2) USB C™ 3.1 1 Rear, 15 W Power Delivery ⁴ (see Video Input Signal) 1 Side, 10 W Power Delivery ⁴ (2) USB 3.0
Adjustability	Height: 150 mm Tilt: -5° to + 22° Swivel: +/- 45° Pivot: 90°, CW and CCW	Height: 150 mm Tilt: -5° to + 22° Swivel: +/- 45° Pivot: 90°, CW and CCW
Dimensions (W x D x H) Unpacked With Stand Maximum Height	53.2 x 21.4 x 50.3 cm 20.9 x 8.4 x 19.8 in	61.3 x 21.4 x 50.9 cm 24.1 x 8.4 x 20 in
Weight With Stand	7.2 kg 15.9 lb	8 kg 17.6 lb
Weight Head Only	4.4 kg 9.7 lb	5.2 kg 11.5 lb
Certification and Compliance	CEL Grade 1, ENERGY STAR®, EPEAT® Gold, Microsoft WHQL (Win 7, Win 10), TCO, TCO Edge	CEL Grade 1, ENERGY STAR®, EPEAT® Gold, Microsoft WHQL (Win 7, Win 10), TCO, TCO Edge
Warranty	3-year standard limited warranty	3-year standard limited warranty
Zero Bright Dot Guarantee ³	Yes	Yes



CONTENTS & NAVIGATION

2-6

HP Z Displays

7-8

HP DreamColor

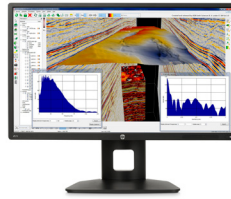
9

HP Z Specialty

10

Sources and legal disclaimers

HP Z DISPLAYS



	HP Z27s	HP Z27
Overview	Join the Ultra High Definition movement and expand your visual workspace with the HP Z27s 27-inch IPS UHD Display, which delivers an extra-large screen with UHD/4K ⁵ presentation and flexible connectivity and comfort features.	Experience extraordinary, precise color and see more of your projects at one time on a display with stunning 4K ⁵ resolution.
Panel Type	IPS	IPS
Viewable Image Area (diagonal)	26.93-inch	27-inch
Native Resolution	3840 x 2160 @ 60 Hz ⁶	3840 x 2160 @ 60 Hz ⁶
Aspect Ratio	16:9	16:9
Brightness	300 cd/m ²	350 cd/m ²
Contrast Ratio	1,000:1 Static 5,000,000:1 Dynamic	1,300:1 Static 5,000,000:1 Dynamic
Anti-Glare	Yes	Yes
Factory Color Calibrated	Yes	Yes
Color Gamut	100% sRGB	99% sRGB 100% BT.709
Color Depth	10-bit (8+2 FRC) 1.07 Billion colors	10-bit (8+2 FRC) 1.07 Billion colors
Response Rate ² (gray to gray)	6 ms	8 ms
Viewing Angle	178° x 178°	178° x 178°
Video Input Signal	(1) DisplayPort™ 1.2 (1) Mini DisplayPort™ 1.2 (1) HDMI 1.4 (1) HDMI 1.4 (MHL 2.0)	(1) DisplayPort™ 1.2 over USB-C™ (1) DisplayPort™ 1.2 (1) Mini DisplayPort™ 1.2 (1) HDMI 2.0
HDCP Support	All Inputs	All Inputs
USB Ports	(4) USB 3.0 Hub	(2) USB-C™ 3.1 1 Rear, 65 W Power Delivery ⁴ (see Video Input Signal) 1 Side, 15 W Power Delivery ⁴ (3) USB 3.0 Hub
Adjustability	Height: 120 mm (+/- 3 mm) Tilt: -5 to +20° Swivel: +/- 45° (+/- 2°) Pivot: 90°	Height: 120 mm Tilt: -5° to + 20° Swivel: +/- 45° (+/- 2°) Pivot: 90°
Dimensions (W x D x H) Unpacked With Stand Maximum Height	62.56 x 24.24 x 53.59 cm 24.62 x 9.54 x 21.1 in	69.03 x 26.64 x 60.1 cm 27.18 x 10.49 x 23.66 in
Weight With Stand	7.8 kg 17.2 lb	9.98 kg 20.68 lb
Weight Head Only	5.4 kg 11.8 lb	6.21 kg 13.69 lb
Certification and Compliance	CEL Grade 2, Microsoft WHQL (Win 7, Win 8), TCO	CEL Grade 2, ENERGY STAR®, EPEAT® Gold, Microsoft WHQL (Win 7, Win 8, Win 10), TCO
Warranty	3-year standard limited warranty	3-year standard limited warranty
Zero Bright Dot Guarantee ³	Yes	Yes



CONTENTS & NAVIGATION

2-6

HP Z Displays

7-8

HP DreamColor

9

HP Z Specialty

10

Sources and legal disclaimers

HP Z DISPLAYS



	HP Z32	HP Z43
Overview	Experience extraordinary, precise color and see more of your projects at one time on a display with stunning 4K ⁵ resolution.	
Panel Type	IPS	IPS
Viewable Image Area (diagonal)	31.5-inch	42.5-inch
Native Resolution	3840 x 2160 @ 60Hz ⁶	3840 x 2160 @ 60Hz ⁶
Aspect Ratio	16:9	16:9
Brightness	350 cd/m ²	350 cd/m ²
Contrast Ratio	1,300:1 Static 5,000,000:1 Dynamic	1,000:1 Static 5,000,000:1 Dynamic
Anti-Glare	Yes	Yes
Factory Color Calibrated	Yes	No
Color Gamut	99% sRGB 100% BT.709	96% sRGB
Color Depth	10-bit (8+2 FRC) 1.07 Billion colors	True 10-bit 1.07 Billion colors
Response Rate ² (gray to gray)	14 ms	5 ms
Viewing Angle	178° x 178°	178° x 178°
Video Input Signal	(1) DisplayPort™ over USB-C™ (1) DisplayPort™ 1.2 (1) Mini DisplayPort™ 1.2 (1) HDMI 2.0	(1) DisplayPort™ over USB-C™ (1) DisplayPort™ 1.2 (1) Mini DisplayPort™ 1.2 (1) HDMI 2.0
HDCP Support	All Inputs	All Inputs
USB Ports	(2) USB-C™ 3.1 1 Rear, 65 W Power Delivery ⁴ (see Video Input Signal) 1 Side, 15 W Power Delivery ⁴ (3) USB 3.0 Hub	(2) USB-C™ 3.1 1 Rear, 65 W Power Delivery ⁴ (see Video Input Signal) 1 Side, 15 W Power Delivery ⁴ (3) USB 3.0 Hub
Adjustability	Height: 120 mm (+/- 3 mm) Tilt: -5° to + 20° Swivel: +/- 45° (+/- 2°)	Tilt: -5° to + 10° Swivel: +/- 20°
Dimensions (W x D x H) Unpacked With Stand Maximum Height	71.45 x 24.8 x 56.44 cm 28.13 x 9.76 x 22.22 in	97.21 x 24.0 x 61.9 cm 38.27 x 9.44 x 24.37 in
Weight With Stand	12.16 kg 26.81 lb	16.95 kg 37.38 lb
Weight Head Only	7.59 kg 16.733 lb	12.45 kg 27.45 lb
Certification and Compliance	CEL Grade 2, ENERGY STAR®, EPEAT® Gold, Microsoft WHQL (Win 7, Win 8, Win 10), TCO	CEL Grade 1, Microsoft WHQL (Win 7, Win 8, Win 8.1, Win 10)
Warranty	3-year standard limited warranty	3-year standard limited warranty
Zero Bright Dot Guarantee ³	Yes	Yes



COMPARISON GUIDE

CONTENTS & NAVIGATION

2-6

HP Z Displays

7-8

HP DreamColor

9

HP Z Specialty

10

Sources and legal disclaimers

HP DREAMCOLOR



	HP DreamColor Z24x G2	HP DreamColor Z27x G2 Studio Display
Overview	Enjoy pure, consistent color accuracy from design to production with push-button color space selection and easy color calibration on the amazingly affordable 24-inch diagonal HP DreamColor Z24x G2 Display.	Boost your creativity with the HP DreamColor Z27x G2 Studio Display. Designed for the world's color professionals, the spacious 27" diagonal Quad HD display has award-winning HP DreamColor Technology, an expansive color gamut, built-in colorimeter, and workflow management tools.
Panel Type	IPS	High Performance IPS
Viewable Image Area (diagonal)	24-inch	27-inch
Native Resolution	1920 x 1200 @ 60 Hz	2560 x 1440 @ 60 Hz
Aspect Ratio	16:10	16:9
Brightness	350 cd/m ²	250 cd/m ²
Contrast Ratio	1,000:1 Static 5,000,000:1 Dynamic	1000:1 Minimum 1500:1 Typical
Anti-Glare	Yes	Yes
Factory Color Calibrated	Yes	Yes
Color Gamut	100% sRGB 100% BT.709 99% Adobe RGB 97% DCI-P3	100% sRGB 100% BT.709 99% AdobeRGB 98% of DCI-P3
Color Depth	10-bit (8+2 FRC) 1.07 Billion colors	True 10-bit 1.07 Billion colors
Response Rate ² (gray to gray)	6 ms	10.2 ms
Viewing Angle	178° x 178°	178° x 178°
Video Input Signal	(1) DisplayPort™ 1.2 (1) HDMI 1.4 (1) DVI-D	(1) DisplayPort™ over USB-C™ (2) DisplayPort™ 1.2 (2) HDMI 2.0
HDCP Support	All Inputs	All Inputs
USB Ports	(4) USB 3.0 Hub	(1) USB-C™ 3.1 1 Rear, 15 W Power Delivery ⁴ (see Video Input Signal) (4) USB 3.0 Hub
Adjustability	Height: 151 mm Tilt: -5° to + 20° Swivel: +/- 45° (+/- 2°) Pivot: 90°	Height: 201 mm Tilt: -5° to + 20° Swivel: +/- 45°
Dimensions (W x D x H) Unpacked With Stand Maximum Height	55.94 x 23.8 x 52.5 cm 22.0 x 9.4 x 20.7 in	64.1 x 24.8 x 57.28 cm 25.28 x 9.76 x 22.55 in
Weight With Stand	6.98 kg 15.4 lb	12.1 kg 26.6 lb
Weight Head Only	4.73 kg 10.4 lb	7.4 kg 16.3 lb
Certification and Compliance	ENERGY STAR®, Microsoft WHQL (Win 7, Win 8, Win 10), TCO, TCO-Edge	CEL Grade 3, Microsoft WHQL (Win 10)
Warranty	3-year standard limited warranty	3-year standard limited warranty
Zero Bright Dot Guarantee ³	Yes	Yes



CONTENTS & NAVIGATION

2-6

HP Z Displays

7-8

HP DreamColor

9

HP Z Specialty

10

Sources and legal disclaimers

HP DREAMCOLOR



HP DreamColor Z31x Studio Display

Overview	Designed for the world's elite color professionals, the award-winning HP DreamColor Technology brings the industry's boldest visions to life. Captivate with Cinema 4K ⁵ resolution, an expansive color gamut for remarkably vivid colors, integrated colorimeter and custom-tailored management tools.
Panel Type	High Performance IPS
Viewable Image Area (diagonal)	31.1-inch
Native Resolution	4096 x 2160 @ 60 Hz ⁷
Aspect Ratio	17:9
Brightness	250 cd/m ^{2,8}
Contrast Ratio	1,200:1 Minimum 1,500:1 Typical
Anti-Glare	Yes
Factory Color Calibrated	Yes
Color Gamut	100% sRGB 100% BT.709 100% AdobeRGB 99% DCI-P3 80% BT.2020
Color Depth	True 10-bit 1.07 Billion colors
Response Rate ² (gray to gray)	8.5 ms
Viewing Angle	178° x 178°
Video Input Signal	(1) DisplayPort™ over USB-C™ (2) DisplayPort™ 1.2 (2) HDMI 2.0
HDCP Support	All Inputs
USB Ports	(2) USB-C™ 3.1 1 Rear, 65 W Power Delivery ⁴ (see Video Input Signal) 1 Side, 15 W Power Delivery ⁴ (4) USB 3.0 Hub
Adjustability	Height: 144 mm Tilt: -5° to + 20° Swivel: +/- 45°
Dimensions (W x D x H) Unpacked With Stand Maximum Height	73.80 x 24.80 x 56.60 cm 29.06 x 97.64 x 22.38 in
Weight With Stand	15 kg 33 lb
Weight Head Only	9.9 kg 21.83 lb
Certification and Compliance	CEL Grade 3, Microsoft WHQL (Win 10)
Warranty	3-year standard limited warranty
Zero Bright Dot Guarantee ³	Yes



COMPARISON GUIDE

CONTENTS & NAVIGATION

2-6

HP Z Displays

7-8

HP DreamColor

9

HP Z Specialty

10

Sources and legal disclaimers

HP Z SPECIALTY



HP Z38c

Overview	Completely immerse yourself in the expansive elegance of the HP Z38c Curved Display. Form meets function with crisp, panoramic views so you can stay focused on your work.
Panel Type	IPS
Viewable Image Area (diagonal)	37.5-inch
Native Resolution	3840 x 1600 @ 60Hz
Aspect Ratio	21:9
Brightness	300 cd/m ²
Contrast Ratio	1,000:1 Static 5,000,000:1 Dynamic
Anti-Glare	Yes
Factory Color Calibrated	Yes
Color Gamut	98% sRGB
Color Depth	10-bit (8+2 FRC) 1.07 Billion colors
Response Rate ² (gray to gray)	5 ms
Viewing Angle	178° x 178°
Video Input Signal	(1) DisplayPort™ over USB-C™ (1) DisplayPort™ 1.2 (1) HDMI 2.0
HDCP Support	All Inputs
USB Ports	(1) USB-C™ 3.1 1 Side, 65 W Power Delivery ⁴ (see Video Input Signal) (3) USB 3.0 Hub
Adjustability	Height: 120 mm Tilt: -5° to + 20° Swivel: +/- 45°
Dimensions (W x D x H) Unpacked With Stand Maximum Height	89.55 x 24.80 x 55.87 cm 35.26 x 9.76 x 22 in
Weight With Stand	13.8 kg 5.2 lb
Weight Head Only	9.8 kg 21.56 lb
Certification and Compliance	Microsoft WHQL (Win 7, Win 8, Win 10)
Warranty	3-year standard limited warranty
Zero Bright Dot Guarantee ³	Yes



COMPARISON GUIDE

CONTENTS & NAVIGATION

2-6

HP Z Displays

7-8

HP DreamColor

9

HP Z Specialty

10

Sources and legal disclaimers

For more details, go to: hp.com/go/zdisplay

SOURCES AND LEGAL DISCLAIMERS

¹ Additional displays required and sold separately.

² Product response time and can be adjusted in the display menu. See user guide for more information.

³ The HP Pixel Policy allows no bright sub-pixel defects for this display. For complete details, see <http://support.hp.com/us-en/document/c00288895>.

⁴ See product QuickSpecs for exact specifications.

⁵ 4K content required.

⁶ The video card must be capable of supporting 3840 × 2160 @ 60Hz to drive the monitor at the Preferred Mode.

⁷ The video card of the connected PC must be capable of supporting 4096 × 2160 at 60 Hz with 10-bit color using one DP, HDMI, or USB-C (DP alt mode).

⁸ HP applied uniformity compensation to each HP Z31x display, which brings the typical uniform peak luminance down to 250 cd/m² from a 350 cd/m² native peak brightness. Display supports luminance calibration up to 250 cd/m², reserving any luminance headroom for panel aging compensation.

⁹ 3D content is required for 3D performance.



LET US HELP YOU CREATE AMAZING BUSINESS
SOLUTIONS TODAY

LEARN MORE

© Copyright 2018 HP Development Company, L.P. The information contained herein is subject to change without notice. The only warranties for HP products and services are set forth in the express warranty statements accompanying such products and services. Nothing herein should be construed as constituting an additional warranty. HP shall not be liable for technical or editorial errors or omissions contained herein.

Performance specifications represent the typical specifications provided by HP's component manufacturers; actual performance may vary either higher or lower.

Microsoft and Windows are U.S. registered trademarks of the Microsoft group of companies. ENERGY STAR is a registered trademark owned by the U.S. Environmental Protection Agency.

4AA5-6357ENW, April 2018

