

Professional USB to Serial Adapter Hub with COM Retention

ICUSB2321X

ICUSB2322X

ICUSB2324X



*actual product may vary from photos



DE: Bedienungsanleitung - de.startech.com

FR: Guide de l'utilisateur - fr.startech.com

ES: Guía del usuario - es.startech.com

IT: Guida per l'uso - it.startech.com

NL: Gebruiksaanwijzing - nl.startech.com

PT: Guia do usuário - pt.startech.com

For the most up-to-date information, please visit: www.startech.com

FCC Compliance Statement

This equipment has been tested and found to comply with the limits for a Class B digital device, pursuant to part 15 of the FCC Rules. These limits are designed to provide reasonable protection against harmful interference in a residential installation. This equipment generates, uses and can radiate radio frequency energy and, if not installed and used in accordance with the instructions, may cause harmful interference to radio communications. However, there is no guarantee that interference will not occur in a particular installation. If this equipment does cause harmful interference to radio or television reception, which can be determined by turning the equipment off and on, the user is encouraged to try to correct the interference by one or more of the following measures:

- Reorient or relocate the receiving antenna.
- Increase the separation between the equipment and receiver.
- Connect the equipment into an outlet on a circuit different from that to which the receiver is connected.
- Consult the dealer or an experienced radio/TV technician for help.

Use of Trademarks, Registered Trademarks, and other Protected Names and Symbols

This manual may make reference to trademarks, registered trademarks, and other protected names and/or symbols of third-party companies not related in any way to StarTech.com. Where they occur these references are for illustrative purposes only and do not represent an endorsement of a product or service by StarTech.com, or an endorsement of the product(s) to which this manual applies by the third-party company in question. Regardless of any direct acknowledgement elsewhere in the body of this document, StarTech.com hereby acknowledges that all trademarks, registered trademarks, service marks, and other protected names and/or symbols contained in this manual and related documents are the property of their respective holders.

Table of Contents

Introduction.....	1
Package Contents.....	1
System Requirements	1
Hardware Guide	2
ICUSB2321X.....	2
ICUSB2322X.....	2
ICUSB2324X.....	3
Installation.....	4
Verifying Successful Installation.....	4
Configuration.....	5
Pinout.....	5
Specifications.....	6
Technical Support.....	7
Warranty Information.....	7

Introduction

Thank you for purchasing a StarTech.com Professional USB to RS-232 Serial Adapter. This innovative device offers a simple way to utilize serial devices using a USB port, and stores settings that are unique to the connected device in non-volatile memory (COM Port Retention), allowing you to retain the desired settings regardless of the USB Port to which the adapter is connected.

A cost-effective solution, the USB to Serial Adapter is ideal for connecting a serial modem, barcode scanner, PDA or any other device with serial sync to a host computer USB port, saving the expense of having to upgrade the peripheral device to USB compliance.

Package Contents

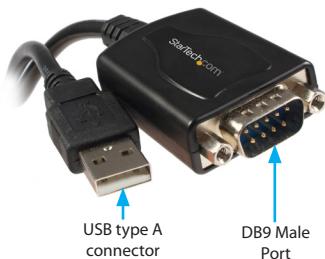
- 1 x USB to RS-232 Serial Adapter
- 1 x USB cable (ICUSB2322X/ ICUSB2324X only)
- 1 x Driver CD
- 1 x Instruction Manual

System Requirements

- USB enabled computer system with available USB port
- Microsoft® Windows® XP/ Server 2003/ Vista/ 7 (32/64-bit)

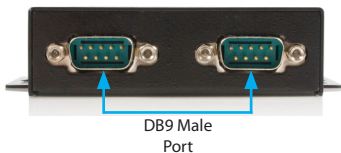
Hardware Guide

ICUSB2321X

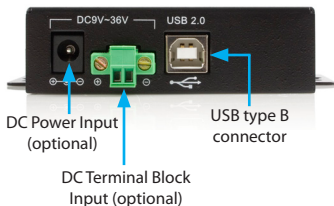


ICUSB2322X

Front Panel

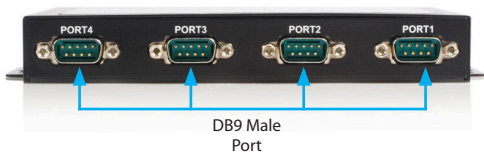


Rear Panel

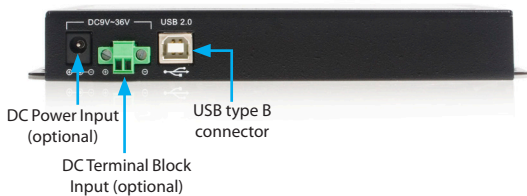


ICUSB2324X

Front Panel



Rear Panel



Installation

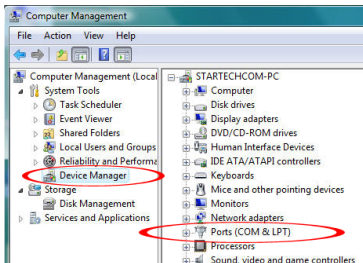
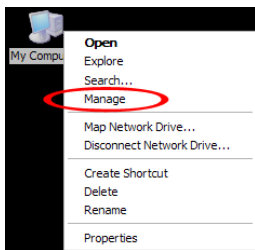
Please note: In order to ensure successful installation, please install the necessary software (included) on the intended host computer prior to connecting the USB Serial Adapter to the host.

1. Insert the Driver CD into the CD or DVD-ROM drive on the host computer.
2. Browse to, and execute the Setup.exe file.
3. When the installation progress launches, a welcome screen will appear. Click Next to proceed.
4. You will be asked to select a destination where the StarTech.com USB Serial Adapter will be installed. Please click on Browse to manually select a location. Otherwise, leave the default destination in place and click Next.
5. Please wait while the necessary drivers are copied and installed.
6. Once completed, a message indicating that the drivers have been successfully installed will appear. Please click Finish to conclude the software installation.
7. Connect the USB to Serial Adapter to the computer system. Windows will automatically detect the device and install the drivers.

Verifying Successful Installation

Windows XP/ Server 2003/ Vista/ 7

From the main desktop, right-click on "My Computer" ("Computer" in Vista/ 7), then select "Manage". In the Computer Management window, select "Device Manager" from the left window panel.



*all screenshots for reference only

Double-click on the "Ports (COM & LPT)" option. Additional COM port(s) should be visible. The port is automatically sequentially numbered by Windows, but can be changed through the "Properties" by right-clicking on the port.

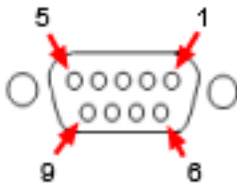
Configuration

To configure the USB Serial port:

1. In the Device Manager, double-click on "Ports (COM & LPT)" to expand.
2. Right-click on the newly added serial port and select "Properties".
3. From within the Properties window, the "Setting" tabs offer configuration options for the USB Serial Adapter functions:

Pinout

Pin	Signal
1	DCD
2	TxD
3	RxD
4	DTR
5	GND
6	DSR
7	RTS
8	CTS
9	RI



Specifications

	ICUSB2321X	ICUSB2322X	ICUSB2324X
Number of Ports	1	2	4
Host Interface	USB 2.0		
Connectors	1 x USB type A (male) 1 x DB9 (male)	1 x USB type B (female) 2 x DB9 (male) 1 x DC Power 1 x 2-pin Terminal Block	1 x USB type B (female) 4 x DB9 (male) 1 x DC Power 1 x 2-pin Terminal Block
Serial Protocol	RS-232		
Maximum Data Transfer Rate	230 Kbps		
Compatible Operating Systems	Windows 2000/ 7(32/64-bit)/ Vista(32/64-bit) / Server 2003(32/64-bit) / XP(32/64-bit)		
Regulatory Certifications	CE/ FCC/ ROHS		
Product Weight	33.4g	300g	593g
Product Dimensions (LxWxH)	207.0mm x 35.0mm x 135.0mm	113.0mm x 80.0mm x 25.0mm	165.2mm x 118.0mm x 25.0mm

Technical Support

StarTech.com's lifetime technical support is an integral part of our commitment to provide industry-leading solutions. If you ever need help with your product, visit www.startech.com/support and access our comprehensive selection of online tools, documentation, and downloads.

For the latest drivers/software, please visit www.startech.com/downloads

Warranty Information

This product is backed by a two year warranty.

In addition, StarTech.com warrants its products against defects in materials and workmanship for the periods noted, following the initial date of purchase. During this period, the products may be returned for repair, or replacement with equivalent products at our discretion. The warranty covers parts and labor costs only. StarTech.com does not warrant its products from defects or damages arising from misuse, abuse, alteration, or normal wear and tear.

Limitation of Liability

In no event shall the liability of StarTech.com Ltd. and StarTech.com USA LLP (or their officers, directors, employees or agents) for any damages (whether direct or indirect, special, punitive, incidental, consequential, or otherwise), loss of profits, loss of business, or any pecuniary loss, arising out of or related to the use of the product exceed the actual price paid for the product. Some states do not allow the exclusion or limitation of incidental or consequential damages. If such laws apply, the limitations or exclusions contained in this statement may not apply to you.

StarTech.com

Hard-to-find **made easy**®

Hard-to-find made easy. At StarTech.com, that isn't a slogan. It's a promise.

StarTech.com is your one-stop source for every connectivity part you need. From the latest technology to legacy products — and all the parts that bridge the old and new — we can help you find the parts that connect your solutions.

We make it easy to locate the parts, and we quickly deliver them wherever they need to go. Just talk to one of our tech advisors or visit our website. You'll be connected to the products you need in no time.

Visit **www.startech.com** for complete information on all StarTech.com products and to access exclusive resources and time-saving tools.

StarTech.com is an ISO 9001 Registered manufacturer of connectivity and technology parts. StarTech.com was founded in 1985 and has operations in the United States, Canada, the United Kingdom and Taiwan servicing a worldwide market.