

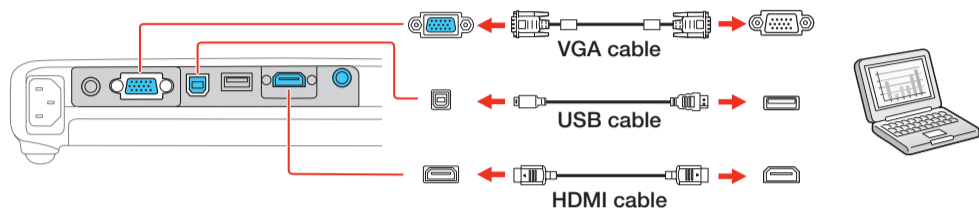
# Quick Setup

Before using the projector, make sure you read the safety instructions in the online *User's Guide*.

## Connect the projector

Choose from the following connections. See the sections below or the online *User's Guide* for details.

### Computer



### USB port

Connect the square end of a USB cable to the projector's **USB TypeB** (square) port. Connect the flat end of the cable to any USB port on your computer.

**Windows® 2000 SP4 or later:** After turning on the projector, follow the on-screen instructions to install the EPSON® USB Display software (**EMP\_UDSE.EXE**; only on first connection).

**Note:** If the software screen does not display automatically, open **My Computer** or **Computer**, then double-click **EPSON\_PJ\_UD**.

**Mac OS X 10.5.1 or higher:** After turning on the projector, the setup folder for USB Display appears in the Finder. Double-click **USB Display Installer** and follow the on-screen instructions to install the EPSON USB Display software (only on first connection).

### Monitor port

Connect one end of a VGA cable to the projector's **Computer** port, and the other end to your computer's monitor port. If you are using a laptop, switch it to external display (see "Troubleshooting"). You can also connect an audio cable.

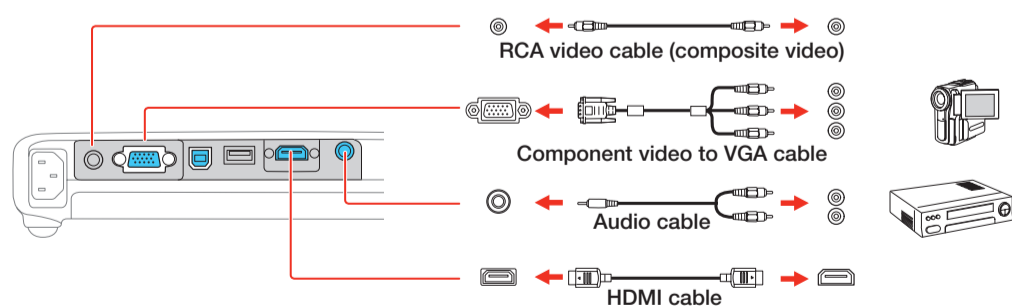
### HDMI port

Connect one end of an HDMI cable to the projector's **HDMI** port and the other end to an HDMI port on your computer.

**Note:** To connect a Mac that includes only a Mini DisplayPort or Mini-DVI port for video output, you need to obtain an adapter that allows you to connect to the projector's HDMI port. Contact Apple for compatible adapter options. Older Mac computers (2009 and earlier) may not support audio through the HDMI port.

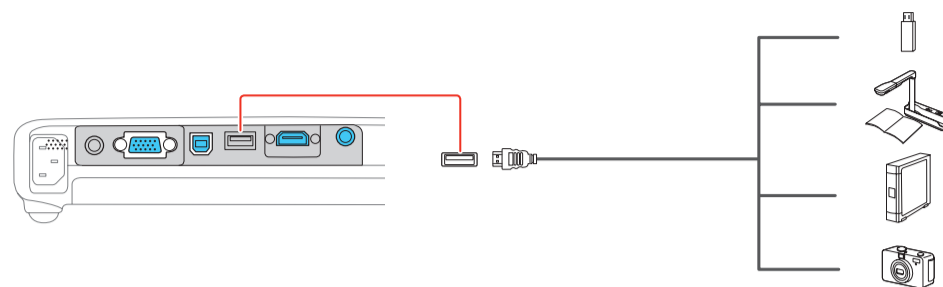
### Video device

Connect up to 3 video devices and use the **Source Search** button on the projector or remote control to switch between them.



### Camera, USB device, or EPSON Document Camera DC-06

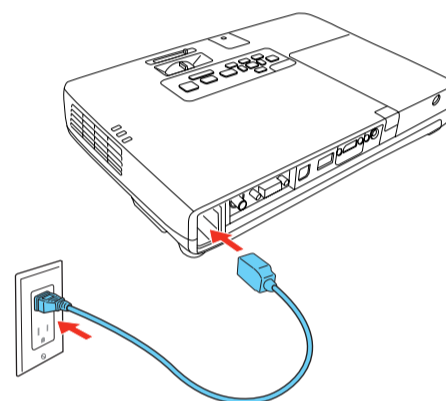
Connect a digital camera, USB flash drive, USB storage device, or EPSON document camera DC-06 to the projector's USB **TypeA** (flat) port.



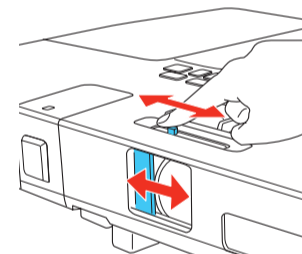
If you connect a digital camera, USB flash drive, or USB storage device, you can use the projector's Slideshow feature to project images. See the online *User's Guide* for details.

## Turn on your equipment

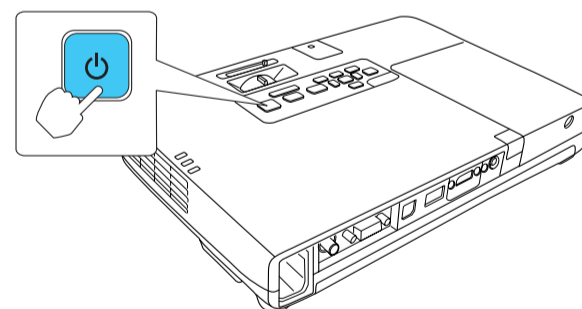
- 1 Turn on your computer or video source.
- 2 Plug in the projector. The power light on the projector turns orange.



- 3 Open the **A/V Mute** slide all the way.



- 4 Press the power button on the projector or remote control. The projector beeps, the power light flashes green, and then stays on.



**Note:** To shut down the projector, press the power button twice, then unplug it. You don't have to wait for the projector to cool down.

- 5 The default language of the menu system is **English**. To select another language, press the **Menu** button on the remote control. Select **Extended** and press . Select **Language** and press . Select your language and press . Press the **Menu** button to exit the menu system.

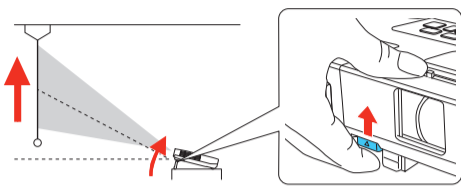


# Adjust the image

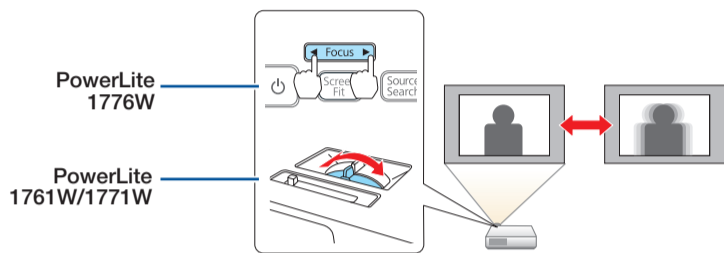
- 1 If you don't see an image, press the **Source Search** button on the projector or the remote control to select the image source.

**Note:** If you still see a blank screen or have other display problems, see the troubleshooting tips on the back of this sheet.

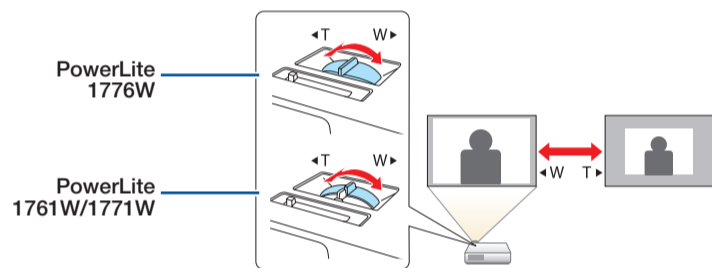
- 2 To raise the image, press the foot release button and lift the front of the projector. Release the button to lock the foot in position.




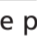


- 3 **PowerLite 1776W:** Press the **Focus** buttons to sharpen the image.  
**PowerLite 1761W/1771W:** Rotate the focus ring to sharpen the image.



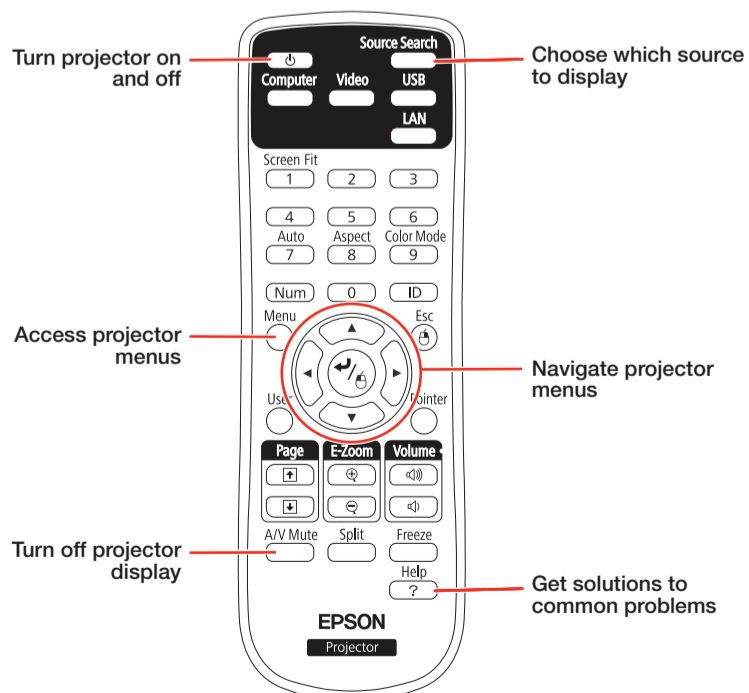
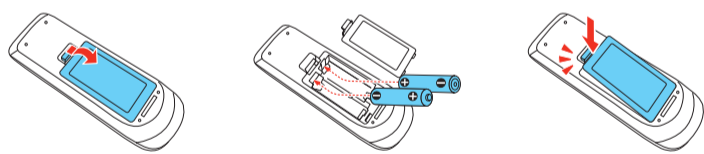
- 4 Turn the zoom ring to reduce or enlarge the image.



- 5 Your projector automatically adjusts images that look like  or , but if necessary you can press the  or  buttons on the projector to correct it.

# Using the remote control

Make sure the batteries are installed as shown (two AA batteries).

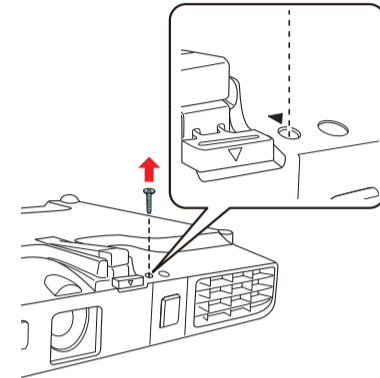


For more information on using the remote control, see the online *User's Guide*.

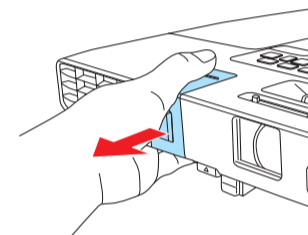
# Project wirelessly

Follow the steps here to connect the projector wirelessly over an 802.11n, 802.11g, or 802.11b wireless network. Your computer must have a wireless card or built-in wireless interface, and be running Windows 7, Windows Vista®, Windows XP Professional x64, Windows XP, or Windows 2000, or Mac OS X 10.4 to 10.7.

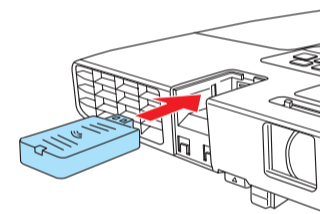
- 1 Turn off the projector and unplug the power cord.
- 2 To install the wireless LAN module, turn the projector over and remove the screw securing the wireless LAN module cover.



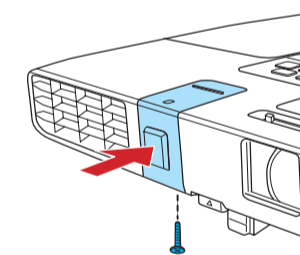
- 3 Remove the wireless LAN module cover.



- 4 Insert the wireless LAN module into the port.



- 5 Replace the cover and secure it using the screw.

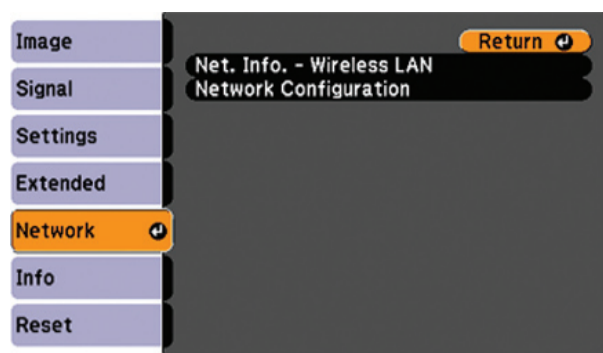


- 6 Plug in and turn on the projector.

- 7 To configure your projector for your wireless network, do one of the following:

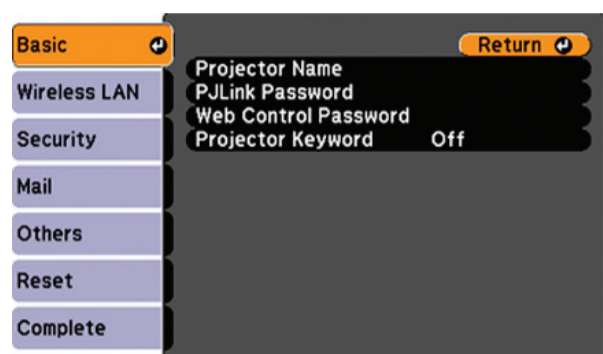
- If you're using the optional Quick Wireless Connection USB key, insert it into the projector's USB **Type A** port, wait for the displayed message, remove the key, and connect it to a USB port on your computer. Follow the on-screen instructions to install the driver, then run your presentation. For details, see the online *User's Guide*.
- If you're not using the key, continue with the following steps.

- 8 Press the **Menu** button on the remote control, select the **Network** menu, and press .



- 9 Choose **Network Configuration** and press .

- 10 Select the **Basic** menu and press .

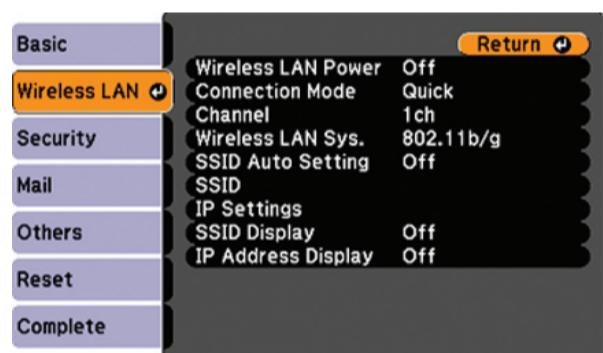


- 11 Select the **Projector Name** setting, press , and enter a name (up to 16 characters long) to identify your projector over the network.

Use the displayed keyboard to enter characters. Press the arrow buttons on the remote control to highlight the characters and press to select them.

**Note:** See the online User's Guide for information on adding passwords.

- 12 Select the **Wireless LAN** menu and press .



- 13 Select the **Connection Mode** setting, press , and choose one of these options:

- **Quick** to connect the projector to one computer on the network (Ad Hoc)
- **Advanced** to connect the projector to multiple computers on the network (infrastructure)

- 14 If you selected **Quick** connection mode, select the **Channel** setting for your wireless network and turn on the **SSID Auto Setting** setting.

- 15 Select the type of wireless network you are using as the **Wireless LAN Sys.** setting.

- 16 If you selected **Advanced** connection mode, enter your network SSID (up to 32 characters) as the **SSID** setting.

- 17 If your network assigns addresses automatically, select **IP Settings** and turn on the **DHCP** setting. If not, turn off the **DHCP** setting and enter the projector's **IP Address**, **Subnet Mask**, and **Gateway Address**, as needed.

- 18 To prevent the SSID and IP address from appearing on the network standby screen, set the **SSID Display** and/or **IP Address Display** settings to **Off**.

- 19 When you are finished, select **Complete** and press , then press again to save your settings.

- 20 Press the **Menu** button to exit the menu system.

- 21 See "Install network software" for additional instructions.

## Install network software

Install the EasyMP® Network Projection software on each computer that will project over the network. Use the CD labeled *Epson Projector Software* to install the program.

For instructions on installing and using your network software, click the icon on your desktop to access the online *EasyMP Network Projection Operation Guide* (requires an Internet connection). If you don't see the EasyMP Network Projection Guide icon, you can install it from the projector CD or go to the Epson website, as described below.

To monitor and control your projector over the network, download and install the EasyMP Monitor software and manual from the Epson support web site. You can install a link to the downloads page from the projector CD or go to the Epson website, as described below.

## Troubleshooting

If you see a blank screen or the **No signal** message after turning on your computer or video device, check the following:

- Make sure the power light on the projector is green and not flashing, and the **A/V Mute** slide is open.
- Press the **Source Search** button on the projector or the remote control to switch to the correct image source, if necessary.
- If you're using a Windows laptop, press the function key on your keyboard that lets you display on an external monitor. It may be labeled **CRT/LCD** or have an icon such as . You may have to hold down the **Fn** key while pressing it (such as **Fn + F7**). Wait a moment for the display to appear.
- If you're using a Mac laptop, open **System Preferences** and select **Displays**. Select the **VGA Display** or **Color LCD** option if necessary, then click the **Arrange** or **Arrangement** tab, and select the **Mirror Displays** check box.

## Where to get help

### Manuals

For more information about using the projector, click the icons on your desktop to access the manuals (may require an Internet connection). If you don't have icons to the manuals, you can install them from the projector CD or go to the Epson website, as described below.

### Telephone Support services

To use the EPSON® PrivateLine® Support service, call (800) 637-7661 and enter the PIN on the EPSON PrivateLine Support card included with your projector. This service is available 6 AM to 6 PM, Pacific Time, Monday through Friday, for the duration of your warranty period. You may also speak with a projector support specialist by dialing:

**US:** (562) 276-4394, 6 AM to 8 PM, Pacific Time, Monday through Friday, and 7 AM to 4 PM, Pacific Time, Saturday

**Canada:** (905) 709-3839, 6 AM to 8 PM, Pacific Time, Monday through Friday

Days and hours of support are subject to change without notice. Toll or long distance charges may apply.

### Internet support

Visit [www.epson.com/support](http://www.epson.com/support) (U.S.) or [www.epson.ca/support](http://www.epson.ca/support) (Canada) for solutions to common problems. You can download utilities and documentation, get FAQs and troubleshooting advice, or e-mail Epson.

## Registration

Register today to get product updates, special promotions, and customer-only offers. You can use the CD included with your projector or register online at [www.epson.com/webreg](http://www.epson.com/webreg).

# Optional accessories

For a list of optional accessories, see the online *User's Guide*.

You can purchase screens, carrying cases, or other accessories from an Epson authorized reseller. To find the nearest reseller, call 800-GO-EPSON (800-463-7766). Or you can purchase online at [www.epsonstore.com](http://www.epsonstore.com) (U.S. sales) or [www.epson.ca](http://www.epson.ca) (Canadian sales).

**EPSON**<sup>®</sup>  
EXCEED YOUR VISION



EPSON, EasyMP, and PowerLite are registered trademarks, and EPSON Exceed Your Vision is a registered logomark of Seiko Epson Corporation. PrivateLine is a registered trademark of Epson America, Inc.

General Notice: Other product names used herein are for identification purposes only and may be trademarks of their respective owners. Epson disclaims any and all rights in those marks.

This information is subject to change without notice.

© 2012 Epson America, Inc. 2/12  
Printed in XXXXXX

CPD-36695