



NVIDIA GEFORCE Graphics Card

Quick Installation Guide



Software Installation

English	01
French	02
German	03
Italian	04
Japanese	05
Polish	06
Portuguese	07
Romanian	08
Russian	09
Spanish	10
Turkish	11

Graphics Card Utility Introduction

ThunderMaster	12
---------------	----

Quick Driver Installation

We highly recommend Windows 8/Windows 7/Windows Vista users to follow the installation procedure:

Step 1 Insert the Driver DVD into DVD-ROM drive.



Step 2

The AutoPlay will run and the screen will show as following:
Please select **"Run Nvsetup.exe"**



Step 3

The Installation screen will show as following:
Please select **"Install Drivers"** to continue.



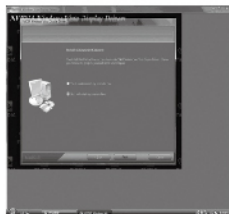
Step 4

The Windows is installing the drivers, please press **"Next"** to continue:



Step 5

The driver installation will take some time, please wait:



Step 6

The driver installation finish, please select **"Yes"** and press **"Finish"** button to complete the installation procedure. And, restart your computer.

Installation rapide des pilotes

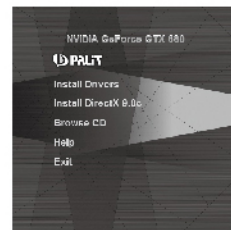
Nous recommandons vivement aux utilisateurs de Windows 8 / Windows 7 / Windows Vista de suivre la procédure d'installation.

Etape 1 Insérez le DVD de pilotes dans le Blu-ray Disc ou le DVD-Rom.



Etape 2

Le lancement automatique démarre, sélectionnez **« Lancez Nvsetup.exe »**.



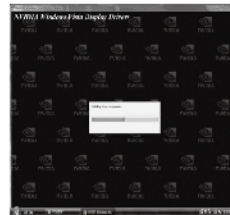
Etape 3

Cliquez sur **« Install Drivers »**.



Etape 4

L'installation des pilotes commence, cliquez sur **« Suivant »** pour continuer.



Etape 5

L'installation des pilotes peut prendre un certain temps, patientez.



Etape 6

L'installation est terminée, sélectionnez **« oui »** et appuyez sur le bouton **« Fin »** pour finaliser la procédure d'installation. Redémarrez votre ordinateur.

Schnell Installation

Wir empfehlen Windows 8/Windows 7/Windows Vista Nutzern nachfolgenden Installationsvorgang:

Schritt 1 Legen Sie die Treiber DVD in Ihr Blu-ray Disc oder DVD-ROM Laufwerk ein.



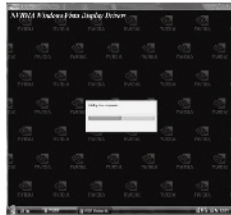
Schritt 2
Autostart beginnt. Auf dem Bildschirm erscheint folgende Meldung: Bitte **“Run Nvsetup.exe”** auswählen.



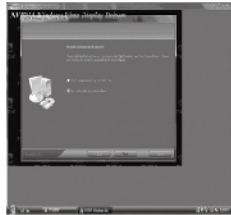
Schritt 3
Auf dem Bildschirm erscheint folgendes Bild. Bitte wählen Sie **“Treiber installieren”** um fortzufahren.



Schritt 4
Windows installiert den Treiber. Bitte drücken Sie auf **“Weiter”** um fortzufahren.



Schritt 5
Treiber Installation benötigt einen Moment. Bitte warten.



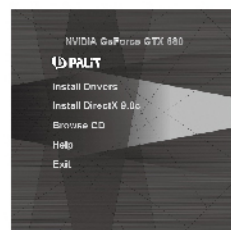
Schritt 6
Die Installation ist beendet. Bitte wählen sie **“Ja”** und drücken Sie **“Beenden”** um den Vorgang abzuschliessen. Bitte starten Sie den Rechner erneut.

Guida veloce all'installazione dei Driver:
Raccomandiamo agli utenti di Windows 8/Windows 7/Windows Vista di utilizzare la seguente procedura di installazione:

Punto 1 Inserire il DVD dei Driver in un lettore Blu-ray Disc o in un lettore DVD-ROM.



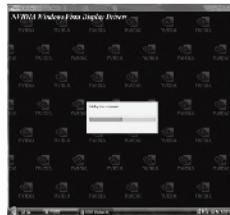
Punto 2
L'AutoPlay partirà in automatico e verrà visualizzata la seguente schermata: Per cortesia selezionare **“Run Nvsetup.exe”**



Punto 3
Verrà visualizzata la seguente schermata di installazione: Per cortesia selezionare **“Install Drivers”** per proseguire.



Punto 4
Verrà visualizzata la seguente schermata di installazione: Per cortesia selezionare **“Install Drivers”** per proseguire.



Punto 5
Per favore attendere che l'installazione dei driver sia completata, questa operazione potrebbe impiegare alcuni minuti:



Punto 6
L'installazione dei driver è completata, per cortesia selezionare **“Yes”** e premere sul pulsante **“Finish”** per completare la procedura d'installazione. Il computer eseguirà un riavvio.

Windows8/Windows7/Windows Vistaの場合
クイックドライバインストールを利用した、ドライバのインストールをお勧めいたします。

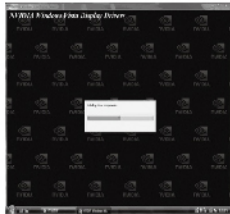
ステップ1 DVDまたはBlu-ray Discドライブにドライブ DVDを入れます。



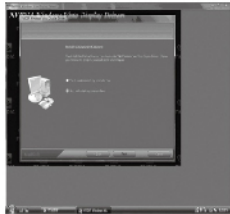
ステップ2
選択画面が表示されるので「Run Nvsetup.exe」をクリックします。



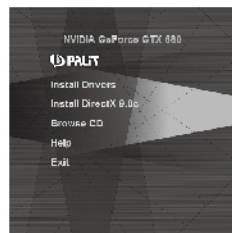
ステップ4
Windowsにドライバのインストールを開始します。「NEXT」をクリックします。



ステップ5
ドライバをインストールします。完了するまでお待ちください。



ステップ6
ドライバインストールが完了しました。「Yes」をクリックし、次に「Finish」をクリックします。インストールを完了するために、PCを再起動してください。



ステップ3
メニュー画面が表示されるので、「Install Drivers」をクリックします。

Szybka instalacja sterowników
Bardzo prosimy użytkowników systemów Windows 8/Windows 7/Windows Vista o wykonanie poniższej procedury instalacyjnej.

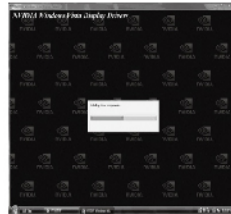
Krok 1 Włóż dysk instalacyjny DVD do stacji Blu-ray Disc lub DVD-ROM



Krok 2
Po pojawieniu się ekranu Autorun wybierz "Run Nvsetup.exe"



Krok 4
System Windows rozpocznie procedurę instalowania sterowników, wybierz „Next”, aby kontynuować



Krok 5
Instalacja sterowników może zająć kilka minut, w tym czasie na ekranie będzie wyświetlany wskaźnik postępu instalacji



Krok 3
Po pojawieniu się ekranu instalacyjnego wybierz „Install Drivers”



Krok 6
Po zakończeniu instalacji sterowników wybierz “Yes”, a następnie „Finish”. Procedura instalacji zakończy się, a komputer automatycznie zrestartuje.

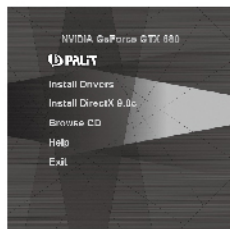
Instalação Rápida do Driver

Nós recomendamos aos usuários do Windows 8 / Windows 7 / Windows Vista que sigam estes procedimentos de instalação:

Etapa 1 Insira o DVD no drive de Blu-ray Disc ou DVD-ROM de seu computador.



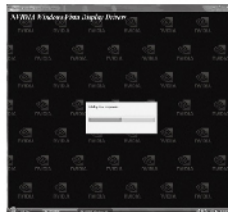
Etapa 2 A janela de diálogo abrirá automaticamente conforme figura ao lado. Por favor, selecione: “Executar (Run) Nvsetup.exe”.



Etapa 3 A tela do programa de instalação abrirá conforme figura ao lado. Por favor, selecione “Install Drivers” para continuar.



Etapa 4 O Windows está instalando os Drivers, por favor, pressione “Próximo (Next)” para continuar.



Etapa 5 A instalação do Driver levará algum tempo, por favor, aguarde.



Etapa 6 A instalação foi concluída, por favor, selecione “Sim (Yes)” e pressione o botão “Finalizar (Finish)” para completar o processo. Reinicie seu computador.

Ghid de Instalare Rapida a Driverului

Recomandam utilizatorilor de Windows 8 / Windows 7 / Windows Vista sa urmeze procedura de instalare:

Pasul 1 Se introduce DVD-ul ce contine driver-ul in unitatea Blu-ray Disc sau DVD-ROM.



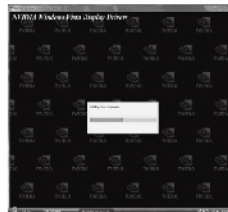
Pasul 2 AutoPlay va rula iar ecranul va arata dupa cum urmeaza: Se selecteaza “Run Nvsetup.exe”



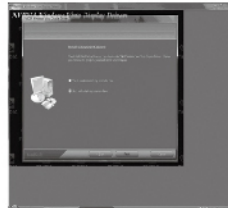
Pasul 3 Ecranul de instalare va arata astfel: Se selecteaza “Install Drivers” pentru a continua



Pasul 4 Windows-ul instaleaza driverele, se apasa “Next” pentru a continua:



Pasul 5 Se asteapta cateva momente pana cand driver-ul se va instala



Pasul 6 Instalarea driver-ului a luat sfarsit, se selecteaza “Yes” si se apasa “Finish” pentru a completa procesul de instalare. Se pornește din nou computerul.

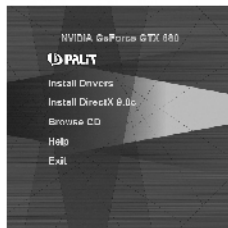
Быстрая установка драйверов

Мы настоятельно рекомендуем пользователям Windows 8/Windows 7/Windows Vista следовать следующей инструкции:

Шаг 1 Вставьте DVD с драйверами в Blu-ray Disc или DVD-ROM накопитель.



Шаг 2
Автоматически запустится приложение и появится окно, приведенное ниже:
Выберите **“Запустить (Run) Nvsetup.exe”**



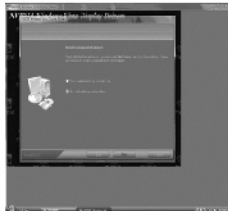
Шаг 3
На экране появится нижеследующее диалоговое окно:
Выберите **“Установить драйвер (Install Drivers)”** для продолжения.



Шаг 4
Windows произведет установку, нажмите Далее (“Next”):



Шаг 5
Установка драйвера займет некоторое время, пожалуйста подождите:



Шаг 6
После того, как установка завершится, выберите Да (“Yes”) и нажмите кнопку Готово (“Finish”) для завершения.
Перезагрузите компьютер.

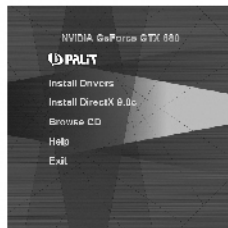
Instalación rápida del Driver

Recomendamos encarecidamente a los usuarios de Windows 8/Windows 7/Windows Vista que sigan el procedimiento de instalación:

Paso 1 Inserte el Driver DVD en el Blu-ray Disc o dispositivo DVD-ROM.



Paso 2
El AutoPlay se iniciará y la pantalla mostrará lo siguiente:
Por favor seleccione **“Run Nvsetup.exe”**



Paso 3
La pantalla de instalación mostrará lo siguiente:
Por favor seleccione **“Install Drivers”** para continuar.



Paso 4
La Ventana se encuentra instalando los drivers, por favor presione **“Next”** para continuar:



Paso 5
El dispositivo de instalación puede tomar algún tiempo, por favor espere:



Paso 6
Instalación del driver finalizada, por favor seleccione **“Yes”** y presione el botón **“Finish”** para completar el procedimiento de instalación. A continuación, reinicie su ordenador.

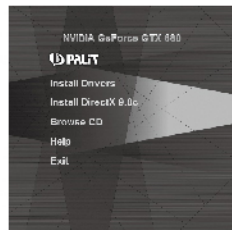
Hızlı Sürücü Kurulumu

Windows 8/Windows 7/Windows Vista kullanıcılarının aşağıdaki yükleme sürecini takip etmesi şiddetle önerilir.

Adım 1 Sürücü DVD'sini, DVD ya da Blu-ray Disc sürücünüze yerleştiriniz.



Adım 2 DVD otomatik olarak çalıştırılacaktır, karşınıza çıkacak olan ekranda **“Run Nvsetp.exe”**i seçiniz.



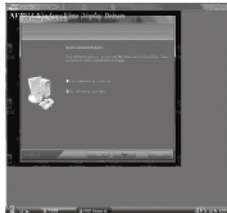
Adım 3 Kurulum ekranı yandaki gibi karşınıza çıkacaktır, devam etmek için **“Install Drivers”**i seçiniz.



Adım 4 Windows kurulumu başlayacaktır. Devam etmek için **“Next”**e basınız.



Adım 5 Sürücünün yüklenmesi biraz zaman alacaktır. Lütfen bekleyiniz.



Adım 6 Sürücü yüklemesini tamamlamak için ilk olarak **“Yes”**i sonra da **“Finish”**i seçiniz ve bilgisayarınızı yeniden başlatınız.

Graphics Card Utility Introduction**USING ThunderMaster****What is ThunderMaster?**

ThunderMaster is a utility program for the graphics card under Windows, and provides you to boost performance of the graphics card and to monitor the GPU information, which will only function correctly in conjunction with your new graphics adapter.

Most likely, you chose to install ThunderMaster during our initial display driver installation process. In this case the ThunderMaster icon is located on the desktop your Windows'.



If you have not yet installed ThunderMaster, you can do so now by running our DRIVER & UTILITY DISC

To launch ThunderMaster, simply click on the “P” icon in the System Tray, and a pop-up menu (UI) will appear on your screen.



ThunderMaster UI shows the important information such as GPU clock speed, memory clock speed, fan duty cycle and GPU temperature. And, a lot more features to provide advanced user more detail information for over-clocking. The newer version is easier to understand and easier to use, everything you need is on one single well organized page!

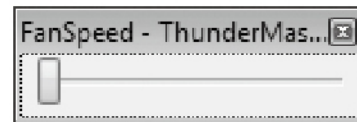
Main functions:

FAN DUTY Adjustment	to adjust cooling fan speed
OVER-CLOCKING	to adjust GPU core clock and memory clock
USER MODE	for user to store the favorite mode for different application
BIOS Loading	to store the BIOS of the graphics card
SETTING	to change from the ThunderMaster's original setting by their requirement
STATUS	to shows the current value of the graphics card
INFO (INFORMATION)	to show the information of your graphics card
RESTORE	to reset all the setting or adjustment to original setting
OTHERS	

FAN DUTY Adjustment

Users can adjust the fan's speed of the graphics card by push the "ADJUST" button. If you try to lower the temperature of the GPU while playing games, please draw the slider bar to higher "FAN DUTY" to increase fan speed. Or, if you want to lower the fan speed to keep lower acoustic level, set fan to lower "FAN DUTY" to decrease the fan speed.

For normal operation, please set back to "AUTO" fan control mode that will automatically adjust the fan's speed to keep the GPU temperature under safe level.



The GPU temperature is shown in **C** (Celsius). Or, you can change it to show in **F** (Fahrenheit).

For any operation condition, please keep the GPU temperature under 90 degree C.

Graphics Card Utility Introduction

OVER-CLOCKING

To adjust the core speed or memory speed of the card, you need to push the **“Overclocker”** button and go into over-clocking page.

In order to adjust the “Graphics clock”, “Memory clock”, “Core Voltage”, “Power Limit” and “Frame Rate Target”, please draw the slider bars to over-clocking the board.

You can change both the core clock and/or the memory clock settings independently. The higher the clock settings, the faster your graphics card will work. For the GTX 600 series, increase “Power Limit” may increase the performance as well.

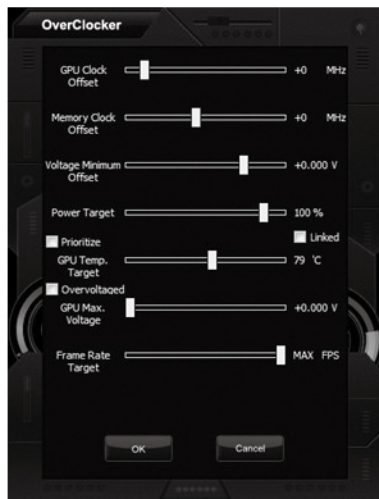
For GTX 700 series (and above), the “Power Target” and “GPU Temperature Target” can be adjusted separately by de-activate the “Linked” button. Change the GPU Temperature Target to higher value to allow GPU to be over-clocked easier. Activate the “Prioritize” to allow GPU run slower to keep the temperature not going too high in order to get lower noise level.

Push “Overvoltage” button to allow manually increase GPU’s voltage. Increasing the voltage, the GPU can be over-clocked easier and the temperature will go higher as well.

Please note that increasing GPU voltage may damage the GPU and impact long term reliability!

Please note that not every board can be over-clocked much, there will be different limitation to over-clocking.

You also can control “Frame Rate Target”. For example, set FPS target at 90 FPS (other than MAX) that the graphics will not run top speed to save some power consumption and still have very good gaming quality.



Notice: Do take care while doing over-clocking

Change the speed in small increments only, i.e. in increments of 5~10 MHz. Then check if your games are still running correctly. If you start seeing abnormal frames on your screen, or your 3D graphics appear in a “broken” fashion, you have exceeded the board’s capabilities, and you must revert to your previous setting.

USER MODE

“USER MODE” is used for user to preset up to 5 different modes for different operation condition. After carefully adjusting the fan’s duty, core speed and memory speed, press “SAVE” button and then press one of those five buttons to save for your favorite modes. To select the user mode, you just press the number of the mode you save.

Step-1 Adjust the settings

Step-2 Click “SAVE” button

Step-3 Choose user mode number (1~5) to save

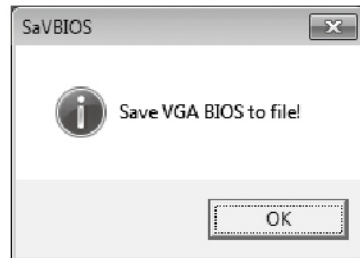
BIOS LOADING

This function is for users to load the VGA bios and save in the system for future usage.

Just press **“BIOS”** button to start:

Then, system will ask you the file name to save file BIOS file.

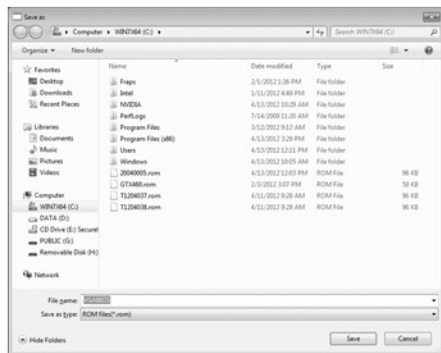
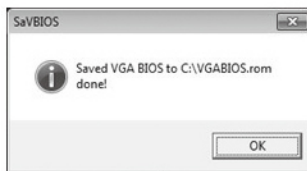
You just enter the file name then system start copying the BIOS to the file.



Graphics Card Utility Introduction

Please wait...

It will take within one minute to copy the BIOS file.



SETTING

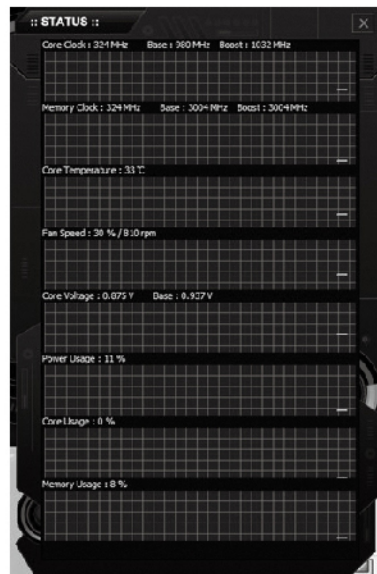
Users can make some change from the ThunderMaster's original setting by their requirement.

- Display the "current clock speed" on the UI or "GPU base clock" (or 3D clock for 500 series)
- Load ThunderMaster while Windows startup or not
- Enable ToolTips



STATUS

It shows the current value such as core clock speed, memory clock speed, fan speed (duty cycle), core voltage and others. Users can check those values any time while running application software.



INFO (information)

This page gives you a very detailed status report on your card's current operating environment, such as the model, current display settings, current software and driver versions, etc. This could be helpful in the event you run into a problem and need to talk to technical support.



RESTORE

This function is to reset all the setting or adjustment to original setting.

Others

From the UI (user interface), users can

- Press NVIDIA LOGO to go to NVIDIA CONTROL PANEL by their requirement.
- Press Palit LOGO to link to Palit website
- Select different GPU under multiple-GPU configuration



Quit

Quit from the UI (user interface), user can press

"**Restore default & Quit**" if you want to discard any change and keep the board to run with the factory setting.

Or, press

"**Keep current & Quit**" if you want to keep the changes you have made for the board.

www.palit.biz

M-PA08