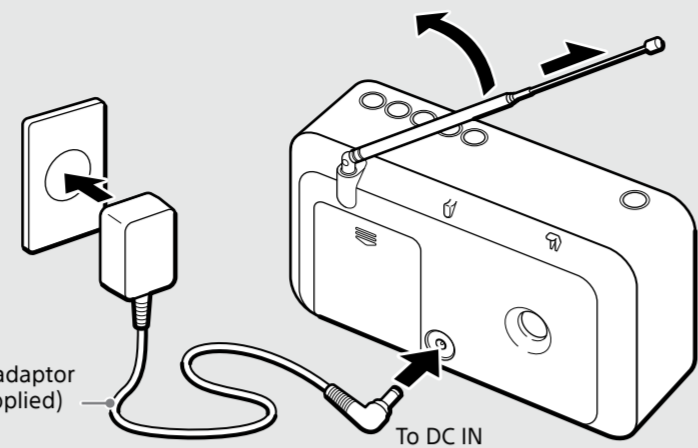
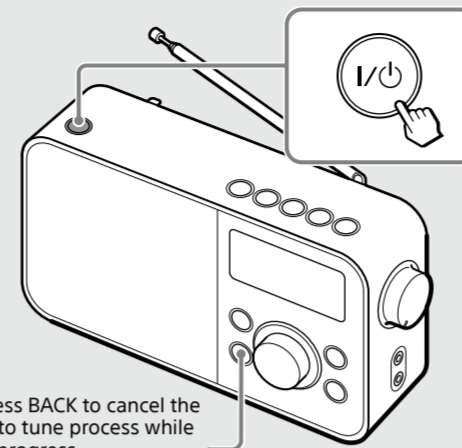


Getting Started

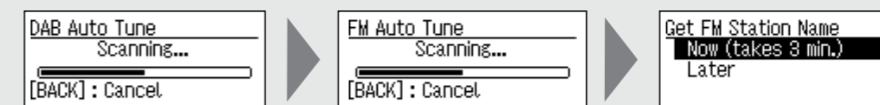
1 Connect the radio to the mains and extend the antenna.



2 Turn on the radio.



If it is the first time the radio is turned on, auto tune is performed automatically.



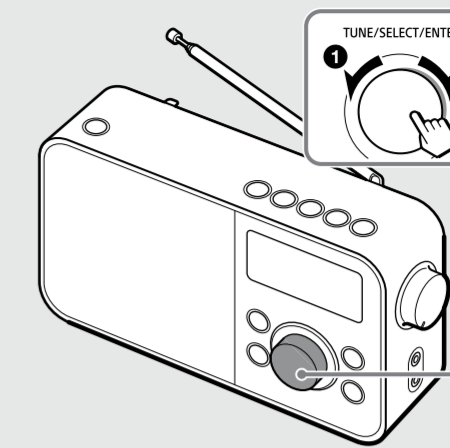
You can choose whether to receive FM station names now or later.

Tips

- To perform auto tune again later, see "To make a new station list" below.
- You may choose to receive FM station names later, since the process may take a long time depending on the number of stations. See "Setup Menu Options" for details on how to receive FM station names.

[MENU] → Edit FM Station List → Get FM Station Name

3 Select "Now" or "Later" to complete the auto tune.



After auto tune is completed, the radio receives the first station in the DAB station list stored by auto tune.



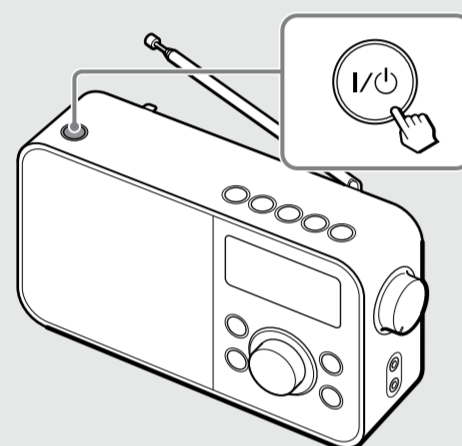
©2013 Sony Corporation Printed in China



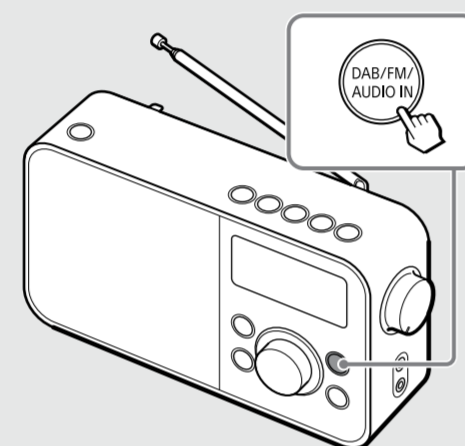
XDR-S60DBP

Listening to the Radio

1 Turn on the radio.

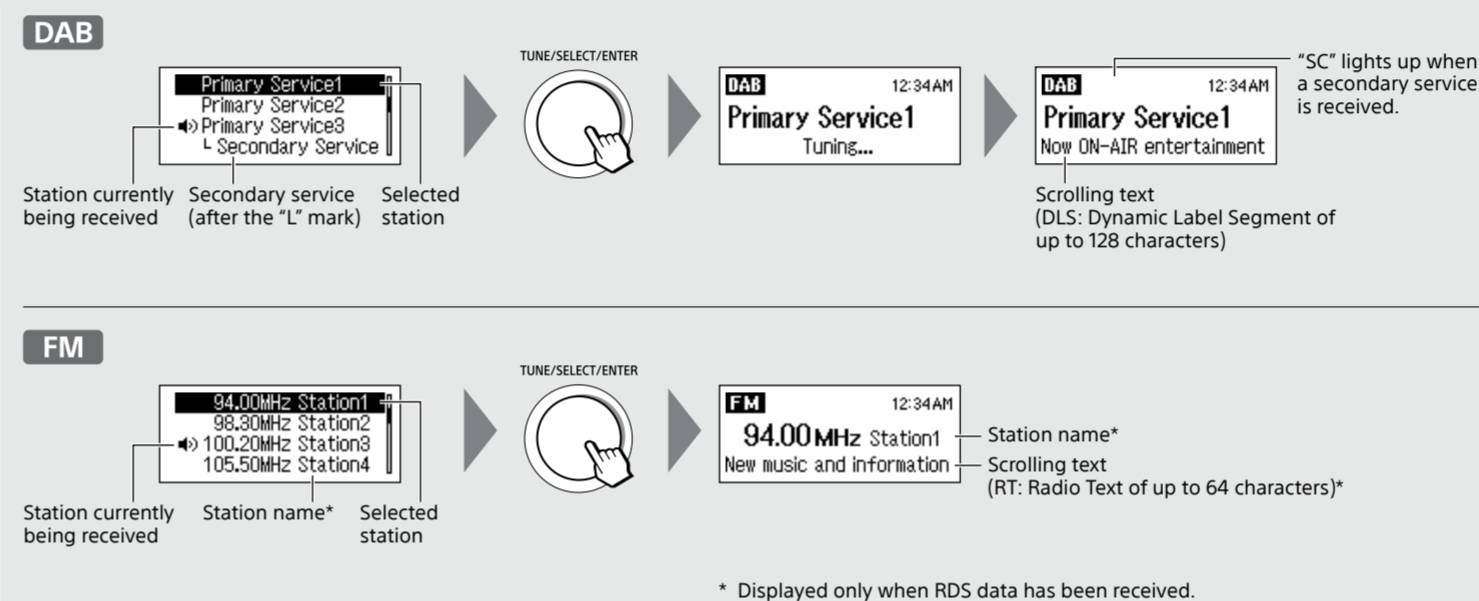
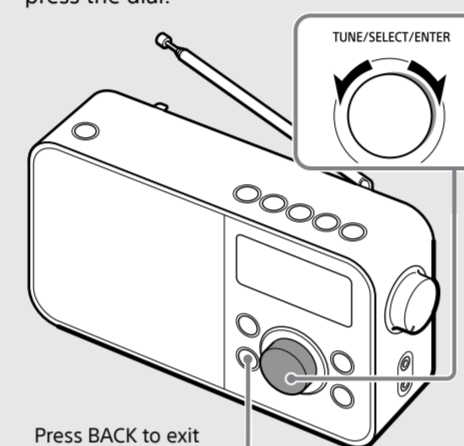


2 Select the band (DAB or FM).



3 Select a desired station or service.

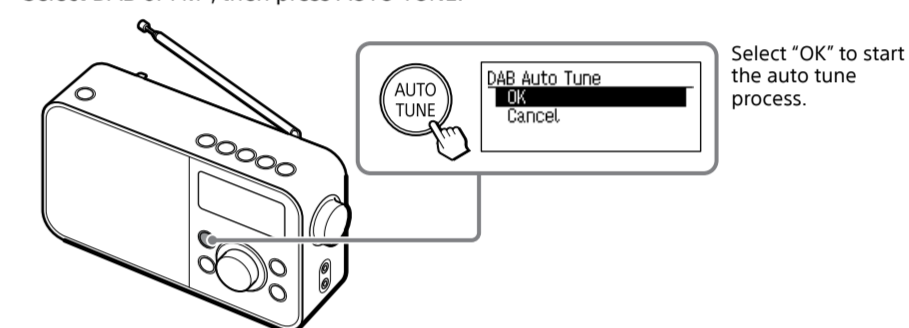
Turn the control dial to make a selection, then press the dial.



See "Setup Menu Options" for manual tuning.

To make a new station list

If you have moved to another region, or when the radio is reset, perform the auto tune again. Select DAB or FM*, then press AUTO TUNE.



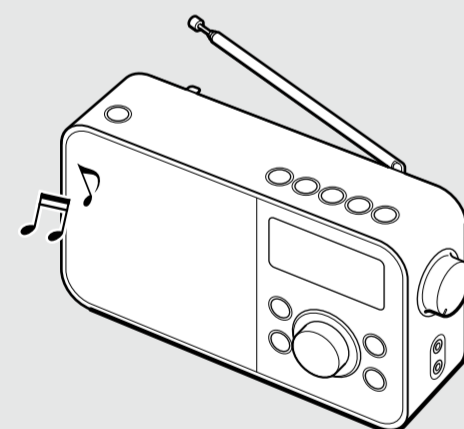
* Only when the tuning mode is set to "By Station List." When AUTO TUNE is pressed in "Manual Tune" mode, scan tuning will start instead. See "FM Tune Mode" in "Setup Menu Options" for details.

Presetting stations

Preset favourite stations to the 5 preset buttons. You can preset both a DAB and FM station for each of the 5 buttons.

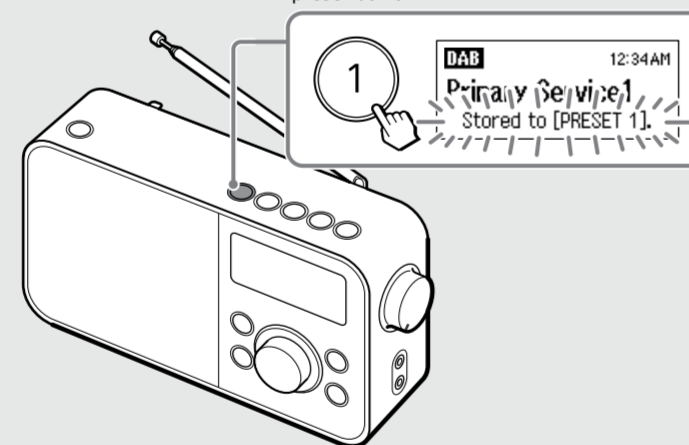
1 Tune to the station you want.

Follow steps 1 to 3 in "Listening to the Radio" above.



2 Press and hold the desired preset button (1 – 5) until "Stored to [PRESET x]." appears on the display.

Example: Presetting a DAB station to the preset button "1"



3 Repeat steps 1 and 2 to preset another station.

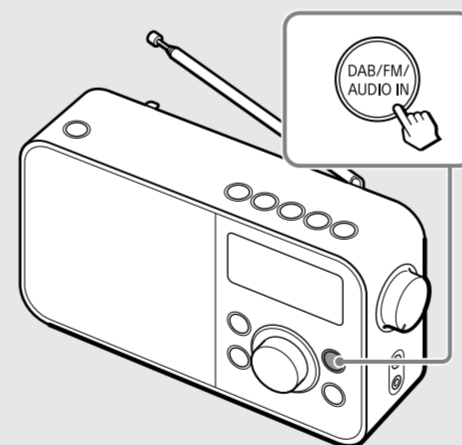
Changing a preset station

- Tune to a new station.
- Press and hold the preset button you want to change until "Stored to [PRESET x]." appears on the display. The preset station on the selected button will be replaced by the new one.

Tip
The preset stations remain in the radio's memory even after an auto tune is performed.

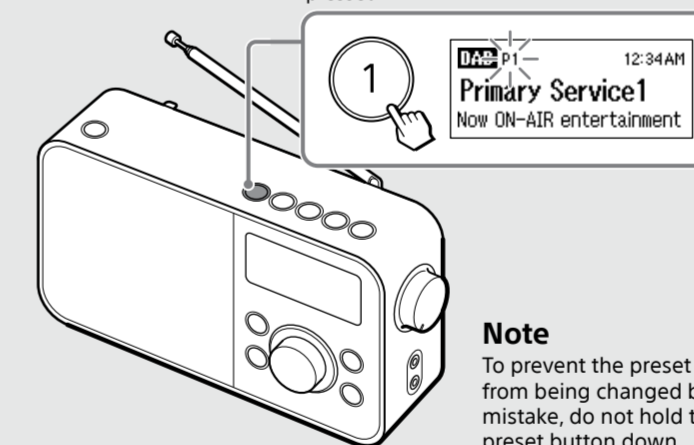
Listening to a preset station

1 Select the band (DAB or FM).



2 Press the desired preset button (1 – 5).

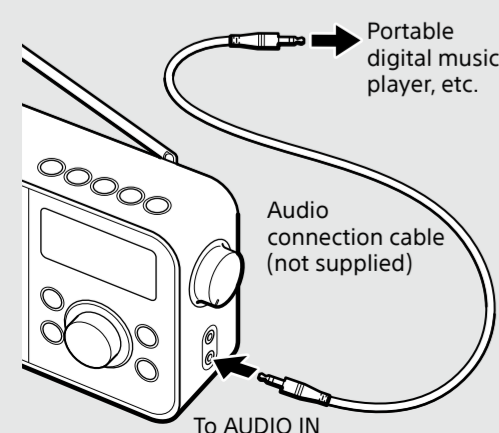
Example: When the preset button "1" is pressed



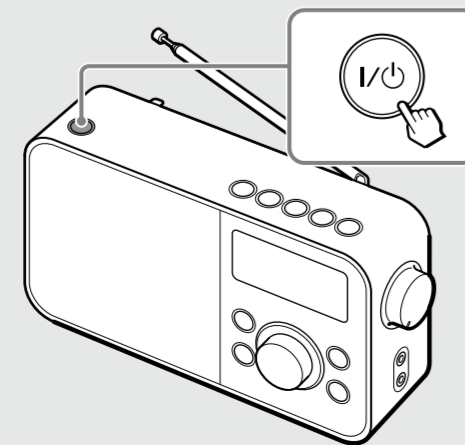
Note
To prevent the preset from being changed by mistake, do not hold the preset button down.

Listening to the Audio from an External Device

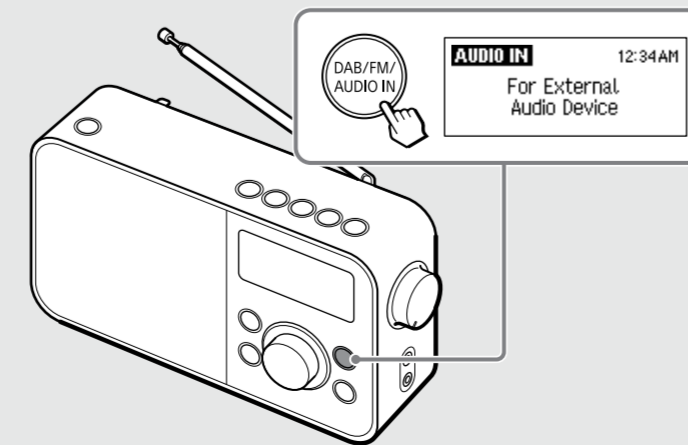
1 Connect the external device to the radio.



2 Turn on the radio.



3 Select AUDIO IN.

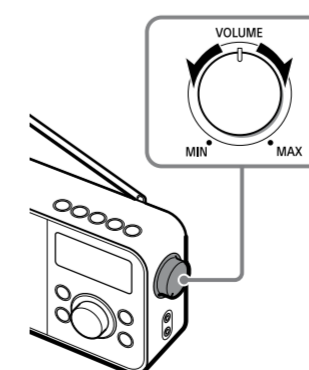


4 Start playing your selection on the connected device.

Notes

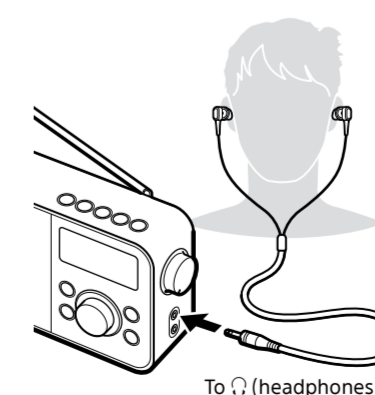
- When AUDIO IN is selected, the radio turns off automatically after about 20 minutes if there is no audio signal input.
- When the sound source from the AUDIO IN jack is originally stereo, the left and right stereo channels are mixed and the speaker output will be in monaural.

To adjust the volume



To listen through headphones

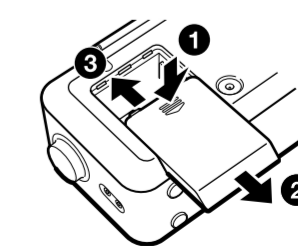
Connect headphones that have a stereo or monaural* mini plug (not supplied).



* When listening to stereo sound using monaural headphones, you will hear sound from the left channel only.

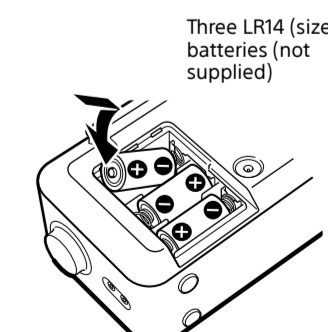
To use the radio on batteries

Press down on the battery compartment cover at 1 and slide it in the direction of the arrow 2.



To close the cover, slide it in the direction of the arrow 3 until it clicks into place.

Insert the (1) side of the battery first.



Tip
"BATT" appears on the display when the radio is powered by the batteries.

