



HP Managed LaserJet and PageWide portfolio

Paper-handling accessories



LaserJet with Booklet finisher,
Dual cassette feeder



LaserJet with Inner finisher,
High-capacity input tray,
High-capacity side input tray



PageWide with 3x550-sheet
paper tray and stand,
3,250-sheet external finisher

Input accessories - HP A3 LaserJet

Workgroup

The following accessories are compatible with the HP LaserJet Managed MFP E72425, MFP E72430, MFP E72525, MFP E72530, MFP E72535, and HP Color LaserJet Managed MFP E77422, MFP E77428, MFP E77822, MFP E77825, and MFP E77830.



Cabinet (Y1G17A)



Dual cassette feeder (Y1F97A)

Cabinet

Product number	Y1G17A
Dimensions (width x depth x height)	22.2 x 24 x 10.4 in (563 x 610 x 264 mm)
Weight	24.34 lb (11 kg)

Dual cassette feeder

Product number	Y1F97A
Input	
Capacity	Tray 1: up to 520 sheets Tray 2: up to 520 sheets
Media sizes	Letter, Legal, Executive, Statement, Oficio 8.5 x 13 in, 11 x 17 in; A3, A4, A5, RA4, SRA4, B4 (JIS), B5 (JIS), Oficio 216 x 340 mm, 8K, 16K
Custom media sizes	5.5 x 8.3 to 11.7 x 17 in (139.7 x 210 to 297 x 432 mm)
Media types	Bond, Colored, HP EcoFFICIENT, Letterhead, Plain, Preprinted, Prepunched, Recycled, Light 60-74g, HP Matte 90g, HP Matte 105g, HP Matte 120g, Mid-Weight 96-110g, Heavy 111-130g, HP Matte 150g, Extra Heavy 131-175g, HP Matte 200g, Cardstock 176-220g, Mid-Weight Glossy 96-110g, ¹ HP Soft Gloss 120g, HP Glossy 120g, ¹ Heavy Glossy 111-130g, ¹ HP Glossy 150g, ¹ Extra Heavy Glossy 131-175g ¹
Media weights	16 to 58 lb (60 to 220 g/m ²)
Dimensions (width x depth x height)	22.2 x 24 x 10.4 in (565 x 610 x 265 mm)
Weight	44.1 lb (20 kg)

Tray heater²

Product number	110V: Y1G22A #BGJ 220V: Y1G22A #B19
Dimensions (width x depth x height)	16.2 x 4.1 x 0.4 in (411.5 x 104 x 10 mm)
Weight	0.62 lb (0.3 kg)

The following accessory is compatible with the HP LaserJet Managed MFP E72525, MFP E72530, MFP E72535, and HP Color LaserJet Managed MFP E77822, MFP E77825, and MFP E77830.



High-capacity input tray (Y1F99A)

High-capacity input tray

Product number	Y1F99A
Input	
Capacity	Up to 2,000 sheets
Media sizes	Letter; A4
Media types	Bond, Colored, HP EcoFFICIENT, Letterhead, Plain, Preprinted, Prepunched, Recycled, Light 60-74g, HP Matte 90g, HP Matte 105g, HP Matte 120g, Mid-Weight 96-110g, Heavy 111-130g, HP Matte 150g, Extra Heavy 131-175g, HP Matte 200g, Cardstock 176-220g, Mid-Weight Glossy 96-110g, ¹ HP Soft Gloss 120g, ¹ HP Glossy 120g, ¹ Heavy Glossy 111-130g, ¹ HP Glossy 150g, ¹ Extra Heavy Glossy 131-175g ¹
Media weights	16 to 58 lb (60 to 220 g/m ²)
Dimensions (width x depth x height)	22.2 x 24 x 10.4 in (563 x 610 x 264 mm)
Weight	62.48 lb (28.3 kg)

The following accessories are compatible with the HP Color LaserJet Managed E75245.



1x550-sheet paper tray (T3V27A)



Stand (T3V28A)



2x550-sheet input tray and stand (T3V29A)



High-capacity input tray and stand (T3V30A)

1x550-sheet paper tray

Product number	T3V27A
Input	
Capacity	Up to 550 sheets
Custom media sizes	5.8 x 5.8 to 12.6 x 18 in (148 x 148 to 320 x 457.2 mm)
Media types	Cut sheet paper, Labels, Glossy paper, Glossy film, and Transparency
Media weights	16 to 68 lb (60 to 256 g/m ²)
Dimensions (width x depth x height)	21.89 x 22.99 x 5.08 in (556 x 584 x 129 mm)
Weight	22.5 lb (10.2 kg)

Stand

Product number	T3V28A
Dimensions (width x depth x height)	38.82 x 25.94 x 12.83 in (986 x 659 x 326 mm)
Weight	53.4 lb (24.2 kg)

2x550-sheet input tray and stand

Product number	T3V29A
Input	
Capacity	Up to 1,100 sheets
Custom media sizes	5.8 x 5.8 to 12.6 x 18 in (148 x 148 to 320 x 457.2 mm)
Media types	Cut sheet paper, Labels, Glossy paper, Glossy film, and Transparency
Media weights	16 to 68 lb (60 to 256 g/m ²)
Dimensions (width x depth x height)	38.82 x 25.94 x 12.83 in (986 x 659 x 326 mm)
Weight	62 lb (28.1 kg)

High-capacity input tray and stand

Product number	T3V30A
Input	
Capacity	Up to 2,700 sheets
Media sizes	Letter; A4
Custom media sizes	Not supported
Media types	Cut sheet paper, Labels, Glossy paper, Glossy film, and Transparency
Media weights	16 to 68 lb (60 to 256 g/m ²)
Dimensions (width x depth x height)	38.82 x 25.94 x 12.83 in (986 x 659 x 326 mm)
Weight	73.7 lb (33.4 kg)

The following accessories are compatible with the HP LaserJet Managed MFP M725 series.



1x500-sheet feeder and tray assembly (CF239A)



1x500-sheet feeder, cabinet, and stand (CF243A)



3x500-sheet feeder and stand (CF242A)



3,500-sheet high-capacity input tray and stand (CF245A)

1x500-sheet feeder and tray assembly

Product number	CF239A
Input	
Capacity	Up to 500 sheets
Custom media sizes	5.8 x 8.3 to 11.7 x 17 in (148 x 210 to 297 x 432 mm)
Media types	Paper (color, letterhead, light, plain, preprinted, prepunched, recycled, rough, tough paper), Bond, Cardstock, Envelope, Labels, Transparency, Vellum
Media weights	16 to 32 lb (60 to 120 g/m ²)
Dimensions (width x depth x height)	21.4 x 23.1 x 4 in (543 x 586 x 128 mm)
Weight	25 lb (11.4 kg)

1x500-sheet feeder, cabinet, and stand

Product number	CF243A
Input	
Capacity	Up to 500 sheets
Custom media sizes	5.8 x 8.3 to 11.7 x 17 in (148 x 210 to 297 x 432 mm)
Media types	Paper (color, letterhead, light, plain, preprinted, prepunched, recycled, rough, tough paper), Bond, Cardstock, Envelope, Labels, Transparency, Vellum
Media weights	16 to 32 lb (60 to 120 g/m ²)
Dimensions (width x depth x height)	21.4 x 23.1 x 16.3 in (543 x 586 x 415 mm)
Weight	43 lb (19.5 kg)

3x500-sheet feeder and stand

Product number	CF242A
Input	
Capacity	Up to 1,500 sheets
Media sizes	Letter, Legal, 11 x 17 in; A4, A3
Custom media sizes	5.5 x 8.3 to 11.7 x 17 in (139.7 x 210 to 297 x 432 mm)
Media types	Paper (color, letterhead, light, plain, preprinted, prepunched, recycled, rough, tough paper), Bond
Media weights	16 to 32 lb (60 to 120 g/m ²)
Dimensions (width x depth x height)	21.4 x 23.1 x 16.3 in (543 x 586 x 415 mm)
Weight	65 lb (29.8 kg)

High-capacity input tray and stand

Product number	CF245A
Input	
Capacity	Up to 3,500 sheets
Media sizes	Letter, Legal, 11 x 17 in; A4, A3
Custom media sizes	5.5 x 8.3 to 11.7 x 17 in (139.7 x 210 to 297 x 432 mm)
Media types	Paper (color, letterhead, light, plain, preprinted, prepunched, recycled, rough, tough paper), Bond
Media weights	16 to 32 lb (60 to 120 g/m ²)
Dimensions (width x depth x height)	29.5 x 25.8 x 16.5 in (750 x 655 x 420 mm)
Weight	84.5 lb (38.4 kg)

The following accessories are compatible with the HP Color LaserJet Managed MFP M775 series.



1x500-sheet feeder and tray assembly (CE860A)



1x500-sheet feeder, cabinet, and stand (CE792A)



3x500-sheet feeder and stand (CE725A)



3,500-sheet high-capacity input tray and stand (CF305A)

1x500-sheet feeder and tray assembly

Product number	CE860A
Input	
Capacity	Up to 500 sheets
Media sizes	Letter, letter-R, executive, legal, 8.5 x 13 in, 11 x 17 in; A3, A4, A5, Oficio 216 x 340 mm
Custom media sizes	5.8 x 8.5 to 11.7 x 17 in (148 x 210 to 297 x 432 mm)
Media types	Paper (plain, light, bond, recycled, mid-weight, heavy, extra heavy, mid-weight glossy, heavy glossy, extra heavy glossy, cardstock, card glossy), HP Matte, HP Soft Gloss, HP Glossy, Color Transparency, Labels, Letterhead, Envelope, Preprinted, Prepunched, Colored, Rough, HP Tough Paper, Opaque Film, User-defined
Media weights	16 to 32 lb (60 to 120 g/m ²)
Dimensions (width x depth x height)	21.4 x 22.1 x 5.1 in (546 x 562 x 132 mm)
Weight	25.1 lb (11.4 kg)

1x500-sheet feeder, cabinet, and stand

Product number	CE792A
Input	
Capacity	Up to 500 sheets
Media sizes	Letter, letter-R, executive, legal, 8.5 x 13 in, 11 x 17 in; A3, A4, A5, Oficio 216 x 340 mm
Custom media sizes	5.8 x 8.5 to 11.7 x 17 in (148 x 210 to 297 x 432 mm)
Media types	Paper (plain, light, bond, recycled, mid-weight, heavy, extra heavy, mid-weight glossy, heavy glossy, extra heavy glossy, cardstock, card glossy), HP Matte, HP Soft Gloss, HP Glossy, Color Transparency, Labels, Letterhead, Envelope, Preprinted, Prepunched, Colored, Rough, HP Tough Paper, Opaque Film, User-defined
Media weights	16 to 32 lb (60 to 120 g/m ²)
Dimensions (width x depth x height)	29.3 x 26.3 x 17.3 in (745 x 668 x 439 mm)
Weight	43 lb (19.5 kg)

3x500-sheet feeder and stand

Product number	CE725A
Input	
Capacity	Up to 1,500 sheets
Media sizes	Letter, letter-R, executive, legal, 8.5 x 13 in, 11 x 17 in; A3, A4, A5, Oficio 216 x 340 mm
Custom media sizes	5.8 x 8.5 to 11.7 x 17 in (148 x 210 to 297 x 432 mm)
Media types	Paper (plain, light, bond, recycled, mid-weight, heavy, extra heavy, mid-weight glossy, heavy glossy, extra heavy glossy, cardstock, card glossy), HP Matte, HP Soft Gloss, HP Glossy, Color Transparency, Labels, Letterhead, Envelope, Preprinted, Prepunched, Colored, Rough, HP Tough Paper, Opaque Film, User-defined
Media weights	16 to 32 lb (60 to 120 g/m ²)
Dimensions (width x depth x height)	38.2 x 36.2 x 22.7 in (971 x 920 x 578 mm)
Weight	67.3 lb (30.6 kg)

High-capacity input tray and stand

Product number	CF305A
Input	
Capacity	Up to 3,500 sheets
Custom media sizes	Letter; A4
Media types	Paper (plain, light, bond, recycled, mid-weight, heavy, extra heavy, mid-weight glossy, heavy glossy, extra heavy glossy, cardstock, card glossy), HP Matte, HP Soft Gloss, HP Glossy, Color Transparency, Labels, Letterhead, Envelope, Preprinted, Prepunched, Colored, Rough, HP Tough Paper, Opaque Film, User-defined
Media weights	16 to 32 lb (60 to 120 g/m ²)
Dimensions (width x depth x height)	29.3 x 26.3 x 17.3 in (745 x 668 x 439 mm)
Weight	84.5 lb (38.4 kg)

Department

The following accessories are compatible with the HP LaserJet Managed MFP E82540, MFP E82550, MFP E82560, and HP Color LaserJet Managed MFP E87640, MFP E87650, and MFP E87660.



Cabinet (Y1G16A)



Dual cassette feeder (Y1F98A)



High-capacity input tray (Y1G21A)



High-capacity side input tray (Y1G20A)

Cabinet

Product number	Y1G16A
Dimensions (width x depth x height)	23.1 x 26.4 x 10.2 in (587 x 670 x 260 mm)
Weight	26.32 lb (11.9 kg)

Dual cassette feeder

Product number	Y1F98A
Input	
Capacity	Tray 1: up to 520 sheets Tray 2: up to 520 sheets
Media sizes	Letter, Legal, Executive, Statement, Oficio 8.5 x 13 in, 11 x 17 in, 12 x 18 in; A3, A4, A5, RA3, SRA3, RA4, SRA4, B4 (JIS), B5 (JIS), Oficio 216 x 340 mm, 8K, 16K
Custom media sizes	5.5 x 7.2 to 12 x 18 in (139.7 x 182 to 305 x 457 mm)
Media types	Bond, Colored, HP EcoFFICIENT, Letterhead, Plain, Preprinted, Prepunched, Recycled, Light 60-74g, HP Matte 90g, HP Matte 105g, Mid-Weight 96-110g, HP Matte 120g, Heavy 111-130g, HP Matte 150g, Extra Heavy 131-175g, HP Matte 200g, Cardstock 176-220g, Light Paperboard 221-255g, Paperboard 256-300g, Mid-Weight Glossy 96-110g, ¹ HP Glossy 120g, ¹ HP Soft Gloss 120g, ¹ Heavy Glossy 111-130g, ¹ HP Glossy 150g, ¹ Extra Heavy Glossy 131-175g, ¹ HP Glossy 200g, ¹ Card Glossy 176-220g ¹
Media weights	16 to 80 lb (60 to 300 g/m ²)
Dimensions (width x depth x height)	23.1 x 26.4 x 10.2 in (587 x 670 x 260 mm)
Weight	63.24 lb (28.7 kg)

Tray heater²

Product number	110V: Y1G22A #BGJ 220V: Y1G22A #B19
Dimensions (width x depth x height)	16.2 x 4.1 x 0.4 in (411.5 x 104 x 10 mm)
Weight	0.62 lb (0.3 kg)

High-capacity input tray

Product number	Y1G21A
Input	
Capacity	Up to 2,000 sheets
Media sizes	Letter; A4
Media types	Bond, Colored, HP EcoFFICIENT, Letterhead, Plain, Preprinted, Prepunched, Recycled, Light 60-74g, HP Matte 90g, HP Matte 105g, Mid-Weight 96-110g, HP Matte 120g, Heavy 111-130g, HP Matte 150g, Extra Heavy 131-175g, HP Matte 200g, Cardstock 176-220g, Light Paperboard 221-255g, Paperboard 256-300g, Mid-Weight Glossy 96-110g, ¹ HP Glossy 120g, ¹ HP Soft Gloss 120g, ¹ Heavy Glossy 111-130g, ¹ HP Glossy 150g, ¹ Extra Heavy Glossy 131-175g, ¹ HP Glossy 200g, ¹ Card Glossy 176-220g ¹
Media weights	16 to 80 lb (60 to 300 g/m ²)
Dimensions (width x depth x height)	23.1 x 26.4 x 10.2 in (587 x 670 x 260 mm)
Weight	62.48 lb (28.3 kg)

High-capacity side input tray

Product number	Y1G20A
Input	
Capacity	Up to 3,000 sheets
Media sizes	Letter; A4
Media types	Bond, Colored, HP EcoFFICIENT, Letterhead, Plain, Preprinted, Prepunched, Recycled, Light 60-74g, HP Matte 90g, HP Matte 105g, Mid-Weight 96-110g, HP Matte 120g, Heavy 111-130g, HP Matte 150g, Extra Heavy 131-175g, HP Matte 200g, Cardstock 176-220g, Light Paperboard 221-255g, Paperboard 256-300g, Mid-Weight Glossy 96-110g, ¹ HP Glossy 120g, ¹ HP Soft Gloss 120g, ¹ Heavy Glossy 111-130g, ¹ HP Glossy 150g, ¹ Extra Heavy Glossy 131-175g, ¹ HP Glossy 200g, ¹ Card Glossy 176-220g ¹
Media weights	16 to 80 lb (60 to 300 g/m ²)
Dimensions (width x depth x height)	14.4 x 21 x 16.1 in (366 x 533 x 409 mm)
Weight	44.22 lb (20.1 kg)

The following accessories are compatible with the HP LaserJet Managed Flow MFP M830zm.



1,500-sheet High-capacity input tray (T0F54A)



3,500-sheet High-capacity input tray and stand (C3F79A)

1,500-sheet High-capacity input tray

Product number	T0F54A
Input	
Capacity	Up to 1,500 sheets
Custom media sizes	11 x 17 in; A3
Media types	Plain paper, cut sheet
Media weights	16 to 53 lb (60 to 199 g/m ²)
Dimensions (width x depth x height)	25 x 28.1 x 15.7 in (634 x 715 x 399 mm)
Weight	69 lb (31.4 kg)

High-capacity input tray and stand

Product number	C3F79A
Input	
Capacity	Up to 3,500 sheets
Media sizes	Letter; A4
Custom media sizes	8.5 x 11 in (216 to 279 mm)
Media types	Paper (bond, color, letterhead, plain, preprinted, prepunched, recycled, rough), Cardstock, Labels, Transparencies
Media weights	16 to 53 lb bond (60 to 199 g/m ²)
Dimensions (width x depth x height)	25 x 28.1 x 15.7 in (634 x 715 x 399 mm)
Weight	71 lb (32.3 kg)

The following accessories are compatible with the HP Color LaserJet Managed Flow MFP M880 series.



3x500-sheet feeder and stand (C1N63A)

3x500-sheet feeder and stand

Product number	C1N63A
Input	
Capacity	Up to 1,500 sheets
Media sizes	Letter, legal, executive, 11 x 17 in, 8.5 x 13 in; A3, A4, A5, B4, B5
Custom media sizes	5.8 x 8.3 to 11.7 x 17 in (148 x 210 to 297 x 432 mm)
Media types	Paper (bond, color, letterhead, plain, preprinted, prepunched, recycled, rough), Cardstock, Labels, Transparencies
Media weights	16 to 53 lb (60 to 199 g/m ²)
Dimensions (width x depth x height)	27.8 x 27.6 x 15.3 in (705 x 700 x 389 mm)
Weight	78.7 lb (35.8 kg)

The following accessories are compatible with the HP Color LaserJet Managed E85055dn.



1x550-sheet paper tray (T3V27A)



Stand (T3V28A)



2x550-sheet input tray and stand (T3V29A)



High-capacity input tray and stand (T3V30A)

1x550-sheet paper tray

Product number	T3V27A
Input	
Capacity	Up to 550 sheets
Custom media sizes	5.8 x 5.8 to 12.6 x 18 in (148 x 148 to 320 x 457.2 mm)
Media types	Cut sheet paper, Labels, Glossy paper, Glossy film, and Transparency
Media weights	16 to 68 lb (60 to 256 g/m ²)
Dimensions (width x depth x height)	21.89 x 22.99 x 5.08 in (556 x 584 x 129 mm)
Weight	22.5 lb (10.2 kg)

Stand

Product number	T3V28A
Dimensions (width x depth x height)	38.82 x 25.94 x 12.83 in (986 x 659 x 326 mm)
Weight	53.4 lb (24.2 kg)

2x550-sheet input tray and stand

Product number	T3V29A
Input	
Capacity	Up to 1,100 sheets
Custom media sizes	5.8 x 5.8 to 12.6 x 18 in (148 x 148 to 320 x 457.2 mm)
Media types	Cut sheet paper, Labels, Glossy paper, Glossy film, and Transparency
Media weights	16 to 68 lb (60 to 256 g/m ²)
Dimensions (width x depth x height)	38.82 x 25.94 x 12.83 in (986 x 659 x 326 mm)
Weight	62 lb (28.1 kg)

High-capacity input tray and stand

Product number	T3V30A
Input	
Capacity	Up to 2,700 sheets
Media sizes	Letter; A4
Custom media sizes	Not supported
Media types	Cut sheet paper, Labels, Glossy paper, Glossy film, and Transparency
Media weights	16 to 68 lb (60 to 256 g/m ²)
Dimensions (width x depth x height)	38.82 x 25.94 x 12.83 in (986 x 659 x 326 mm)
Weight	73.7 lb (33.4 kg)

Input accessories - HP A4 LaserJet

Workgroup

The following accessories are compatible with the HP LaserJet Managed E50145 and the HP LaserJet Managed MFP E52645 series.



1x550-sheet paper tray (F2A72A)



Cabinet (F2A73A)

1x550-sheet paper tray

Product number	F2A72A
Input	
Capacity	Up to 550 sheets
Custom media sizes	7 x 10 to 8.5 x 14 in (177.8 x 254 to 216 x 356 mm)
Media types	Cut sheet paper
Media weights	16 to 32 lb (60 to 120 g/m ²)
Dimensions (width x depth x height)	16.46 x 14.02 x 5.12 in (418 x 356 x 130 mm)
Weight	8.86 lb (4.02 kg)

Cabinet

Product number	F2A73A
Dimensions (width x depth x height)	24.9 x 23.6 x 15 in (633 x 599 x 381 mm)
Weight	40.8 lb (18.5 kg)

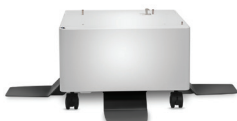
Staple cartridge refill for built-in convenience stapler (MFP E52645 only)

Product number	Q7432A
Cartridge capacity	2 cartridges, 1,500 staples each

The following accessories are compatible with the HP Color LaserJet Managed E55040 series and MFP E57540 series.



1x550-sheet paper feeder (B5L34A)



Stand and Cabinet (B5L51A)

1x550-sheet paper feeder

Product number	B5L34A
Input	
Capacity	Up to 550 sheets
Custom media sizes	4 x 6 to 8.5 x 14 in (102 x 148 to 216 x 356 mm)
Media types	Paper (banner, brochure, inkjet, plain), Photo paper (borderless, HP premium, panoramic, plus tab), Labels, Cards (greeting, index), Transparencies, Iron-on transfers
Media weights	16 to 32 lb (60 to 120 g/m ²)
Dimensions (width x depth x height)	18.03 x 18.31 x 5.12 in (458 x 465 x 130 mm)
Weight	12.79 lb (5.8 kg)

Stand and Cabinet

Product number	B5L51A
Dimensions (width x depth x height)	34.8 x 34.2 x 11.5 in (884.7 x 867.8 x 292.1 mm)
Weight	38 lb (17.2 kg)

The following accessories are compatible with the HP LaserJet Managed E60155, E60165, and E60175.



550-sheet paper feeder (LOH17A)



2,100-sheet paper feeder (LOH18A)



Printer stand (LOH19A)



Envelope feeder (LOH21A)

550-sheet paper feeder

Product number	LOH17A
Input	
Capacity	Up to 550 sheets
Custom media sizes	3.90 x 5.83 to 8.5 x 14 in (99 x 148 to 216 x 356 mm)
Media types	Paper (plain, light, bond, recycled, heavy, pre-printed, pre-punched, colored, rough), Mono Transparency, Labels, Letterhead
Media weights	16 to 32 lb (60 to 120 g/m ²)
Dimensions (width x depth x height)	16.7 x 18.3 x 5.8 in (426 x 466 x 148 mm)
Weight	12.6 lb (5.7 kg)

2,100-sheet paper feeder

Product number	LOH18A
Input	
Capacity	Up to 2,100 sheets
Media sizes	Letter, legal; A4
Media types	Paper (plain, light, bond, recycled, heavy, pre-printed, pre-punched, colored, rough), Mono Transparency, Labels, Letterhead
Media weights	16 to 32 lb (60 to 120 g/m ²)
Dimensions (width x depth x height)	16.7 x 18.3 x 13.4 in (426 x 466 x 341 mm)
Weight	22.2 lb (10.1 kg)

Printer stand

Product number	LOH19A
Dimensions (width x depth x height)	25.5 x 29.4 x 5.7 in (648 x 748 x 144 mm)
Weight	31.4 lb (14.2 kg)

Envelope feeder

Product number	LOH21A
Input	
Capacity	Up to 75 envelopes
Custom media sizes	3.5 x 6.3 to 7 x 10 in (90 x 148 to 178 x 254 mm)
Media types	Envelopes, Note cards
Media weights	20 to 32 lb (75 to 120 g/m ²)
Dimensions (width x depth x height)	16.7 x 18.3 x 5.8 in (426 x 466 x 148 mm)
Weight	12.8 lb (5.8 kg)

LaserJet Extension Tray Cover

Product number	L0H22A
Dimensions (width x depth x height)	3.6 x 16.7 x 3.6 in (91.5 x 425 x 92 mm)
Weight	.47 lb (0.214 kg)

The following accessories are compatible with the HP LaserJet Managed MFP E62655, MFP E62665, and MFP E62675.



550-sheet paper feeder (J8J89A)



1x550-sheet paper feeder with stand and cabinet (J8J91A)



3x550-sheet paper feeder with stand (J8J93A)



1x550-sheet paper feeder and 2,000-sheet HCI feeder with stand (J8J92A)

550-sheet paper feeder

Product number	J8J89A
Input	
Capacity	Up to 550 sheets
Custom media sizes	3.90 x 5.83 to 8.5 x 14 in (99 x 148 to 216 x 356 mm)
Media types	Paper (plain, light, bond, recycled, heavy, pre-printed, pre-punched, colored, rough), Mono Transparency, Labels, Letterhead
Media weights	16 to 32 lb (60 to 120 g/m ²)
Dimensions (width x depth x height)	20.15 x 22 x 5.8 in (512 x 558 x 148 mm)
Weight	15 lb (6.8 kg)

1x550-sheet paper feeder with stand and cabinet

Product number	J8J91A
Input	
Capacity	Up to 550 sheets
Custom media sizes	3.90 x 5.83 to 8.5 x 14 in (99 x 148 to 216 x 356 mm)
Media types	Paper (plain, light, bond, recycled, heavy, pre-printed, pre-punched, colored, rough), Mono Transparency, Labels, Letterhead
Media weights	16 to 32 lb (60 to 120 g/m ²)
Dimensions (width x depth x height)	26 x 25.9 x 18.8 in (660 x 658 x 478 mm)
Weight	41 lb (18.6 kg)

3x550-sheet paper feeder with stand

Product number	J8J93A
Input	
Capacity	Up to 1,650 sheets
Custom media sizes	3.90 x 5.83 to 8.5 x 14 in (99 x 148 to 216 x 356 mm)
Media types	Paper (plain, light, bond, recycled, heavy, pre-printed, pre-punched, colored, rough), Mono Transparency, Labels, Letterhead
Media weights	16 to 32 lb (60 to 120 g/m ²)
Dimensions (width x depth x height)	26 x 26.2 x 18.8 in (661 x 667 x 479 mm)
Weight	50 lb (22.7 kg)

1x550-sheet paper feeder and 2,000-sheet HCl feeder with stand

Product number	J8J92A
Input	
Capacity	1x550-sheet tray: up to 550 sheets 2,000-sheet HCl tray: up to 2,000 sheets
Custom media sizes	1x550-sheet tray: 3.90 x 5.83 to 8.5 x 14 in (99 x 148 to 216 x 356 mm) 2,000-sheet HCl tray: 8.27 x 11 to 8.5 x 14 in (210 x 279 to 216 x 356 mm)
Media types	Paper (plain, light, bond, recycled, heavy, pre-printed, pre-punched, colored, rough), Mono Transparency, Labels, Letterhead
Media weights	16 to 32 lb (60 to 120 g/m ²)
Dimensions (width x depth x height)	26 x 25.9 x 18.8 in (660 x 658 x 478 mm)
Weight	55.6 lb (25.2 kg)

Envelope feeder

Product number	J8J90A
Input	
Capacity	Up to 75 envelopes
Custom media sizes	3.5 x 6.3 to 7 x 10 in (90 x 148 to 178 x 254 mm)
Media types	Envelopes, Note cards
Media weights	20 to 32 lb (75 to 120 g/m ²)
Dimensions (width x depth x height)	20.15 x 22 x 5.8 in (512 x 558 x 148 mm)
Weight	15 lb (6.8 kg)

The following accessories are compatible with the HP Color LaserJet Managed E65150, E65160, MFP E67650, and MFP E67660.



550-sheet paper feeder (P1B09A)



1x550-sheet paper feeder with stand and cabinet (P1B10A)



3x550-sheet paper feeder and stand (P1B11A)



1x550-sheet/2,000-sheet HCl feeder and stand (P1B12A)

550-sheet paper feeder

Product number	P1B09A
Input	
Capacity	Up to 550 sheets
Custom media sizes	3.97 x 5.83 to 8.5 x 14 in (101 x 148 to 216 x 356 mm)
Media types	Paper (plain, glossy paper, labels)
Media weights	16 to 58 lb (60 to 220 g/m ²)
Dimensions (width x depth x height)	20.08 x 18.03 x 5.12 in (510 x 458 x 130 mm)
Weight	13.8 lb (6.3 kg)

1x550-sheet paper feeder with stand and cabinet

Product number	P1B10A
Input	
Capacity	Up to 550 sheets
Custom media sizes	3.97 x 5.83 to 8.5 x 14 in (101 x 148 to 216 x 356 mm)
Media types	Paper (plain, glossy paper, labels)
Media weights	16 to 58 lb (60 to 220 g/m ²)
Dimensions (width x depth x height)	25.87 x 25.87 x 17.72 in (657 x 657 x 450 mm)
Weight	42.1 lb (19.1 kg)

3x550-sheet paper feeder with stand

Product number	P1B11A
Input	
Capacity	Up to 1,650 sheets
Custom media sizes	3.97 x 5.83 to 8.5 x 14 in (101 x 148 to 216 x 356 mm)
Media types	Paper (plain, glossy paper, labels)
Media weights	16 to 58 lb (60 to 220 g/m ²)
Dimensions (width x depth x height)	25.87 x 25.87 x 17.72 in (657 x 657 x 450 mm)
Weight	52 lb (23.6 kg)

1x550-sheet paper feeder and 2,000-sheet HCl feeder with stand

Product number	P1B12A
Input	
Capacity	1x550-sheet tray: up to 550 sheets 2,000-sheet HCl tray: up to 2,000 sheets
Custom media sizes	1x550-sheet tray: 3.97 x 5.83 to 8.5 x 14 in (101 x 148 to 216 x 356 mm) 2,000-sheet HCl tray: 8.27 x 11.7 to 8.5 x 14 in (210 x 297 to 216 x 356 mm)
Media types	1x550-sheet tray: Paper (plain, glossy paper, labels) 2,000-sheet HCl tray: Plain paper
Media weights	16 to 58 lb (60 to 220 g/m ²)
Dimensions (width x depth x height)	25.87 x 25.87 x 17.72 in (657 x 657 x 450 mm)
Weight	53.6 lb (24.3 kg)

Finishing accessories - HP A3 LaserJet



Sort

Ideal for separating documents that don't require binding



Staple

Ideal for multipage documents or reports



Saddle staple

Ideal for stapled booklets; a cover sheet can be added



Punch

Ideal for papers to be filed in binders



Fold

Ideal for cards (V-fold) and tri-fold brochures (C-fold)

Workgroup and Department

The following accessories are compatible with the HP LaserJet Managed MFP E72425, MFP E72430, MFP E72525, MFP E72530, MFP E72535, MFP E82540, MFP E82550, MFP E82560; HP Color LaserJet Managed MFP E77422, MFP E77428, MFP E77822, MFP E77825, MFP E77830, MFP E87640, MFP E87650, and MFP E87660.



Inner finisher (Y1G00A)³

Inner finisher³

Product number	Y1G00A
Type	Top tray: Sort, Stack Main tray: Sort (offset available), Stack (offset available), Staple
Stack	
Capacity	Top tray: up to 50 sheets Main (finishing) tray: up to 500 sheets
Media sizes	Top tray: Letter, Legal, Executive, Statement, Oficio 8.5 x 13 in, 4 x 6 in, 5 x 7 in, 5 x 8 in, 11 x 17 in, envelopes (#9, #10, Monarch); A3, A4, A5, A6, B5 (JIS), Oficio 216 x 340 mm, B4 (JIS), B6 (JIS), RA4, SRA4, 10 x 15 cm, 8K 270 x 390 mm, 16K 195 x 270 mm, 8K 260 x 368 mm, 16K 184 x 260 mm, 8K 273 x 394 mm, 16K 197 x 273 mm, postcards (JIS single and double), envelopes (B5, C5, C6, DL) Main tray: Letter, Legal, Executive, 11 x 17 in, 12 x 18 in, Oficio 8.5 x 13 in; A4, A3, A5, B4 (JIS), B5 (JIS), SRA3, 8K 270 x 390 mm, 16K 195 x 270 mm
Custom media sizes	Top tray: 3.8 x 5.8 to 11.7 x 17 in (98 x 148 to 297 x 432 mm) Main tray: 3.8 x 5.5 to 12 x 18 in (98 x 140 to 305 x 457 mm)
Media types	Top tray: Bond, Colored, Envelope HP EcoFFICIENT, Letterhead, Plain, Preprinted, Prepunched, Recycled, User Type 1-10, HP EcoFFICIENT, Light 60-74g, HP Matte 90g, HP Matte 105g, Mid-Weight 96-110g, Heavy 111-130g, HP Matte 120g, Extra Heavy 131-175g, HP Matte 150g, Cardstock 176-220g, HP Matte 200g, Light Paperboard 221-255g, Paperboard 256-300g, Heavy Paperboard, Mid-Weight Glossy 96-110g, ¹ HP Glossy 120g, ¹ HP Soft Gloss 120g, ¹ Heavy Glossy 111-130g, ¹ HP Glossy 150g, ¹ Extra Heavy Glossy 131-175g ¹ Main tray: Bond, Color Transparency, Colored, Heavy Envelope, HP EcoFFICIENT, Labels, Letterhead, Preprinted, Prepunched, Recycled, User Type 1-10, Light 60-74g, HP Matte 90g, HP Matte 105g, Mid-Weight 96-110g, Heavy 111-130g, HP Matte 120g, Extra Heavy 131-175g, HP Matte 150g, Cardstock 176-220g, HP Matte 200g, Light Paperboard 221-255g, Mid-Weight Glossy 96-110g, ¹ HP Glossy 120g, ¹ HP Soft Gloss 120g, ¹ Heavy Glossy 111-130g, ¹ HP Glossy 150g, ¹ Extra Heavy Glossy 131-175g, ¹ Card Glossy 176-220g, ¹ HP Glossy 200g ¹
Media weights	Top tray: 14 to 86 lb (52 to 323 g/m ²); Main tray: 14 to 68 lb (52 to 256 g/m ²)
Staple	
Capacity	Up to 50 sheets; 24 lb (90 g/m ²) or less
Media sizes	Letter, Legal, Executive, Oficio 8.5 x 13 in, 11 x 17 in; A4, A3, A5, B4 (JIS), B5 (JIS), 8K 270 x 390 mm, 16K 195 x 270 mm
Media weights	16 to 68 lb (60 to 256 g/m ²)
Position	Corner (single 45° or single flat), center (dual)
Cartridge capacity	5,000 staples
Dimensions (width x depth x height)	26 x 19.3 x 9 in (660 x 490 x 229 mm)
Weight	33 lb (14.9 kg)

Inner finisher staples

Product number	Y1G13A
Cartridge capacity	5,000 staples

2/3 hole punch module for Inner finisher

Product number	Y1G02A
Punch	
Media sizes	Letter, Legal, Executive, 11 x 17 in, Oficio 8.5 x 13 in; A4, A3, A5, B4 (JIS), B5 (JIS), 8K 270 x 390 mm, 16K 195 x 270 mm
Media weights	16 to 68 lb (60 to 256 g/m ²)
Dimensions (width x depth x height)	16.8 x 7.1 x 5.4 in (426.7 x 180 x 137 mm)
Weight	4.4 lb (2.0 kg)

The following accessories are compatible with the HP LaserJet Managed MFP E72525, MFP E72530, MFP E72535, MFP E82540, MFP E82550, MFP E82560, and HP Color LaserJet Managed MFP E77822, MFP E77825, MFP E77830, MFP E87640, MFP E87650, and MFP E87660.



Booklet finisher (Y1G07A)⁴



Stapler/stacker finisher (Y1G18A)⁴

Booklet finisher⁴

Product number	Y1G07A
Type	Top tray: Sort, Stack, C-fold, V-fold Main tray: Sort (offset available), Stack (offset available), Staple, Saddle staple, Punch, C-fold, V-fold
Stack	
Capacity	Top tray: up to 250 sheets Main (finishing) tray: up to 2,000 sheets Booklet Tray: approximately 5 sets of 25 sheets each
Media sizes	Top tray: Letter, Legal, Executive, Statement, Oficio 8.5 x 13 in, 4 x 6 in, 5 x 7 in, 5 x 8 in, 11 x 17 in, 12 x 18 in, envelopes (#9, #10, Monarch); A3, A4, A5, A6, B4 (JIS), B5 (JIS), B6 (JIS), SRA3, RA4, SRA4, 10 x 15 cm, Oficio 216 x 340 mm, 8K 270 x 390 mm, 16K 195 x 270 mm, 8K 260 x 368 mm, 16K 184 x 260 mm, 8K 273 x 394 mm, 16K 197 x 273 mm, postcards (JIS single and double), envelopes (B5, C5, C6, DL) Main tray: Letter, Legal, Executive, Statement, Oficio 8.5 x 13 in, 11 x 17 in, 12 x 18 in; A4, A3, A5, B4 (JIS), B5 (JIS), SRA3, 8K 270 x 390 mm, 16K 195 x 270 mm Booklet tray: Letter, Legal, Executive, 11 x 17 in, 12 x 18 in, Oficio 8.5 x 13 in; A4, A3, B4 (JIS), B5 (JIS), 8K 270 x 390 mm, 16K 195 x 270 mm
Media types	Top tray: Bond, Color Transparency, Colored, Envelope, Heavy Envelope, HP EcoFFICIENT, Labels, Letterhead, Plain, Preprinted, Prepunched, Recycled, User Type 1-10, Light 60-74g, HP Matte 90g, HP Matte 105g, Mid-Weight 96-110g, Heavy 111-130g, HP Matte 120g, Extra Heavy 131-175g, HP Matte 150g, Cardstock 176-220g, HP Matte 200g, Light Paperboard 221-255g, Paperboard 256-300g, Mid-Weight Glossy 96-110g, ¹ HP Glossy 120g, ¹ HP Soft Gloss 120g, ¹ Heavy Glossy 111-130g, ¹ HP Glossy 150g, ¹ Extra Heavy Glossy 131-175g, ¹ Card Glossy 176-220g, ¹ HP Glossy 200g ¹ Main tray: Bond, Color Transparency, Colored, HP EcoFFICIENT, Letterhead, Plain, Preprinted, Prepunched, Recycled, User Type 1-10, Light 60-74g, HP Matte 90g, HP Matte 105g, Mid-Weight 96-110g, Heavy 111-130g, HP Matte 120g, Extra Heavy 131-175g, HP Matte 150g, Cardstock 176-220g, HP Matte 200g, Light Paperboard 221-255g, Paperboard 256-300g, Heavy Paperboard, Mid-Weight Glossy 96-110g, ¹ HP Glossy 120g, ¹ HP Soft Gloss 120g, ¹ Heavy Glossy 111-130g, ¹ HP Glossy 150g, ¹ Extra Heavy Glossy 131-175g, ¹ Card Glossy 176-220g, ¹ HP Glossy 200g ¹ Booklet tray: Bond, Colored, HP EcoFFICIENT, Letterhead, Plain, Preprinted, Prepunched, Recycled, User Type 1-10, Light 60-74g, HP Matte 90g, HP Matte 105g, Mid-Weight 96-110g, Heavy 111-130g, HP Matte 120g, Extra Heavy 131-175g, HP Matte 150g, Cardstock 176-220g, HP Matte 200g, Mid-Weight Glossy 96-110g, ¹ HP Glossy 120g, ¹ HP Soft Gloss 120g, ¹ Heavy Glossy 111-130g, ¹ HP Glossy 150g, ¹ Extra Heavy Glossy 131-175g, ¹ Card Glossy 176-220g, ¹ HP Glossy 200g ¹
Media weights	16 to 93 lb (60 to 350 g/m ²)

Booklet finisher,⁴ continued

Staple	
Capacity	Staple: up to 65 sheets; 24 lb (90 g/m ²) or less Fold and staple: up to 25 sheets; 24 lb (90 g/m ²) or less Fold and staple with cover: 1 cover page and 19 plain sheets; 24 lb (90 g/m ²) or less
Media sizes	Letter, Legal, Executive, Oficio 8.5 x 13 in, 11 x 17 in; A4, A3, A5, B4 (JIS), B5 (JIS), 8K 270 x 390 mm, 16K 195 x 270 mm
Media weights	14 to 68 lb (52 to 256 g/m ²)
Staple positions	Corner (single 45° or single flat), center (dual)
Cartridge capacity	5,000 staples
Punch	
Types	NA 2/3, EU 2/4
Media sizes	Letter, Legal, Executive, Statement, Oficio 8.5 x 13 in, 11 x 17 in; A4, A3, A5, B4 (JIS), B5 (JIS), 8K 270 x 390 mm, 16K 195 x 270 mm
Media weights	14 to 80 lb (52 to 300 g/m ²)
Booklet finisher	
Capacity	Booklet: up to 25 sheets; 21 lb (80 g/m ²) or less C-fold: up to 3 sheets; 14 to 24 lb (52 to 90 g/m ²) V-fold: up to 5 sheets; 21 lb (80 g/m ²) or less
Media sizes	Booklet: Letter, Legal, Executive, Oficio 8.5 x 13 in, 11 x 17 in, 12 x 18 in; A4, A3, B4 (JIS), B5 (JIS), 8K 270 x 390 mm, 16K 195 x 270 mm C-fold: Letter; A4 V-fold: Letter, Legal, Executive, Oficio 8.5 x 13 in, 11 x 17 in, 12 x 18 in; A4, A3, B4 (JIS), B5 (JIS), 8K 270 x 390 mm, 16K 195 x 270 mm
Media types	Booklet and V-Fold: Bond, Colored, HP EcoFFICIENT, Letterhead, Plain, Preprinted, Prepunched, Recycled, User Type 1-10, Light 60-74g, HP Matte 90g, HP Matte 105g, Mid-Weight 96-110g, Heavy 111-130g, HP Matte 120g, Extra Heavy 131-175g, HP Matte 150g, Cardstock 176-220g, HP Matte 200g, Mid-Weight Glossy 96-110g, ¹ HP Glossy 120g, ¹ HP Soft Gloss 120g, ¹ Heavy Glossy 111-130g, ¹ HP Glossy 150g, ¹ Extra Heavy Glossy 131-175g, ¹ Card Glossy 176-220g, ¹ HP Glossy 200g ¹ C-Fold: Colored, HP EcoFFICIENT, Letterhead, Plain, Preprinted, Prepunched, Recycled, User Type 1-10, Light 60-74g, HP Matte 90g
Media weights	16 to 32 lb (60 to 120 g/m ²); cover sheet: up to 80 lb (300 g/m ²)
Folding	C-fold inward top, C-fold inward bottom, C-fold outward top, C-fold outward bottom, V-fold inward top, V-fold outward top
Dimensions (width x depth x height)	23.8 x 23.3 x 40 in (605 x 592 x 1015 mm)
Weight	136.4 lb (62 kg)

2/3 hole punch module for Booklet finisher and Stapler/stacker finisher

Product number	Y1G10A
Punch	
Media sizes	Letter, Legal, Executive, Statement, Oficio 8.5 x 13 in, 11 x 17 in; A4, A3, A5, B4 (JIS), B5 (JIS), 8K 270 x 390 mm, 16K 195 x 270 mm
Media weights	14 to 80 lb (52 to 300 g/m ²)
Dimensions (width x depth x height)	3.14 x 19.09 x 9.25 in (80 x 485 x 235 mm)
Weight	6.3 lb (2.8 kg)

Booklet finisher staples

Product number	Y1G13A
Cartridge capacity	5,000 staples

Stapler/stacker finisher⁴

Product number	Y1G18A
Type	Top tray: Sort, Stack Main tray: Sort (offset available), Stack (offset available), Staple
Stack	
Capacity	Top tray: up to 250 sheets Main (finishing) tray: up to 3,000 sheets
Media sizes	Top tray: Letter, Legal, Executive, Statement, Oficio 8.5 x 13 in, 4 x 6 in, 5 x 7 in, 5 x 8 in, 11 x 17 in, 12 x 18 in, envelopes (#9, #10, Monarch); A3, A4, A5, A6, B4 (JIS), B5 (JIS), B6 (JIS), SRA3, RA4, SRA4, 10 x 15 cm, Oficio 216 x 340 mm, 8K 270 x 390 mm, 16K 195 x 270 mm, 8K 260 x 368 mm, 16K 184 x 260 mm, 8K 273 x 394 mm, 16K 197 x 273 mm, postcards (JIS single and double), envelopes (B5, C5, C6, DL) Main tray: Letter, Legal, Executive, Statement, Oficio 8.5 x 13 in, 11 x 17 in, 12 x 18 in; A4, A3, A5, B4 (JIS), B5 (JIS), SRA3, 8K 270 x 390 mm, 16K 195 x 270 mm
Custom media sizes	Top tray: 3.9 x 5.5 to 13 x 47.2 in (98 x 140 to 330 x 1200 mm)
Media types	Top tray: Bond, Color Transparency, Colored, Envelope, Heavy Envelope, HP EcoFFICIENT, Labels, Letterhead, Plain, Preprinted, Prepunched, Recycled, User Type 1-10, Light 60-74g, HP Matte 90g, HP Matte 105g, Mid-Weight 96-110g, Heavy 111-130g, HP Matte 120g, Extra Heavy 131-175g, HP Matte 150g, Cardstock 176-220g, HP Matte 200g, Light Paperboard 221-255g, Paperboard 256-300g, Mid-Weight Glossy 96-110g, ¹ HP Glossy 120g, ¹ HP Soft Gloss 120g, ¹ Heavy Glossy 111-130g, ¹ HP Glossy 150g, ¹ Extra Heavy Glossy 131-175g, ¹ Card Glossy 176-220g, ¹ HP Glossy 200g ¹ Main tray: Bond, Color Transparency, Colored, HP EcoFFICIENT, Letterhead, Plain, Preprinted, Prepunched, Recycled, User Type 1-10, Light 60-74g, HP Matte 90g, HP Matte 105g, Mid-Weight 96-110g, Heavy 111-130g, HP Matte 120g, Extra Heavy 131-175g, HP Matte 150g, Cardstock 176-220g, HP Matte 200g, Light Paperboard 221-255g, Paperboard 256-300g, Heavy Paperboard, Mid-Weight Glossy 96-110g, ¹ HP Glossy 120g, ¹ HP Soft Gloss 120g, ¹ Heavy Glossy 111-130g, ¹ HP Glossy 150g, ¹ Extra Heavy Glossy 131-175g, ¹ Card Glossy 176-220g, ¹ HP Glossy 200g ¹
Media weights	16 to 93 lb (60 to 350 g/m ²)
Staple	
Capacity	Up to 65 sheets: 24 lb (90 g/m ²) or less
Media sizes	Letter, Legal, Executive, Oficio 8.5 x 13 in, 11 x 17 in; A4, A3, A5, B4 (JIS), B5 (JIS), 8K 270 x 390 mm, 16K 195 x 270 mm
Media weights	16 to 68 lb (60 to 256 g/m ²)
Position	Corner (single 45° or single flat), center (dual)
Cartridge capacity	5,000 staples
Dimensions (width x depth x height)	25 x 23.3 x 40 in (635 x 592 x 1016 mm)
Weight	88 lb (39.9 kg)

Stapler/stacker finisher staples

Product number	Y1G14A
Cartridge capacity	5,000 staples

Workgroup

The following accessories are compatible with the HP LaserJet Managed MFP E72525, MFP E72530, MFP E72535, and HP Color LaserJet Managed MFP E77422, MFP E77428, MFP E77822, MFP E77825, and MFP E77830.

Job separator

Product number	Y1G15A
Sort	
Capacity	Up to 125 pages
Media sizes	Letter, Legal, Executive, Statement, Oficio 8.5 x 13 in, 11 x 17 in; A3, A4, A5, B5 (JIS), RA4, SRA4, Oficio 216 x 340 mm, B4 (JIS), 8K 270 x 390 mm, 16K 195 x 270 mm, 8K 260 x 368 mm, 16K 184 x 260 mm, 8K 273 x 394 mm, 16K 197 x 273 mm, DPostcard (JIS)
Media weights	16 to 68 lb (60 to 256 g/m ²)
Dimensions (width x depth x height)	15.6 x 15.2 x 4.2 in (396.2 x 386 x 106.7 mm)
Weight	1.4 lb (0.6 kg)

Second exit^{3,4}

Product number	Y1G23A
Dimensions (width x depth x height)	15.7 x 4 x 3.9 in (398.8 x 101.6 x 99 mm)
Weight	2 lb (0.9 kg)

The following accessory is compatible with the HP LaserJet Managed MFP E72525, MFP E72530, MFP E72535, and HP Color LaserJet Managed MFP E77822, MFP E77825, and MFP E77830.

Spacer⁴

Product number	Y1G24A
Dimensions (width x depth x height)	22.3 x 24 x 3 in (566.4 x 609.6 x 76.2 mm)
Weight	17 lb (7.7 kg)

Workgroup and Department

The following accessory is compatible with the HP LaserJet Managed MFP E72425, MFP E72430, MFP E82540, MFP E82550, MFP E82560, and HP Color LaserJet Managed MFP E87640, MFP E87650, and MFP E87660.

Job separator

Product number	Y1G01A
Sort	
Capacity	Up to 125 pages
Media sizes	Letter, Legal, Executive, Statement, Oficio 8.5 x 13 in, 11 x 17 in; A3, A4, A5, Oficio 216 x 340 mm, B4 (JIS), B5 (JIS), 8K 270 x 390 mm, 16K 195 x 270 mm
Media types	Bond, Color Transparency, Colored, Envelope, Heavy Envelope, Heavy Paperboard, HP EcoFFICIENT, Labels, Letterhead, Preprinted, Prepunched, Plain, Recycled, User Type 1-10, Light 60-74g, HP Matte 90g, HP Matte 105g, Mid-Weight 96-110g, HP Matte 120g, Heavy 111-130g, HP Matte 150g, Extra Heavy 131-175g, HP Matte 200g, Cardstock 176-220g, Light Paperboard 221-255g, Paperboard 256-300g, Mid-Weight Glossy 96-110g, ¹ HP Glossy 120g, ¹ HP Soft Gloss 120g, ¹ Heavy Glossy 111-130g, ¹ HP Glossy 150g, ¹ Extra Heavy Glossy 131-175g, ¹ HP Glossy 200g, ¹ Card Glossy 176-220g ¹
Media weights	16 to 68 lb (60 to 256 g/m ²)
Dimensions (width x depth x height)	15.6 x 15.2 x 4.2 in (396 x 386 x 106.7 mm)
Weight	1.4 lb (0.6 kg)

Department

The following accessories are compatible with the HP LaserJet Managed Flow MFP M830zm.



500-sheet Output catch tray (T0F27A)



Booklet finisher (CZ285A)



Stapler/stacker finisher (CZ994A)



Stapler/stacker finisher with 2/3 hole punch (CZ995A)

500-sheet Output catch tray

Product number	T0F27A
Output	
Capacity	Up to 500 sheets
Media sizes	Letter, legal, executive, 11 x 17 in, 8.5 x 13 in; A3, A4, A5, B4, B5
Custom media sizes	3.86 x 7.52 to 12.28 x 18.5 in (98 x 191 to 312 x 470 mm)
Media types	Paper (bond, color, letterhead, plain, preprinted, prepunched, recycled, rough), Cardstock, Labels, Transparencies
Media weights	16 to 53 lb (60 to 199 g/m ²)
Dimensions (width x depth x height)	19.5 x 16.5 x 22 in (495 x 419 x 559 mm)
Weight	3.9 lb (1.769 kg)

Booklet finisher

Product number	CZ285A
Type	Three separate bins; Automatic offset, inline stapling and stacking, and booklet making with saddle-stitching and V-folding
Stack	
Capacity	Mailbox mode: up to 1,300 sheets (bin 1), up to 1,700 sheets (bin 2), up to 150 sheets (bin 3) Stacker mode: up to 3,000 sheets (bin 1), up to 150 sheets (bin 2)
Custom media sizes	Letter, letter-R, legal, executive, 11 x 17 in, 8.5 x 13 in, 12 x 18 in; A3, A4, A4-R, A5, B5 (JIS), B4 (JIS), RA4, SRA4, 8K (270 x 390 mm), 8K (260 x 368 mm), 8K (7.75 x 10.75 mm), 16K (195 x 270 mm), 16K (184 x 260 mm), 16K (7.75 x 10.75 mm), SRA3, RA3
Media types	Paper (bond, color, letterhead, plain, preprinted, prepunched, recycled, rough), Labels, Cardstock, Transparencies
Media weights	16 to 68 lb (60 to 256 g/m ²)
Dimensions (width x depth x height)	33.6 x 26.3 x 43 in (854 x 668 x 1093 mm)
Weight	191.4 lb (87 kg)

Booklet finisher staples

Product number	CC383A
Cartridge capacity	HP 2-pack 2,000-staple cartridge (4,000 staples)

Stapler/stacker finisher

Product number	CZ994A
Type	Two bins; Automatic stapling and sheet stacking, sorting
Stack	
Capacity	Mailbox mode: up to 1,300 sheets (bin 1), up to 1,700 sheets (bin 2) Stacker mode: up to 3,000 sheets (bin 1)
Custom media sizes	Letter, letter-R, legal, executive, 11 x 17 in, 8.5 x 13 in, 12 x 18 in; A3, A4, A4-R, A5, B5 (JIS), B4 (JIS), RA4, SRA4, 8K (270 x 390 mm), 8K (260 x 368 mm), 8K (7.75 x 10.75 mm), 16K (195 x 270 mm), 16K (184 x 260 mm), 16K (7.75 x 10.75 mm), SRA3, RA3
Media types	Paper (bond, color, letterhead, plain, preprinted, prepunched, recycled, rough), Labels, Cardstock, Transparencies
Media weights	16 to 53 lb bond (60 to 199 g/m ²)
Dimensions (width x depth x height)	26 x 25.8 x 41.8 in (662 x 657 x 1063 mm)
Weight	149.6 lb (68 kg)
Staple	
Capacity	Up to 50 sheets
Position	Top left, top right, 2 left, 2 right, 2 top
Cartridge capacity	5,000 staples

Stapler/stacker finisher with 2/3 hole punch

Product number	CZ995A
Type	Two bins; Automatic stapling and sheet stacking, sorting; 2/3 hole punching
Stack	
Capacity	Mailbox mode: up to 1,300 sheets (bin 1), up to 1,700 sheets (bin 2) Stacker mode: up to 3,000 sheets (bin 1)
Custom media sizes	Letter, letter-R, legal, executive, 11 x 17 in, 8.5 x 13 in, 12 x 18 in; A3, A4, A4-R, A5, B5 (JIS), B4 (JIS), RA4, SRA4, 8K (270 x 390 mm), 8K (260 x 368 mm), 8K (7.75 x 10.75 mm), 16K (195 x 270 mm), 16K (184 x 260 mm), 16K (7.75 x 10.75 mm), SRA3, RA3
Media types	Paper (bond, color, letterhead, plain, preprinted, prepunched, recycled, rough), Labels, Cardstock, Transparencies
Media weights	16 to 53 lb (60 to 199 g/m ²)
Dimensions (width x depth x height)	33.6 x 26.3 x 43 in (854 x 668 x 1093 mm)
Weight	149.6 lb (68 kg)
Staple	
Capacity	Up to 50 sheets
Position	Top left, top right, 2 left, 2 right, 2 top
Cartridge capacity	5,000 staples

Stapler/stacker finisher staples

Product number	C8091A
Cartridge capacity	5,000 staples

The following accessories are compatible with the HP Color LaserJet Managed Flow MFP M880 series.



Booklet finisher
(A2W83A)



Booklet finisher with 2/3 hole punch
(A2W84A)



3-bin Stapler/stacker with output
(A2W80A)

Booklet finisher

Product number	A2W83A
Type	Three separate bins; Automatic offset, inline stapling and stacking, and booklet making with saddle-stitching and V-folding
Stack	
Capacity	Mailbox mode: up to 1,300 sheets (bin 1), up to 1,700 sheets (bin 2), up to 150 sheets (bin 3) Stacker mode: up to 3,000 sheets (bin 1), up to 150 sheets (bin 2)
Custom media sizes	Letter, letter-R, legal, executive, 11 x 17 in, 8.5 x 13 in, 12 x 18 in; A3, A4, A4-R, A5, B5 (JIS), B4 (JIS), RA4, SRA4, 8K (270 x 390 mm), 8K (260 x 368 mm), 8K (7.75 x 10.75 mm), 16K (195 x 270 mm), 16K (184 x 260 mm), 16K (7.75 x 10.75 mm), SRA3, RA3
Media types	Paper (bond, color, letterhead, plain, preprinted, prepunched, recycled, rough), Labels, Cardstock, Transparencies
Media weights	16 to 53 lb (60 to 199 g/m ²)
Dimensions (width x depth x height)	26.9 x 26.3 x 43 in (683 x 668 x 1093 mm)
Weight	167.7 lb (76.1 kg)

Booklet finisher staples

Product number	CC383A
Cartridge capacity	HP 2-pack 2,000-staple cartridge (4,000 staples)

Booklet finisher with 2/3 hole punch

Product number	A2W84A
Type	Three separate bins; Automatic offset, inline stapling and stacking, and booklet making with saddle-stitching and V-folding; 2/3 hole punching
Stack	
Capacity	Mailbox mode: up to 1,300 sheets (bin 1), up to 1,700 sheets (bin 2), up to 150 sheets (bin 3) Stacker mode: up to 3,000 sheets (bin 1), up to 150 sheets (bin 2)
Custom media sizes	Booklet making: Letter-R, legal, 11 x 17 in, 8.5 x 13 in, 12 x 18 in; A3, A4-R, B4 (JIS) Stapling: Letter, letter-R, legal, 11 x 17 in, 8.5 x 13 in; A3, A4, A4-R, B4 (JIS), 8K (270 x 390 mm) Hole punching: Letter, letter-R, legal, 8.5 x 13 in, 11 x 17 in; A3, A4, A4-R, B4 (JIS), 8K (270 x 390 mm)
Media types	Paper (bond, color, letterhead, plain, preprinted, prepunched, recycled, rough), Labels, Cardstock, Transparencies
Media weights	16 to 53 lb (60 to 199 g/m ²)
Dimensions (width x depth x height)	28.5 x 29 x 39.5 in (723.9 x 736.6 x 1003.3 mm)
Weight	183.2 lb (83.3 kg)

3-bin Stapler/stacker with output

Product number	A2W80A
Type	Three bins; Automatic stapling and sheet stacking, sorting
Stack	
Capacity	Mailbox mode: up to 1,300 sheets (bin 1), up to 1,700 sheets (bin 2) Stacker mode: up to 3,000 sheets (bin 1)
Custom media sizes	Letter, letter-R, legal, 11 x 17 in, 8.5 x 13 in; A3, A4, A4-R, B4 (JIS), 8K (270 x 390)
Media types	Paper (bond, color, letterhead, plain, preprinted, prepunched, recycled, rough, heavy rough), HP EcoSMART Lite, HP Matte 90g, Light 60-74g, Intermediate 85-95g, HP Matte 120g, HP Soft Gloss 120g, HP Glossy 120g, Mid-Weight 96-110g, Heavy 111-130g, Mid-Weight Glossy 96-110g, Heavy Glossy 111-130g, HP Matte 150g, HP Glossy 150g, Extra Heavy 131-175g, Heavy Glossy 131-175g, HP Matte 200g, HP Glossy 200g, Cardstock 176-220g, Card Glossy 176-220g
Media weights	16 to 53 lb (60 to 199 g/m ²)
Staple	
Capacity	Up to 15 sheets
Position	Top left, top right, 2 left, 2 right, 2 top
Cartridge capacity	5,000 staples
Dimensions (width x depth x height)	22.5 x 29 x 39.5 in (571.9 x 736.6 x 1003.3 mm)
Weight	120.1 lb (54.5 kg)

Stapler/stacker finisher staples

Product number	C8091A
Cartridge capacity	5,000 staples

Finishing accessories - HP A4 LaserJet



Sort

Ideal for separating documents that don't require binding



Staple

Ideal for multipage documents or reports

Workgroup

The following accessories are compatible with the HP LaserJet Managed E60155, E60165, and E60175.



Stapler/Stacker/Mailbox (LOH20A)

Stapler/Stacker/Mailbox

Product number	LOH20A
Type	Five bins; Automatic stapling and sheet stacking, sorting
Stack	
Capacity	800 sheets
Custom media sizes	5.83 x 8.27 to 8.5 x 14 in (148.5 x 210 to 216 x 356 mm)
Media types	Paper (plain, light, bond, recycled, heavy, pre-printed, pre-punched, colored, rough), Mono transparency, Labels, Letterhead
Media weights	16 to 43 lb (60 to 163 g/m ²)
Dimensions (width x depth x height)	18.7 x 19.8 x 16.9 in (475 x 504 x 429 mm)
Weight	25.4 lb (11.5 kg)
Staple	
Capacity	Up to 50 sheets
Position	Top left
Cartridge capacity	5,000 staples

Stapler/Stacker/Mailbox staples

Product number	J8J96A
Cartridge capacity	5,000 staples

Input accessories - HP A3 PageWide

The following accessories are compatible with the HP PageWide Managed Color P75250dn, HP PageWide Managed Color MFP P77440dn and P77940 series, HP PageWide Managed Color MFP P77950/P77960 series, HP PageWide Managed Color E75160dn, and HP PageWide Managed Color MFP E77650/E77660 series.



550-sheet paper tray (P1V16A)



550-sheet paper tray and cabinet (P1V17A)



3x550-sheet paper tray and stand (P1V18A)



4,000-sheet high-capacity paper tray and stand (P1V19A)

550-sheet paper tray

Product number	P1V16A
Stack	
Capacity	Up to 550 sheets
Media sizes	11 x 17 in, Oficio (8.5 x 13 in), letter, letter-R, legal, executive; A3, A4, A4-R, A5, SRA4, B4, B5 (JIS), 8K (270 x 390 mm), 16K (195 x 270 mm), 8K (260 x 368 mm), 16K (184 x 260 mm), 8K (273 x 394 mm), 16K (197 x 273 mm), Oficio (216 x 340 mm)
Custom media sizes	8.27 x 5.83 to 11.7 x 17 in (210 x 148 to 297 x 432 mm)
Media types	Paper (plain, inkjet, inkjet brochure/glossy), Photo Paper, Envelopes, Labels, Cards
Media weights	16 to 58 lb (60 to 220 g/m ²)
Dimensions (width x depth x height)	27.56 x 9.25 x 25.39 in (700 x 235 x 645 mm)
Weight	24.99 lb (11.34 kg)

550-sheet paper tray and stand

Product number	P1V17A
Input	
Capacity	Up to 550 sheets
Media sizes	11 x 17 in, Oficio (8.5 x 13 in), letter, letter-R, legal, executive; A3, A4, A4-R, A5, SRA4, B4, B5 (JIS), 8K (270 x 390 mm), 16K (195 x 270 mm), 8K (260 x 368 mm), 16K (184 x 260 mm), 8K (273 x 394 mm), 16K (197 x 273 mm), Oficio (216 x 340 mm)
Custom media sizes	8.27 x 5.83 to 11.7 x 17 in (210 x 148 to 297 x 432 mm)
Media types	Paper (plain, inkjet, inkjet brochure/glossy), Photo Paper, Envelopes, Labels, Cards
Media weights	16 to 58 lb (60 to 220 g/m ²)
Dimensions (width x depth x height)	27.56 x 9.25 x 25.39 in (700 x 235 x 645 mm)
Weight	24.99 lb (11.34 kg)

3x550-sheet paper tray and stand

Product number	P1V18A
Input	
Capacity	Up to 1,650 sheets
Media sizes	11 x 17 in, Oficio (8.5 x 13 in), letter, letter-R, legal, executive; A3, A4, A4-R, A5, SRA4, B4, B5 (JIS), 8K (270 x 390 mm), 16K (195 x 270 mm), 8K (260 x 368 mm), 16K (184 x 260 mm), 8K (273 x 394 mm), 16K (197 x 273 mm), Oficio (216 x 340 mm)
Custom media sizes	8.27 x 5.83 to 11.7 x 17 in (210 x 148 to 297 x 432 mm)
Media types	Paper (plain, inkjet, inkjet brochure/glossy), Photo Paper, Envelopes, Labels, Cards
Media weights	16 to 58 lb (60 to 220 g/m ²)
Dimensions (width x depth x height)	31.10 x 29.92 x 23.15 in (790 x 760 x 588 mm)
Weight	93.65 lb (42.48 kg)

High-capacity paper tray and stand

Product number	P1V19A
Input	
Capacity	Up to 4,000 sheets
Media sizes	Letter; A4
Media types	Paper (plain, inkjet, inkjet brochure/glossy), Photo Paper, Envelopes, Labels, Cards
Media weights	16 to 58 lb (60 to 220 g/m ²)
Dimensions (width x depth x height)	31.10 x 29.92 x 23.15 in (790 x 760 x 588 mm)
Weight	110.16 lb (49.97 kg)

Staple Cartridge Refill

Product number	J8J96A
Cartridge capacity	5,000 staples

Input accessories - HP A4 PageWide

The following accessories are compatible with the HP PageWide Managed Color P55250dw and MFP P57750dw.



550-sheet paper tray
(D3Q23A)



2x500-sheet paper tray and stand
(P0V04A)

500-sheet paper tray

Product number	D3Q23A
Stack	
Capacity	Up to 500 sheets
Media sizes	Letter/A4
Media types	Plain paper (light, intermediate, mid-weight, heavy, extra heavy, pre-punched, recycled, bond, other inkjet plain paper), Photo (glossy, gloss, soft gloss, satin, matte, other inkjet photo), Envelopes, Labels, Cards, Specialty papers (glossy brochure, matte brochure, tri-fold brochure, Hagaki, greeting cards, other inkjet specialty paper)
Media weights	16 to 32 lb (60 to 120 g/m ²)
Dimensions (width x depth x height)	20.3 x 15.5 x 5.5 in (515 x 395 x 140 mm)
Weight	12.5 lb (5.67 kg)

2x500-sheet paper tray and stand

Product number	P0V04A
Input	
Capacity	Up to 1,000 sheets
Media sizes	Letter/A4
Media types	Plain paper (light, intermediate, mid-weight, heavy, extra heavy, pre-punched, recycled, bond, other inkjet plain paper), Photo (glossy, gloss, soft gloss, satin, matte, other inkjet photo), Envelopes, Labels, Cards, Specialty papers (glossy brochure, matte brochure, tri-fold brochure, Hagaki, greeting cards, other inkjet specialty paper)
Media weights	16 to 32 lb (60 to 120 g/m ²)
Dimensions (width x depth x height)	26.3 x 28.2 x 25.2 in (667 x 717 x 640 mm)
Weight	77 lb (35 kg)

The following accessories are compatible with the HP PageWide Managed Color E55650dn and MFP E58650.



500-sheet paper tray
(G1W43A)



Cabinet and Stand
(G1W44A)



3x500-sheet paper tray and stand
(G1W45A)

500-sheet paper tray

Product number	G1W43A
Stack	
Capacity	Up to 500 sheets
Media sizes	Letter/A4
Media types	Paper (plain, inkjet, inkjet brochure/glossy), Photo Paper, Envelopes, Labels, Cards
Media weights	Plain paper: 16 to 32 lb (60 to 120 g/m ²); Photo paper: 33 to 80 lb (124 to 300 g/m ²); Envelope: 20 to 24 lb (75 to 90 g/m ²); Brochure: 32 to 48 lb (120 to 181 g/m ²); Card: 90 to 110 lb (243 to 298 g/m ²)
Dimensions (width x depth x height)	20.24 x 15.58 x 6.34 in (51.41 x 39.58 x 16.10 cm)
Weight	12.13 lb (5.5 kg)

Cabinet and Stand

Product number	G1W44A
Input	
Media sizes	Letter/A4
Dimensions (width x depth x height)	26.3 x 22.32 x 20.19 in (668 x 567 x 513 mm)
Weight	57.29 lb (26 kg)

3x500-sheet paper tray and stand

Product number	G1W45A
Input	
Capacity	Up to 1,500 sheets
Media sizes	Letter/A4
Media types	Paper (plain, inkjet, inkjet brochure/glossy), Photo Paper, Envelopes, Labels, Cards
Media weights	Plain paper: 16 to 32 lb (60 to 120 g/m ²); Photo paper: 33 to 80 lb (124 to 300 g/m ²); Envelope: 20 to 24 lb (75 to 90 g/m ²); Brochure: 32 to 48 lb (120 to 180 g/m ²); Card: 90 to 110 lb (330 to 405 g/m ²)
Dimensions (width x depth x height)	26.3 x 28.35 x 26 in (668 x 720 x 660 mm)
Weight	83.77 lb (38 kg)

Finishing accessories - PageWide



Sort

Ideal for separating documents that don't require binding



Staple

Ideal for multipage documents or reports



Punch

Ideal for papers to be filed in binders

The following accessory is required (and must be purchased separately) for the HP PageWide Managed Color Flow MFP E77650z+ and Flow MFP E77660z+.



External finisher (Z4L04A)

External finisher

Product number	Z4L04A
Type	Top tray: Sort, Stack Main tray: Sort, Stack, Staple, optional Hole Punch
Stack	
Capacity	Top tray: up to 250 sheets Main (finishing) tray: up to 3,000 sheets
Media sizes	Top tray: Letter, Legal, Executive, Statement, Oficio, 11 x 17 in, envelopes (#10, Monarch); A3, A4, A5, B4, B5 (JIS), Oficio, 8K, 16K, envelopes (C4, C5, C6, DL) Main tray: Letter, Legal, Executive, Statement, Oficio, 11 x 17 in; A3, A4, A5, B4, B5 (JIS), Oficio, 8K, 16K
Custom media sizes	Top tray: 3.9 x 5.8 to 12 x 18 in (98 x 148 to 305 x 457 mm) Main tray: 3.9 x 5.8 to 12 x 18 in (98 x 148 to 305 x 457 mm)
Media types	Top tray: Bond, Colored 75-90g, Envelope, HP EcoFFICIENT, Letterhead, Plain 75-84g, Preprinted, Prepunched, Recycled 60-90g, Light 60-74g, Intermediate 85-95g, HP Inkjet Matte 120g, HP Inkjet Matte 180g, HP Inkjet Gloss 180g, Mid-Weight 96-110g, Heavy 111-130g, Extra Heavy 131-175g, Cardstock 176-220g, Mid-Weight Glossy 96-110g, Heavy Glossy 111-130g, Extra Heavy Glossy 131-175g, Card Glossy 176-220g, Labels 120-150g, Heavy Envelope, Rough, HP Advanced Photo Main tray: Bond, Colored 75-90g, HP EcoFFICIENT, Letterhead, Plain 75-84g, Preprinted, Prepunched, Recycled 60-90g, Light 60-74g, Intermediate 85-95g, HP Inkjet Matte 120g, HP Inkjet Matte 180g, HP Inkjet Gloss 180g, Mid-Weight 96-110g, Heavy 111-130g, Extra Heavy 131-175g, Cardstock 176-220g, Mid-Weight Glossy 96-110g, Heavy Glossy 111-130g, Extra Heavy Glossy 131-175g, Card Glossy 176-220g, Rough, HP Advanced Photo
Media weights	Top tray: 14 to 80 lb (52 to 300 g/m ²); Main tray: 14 to 93 lb (52 to 350 g/m ²)
Staple	
Capacity	Up to 50 sheets; 24 lb (90 g/m ²) or less
Position	Corner (single 45° or single flat), center (dual)
Cartridge capacity	5,000 staples
Dimensions (width x depth x height)	25.2 x 23.2 x 40 in (641 x 590 x 1015 mm)
Weight	88.2 lb (40 kg)

External finisher staples

Product number	Y1G14A
Cartridge capacity	5,000 staples

2/3 hole punch module for External finisher

Product number	Y1G10A
Punch	
Media sizes	Letter, Legal, Executive, Statement, Oficio 8.5 x 13 in, 11 x 17 in; A4, A3, A5, B4 (JIS), B5 (JIS), 8K 270 x 390 mm, 16K 195 x 270 mm
Media weights	14 to 80 lb (52 to 300 g/m ²)
Dimensions (width x depth x height)	3.14 x 19.09 x 9.25 in (80 x 485 x 235 mm)
Weight	6.3 lb (2.8 kg)

Ordering information

Use accessories specifically designed for the printer to help provide efficient performance. To order the accessories in this document, go to hp.com. To contact HP by country, please visit hp.com/go/contact.



For more information, visit

hp.com

¹ Glossy media types not supported by HP LaserJet Managed MFP E72525, MFP E72530, MFP E72535, MFP E82540, MFP E82550, or MFP E82560.

² Tray heater accessories (Y1G22A #BGJ and Y1G22A #B19) are optional accessories. The tray heater can be used in trays 2 and 3 of the printer, with the Dual cassette feeders (Y1F97A and Y1F98A), and with the High-capacity input trays (Y1F99A and Y1G21A).

³ Purchase of the Inner finisher (Y1G00A) for the HP LaserJet Managed MFP E72525, MFP E72530, MFP E72535, or HP Color LaserJet Managed MFP E77822, MFP E77825, MFP E77830 also requires purchase of the Second exit (Y1G23A).

⁴ Purchase of the Booklet finisher (Y1G07A) or Stapler/stacker finisher (Y1G18A) for the HP LaserJet Managed MFP E72525, MFP E72530, or MFP E72535 also requires purchase of Second exit (Y1G23A) and Spacer (Y1G24A). Purchase of the Booklet finisher (Y1G07A) or Stapler/stacker finisher (Y1G18A) for the HP Color LaserJet Managed MFP E77822, MFP E77825, or MFP E77830 also requires purchase of the Second exit (Y1G23A).