

Panasonic

ideas for life

Reference Exhibit

55-inch class **TH-55LFV50**
Ultra-Narrow Bezel LCD Display



The narrow bezel design is ideal for large signage use. This energy-saving display is gentle on the environment.

01 Narrow Bezel

Bezel-to-Bezel: 0.21" (5.3 mm)

An ultra-narrow bezel design reduces the width of screen-joining borders to only 0.21" (5.3 mm) in wall videos. The borders are hardly visible even in very large-screen configurations, so images are more dynamic and natural.



02 High Visibility

High 800 cd/m² brightness and a wide viewing angle

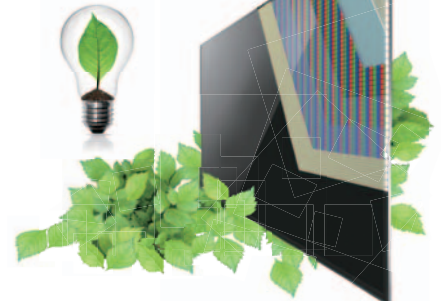
LCD panels with a full 800 cd/m² of brightness ensure high visibility even in large public spaces. The IPS system also provides a wide viewing angle.



03 Low Power Consumption

Highly efficient LED LCD panel provides high-level energy savings.

In addition to producing crisp, clear images, they also offer highly uniform brightness when used as a video wall.



55-inch class TH-55LFV50

Ultra-Narrow Bezel LCD Display

Product specification (Design and specification subject to change without notice)

Model No.	TH-55LFV50
DISPLAY	
Screen Size (Diagonal)	55-inch class
Aspect Ratio	16:9
Panel Type	DIRECT LED
Number of Pixels (H x V)	1,920 x 1,080 pixels
Brightness	800 cd/m ²
Contrast Ratio	1,200:1
CONNECTION TERMINAL	
VIDEO IN	BNC x 1
Audio IN	RCA (L/R) x 1 (Shared with Component IN)
HDMI IN	HDMI x 1
Component IN	BNC x 1 set
Audio IN	RCA (L/R) x 1 (Shared with VIDEO IN)
DVI-D IN	DVI-D 24-pin x 1
Audio IN	M3 JACK x 1 set (Side) (Shared with PC IN)
PC IN	MINI D-SUB 15-pin x1(Female)
AUDIO IN	M3 JACK x 1 set (Side) (Shared with DVI-D IN)
DVI-I OUT	DVI-I 29-pin x 1
CONTROL	
SERIAL IN / OUT	D-SUB 9-pin x 1/ x 1, RS-232C Compatible
LAN	RJ45 x 1 (Web browser control)
IR IN / OUT	M3 JACK x 1/ x 1
ELECTRICAL	
Power Requirements*	110-127 V AC, 50/60 Hz, 120 V AC, 50/60 Hz, 220-240 V AC, 50/60 Hz
Power Consumption	Less than 320 W
AUDIO	
Speaker OUT	External Speaker JACK (Side), 20 W [10 W + 10 W]
Line OUT	RCA pin (L/R) x 1 set (Side), Output level: Variable (-∞ - 0 dB)
MECHANICAL	
Dimensions (W x H x D)	47.9" x 27.1" x 4.8" (1,216 x 687 x 122 mm)
Weight	Approx. 79.4 lbs (36 kg)
ENVIRONMENTAL	
Operating Environment	Temperature: 32 °F to 104 °F (0 °C to 40 °C) Humidity: 20% to 80% (Non condensation)
OPTIONS	
-Remote Control Kit, - Cover Frame Kit	

*Power requirements vary depending on the shipping destination.

Features

- Ultra-narrow bezel
- 800-cd/m² brightness
- Wide viewing angle with IPS panel
- DVI, RS232-C daisy chain capability
- IR through for remote control
- ID control with serial control
- VESA 400 x 400-mm compatibility
- Landscape and portrait orientation