



- ENGLISH
- 繁體中文
- 한국어
- ภาษาไทย
- BAHASA INDONESIA
- TIẾNG VIỆT

Canon PIXMA iX6800 series
PIXMA iX6700 series

Installation Space

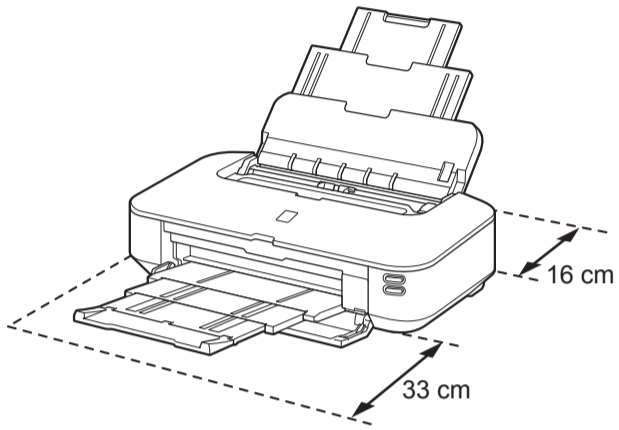
安裝空間

설치 공간

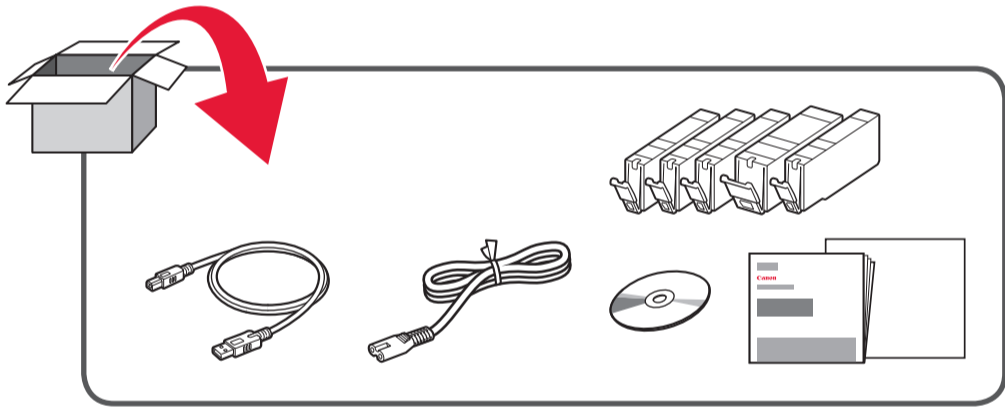
พื้นที่การติดตั้ง

Ruang Instalasi

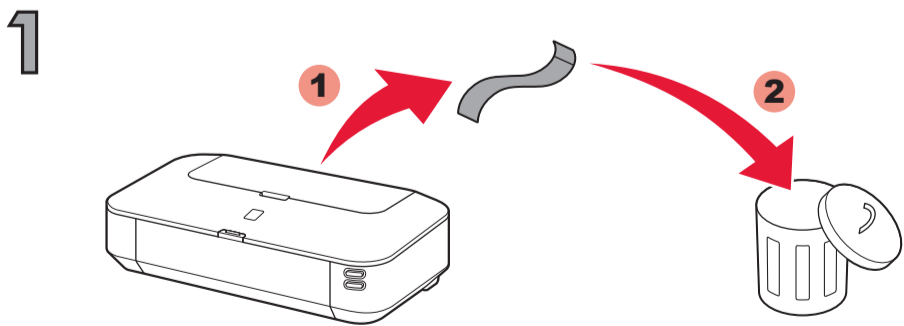
Không gian cài đặt



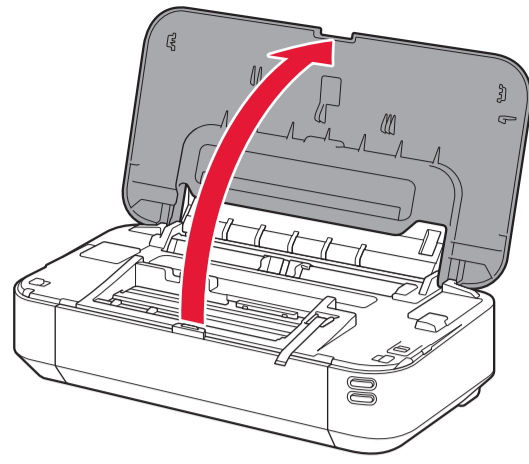
1



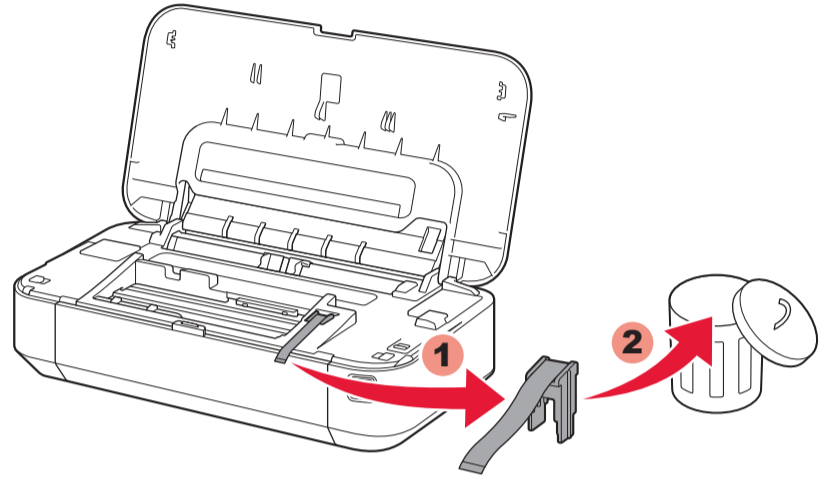
2



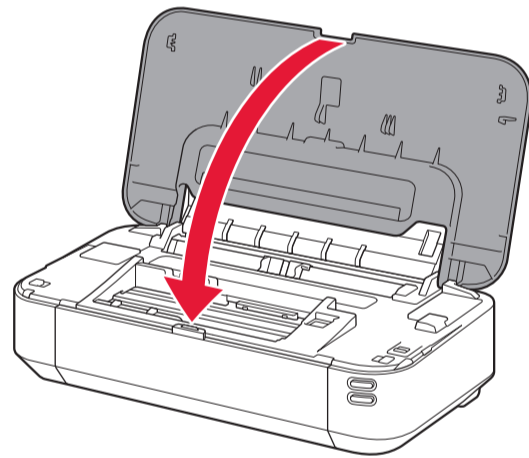
2



3

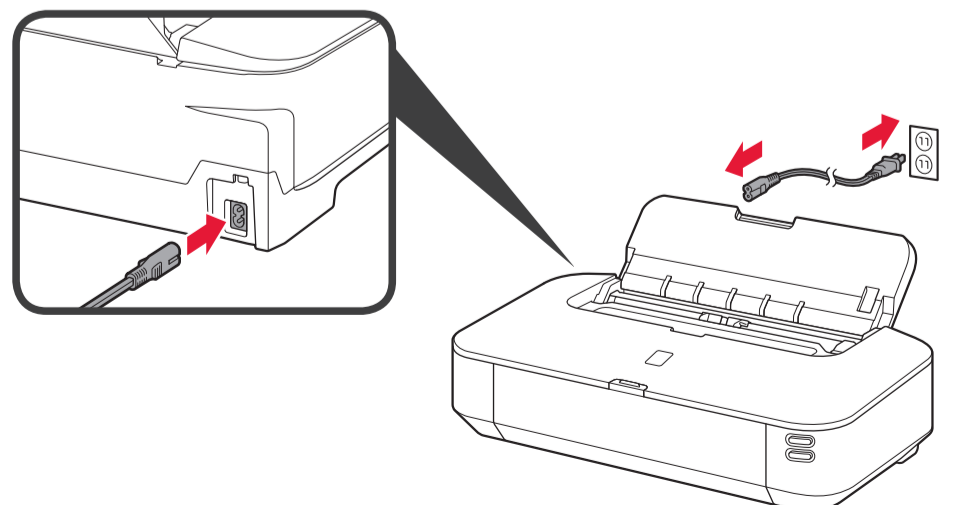


4

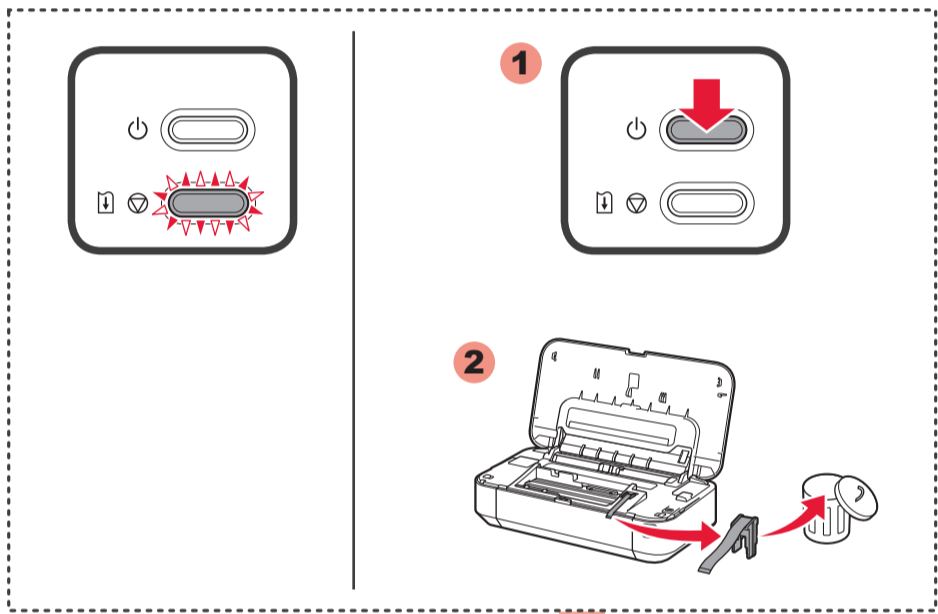
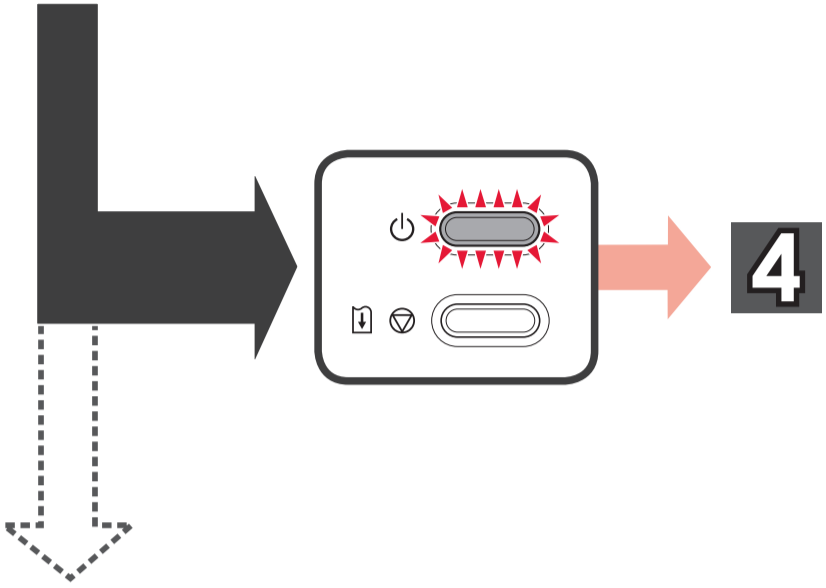
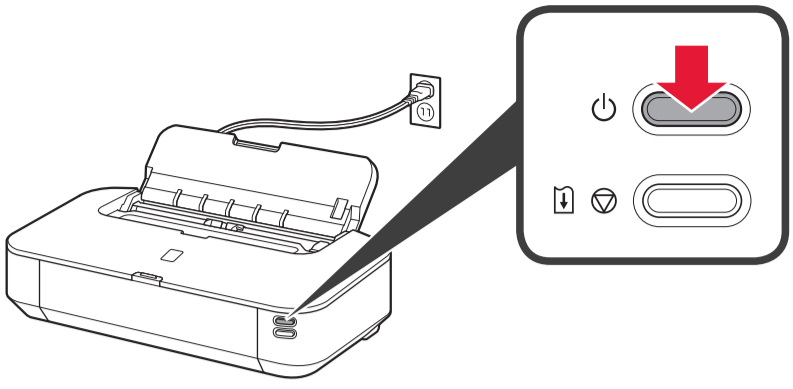


3

1



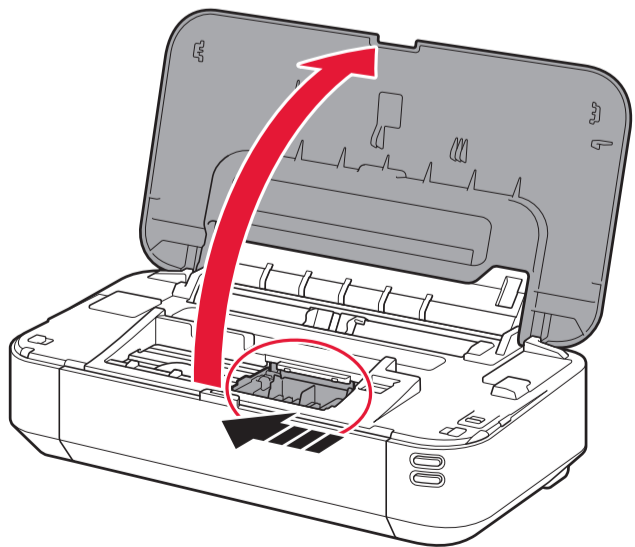
2



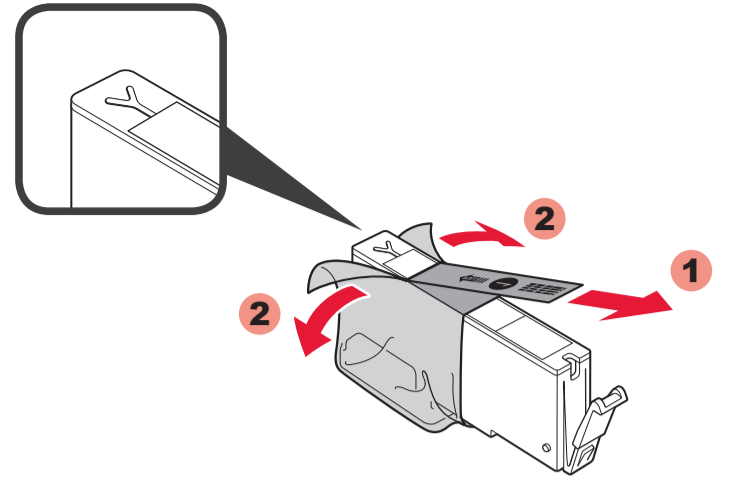
2 2

4

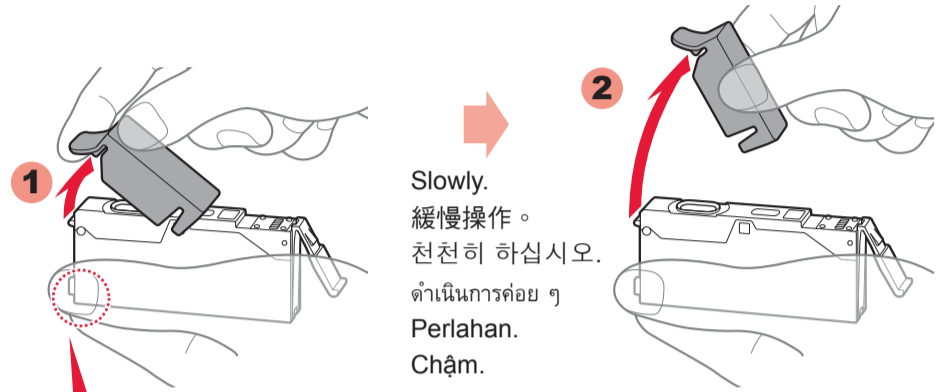
1



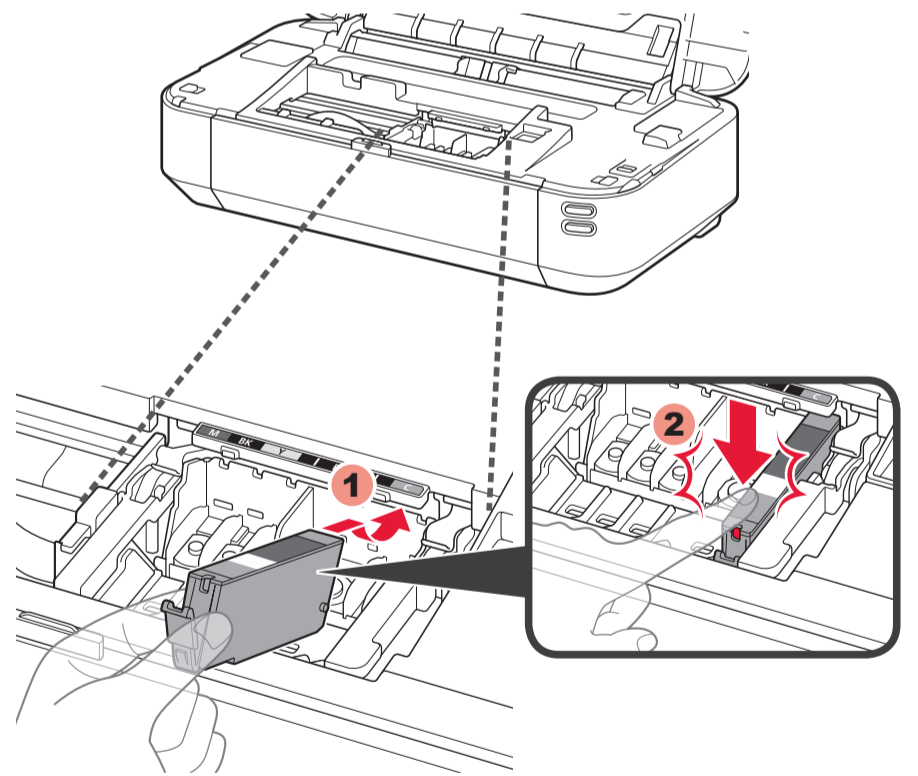
2



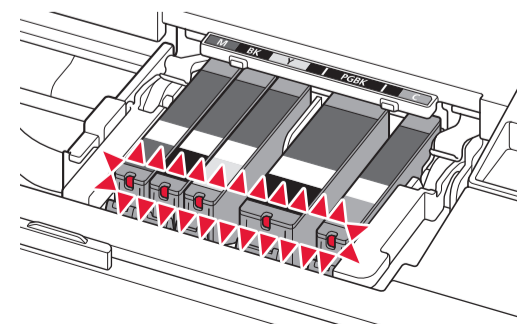
3



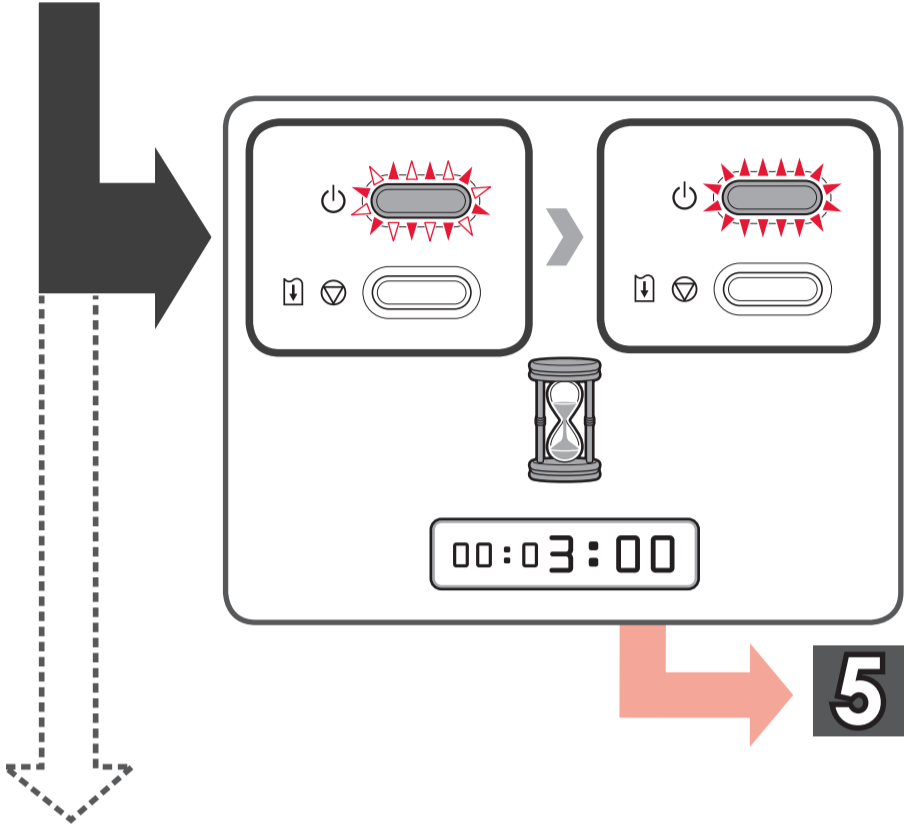
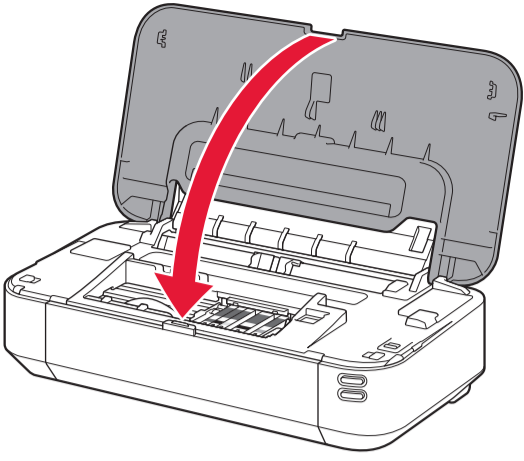
4



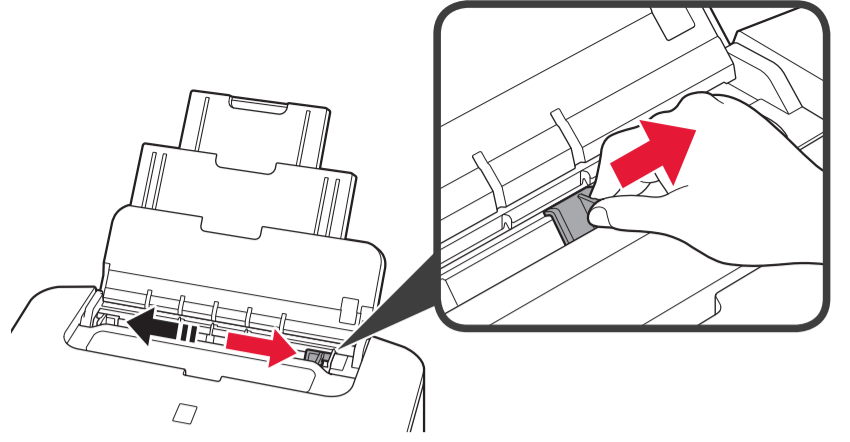
5



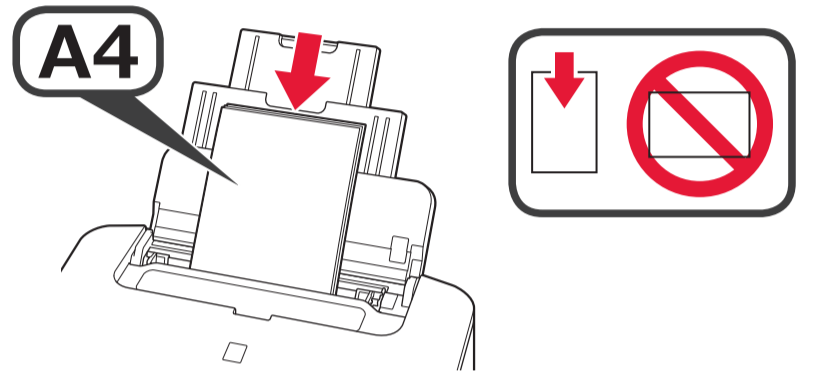
6



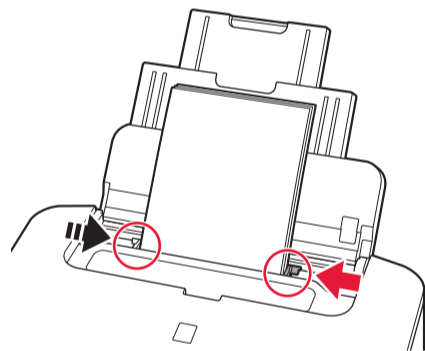
2



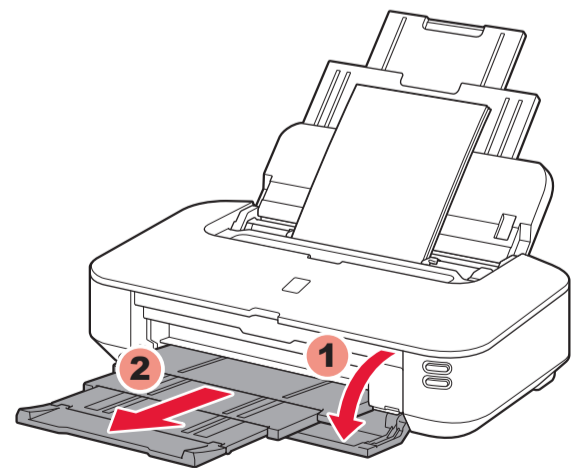
3



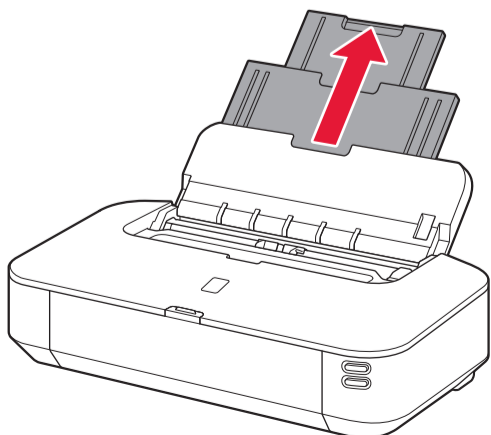
4



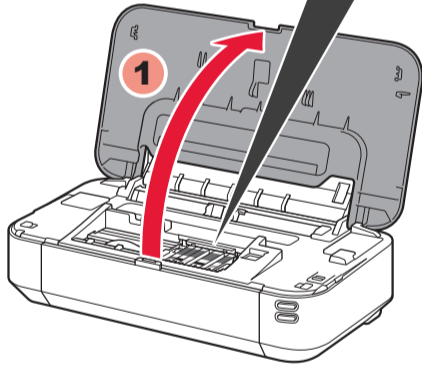
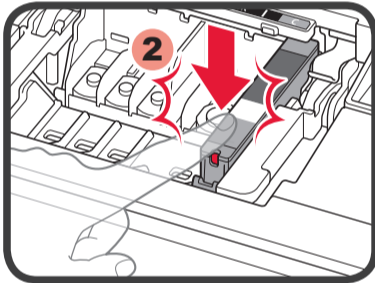
5



1

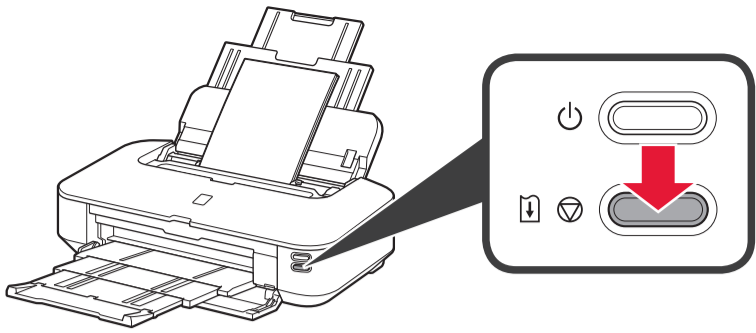


5

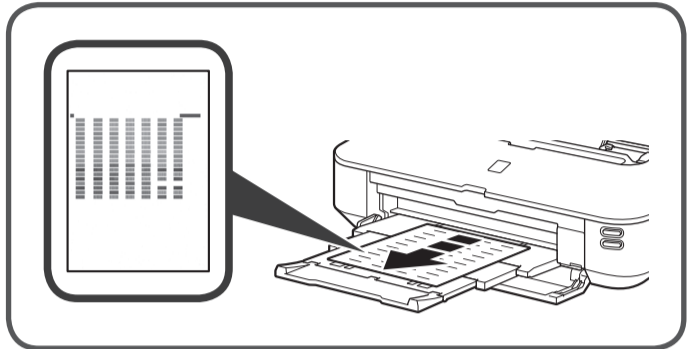


4 4

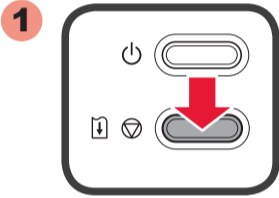
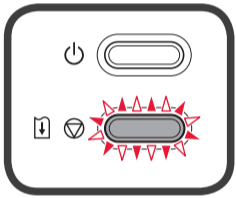
6



00:04:00



6



If the **Alarm** lamp flashes orange, press the **RESUME/CANCEL** button, then proceed to next chapter. Print Head Alignment can also be performed after installation.

如果警告指示燈閃爍橙色，按**重試/取消**按鈕，然後繼續執行下一章。安裝完成後也可以執行列印頭校準(Print Head Alignment)。

알람(Alarm) 램프가 오렌지색으로 깜박이면 **계속/취소(RESUME/CANCEL)** 버튼을 누른 후 다음 장으로 이동하십시오. 또한 설치한 후 프린트 헤드 정렬(Print Head Alignment)을 수행할 수 있습니다.

หากสัญญาณไฟ เตือน กระพริบเป็นสีส้ม ให้กดปุ่ม **RESUME/CANCEL** จากนั้นดำเนินการตามบทถัดไป การจัดการตำแหน่งหัวพิมพ์(Print Head Alignment) ยังสามารถดำเนินการได้หลังจากการติดตั้ง

Jika lampu **Alarm** berkedip oranye, tekan tombol **RESUME/CANCEL**, kemudian lanjutkan ke bab berikutnya. Penjajaran Kepala Cetak(Print Head Alignment) juga dapat dilakukan setelah instalasi.

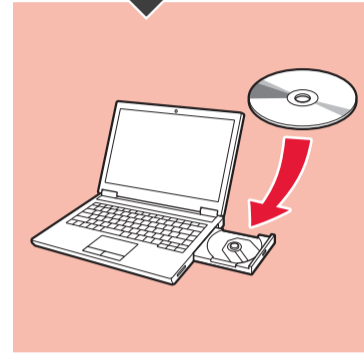
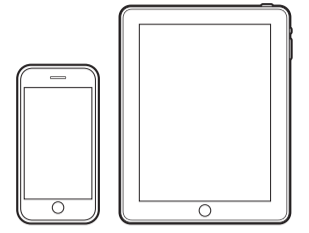
Nếu đèn **Alarm** nhấp sáng màu cam, nhấn nút **RESUME/CANCEL**, rồi chuyển sang chương tiếp theo. Print Head Alignment có thể được tiến hành sau khi cài đặt.

6

6

iX6800 series
iX6700 series

iX6800 series



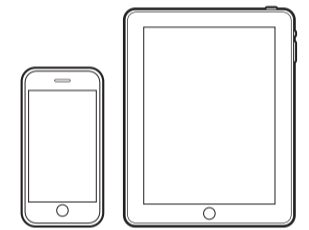
canon.com/ijsetup



Quick Menu



http://



canon.com/ijsetup



http://

