

Inspiron 22

3000 Series

Setup and Specifications

Computer Model: Inspiron 22-3265
Regulatory Model: W17B
Regulatory Type: W17B001



Notes, cautions, and warnings



NOTE: A NOTE indicates important information that helps you make better use of your computer.



CAUTION: A CAUTION indicates either potential damage to hardware or loss of data and tells you how to avoid the problem.



WARNING: A WARNING indicates a potential for property damage, personal injury, or death.

© 2016 Dell Inc. All rights reserved. This product is protected by U.S. and international copyright and intellectual property laws. Dell and the Dell logo are trademarks of Dell Inc. in the United States and/or other jurisdictions. All other marks and names mentioned herein may be trademarks of their respective companies.

2016-04

Rev. A00

Contents

Set up your computer.....	4
Views.....	8
Front.....	8
Left.....	9
Right.....	10
Back.....	11
Specifications.....	12
Dimensions and weight.....	12
System information.....	12
Memory.....	13
Ports and connectors.....	13
Communications.....	13
Video.....	14
Audio.....	14
Storage.....	14
Media-card reader.....	15
Display.....	15
Camera.....	15
Stand.....	16
Power adapter.....	16
Computer environment.....	16
Getting help and contacting Dell.....	18
Self-help resources.....	18
Contacting Dell.....	18

Set up your computer

- 1 Set up the stand.

Pedestal Stand



Easel stand



- 2 Set up the keyboard and mouse.
See the documentation that shipped with the keyboard and mouse.

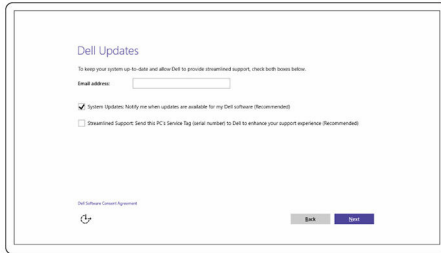
- 3 Connect the power adapter and press the power button.



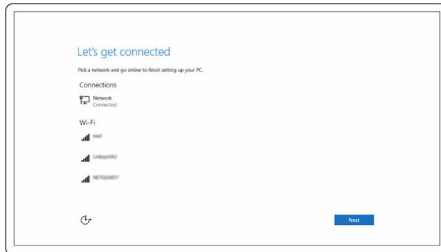
4 Finish operating system setup.

For Windows:

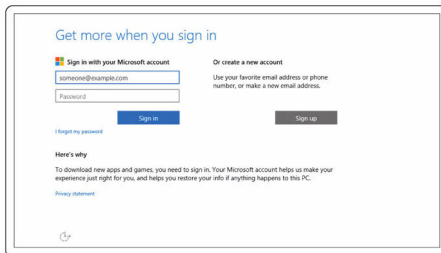
a) Enable Dell updates.



b) Connect to your network.



c) Sign-in to your Microsoft account or create a local account.



For Ubuntu:

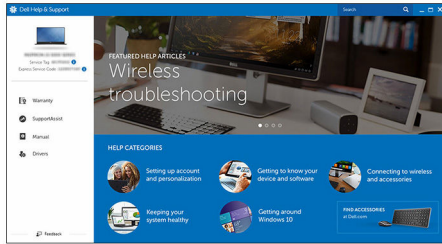
Follow the instructions on the screen to finish setup.

5 Explore Dell resources on your desktop.



Register your computer

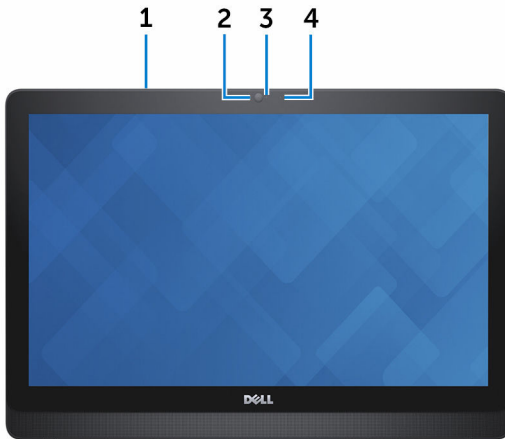
Dell Help & Support



SupportAssist — Check and update your computer

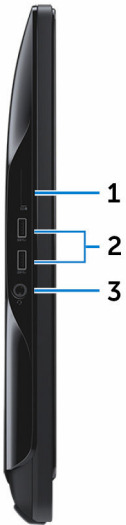
Views

Front



- 1 Microphone (for touch-screen model only)**
Provides high-quality digital sound input for audio recording, voice calls, and so on.
- 2 Camera**
Allows you to video chat, capture photos, and record videos.
- 3 Camera-status light**
Turns on when the camera is in use.
- 4 Microphone (non-touch screen model only)**
Provides high-quality digital sound input for audio recording, voice calls, and so on.

Left



1 Media-card reader

Reads from and writes to media cards.

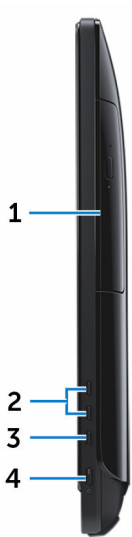
2 USB 3.0 ports (2)

Connect peripherals such as storage devices, printers, and so on.
Provides data transfer speeds up to 5 Gbps.

3 Headset port

Connect a headphone, a microphone, or a headset (headphone and microphone combo).

Right



1 **Optical drive (optional)**

Reads from and writes to CDs and DVDs.

2 **Brightness increase buttons (2)**

Press to increase or decrease the brightness of the screen.

3 **Screen off/on button**

Press and hold to turn-off the display; press again to turn-on the display.

4 **Power button**

Turns on your computer or changes the power state of your computer.

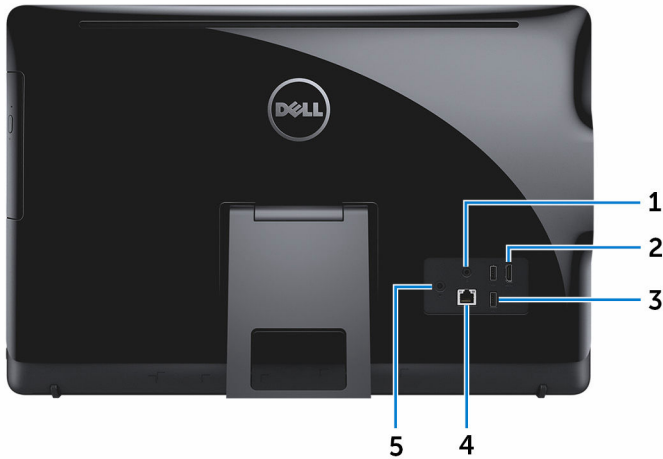
Press to put the computer in sleep state if it is turned on.

Press and hold for 4 seconds to force shut-down the computer.



NOTE: You can customize the power-button behavior in Power Options. For more information, see *Me and My Dell* at www.dell.com/support/manuals

Back



1 Audio-out port

Connect audio-output devices such as speakers, amplifiers, and so on.

2 HDMI-out port

Connect a TV or other HDMI-in enabled devices. Provides video and audio output.

3 USB 2.0 ports (2)

Connect peripherals such as storage devices, printers, and so on. Provides data transfer speeds up to 480 Mbps.

4 Network port

Connect an Ethernet (RJ45) cable from a router or a broadband modem for network or internet access.

The two lights next to the connector indicate the connectivity status and network activity.

5 Power-adaptor port

Connect a power adapter to provide power to your computer.

GUID-82A2A16C-C2F9-4BD1-82B4-2DB4AA5BD1B1

Specifications

GUID-B1320D76-ACF1-49F8-8328-B4A204A261CA

Dimensions and weight

Height	<ul style="list-style-type: none">Easel stand – 349.55 mm (13.76 in)Pedestal stand – 402.54 mm (15.85 in)		
Width	526.20 mm (20.72 in)		
Depth	With easel stand	With pedestal stand	Without stand
Touch screen	55.85 mm (2.20 in)	205.60 mm (8.09 in)	33.10 mm (1.30 in)
Non-touch screen	56.95 mm (2.24 in)	205.60 mm (8.09 in)	34.20 mm (1.35 in)
Weight (maximum)			
Touch screen	5.35 kg (11.78 lb)	7.17 kg (15.79 lb)	5.36 kg (11.80 lb)
Non-touch screen	4.90 kg (10.79 lb)	6.25 kg (13.77 lb)	4.43 kg (9.75 lb)



NOTE: The weight of your laptop varies depending on the configuration ordered and the manufacturing variability.

GUID-E43EB254-DB03-4FD8-97C5-1671C26C754B

System information

Computer model	Inspiron 22-3265
Processor	<ul style="list-style-type: none">AMD A8-7410AMD A6-7310AMD E2-7110

System chipset

Integrated in processor

GUID-649D90D6-4AB8-49F8-AE89-E79D90553F6D

Memory

Slots	Two SODIMM slots
Type	DDR3L
Speed	Up to 1600 MHz
Configurations supported	2GB, 4GB, 6GB, 8GB, 10GB, 12GB and 16GB

GUID-A691F1FB-D8FC-456D-B469-A69B2000588F

Ports and connectors

External:

Network	One RJ45 port
USB	<ul style="list-style-type: none">• Two USB 2.0 ports• Two USB 3.0 ports
Audio/Video	<ul style="list-style-type: none">• One HDMI-out port• One audio line-out port• One headset port

Internal:

M.2 card	One M.2 slot for WLAN and Bluetooth combo
----------	---

GUID-53B29D4C-6937-41D7-963A-1330EFCE1684

Communications

Ethernet	10/100/1000 Mbps Ethernet controller integrated on system board
Wireless	<ul style="list-style-type: none">• Wi-Fi 802.11ac• Wi-Fi 802.11b/g/n

- Bluetooth 4.0

GUID-FAA52611-EF15-4A21-BB32-C2844A02C0AB

Video

	Integrated	Discrete
Controller	Integrated in processor	AMD Radeon R5 A330
Memory	Shared system memory	2 GB DDR3L

GUID-8F279FBA-E60A-44D9-9232-E488052D99EE

Audio

Controller	Realtek ALC3661 Waves MaxxAudio Pro
Speakers	Two
Speaker Output	<ul style="list-style-type: none"> • Average – 3 W • Peak – 3.5 W
Microphone	Integrated Single Digital Microphone
Volume controls	Program menus

GUID-3682AFE2-5950-4A42-BDF2-47E0112E3775

Storage

Interface	<ul style="list-style-type: none"> • SATA 3 Gbps for optical drive • SATA 6 Gbps for hard drive
Hard drive	One 2.5-inch drive
Optical drive	One 9.5-mm DVD+/-RW drive (optional)

GUID-E5388A77-E590-4C74-B121-129B48361B8A

Media-card reader

Type	One 4-in-1 slot
Cards supported	<ul style="list-style-type: none">• SD card• MultiMediaCard (MMC)• SD Extended Capacity (SDXC) card• SD High Capacity (SDHC) card

GUID-B88EB812-7B86-432E-9994-E74446DD6D16

Display

Type	<ul style="list-style-type: none">• 21.5-in FHD+ touch screen• 21.5-in FHD+ non-touch screen
Resolution (maximum)	1920 x 1080
Pixel pitch	0.2479 mm x 0.2479 mm
Height	292.2 mm (11.50 in)
Width	497.6 mm (19.60 in)
Diagonal	546.1 mm (21.5 in)
Refresh rate	60 Hz
Controls	Brightness can be controlled through the display-brightness increase/decrease button

GUID-4F590991-4A62-4E14-A4A5-BAD702B61E4E

Camera

Resolution	<ul style="list-style-type: none">• Still image: 0.92 megapixels• Video: 1280 x 720 (HD) at 30 fps (maximum)
Diagonal viewing angle	74 degrees

GUID-85F9867A-AB2E-4D82-972C-8701BA90CC50

Stand

	Easel	Pedestal
Height	175 mm (6.89 in)	228.5 mm (9.0 in)
Width	120 mm (4.72 in)	225.6 mm (8.88 in)
Depth	22.76 mm (0.90 in)	205.6 mm (8.09 in)
Weight	0.63 kg (1.39 lb)	1.81 kg (3.99 lb)

GUID-17D38033-2032-4B4B-907F-80887CEDE03C

Power adapter

Type	65W	90W
Input Voltage	100 VAC to 240 VAC	
Input frequency	50 Hz to 60 Hz	
Input current (maximum)	1.70A	2.50A
Output current (continuous)	3.34A	4.62A
Rated output voltage	19.50 VDC	
Temperature range: Operating	0°C to 40°C (32°F to 104°F)	
Temperature range: Storage	-40°C to 70°C (-40°F to 158°F)	

GUID-4871A1E8-6003-4265-A7EC-A6D1BE7DB87A

Computer environment

Airborne contaminant level: G1 as defined by ISA-S71.04-1985

	Operating	Storage
Temperature range	0°C to 35°C (32°F to 95°F)	-40°C to 65°C (-40°F to 149°F)
Relative humidity (maximum)	10% to 90% (non-condensing)	0% to 95% (non-condensing)
Vibration (maximum)*	0.66 GRMS	1.30 GRMS

	Operating	Storage
Shock (maximum)	110 G [†]	160 G [‡]
Altitude (maximum)	-15.2 m to 3048 m (- 50 ft to 10,000 ft)	-15.2 m to 10,668 m (- 50 ft to 35,000 ft)

* Measured using a random vibration spectrum that simulates user environment.

† Measured using a 2 ms half-sine pulse when the hard drive is in use.

‡ Measured using a 2 ms half-sine pulse when the hard-drive head is in parked position.

Getting help and contacting Dell

Self-help resources

You can get information and help on Dell products and services using these self-help resources:

Information about Dell products and services www.dell.com

Dell Help & Support app



Get started app



Accessing help in Windows 10

In Windows search, type **Help and Support**, and press **Enter**.

Online help for operating system

www.dell.com/support/windows

www.dell.com/support/linux

Troubleshooting information, user manuals, setup instructions, product specifications, technical help blogs, drivers, software updates, and so on


www.dell.com/support


Learn about your operating system, setting up and using your computer, data backup, diagnostics, and so on.

See *Me and My Dell* at www.dell.com/support/manuals.

Contacting Dell

To contact Dell for sales, technical support, or customer service issues, see www.dell.com/contactdell.

 **NOTE:** Availability varies by country and product, and some services may not be available in your country.

 **NOTE:** If you do not have an active internet connection, you can find contact information on your purchase invoice, packing slip, bill, or Dell product catalog.