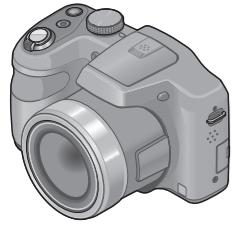


Basic Operating Instructions
Digital Camera

Model No. **DMC-LZ30**

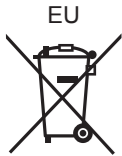


Please read these instructions carefully before using this product, and save this manual for future use.

More detailed instructions on the operation of this camera are contained in "Operating Instructions for advanced features (PDF format)" in the supplied CD-ROM. Install it on your PC to read it.



Web Site: <http://www.panasonic-europe.com>



Pursuant to the directive 2004/108/EC, article 9(2)
Panasonic Testing Centre
Panasonic Marketing Europe GmbH
Winsbergring 15, 22525 Hamburg, Germany

Panasonic Corporation
Web Site: <http://panasonic.net>

© Panasonic Corporation 2013

VQT4V90
M0113KZ0

Dear Customer,
We would like to take this opportunity to thank you for purchasing this Panasonic Digital Camera. Please read these Operating Instructions carefully and keep them handy for future reference. Please note that the actual controls and components, menu items, etc. of your Digital Camera may look somewhat different from those shown in the illustrations in these Operating Instructions.

Carefully observe copyright laws.
• Recording of pre-recorded tapes or discs or other published or broadcast material for purposes other than your own private use may infringe copyright laws. Even for the purpose of private use, recording of certain material may be restricted.

Information for Your Safety

WARNING:

- To reduce the risk of fire, electric shock or product damage,
- Do not expose this unit to rain, moisture, dripping or splashing.
- Use only the recommended accessories.
- Do not remove covers.
- Do not repair this unit by yourself. Refer servicing to qualified service personnel.

About the batteries

CAUTION

- Danger of explosion if battery is incorrectly replaced. Replace only with the type recommended by the manufacturer.
- When disposing the batteries, please contact your local authorities or dealer and ask for the correct method of disposal.

- Do not heat or expose to flame.
- Do not leave the battery(ies) in a car exposed to direct sunlight for a long period of time with doors and windows closed.

■ Cautions for Use

- Do not use any other AV cables except the supplied one.
- Do not use any other USB connection cables except the supplied one.

Keep this unit as far away as possible from electromagnetic equipment (such as microwave ovens, TVs, video games etc.).

- If you use this unit on top of or near a TV, the pictures and/or sound on this unit may be disrupted by electromagnetic wave radiation.
- Do not use this unit near cell phones because doing so may result in noise adversely affecting the pictures and/or sound.
- Recorded data may be damaged, or pictures may be distorted, by strong magnetic fields created by speakers or large motors.
- Electromagnetic wave radiation generated by microprocessors may adversely affect this unit, disturbing the pictures and/or sound.
- If this unit is adversely affected by electromagnetic equipment and stops functioning properly, turn this unit off and remove the battery. Then reinsert the battery and turn this unit on.

Do not use this unit near radio transmitters or high-voltage lines.

- If you record near radio transmitters or high-voltage lines, the recorded pictures and/or sound may be adversely affected.

■ For the United Kingdom and Ireland customers

Customer Communications Centre

- For customers within the U.K.: 0844 844 3899
- For customers within Ireland: 01289 8333
- Monday - Friday 9:00am - 5:00pm (Excluding public holidays).
- Or go on line through our Internet Accessory ordering application at www.pas-europe.com.
- For further support on your product, please visit our website: www.panasonic.co.uk

Direct Sales at Panasonic U.K.

- Order accessory and consumable items for your product with ease and confidence by phoning our Customer Communications Centre Monday - Friday 9:00am - 5:00pm (Excluding public holidays).
- Or go on line through our Internet Accessory ordering application at www.pas-europe.com.
- Most major credit and debit cards accepted.
- All enquiries transactions and distribution facilities are provided directly by Panasonic U.K.
- It couldn't be simpler!
- Also available through our Internet is direct shopping for a wide range of finished products. Take a browse on our website for further details.

Information for Users on Collection and Disposal of Old Equipment and used Batteries

These symbols on the products, packaging, and/or accompanying documents mean that used electrical and electronic products and batteries should not be mixed with general household waste.

For proper treatment, recovery and recycling of old products and used batteries, please take them to applicable collection points, in accordance with your national legislation and the Directives 2002/96/EC and 2006/66/EC.

By disposing of these products and batteries correctly, you will help to save valuable resources and prevent any potential negative effects on human health and the environment which could otherwise arise from inappropriate waste handling.

For more information about collection and recycling of old products and batteries, please contact your local municipality, your waste disposal service or the point of sale where you purchased the items.

Penalties may be applicable for incorrect disposal of this waste, in accordance with national legislation.

For business users in the European Union
If you wish to discard electrical and electronic equipment, please contact your dealer or supplier for further information.

[Information on Disposal in other Countries outside the European Union]

These symbols are only valid in the European Union. If you wish to discard these items, please contact your local authorities or dealer and ask for the correct method of disposal.

Note for the battery symbol (bottom two symbol examples):

This symbol might be used in combination with a chemical symbol. In this case it complies with the requirement set by the Directive for the chemical involved.



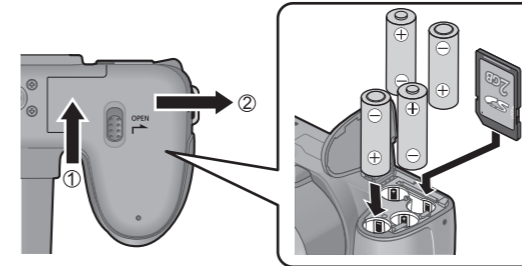
Standard accessories

Check that all the accessories are supplied before using the camera.

- Batteries**
• LR6/AA Alkaline batteries
- USB connection cable**
K1HY08YY0030
- AV cable**
K1HY08YY0029
- Shoulder strap**
VFC4903
- Lens Cap/ Lens Cap String**
VYQ8537
- CD-ROM***
VFF1175

Inserting the card (optional)/the batteries

1 Open the card/battery door



2 Insert the batteries or card

- Make sure that their orientation is correct.

■ Usable batteries

- LR6/AA Alkaline batteries
- HR6/AA Rechargeable Ni-MH (nickel metal hydride) batteries
- Do not use batteries other than those listed above.

■ Recording capacity guidelines

	Supplied batteries or optional Panasonic alkaline batteries	Fully-charged Panasonic Ni-MH batteries (optional, when the battery capacity is 1900 mAh)
Number of recordable pictures	Approx. 380 pictures	Approx. 540 pictures
Recording time	Approx. 190 min.	Approx. 270 min.
Playback time	Approx. 430 min.	Approx. 560 min.

Please note that the performance of alkaline batteries significantly decreases in low temperature conditions.

- Recording conditions by CIPA standard
- Keep the Memory Card out of reach of children to prevent swallowing.

Specifications Specifications are subject to change without notice.

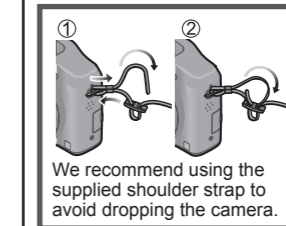
Power Source	DC 6 V LR6/AA Alkaline batteries (4) DC 4.8 V HR6/AA Rechargeable Ni-MH (nickel metal hydride) batteries (4)
Power Consumption	When recording: 1.5 W When playing back: 1.0 W
Camera effective pixels	16,100,000 pixels
Image sensor	1/2.3" CCD, total pixel number 16,400,000 pixels Primary colour filter
Lens	Optical 35× zoom f=4.5 mm to 157.5 mm (35 mm film camera equivalent: 25 mm to 875 mm)/ F3.0 (Max. Wide) to F5.9 (Max. Tele)
Image Stabiliser	Optical method (Digital method is used when recording motion pictures.)
Focus range	P / M: 30 cm (0.98 feet) (Max. Wide) / 2 m (6.6 feet) (Max. Tele) to ∞ Macro / Intelligent Auto / Motion picture: 1 cm (0.033 feet) (Max. Wide) / 1.5 m (4.9 feet) (Max. Tele) to ∞
Shutter system	Electronic shutter + Mechanical shutter
Shutter speed	15 seconds to 1/2000th of a second
Exposure (AE)	Programme AE (P) / Manual exposure (M) Exposure Compensation (1/3 EV Step, -3 EV to +3 EV)
Metering Mode	[Multi Metering] / [Center Weighted] / [Spot]

- Consult the dealer or your nearest Service Centre if you lose the supplied accessories. (You can purchase the accessories separately.)

- * The software compatible with your PC will be installed.
– PHOTOfunSTUDIO 9.0 LE (Windows XP/Vista/7/8)
– LoLoScope 30 day full trial version (Windows XP/Vista/7/8)
(This will only install a shortcut to the trial version download site.)

Names and Functions of Main Parts

The clock is not set when the camera is shipped. Set the date and time before using the camera.



■ Taking pictures

1 Camera [ON/OFF] button
Use this to turn the camera on and off.

2 Shutter button
(still pictures)
↓ to focus
↓ to record

3 Motion picture button
(motion pictures)
↓ to start/end recording

4 Mode dial
Use this to select the recording mode.

5 Flash

6 Zoom lever

7 Microphone

8 Speaker
• Do not cover the speaker with your fingers.

■ Viewing your pictures

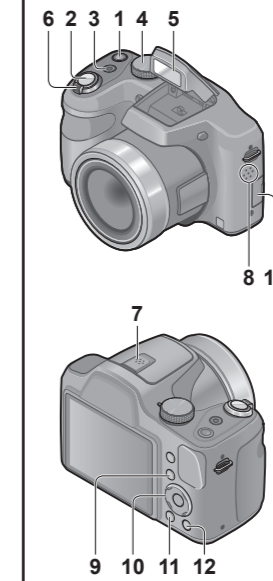
9 Playback button
① Press the Playback button
② Press ◀▶ to select the picture
• Press [] to delete the displayed picture.

10 Cursor button

11 [DISP.] button

12 [Q.MENU] / [] (Delete) / [] (Cancel) button

13 [AV OUT/DIGITAL] socket



LCD monitor	3.0" TFT LCD (4:3) (Approx. 460,800 dots) (field of view ratio about 100%)
Flash	Flash range: (ISO AUTO) Approx. 0.6 m (2.0 feet) to 10 m (33 feet) (Max. Wide)
Microphone/ Speaker	Monaural
Recording media	Built-in Memory (Approx. 100 MB) / SD Memory Card / SDHC Memory Card / SDXC Memory Card
Recording file format	JPEG (based on Design rule for Camera File system, based on Exif 2.3 standard) (still picture) QuickTime Motion JPEG (motion pictures with audio)
Interface	Digital USB 2.0 (High Speed) Data from the PC can not be written to the camera using the USB connection cable. Analogue video NTSC / PAL Composite (Switched by menu) Audio Audio line output (Monaural)
Terminal	AV OUT/DIGITAL: Dedicated jack (8 pin)
Dimensions	Approx. 123.8 mm (W) × 83.7 mm (H) × 91.4 mm (D) [4.87" (W) × 3.30" (H) × 3.60" (D)] (excluding the projection part)
Mass	With card and batteries: Approx. 558 g (1.23 lb) Excluding card and batteries: Approx. 465 g (1.03 lb)
Operating temperature	0 °C to 40 °C (32 °F to 104 °F) (Operating humidity: 10%RH to 80%RH)