

# Liebert® IntelliSlot® Web Card

## Quick Start Guide

### 1 INSTALL

- Locate the Liebert IntelliSlot option bay on your Liebert equipment—You might need to remove a plastic cover.
- Insert the card into the Liebert IntelliSlot bay.
- Secure the card with the supplied screws.
- Connect an Ethernet cable.

**DHCP:** The card ships with DHCP service enabled. The MAC address is printed on a sticker affixed to the top of the card.

**OR**

**Static IP:** To assign a static IP address, use the Service Terminal to configure the card. Proceed to Steps 2 & 3.



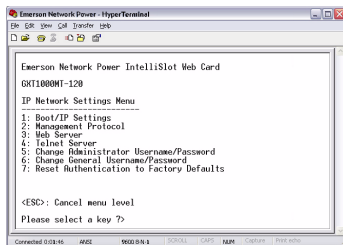
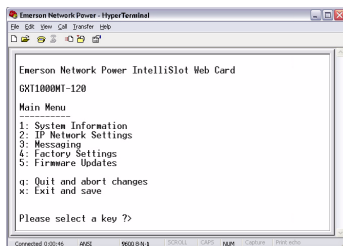
### 2 CONNECT THE CABLE

- Connect a configuration cable (null modem) to the DB-9 port on the card and to a COM port on your PC. The configuration cable is available separately from Emerson (P/N LIEBNULL).

### 3 CONFIGURE THE CARD

- Use terminal emulation software, such as HyperTerminal™, to open a direct connection to the card.

Baud Rate:	9600
Data Bits:	8
Parity:	None
Stop Bits:	1
Flow Control:	None



- Press **Enter** for the Main Menu, above right.
- Select option **2** and follow the instructions to enter an IP ADDRESS, NETMASK and GATEWAY.
- Press **Esc** to return to the Main Menu.
- Enter **X** to save your changes and reboot the card.



#### NOTE

When installing the card in a Liebert NX™, configure the communication port of the Liebert NX to 2400 baud. Refer to the Liebert NX user manual for instructions.

## User Manual

This guide is designed to give you the information you need to install and configure the Liebert IntelliSlot Web Card. A full user manual, SL-52615, is available online at [www.liebert.com](http://www.liebert.com). Emerson Network Power highly recommends that new users consult the user manual.

## Web Support

The Liebert IntelliSlot Web Card delivers Web management and control to Liebert equipment. All users on your network will be able to view status information. Control and configuration capabilities are protected by a username and password combination. The default username is "Liebert" and the default password is also "Liebert." You can change the password from the Web or from the service terminal.

**NOTE:** Change the username and password today to prevent unauthorized access.

## SNMP Support

The Liebert IntelliSlot Web Card enables SNMP management of Liebert equipment.

To integrate the card into your SNMP implementation, you will need to compile the Liebert Global Products MIB on your network management station (NMS).

The Liebert Global Products MIB, which supports both Windows and Unix file formats, is included in this package on CD-ROM or may be downloaded at [www.liebert.com](http://www.liebert.com).

## Liebert Nform™ Support

Utilizing the SNMP and Web technologies built into each Liebert IntelliSlot Web card, Liebert Nform will centrally manage alarm notifications to provide you with an easy interface to access critical system information.

A downloadable edition is available online at [nform.liebert.com](http://nform.liebert.com).

## Liebert MultiLink™ Support

The Liebert IntelliSlot Web Card installed in a UPS may be used with Liebert MultiLink software, providing unattended, graceful operating system shutdown. The card can be monitored by Liebert MultiLink over a network, eliminating the need for serial cables.

Downloadable versions of Liebert MultiLink and product details are available online at [multilink.liebert.com](http://multilink.liebert.com).

---

## Locations

### United States

1050 Dearborn Drive  
P.O. Box 29186  
Columbus, OH 43229

### Europe

Via Leonardo Da Vinci 8  
Zona Industriale Tognana  
35028 Piove Di Sacco (PD) Italy  
+39 049 9719 111  
Fax: +39 049 5841 257

### Asia

7/F Dah Sing Financial Centre  
108 Gloucester Road, Wanchai  
Hong Kong  
852 2572 2201  
Fax: 852 2519 9210

## Technical Support/Service

### Web Site

[www.liebert.com](http://www.liebert.com)

### Monitoring

800-222-5877

[Liebert.monitoring@emerson.com](mailto:Liebert.monitoring@emerson.com)

Outside the US: 614-841-6755

© 2008 Liebert Corporation

All rights reserved throughout the world.  
Specifications subject to change without notice.

© Liebert is a registered trademark of Liebert Corporation. All names referred to are trademarks or registered trademarks of their respective owners.



**EMERSON**  
Network Power