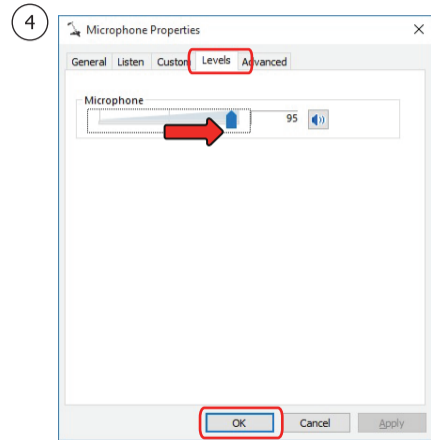
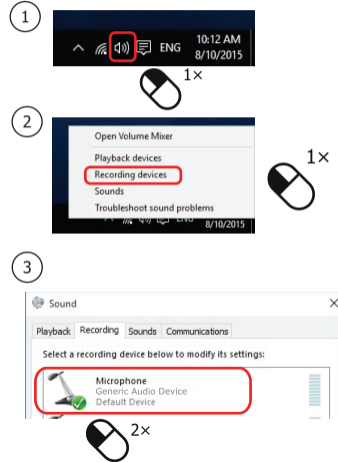
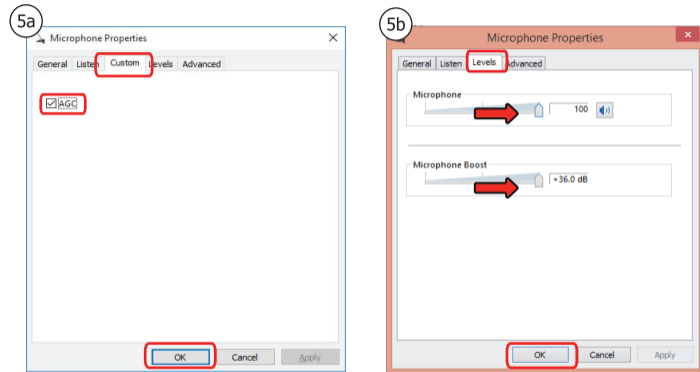


## 4. Installation - Windows 10/8/7



## 5. Installation - Windows 10/8/7



### FAQ

Frequently asked questions

<http://www.trust.com/21661/faq>

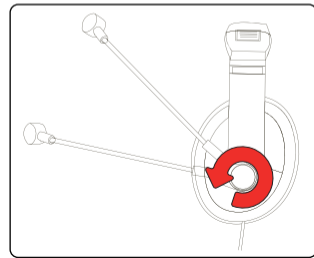
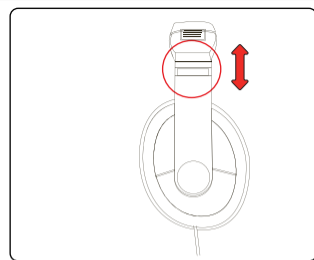
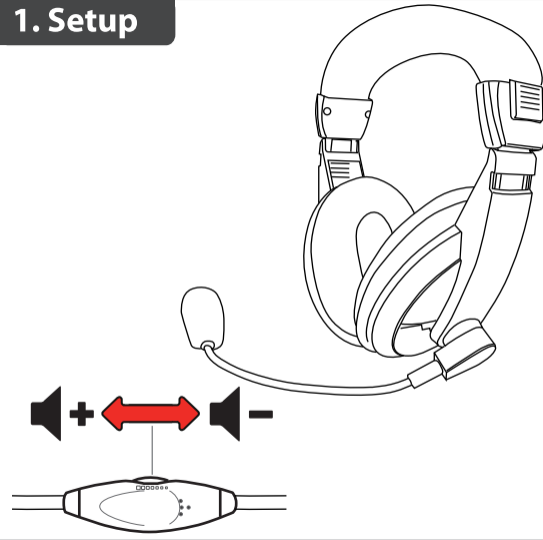
**Trust**

**HEADSET**  
for PC & laptop

**Quick Installation Guide**

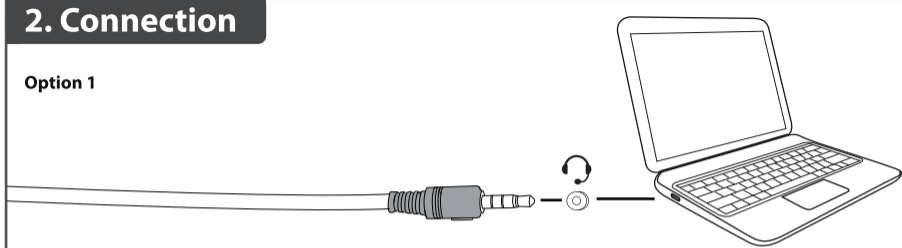


# 1. Setup

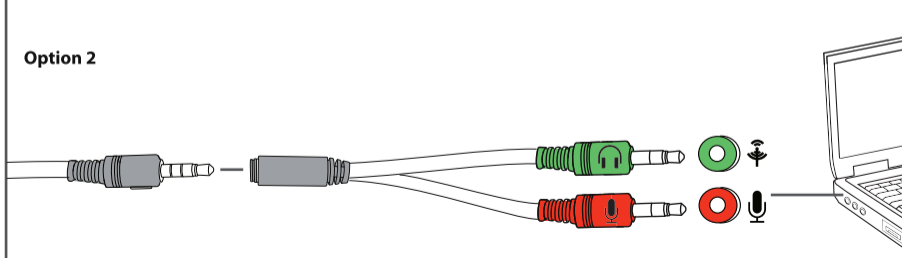


# 2. Connection

Option 1

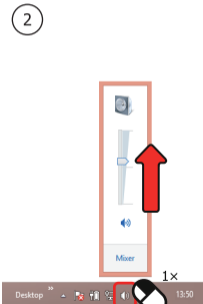
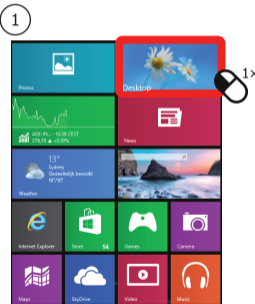


Option 2



# 3. Installation - Windows 10/8/7

Windows 8



Windows 10/7

