



# Jaco Drawer System - Cabinet, Single 3" Drawer, Non Locking

Part Number: 71-0254

Quote Description: CABINET, SINGLE 3" DRW, NO-LOCK

Product Group: HC-Options - Drawers

Minimum Order Qty: 1

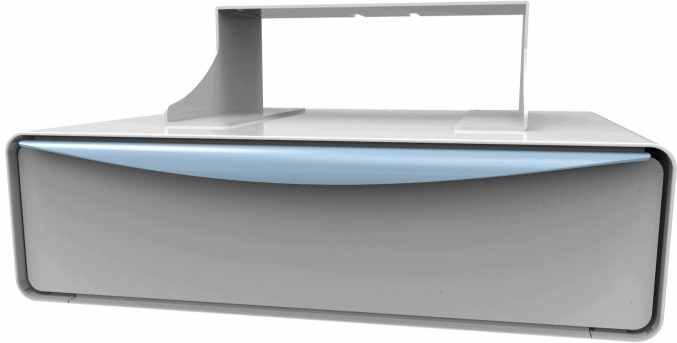
Weight: 8.00 LB

Length: 14.00"

Width: 15.50"

Height: 8.00"

Warranty: 7 Year Structural; 3 Year OEM



### Product Description:

Add additional storage to your Jaco Cart with our configurable drawer system. Choose from 3 inch or 7 inch drawers with a variety of locking mechanisms, storage compartments, or removable bins.

### Extended Specifications:

- Material: Aluminum
- Max Weight Supported: 2 lbs per drawer

### Product Compatibility:

100: No	200: Yes	310: Yes	510: No	J1-10: No	WS-14: No
105: No	210: Yes	320: Yes	510-L250: No	J1-10-L250: No	WS-25: No
160: No	220: Yes		510-L500: No	J1-10-L500: No	
	225: Yes				
			520: No	J1-20: No	WA-40: No
			520-L250: No	J1-20-L250: No	WA-60: No
			520-L500: No	J1-20-L500: No	WA-80: No

### Additional Compatibility Notes:

Add 51-4197, Weight Plate Kit for 200 & 210 Carts w/any Drawer





# Jaco Drawer System - Cabinet, Single 3" Drawer, Non-Lock

Part Number: 71-0252

Quote Description: CABINET, SINGLE 3" DRW, NO-LOCK

Product Group: HC-Options - Drawers

Minimum Order Qty: 1

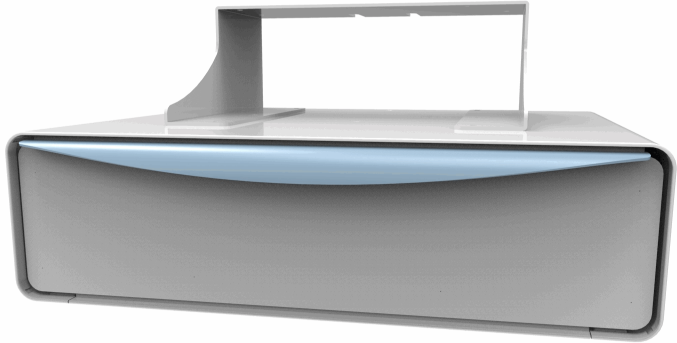
Weight: 8.00 LB

Length: 14.00"

Width: 15.50"

Height: 7.00"

Warranty: 7 Year Structural; 3 Year OEM



### Product Description:

Add additional storage to your Jaco Cart with our configurable drawer system. Choose from 3 inch or 7 inch drawers with a variety of locking mechanisms, storage compartments, or removable bins.

### Extended Specifications:

- Material: Aluminum
- Max Weight Supported: 2 lbs per drawer

### Product Compatibility:

100: No	200: No	310: No	510: Yes	J1-10: No	WS-14: No
105: No	210: No	320: No	510-L250: Yes	J1-10-L250: No	WS-25: No
160: No	220: No		510-L500: Yes	J1-10-L500: No	
	225: No				
			520: Yes	J1-20: No	WA-40: No
			520-L250: Yes	J1-20-L250: No	WA-60: No
			520-L500: Yes	J1-20-L500: No	WA-80: No

