

Instant Film  
**instax mini**

There are so many film border designs to choose from!



**Specifications**

Film	FUJIFILM instax mini instant film
Photo Picture Size	62 mm x 46 mm
Lens	2 components, 2 elements, f = 60 mm, 1:12.7
Viewfinder	Real image finder, 0.37x, with target spot
Shooting Range	0.3 m and beyond (use selfie mode for 0.3 m to 0.5 m)
Shutter	Programmed electronic shutter 1/2 to 1/250 sec. Slow synchro for low light
Exposure Control	Automatic, Lv 5.0 to 14.5 (ISO 800)
Film Ejection	Automatic
Film Developing Time	Approx. 90 seconds (varies depending on the ambient temperature)
Flash	Constant firing flash (automatic light adjustment), recycle time: 6.5 seconds or less (when using new batteries), effective flash range: 0.3 to 2.7 m
Power Supply	Two AA-size alkaline batteries (LR6), capacity: approx. 10 instax mini film packs of 10 exposures each
Auto Power Off Time	After 5 minutes
Other	Includes film counter and film pack confirmation window
Dimensions	107.6 mm x 121.2 mm x 67.3 mm
Weight	293 g (without batteries, strap, and film)

- The instax prints depicted are for illustrative purposes only.
- Specifications are subject to change without notice.
- Due to the nature of the catalog's printing, colors may appear slightly different from the actual products.

**Accessories (sold separately)**

**Camera Cases**



**Albums**



instax.com



instax mini 11  
special website

**FUJIFILM**

FUJIFILM Corporation  
7-3, AKASAKA 9-CHOME, MINATO-KU,  
TOKYO 107-0052, JAPAN

Ref. No. RB-2001E(SK\*20\*2•F1079) ©2020 FUJIFILM Corporation

**FUJIFILM**  
Value from Innovation

**instax**

More  
clarity



More  
style



More  
compact



More  
night &  
day



Now  
even more  
ways to give.

The new  
**instax mini 11**  
don't just take, give.

More  
simple  
selfies





# instax mini 11

Instant Camera

BLUSH PINK

ICE WHITE

SKY BLUE

LILAC PURPLE

CHARCOAL GRAY

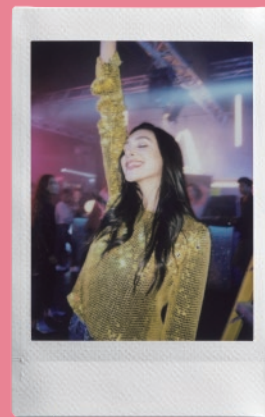


## Now It's Easy to Get Bright Photos Anywhere!

The high-performance flash automatically calculates surrounding brightness and adjusts shutter speed accordingly — no need for any special settings.

### other instax mini cameras

The light of the flash does not reach the background, resulting in a dark-looking photo.



Brighter Backgrounds

### instax mini 11

mini 11 captures bright backgrounds and bright subjects even in dark scenes.



## Selfies & Close-Ups Never Looked Better!

Simply pull out the lens to instantly switch to Selfie Mode!



1



2

When you see the "SELFIE ON" mark, it's on Selfie Mode!

SELFIE ON



You can check your framing with the mirror next to the lens.



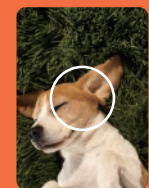
## Capture a perfect Close-Up!

Use Selfie Mode to shoot a subject 30 to 50cm away so you can get a clear close-up shot everytime.

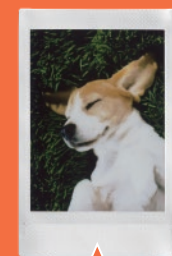
There's a slight shift between the viewfinder and the actual photo during close-ups. Here's a tip: Aim just a little to the right of your subject for best results.



Close-up range 30 to 50cm



Area seen in viewfinder



Actual photo

The instax prints depicted are for illustrative purposes only.



## Customize Your Camera

Two shutter button accessories and a strap are included.

### Shutter Button

GLOW

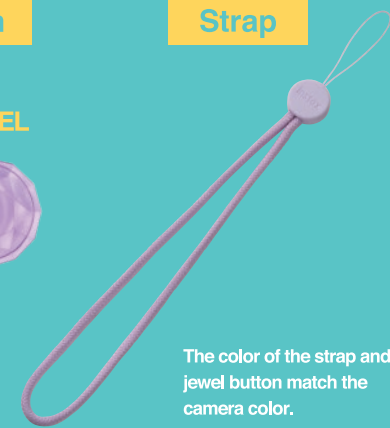


Glow in the dark!

JEWEL



### Strap



The color of the strap and jewel button match the camera color.

