

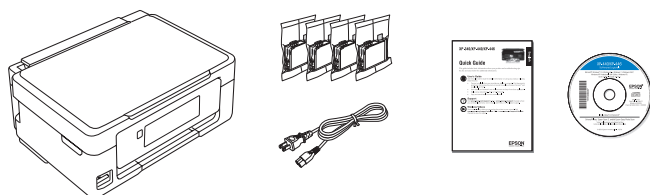
XP-340/XP-440/XP-446

Start Here

Read these instructions before using your product.

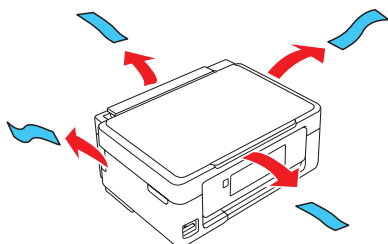
Note for Spanish speakers/Nota para hispanohablantes: Para obtener instrucciones de configuración en español, consulte la *Guía de instalación* en www.epson.com/support/xp340sp, www.epson.com/support/xp440sp o www.epson.com/support/xp446sp (requiere una conexión a Internet).

1 Unpack

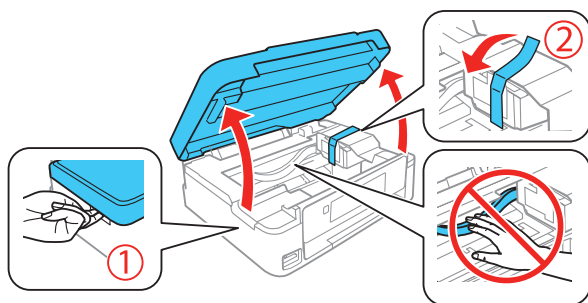


Note: Do not open ink cartridge packages until you are ready to install the ink. Cartridges are vacuum packed to maintain reliability.

- 1 Remove all protective materials from the product.

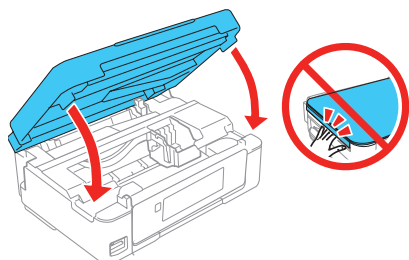


- 2 Lift up the scanner unit and remove all protective materials from inside the product.



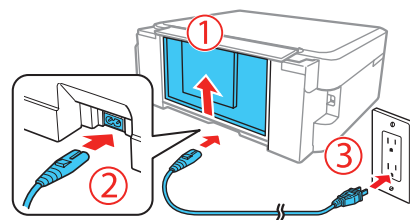
Caution: Do not touch the flat white cable.

- 3 Lower the scanner unit.



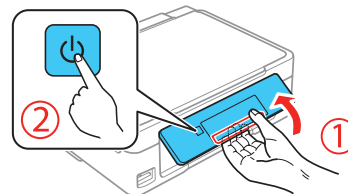
2 Turn on and configure

- 1 Connect the power cord to the back of the product and to an electrical outlet.



Caution: Do not connect to your computer yet.

- 2 Raise the control panel and turn on the product.



Caution: Do not lower the control panel without first squeezing the release bar underneath or you may damage the product.

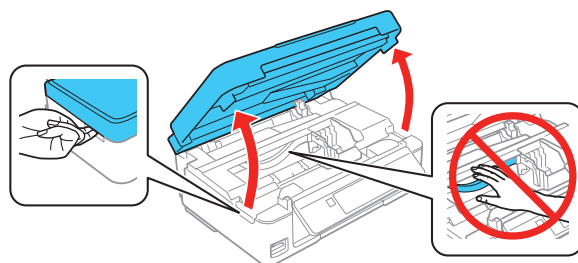
- 3 Press ▲ or ▼ to select your language, then press OK.

Note: You can change the language later using the product's control panel. For more information, see the online *User's Guide*.

3 Install ink cartridges

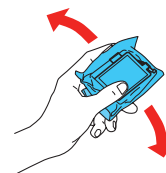
Caution: Keep ink cartridges out of the reach of children and do not drink the ink.

- 1 Lift up the scanner unit.

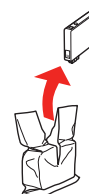


Caution: Do not touch the flat, white cable.

- 2 Gently shake the ink cartridges.



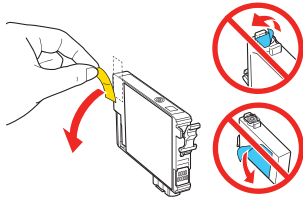
- 3 Unpack the ink cartridges.



413340800

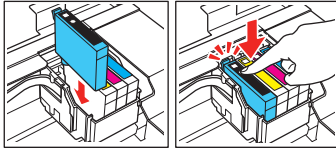
EPSON
EXCEED YOUR VISION


- 4 Remove only the yellow tape from each ink cartridge.

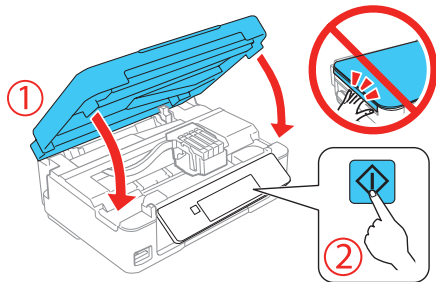


Caution: Do not remove any other labels or seals, or ink will leak. Do not touch the green chip on the cartridge.

- 5 Insert the cartridge in the holder for each color. Press each cartridge down until it clicks. Make sure all cartridges are pushed down into place.



- 6 Lower the scanner unit, then press  to start charging the ink delivery system.



- 7 The printer starts charging the ink. Ink charging takes approximately 4 minutes. When you see a completion message on the printer's LCD screen, charging is complete.

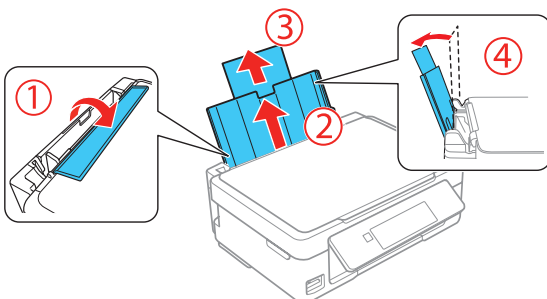
Caution: Don't turn off the printer while it is charging or you'll waste ink.

Note:

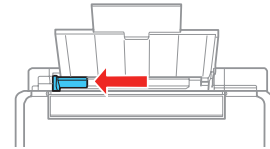
- The printer is designed for use with Epson® cartridges only, not third-party cartridges or ink.
- The cartridges included with the printer are designed for printer setup and not for resale. After some ink is used for charging, the rest is available for printing.

4 Load paper

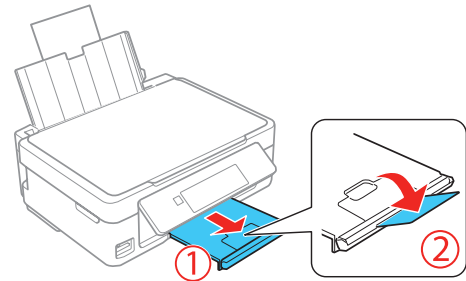
- 1 Make sure the product is done charging ink. Then flip the feeder guard forward, raise the paper support, and tilt it backwards slightly.



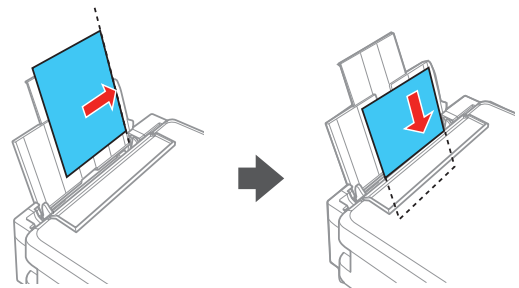
- 2 Slide the edge guide to the left.



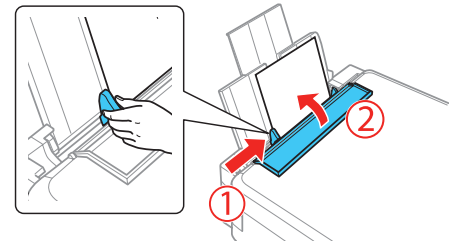
- 3 Slide out the output tray.



- 4 Load paper, glossy or printable side up and short edge first, against the right side of the rear paper feed slot.



- 5 Slide the edge guide against the paper, but not too tightly, and flip the feeder guard back.



Note: Make sure you place the paper against the right side of the rear paper feed slot. Otherwise, the printer cannot detect the paper and the paper setup screen is not displayed on the control panel.

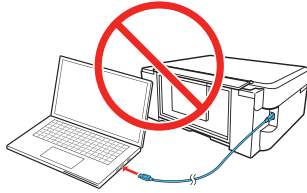
- 6 Check the current paper settings on the control panel. To use these settings, press **OK**. If you want to change the settings, press **▲** or **▼** to select **Change**, then press **OK**. Select the paper size, press **OK**, select the paper type, press **OK**, then press **OK** again to confirm settings.

5 Install software

Note: If your computer does not have a CD/DVD drive or you are using a Mac, an Internet connection is required to obtain the product software.

To print from a Chromebook™, go to www.epson.com/support/gcp (U.S.) or www.epson.ca/support/gcp (Canada) for instructions.

- 1 Make sure the product is **NOT CONNECTED** to your computer.



Windows®: If you see a Found New Hardware screen, click **Cancel** and disconnect the USB cable.

- 2 Insert the product CD or download and run your product's software package. For the latest software, visit www.epson.com/support (U.S.) or www.epson.ca/support (Canada) and search for your product.
- 3 Follow the instructions on the screen to run the setup program.
- 4 When you see the Select Your Connection screen, select one of the following, then continue with the on-screen instructions:
 - **Wireless connection**
In most cases, the software installer automatically attempts to set up your wireless connection. If setup is unsuccessful, you may need to enter your network name (SSID) and password.
 - **Direct USB connection**
Make sure you have the USB cable (not included).

Note: If you see a message on the product's control panel reminding you to set up an Epson Connect™ account, select **No** to turn off the reminders. You can set up an account later from your computer or mobile device. See the "Mobile printing" section for more information.

Mobile printing

Connect wirelessly from your smartphone, tablet, or computer. Print documents and photos from across the room or around the world:

- Print directly from your iPhone, iPad, or iPod touch. Simply connect your printer and device to the same network and tap the action icon to select the print option.
- Use Epson Print Enabler (free from Google Play™) with Android™ devices (v4.4 or later). Then connect your printer and device to the same network and tap the menu icon to select the print option.
- Print remotely with Epson Connect™ and Google Cloud Print™. See your online *User's Guide* for instructions or learn more at www.epson.com/connect (U.S.) or www.epson.ca/connect (Canada).

Any problems?

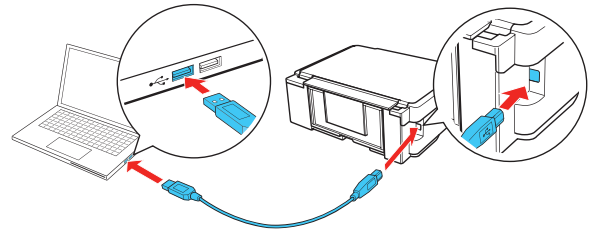
If you experience problems during setup, see below:

Network setup was unsuccessful.

- Make sure you select the right network name (SSID).
- Restart your router (turn it off and then on), then try to connect to it again.
- The printer can only connect to a network that supports 2.4 GHz connections. If your router offers both 2.4 GHz and 5 GHz connections, make sure the 2.4 GHz connection is enabled.
- If you see a firewall alert message, click **Unblock** or **Allow** to let setup continue.
- If your network has security enabled, make sure you enter your network password (WEP key or WPA passphrase) correctly. Be sure to enter your password in the correct case.

Setup is unable to find my printer after connecting it with a USB cable.

Make sure the printer is turned on and that it is securely connected as shown:



There are lines or incorrect colors in my printouts.

Run a nozzle check to see if any of the print head nozzles are clogged. Then clean the print head, if necessary. See the online *User's Guide* for more information.

Any questions?

Quick Guide

Basic information and troubleshooting.

User's Guide

Windows: Click the icon on your desktop or Apps screen to access the online *User's Guide*.

Mac: Click the icon in **Applications/Epson Software/Guide** to access the online *User's Guide*.

If you don't have a User's Guide icon, go to the Epson website, as described below.

Support

Visit www.epson.com/support (U.S.) or www.epson.ca/support (Canada) and search for your product to download drivers, view manuals, get FAQs, or contact Epson.

Call (562) 276-4382 (U.S.) or (905) 709-3839 (Canada), 6 AM to 8 PM, Pacific Time, Monday through Friday, and 7 AM to 4 PM, Pacific Time, Saturday. Days and hours of support are subject to change without notice. Toll or long distance charges may apply.

Recycling

Epson offers a recycling program for end of life hardware and ink cartridges. Please go to www.epson.com/recycle for information on how to return your products for proper disposal.

Need paper and ink?

Ensure peak performance and brilliant results with Genuine Epson Ink and specialty papers, engineered specifically for Epson printers. Find Genuine Epson Ink and specialty papers at www.epson.com (U.S. sales) or www.epson.ca (Canadian sales) and at Epson authorized resellers. Call 800-GO-EPSON (800-463-7766).



DESIGNED *for*
EXCELLENCE™
Epson printers, ink and specialty papers.



DURABrite
Ultra
INK

XP-340/XP-440/XP-446 replacement ink cartridges

Color	Standard-capacity	High-capacity
Black	288	288XL
Cyan	288	288XL
Magenta	288	288XL
Yellow	288	288XL



EPSON and DURABrite are registered trademarks, Epson Connect is a trademark, and EPSON Exceed Your Vision is a registered logomark of Seiko Epson Corporation. Designed for Excellence is a trademark of Epson America, Inc.

Mac is a trademark of Apple Inc., registered in the U.S. and other countries.

Android, Chromebook, and Google Play are trademarks of Google Inc.

General Notice: Other product names used herein are for identification purposes only and may be trademarks of their respective owners. Epson disclaims any and all rights in those marks.

This information is subject to change without notice.

© 2016 Epson America, Inc., 10/16