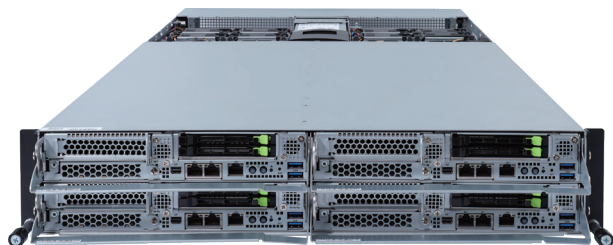
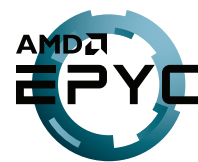


H282-ZC0

High Density Server - DP 2U 4-Node



Features

- Hardware-level root of trust support
- 2U - 4 nodes front access server system
- Dual AMD EPYC™ 7003 series processor family
- 8 x LGA 4094 sockets
- 8-Channel RDIMM/LRDIMM DDR4, 128 x DIMMs
- 8 x 1Gb/s LAN ports
- 4 x Dedicated management ports
- 2 x CMC global management port
- 8 x 2.5" Gen4 NVMe hot-swappable SSD bays
- 8 x M.2 with PCIe Gen4 x4 interface
- 12 x PCIe Gen4 x16 expansion slots
- 4 x OCP 3.0 Gen4 x16 mezzanine slots
- 3000W (240V) 80 PLUS Platinum redundant PSU

Specification

Dimensions	2U 4 Nodes - Front access (W447 x H87.5 x D902 mm)	Front I/O	Total: 8 x USB 3.0, 4 x Mini-DP, 8 x RJ45, 4 x RJ45 MLAN
Motherboard	MZC2-LM0 Rev. 1.0	Rear I/O	2 x CMC global management ports
CPU	AMD EPYC™ 7003 Series processors Dual processors, 7nm, Socket SP3, cTDP up to 240W Up to 64-core, 128 threads per processor Compatible with AMD EPYC™ 7002 Series processors	Backplane I/O	2 x ports per node (SATA 6Gb/s or PCIe Gen4 x4 per port)
Chipset	System on Chip	TPM	1 x TPM header with SPI interface Optional TPM2.0 kit: CTM010
Memory	8-Channel DDR4 memory, total 128 x DIMM slots RDIMM/LRDIMM modules up to 128GB supported 3DS RDIMM/LRDIMM modules up to 256GB supported Memory speed: Up to 3200/2933 MHz	Power Supply	Dual 3000W 80 PLUS Platinum power supply AC Input: 100-240V
LAN	8 x 10GbE BASE-T LAN ports (Intel® X710-AT2) 4 x Dedicated management ports 2 x CMC global management ports	System Management	Aspeed® AST2500 management controller GIGABYTE Management Console (AMI MegaRAC SP-X)
Video	Integrated in Aspeed® AST2500 2D Video Graphic Adapter with PCIe bus interface 1920x1200@60Hz 32bpp, DDR4 SDRAM	OS Compatibility	Windows Server 2016 / 2019 RHEL 8.3 (x64) or later SLES 12 SP5 (x64) / 15 SP2 (x64) or later Ubuntu 18.04.5 LTS (x64) / 20.04 LTS (x64) or later VMware ESXi 6.7 Update3 P03 / 7.0 Update1 or later Citrix Hypervisor 8.2.0 or later
Storage	8 x 2.5" 7mm slim type NVMe/SATA hot-swap HDD/SSD bays	System Fans	8 x 80x80x38mm (16,300rpm)
RAID	N/A	Operating Properties	Operating temperature: 10°C to 35°C Operating humidity: 8-80% (non-condensing) Non-operating temperature: -40°C to 60°C Non-operating humidity: 20%-95% (non-condensing)
Expansion Slots	4 x Low profile half-length PCIe Gen4 x16 slots in front side 8 x Full height half-length PCIe Gen4 x16 slots in rear side 4 x OCP 3.0 mezzanine slots with PCIe Gen4 x16 bandwidth 8 x M.2 slots	Packaging Content	1 x H282-ZC0 8 x CPU heatsinks 1 x Rail kit
Internal I/O	Per node: 2 x M.2 slots, 1 x COM header, 1 x TPM header, 1 x BMC SGPIO header, 1 x JTAG BMC header, 1 x PLD header, 1 x Clear CMOS jumper, 1 x IPMB connector	Reference Numbers	Barebone package: 6NH282ZC0MR-00 Rev. A00 - Motherboard: 9MZC2LM0NR-00 - Rail kit: 25HB2-A86104-K0R - CPU heatsink: 25ST1-423203-A0R/ 25ST1-44320J-A0R - Power Supply: 25EP0-232001-D0S



Learn more about GIGABYTE server solutions, visit www.gigabyte.com/Enterprise

* All specifications are subject to change without notice. Please visit our website for the latest information.

* AMD, and the AMD Arrow logo, AMD EPYC and combinations thereof are trademarks of Advanced Micro Devices, Inc.

* All other brands, logos and names are property of their respective owners.

© 2021 GIGABYTE Technology Co., Ltd. All rights reserved.