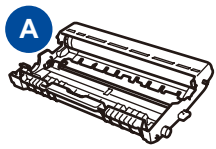


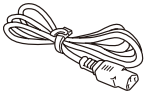


Watch our FAQ Videos for help
with setting up your Brother
machine:
solutions.brother.com/videos.

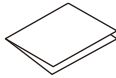
Unpack the machine and check the components



Drum Unit
(Pre-installed)



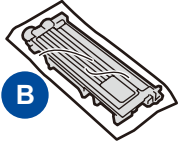
AC Power Cord
(only for certain
models)



Quick Setup Guide



CD-ROM



**Starter Toner
Cartridge**



Telephone Line Cord
(For MFC models)



Product Safety Guide



Basic User's Guide

Read the Product Safety Guide first, then read this Quick Setup Guide for the correct installation procedure.
Manuals in Spanish for this model are available on the enclosed CD-ROM. (USA only)
Manuales en Español para este modelo están disponibles en el CD-ROM incluido. (sólo en Estados Unidos)

NOTE:

- The components included in the box and the AC power plug may differ depending on your country.
- The illustrations in this Quick Setup Guide are based on the MFC-L2700DW.
- You must purchase the correct interface cable for the interface you want to use.

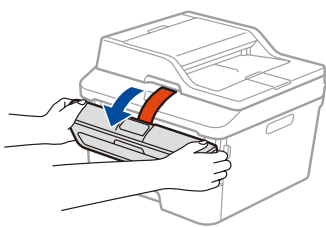
USB cable

We recommend using a USB 2.0 cable (Type A/B) that is no more than 6 feet (2 meters) long.

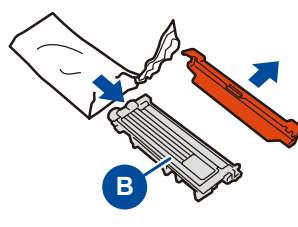
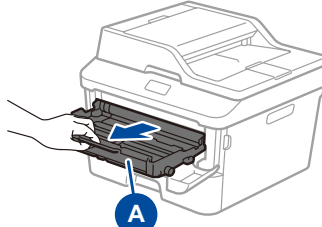
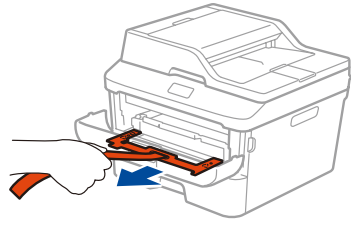
Network cable

Use a straight-through Category 5 (or greater) twisted-pair cable for 10BASE-T or 100BASE-TX Fast Ethernet Network.

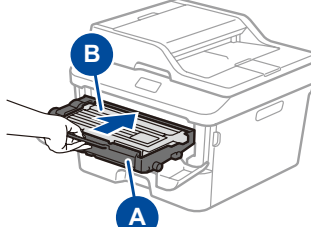
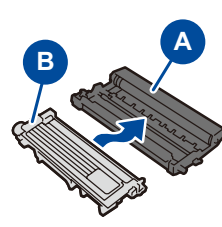
1 Remove the packing materials and install the toner cartridge



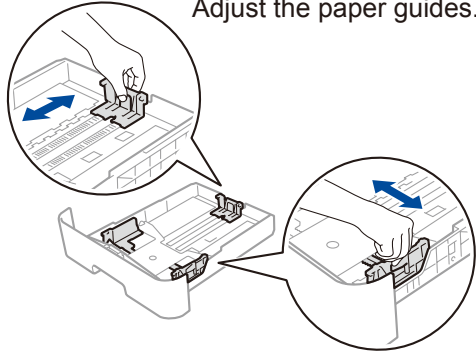
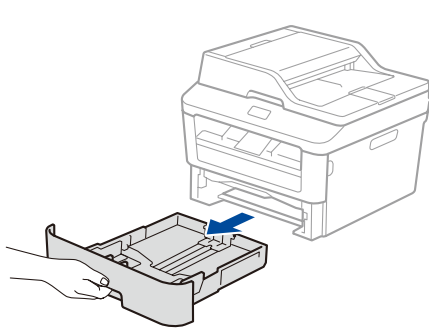
Remove the orange part.



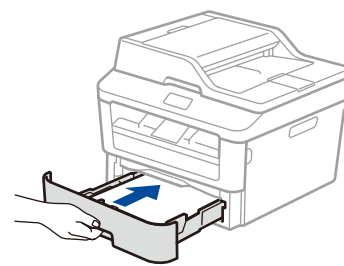
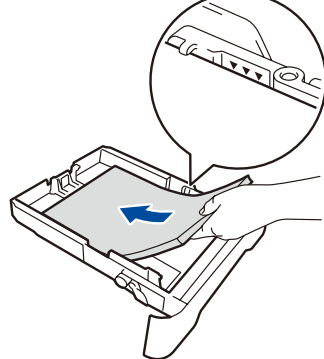
Remove the orange part.



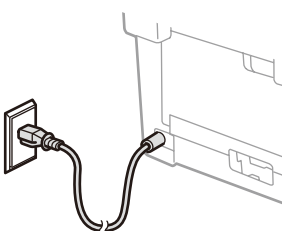
2 Load paper in the paper tray



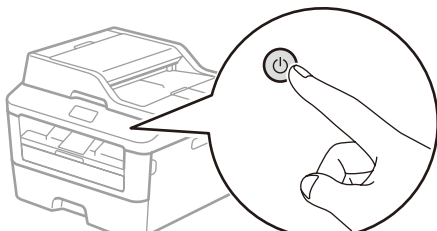
Adjust the paper guides.



3 Connect the power cord and turn on the machine



Back



Front

4 Select your language (if needed)

- (DCP model)
 - Press **Menu**.
 - Press **▲** or **▼** to display **General Setup**, and then press **OK**.
 - Press **▲** or **▼** to display **Local Language**, and then press **OK**.(MFC model) Press **Menu**, **0**, **0**.
- Press **▲** or **▼** to select your language, and then press **OK**.
- Press **Stop/Exit**.

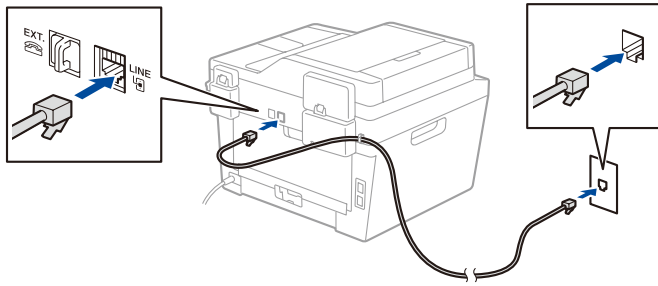
5 Configure the machine for faxing (for MFC models only)

If you do not plan to use the fax feature on this machine, go to step 6.

NOTE:

- To complete fax setup on your machine, see the *Basic User's Guide*.
- Your machine is programmed to automatically receive faxes. To change this default mode, see the *Basic User's Guide*.

A. Connect the telephone line cord



B. Set the date and time

Date

- Press **Menu**, **0**, **1**, **1**.
- Enter the last two digits for the year on the dial pad, and then press **OK**.
- Enter the two digits for the month on the dial pad, and then press **OK**.
- Enter the two digits for the day on the dial pad, and then press **OK**.

Clock Type

- Press **▲** or **▼** to select **12h Clock** or **24h Clock**, and then press **OK**.

Time

- Enter the time using the dial pad, and then press **OK**.
 - 12h Clock only
 - Press **▲** or **▼** to select **AM** or **PM**, and then press **OK**.
- Press **Stop/Exit**.

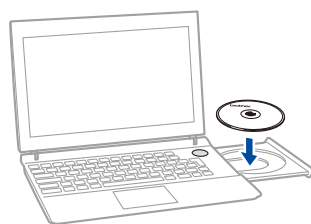
6 Connect the machine to your computer/mobile device

- Windows® PC with a CD-ROM drive, go to step **6A**
- Windows® PC without a CD-ROM drive, go to step **6B**
- Macintosh, go to step **6B**
- Mobile device users with a WPS/AOSS™-supported access point/router, go to step **6C**



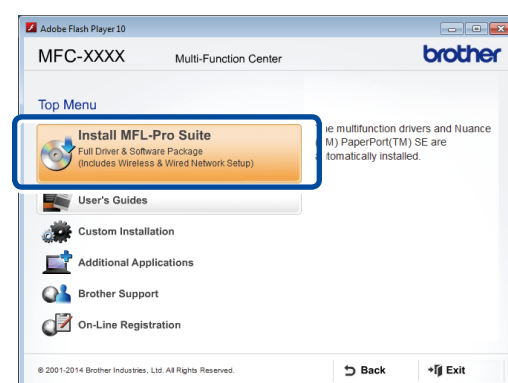


Configuration using the CD-ROM (Windows®)



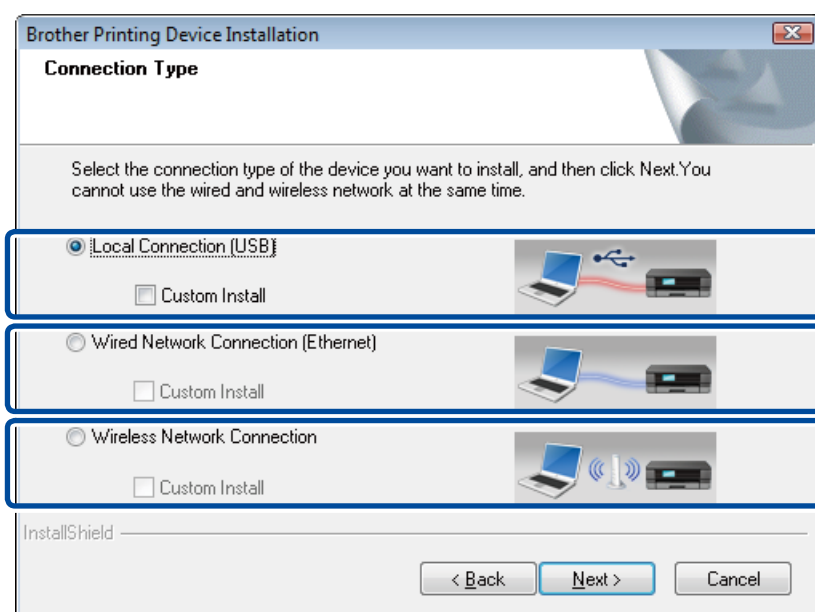
NOTE:

If the Brother screen does not appear automatically, go to **Computer (My Computer)**.
(For Windows® 8: click the (File Explorer) icon on the taskbar, and then go to **Computer**.)
Double-click the CD-ROM icon, and then double-click **start.exe**.



Follow the on-screen instructions until the **Connection Type** screen appears.

Connection Type



For USB Connection

For Wired Network Connection
Connect a network cable first.

For Wireless Network Connection
We recommend preparing a USB cable to use temporarily during the wireless setup.

Follow the on-screen instructions to continue installation.

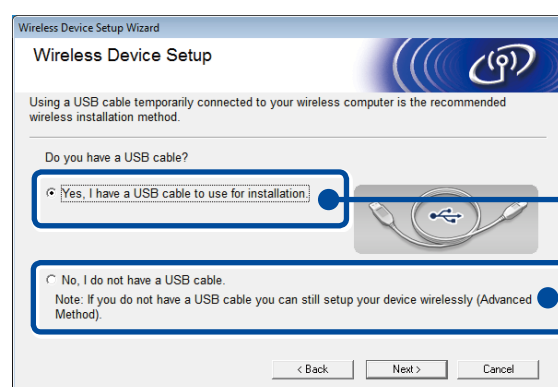
Finish

NOTE:

If connection is unsuccessful, repeat this step.



Wireless Network Connection



[Recommended]

Select this option if you have a USB cable to use temporarily for wireless setup.

Select this option if you do not have a USB cable.

Follow the on-screen instructions to continue installation.

Finish

NOTE:

If connection is unsuccessful, repeat this step.



Configuration without using the CD-ROM (Windows® without CD-ROM drive or Macintosh)

Download the full driver and software package from the Brother Solutions Center.

(For Windows®) solutions.brother.com/windows

(For Macintosh) solutions.brother.com/mac

After you download the driver and software package, follow the on-screen instructions until the **Connection Type** screen appears. Refer to **6A Configuration using the CD-ROM (Windows®)**.

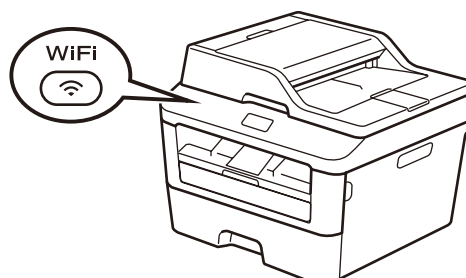


One-push wireless setup for mobile devices

If your wireless LAN access point/router supports automatic wireless (one-push) setup (WPS/AOSS™), you can set up your machine without using a computer.



Press the WPS or AOSS™ button on your wireless LAN access point/router.

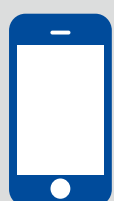


Press the **WiFi** button on your machine.

Wireless setup is now complete.

NOTE:

Before you can use your machine with your mobile device, download "Brother iPrint&Scan."



Print and scan using your mobile device

Download "Brother iPrint&Scan" to start using your machine with mobile devices.



solutions.brother.com/ips