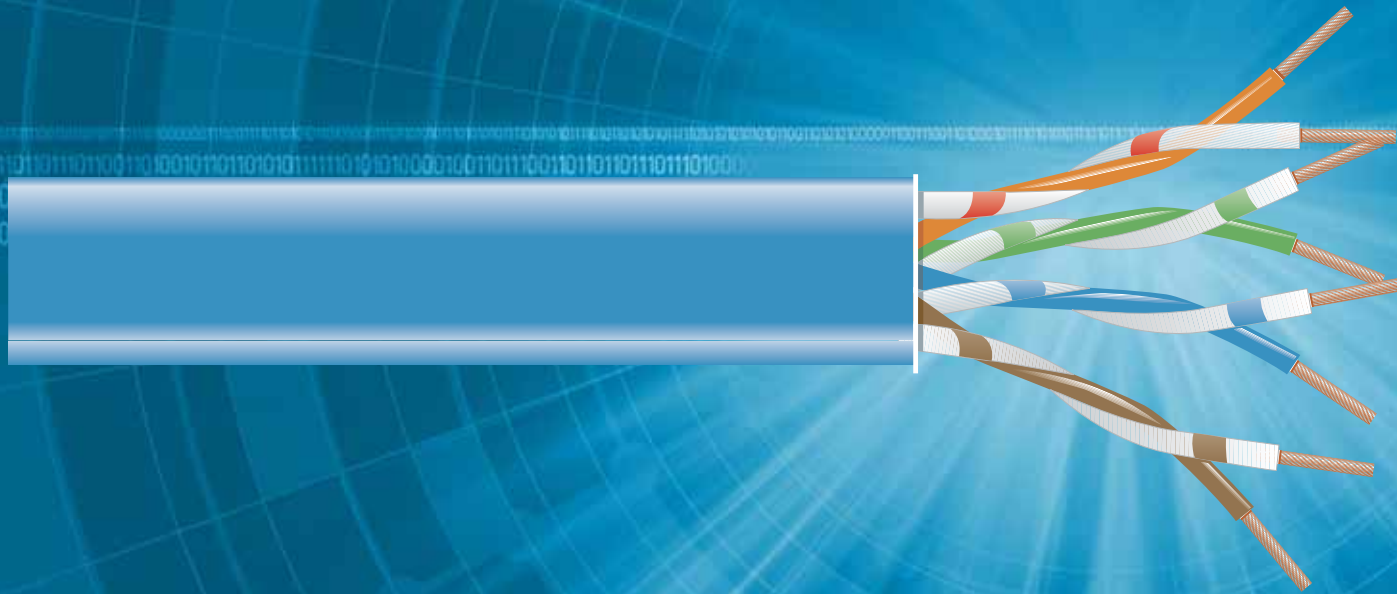


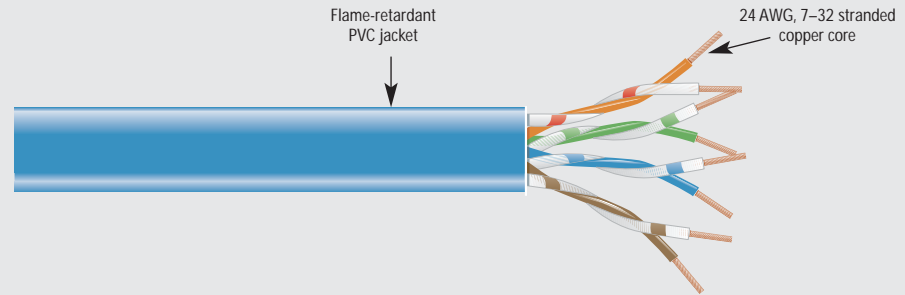
## GigaTrue 550 CAT6, 550-MHZ Stranded Bulk Cables



**Use these CAT6 stranded cables as patch cables  
or for high-speed, short runs.**

## FEATURES

- Exceed CAT6 cable specifications.
- Complies with ISO/IEC 11801 Class E requirements.
- Stranded construction protects the cables from breaking.
- Available in 3 lengths and 11 colors.
- Conveniently packaged in a pull box that enables you to easily pull out the cable.
- Use for full broadband and baseband video.



## OVERVIEW

For high-speed applications such as 1000BASE-T, 100BASE-TX, 100BASE-VG, 155-Mbps ATM, and 100-Mbps FDDI/CDDI, you need strong, break-resistant cable connections.

Because a group of thin wires twisted together is more flexible than a larger-diameter solid wire, stranded cable is less susceptible to breaking than solid cable is. This makes stranded cable ideal for use in short cable runs, or as a patch cable that you are regularly plugging in or unplugging.

BLACK BOX® GigaTrue 550 CAT6, 550-MHz Stranded Bulk Cables give you superior quality links. They're constructed of 24 AWG, 7-32 stranded copper with a flame-retardant PVC jacket.

These top-of-the-line TIA/EIA-568-B.2-1 compliant and ISO/IEC 11801 Class E compliant CAT6 cables use all four wire pairs to transfer the data signal from one device to another in your network. They operate in full-duplex mode to accommodate full broadband and baseband video. GigaTrue 550 CAT6 Cables work well with your high-speed applications. They also give you better transmission by meeting balance requirements (LCL/LCTL).

GigaTrue 550 CAT6 Cables exceed a variety of TIA/EIA Category 6 channel performance standards at selected frequencies including NEXT, PS-NEXT, Attenuation, EL-FEXT, PS-ELFEXT, and Return Loss. The cables also meet the latest ISO/IEC 11801 Class E standards.

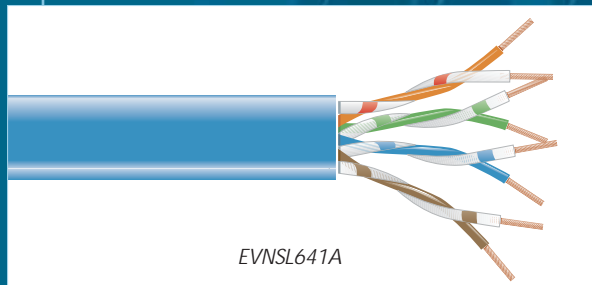
GigaTrue 550 CAT6 Cables are available in 250-, 500-, and 1000-foot (76.2-, 152.4-, and 304.8-m) lengths. Packaged in a pull box for convenient dispensing and measuring, the cables can be cut to custom lengths to suit your application.

## Choose from as many as 11 colors!



## TECH SPECS

**Attenuation (Maximum)** — 23.6 dB/100 m (328 ft.) @ 100 MHz; 34.6 dB/100 m (328 ft.) @ 200 MHz; 39.1 dB/100 m (328 ft.) @ 250 MHz  
**Conductor Gauge** — 24 AWG, 7-32 stranded copper  
**Delay Skew (Maximum)** — 25 ns/100 m (328 ft.)  
**EL-FEXT (Minimum)** — Cable: > 27.8 dB @ 100 MHz; Connector: > 43.1 dB @ 100 MHz; Channel: > 23.3 dB @ 100 MHz  
**Frequency** — Up to 550 MHz  
**Impedance** — 100 ±15 ohms @ 100 MHz; 100 ±22 ohms @ 100-550 MHz  
**Mutual Capacitance** — 56 pF/m (nominal)  
**NEXT (Minimum)** — 45 dB/100 m (328 ft.) @ 100 MHz; 41 dB/100 m (328 ft.) @ 200 MHz; 39 dB/100 m (328 ft.) @ 250 MHz  
**PS-ACR (Typical)** — 32 dB @ 100 MHz  
**PS-ELFEXT** — > 24.8 dB @ 100 MHz  
**PS-NEXT (Minimum)** — 43 dB/100 m (328 ft.) @ 100 MHz; 39 dB/100 m (328 ft.) @ 200 MHz; 37 dB/100 m (328 ft.) @ 250 MHz  
**Resistance (Maximum)** — 9.09 ohms/100 m (328 ft.)  
**Return Loss (Minimum)** — 22.5 dB/100 m (328 ft.) @ 100 MHz; 21 dB/100 m (328 ft.) @ 200 MHz; 20.5 dB/100 m (328 ft.) @ 250 MHz  
**Standards** — TIA/EIA-568-B.2-1 Category 6, ISO/IEC 11801 Class E



EVNSL641A

Item	Code
GigaTrue® 550 CAT6, 550-MHz Stranded Bulk Cables 4-Pair, PVC, 24 AWG	
250-ft. (76.2-m)	
Gray	EVNSL640A-0250
Blue	EVNSL641A-0250
Green	EVNSL642A-0250
Red	EVNSL643A-0250
Yellow	EVNSL644A-0250
Beige	EVNSL645A-0250
Pink	EVNSL646A-0250
Black	EVNSL647A-0250
Purple	EVNSL648A-0250
Orange	EVNSL649A-0250
White	EVNSL650A-0250
500-ft. (152.4-m)	
Gray	EVNSL640A-0500
Blue	EVNSL641A-0500
Green	EVNSL642A-0500
Red	EVNSL643A-0500
Yellow	EVNSL644A-0500
Beige	EVNSL645A-0500
Pink	EVNSL646A-0500
Black	EVNSL647A-0500
Purple	EVNSL648A-0500
Orange	EVNSL649A-0500
White	EVNSL650A-0500

Item	Code
GigaTrue 550 CAT6, 550-MHz Stranded Bulk Cables 4-Pair, PVC, 24 AWG (Continued)	
1000-ft. (304.8-m)	
Gray	EVNSL640A-1000
Blue	EVNSL641A-1000
Green	EVNSL642A-1000
Red	EVNSL643A-1000
Yellow	EVNSL644A-1000
Beige	EVNSL645A-1000
Pink	EVNSL646A-1000
Black	EVNSL647A-1000
Purple	EVNSL648A-1000
Orange	EVNSL649A-1000
White	EVNSL650A-1000

## Why Buy From Black Box? Exceptional Value. Exceptional Tech Support. Period.

### Recognize any of these situations?

- You wait more than 30 minutes to get through to a vendor's tech support.
- The so-called "tech" can't help you or gives you the wrong answer.
- You don't have a purchase order number and the tech refuses to help you.
- It's 9 p. m. and you need help, but your vendor's tech support line is closed.

According to a survey by Data Communications magazine, 90% of network managers surveyed say that getting the technical support they need is extremely important when choosing a vendor. But even though network managers pay anywhere from 10 to 20% of their overall purchase price for a basic service and support contract, the technical support and service they receive falls far short of their expectations—and certainly isn't worth what they paid.

At Black Box, we guarantee the best value and the best support. You can even consult our Technical Support Experts before you buy if you need help selecting just the right component for your application.

Don't waste time and money—call Black Box today.