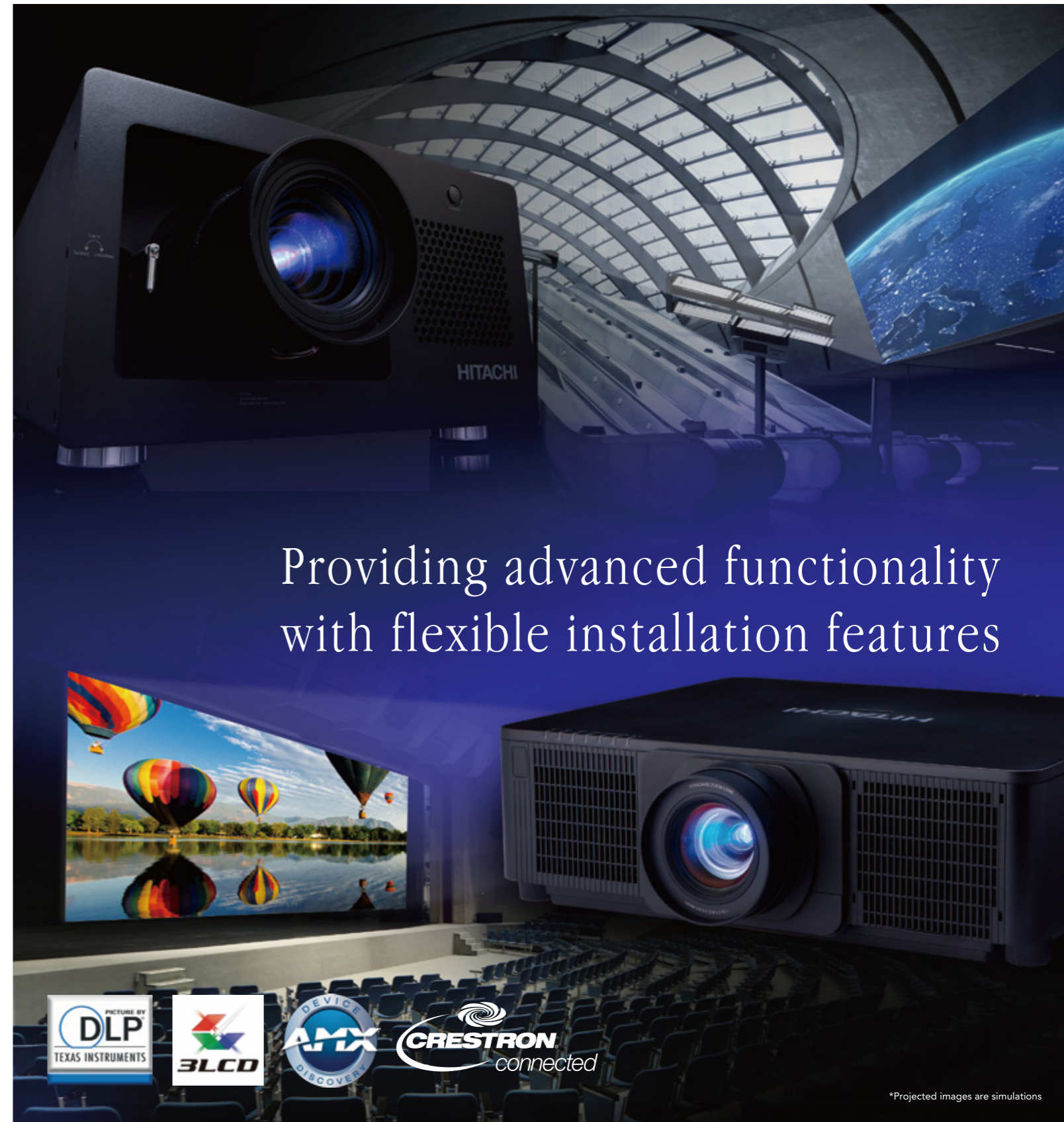


Projectors Installation series



Providing advanced functionality
with flexible installation features

HITACHI

Hitachi America, Ltd., Digital Media Division
2420 Fenton Street, Suite 200 Chula Vista, CA 91914, U.S.A. and Canada Tel: +1-800-225-1741 www.hitachi-america.us/digitalmedia

Hitachi Home Electronics Asia (S) Pte. Ltd.
438A Alexandra Road #01-01/02/03, Alexandra Technopark, 119967, Singapore Tel: +65-6536-2520 www.hitachiconsumer.com.sg

Hitachi Sales (Malaysia) Sdn. Bhd.
Lot 12, Jalan Kemajuan, Bangi Industrial Estate, 43650 Bandar Baru Bangi, Selangor Darul Ehsan, Malaysia Tel: +60-3-8911-2670 www.hitachiconsumer.com.my

Hitachi Sales (Thailand), Ltd.
994, 996 Soi Thonglor, Sukhumvit 55 Road, Klongtonnua, Vadhana Bangkok 10110, Thailand Tel: +66-2335-5455 www.hitachi-th.com

Hitachi (Hong Kong), Ltd.
18th Floor, Ever Gain Centre, 28 On Muk Street, Shatin, N.T., Hong Kong Tel: +852-2113-8883 www.hitachi-hk.com.hk

Hitachi Sales Corp. of Taiwan
2nd Floor, No.65, Nanking East Road, Section 3, Taipei 104, Taiwan Tel: +886-2-2516-0500 www.hsct.com.tw

Hitachi Australia Pty Ltd.
Suite 801, Level 8, 123 Epping Road, North Ryde NSW 2113, Australia Tel: +61-2-9888-4100 www.hitachi.com.au

Hitachi Europe Ltd., Digital Media Group Consumer Affairs Department
Whitebrook Park, Lower Cookham Road, Maidenhead, Berkshire, SL6 8YA, UK Tel: +44-1628-585000 www.hitachidigitalmedia.com

Hitachi Maxell, Ltd.
5030 Totsuka-cho, Totsuka-ku Yokohama, 244-0003, Japan <http://www.hitachi.co.jp/proj/>





K series



9000 series



8000 series



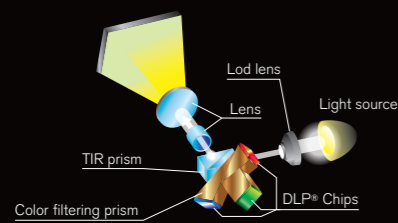
5000 series 4000 series



Model Name	CP-WU13K	CP-X9110 CP-X9111	CP-WX9210 CP-WX9211	CP-WU9410 CP-WU9411	NEW CP-HD9320 CP-HD9321	CP-X8170	CP-WX8265	CP-WU8460	NEW CP-WU8461	CP-X8160	CP-WX8255A	CP-WU8450	NEW CP-WU8451	CP-SX8350	CP-X8150	CP-WX8240A	CP-WU8440	CP-X5022WN	CP-X4022WN	CP-WX4022WN		
Display System	3-Chip DLP®	1-Chip DLP®				3 LCD											3 LCD					
Light Output (Brightness)	13,000lm	10,000lm	8,500lm	8,500lm	8,200lm	7,000lm	6,500lm	6,000lm	6,000lm	6,000lm	5,500lm	5,000lm	5,000lm	5,000lm	5,000lm	4,000lm	4,200lm	5,000lm	4,000lm	4,000lm		
Resolution	WUXGA 1,920 x 1,200	XGA 1,024 x 768	WXGA 1,280 x 800	WUXGA 1,920 x 1,200	Full HD 1,920 x 1,080	XGA 1,024 x 768	WXGA 1,280 x 800	WUXGA 1,920 x 1,200	WUXGA 1,920 x 1,200	XGA 1,024 x 768	WXGA 1,280 x 800	WUXGA 1,920 x 1,200	WUXGA 1,920 x 1,200	SXGA+ 1,400 x 1,050	XGA 1,024 x 768	WXGA 1,280 x 800	WUXGA 1,920 x 1,200	XGA 1,024 x 768	XGA 1,024 x 768	WXGA 1,280 x 800		
Light Source	465W x 2	370W x 2			365W x 2	365W					330W				245W			245W				
Standard Outside Dimensions (W x H x D)	500mm x 270mm x 633mm (19.7" x 10.6" x 24.9") (Excluding lens and protruding parts)	537mm x 170mm x 438mm (21.1" x 6.7" x 17.2") (Excluding lens and protruding parts)				498mm x 135mm x 396mm (19.6" x 5.3" x 15.6") (Excluding protruding parts)											401mm x 103mm x 318mm (15.8" x 4.1" x 12.5") (Excluding protruding parts)					
Weight	Approx. 34.0kg (75.0lbs.) (Excluding lens)	Approx. 16.6kg (36.6lbs.) (Excluding lens)				Approx. 8.8kg (19.4lbs.)					Approx. 9.2kg (20.3lbs.)	Approx. 8.8kg (19.4lbs.)	Approx. 8.7kg (19.2lbs.)	Approx. 8.8kg (19.4lbs.)	Approx. 9.2kg (20.3lbs.)	Approx. 8.7kg (19.2lbs.)	Approx. 8.4kg (18.5lbs.)	Approx. 8.4kg (18.5lbs.)	Approx. 8.7kg (19.2lbs.)	Approx. 4.6kg (10.1lbs.)		
Main Features	3G / HD / SD-SDI 2 HDMI input Dual Lamp Lamp Power Mode Edge Blending Motorized Zoom , Focus, and Lens Shift	2 HDMI input ACCENTUALIZER HDCR Built-in Dual Color Wheel HDBaseT Dual Lamp Edge Blending Geometric Correction (Warping) Status Monitor Display Motorized Zoom , Focus, and Lens Shift SDI input , Portrait projection (CP-HD9320 , CP-HD9321)				2 HDMI input ACCENTUALIZER HDCR (CP-WU8461) P by P / P in P High Efficiency Optical System Slim Design 360° Projection Status Monitor Display Motorized Zoom , Focus, and Lens Shift HDBaseT (CP-WU8461)					2 HDMI input ACCENTUALIZER (CP-WU8451) HDCR (CP-WU8451) P by P (except for CP-X8160) / P in P (CP-WU8451) High Efficiency Optical System Slim Design 360° Projection Status Monitor Display Motorized Zoom , Focus, and Lens Shift 2.0x Zoom Standard Lens HDBaseT (CP-WU8451)				2 HDMI input P by P (CP-WX8240A, CP-WU8440) High Efficiency Optical System Slim Design Motorized Zoom , Focus, and Lens Shift			1.7x Zoom Lens Intelligent ECO Instant Stack Manual V + H Lens Shift				

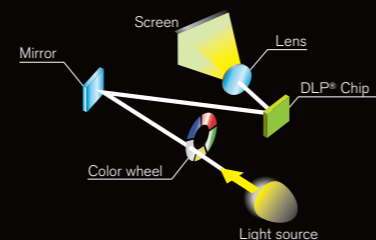
3-Chip DLP®

Each chip is divided by a light prism into each of the three primary color chips instead of the light being directed into one unique chip. The light is then redirected and combined through the projector lens as the image. This 3-chip system makes images natural with vivid colors.



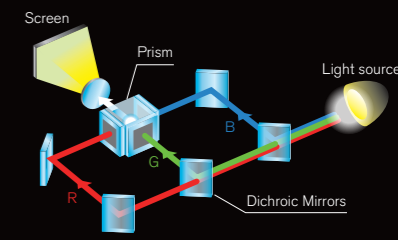
1-Chip DLP®

Projection method that uses a single DLP® chip to switch the red, green, and blue signals according to the color wheel. This method provides excellent color uniformity of images, durability, and is ideal for multiple projections and 24-hour use.



3 LCD Chips with Inorganic Alignment Layers

Projectors incorporate three LCD panels with inorganic alignment layers that are extremely light resistant, increasing brightness and contrast ratio. They ensure smooth images and high reliability.





K series

CP-WU13K



Project images with vivid colors with high-definition on large screens. The bright 13,000-lumen flagship model with Full HD support.

CP-WU13K

WUXGA 13,000lm



Advanced Installability and System Features for Various Uses

Edge Blending

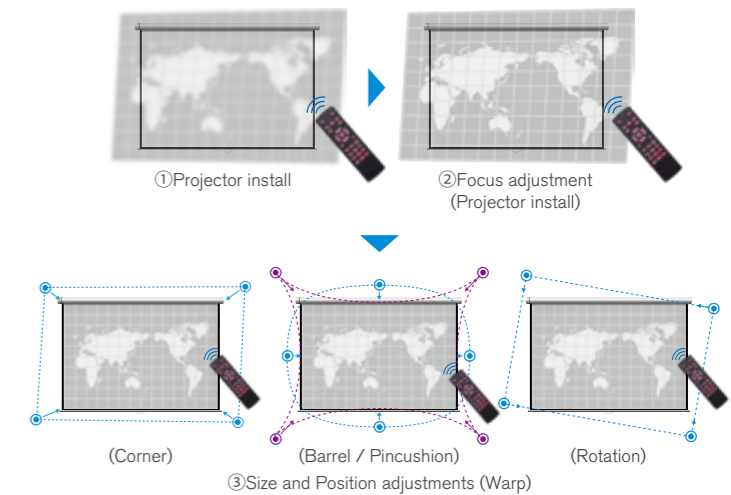


The projectors are equipped with the Edge Blending function that achieves further seamless projection of one image using multiple projectors.



Powered Focus and Warp

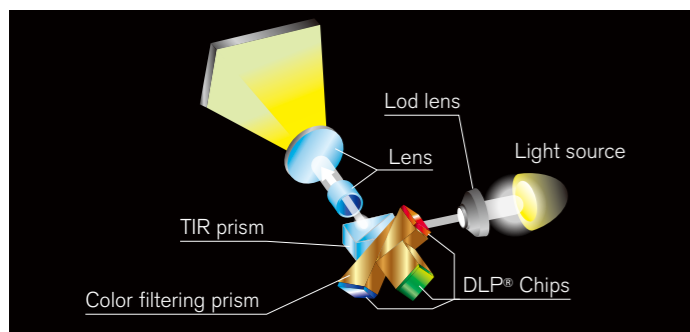
The position of the four corners, sides, and rotation of a projected image can be adjusted with Warp. Focus can be adjusted with Powered Focus. The focus and position can easily be adjusted with the remote control.



High Brightness and Image Quality That Deliver Bright Vivid Colors

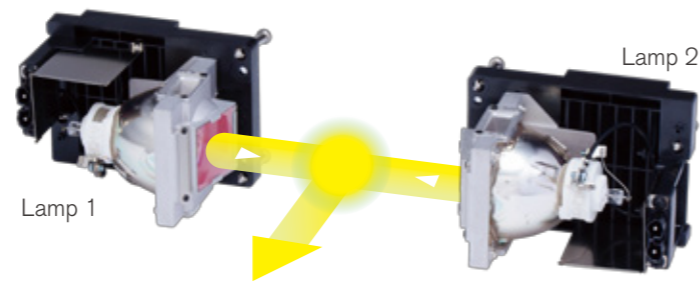
3-Chip DLP®

Each chip is divided by a light prism into each of the three primary color chips instead of the light being directed into one unique chip. The light is then redirected and combined through the projector lens as the image. This 3-chip system makes images natural with vivid colors.



Dual Lamp

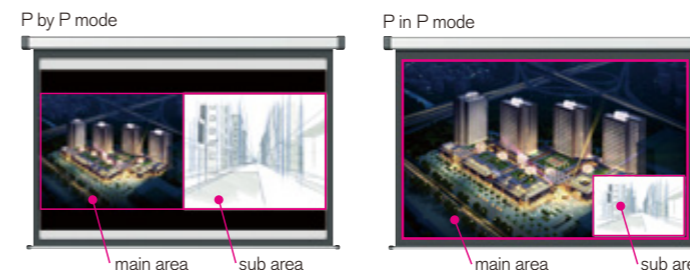
Equipped with a dual lamp system that achieves a high brightness of 13,000lm. The period between lamp maintenance can be extended by using the single lamp mode, which automatically chooses and turns on the lamp with lower usage hours.



P by P / P in P Functions

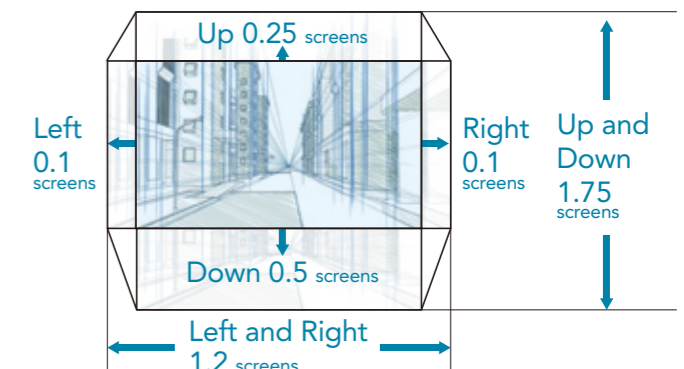
Images from two input signals can be projected on one screen at the same time. Picture by Picture (P by P) enables you to compare two images side by side. Picture in Picture (P in P) enables you to display one image within another image. These functions are handy when you need to compare two sets of data or other material.

* Depending on the input signal, some combinations of simultaneous displays may not be available.



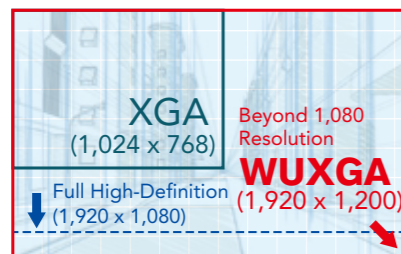
Motorized Lens Shift

The motorized lens shift lets you choose more convenient installation location, even for large spaces. The figure shows the lens shift range at the ceiling mounting position. * Not available with FL-K01 lens.



WUXGA

The projectors support high resolution WUXGA that covers Full HD. You can fully enjoy wide-screen images with a sense of reality.



Brightness

Lamp mode		Brightness
Dual	Normal	13,000lm
	Eco	10,000lm
	Power	10,000 - 13,000lm
Single	Normal	6,500lm
	Eco	5,000lm
	Power	5,000lm - 6,500lm



Power mode is useful to keep brightness consistent when using multiple projectors.

Digital connectivity

4 Digital Inputs

The projector provides 4 digital inputs consisting of HDMI (x2), SDI and DVI to handle many types of installation environments.

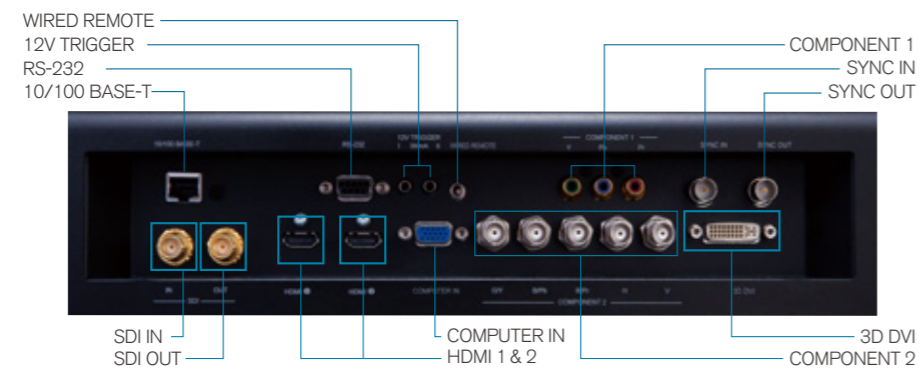
** The 3D DVI input terminal supports the WUXGA /1080 signals only. No OSD functions are available while the 3D DVI input is selected.

SDI

Equipped with an SDI input - the standard in the broadcast industry. 3G SDI can transfer 1080P signals via a coaxial cable.



Terminals



Ensuring High Reliability and Stability

Hybrid Filter

The finely crafted form of the projectors incorporates a two-layer filter, providing defense against dust with a pleats type filter and urethane filter. Thanks to its long life and easy maintenance, this model is ideal for use in retail, digital signage, and other environments where the projector is in constant use.

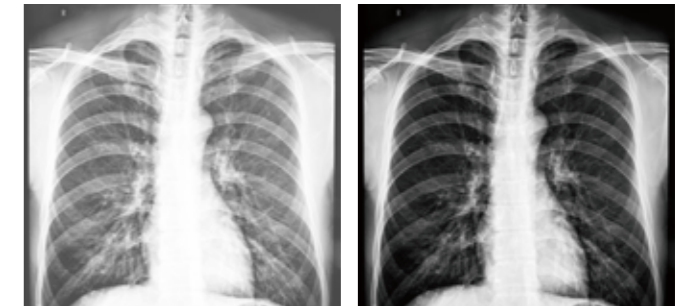


High Brightness and Image Quality that Express Images Brilliantly

DICOM® Simulation Mode

The DICOM® (Digital Imaging and Communications in Medicine) Simulation Mode projects grayscale images which approximate DICOM® Part 14 specifications. This mode is ideal for viewing grayscale medical images, such as X-rays, for training and educational purposes.

The projectors have a DICOM® Simulation Mode. This mode simulates the DICOM® standard, which is a standard applicable to digital communications in medicine, and is useful for displaying medical images such as X-rays. These projectors are not medical devices and are not compliant with the DICOM® standard, and neither the projector nor the DICOM® Simulation Mode should be used for medical diagnosis. Comparison photos are simulations.



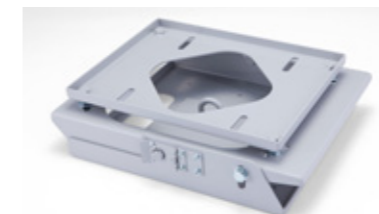
Normal Mode

DICOM® Simulation Mode

Options

Ceiling Mount

The ceiling mount lets you hang the projector with a distance of up to 97 cm from the ceiling. You can move the projector up and down or rotate it to finely adjust the position of the projected screen.



[HAS-13K]

Frame

The stackable frames for the K series let you create a 2-level frame with projectors that are secured. They are equipped with adjustment mechanisms to tilt, elevate, and pan allowing you to finely adjust the position of the projected screen.



[FS-13K]



2-level frame configuration

Variety of Interchangeable Lens Options

Lenses are all optional

Six lenses are available to match various screen sizes and installation environments. Projection is possible in diverse installation areas from small conference rooms to auditoriums, convention halls, and other large spaces.

	Projection distance for 200" screen (16:10) (Projector's front panel to screen)	Throw ratio	Projection distances for optional lenses when projecting onto a 200" screen (16:10)
FL-K01 Short throw lens Fixed zoom	3.0m	0.67	
FL-K02 Short throw lens Fixed zoom	5.0m	1.12	
SL-K03 Short throw zoom lens Zoom: x1.3	6.1 - 8.2m	1.39 - 1.87	
ML-K04 Standard zoom lens Zoom: x1.3	8.2 - 11.1m	1.87 - 2.56	
LL-K05 Long throw zoom lens Zoom: x1.6	11.1 - 18.0m	2.56 - 4.16	
UL-K06 Ultra long throw zoom lens Zoom: x1.6	18.0 - 30.0m	4.16 - 6.96	



Event Halls Large Conference Rooms Museum

9000 series

CP-X9110 / CP-WX9210 / CP-WU9410 / CP-HD9320
CP-X9111* / CP-WX9211* / CP-WU9411* / CP-HD9321*



Models that are ideal for 24-hour use and capable of multi-projection using multiple projectors

High Brightness and Image Quality That Deliver Bright Vivid Colors

Built-in Dual Color Wheel

Two color wheels are built in to match usage conditions. By switching the color wheel, you can achieve an image quality to match the projected image. Previously requiring the services of an expert, Hitachi unique

technology allows you to switch the color wheel in about 10 seconds with the remote control without having to open the chassis to install the color wheel.

Rich Color mode

Reproduces color in levels equivalent to digital cinema. Ideal for use in museums and for viewing videos that emphasize color.

Bright mode

Prioritizes brightness and sharpens white colors. Achieves projections with contrast and bright images, making it ideal for presentations and other situations that require the sharing of information.

ACCENTUALIZER

Hitachi original technology makes pictures look more real by enhancing shade, sharpness, and gloss to make pictures as clear as pictures on a flat-panel device. You can also adjust the effects by three levels according to your surroundings.

ACCENTUALIZER OFF ACCENTUALIZER ON

Original image Increased shade, sharpness, and gloss

CP-X9110 XGA 10,000lm	CP-WX9210 WXGA 8,500lm	CP-WU9410 WUXGA 8,500lm	CP-HD9320 NEW Full HD 8,200lm
CP-X9111* XGA 10,000lm	CP-WX9211* WXGA 8,500lm	CP-WU9411* WUXGA 8,500lm	CP-HD9321* NEW Full HD 8,200lm

* Local availability may be limited.

HDCR (High Dynamic Contrast Range)

Dark room HDCR OFF Bright room HDCR OFF

Dark areas are obscure. Dark areas are clear. (Distinct)

When average projectors are used in bright rooms, the darker areas of images are obscure and images become unclear.

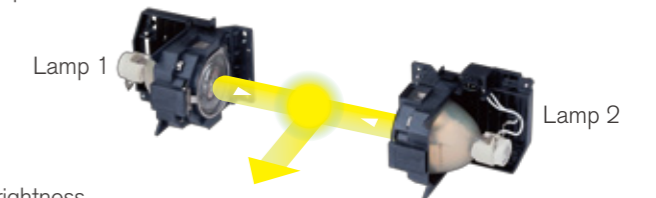
Using this function, blurred images caused by room lighting or outside light sources are corrected, and an effect similar to increased contrast occurs. This results in clear images even in bright rooms.

Bright room HDCR ON

Dark areas are clear. (Distinct)

Dual Lamp

Equipped with a dual lamp system that achieves a high brightness of 10,000lm* in a compact body weighing only 16.6kg (36.6lbs)**. The period between lamp maintenance can be doubled by using the single lamp mode.



* CP-X9110/CP-X9111 ** Does not include lens.

Brightness

Lamp mode		CP-X9110 CP-X9111	CP-WX9210, CP-WU9410 CP-WX9211, CP-WU9411	CP-HD9320 CP-HD9321
Dual	Normal	10,000lm	8,500lm	8,200lm
	Eco	7,500lm	6,400lm	6,200lm
Single	Normal	5,000lm	4,250lm	4,100lm
	Eco	3,800lm	3,200lm	3,100lm

Digital connectivity

Multiple Digital Inputs

The projectors provide digital inputs consisting of HDBaseT™, HDMI (x2), DVI-D, and SDI* to handle many types of installation environments. HDBaseT can transmit signals with no image degradation using standard LAN cables (Cat5e/6) of up to 100m. SDI* is the standard in the broadcast industry. 3G SDI can transfer 1080P signals via a coaxial cable.

* Only for the CP-HD9320 and CP-HD9321



Full HD and WUXGA

The projectors support high resolution Full HD* and WUXGA** that covers Full HD. You can fully enjoy wide-screen images with a sense of reality.

* CP-HD9320 and CP-HD9321
** CP-WU9410 and CP-WU9411

Beyond 1,080 Resolution
WUXGA
(1,920 x 1,200)

Full HD
(1,920 x 1,080)

DICOM® Simulation Mode

The DICOM® (Digital Imaging and Communications in Medicine) Simulation Mode projects grayscale images which approximate DICOM® Part 14 specifications. This mode is ideal for viewing grayscale medical images, such as X-rays, for training and educational purposes.

The projectors have a DICOM® Simulation Mode. This mode simulates the DICOM® standard, which is a standard applicable to digital communications in medicine, and is useful for displaying medical images such as X-rays. These projectors are not medical devices and are not compliant with the DICOM® standard, and neither the projector nor the DICOM® Simulation Mode should be used for medical diagnosis. Comparison photos are simulations.

Normal Mode DICOM® Simulation Mode

Terminals
CP-X9110 / CP-X9111 / CP-WX9210 / CP-WX9211 / CP-WU9410 / CP-WU9411

COMPUTER IN 1 MONITOR OUT HDMI 2 DVI-D HDBaseT
HDMI 1 WIRELESS LAN

COMPUTER IN 2 CONTROL VIDEO REMOTE CONTROL OUT
REMOTE CONTROL IN

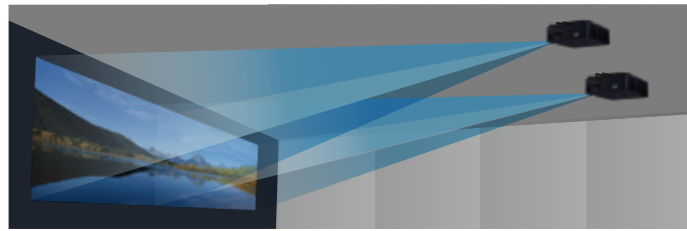
CP-HD9320 / CP-HD9321

COMPUTER IN SDI HDMI 2 DVI-D HDBaseT
HDMI 1 WIRELESS LAN

MONITOR OUT CONTROL VIDEO REMOTE CONTROL OUT
REMOTE CONTROL IN

Advanced Installability and System Features for Various Uses

Edge Blending



The projectors are equipped with the Edge Blending function that achieves further seamless projection of one image using multiple projectors. The 9000 series comes with various blending functions that meet the level users are looking for.

Automatic Blending



Use a camera and quickly perform high precision blending processing automatically.
* Requires installation of a specialized application to your computer.

Instant Blending



Perform blending processing without the use of any special equipment.

360° Projection

The projectors can be installed facing any vertical 360 degree direction providing many projection possibilities. For example, you can install a projector to project onto a floor or ceiling. You can utilize the projectors in many different ways.



Portrait Projection*

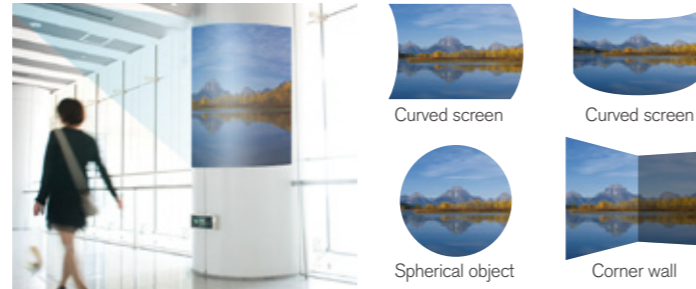
You can project images that are vertically long by rotating the installation position of the projector 90 degrees. This feature makes it possible to provide various displays and image representations never before possible.

* Only for the CP-HD9320 and CP-HD9321



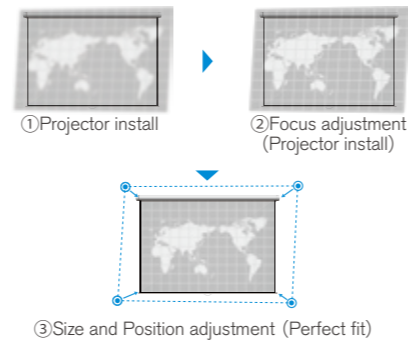
Geometric Correction (Warping)

Geometric correction is possible from your computer by using the specialized application. Projection is possible on spherical surfaces and surfaces with corners, as well as conventional flat screens.



Perfect Fit

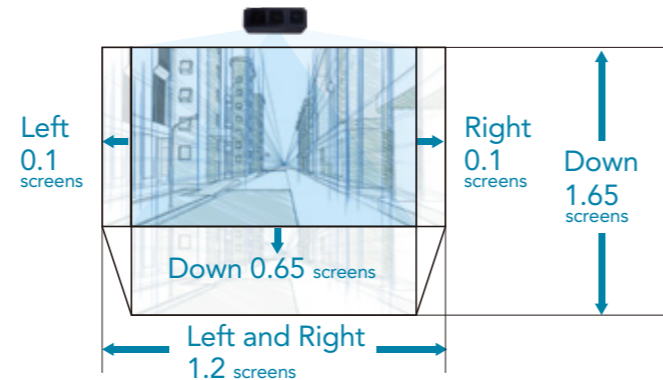
Equipped with powered focus and Perfect fit with which the position of the four corners and four sides of a projected image can be adjusted. With the remote controller at hand, you can adjust focus and the position of an image.



Motorized Lens Shift

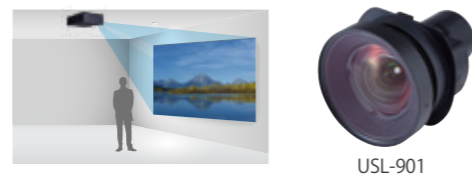
The motorized lens shift lets you choose more convenient installation location, even for large spaces.

* The figure below shows the lens shift range for CP-WX9210/CP-WX9211 with the standard lens SD-903W at the ceiling mounting position.



Short Zoom Lens

An optional short zoom lens developed by Hitachi offers powered zoom, powered focus, and adequate lens shift. This lens increases installability of the projectors like never before.

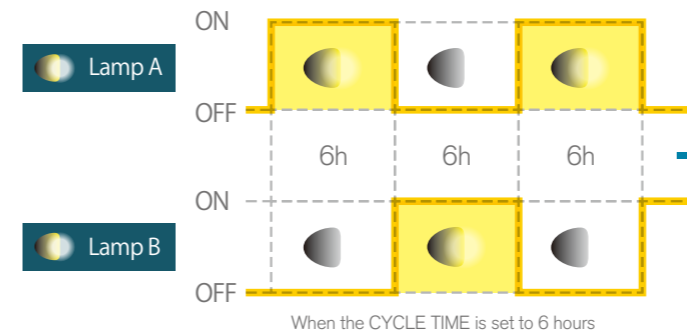


Ensuring High Reliability and Stability

All-day Use

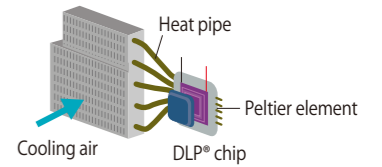
Equipped with the highly reliable Dual Lamp System. If one lamp stops functioning while using in the DUAL mode, the other lamp continues to project the image with no interruption in the projection. Also, long hours of continuous operation is available with the ALTERNATIVE mode which alternates the use of the two lamps.

ALTERNATIVE mode



Cooling System

Peltier elements are positioned on the rear surface of the DLP® chip and provide efficient cooling in environments with an ambient temperature of up to 50 degrees Celsius.



Hybrid Filter

The finely crafted form of these projectors incorporates a three-layer filter, providing defense against dust with unwoven cloth layers and an HAF (High Air Flow) filter. Thanks to its long life and easy maintenance, these models are ideal for use in retail, digital signage, and other environments where the projector is in constant use.



Variety of Interchangeable Lens Options

Lenses are all optional

Seven lenses are available to match various screen sizes and installation environments. Projection is possible in diverse installation areas from small conference rooms to auditoriums, convention halls, and other large spaces.

		Projection distance for 100" screen (Full screen) (Projector's front panel to screen)	Throw ratio	Projection distances for optional lenses when projecting onto a 100" screen (Full screen)
USL-901 Ultra short throw lens Zoom: x1.3	CP-X9110, CP-X9111	1.7 - 2.1m (66" - 82")	0.8 - 1.0	
	CP-WX9210, CP-WX9211	1.8 - 2.2m (71" - 88")	0.8 - 1.0	
	CP-WU9410, CP-WU9411	1.7 - 2.1m (67" - 84")	0.8 - 1.0	
	CP-HD9320, CP-HD9321	1.8 - 2.2m (69" - 86")	0.8 - 1.0	
SL-902 Short throw lens Zoom: x1.5	CP-X9110, CP-X9111	2.5 - 3.7m (98" - 146")	1.2 - 1.8	
	CP-WX9210, CP-WX9211	2.7 - 4.0m (105" - 156")	1.2 - 1.8	
	CP-WU9410, CP-WU9411	2.5 - 3.8m (100" - 149")	1.1 - 1.7	
	CP-HD9320, CP-HD9321	2.6 - 3.9m (103" - 153")	1.1 - 1.7	
SD-903W Standard lens Zoom: x1.5	CP-WX9210, CP-WX9211	3.7 - 5.6m (147" - 220")	1.7 - 2.6	
	CP-WU9410, CP-WU9411	3.5 - 5.3m (140" - 209")	1.6 - 2.4	
	CP-HD9320, CP-HD9321	3.6 - 5.5m (143" - 215")	1.6 - 2.4	
SD-903X Standard lens Zoom: x1.5	CP-X9110, CP-X9111	3.5 - 5.2m (136" - 205")	1.7 - 2.5	
ML-904 Middle throw lens Zoom: x1.5	CP-X9110, CP-X9111	5.1 - 7.8m (200" - 306")	2.5 - 3.8	
	CP-WX9210, CP-WX9211	5.5 - 8.3m (216" - 329")	2.5 - 3.8	
	CP-WU9410, CP-WU9411	5.2 - 7.9m (205" - 313")	2.4 - 3.6	
LL-905 Long throw lens Zoom: x1.6	CP-X9110, CP-X9111	7.4 - 12.0m (291" - 471")	3.6 - 5.8	
	CP-WX9210, CP-WX9211	8.0 - 12.9m (314" - 506")	3.7 - 5.9	
	CP-WU9410, CP-WU9411	7.6 - 12.2m (298" - 482")	3.5 - 5.6	
UL-906 Ultra long throw lens Zoom: x1.6	CP-X9110, CP-X9111	11.7 - 18.6m (462" - 732")	5.7 - 9.1	
	CP-WX9210, CP-WX9211	12.6 - 20.0m (496" - 786")	5.8 - 9.2	
	CP-WU9410, CP-WU9411	12.0 - 19.0m (472" - 749")	5.5 - 8.8	
	CP-HD9320, CP-HD9321	12.3 - 19.5m (485" - 769")	5.5 - 8.8	



8000 series

CP-X8170 / CP-WX8265 / CP-WU8460 / CP-WU8461
CP-X8160 / CP-WX8255A / CP-WU8450 / CP-WU8451
CP-SX8350 / CP-X8150 / CP-WX8240A / CP-WU8440



Providing advanced functions and flexible installation features

Event Halls Large Conference Rooms

CP-X8170 XGA 7,000lm	CP-WX8265 WXGA 6,500lm	CP-WU8460 WUXGA 6,000lm	CP-WU8461 NEW WUXGA 6,000lm
CP-X8160 XGA 6,000lm	CP-WX8255A WXGA 5,500lm	CP-WU8450 WUXGA 5,000lm	CP-WU8451 NEW WUXGA 5,000lm
CP-SX8350 SXGA+ 5,000lm	CP-X8150 XGA 5,000lm	CP-WX8240A WXGA 4,000lm	CP-WU8440 WUXGA 4,200lm

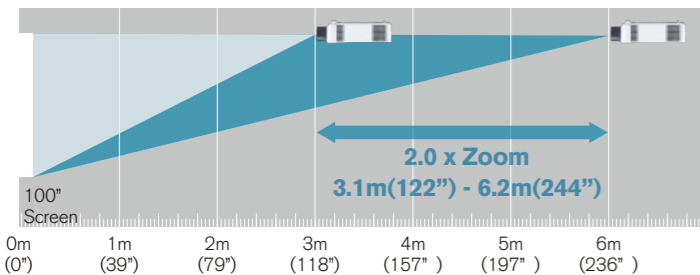


Awarded models: CP-WU8461, CP-X8160, CP-WX8255A, CP-WU8450, CP-WU8451, CP-SX8350, CP-X8150, CP-WX8240A, CP-WU8440
The iF Design Award is a prestigious worldwide design award that began in 1953 in Germany, the origin of modern design. These 8000 series projectors were awarded the iF Gold Award.

Advanced Installability and System Features for Various Uses

2.0x Zoom Lens

Featuring a powerful 2.0x manual zoom lens, the projectors allow for a greater range of installation possibilities. This is particularly convenient in rooms that lack installation flexibility due to ceiling obstructions such as water sprinklers, vents, and lighting fixtures.



* CP-SX8350, CP-X8150, CP-WX8240A: 1.5x
* The projection distance above is for the CP-X8170.

360° Projection

The projectors can be installed facing any vertical 360 degree direction providing many projection possibilities. For example, you can install a projector to project onto a floor or ceiling. You can utilize the projectors in many different ways.



* Not available with the CP-SX8350, CP-X8150, CP-WX8240A, and CP-WU8440.

Lens Center Design

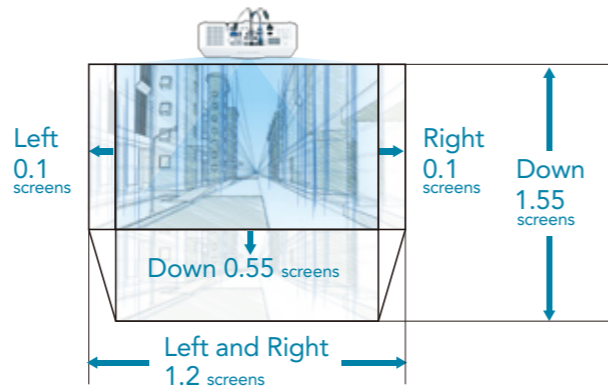
By aligning the center of the projector and lens, the installation position of the projector becomes simple during the design and construction of a facility.



Motorized Lens Shift

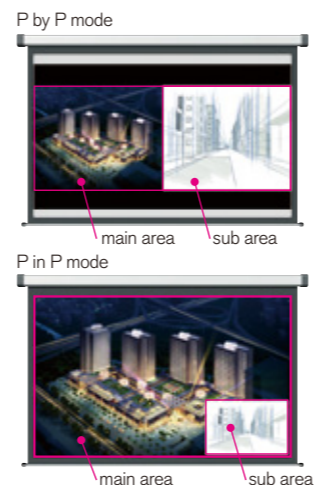
The motorized lens shift lets you choose more convenient installation location, even for large spaces.

* The figure below shows the lens shift range for CP-WU8460/CP-WU8461 with the standard lens ML-703 at the ceiling mounting position.

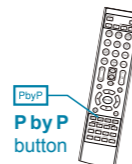


P by P / P in P Functions

Images from two input signals can be projected on one screen at the same time. Picture by Picture (P by P) enables you to compare two images side by side. Picture in Picture (P in P) enables you to display one image within another image. These functions are handy when you need to compare two sets of data or other material.



* These functions are not available with CP-X8160, CP-X8150, and CP-SX8350. The P in P function is available with CP-X8170, CP-WX8265, CP-WU8460, CP-WU8461, and CP-WU8451.



High Brightness and Image Quality that Express Images Brilliantly

ACCENTUALIZER

Hitachi original technology makes pictures look more real by enhancing shade, sharpness, and gloss to make pictures as clear as pictures on a flat-panel device. You can also adjust the effects by three levels according to your surroundings.

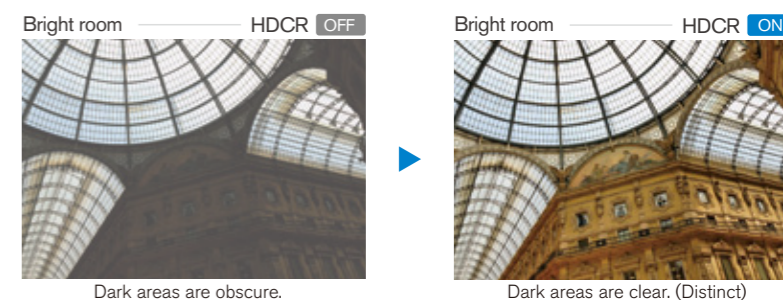
* Only for the CP-X8170, CP-WX8265, CP-WU8460, CP-WU8461, and CP-WU8451



HDCR (High Dynamic Contrast Range)

When average projectors are used in bright rooms, the darker areas of images are obscure and images become unclear. Using this function, blurred images caused by room lighting or outside light sources are corrected, and an effect similar to increased contrast occurs. This results in clear images even in bright rooms.

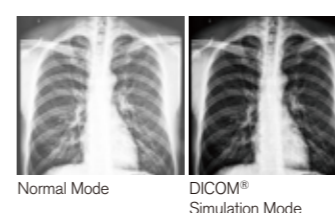
* Only for the CP-WU8461, and CP-WU8451



DICOM® Simulation Mode

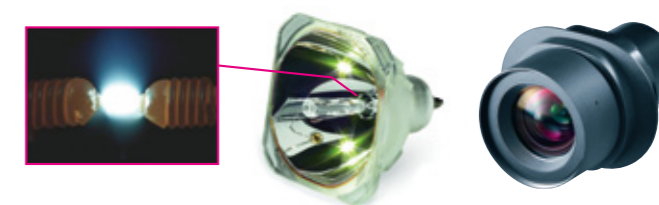
The DICOM® (Digital Imaging and Communications in Medicine) Simulation Mode projects grayscale images which approximate DICOM® Part 14 specifications. This mode is ideal for viewing grayscale medical images, such as X-rays, for training and educational purposes.

The projectors have a DICOM® Simulation Mode. This mode simulates the DICOM® standard, which is a standard applicable to digital communications in medicine, and is useful for displaying medical images such as X-rays. These projectors are not medical devices and are not compliant with the DICOM® standard, and neither the projector nor the DICOM® Simulation Mode should be used for medical diagnosis. Comparison photos are simulations.



High Efficiency Optical System

The projectors achieve a brightness of the highest class in the industry by adopting a short arc length lamp with a small F-number lens.



Ensuring High Reliability and Stability



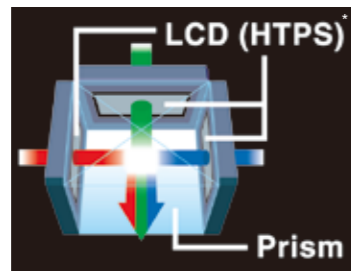
Hybrid Filter

The projectors use a three-layer filter with two layers of unwoven cloth and an HAF (High Air Flow) filter. The filter can last up to 20,000 hours* without cleaning, reducing maintenance time.

* 15,000 hours for CP-SX8350, CP-X8150, CP-WX8240A, and CP-WU8440. Varies according to usage environment.

Inorganic LCD panels

Hitachi 3LCD projectors incorporate three LCD panels with inorganic alignment layers that are extremely light resistant, increasing brightness and contrast ratio. They ensure smooth images and high reliability.



HTPS (High Temperature Poly-Silicon)

Status Monitor

The status monitor is a sub-LCD located on the rear panel of the CP-X8170, CP-WX8265, CP-WU8460, CP-X8160, CP-WX8255A, and CP-WU8450. It displays the present condition of the projector, including errors, setup information, and error history.

Real time monitoring

- Lamp time • Filter time
- Projector usage time • IP Address

Error and alarm message

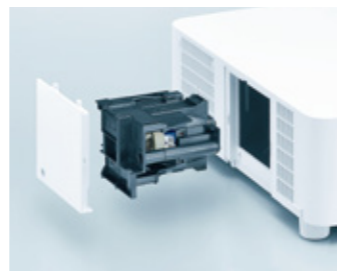
- Cover error • Lamp error • Temperature error
- Filter cleaning time and more...



An error message turns on.

Easy Maintenance

The lamp door and the filter cover are located on both sides, facilitating maintenance and replacement when the projector is installed on the ceiling. The serial number and MAC address are also labeled on the side chassis for easy readability.



Digital connectivity

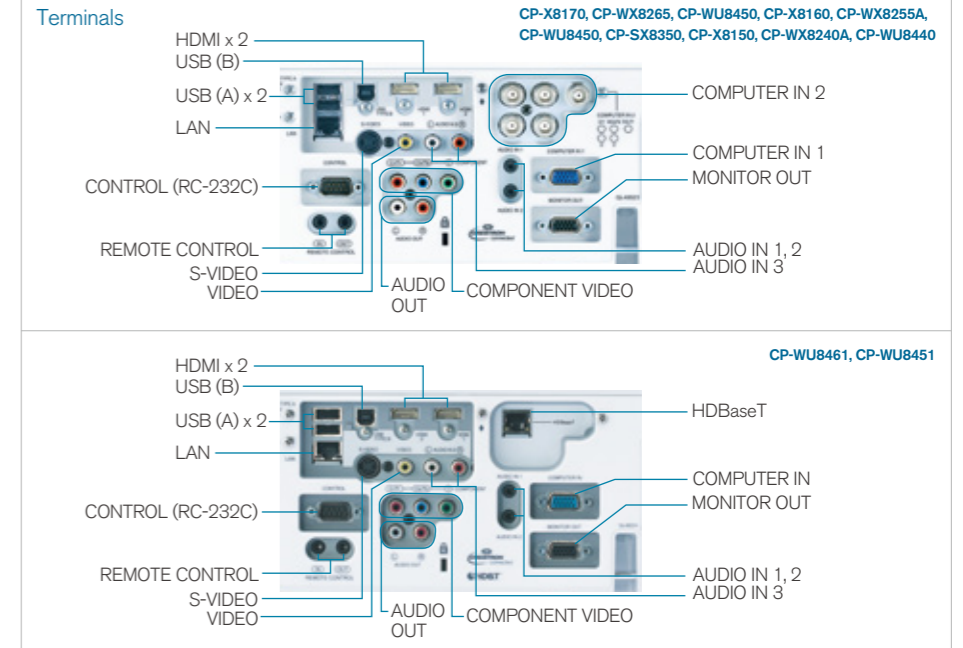
2 HDMI input

Equipped with 2 terminals for the current widely-used interface.

HDBaseT™

Signals can be transmitted with no image degradation using standard LAN cables (Cat5e/6) of up to 100m.

* Only for the CP-WU8461 and CP-WU8451



Variety of Interchangeable Lens Options

Five lenses are available to match various screen sizes and installation environments. Projection is possible in diverse installation areas from small conference rooms to auditoriums, convention halls, and other large spaces.

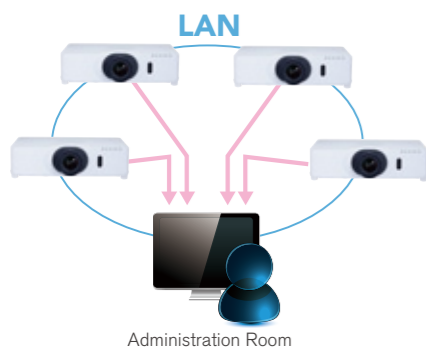
		Projection distance for 100" screen (Full screen) (Projector's front panel to screen)	Throw ratio	Projection distances for optional lenses when projecting onto a 100" screen (Full screen)		
FL-701 Fixed short throw lens Zoom: Fixed	CP-X8170, CP-X8160 CP-WX8265, CP-WX8255A CP-WU8460, CP-WU8461, CP-WU8450, CP-WU8451, CP-WU8440	1.7m (67") 1.8m (71")	0.8 0.8			
	CP-SX8350	1.7m (69")	0.8			
	CP-X8150	1.7m (66")	0.8			
	CP-WX8240A	2.1m (83") 2.2m (88")	1.0 1.0			
	SL-702 Short throw lens Zoom: x1.5	CP-X8170, CP-X8160 CP-WX8265, CP-WX8255A CP-WU8460, CP-WU8461, CP-WU8450, CP-WU8451, CP-WU8440	2.5 - 3.7m (97" - 145") 2.6 - 3.9m (102" - 154")		1.2 - 1.8 1.2 - 1.8	
		CP-SX8350	2.5 - 3.8m (100" - 151")		1.2 - 1.8	
CP-X8150		2.4 - 3.7m (96" - 144")	1.2 - 1.8			
CP-WX8240A		3.1 - 4.6m (120" - 181") 3.2 - 4.9m (127" - 192")	1.5 - 2.2 1.5 - 2.2			
ML-703 Middle throw lens Zoom: x2.0		CP-X8170, CP-X8160 CP-WX8265, CP-WX8255A CP-WU8460, CP-WU8461, CP-WU8450, CP-WU8451, CP-WU8440	3.1 - 6.2m (122" - 242") 3.3 - 6.5m (129" - 257")	1.5 - 3.0 1.5 - 3.0		
		CP-SX8350	3.2 - 6.4m (127" - 252")	1.5 - 3.0		
	CP-X8150	3.1 - 6.1m (121" - 241")	1.5 - 3.0			
	CP-WX8240A	3.9 - 7.7m (153" - 303") 4.1 - 8.1m (162" - 321")	1.9 - 3.8 1.9 - 3.8			
	LL-704 Long throw lens Zoom: x1.7	CP-X8170, CP-X8160 CP-WX8265, CP-WX8255A CP-WU8460, CP-WU8461, CP-WU8450, CP-WU8451, CP-WU8440	5.9 - 10.0m (231" - 392") 6.2 - 10.5m (244" - 415")	2.8 - 4.9 2.8 - 4.9		
		CP-SX8350	6.1 - 10.3m (240" - 407")	2.8 - 4.9		
CP-X8150		5.8 - 9.9m (229" - 389")	2.8 - 4.9			
CP-WX8240A		7.3 - 12.4m (288" - 490") 7.8 - 13.2m (305" - 520")	3.6 - 6.1 3.6 - 6.1			
UL-705 Ultra long throw lens Zoom: x1.7		CP-X8170, CP-X8160 CP-WX8265, CP-WX8255A CP-WU8460, CP-WU8461, CP-WU8450, CP-WU8451, CP-WU8440	10.0 - 16.9m (393" - 667") 10.5 - 17.9m (415" - 705")	4.9 - 8.3 4.9 - 8.3		
		CP-SX8350	10.3 - 17.6m (407" - 691")	4.9 - 8.3		
	CP-X8150	9.9 - 16.8m (390" - 662")	4.9 - 8.3			
	CP-WX8240A	12.4 - 21.1m (487" - 830") 13.1 - 22.3m (516" - 879")	6.0 - 10.3 6.0 - 10.3			

* ML-703 comes standard on the CP-X8170, CP-X8160, CP-WU8460, CP-WU8461, CP-WU8450, CP-WU8451, CP-WU8440, CP-WX8265, and CP-WX8255A.
SL-702 comes standard on the CP-SX8350, CP-X8150, and CP-WX8240A.

Various Network Features

Convenient Networking

Manage and control multiple projectors over your LAN with Centralized Reporting, Scheduling, E-mail Alerts, and My Image (Image Transfer)



Wireless Capability (Option)

Connect a projector to a computer using the optional USB wireless adapter. The adapter supports IEEE802.11b/g/n. Use the adapter cover to prevent the USB wireless adapter from coming off easily.



Without an access point

With an access point

Smart Device Control

By plugging the USB wireless adapter to the projector and using the dedicated free online application developed by Hitachi, projectors can be controlled from a tablet or smartphone.*



* See the Hitachi website for details
http://www.hitachi.co.jp/proj/en/apps/pj_connection.html

Hardware and software requirements for network capability OS: One of the following. Windows® XP Home Edition/Professional Edition (32bit version only), Windows Vista® Home Basic/Home Premium/Business/Ultimate/Enterprise, Windows® 7 Starter/Home Basic/Home Premium/Professional/Ultimate/Enterprise **CPU:** Pentium®4 (2.8GHz or higher) **Graphic card:** 16bit, XGA or higher (When using the "Live Viewer" it is recommended that the display resolution of your computer be set to 1,024x768.) **Memory:** 512 MB or higher **Hard disk space:** 100MB or higher **Web browser:** Internet Explorer®6.0 or higher **CD-ROM drive**
*If many computers are connected to the network or the connected computer is under excessive load, higher specifications may be required.



5000 series
4000 series



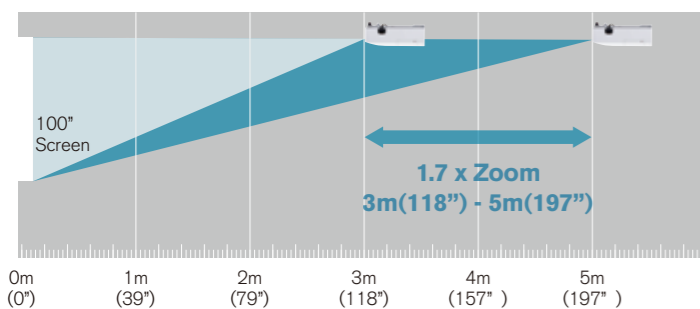
Projectors perfect for classrooms, or small and midsize conference rooms

Advanced Installability and System Features for Various Uses

1.7x Zoom Lens

Featuring a powerful 1.7x manual zoom lens, the projectors allow for a greater range of installation possibilities. This is particularly convenient in rooms that lack installation flexibility due to ceiling obstructions such as water sprinklers, vents, and lighting fixtures.

* The projection distance below is for the CP-X5022WN.

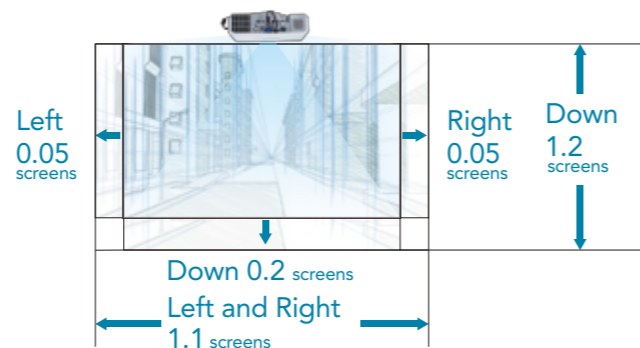


Manual Optical Lens Shift

Manually shift the lens horizontally and vertically, to position the image on the screen without causing any distortion. After ceiling mounting, fine adjustments can be done with a screwdriver and/or hexagonal wrench.

*A hexagonal wrench is included in the product package.

**The figure is for the CP-WX4022WN.



Instant Stack

Instant Stack lets you place one projector on top of another to project the same image from both onto a screen for added brightness. Overlaying the image is made easier with built-in tools including RS-232C control, Perfect Fit, Lens Shift, and stacking alignment peg holes.

Dual mode

Turns on the projectors at the same time.

Alternate mode

Turns on the projectors alternately.



Backup function



When ALTERNATE is selected and an error occurs on one projector, causing the lamp to turn off, the other projector will automatically start to operate.

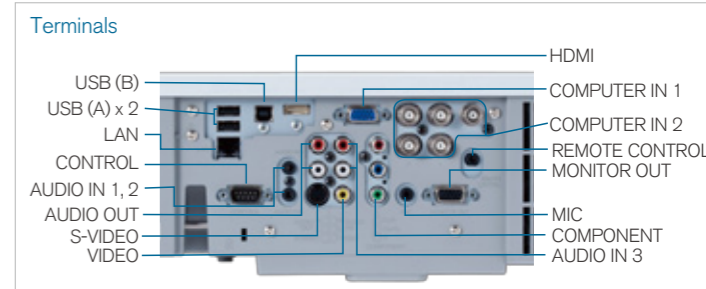
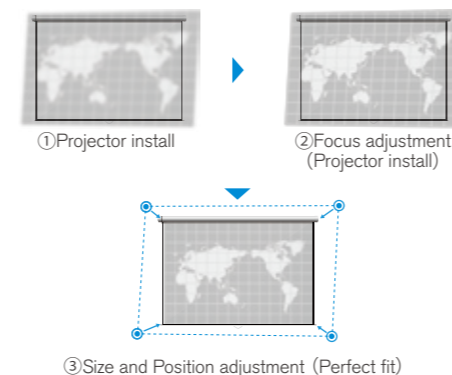
* If the RS-232C cable is disconnected or AC power is not supplied, the other projector will not turn on.



* When stacking projectors, there are various precautions and function limitations you should be aware of. Please ask your dealer for details.

Perfect Fit

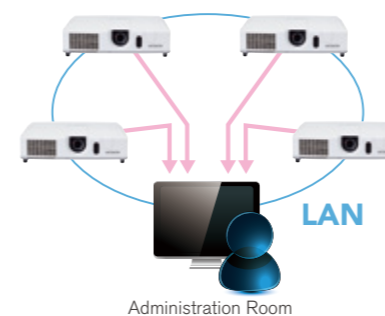
Perfect Fit allows you to make image adjustments by independently moving the individual corners and sides. Ideal for complex installations where sizing the screen for image display is more difficult.



Various Network Features

Convenient Networking

Manage and control multiple projectors over your LAN with Centralized Reporting, Scheduling, E-mail Alerts, and My Image (Image Transfer)



Wireless Capability (Option)

Connect a projector to a computer using the optional USB wireless adapter. The adapter supports IEEE802.11 b/g/n.



Smart Device Control

By plugging the USB wireless adapter to the projector and using the dedicated free online application developed by Hitachi, projectors can be controlled from a tablet or smartphone.



* See the Hitachi website for details http://www.hitachi.co.jp/proj/en/apps/pj_connection.html

Hardware and software requirements for network capability OS: One of the following. Windows® XP Home Edition/Professional Edition (32bit version only), Windows Vista® Home Basic/Home Premium/Business/Ultimate/Enterprise, Windows® 7 Starter/Home Basic/Home Premium/Professional/Ultimate/Enterprise **CPU:** Pentium®4 (2.8GHz or higher) **Graphic card:** 16bit, XGA or higher (When using the "Live Viewer" it is recommended that the display resolution of your computer be set to 1,024x768). **Memory:** 512 MB or higher **Hard disk space:** 100MB or higher **Web browser:** Internet Explorer®6.0 or higher **CD-ROM drive**
*If many computers are connected to the network or the connected computer is under excessive load, higher specifications may be required.

ECO

Saver Mode

This feature developed by Hitachi reduces the projector lamp brightness and consumption of power, resulting in considerable energy savings. Set the Saver mode time from 1 to 30 minutes, and if the projected image does not change in that time, Saver mode activates. Saver mode can also be activated manually with the remote control.

Intelligent Eco Mode

This feature developed by Hitachi automatically changes the brightness of the lamp according to the level of the input signal. Lamp brightness is reduced when a darker image is projected and returns to normal when a brighter image is projected, eliminating unnecessary energy consumption from the lamp.



Ensuring High Reliability and Stability

Hybrid Filter

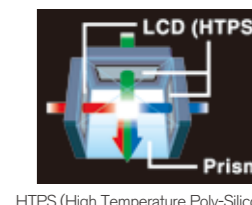
The filter is made of two layers on unwoven cloth and lasts up to approximately 5,000 hours* without cleaning, reducing maintenance time.

*Varies according to usage environment




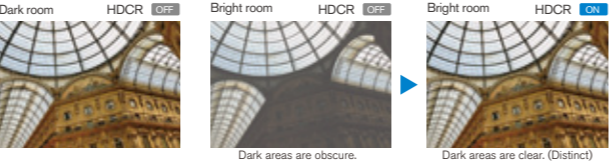
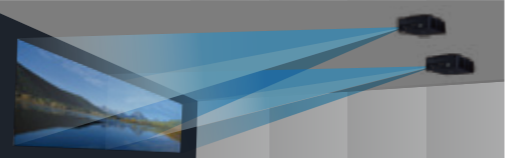


Inorganic LCD panels

Hitachi 3LCD projectors incorporate three LCD panels with inorganic alignment layers that are extremely light resistant, increasing brightness and contrast ratio. They ensure smooth images and high reliability.






HTPS (High Temperature Poly-Silicon)





Features

			3-Chip DLP*	1-Chip DLP*					3 LCD															
			K series	9000 series					8000 series								5000 series 4000 series							
Model Name			CP-WU13K	CP-X9110 CP-X9111	CP-WX9210 CP-WX9211	CP-WU9410 CP-WU9411	CP-HD9320 CP-HD9321	CP-X8170	CP-WX8265	CP-WU8460	CP-WU8461	CP-X8160	CP-WX8255A	CP-WU8450	CP-WU8451	CP-SX8350	CP-X8150	CP-WX8240A	CP-WU8440	CP-X5022WN	CP-X4022WN	CP-WX4022WN		
Digital Connectivity	3G SDI	Equipped with an SDI input – the standard in the broadcast industry. 3G SDI can transfer 1080P signals via a coaxial cable.	●				●																	
	2 HDMI input	Equipped with 2 terminals for the current widely-used interface.	●	●	●	●	●	●	●	●	●	●	●	●	●	●	●	●	●	●				
	HDBaseT™	Signals can be transmitted with no image degradation using standard LAN cables (Cat5e/6) of up to 100m.		●	●	●	●				●				●									
	DVI	Connection via a digital DVI terminal greatly reduces image deterioration, ensuring high picture quality of digital sources. *CP-WU13K displays an image with the original input resolution of the source in the center of the screen.	● (3D DVI)	●	●	●	●																	
High Brightness and Image Quality	High Efficiency Optical System	The projectors achieve a brightness of the highest class in the industry by adopting a short arc length lamp with a small F-number lens.	●	●	●	●	●	●	●	●	●	●	●	●	●	●	●	●	●	●	●	●	●	
	ACCENTUALIZER	Hitachi's original image enhancement technology that emphasizes shade, sharpness, and gloss to achieve more vivid images. 		●	●	●	●	●	●	●	●													
	HDCR (High Dynamic Contrast Range)	HDCR is Hitachi original technology that produces clear images in bright environments. 		●	●	●	●				●				●									
	3-chip display device	This 3-chip system can project 3-primary-color (Red, Green, Blue) images continuously, and makes images natural with vivid colors.	●					●	●	●	●	●	●	●	●	●	●	●	●	●	●	●	●	
	Dual Color Wheel	Separate color wheels with emphasis on brightness and color that can achieve images to suit the purpose.		●	●	●	●																	
	DICOM® Simulation Mode	Picture mode that achieves a gradation close to the DICOM® standard. * These projectors are not approved medical devices. They should not be used for actual medical diagnosis.	●	●	●	●	●	●	●	●	●	●	●	●	●	●	●	●	●	●	●	●	●	●
	Installability and System Features	Edge Blending	Corrects the shape of images and further overlaps them seamlessly to use multiple projectors to project a single image. 	●	●	●	●	●																
Geometric Correction (Warping)		Corrects the shape of images to make projections on various types of surfaces possible.		●	●	●	●																	
Perfect Fit / Warp		Use the remote controller to adjust the four corners and four sides of a projected image and quickly fix distortions of images. * CP-WU13K supports rotation adjustment. 	● (Warp)	●	●	●	●	●	●	●	●	●	●	●	●	●	●	●	●	●	●	●	●	
Motorized Lens Shift		Lens shift is motorized and can be adjusted on a keypad or remote control.	●	●	●	●	●	●	●	●	●	●	●	●	●	●	●	●	●	●				
Manual Lens Shift		Lens shift can be easily adjusted manually.																			●	●	●	
Interchangeable Lens Options		Significantly increase projection distance with optional interchangeable lenses.	●	●	●	●	●	●	●	●	●	●	●	●	●	●	●	●	●	●	●			
Lens Center		By aligning the center of the projector and the lens, the installation position of the projector is simplified during the design and construction of a facility.		●	●	●	●	●	●	●	●	●	●	●	●	●	●	●	●	●	●			
Picture by Picture	Simultaneously project images from 2 different inputs side-by-side. *1 It enables to display images from 2 different digital inputs (HDMI2 and another) side-by-side. 	●	● *1	● *1	● *1	● *1	● *1	● *1	● *1	● *1	● *1		●	●	● *1				●	●				

Features

			3-Chip DLP®	1-Chip DLP®					3 LCD															
			K series	9000 series					8000 series											5000 series 4000 series				
Model Name			CP-WU13K	CP-X9110 CP-X9111	CP-WX9210 CP-WX9211	CP-WU9410 CP-WU9411	CP-HD9320 CP-HD9321	CP-X8170	CP-WX8265	CP-WU8460	CP-WU8461	CP-X8160	CP-WX8255A	CP-WU8450	CP-WU8451	CP-SX8350	CP-X8150	CP-WX8240A	CP-WU8440	CP-X5022WN	CP-X4022WN	CP-WX4022WN		
Installability and System Features	Picture in Picture	<p>Display an image from a different source in the sub area.</p> <p>*1 It enables display of images from 2 different digital inputs (HDMI2 and another) simultaneously.</p> 	●	● ^{*1}	● ^{*1}	● ^{*1}	● ^{*1}	● ^{*1}	● ^{*1}	● ^{*1}	● ^{*1}				● ^{*1}									
	360 Degree Projection	The projectors can be installed facing upwards, downwards, or other wide degree of vertical orientations.		●	●	●	●	●	●	●	●	●	●	●	●									
	Portrait Projection	You can project images that are vertically long by rotating the installation position of the projector 90 degrees. This feature makes it possible to provide various displays and image representations never before possible.					●																	
	Mechanical Shutter	The shutter blocks the projector light letting you quickly display and hide images while the projector is on.	●	●	●	●	●																	
	Instant Stack	Use 2 projectors by superimposing their images.		●	●	●	●	●	●	●	●	●	●	●	●	●	●	●	●	●	●	●	●	●
	Schedule Setting	<p>Set schedules for projectors to turn them ON or OFF at a set time, or activate other functions.</p> <p>* Available from the OSD menu on 9000 series models only. Set from a computer via a LAN connection.</p> 		●	●	●	●	●	●	●	●	●	●	●	●	●	●	●	●	●	●	●	●	●
Network	Projector Control	Control and manage projectors using a network.	●	●	●	●	●	●	●	●	●	●	●	●	●	●	●	●	●	●	●	●	●	
	Network Presentation	Connect the projectors to a network with a LAN cable and project images from a PC or Mac via the network.		●	●	●	●	●	●	●	●	●	●	●	●	●	●	●	●	●	●	●	●	
	Wireless Capability (Option)	Projectors and computers can be connected via Wi-Fi. Wirelessly project images, and manage and control projectors.		●	●	●	●	●	●	●	●	●	●	●	●	●	●	●	●	●	●	●	●	
	Smart Device Control	Download and install the dedicated free online application "Projector Quick Connection" and wirelessly project images from devices running iOS or Android.		●	●	●	●	●	●	●	●	●	●	●	●	●	●	●	●	●	●	●	●	
	Industry Standard Compatibility	AMX Device Discovery and Creston Roomview are embedded to projectors, providing out of the box compatible industry standard solutions.		●	●	●	●	●	●	●	●	●	●	●	●	●	●	●	●	●	●	●	●	
ECO	Saver Mode	Reduces power consumption by reducing the lamp brightness if the image signal level does not change after a set time (1 to 30 minutes).																		●	●	●		
	Intelligent Eco Mode	Automatically adjusts the output of the lamp to match the image signal. Lamp brightness is reduced for dark images that reduces the power used by the lamp, thus leading to reduced power consumption of projectors.																		●	●	●		
High Reliability and Stability	Hybrid Filter	<p>Hitachi's multi-layer filters reduce the burden of maintenance by extending the period between filter cleaning.</p> 	●	●	●	●	●	●	●	●	●	●	●	●	●	●	●	●	●	●	●	●	●	
	Inorganic LCD	Hitachi 3LCD projectors incorporate three LCD panels with inorganic alignment layers that are extremely light resistant, increasing brightness and contrast ratio. They ensure smooth images and high reliability.						●	●	●	●	●	●	●	●	●	●	●	●	●	●	●	●	
	Status Monitor	A sub-LCD located on the rear panel. It displays the present condition of the projector, including errors, setup information, and error history.		●	●	●	●	●	●	●	●	●	●	●	●									
	Dual Lamp System	By alternating the use of each lamp, the replacement period can be extended twofold. A backup mode is also available, making recovery from a failed lamp fast. This mode immediately switches to the second lamp if the first stops functioning.	●	●	●	●	●																	

Spec

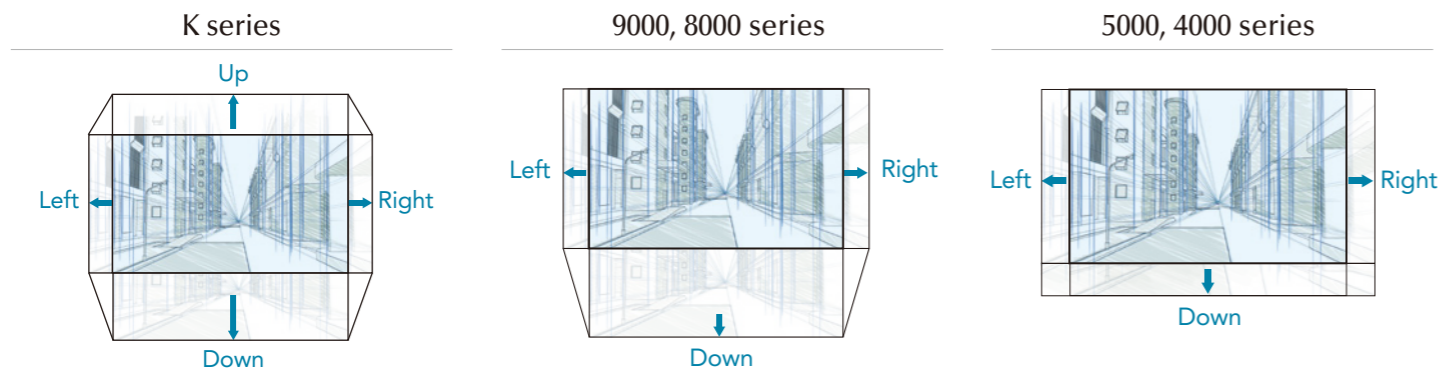
		K series	9000 series				8000 series											5000 series, 4000 series						
Model name		CP-WU13K	CP-X9110 / CP-X9111	CP-WX9210 / CP-WX9211	CP-WU9410 / CP-WU9411	CP-HD9320 / CP-HD9321	CP-X8170	CP-WX8265	CP-WU8460	CP-WU8461	CP-X8160	CP-WX8255A	CP-WU8450	CP-WU8451	CP-SX8350	CP-X8150	CP-WX8240A	CP-WU8440	CP-X5022WN	CP-X4022WN	CP-WX4022WN			
Display system		3-Chip DLP®		1-Chip DLP®				3LCD											3LCD					
Display device	Size of effective display area	0.96" DLP®		0.7" DLP® x 1	0.65" DLP® x 1	0.67" DLP® x 1	0.65" DLP® x 1	0.79" LCD x 3	0.75" LCD x 3	0.76" LCD x 3	0.76" LCD x 3	0.79" LCD x 3	0.75" LCD x 3	0.76" LCD x 3	0.76" LCD x 3	0.79" LCD x 3	0.63" LCD x 3	0.59" LCD x 3	0.76" LCD x 3	0.63" LCD x 3	0.63" LCD x 3	0.59" LCD x 3		
	Number of pixels	2,304,000 pixels		786,432 pixels	1,024,000 pixels	2,304,000 pixels	2,073,600 pixels	786,432 pixels	1,024,000 pixels	2,304,000 pixels	2,304,000 pixels	786,432 pixels	1,024,000 pixels	2,304,000 pixels	2,304,000 pixels	1,470,000 pixels	786,432 pixels	1,024,000 pixels	2,304,000 pixels	786,432 pixels	786,432 pixels	1,024,000 pixels	1,024,000 pixels	
Standard lens		Optional		Optional				2.0x zoom lens (ML-703)											1.5x zoom lens (SL-702)			2.0x zoom lens (ML-703)		
Zoom		Motorized		Motorized				Motorized											Manual			Manual		
Focus		Motorized		Motorized				Motorized											Manual			Manual		
Lens shift		Motorized (V, H)		Motorized (V, H)				Motorized (V, H)											Manual (V, H)			Manual (V, H)		
Light source		465W x 2		370W x 2				365W x 2				365W			330W			245W			245W			
Screen size		80 - 500 inch		50 - 600 inch				30 - 600 inch											30 - 300 inch			30 - 300 inch		
Light output (Brightness)		13,000lm		10,000lm	8,500lm		8,200lm	7,000lm	6,500lm	6,000lm			5,500lm	5,000lm			4,000lm	4,200lm	5,000lm	4,000lm				
Contrast ratio		2,000 : 1 (Dynamic contrast)		2,000 : 1 (Theater mode)	2,500 : 1 (Theater mode)			3,000 : 1 (Presentation mode)			5,000 : 1 (Presentation mode)	3,000 : 1 (Presentation mode)			5,000 : 1 (Presentation mode)	3,000 : 1 (Presentation mode)			3,000 : 1 (Presentation mode)					
Speaker		-		-				-				8W x 2 (stereo)			8W x 2 (stereo)			8W x 2 (mono)						
Terminals																								
COMPUTER IN		Mini D-sub 15-pin connector x 1 / 5BNC connector x 1		Mini D-sub 15-pin connector x 1 / 5BNC connector x 1		Mini D-sub 15-pin connector x 1		Mini D-sub 15-pin connector x 1 / 5BNC connector x 1			Mini D-sub 15-pin connector x 1	Mini D-sub 15-pin connector x 1 / 5BNC connector x 1			Mini D-sub 15-pin connector x 1	Mini D-sub 15-pin connector x 1 / 5BNC connector x 1			Mini D-sub 15-pin connector x 1 / 5BNC connector x 1					
MONITOR OUT		-		Mini D-sub 15-pin connector x 1				Mini D-sub 15-pin connector x 1											Mini D-sub 15-pin connector x 1					
VIDEO		-		BNC connector x 1				RCA connector x 1											RCA connector x 1					
S-VIDEO		-		-				MINI DIN 4-pin connector x 1											MINI DIN 4-pin connector x 1					
COMPONENT VIDEO (Y, Cb/Pb, Cr/Pr)		3BNC x 1 / 3RCA x 1		-				3 RCA connector x 1											3 RCA connector x 1					
HDMI IN		HDMI connector x 2		HDMI connector x 2				HDMI connector x 2											HDMI connector x 1					
DVI-D IN		DVI-D connector x 1		DVI-D connector x 1				-											-					
SDI IN / OUT		BNC connector x 1 / BNC connector x 1		- / -		BNC connector x 1 / -		- / -											- / -					
HDBaseT		-		RJ-45 connector x 1				-				RJ-45 connector x 1	-			RJ-45 connector x 1	-			-				
AUDIO IN		-		-				2 RCA connector x 1 / 3.5mm (stereo) mini connector x 2											2 RCA connector x 1 / 3.5mm (stereo) mini connector x 2					
AUDIO OUT		-		-				2 RCA connector x 1											2 RCA connector x 1					
MIC IN		-		-				-											3.5mm (mono) mini connector x 1					
CONTROL IN (RS-232C)		D-sub 9-pin connector x 1		D-sub 9-pin connector x 1				D-sub 9-pin connector x 1											D-sub 9-pin connector x 1					
CONTROL OUT (RS-232C)		-		-				-											-					
LAN		RJ-45 connector x 1		RJ-45 connector x 1				RJ-45 connector x 1											RJ-45 connector x 1					
USB-A		-		USB type A connector x 1				USB type A connector x 2											USB type A connector x 2					
USB-B		-		-				USB type B connector x 1											USB type B connector x 1					
REMOTE CONTROL IN		-		3.5mm (stereo) mini connector x 1				3.5mm (stereo) mini connector x 1											3.5mm (stereo) mini connector x 1					
REMOTE CONTROL OUT		-		3.5mm (stereo) mini connector x 1				3.5mm (stereo) mini connector x 1											-					
Operating temperature		0 - 40°C at altitude of 0 - 2,590m 0 - 20°C at altitude of 2,590 - 3,048m		0 - 50°C at altitude of 0 - 1,600m ² 0 - 40°C at altitude of 1,600 - 3,048m				0 - 45°C ³ at altitude of 0 - 3,048m											0 - 35°C at altitude of 0 - 3,048m	0 - 40°C at altitude of 0 - 3,048m		5 - 35°C at altitude of 0 - 1,600m 5 - 30°C at altitude of 1,600 - 3,048m		
Operating humidity (RH)		10 - 95% RH (non-condensing)		10 - 80% RH (non-condensing)				10 - 85% RH (non-condensing)											10 - 85% RH (non-condensing)					
Power requirements		AC100 - 130V / AC200 - 240V (50Hz / 60Hz) (SW)		AC110 - 120V / AC220 - 240V (50Hz / 60Hz)				AC100 - 120V / AC220 - 240V (50Hz / 60Hz)											AC100 - 120V / AC220 - 240V (50Hz / 60Hz)					
Maximum power consumption		AC100 - 130V : 1,230W AC200 - 240V : 1,250W		AC110 - 120V : 1,060W AC220 - 240V : 990W				AC100 - 120V : 500W AC220 - 240V : 480W			AC100 - 120V : 550W AC220 - 240V : 520W	AC100 - 120V : 480W AC220 - 240V : 455W		AC100 - 120V : 500W AC220 - 240V : 480W	AC100 - 120V : 480W AC220 - 240V : 455W	AC100 - 120V : 375W AC220 - 240V : 355W			AC100 - 120V : 370W AC220 - 240V : 350W					
Standby mode power consumption		Less than 3W		Less than 0.5W				Less than 0.35W											0.5W					
Standard outside dimensions (W x H x D)		500mm x 270mm x 633mm (19.7" x 10.6" x 24.9") (Excluding lens and protruding parts) 		537mm x 170mm x 438mm (21.1" x 6.7" x 17.2") (Excluding lens and protruding parts) 				498mm x 135mm x 396mm (19.6" x 5.3" x 15.6") (Excluding lens and protruding parts) 											401mm x 103mm x 318mm (15.8" x 4.1" x 12.5") (Excluding protruding parts) 					
Weight		Approx. 34.0kg (74.9lbs.) (Excluding lens)		Approx. 16.6kg (36.6lbs.) (Excluding lens)				Approx. 8.8kg (19.4lbs.)			Approx. 9.2kg (20.3lbs.)	Approx. 8.8kg (19.4lbs.)	Approx. 8.7kg (19.2lbs.)	Approx. 8.8kg (19.4lbs.)	Approx. 9.2kg (20.3lbs.)	Approx. 8.7kg (19.2lbs.)	Approx. 8.4kg (18.5lbs.)	Approx. 8.7kg (19.2lbs.)	Approx. 4.6kg (10.1lbs.)					
Features		Filter cleaning interval ^{*1}		1,000hr				20,000hr											15,000hr			4,000hr		
Accessories		Remote control with batteries, Power cord, RS-232C cable (cross), User manual		Remote control with batteries, Power cord, Computer cable, Adapter cover, Application CD				Remote control with batteries, Power cord, Computer cable, Adapter cover, Lens cover, Application CD											Remote control with batteries, Power cord, Computer cable, Adapter cover, Lens cover, Application CD, Hexagon wrench					

*1 This interval depends on the environment. *2 When the ambient temperature exceeds 45°C, the brightness of the lamp is reduced automatically.

*3 When the ambient temperature exceeds 40°C, the brightness of the lamp is reduced automatically.

Lens Shift (for upside-down installation)

Vertical or horizontal distance from the center of the projected image to the point where the lens axis intersects the screen. The illustrations below show the range of LENS SHIFT when the projector is installed upside down, such as on a ceiling mount.



K series

	FL-K01	FL-K02	SL-K03	ML-K04	LL-K05	UL-K06
CP-WU13K	Left/Right	n/a	0 - ±10%	0 - ±10%	0 - ±10%	0 - ±10%
	Up/Down	n/a	-25 - +50%	-25 - +50%	-25 - +50%	-25 - +50%

9000 series

	USL-901	SL-902	SD-903W SD-903X	ML-904	LL-905	UL-906
CP-X9110 CP-X9111	Left/Right	0 - ±10%	0 - ±10%	0 - ±10%	0 - ±10%	0 - ±10%
	Down	0 - 50%	0 - 55%	0 - 55%	0 - 55%	0 - 55%
CP-WX9210 CP-WX9211	Left/Right	0 - ±10%	0 - ±10%	0 - ±10%	0 - ±10%	0 - ±10%
	Down	0 - 55%	0 - 65%	0 - 65%	0 - 65%	0 - 65%
CP-WU9410 CP-WU9411	Left/Right	0 - ±10%	0 - ±10%	0 - ±10%	0 - ±10%	0 - ±10%
	Down	0 - 50%	0 - 60%	0 - 60%	0 - 60%	0 - 60%
CP-HD9320 CP-HD9321	Left/Right	0 - ±10%	0 - ±10%	0 - ±10%	0 - ±10%	0 - ±10%
	Down	0 - 55%	0 - 65%	0 - 65%	0 - 65%	0 - 65%

8000 series

	FL-701	SL-702	ML-703	LL-704	UL-705
CP-X8170 CP-X8160	Left/Right	0% (Fixed)	0 - ±10%	0 - ±10%	0 - ±10%
	Down	0% (Fixed)	0 - 40%	0 - 50%	0 - 40%
CP-WX8255A CP-WX8265	Left/Right	0% (Fixed)	0 - ±10%	0 - ±10%	0 - ±10%
	Down	0% (Fixed)	0 - 50%	0 - 55%	0 - 50%
CP-WU8460 CP-WU8461 CP-WU8450 CP-WU8451 CP-WU8440	Left/Right	0% (Fixed)	0 - ±10%	0 - ±10%	0 - ±10%
	Down	0% (Fixed)	0 - 50%	0 - 55%	0 - 50%
CP-SX8350	Left/Right	0% (Fixed)	0 - ±10%	0 - ±10%	0 - ±10%
	Down	0% (Fixed)	0 - 40%	0 - 50%	0 - 40%
CP-X8150	Left/Right	0% (Fixed)	0 - ±50%	0 - ±50%	0 - ±50%
	Down	0% (Fixed)	0 - 60%	0 - 60%	0 - 60%
CP-WX8240A	Left/Right	0% (Fixed)	0 - ±50%	0 - ±50%	0 - ±50%
	Down	0% (Fixed)	0 - 75%	0 - 75%	0 - 75%

5000 series, 4000 series

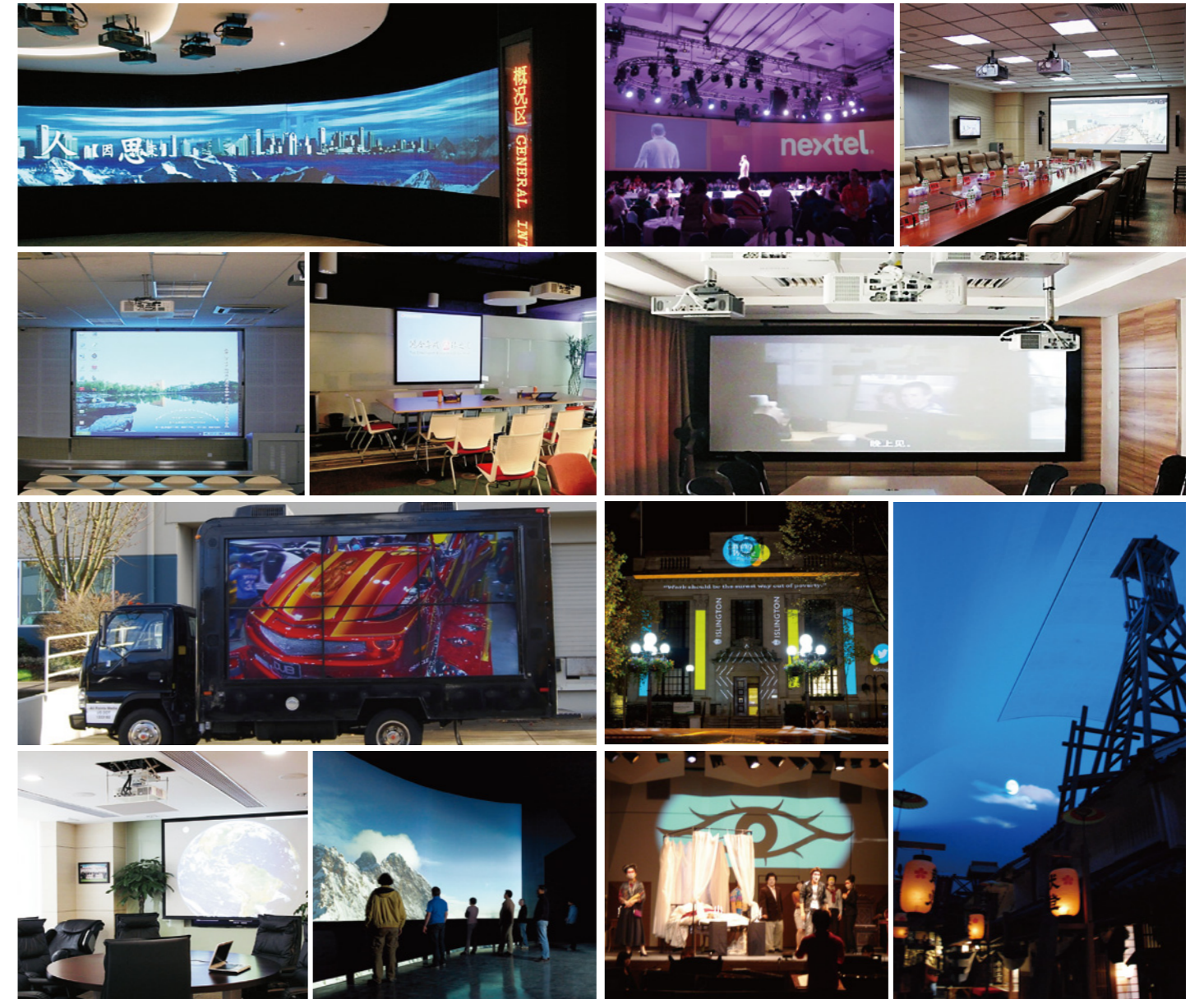
CP-X5022WN	Left/Right	0 - ±5%
CP-X4022WN	Down	30 - 50%
CP-WX4022WN	Left/Right	0 - ±5%
	Down	36 - 60%

Option

	3-Chip DLP®		1-Chip DLP®		3 LCD			
	K series	9000 series	8000 series		5000 series, 4000 series			
Model name	CP-WU13K	CP-X9110/CP-X9111 CP-WX9210/CP-WX9211 CP-WU9410/CP-WU9411	CP-HD9320 CP-HD9321	CP-X8170 CP-WX8265 CP-WU8460 CP-WU8461	CP-X8160 CP-WX8255A CP-WU8450 CP-WU8451	CP-SX8350	CP-X8150 CP-WX8240A	CP-X5022WN CP-X4022WN CP-WX4022WN
Lamp	DT01591	DT01581	DT01731	DT01471	DT01291	DT01281	DT01171 (including a filter unit)	
Filter set	MU08321 (for front), MU08331 (for rear)	UX39551		UX38242	UX38241	MU06642	MU06642	
Lens unit	FL-K01 (Fixed short throw lens) FL-K02 (Fixed short throw lens) SL-K03 (Short throw zoom lens) ML-K04 (Standard zoom lens) LL-K05 (Long throw zoom lens) UL-K06 (Ultra long throw zoom lens)	USL-901 (Ultra short throw lens) SL-902 (Short throw lens) SD-903W (Standard lens for CP-WX9210/CP-WX9211/ CP-WU9410/CP-WU9411/CP-HD9320/CP-HD9321) SD-903X (Standard lens for CP-X9110/CP-X9111) ML-904 (Middle throw lens) LL-905 (Long throw lens) UL-906 (Ultra long throw lens)		FL-701 (Fixed short throw lens) SL-702 (Short throw lens) ML-703 (Middle throw lens) LL-704 (Long throw lens) UL-705 (Ultra long throw lens)				
Mounting accessory	HAS-13K (Bracket for ceiling mount) FS-13K (Frame for stacking)	HAS-9110 (Bracket for fixing mount) HAS-204L (Standard adapter for fixing mount) HAS-304H (Long adapter for fixing mount)	HAS-8150 (Bracket for fixing mount) HAS-204L (Standard adapter for fixing mount) HAS-304H (Long adapter for fixing mount)	HAS-3010 (Bracket for fixing mount) HAS-204L (Standard adapter for fixing mount) HAS-304H (Long adapter for fixing mount)				
USB wireless adapter	-	USB-WL-11N	USB-WL-11N	USB-WL-11N	USB-WL-11N	USB-WL-11N		
Others	-	-	-	-	-	-	RC-R008 (Laser remote control)	

Installation Example

Hitachi projectors are utilized in various ways.



—Design and specifications are subject to change without notice.

- The projected images and comparison photos in this catalog are simulations.
- LCD panels, polarizers and other optical components, and cooling fans may need replacement after prolonged usage. For more details, please consult a Hitachi sales representative.
- Do not use in places where there is a lot of water, dampness, steam, dust, soot, or tobacco smoke. This may result in fire or malfunction.
- Optical components (lamp, LCD panel, polarizing plate, PBS [polarizer beam splitter]) have limited service lives. They must be repaired or replaced if they are used for a long period of time.
- These projectors use a mercury lamp with high internal pressure. Because of its properties, this lamp may burst with a loud noise or burn out if struck or after it has been used for a period of time. The time until it bursts or burns out varies greatly according to differences between lamps and usage conditions. Turning the lamp's power on and off frequently shortens its service life.
- Optical components other than the lamp: If the projector is used for six hours or more per day, they may need to be replaced in less than a year.
- LCD panel: If the projector is used continuously for six hours or more, its replacement cycle may be shortened.
- Do not turn the projector on again for ten minutes after shutdown. Neglect can shorten the lifetime of the lamp. During use and immediately after use, do not touch anywhere near the lamp and the vents as these parts are extremely hot.
- Windows®, Windows Vista®, and Internet Explorer® are trademarks, or registered trademarks of Microsoft Corporation in the United States and/or other countries.
- Mac® is a registered trademark of Apple Inc.
- Pentium® is a trademark of Intel Corporation in the U.S. and/or other countries.
- Crestron® and Crestron RoomView® are registered trademarks of Crestron Electronics, Inc. in the United States and other countries.
- HDMI, the HDMI Logo, and High-Definition Multimedia Interface are trademarks or registered trademarks of HDMI Licensing LLC in the United States and other countries.
- ImageCare is a trademark or a registered trademark of Royal Philips in the United States and other countries.
- DICOM is the registered trademark of the National Electrical Manufacturers Association for its standards publications relating to digital communications of medical information.
- DLP® and the DLP logo are registered trademarks of Texas Instruments.
- HDBaseT™ and the HDBaseT Alliance logo are trademarks of the HDBaseT Alliance.
- All other trademarks are the properties of their respective owners.

