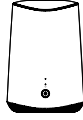


ideacentre  
610S  
Quick Start Guide

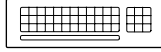
**Lenovo**<sup>™</sup>

# Unpack

Computer



Keyboard\*



Mouse\*



Power adapter



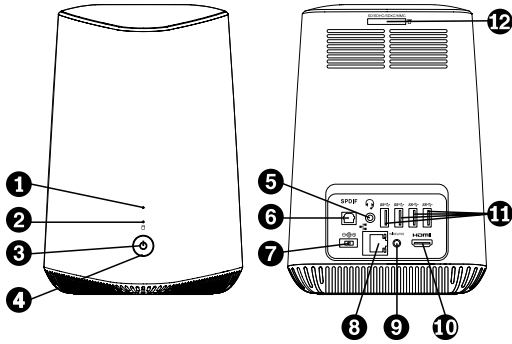
Publications



\* Selected models only

**NOTE:** Some models may contain items not listed here.

# View of the computer



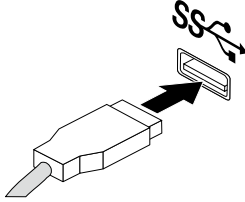
1. Wireless activity indicator
2. Storage drive activity indicator
3. Power indicator
4. Power button
5. Headset connector<sup>1</sup>
6. SPDIF2-out connector
7. Power adapter connector
8. Ethernet connector
9. Wireless reset button
10. HDMI3™-out connector
11. USB4 3.0 connectors (4)
12. Card reader slot

<sup>1</sup> Also known as combo audio jack  
<sup>2</sup> SPDIF: Sony/Philips Digital Interface Format  
<sup>3</sup> HDMI: High-Definition Multimedia Interface  
<sup>4</sup> USB: Universal Serial Bus

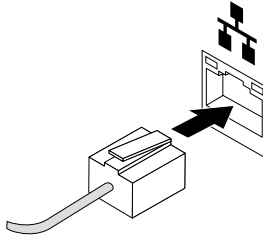
**NOTE:** For the computer models coming without the Lenovo mini projector, the wireless module is not preinstalled so that 1 and 9 do not work.

# Initial setup instructions

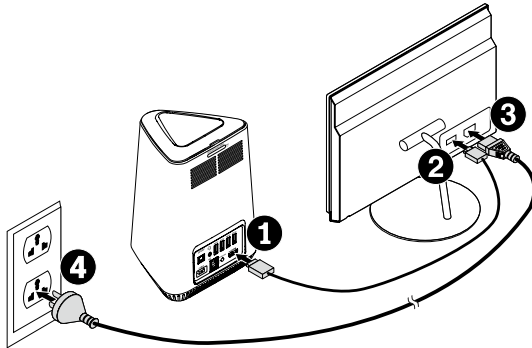
1. Connect the keyboard and the mouse to the computer.



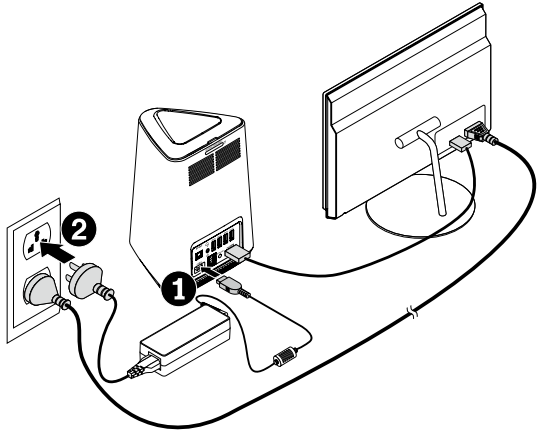
2. If you will be using a wired network connection, connect the Ethernet cable to the Ethernet connector. See “Connecting to the Internet” for additional information.



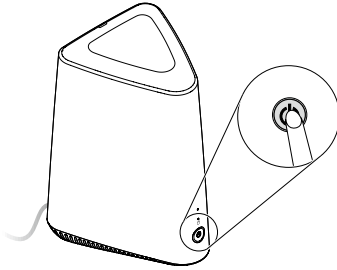
3. Connect the monitor to the computer, and then connect the monitor to an electrical outlet.



4. Connect the computer to an electrical outlet.



5. Turn on the computer and the monitor.



6. Follow the on-screen instructions to complete the setup.

# Connecting to the Internet

You need a contract with an Internet Service Provider (ISP) and some hardware in order to connect to the Internet. ISPs and the services they offer vary by country. Contact your ISP for services available in your country. Your computer supports wireless (selected models only) or wired networks that connect your computer to other devices.

## Wired network connection

For wired networks, connect one end of an Ethernet cable (purchased separately) to the Ethernet connector on your computer, and then connect the other end to the network router or broadband modem. Consult your ISP for detailed setup instructions.

**NOTE:** Broadband modem and router installation procedures vary depending on the manufacturer. Follow the manufacturer's instructions.

## Wireless network connection

For wireless networks, you can use the built-in Wi-Fi antenna to access your wireless home network.

To connect your computer to the wireless network:

Click or tap the network icon on the taskbar, then select the name of your router. Click or tap **Connect**, then follow the steps on the screen.

Test the wireless network by opening your Web browser and accessing any Web site.

# Windows<sup>®</sup> help system

The Windows help system provides you with detailed information about using the Windows operating system.

To access the Windows help system, do the following:

Open the Start menu and then click or tap **Get Started** to get more details.

You can also enter **Get Started** or what you're looking for in the search box on the taskbar. You'll get suggestions and answers to your questions about Windows and the best search results available from your PC and the Internet.

To perform system recovery after a serious error in Windows 10, click or tap the Start button and select **Settings** → **Update & security** → **Recovery**. Then, follow the instructions on the screen for system recovery.

**ATTENTION:** The Windows operating system is provided by Microsoft<sup>®</sup> Corporation. Please use it in accordance with the END USER LICENSE AGREEMENT (EULA) between you and Microsoft. For any question related to the operating system, please contact Microsoft directly.

# Accessing other manuals

- The *Safety, Warranty, Environment, Recycling Information Guide* comes with this manual.
- For the computer models preinstalled with the Windows 10 operating system, the *Important Product Information Guide* has been preloaded onto your computer. To access this manual, do the following:
  1. Open the Start menu and then click or tap **Lenovo Companion**.
  2. Click or tap **Support** → **User Guide**.
- For the computer models that have not been preinstalled with the Windows 10 operating system, download the *Important Product Information Guide*. See “Downloading manuals”.

## Downloading manuals

All latest electronic manuals are available on the Lenovo® Support Web site. To ensure that you have up-to-date information on your computer, download the latest electronic manuals from the following Web site:  
<http://www.lenovo.com/UserManuals>

# Replacing or upgrading hardware

## Customer Replaceable Units (CRUs)

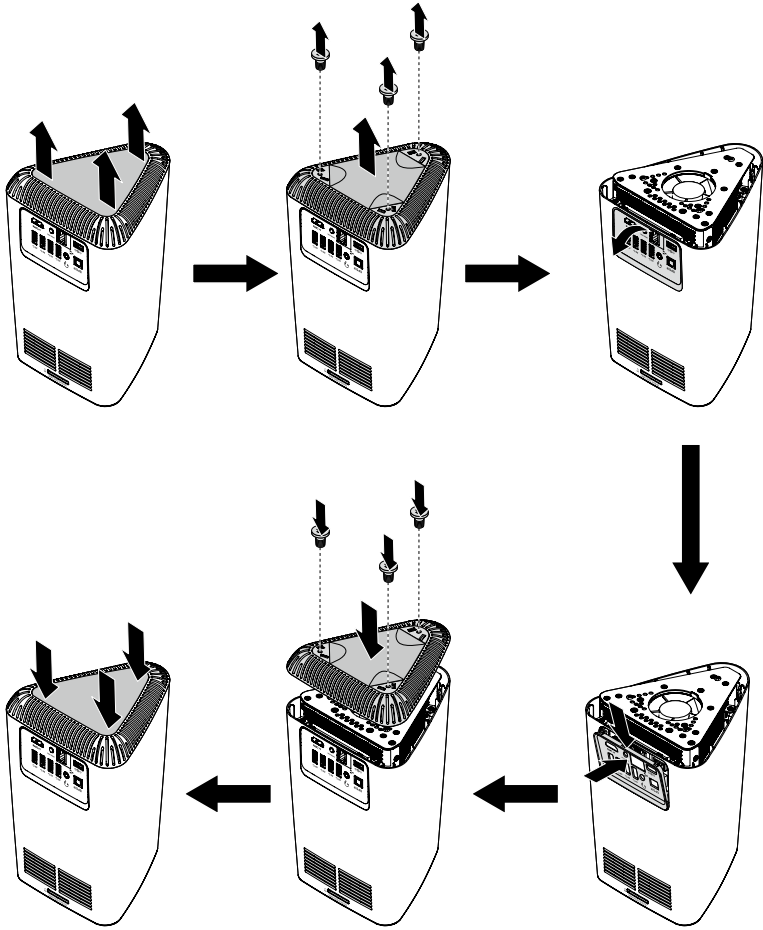
CRUs are parts that can be upgraded or replaced by the customer.

- Bottom cover
- Keyboard
- Mouse
- Power adapter
- Rear input/output cover

## Before replacing or upgrading hardware

1. Do not open your computer or attempt any repair before reading and understanding the “Important safety information” section in the *Safety, Warranty, Environment, Recycling Information Guide* and *Important Product Information Guide*. See “Accessing other manuals” for additional information.
2. Turn off all connected devices and the computer. Then, disconnect all power cords from electrical outlets and disconnect all cables that are connected to the computer.

Replacing the bottom cover and the rear I/O cover





The following information refers to ideacentre® 610S machine type:  
90FC [610S-02ISH / Energy Star]

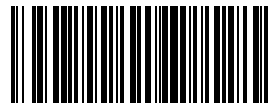
The descriptions in this guide might be different from what you see on your computer, depending on the computer model and configuration.  
Product design and specifications may be changed without notice.

Lenovo, the Lenovo logo and ideacentre are trademarks of Lenovo in the United States, other countries, or both.  
Microsoft and Windows are trademarks of the Microsoft group of companies.  
The terms HDMI and HDMI High-Definition Multimedia Interface are trademarks or registered trademarks of HDMI Licensing LLC in the United States and other countries.  
Other companies, products, or service names may be trademarks or service marks of others.

© Copyright Lenovo 2016. LIMITED AND RESTRICTED RIGHTS NOTICE: If data or software is delivered pursuant to a General Services Administration “GSA” contract, use, reproduction, or disclosure is subject to restrictions set forth in Contract No. GS-35F-05925.

Version 1.0

2016.05



SP40K22543