

Product guide

# Ultimate value for today's enterprise



HP PageWide Enterprise Color MFP 586 series

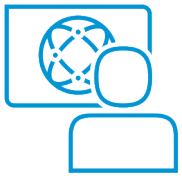
HP PageWide Enterprise Color 556 series



## Table of contents

Unbeatable value, security, and speed for leading enterprises	3
Product walk-around: MFP 586 series	4
Optional paper-handling accessories: MFP 586 series	5
Product comparison: MFP 586 series	5
Product walk-around: 556 series	6
Optional paper-handling accessories: 556 series	7
Product comparison: 556 series	7
Key benefits at a glance	8
Exceptional value, the results you expect	9
Unbeatable productivity for the enterprise	10
Unparalleled fleet security and management	12
Proven, efficient technology	13
Technical specifications	14
Ordering information	20
Appendix A: Control panel features	21

# Unbeatable value, security, and speed for leading enterprises



## HP JetAdvantage

### Business Workflow and Printing Solutions

Streamline crucial business processes and tasks, using powerful HP and partner solutions for printing and imaging. With the latest workflow and productivity tools for efficient fleet management, you can reduce IT workload and costs, boost employee performance, and enable users to print safely—wherever business demands. Learn more at [hp.com/go/printingsolutions](https://hp.com/go/printingsolutions).

Get the ultimate value—these HP PageWide devices deliver the fastest speeds<sup>1</sup> and deepest security<sup>2</sup> for a low color cost per page. Efficient, reliable HP PageWide Technology is engineered to use less energy than lasers.<sup>3</sup> With a maximum input capacity of 2,050 sheets<sup>4</sup> and optional extra-high-yield cartridges,<sup>5</sup> workgroups experience fewer interruptions and stay productive.

## Who can benefit?

These PageWide devices are ideal for workgroups of 5 to 15 users printing 2,000 to 7,500 pages per month, who need professional-quality color documents—without the wait. Accelerate productivity with automatic two-sided printing, an intuitive color touchscreen, and easy mobile printing options.<sup>6</sup> Gigabit Ethernet and wireless printing options help your team stay connected.<sup>7</sup> Centralize control of your printing environment with HP Web Jetadmin.<sup>8</sup> And as your organization's needs change, extensibility options enable you to easily upgrade or add new features. Choose the Flow MFP 586z model for additional workflow features like a pull-out keyboard for smooth data entry and advanced scanning and routing options.



# Product walk-around: MFP 586 series

- 1 100-sheet automatic document feeder (ADF) with single-pass, two-sided scanning; 586z model also includes HP EveryPage
- 2 9.0-inch (22.8 cm) functional touchscreen with 8.0-inch (20.3 cm) Color Graphics Display
- 3 Flatbed scanner handles up to 8.5 x 14 in (216 by 356 mm) paper
- 4 Hardware integration pocket<sup>9</sup> for solution integration
- 5 Easy-access USB port to save and print files directly
- 6 Pull-out keyboard for easy, accurate data entry (586z model only)
- 7 Front door access to ink cartridges
- 8 Built-in automatic two-sided printing
- 9 50-sheet multipurpose tray 1
- 10 500-sheet input tray 2
- 11 300-sheet output bin
- 12 HP High-Performance Secure Hard Disk
- 13 Fax port
- 14 Slot for cable-type security lock
- 15 Hi-Speed USB 2.0 printing port
- 16 Built-in Gigabit Ethernet
- 17 USB port for connecting external USB devices



Front view

Rear I/O panel close-up

## Series at a glance



Model (product number)	MFP 586dn (G1W39A)	MFP 586f (G1W40A)	Flow MFP 586z (G1W41A)
50-sheet multipurpose tray 1; 500-sheet tray 2	✓	✓	✓
1x500-sheet paper tray	Optional	Optional	Optional
3x500-sheet paper tray and stand	Optional	Optional	Optional
Printer cabinet and stand	Optional	Optional	Optional
HP High-Performance Secure Hard Disk	✓	✓	✓
Scan speed (single-pass, two-sided, letter/A4) <sup>10,11</sup>	Up to 46/44 images per minute (ipm), black; up to 42/40 ipm, color	Up to 46/44 ipm, black; up to 42/40 ipm, color	Up to 74/70 ipm, black and color
Wireless direct printing <sup>12</sup> /NFC <sup>13</sup>	Optional	Optional	Optional
Fax	Optional	✓	✓
Advanced workflow features, including pull-out keyboard and HP EveryPage	Not available	Not available	✓

## Optional paper-handling accessories: MFP 586 series



MFP; 1x500 sheet feeder (G1W43)



MFP; single cabinet/stand (G1W44A)



MFP; 1x500 feeder tray 3 (G1W43); cabinet/stand (G1W44)



MFP; 3x500 feeder/stand (G1W45A)

## Product comparison: MFP 586 series

The following table compares the new HP PageWide Enterprise Color Flow MFP 586z with the HP Officejet Enterprise Color Flow MFP X585z.



HP PageWide Enterprise Color Flow MFP 586z	HP Officejet Enterprise Color Flow MFP X585z	Benefits
Best-in-class print speed <sup>1</sup> (black and color, letter and A4): up to 50 pages per minute (ppm) <sup>14</sup>	Print speed (black and color): up to 44/42 ppm (letter/A4) <sup>14</sup>	Save time with up to 14% faster print speed, Professional mode
First page out (FPO) from ready as fast as 7.1/7.3 seconds (black/color) <sup>15</sup>	FPO from ready as fast as 8 seconds <sup>15</sup>	Wait less, do more—up to 13% faster FPO (black) and up to 10% faster FPO (color)
HP Sure Start, whitelisting, run-time intrusion detection, and HP Connection Inspector	HP Sure Start not available Whitelisting, run-time intrusion detection, and HP Connection Inspector available with firmware upgrade	Key security technologies designed to thwart attackers' efforts and self-heal
Maximum input capacity: 2,050 sheets <sup>4</sup>	Maximum input capacity: 1,050 sheets <sup>4</sup>	Meet high-volume demands—up to 95% more input capacity
Ink cartridge options: <ul style="list-style-type: none"> <li>Standard (A): 6,000 pages (black and color)<sup>16</sup></li> <li>High-yield (X): 11,000/10,000 pages (black/color)<sup>5</sup></li> <li>Extra-high-yield (Y): 20,000/16,000 pages (black/color)<sup>5</sup></li> </ul>	Standard (A): 10,000/6,600 pages (black/color) <sup>17</sup>	Less intervention—up to 100% more black pages and up to 142% more color pages
Typical Electricity Consumption (TEC): 1.877 kWh/Week	TEC: 2.8 kWh/Week	Save resources with up to 49% lower TEC

# Product walk-around: 556 series

- 1 Intuitive 4.3-inch (10.9 cm) pivoting color touchscreen
- 2 Hardware integration pocket<sup>9</sup> for solution integration
- 3 Easy-access USB port to save and print files directly
- 4 Front door access to ink cartridges
- 5 50-sheet multipurpose tray 1
- 6 Built-in automatic two-sided printing
- 7 500-sheet input tray 2
- 8 500-sheet input tray 3 (standard on 556xh, optional on 556dn)
- 9 300-sheet output bin
- 10 Slot for cable-type security lock
- 11 HP High-Performance Secure Hard Disk (556xh model only)
- 12 Hi-Speed USB 2.0 printing port
- 13 Built-in Gigabit Ethernet
- 14 USB port for connecting external USB devices



## Series at a glance



Model	556dn	556xh
Product number	G1W46A	G1W47A
50-sheet multipurpose tray 1; 500-sheet tray 2	✓	✓
1x500-sheet tray 3	Optional	✓
3x500-sheet paper tray and stand	Optional	Optional (after removing Tray 3 included with printer)
Printer cabinet and stand	Optional	Optional
HP High-Performance Secure Hard Disk	Not available	✓
Wireless direct printing <sup>12</sup> /NFC <sup>13</sup>	Optional	✓

## Optional paper-handling accessories: 556 series



556dn printer; 1x500 sheet feeder (G1W43)



556dn printer; single cabinet/stand (G1W44A)



556dn printer; 1x500 feeder tray 3 (G1W43) and cabinet/stand (G1W44)



556dn printer; 3x500 feeder/stand (G1W45A)



556xh printer; single cabinet/stand (G1W44A)

## Product comparison: 556 series

The following table compares the new HP PageWide Enterprise Color 556xh with the HP Officejet Enterprise Color X555xh.



HP PageWide Enterprise Color 556xh	HP Officejet Enterprise Color X555xh	Benefits
Best-in-class print speed <sup>1</sup> (black and color, letter and A4): up to 50 ppm <sup>14</sup>	Print speed (black and color): up to 44/42 ppm (letter/A4) <sup>14</sup>	Save time with up to 14% faster print speed, Professional mode
HP Sure Start, whitelisting, run-time intrusion detection, and HP Connection Inspector	HP Sure Start not available Whitelisting, run-time intrusion detection and HP Connection Inspector available with firmware upgrade	Key security technologies designed to thwart attackers' efforts and self-heal
Maximum input capacity: 2,050 sheets <sup>4</sup>	Maximum input capacity: 1,050 sheets <sup>4</sup>	Meet high-volume demands—up to 95% more input capacity
Ink cartridge options: <ul style="list-style-type: none"> <li>Standard (A): 6,000 pages (black and color)<sup>16</sup></li> <li>High-yield (X): 11,000/10,000 pages (black/color)<sup>5</sup></li> <li>Extra-high-yield (Y): 20,000/16,000 pages (black/color)<sup>5</sup></li> </ul>	Standard (A): 10,000/6,600 pages (black/color) <sup>17</sup>	Less intervention—up to 100% more black pages and up to 142% more color pages
TEC: 1.585 kWh/Week	TEC: 2.1 kWh/Week	Save resources with up to 32% lower TEC

## Key benefits at a glance

Power office productivity and simplify tasks with PageWide devices that offer enterprise-level features and functionality. Proven PageWide Technology delivers fast speeds so you don't have to wait. Designed to use less energy than lasers,<sup>3</sup> so you can conserve energy without sacrificing quality or reliability.



### Exceptional value, the results you expect

- Get the professional-quality color you need from a device that delivers a low color cost per page.
- Rely on Original HP PageWide cartridges to deliver durable prints that last.
- Print more pages, with fewer interruptions using optional Original HP PageWide high-yield or extra-high-yield cartridges.<sup>5</sup>
- Spend less time and budget on maintenance with streamlined HP PageWide Technology.<sup>18</sup>



### Unbeatable productivity for the enterprise

- Save time with best-in-class print speeds<sup>1</sup>—up to 75 ppm (General Office mode) in color and black-and-white.
- Grab the documents you need and go—the first page prints in as fast as 7.1/7.3 seconds (black/color).<sup>15</sup>
- Meet high-volume demands with an optional maximum paper capacity of up to 2,050 sheets.<sup>4</sup>
- Easily access, print, and share resources with Gigabit Ethernet and optional wireless networking.<sup>7</sup>
- Get fast, two-sided scanning with an MFP that captures both sides of the page at once (MFP 586 series).<sup>11</sup>
- Streamline workflows by selecting the Flow MFP 586z—includes integrated keyboard, HP EveryPage, built-in Optical Character Recognition (OCR),<sup>19</sup> and more.



### Unparalleled fleet security and management

- Gain peace of mind with embedded security settings (250+ for MFP 586 series and 100+ for 556 series)<sup>20</sup>—including HP Sure Start, whitelisting, run-time intrusion detection, and HP Connection Inspector that detect security threats and heal your device.
- Centrally monitor and control your printing environment with HP Web Jetadmin.<sup>8</sup>
- Give workgroups what they need to succeed. Easily choose and deploy over 175 HP and third-party solutions.
- Employ policy-based, fleet-wide protection, using optional HP JetAdvantage Security Manager.<sup>21</sup>



### Proven, efficient technology

- Minimize interruptions and downtime with HP PageWide Technology that delivers the reliable performance businesses demand.
- Keep productivity up and energy use down with an efficient printer or MFP designed to use less energy than lasers.<sup>3</sup>



# Exceptional value, the results you expect



Count on exceptional value and the results enterprises need to stay ahead. These PageWide devices are engineered to produce professional-quality color documents for a low color cost per page.



## Keep productivity up and costs down

Depend on unbeatable lasting value and keep your budget in check. Produce high-impact color documents with an efficient, reliable device that delivers a low color cost per page.



## Professional-quality color and black text

Produce vibrant color and sharp, black text that's perfect for office use. Reliably print reports, memos, emails, and other business documents on a variety of papers.

Improve the quality of your printed documents by choosing papers with ColorLok® Technology. Colors are brighter, producing rich, vivid images and graphics. Blacks are bolder to improve contrast and sharpen text.<sup>22</sup>



## Durable prints that last

Rely on Original HP PageWide cartridges to deliver durable documents that stand up to highlighters and resist water, smearing, and fading.<sup>23</sup>



## Affordable, high-volume printing

Print longer and spend less time replacing cartridges with optional Original HP PageWide cartridges:

- Extra-high-yield cartridges let you print up to 20,000 black pages and 16,000 color pages—more than 2.5 times as many pages as standard cartridges, before replacing them.<sup>5</sup>
- High-yield cartridges let you print up to 11,000 black pages and 10,000 color pages—about 40% more pages than standard cartridges—before replacing them.<sup>5</sup>



## Spend less on maintenance

Minimize the time and budget spent on scheduled printer maintenance—streamlined HP PageWide Technology requires fewer replaceable parts than most laser printers.<sup>18</sup>

# Unbeatable productivity for the enterprise



Elevate workgroup productivity with best-in-class print speeds.<sup>1</sup> With the first page printing in as fast as 7.1 seconds (black),<sup>15</sup> your team will accomplish more. The MFP 586 series offers fast single-pass two-sided scanning. Scan documents directly to email, USB, and network folders.<sup>11</sup> For more advanced workflow capabilities, select the Flow MFP 586z.



## Best-in-class print speeds<sup>1</sup>

Spend less time waiting and accomplish more. HP PageWide Technology delivers best-in-class print speeds<sup>1</sup>—up to 75 ppm (General Office mode)—for both color and black.

Grab the documents you need and go. These PageWide devices print the first page in as fast as 7.1/7.3 seconds (black/color),<sup>15</sup> so documents are ready right when you need them.



## Meet high-volume demands

Expand your capacity and let large print jobs handle themselves. These devices have an optional maximum paper capacity of up to 2,050 sheets to meet high-volume demands without having to stop and add paper.<sup>4</sup>



## Print directly from mobile devices—no network needed

Use optional, 128-bit encrypted wireless direct printing<sup>12</sup> (standard, 556xh model only) to help keep data secure in transit and at rest—without accessing the company network—using smartphones, tablets, and notebook PCs. Automatically discover the nearest printer and save time. Add the option to print with just a touch of your NFC-enabled<sup>13</sup> smartphone or tablet to these PageWide devices (standard, 556xh model).

There's no need to search through a long list of devices—or connect to the network.

If you're looking to deploy mobile printing across a printer fleet, HP offers server-based solutions that provide secure pull-printing, as well as advanced management and reporting capabilities.<sup>24</sup> HP also provides options to integrate with third-party mobile device management solutions. Learn more at [hp.com/go/businessmobileprinting](http://hp.com/go/businessmobileprinting).



## Extend your printing reach

Keep your office connected. Built-in Gigabit Ethernet and optional wireless connectivity let you share printing resources on a network.<sup>7</sup>



## Simplify tasks with a touch

Make everyday printing more efficient. Equip employees to breeze through tasks and enter PIN numbers at the 4.3-inch (10.9 cm) color touchscreen on the 556 series.

Relevant Online Help gives clear instructions, illustrations, and animations.

The 9.0-inch (22.8 cm) functional touchscreen with 8.0-inch (20.3 cm) Color Graphics Display on the MFP 586 series tilts up for easy viewing by all users. It offers:

- Image preview, which lets you add, delete, reorder, and zoom in on pages.
- Menus that allow you to set system defaults, customize job settings, and launch HP Quick Sets.
- Localized virtual keyboards.

For more details, see Appendix A, “Control panel features,” on page 21.



### Get more done, faster, with advanced workflow features

In addition to the standard workflow features, the Flow MFP 586z model includes the following enhancements:

- Faster scan speeds; two-sided scanning projects are done in a flash—up to 74 ipm<sup>10</sup>
- HP EveryPage Technology, which helps capture every page and detect potential errors or missed pages on the spot—even when the weight, size, or condition of pages vary
- An extended life ADF, with up to 13,900-page recommended monthly scan volume
- A large pull-out keyboard for faster, more accurate data entry
- Built-in optical character recognition (OCR), for editable and searchable scans<sup>19</sup>
- Auto-orientation, auto-page-crop, and auto-tone (for contrast, brightness, and background removal of each page)
- Send to Microsoft® SharePoint®<sup>11</sup>



### Fast single-pass two-sided scanning<sup>11</sup>

The MFP 586 series enables you to scan stacks of paper files fast—up to 46 ipm (586dn/f) and up to 74 ipm (586z)<sup>10</sup>—with two-sided scanning that captures both sides of the page at once. With the ADF, you can automatically:

- Detect and remove blank pages from scanned documents, reducing file size
- Deskew sheets that are not inserted quite straight
- Determine the best output format and exposure for the data content
- Classify input original as either color or non-color

Job build allows you to scan additional items on the glass and insert them into the scanned file wherever you decide—before hitting “Send.”



### Use multiple functions at once

The MFP 586 series allows you to queue jobs, embed solutions, and use multiple functions at once—scan, copy, and fax<sup>25</sup> while someone else is printing. Queue the next fax job before the first has completed sending.



### Scan and send right to your destination<sup>11</sup>

Easily integrate paper documents into the digital workflow—send scanned documents from the MFP 586 series directly to a variety of destinations like email recipients, network folders, or LAN fax addresses, with no need for middleware.<sup>11</sup> Built-in LDAP addressing simplifies email distribution.

The Send-to-Email Default Setup Wizard and the Save-to-Folder Quick Set Wizard help you quickly and easily configure your HP MFP's digital sending features.



### Make copies and send faxes with ease

The MFP 586 series may be used as a standalone, walk-up copier. Place your originals on the scanner glass or use the automatic document feeder and adjust all copy settings at the control panel.

Quickly and easily send and receive faxes using the control panel icon (standard on the 586f/z models).<sup>25</sup>

## Optional HP JetAdvantage Workflow Solutions

### HP Capture and Route

#### Capture, manage, and store all your information

HP Capture and Route is a scalable solution that makes it easy for your team to control and track scanned content and distribute documents with the touch of a button to back-office applications, fax lines, online destinations such as Microsoft SharePoint and Autonomy iManage, as well as cloud-based repositories.

To learn more, visit [hp.com/go/captureandroute](http://hp.com/go/captureandroute).

### HP Digital Sending Software

#### Streamline document handling with a server-based solution

Maximize return on your IT investment with a capture and send software that leverages existing IT infrastructure and uses a common administrative utility and end-user interface, so you can use it across multiple HP devices and device types.

To learn more, visit [hp.com/go/dss](http://hp.com/go/dss).

### HP and Partner solutions

#### Get more from your devices with efficient, intuitive workflow solutions

HP JetAdvantage Partner solutions offer simple capture programs to sophisticated workflow automation. Current partners providing workflow solutions are Ephesoft Transact, Fenestrae Udocx, Genius Bytes GeniusMFP, Hyland OnBase, Kofax AutoStore, and YSoft SafeQ.

To learn more, visit [hp.com/go/qsc](http://hp.com/go/qsc).

# Unparalleled fleet security and management



Count on strong protection for devices, data, and documents with the deepest embedded printer security from HP,<sup>2</sup> and centrally manage your entire fleet with ease.

## Security

HP JetAdvantage Security Solutions:

- Web site: [hp.com/go/printsecurity](http://hp.com/go/printsecurity)
- Solution brief: <http://h20195.www2.hp.com/V2/GetPDF.aspx/4AA3-1295ENW.pdf>
- Video: <http://hp.brightcovegallery.com/products/detail/video/4270905124001/>

## HP JetAdvantage Security Manager:<sup>21</sup>

- Web site: [hp.com/go/securitymanager](http://hp.com/go/securitymanager)
- Brochure: <http://h20195.www2.hp.com/V2/GetPDF.aspx/4AA3-9275ENW.pdf>
- Video: <http://hp.brightcovegallery.com/products/detail/video/4270837770001/>

## Fleet management

HP Web Jetadmin:<sup>9</sup>

- Web site: [hp.com/go/wia](http://hp.com/go/wia)
- Solution brief: <http://h20195.www2.hp.com/V2/GetPDF.aspx/4AA5-2718ENW.pdf>
- Video: <http://hp.brightcovegallery.com/solutions/detail/video/4271055504001/>

## HP Universal Print Driver:<sup>27</sup>

- Web site: [hp.com/go/upd](http://hp.com/go/upd)
- Solution brief: <http://h20195.www2.hp.com/V2/GetPDF.aspx/4AA2-4781ENW>



## Built-in security for greater protection

Gain peace of mind with multi-level, built-in security features that detect threats and heal your device. HP Sure Start validates the integrity of the BIOS code, whitelisting ensures only authentic, known-good HP code is loaded into memory, run-time intrusion detection detects anomalies during complex firmware and memory operations, and HP Connection Inspector checks your device's outgoing network connections to stop suspicious requests and thwart malware. Each feature automatically triggers a reboot if attacked.

Plus, the MFP 586 series comes with more than 250 embedded security settings (more than 100 for the 556 series) to help safeguard your sensitive business information.<sup>20</sup>



## Opt for tighter security

Further safeguard information in transit over the network and stored on the device—keys, passwords, certificates and more—using the encrypted HP High-Performance Secure Hard Disk (MFP 586 series and 556xh model) and optional HP Trusted Platform Module.<sup>26</sup>



## Upgrade your memory to store and protect large files

Equip your printer to handle larger files. Choose the optional 1 GB memory upgrade and easily store sizable print jobs—and help keep them protected.



## Expand the capabilities of your device

Do more with your investment and give workgroups tools for success. Choose from various interfaces and up to 180 HP and third-party solutions that leverage the HP Open Extensibility Platform available through the HP JetAdvantage partner program. Add features like card readers and more through the Hardware Integration Pocket.<sup>9</sup>



## Streamline fleet management

Centralize control of your printing and imaging environment with HP Web JetAdmin.<sup>9</sup> Easily add new devices and solutions, update features, and apply corporate policies to help build business efficiency.

The HP Universal Print Driver (UPD) is the single driver that gives users instant access to a range of HP print devices without downloading separate drivers.<sup>27</sup>

Optional HP JetAdvantage Security Manager offers an effective, policy-based approach to help secure HP printing and imaging devices.<sup>21</sup>

## Proven, efficient technology



Minimize interruptions and downtime with efficient, reliable performance. Conserve resources with a device designed to use less energy than lasers.<sup>3</sup> HP PageWide Technology is ideal for today's busy office.



### Proven, reliable technology

Avoid snags in your workflow. HP PageWide Technology was designed to minimize workgroup interruptions and downtime while delivering fast, reliable results—for proven performance businesses demand.

Printers with HP PageWide Technology are designed and built to be robust. They provide easy maintenance and support high-volume printing. HP PageWide Enterprise 556 and MFP 586 series have a recommended monthly page volume of up to 7,500 pages.<sup>28</sup>

HP PageWide Technology is the secret behind the exceptional speed and reliability of these devices. The printhead spans the entire width of the paper, enabling single-pass printing at incredibly fast speeds. This is the same HP PageWide Technology found in top-end digital presses.

The printhead contains a massive number of tiny ink ejectors—over 42,000 of them positioned to span across the width of the page. As the paper passes under the printhead, ejectors release a minute drop of black or color ink at precisely the right location to form the printed image—providing you with the professional-quality color documents your business needs.



### Less energy use than lasers<sup>3</sup>

Help keep productivity up and energy use down. This efficient device is designed to use less energy than devices in its class.<sup>3</sup>

These PageWide devices are ENERGY STAR® certified and lead the competition in energy efficiency.<sup>3</sup> Help cut costs with HP Auto-Off Technology<sup>29</sup>—intelligence that turns the device off when you don't need it.



### Highest yields, fewest interruptions<sup>5</sup>

Print up to 16,000 color pages and up to 20,000 black-and-white pages from a single extra-high-yield cartridge—and go longer between replacements than standard cartridges.<sup>5</sup> Original HP PageWide extra-high-yield cartridges let you print again and again—without interruption.



### Cartridges designed for your printer

Get professional-quality color documents and the performance you expect. Only Original HP PageWide cartridges are specially designed and precisely engineered for HP printers and MFPs—so you can count on fast, consistent results.

# Technical specifications

	HP PageWide Enterprise Color 556dn	HP PageWide Enterprise Color 556xh	HP PageWide Enterprise Color MFP 586dn	HP PageWide Enterprise Color MFP 586f	HP PageWide Enterprise Color Flow MFP 586z
<b>Product number</b>	G1W46A	G1W47A	G1W39A	G1W40A	G1W41A
<b>Control panel/data entry</b>	4.3-inch (10.9 cm) color touchscreen with adjustable angle display; illuminated Home button		9.0-inch (22.8 cm) functional touchscreen with 8.0-inch (20.3 cm) Color Graphics Display; illuminated Home button		Plus: pull-out keyboard
<b>Print speed (letter and A4)<sup>14</sup></b>					
<i>Single-sided</i>	Black and color: up to 50 ppm, Professional mode; up to 75 ppm, General Office mode				
<i>Two-sided</i>	Black and color: up to 25 ipm, Professional mode; up to 38 ipm, General Office mode				
<b>First page out (letter and A4)<sup>15</sup></b>	From ready: as fast as 7.1/7.3 seconds, black/color ( <i>all models</i> ) From sleep: as fast as 14/15 seconds, black/color ( <i>all models</i> )				
<b>Print resolution</b>					
<i>Black</i>	Up to 1200 x 1200 optimized dpi from 600 x 600 input dpi (on ColorLok, Plain, HP Premium Inkjet Presentation Matte, and HP Inkjet Brochure Matte)				
<i>Color</i>	Up to 2400 x 1200 optimized dpi from 600 x 600 input dpi (on HP Advanced Photo Papers)				
<b>Print features</b>	HP PageWide Technology with pigmented inks, print preview, print multiple pages per sheet (2, 4, 6, 9, 16), collation, watermarks, store print jobs, job separator, print from easy-access USB: PDF, PS, print-ready files (.prn, .pcl, .cht)				
<b>Scan features</b>					
<i>Simplex scan speed<sup>10</sup></i>	Scanning not available		Black: up to 46 ipm, letter (up to 44 ipm, A4) Color: up to 42 ipm, letter (up to 40 ipm, A4)		Black and color: up to 47 ipm, letter (up to 45 ipm, A4)
<i>Two-sided scan speed<sup>10</sup></i>			Black: up to 46 ipm, letter (up to 44 ipm, A4) Color: up to 42 ipm, letter (up to 40 ipm, A4)		Black and color: up to 74 ipm, letter (up to 70 ipm, A4)
<i>Scan type and size</i>	Flatbed: 8.5 x 14 in (216 x 356 mm) maximum; no minimum ADF: 8.5 x 14 in (216 x 356 mm) maximum; 4.1 x 5 in (105 x 127 mm) minimum				
<i>Scan resolution/bit depth</i>	Up to 600 x 600 dpi; 24-bit; grayscale levels: 256				
<i>TWAIN version</i>	Version 2.1				
<i>Scan input modes</i>	Front panel applications: Copy, Email, Fax, Save to Network Folder, Save to USB, Save to Device Memory, Open Extensibility Platform (OXF) applications				
	Plus: Save to SharePoint				

	HP PageWide Enterprise Color 556dn	HP PageWide Enterprise Color 556xh	HP PageWide Enterprise Color MFP 586dn	HP PageWide Enterprise Color MFP 586f	HP PageWide Enterprise Color Flow MFP 586z
<b>Digital sending</b>			Scan to Email, Save to Network Folder, Save to USB drive, Send to FTP, Send to Internet Fax, Local Address Book, SMTP over SSL, blank page removal, edge erase, auto color sense, auto crop to content, compact PDF		
				Plus: Send to LAN Fax	Plus: Send to LAN Fax, Send to SharePoint, auto tonescale, auto orientation, multi-pick detect, auto straighten, auto crop-to-page, OCR
<b>Scan file formats</b>			Digital send, scan to easy-access USB: PDF, JPEG, TIFF, MTIFF, XPS, PDF/A		
			Plus: TEXT (OCR), Unicode TEXT (OCR), RTF (OCR), Searchable PDF (OCR), Searchable PDF/A (OCR), HTML (OCR), CSV (OCR)		
<b>Scanner smart software</b>			Optimize text/picture, Image adjustments, Job build, Output quality setting, Selectable scan resolution 75 to 600 dpi, Auto detect color, Edge Erase, Job notification, Blank page suppression, HP Quick Sets		
			Plus: HP EveryPage		
<b>Copy features</b>					
<b>Copy resolution</b>	Copying not available		Black text and graphics: up to 600 x 600 dpi (flatbed), 450 x 600 dpi (ADF) Color text and graphics: up to 600 x 600 dpi (flatbed), 300 x 600 dpi (ADF)		
<b>ADF copy speed<sup>30</sup></b>			Up to 50 copies per minute (cpm), letter and A4 (laser comparable) First copy out: as fast as 7/9 seconds (black/color), letter and A4		
<b>Copier smart software</b>			Auto scale, reduce/enlarge from scanner glass (25 to 400 percent), collate, auto color detection, two-sided copying, image adjustments (darkness, background cleanup, sharpness), job build		
<b>Copier settings</b>			Up to 9,999 copies, two-sided copying, scalability, image adjustments (darkness, contrast, background cleanup, sharpness), N-up, N or Z-ordering, content orientation, collation, booklet, ID Scan, job build, edge-to-edge, job storage		
<b>Fax features</b>					
<b>Fax resolution</b>	Faxing not available		Black (standard): 204 x 98 dpi, black-and-white (fine): 204 x 196 dpi, black (photo grayscale and best): up to 300 x 300 dpi (400 x 400 dpi for received faxes only)		
<b>Fax speed<sup>31</sup></b>			Up to 33.6 kbps		
<b>Fax settings</b>			Auto fax reduction (fit to letter or A4), auto-redialing, two-sided faxing, broadcasting up to 210 locations, fax forwarding, speed dialing up to 1000 numbers (each with 210 destinations) storable in memory, fax polling supported (receive only), junk barrier, PC interface		
<b>Processor</b>	1.2 GHz ( <i>all models</i> )				
<b>Memory</b>	1280 MB standard, 2304 MB maximum; upgradeable with 1 GB DIMM (1 slot, 144-pin DDR3 DIMM)		2048 MB standard, 2816 MB maximum; upgradeable with 1 GB DIMM (1 slot, 144-pin DDR3 DIMM)		

	HP PageWide Enterprise Color 556dn	HP PageWide Enterprise Color 556xh	HP PageWide Enterprise Color MFP 586dn	HP PageWide Enterprise Color MFP 586f	HP PageWide Enterprise Color Flow MFP 586z
<b>Hard disk</b>	Not available	Standard, embedded HP High-Performance Secure Hard Disk, minimum 500 GB; AES 256 hardware encryption or greater; Secure erase capabilities (Secure File Erase-Temporary Job Files, Secure Erase-Job Data, Secure ATA Erase-Disk)			U.S. Government: Standard, FIPS 140-2 validated hard disk, minimum 500 GB
<b>Durability ratings</b>					
<i>RMPV (recommended monthly page volume)<sup>28</sup></i>	2,000 pages to as high as 7,500 pages ( <i>all models</i> )				
<i>RMSV (recommended monthly scan volume)<sup>32</sup></i>				4,150 pages to as high as 6,900 pages	8,350 pages to as high as 13,900 pages
<i>Duty cycle<sup>33</sup></i>	Up to 80,000 pages ( <i>all models</i> )				
<b>Media specifications</b>					
<i>Input capacity</i>	Standard: up to 550 sheets; Maximum: up to 2,050 sheets <sup>4</sup> Tray 1: up to 50 sheets; Tray 2: up to 500 sheets	Standard: up to 1,050 sheets; Maximum: up to 2,050 sheets <sup>4</sup> Tray 1: up to 50 sheets; Trays 2 and 3: up to 500 sheets each	Standard: up to 550 sheets; Maximum: up to 2,050 sheets <sup>4</sup> Tray 1: up to 50 sheets; Tray 2: up to 500 sheets		
			ADF: 100 sheets		
<i>Output capacity</i>	Up to 300 sheets ( <i>all models</i> )				
<i>Two-sided printing</i>	Automatic ( <i>all models</i> )				
<i>Media sizes</i>	Tray 1: Letter, legal, oficio, statement, executive, 3 x 5 in, 4 x 6 in, 5 x 7 in, 5 x 8 in, envelopes (No. 10, Monarch); A4, A5, A6, B5 (JIS), B6 (JIS), 16K, 10 x 15 cm, L, Hagaki, envelopes (B5, C5, C6, DL, Chou #3, Chou #4); Custom sizes: 3 x 5 to 8.5 x 14 in (76 x 127 to 216 x 356 mm) Tray 2: Letter, statement, executive, envelopes (No. 10); A4, A5, B5 (JIS), 16K, envelopes (DL, B5, C5, Chou #3); Custom sizes: 4 x 8.3 to 8.5 x 11.7 in (102 x 210 to 216 x 297 mm) Optional trays 3, 4, and 5 (tray 3 standard on 556xh only): Letter, legal, oficio, executive, statement; A4, A5, B5 (JIS), 16K Duplex: Letter, legal, oficio, executive; A4, RA4, B5 (JIS)				
	ADF: Letter, legal, oficio, statement, executive, 4 x 6 in, 5 x 7 in, 5 x 8 in; A4, RA4, A5, A6, B5, B6 (JIS), postcard (JIS), double postcard (JIS)				
<i>Media weights</i>	Tray 1: Plain paper: 16 to 32 lb (60 to 120 g/m <sup>2</sup> ); Photo: 33 to 80 lb (125 to 300 g/m <sup>2</sup> ); Envelope: 20 to 24 lb (75 to 90 g/m <sup>2</sup> ); Brochure: 32 to 48 lb (120 to 180 g/m <sup>2</sup> ); Card: 90 to 110 lb (163 to 200 g/m <sup>2</sup> ) Tray 2: Plain paper: 16 to 32 lb (60 to 120 g/m <sup>2</sup> ); Photo: 33 to 66 lb (125 to 250 g/m <sup>2</sup> ); Envelope: 20 to 24 lb (75 to 90 g/m <sup>2</sup> ); Brochure: 32 to 48 lb (120 to 180 g/m <sup>2</sup> ); Card: 90 to 110 lb (163 to 200 g/m <sup>2</sup> ) Optional trays 3, 4, and 5 (tray 3 standard on 556xh only): Plain paper: 16 to 32 lb (60 to 120 g/m <sup>2</sup> ); Photo: 33 to 66 lb (125 to 250 g/m <sup>2</sup> ); Brochure: 32 to 48 lb (120 to 180 g/m <sup>2</sup> ); Card: 90 to 110 lb (163 to 200 g/m <sup>2</sup> ) Duplex: Plain paper: 16 to 32 lb (60 to 120 g/m <sup>2</sup> ); Brochure: 32 to 48 lb (120 to 180 g/m <sup>2</sup> ); Card: 90 to 110 lb (163 to 200 g/m <sup>2</sup> )				
	ADF: 12 to 53 lb (45 to 199 g/m <sup>2</sup> )				
<i>Media types</i>	Plain paper (light, intermediate, mid-weight, heavy, extra heavy, pre-punched, recycled, bond, other inkjet plain paper), photo (glossy, gloss, soft gloss, satin, matte, other inkjet photo), envelopes, labels, cards, specialty papers (glossy brochure, matte brochure, tri-fold brochure, Hagaki, greeting cards, other inkjet specialty paper)				
<b>Print languages</b>	HP PCL 6, HP PCL 5 (HP PCL 5 driver available from the Web)		HP PCL 6, HP PCL 5c, HP postscript level 3 emulation, native PDF printing (v 1.7)		



	HP PageWide Enterprise Color 556dn	HP PageWide Enterprise Color 556xh	HP PageWide Enterprise Color MFP 586dn	HP PageWide Enterprise Color MFP 586f	HP PageWide Enterprise Color Flow MFP 586z
<b>Fonts</b>	105 internal TrueType fonts scalable in HP PCL, 92 internal scalable fonts in HP Postscript level 3 emulation (Euro symbol built-in); 1 internal Unicode fonts (Andale Mono WorldType); 2 Internal Windows Vista® 8 fonts (Calibri, Cambria); additional font solutions available via third-party flash memory cards; HP LaserJet fonts and IPDS Emulation available at <a href="http://hp.com/go/laserjetfonts">hp.com/go/laserjetfonts</a>				
<b>Connectivity</b>	2 Hi-Speed USB 2.0 Host; 1 Hi-Speed USB 2.0 Device; Gigabit Ethernet 10/100/1000T network; Hardware Integration Pocket				Plus: Fax modem port
<b>Networking capabilities</b>	Standard via HP Jetdirect Ethernet embedded print server supports: 10Base-T, 100Base-Tx, 1000Base-T; 802.3az (EEE) support on Fast Ethernet and Gigabit Ethernet; IPsec				
<b>Mobile printing</b>	Standard: HP ePrint, <sup>34</sup> Apple® AirPrint®, <sup>35</sup> Mopria-certified, <sup>36</sup> Google Cloud Print™ 2.0				
	Optional: Wireless direct printing <sup>12</sup> and NFC touch-to-print <sup>13</sup>	Plus: Wireless direct printing <sup>12</sup> and NFC touch-to-print <sup>13</sup>	Optional: Wireless direct printing <sup>12</sup> and NFC touch-to-print <sup>13</sup>		
<b>Network protocols</b>	IPv4/IPv6: Apple Bonjour Compatible (Mac OS v10.2.4 or higher), SNMPv1/v2c/v3, HTTP, HTTPS, FTP, TFTP, Port 9100, LPD, WS Discovery, IPP, Secure-IPP, IPsec/Firewall IPv6: DHCPv6, MLDv1, ICMPv6 IPv4: Auto-IP, SLP, Telnet, IGMPv2, BOOTP/DHCP, WINS, IP Direct Mode, WS Print Other: ePrint, Google Cloud Print 2.0				
<b>Security</b>	Identity management: Kerberos authentication, LDAP authentication, 1000 user PIN codes, optional HP and third-party advanced authentication solutions (e.g., badge readers) Network: IPsec/Firewall with Certificate, Pre-Shared Key and Kerberos authentication, Supports WJA-10 IPsec Configuration Plug-in, 802.1X authentication (EAP-PEAP, EAP-TLS), SNMPv3, HTTPS, Certificates, Access Control List Data: Storage Encryption, Encrypted PDF and Email (uses FIPS 140-2 validated cryptographic libraries), Secure Erase, SSL/TLS (HTTPS), Encrypted Credentials Device: Security lock slot, USB port disablement, Hardware Integration Pocket for security solutions, HP Sure Start, intrusion detection, whitelisting, optional Trusted Platform Module Security management: Compatible with optional HP JetAdvantage Security Manager <sup>21</sup>				
<b>Printer management</b>	Printer Administrator Resource Kit for HP Universal Print Driver (UPD Active Directory Administrator Template, Add Print Model to Comments, AutoUpgradeUPD, Driver Configuration Utility, Driver Deployment Utility, HP Managed Printing Administration, PRNCON.EXE, HPPRLOG, Migrate-Server-Tools, UpdateNow, Remove Plug Play Drivers); HP Web Jetadmin Software; <sup>9</sup> Resource Kit for HP Web Jetadmin (HP SNMP Proxy Agent, HP WS Pro Proxy Agent); HP JetAdvantage Security Manager <sup>21</sup>				
<b>Compatible operating systems<sup>37</sup></b>	Windows® OS compatible with In-Box Driver: Windows XP SP3 all 32-bit editions (XP Home, XP Pro, etc.), Windows Vista all 32-bit editions (Home Basic, Premium, Professional, etc.), Windows 7 all 32- and 64-bit editions, Windows 8/8.1 all 32- and 64-bit editions (excluding RT OS for Tablets), Windows 10 all 32- and 64-bit editions (excluding RT OS for Tablets) Windows OS compatible with Universal Print Driver (From <a href="http://hp.com">HP.com</a> ): Windows XP SP3 32- and 64-bit editions (XP Home, XP Pro, etc.), Windows Vista all 32- and 64-bit editions (Home Basic, Premium, Professional, etc.), Windows 7 all 32- and 64-bit editions, Windows 8/8.1 all 32- and 64-bit editions (excluding RT OS for Tablets), Windows 10 all 32- and 64-bit editions (excluding RT OS for Tablets) Mac OS (HP Print Drivers available from <a href="http://hp.com">hp.com</a> and Apple Store): OS X 10.9 Mavericks, OS X 10.10 Yosemite, OS X 10.11 El Capitan Mobile OS (In-OS drivers): iOS, Android™, Windows 8/8.1/10 RT Linux® OS (In-OS HPLIP): SUSE Linux (12.2, 12.3, 13.1), Fedora (17, 18, 19, 20), Linux Mint (13, 14, 15, 16, 17), Boss (3.0, 5.0), Ubuntu (10.04, 11.10, 12.04, 12.10, 13.04, 13.10, 14.04, 14.10), Debian (6.0.x, 7.x) Other OS: UNIX®				

	HP PageWide Enterprise Color 556dn	HP PageWide Enterprise Color 556xh	HP PageWide Enterprise Color MFP 586dn	HP PageWide Enterprise Color MFP 586f	HP PageWide Enterprise Color Flow MFP 586z
<b>Network operating systems</b>	<p>Windows OS compatible with In-Box Driver: Windows Server 2003/2003 R2 32-bit (SP1/SP2) Standard/Enterprise (+ Cluster and Terminal Services), Windows Server 2008 32-/64-bit (SP2) Standard/Enterprise (+ Cluster and Terminal Services), Windows Server 2008 R2 64-bit (SP1) Standard/Enterprise (+ Cluster and Terminal Services)</p> <p>Windows OS compatible with Universal Print Driver (UPD) or Product-Specific drivers from <a href="http://HP.com">HP.com</a>: Windows Server 2003/2003 R2 32-/64-bit (SP1/SP2), Standard/Enterprise/Datacenter (+ Cluster and Terminal Services), Windows Server 2008/2008 R2 32-/64-bit (SP1/SP2), Standard/Enterprise/Datacenter (+ Cluster and Terminal Services), Windows Server 2012/2012 R2 64-bit, Standard/Foundation/Essentials/Datacenter (+ Cluster and Terminal Services)</p> <p>Citrix (on Windows Server 2003/2003R2), Citrix MetaFrame Presentation Server, 3.0, Citrix MetaFrame XP Presentation Server (Feature Release 1, 2, and 3), Citrix Presentation Server 4.0/4.5, Citrix XenApp 5.0 (Plus Feature Pack 2 and 3), Citrix (on Windows Server 2008/2008R2, Citrix XenApp 5.0 (Plus Feature Pack 2 and 3), Citrix XenApp 6.0/6.5/7.5, Citrix XenDesktop 5.6/7.0/7.5, Citrix (on Windows Server 2012/2012R2), Citrix XenApp 7.5, Citrix XenDesktop 7.0/7.5</p> <p>Novell Servers: (<a href="http://novell.com/iprint">novell.com/iprint</a>), Novell iPrint Appliance v1.0, Novell Open Enterprise Server 11/SP1, Novell Open Enterprise Server 2 for Linux, NetWare 6.5/SP8, Novell Clients (<a href="http://novell.com/iprint">novell.com/iprint</a>); Windows 8 (32-bit / 64-bit) recommend v5.86+, 8.1 recommend v5.94+, Windows 7 (32-bit / 64-bit) recommend v5.82+, Windows Vista (32-bit / 64-bit) recommend v5.82+, Windows XP / SP3 (32-bit only) recommend v5.82+</p>				
<b>System requirements, PC</b>	See "Compatible operating systems" above; CD-ROM or DVD drive, or Internet connection; dedicated USB or network connection or wireless connection; 200 MB available hard disk space; For OS hardware requirements see <a href="http://microsoft.com">microsoft.com</a>				
<b>System requirements, Mac</b>	See "Compatible operating systems" above; Internet, USB, 1 GB available hard drive space; OS compatible hardware (see <a href="http://Apple.com">Apple.com</a> )				
<b>Dimensions (width x depth x height)</b>	Operating: 20.8 x 18.2 x 17.9 in (530 x 463 x 457 mm)  Maximum: 36.7 x 29.3 x 17.9 in (934 x 745 x 457 mm) (with left door open, main paper tray open)	Operating: 20.8 x 18.2 x 23.5 in (530 x 463 x 597 mm)  Maximum: 40.8 x 29.3 x 23.5 in (1038 x 745 x 597 mm) (with accessory tray 3 and left door open, main paper tray open)	Operating: 20.8 x 22.2 x 20.8 in (530 x 564 x 529 mm)  Maximum: 36.7 x 29.6 x 30.9 in (934 x 752 x 786 mm) (with left door open, main paper tray open, document feeder lifted)		
<b>Weight (with ink cartridges)</b>	49 lb (22.2 kg)	64 lb (28.8 kg)	71.2 lb (32.3 kg)		
<b>What's in the box</b>	HP PageWide Enterprise Color 556dn Printer	HP PageWide Enterprise Color 556xh Printer	HP PageWide Enterprise Color MFP 586dn	HP PageWide Enterprise Color MFP 586f	HP PageWide Enterprise Color Flow MFP 586z
	Plus: HP Setup Ink Cartridges (yield after setup: ~6,000 pages CMYK); <sup>16</sup> Installation guide, Support flyer; Software drivers and documentation on CD-ROM; Power cord				Plus: HP Setup Ink Cartridges (CMYK: ~6,000 pages each); <sup>16</sup> Installation guide, Support flyer; Software drivers and documentation on CD-ROM; Power cord
<b>Software included</b>	For Windows OS: HP Software Installer/Uninstaller, HP PCL 6 Printer Driver, HP Device Experience (DXP), HP Update, Product Registration Assist, HP Web Services Assist (HP Connected), Online user manuals For Mac OS: Welcome Screen (Directs users to <a href="http://HP.com">HP.com</a> ) or OS App Source for printer software				
	Plus: Setup Scan to Folder and Email			Plus: HP Send Fax	
<b>Downloadable software</b>	From <a href="http://HP.com">HP.com</a> : Windows Full Software Solution, Windows driver only solution, Mac Software Solution, HP Universal Print Drivers (PCL6 and PS for Windows), HP ePrint Software (for Windows), Linux/Unix Print Drivers, HP Web JetAdmin, <sup>8</sup> HP Driver Configuration Utility, HP JetAdvantage Security Manager <sup>21</sup>  From other sites: mobile apps				
<b>Warranty</b>	One-year, onsite warranty; one-year technical phone support, chat, and email				

## Environmental and power specifications

	HP PageWide Enterprise Color 556dn	HP PageWide Enterprise Color 556xh	HP PageWide Enterprise Color MFP 586dn	HP PageWide Enterprise Color MFP 586f	HP PageWide Enterprise Color Flow MFP 586z
<b>Environmental ranges</b>					
<b>Temperatures</b>	Operating: 59 to 86° F (15 to 30° C) Storage: Before initial setup (Non-Purged): -40 to 140° F (-40 to 60° C); After initial setup (Purged): 32 to 140° F (0 to 60° C) <sup>38</sup>				
<b>Relative humidity range</b>	20 to 60% RH (recommended), 20 to 80% RH (operating), 5 to 90% RH (non-operating)				
<b>Altitude</b>	Not applicable		Up to 10,000 ft (up to 3,048 m)		
<b>Acoustic power emissions<sup>39</sup></b>	Ready mode: 3.5 B(A); Active printing: 6.9 B(A)		Ready mode: 3.5 B(A); Active printing: 6.8 B(A); Active copying: 7.0 B(A); Active scanning: 6.6 B(A)		
<b>Acoustic pressure emissions (bystander)</b>	Ready mode: 17 dB(A); Active printing: 55 dB(A)		Ready mode: 15 dB(A); Active printing and copying: 55 dB(A); Active scanning: 51 dB(A)		
<b>Power specifications</b>					
<b>Power supply required</b>	Input voltage: 100 to 240 VAC (+/- 10%), 50/60 Hz (+/- 3 Hz)				
<b>Power consumption<sup>40</sup></b>	Printing: 52 watts; Ready: 12.0 watts; Sleep: 6.3 watts; Manual Off: 0.3 watts; Auto-Off/Manual-On: 0.3 watts	Printing: 52 watts; Ready: 15.0 watts; Sleep: 7.5 watts; Manual Off: 0.3 watts; Auto-Off/Manual-On: 0.3 watts	Printing: 62 watts; Ready: 24.0 watts; Sleep: 8.5 watts; Manual Off: 0.3 watts; Auto-Off/Manual-On: 0.3 watts	Printing: 62 watts; Ready: 26.5 watts; Sleep: 8.5 watts; Manual Off: 0.3 watts; Auto-Off/Manual-On: 0.3 watts	
<b>Typical Electricity Consumption (TEC)</b>	1.340 kWh/Week	1.585 kWh/Week	1.869 kWh/Week	1.877 kWh/Week	
<b>Energy-saving features</b>	HP Auto-Off Technology <sup>29</sup>				
<b>Environmental specifications</b>	ENERGY STAR certified; EPEAT® Silver registered models available <sup>41</sup>				
<b>Safety and regulatory compliance</b>	IEC 60950-1:2005 +A1:2009 +A2:2013; EN60950-1:2006 +A11:2009 +A1:2010 +A12:2011 +A2:2013 / +AC:2011; EN 62479:2010 / IEC 62479:2010; Compliance of IEC 60950-1 standard considers all country deviations according to the most recent IECCEB Bulletin. UL/cUL Listed and UC CoC (US/Canada); GS Certificate (Germany, Europe); Low Voltage Directive 2006/95/EC with CE Mark (Europe)				
<b>Electromagnetic emission standard</b>	CISPR 22:2008 Class A, EN 55022:2010 Class A, FCC CFR 47 Part 15, ICES-003, Issue 5, EN 55024:2010, EN 61000-3-2:2006 +A1:2009 +A2:2009, EN 61000-3-3:2008, Other EMC approvals as required by individual countries				
<b>Telecom Compliance Certification</b>	Wi-Fi: EN 301 489-1 v1.9.2, EN 301 489-17 v2.2.1, EN 300 328 v1.8.1, FCC Title 47 CFR, Part 15 Subpart C (Section 15.247)/IC:RSS-210, EN 62311:2008/IEC62311:2007		Wired: ES 203 021-1 v2.1.1, ES 203 021-2 v2.1.2, ES 203 021-3 v2.1.2, R&TTE Directive 1999/5/EC with CE marking (Europe), FCC Rules and Regulations 47 CFR Part 68; other Telecom approvals as required by individual countries.		

# Ordering information

Use accessories and supplies specifically designed for the printer or MFP to help provide efficient performance. To order the accessories and supplies listed here, go to [hp.com](http://hp.com). To contact HP by country, please visit [hp.com/go/contact](http://hp.com/go/contact).

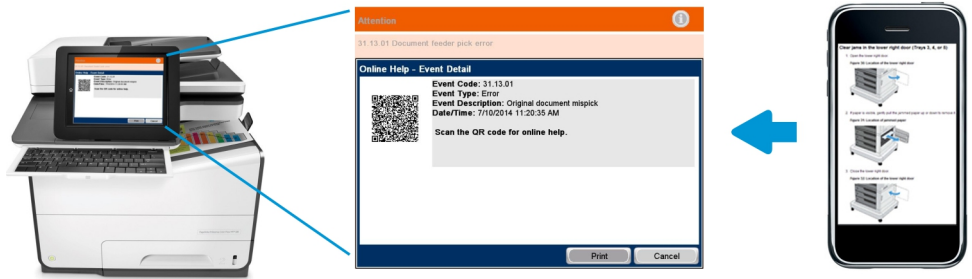
If you don't have access to the Internet, contact your qualified HP dealer, or call HP (U.S.) at (800) 282-6672.

<b>Product</b>	HP PageWide Enterprise Color 556dn	G1W46A
	HP PageWide Enterprise Color 556xh	G1W47A
	HP PageWide Enterprise Color MFP 586dn	G1W39A
	HP PageWide Enterprise Color MFP 586f	G1W40A
	HP PageWide Enterprise Color Flow MFP 586z	G1W41A
<b>Supplies<sup>5,16</sup></b>	HP 981A Black Original PageWide Cartridge (~6,000 pages)	J3M71A
	HP 981X High Yield Black Original PageWide Cartridge (~11,000 pages)	L0R12A
	HP 981Y Extra High Yield Black Original PageWide Cartridge (~20,000 pages)	L0R16A
	HP 981A Cyan Original PageWide Cartridge (~6,000 pages)	J3M68A
	HP 981X High Yield Cyan Original PageWide Cartridge (~10,000 pages)	L0R09A
	HP 981Y Extra High Yield Cyan Original PageWide Cartridge (~16,000 pages)	L0R13A
	HP 981A Magenta Original PageWide Cartridge (~6,000 pages)	J3M69A
	HP 981X High Yield Magenta Original PageWide Cartridge (~10,000 pages)	L0R10A
	HP 981Y Extra High Yield Magenta Original PageWide Cartridge (~16,000 pages)	L0R14A
	HP 981A Yellow Original PageWide Cartridge (~6,000 pages)	J3M70A
	HP 981X High Yield Yellow Original PageWide Cartridge (~10,000 pages)	L0R11A
	HP 981Y Extra High Yield Yellow Original PageWide Cartridge (~16,000 pages)	L0R15A
	HP 200 ADF Roller Replacement Kit (MFP 586 series only)	W5U23A
	Ink-collection unit	B5L09A
<b>Accessories</b>	HP PageWide Enterprise 500-sheet Paper Tray	G1W43A
	HP PageWide Enterprise Printer Stand	G1W44A
	HP PageWide Enterprise 3 x 500-sheet Paper Feeder and Stand	G1W45A
	HP 1GB DDR3 x32 144-Pin 800MHz SODIMM	E5K48
	HP Internal USB Ports	B5L28A
	HP LaserJet MFP Analog Fax Accessory 500 (MFP 586dn model only)	CC487A
	HP Foreign Interface Harness (MFP 586 series only)	B5L31A
	HP Common Card Reader <sup>9</sup>	CZ208A
	HP Trusted Platform Module	F5S62A
	HP Jetdirect 2900nw Print Server	J8031A
	HP Jetdirect 3000w NFC/Wireless Accessory	J8030A
	HP Jetdirect 3100w BLE/NFC/Wireless Accessory	3JN69A
	HP LaserJet Keyboard Overlay Kit for Simplified Chinese and Traditional Chinese (MFP 586z only)	A7W12A
	HP LaserJet Keyboard Overlay Kit for Swedish (MFP 586z only)	A7W14A
<b>HP Services</b>	<p>Make sure your imaging and printing investments are protected with Care Pack, part of HP Care. Pick your package of services to keep your MFP running and your business moving. Now your office can spend less time trouble-shooting and more time getting things done. For details, visit <a href="http://hp.com/go/cpc">hp.com/go/cpc</a>.<sup>42</sup></p> <p><i>Boost performance—it's your choice. HP Care for printers provides options to help you manage printing—from Care Pack services to customizable and advisory services. With HP Managed Print Services, we oversee everything for you.</i></p>	
<b>Solutions</b>	<p>HP Web Jetadmin: <a href="http://hp.com/go/wja">hp.com/go/wja</a></p> <p>HP Universal Print Driver: <a href="http://hp.com/go/upd">hp.com/go/upd</a></p> <p>HP JetAdvantage Security Manager: <a href="http://hp.com/go/securitymanager">hp.com/go/securitymanager</a></p> <p>HP LaserJet Fonts, Barcodes, and IPDS Emulation available at <a href="http://hp.com/go/laserjetfonts">hp.com/go/laserjetfonts</a></p> <p>To learn more about available infrastructure, management, and workflow solutions, visit <a href="http://hp.com/go/printing/solutions">hp.com/go/printing/solutions</a></p>	

# Appendix A: Control panel features

## Troubleshoot with ease

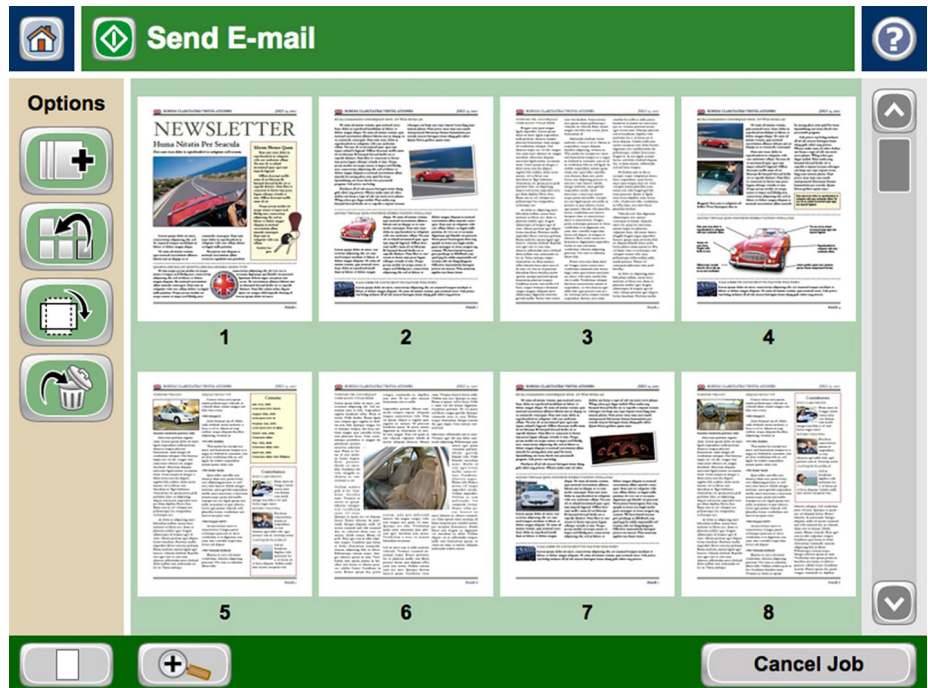
These HP PageWide devices can help save your IT department valuable time when it comes to troubleshooting problems. The new Remote Control Panel allows users to operate the user interface remotely, so IT can troubleshoot problems without running to the device.<sup>43</sup> Users can also quickly troubleshoot technical issues with HP's innovative, cloud-based Online Help services that are relevant and up to date. Easily solve problems from your PC or mobile device. A Quick Response (QR) code on the adjustable touchscreen links to quick, accurate Online Help using smart phones and tablets.<sup>44</sup> You can also find these links in the HP Embedded Web Server event log.



## Edit jobs right at the MFP

The control panel on the HP PageWide Enterprise Color MFP 586 series features image preview, which lets you minimize steps and reduce errors. Right from the device's 9.0-inch (22.8 cm) functional touchscreen with 8.0-inch (20.3 cm) Color Graphics Display, you can view and edit your scan job before you send it. You can easily get your scans to look just the way you want them. Instantly preview and modify scans before sending them into the workflow, eliminating the need to walk back and forth from a computer.

Scan multiple pages using the ADF and view them as thumbnail images, or zoom and pan for a detailed inspection. Before finalizing a document, you can reorder, rotate, delete, add, or zoom in on pages. You can apply changes to a single page, or multiple pages at once. Batch separation allows users to create separate PDF or PDF/A files from scanned documents. The Flow MFP 586z model can also create PDF OCR and PDF/A OCR files.<sup>19,43</sup>



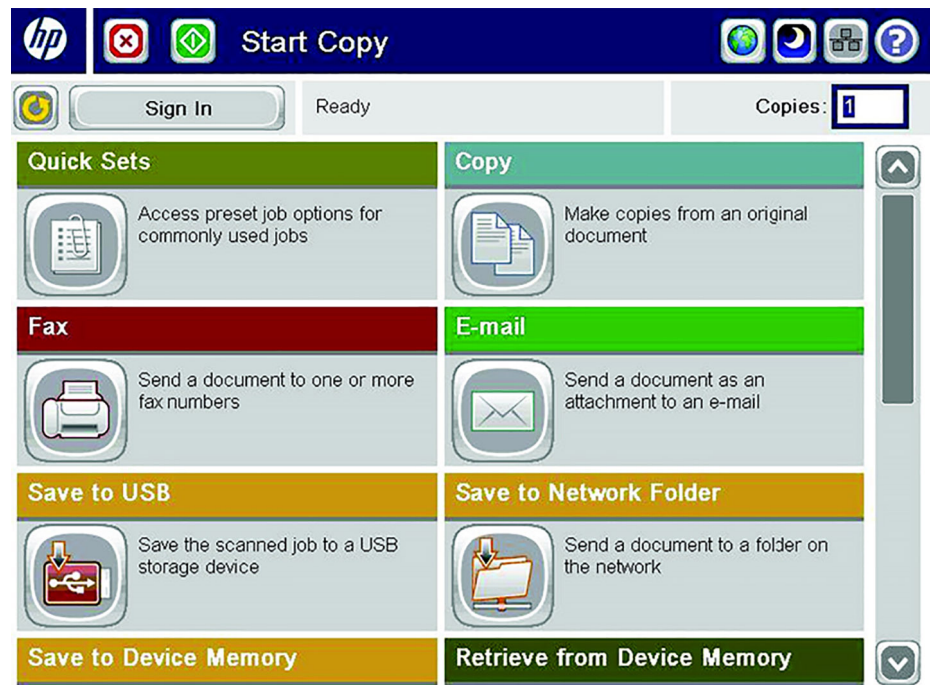
## Use HP Quick Sets to launch automated workflows

The 586 MFP's digital sending capability allows users to route documents to a variety of destinations like email recipients, USB, network folders, fax,<sup>25</sup> or the cloud.<sup>11</sup> With the Flow 586z model, you can also send scans to Microsoft SharePoint.<sup>11</sup>

HP Quick Sets let you launch document workflows and get it right every time—at the touch of a button. HP Quick Sets help by automating all of the steps of a complicated workflow, all on a large, full-color touchscreen. Users can find what they need right away.

In addition to scan destinations, you can preset other scan settings. These can include output file types such as PDF, JPEG, TIFF, MTIFF, XPS, and PDF/A formats. You can also specify security settings, such as encrypted PDFs to be delivered through encrypted and signed emails. Quick Set buttons can be easily created, labeled, and placed on the control panel home screen, so that you can quickly find the functions you need.

Quick Sets help IT by enabling them to promote or block access to certain device features. Calls to the helpdesk can be reduced when users have everything they need on the home screen and are restricted from accessing settings they shouldn't tamper with.



## Notes

<sup>1</sup> Comparison of Enterprise devices based on manufacturers' published specifications of fastest available color mode of color business A4 MFPs \$1,000-\$3,000 USD and color business A4 printers \$500-\$1,249 USD as of November 2015, excluding other HP PageWide products, and products with 1% or lower market share using market share as reported by IDC as of Q3 2015. HP PageWide speeds based on General Office mode and exclude first page. Learn more at [hp.com/go/printerspeeds](http://hp.com/go/printerspeeds).

<sup>2</sup> Based on HP review of 2018 published security features of competitive in-class printers. Only HP offers a combination of security features that can monitor to detect and automatically stop an attack then self-validate software integrity in a reboot. For a list of printers, visit: [hp.com/go/PrintersThatProtect](http://hp.com/go/PrintersThatProtect). For more information, visit: [hp.com/go/printersecurityclaims](http://hp.com/go/printersecurityclaims).

<sup>3</sup> Energy claim for Enterprise devices based on TEC data, reported on [energystar.gov](http://energystar.gov). Data normalized to determine energy efficiency of in-class color laser printers and MFPs with print speeds between 20-80 ppm as of February 2018. Subject to device setting. Actual results may vary.

<sup>4</sup> Purchase of optional paper trays required to reach maximum input capacity.

<sup>5</sup> Yield based on ISO 24711 cartridge yields for HP 981X series High Yield Original PageWide Cartridges compared with HP 981 series Original PageWide Cartridges and on HP 981Y Extra High Yield Original PageWide Cartridges compared with HP 981 series Original PageWide cartridges. Learn more at [hp.com/go/learnaboutsupplies](http://hp.com/go/learnaboutsupplies). Optional high-yield and extra-high-yield cartridges are not included in printer purchase and must be purchased separately.

<sup>6</sup> Wireless operations are compatible with 2.4 GHz operations only. App or software and HP ePrint account registration may also be required. Some features require purchase of an optional accessory. Learn more at [hp.com/go/mobileprinting](http://hp.com/go/mobileprinting).

<sup>7</sup> Wireless networking requires purchase of the HP Jetdirect 2900nw Print Server. Wireless performance is dependent on physical environment and distance from access point, and may be limited during active VPN connections.

<sup>8</sup> HP Web Jetadmin is available for download at no additional charge at [hp.com/go/wja](http://hp.com/go/wja).

<sup>9</sup> Solutions deployed through the Hardware Integration Pocket (HIP) may require additional purchase. HP Proximity Card Reader (CZ208a) is available for separate purchase for select HP devices with HIP and touchscreen display.

<sup>10</sup> Scan speeds measured from ADF. Actual processing speeds may vary depending on scan resolution, network conditions, computer performance, and application software.

<sup>11</sup> Scanning is only available on the HP PageWide Enterprise Color MFP 586 series. Requires an Internet connection to the printer. Services may require registration. App availability varies by country, language, and agreements. For details, see [hpconnected.com](http://hpconnected.com). Scanning to SharePoint and/or the cloud requires an Internet connection to the MFP. Services may require registration. App availability varies by country, language, and agreements. For details, see [hpconnected.com](http://hpconnected.com).

<sup>12</sup> Wireless direct printing is standard on the HP PageWide Enterprise Color 556xh model only. Requires purchase of optional HP Jetdirect 3000w NFC/Wireless Direct Accessory for HP PageWide Enterprise Color 556dn and MFP 586 series. Mobile device needs to be connected directly to the Wi-Fi® network of a wireless direct-capable MFP or printer prior to printing. Depending on mobile device, an app or driver may also be required. Wireless performance is dependent on physical environment and distance from the access point in the MFP or printer. For details, see [hp.com/go/businessmobileprinting](http://hp.com/go/businessmobileprinting).

<sup>13</sup> Touch-to-print capability is standard on the HP PageWide Enterprise Color 556xh only. Requires purchase of optional HP Jetdirect 3000w NFC/Wireless Direct Accessory for HP PageWide Enterprise Color 556dn and MFP 586 series. Mobile device must support Near Field Communication (NFC)-enabled printing. For more information, see [hp.com/go/businessmobileprinting](http://hp.com/go/businessmobileprinting).

<sup>14</sup> Measured using ISO/IEC 24734, excludes first set of test documents. For more information, see [hp.com/go/printerclaims](http://hp.com/go/printerclaims). Exact speed varies depending on the system configuration, software application, driver, and document complexity.

<sup>15</sup> Measured using ISO/IEC 17629. Exact speed for first page out varies depending on the system configuration, software application, driver, and document complexity. Learn more at [hp.com/go/printerclaims](http://hp.com/go/printerclaims).

<sup>16</sup> Average color composite (cyan/magenta/yellow) pages and black yields based on ISO/IEC 24711 or HP testing methodology and continuous printing. Actual yields vary considerably based on content of printed pages and other factors. For details, see [hp.com/go/learnaboutsupplies](http://hp.com/go/learnaboutsupplies).

<sup>17</sup> Page volume based on HP 980 Black, Cyan, Magenta and Yellow Ink Cartridges. Average yield based on ISO/IEC 24711 or HP testing methodology and continuous printing. Actual yield varies considerably based on content of printed pages and other factors.

<sup>18</sup> Less scheduled maintenance based on 150,000 pages printed, and published comparisons of majority of in-class color laser printers and A4 MFPs \$1,000-\$3,000 USD as of November 2015; market share as reported by IDC as of Q3 2015.

<sup>19</sup> Embedded OCR is only supported by the HP PageWide Enterprise Color Flow MFP 586z and is intended for occasional use. For high-volume OCR usage, consider optional server-based Digital Sending Software (DSS).

<sup>20</sup> Some features require additional purchase. A FutureSmart service pack update may be required to activate security features. Learn more at [hp.com/go/printsecurity](http://hp.com/go/printsecurity).

<sup>21</sup> HP JetAdvantage Security Manager must be purchased separately. For details, see [hp.com/go/securitymanager](http://hp.com/go/securitymanager).

<sup>22</sup> Based on internal HP testing of Original HP pigment inks on ColorLok® papers.

<sup>23</sup> Water, smear, fade, and highlighter resistance based on ISO 11798 and internal HP testing. For details, see [hp.com/go/printpermanence](http://hp.com/go/printpermanence).

<sup>24</sup> Requires purchase of server software such as HP Access Control Secure Pull Printing. Learn more at [hp.com/go/businessmobileprinting](http://hp.com/go/businessmobileprinting).

<sup>25</sup> Fax capability is standard on the HP PageWide Enterprise Color MFP 586f and Flow MFP 586z models only; it is optional on the MFP 586dn model.

<sup>26</sup> Use of the optional HP Trusted Platform Module accessory may require a firmware upgrade.

<sup>27</sup> The HP Universal Print Driver is available for download at no additional charge at [hp.com/go/upd](http://hp.com/go/upd).

<sup>28</sup> HP recommends that the number of printed pages per month be within the stated range for optimum device performance, based on factors including supplies replacement intervals and device life over an extended warranty period.

<sup>29</sup> HP Auto-Off technology capabilities subject to device and settings.

<sup>30</sup> First copy out and copy speed measured using ISO/IEC 29183, excludes first set of test documents. For more information, see [hp.com/go/printerclaims](http://hp.com/go/printerclaims). Exact speed varies depending on the system configuration, software application, driver, and document complexity.

<sup>31</sup> Based on standard ITU-T test image #1 at standard resolution and MMR encoding, the HP fax device can transmit at 3 sec/page for V.34 and 6 sec/page for V.17.

<sup>32</sup> HP recommends that the number of scanned pages per month be within the stated range for optimum device performance.

<sup>33</sup> Duty cycle is defined as the maximum number of pages per month of imaged output. This value provides a comparison of product robustness in relation to other HP LaserJet or HP Color LaserJet devices, and enables appropriate deployment of printers and MFPs to satisfy the demands of connected individuals or groups.

---

<sup>34</sup> Printer requires ePrint account registration. App or software may be required. Wireless operations are compatible with 2.4 GHz operations only. Learn more at [hp.com/go/mobileprinting](http://hp.com/go/mobileprinting).

<sup>35</sup> Supports the following devices running iOS 4.2 or later: iPad®, iPad® 2, iPhone® (3GS or later), iPod touch® (3rd generation or later). Works with HP's AirPrint®-enabled printers and requires the printer be connected to the same network as your iOS device. Wireless performance is dependent on physical environment and distance from the access point.

<sup>36</sup> Mopria-certified HP printer and mobile device must be connected to the same wireless network or have a direct wireless connection. Performance is dependent on physical environment and distance from the wireless access point. Wireless operations are compatible with 2.4 GHz routers only.

<sup>37</sup> Not all "Compatible Operating Systems" are supported with INBOX software; Full solution software available only for Windows® 7 and newer; Legacy Windows® Operating Systems (XP, Vista®, and equivalent servers) get print and Scan drivers only; Windows® RT OS for Tablets (32- and 64-bit) uses a simplified HP print driver built into the RT OS; UNIX® modelscripts are available on [HP.com](http://HP.com) (Modelscripts are printer drivers for UNIX operating systems); Linux® systems use in-OS HPLIP software.

<sup>38</sup> If stored below the lowest specified operating temperature, unit must slowly warm up to an approved operating temperature (HP recommends waiting 24 hours at approved operating temperature prior to using the printer).

<sup>39</sup> Acoustic values are subject to change. For current information, see [hp.com/support](http://hp.com/support).

<sup>40</sup> Power requirements are based on the country/region where the printer is sold. Do not convert operating voltages. This will damage the printer and void the product warranty.

<sup>41</sup> EPEAT Silver registered models of this product are available where HP registers imaging and equipment products.

<sup>42</sup> Service levels and response times may vary depending on your geographic location. Service starts on date of hardware purchase. Restrictions and limitations apply. For details, visit [hp.com/go/cpc](http://hp.com/go/cpc).

<sup>43</sup> Availability dependent on firmware or software updates or upgrades.

<sup>44</sup> Online Help must be enabled on the printer or MFP. Mobile device must have an Internet connection to access online services.

Sign up for updates  
[hp.com/go/getupdated](http://hp.com/go/getupdated)



Share with colleagues

---

© Copyright 2016, 2018-2019 HP Development Company, L.P. The information contained herein is subject to change without notice. The only warranties for HP products and services are set forth in the express warranty statements accompanying such products and services. Nothing herein should be construed as constituting an additional warranty. HP shall not be liable for technical or editorial errors or omissions contained herein.

AirPrint, iPad, iPhone, and iPod touch are trademarks of Apple Inc. Android and Google Cloud Print are trademarks of Google Inc. ENERGY STAR is a registered trademark owned by the U.S. Environmental Protection Agency. Linux is the registered trademark of Linus Torvalds in the U.S. and other countries. Microsoft, Windows, and Windows Vista are U.S. registered trademarks of the Microsoft group of companies. UNIX is a registered trademark of The Open Group.

