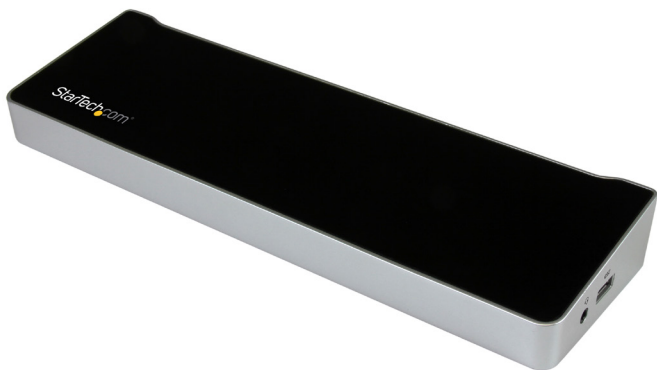


## USB-C Triple-4K Monitor Laptop Dock - Power Delivery

DK30CH2DPPD

DK30CH2DPPDU



\*actual product may vary from photos

FR: Guide de l'utilisateur - [fr.startech.com](http://fr.startech.com)

DE: Bedienungsanleitung - [de.startech.com](http://de.startech.com)

ES: Guía del usuario - [es.startech.com](http://es.startech.com)

NL: Gebruiksaanwijzing - [nl.startech.com](http://nl.startech.com)

PT: Guia do usuário - [pt.startech.com](http://pt.startech.com)

IT: Guida per l'uso - [it.startech.com](http://it.startech.com)

For the latest information, technical specifications, and support for this product, please visit [www.StarTech.com/](http://www.StarTech.com/)

## FCC Compliance Statement

This equipment has been tested and found to comply with the limits for a Class B digital device, pursuant to part 15 of the FCC Rules. These limits are designed to provide reasonable protection against harmful interference in a residential installation. This equipment generates, uses and can radiate radio frequency energy and, if not installed and used in accordance with the instructions, may cause harmful interference to radio communications. However, there is no guarantee that interference will not occur in a particular installation. If this equipment does cause harmful interference to radio or television reception, which can be determined by turning the equipment off and on, the user is encouraged to try to correct the interference by one or more of the following measures:

- Reorient or relocate the receiving antenna.
- Increase the separation between the equipment and receiver.
- Connect the equipment into an outlet on a circuit different from that to which the receiver is connected.
- Consult the dealer or an experienced radio/TV technician for help

This device complies with part 15 of the FCC Rules. Operation is subject to the following two conditions: (1) This device may not cause harmful interference, and (2) this device must accept any interference received, including interference that may cause undesired operation.

Changes or modifications not expressly approved by StarTech.com could void the user's authority to operate the equipment.

## Industry Canada Statement

This Class B digital apparatus complies with Canadian ICES-003.

Cet appareil numérique de la classe [B] est conforme à la norme NMB-003 du Canada.

CAN ICES-3 (B)/NMB-3(B)

## Use of Trademarks, Registered Trademarks, and other Protected Names and Symbols

This manual may make reference to trademarks, registered trademarks, and other protected names and/or symbols of third-party companies not related in any way to StarTech.com. Where they occur these references are for illustrative purposes only and do not represent an endorsement of a product or service by StarTech.com, or an endorsement of the product(s) to which this manual applies by the third-party company in question. Regardless of any direct acknowledgement elsewhere in the body of this document, StarTech.com hereby acknowledges that all trademarks, registered trademarks, service marks, and other protected names and/or symbols contained in this manual and related documents are the property of their respective holders. HDMI is a registered trademark of HDMI Licensing, LLC. Windows is a registered trademark of Microsoft Corporation in the United States and/or other countries. USB Type-C™ and USB-C™ are trademarks of USB Implementers Forum.

# Table of Contents

Introduction .....	1
Packaging contents .....	1
Requirements .....	1
Product diagram .....	2
Side view .....	2
Rear view .....	2
About USB 3.0 and USB 3.1 Gen 1 .....	3
About USB-C .....	3
Install the docking station .....	3
Power the docking station .....	3
Connect your devices to the dock .....	4
Install the remaining drivers .....	4
Charge a device .....	4
Configure a display device .....	4
Technical support .....	6
Warranty information .....	6

# Introduction

## Packaging contents

- 1x USB-C™ docking station
- 1x USB-C to USB-C host cable
- 1x universal power adapter (NA/JP, ANZ for DK30CH2DPPD) or (EU, UK for DK30CH2DPPDU)
- 1x quick-start guide

## Requirements

- A host laptop computer with:
  - Windows® 10, 8.1, 8, 7 or macOS 10.12, 10.11, 10.10
  - An available USB-C port

### Notes:

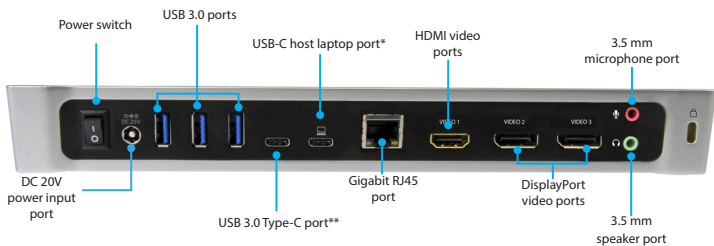
- Operating system requirements are subject to change. For the latest requirements, please visit [www.StarTech.com/DK30CH2DPPD](http://www.StarTech.com/DK30CH2DPPD) or [www.StarTech.com/DK30CH2DPPDU](http://www.StarTech.com/DK30CH2DPPDU)
  - Not all USB-C ports support the full functionality of the USB Type-C standard. Ensure that your host USB-C port supports DP alt mode, as well as USB Power Delivery.
  - To ensure full dock functionality, the host USB-C port must support USB Power Delivery and DP alt mode. The docking station can still connect to a host laptop with a USB-C port that doesn't support Power Delivery (must still support DP alt mode). Without support for Power Delivery, the docking station will not provide power to your host laptop.
- An HDMI® display with cabling
  - Two DisplayPort displays with cabling
- Note:** A 4K-capable display is required to achieve 4K x 2K resolution (4K is also known as 4K x 2K)

# Product diagram

## Side view



## Rear view



\*USB-C host port connects to your computer only (supporting data, DP alt mode and USB Power Delivery)

\*\*USB 3.0 Type-C port connects to peripheral devices only (supporting USB-C equipment)

# About USB 3.0 and USB 3.1 Gen 1

USB 3.0 is also known as USB 3.1 Gen 1. This connectivity standard offers speeds up to 5Gbps. Any mention of USB 3.0 in this manual or on the StarTech.com website for DK30CH2DPPD and DK30CH2DPPDU refers to the 5Gbps USB 3.1 Gen 1 standard.

## About USB-C

Not all USB-C ports support the full functionality of the USB Type-C™ standard. Some ports might only provide data transfers, and might not support video or power delivery over USB.

To use this dock to its full potential, ensure that the host USB-C port from your computer supports DP alt mode, as well as USB Power Delivery.

## Install the docking station

When you connect the dock to your laptop's USB-C port, the required drivers are automatically installed. If you receive a prompt to automatically install the driver(s), follow the on-screen instructions to complete the installation.

The drivers can also be found under the **Support** tab on our website at: [www.StarTech.com/DK30CH2DPPD](http://www.StarTech.com/DK30CH2DPPD) or [www.StarTech.com/DK30CH2DPPDU](http://www.StarTech.com/DK30CH2DPPDU)

### Notes:

- An active internet connection is required.
- It may take up to five minutes for the drivers to install.

## Power the docking station

When the docking station is plugged in and powered, you can use USB-C Power Delivery to power and charge your laptop through its USB-C port. The docking station cannot receive power from the host laptop, therefore the power adapter must always be connected to the docking station.

1. Select the appropriate power cord for your region and connect it to the power adapter.
2. Connect the power adapter to an AC electrical outlet and to the docking station's **DC 20V IN** (power input) port.
3. Connect the USB-C cable to a USB-C port on your host laptop and to the USB-C host port on the dock.

**Note:** In order to power and charge your connected laptop, its USB-C port must support USB Power Delivery.

## Connect your devices to the dock

1. Connect your peripherals to the dock (for example, USB devices, RJ 45 network, and so on).
2. Connect your external display(s) to the dock's video port(s). The dock features one HDMI port, and two DisplayPort ports.

**Note:** The **USB 3.0 ports** and **USB 3.0 Type-C port** are standard USB 3.0 throughput ports. When the dock is connected to a host laptop, these ports provide a trickle charge to a selection of devices.

## Install the remaining drivers

Depending on your operating system, the dock will automatically install some of the required drivers once connected to your host laptop. To complete the full driver installation process:

1. Download the latest drivers by visiting [www.StarTech.com/DK30CH2DPPD](http://www.StarTech.com/DK30CH2DPPD) or [www.StarTech.com/DK30CH2DPPDU](http://www.StarTech.com/DK30CH2DPPDU) and clicking the **Support** tab.
2. Extract the contents of the compressed file(s) that you downloaded.
3. Double-click the appropriate driver for the version of Windows or macOS that you're running and follow the on-screen instructions to complete the installation.

**Note:** If you are prompted to restart your computer, do so to complete the installation.

## Charge a device

To charge a device, connect it to the dock's **USB fast-charge port**.

### Notes:

This side facing USB 3.0 port can only fast-charge connected devices that comply with USB Battery Charging Specification Revision 1.2.

## Configure a display device

Use your Windows or Mac operating system to adjust display settings for multiple monitors. Your laptop hardware must support dual external displays.

### Notes:

- A connection to a host laptop is not required to charge your device when it's connected to the side facing **USB fast-charge port**.
- The side facing **USB fast-charge port** can only fast-charge connected devices that comply with USB Battery Charging Specification Revision 1.2.

# Supported video resolutions

3840x2160p @60Hz or 4096x2160p @60Hz resolutions can be achieved if the connected DisplayPort display offers 4K support.

See the video resolution chart below for specific configurations and supported resolutions:

Video Output	Max DisplayPort Resolution – Port 1	Max DisplayPort Resolution – Port 2	Max HDMI Resolution
DisplayPort 1 Only (Single Display)	3840x2160p @60Hz or 4096x2160p @60Hz	N/A	N/A
DisplayPort 2 Only (Single Display)	N/A	3840x2160p @60Hz or 4096x2160p @60Hz	N/A
HDMI Only (Single Display)	N/A	N/A	3840x2160p @30Hz or 4096x2160p @24Hz
DisplayPort 1 and HDMI (Two Displays)	3840x2160p @60Hz or 4096x2160p @60Hz	N/A	3840x2160p @30Hz or 4096x2160p @24Hz
DisplayPort 2 and HDMI (Two Displays)	N/A	3840x2160p @60Hz or 4096x2160p @60Hz	3840x2160p @30Hz or 4096x2160p @24Hz
DisplayPort 1 and DisplayPort 2 (Two Displays)	3840x2160p @60Hz or 4096x2160p @60Hz	3840x2160p @60Hz or 4096x2160p @60Hz	N/A
All Displays (DisplayPort 1, DisplayPort 2, HDMI)	3840x2160p @60Hz or 4096x2160p @60Hz	3840x2160p @60Hz or 4096x2160p @60Hz	3840x2160p @30Hz or 4096x2160p @24Hz

**Note:** Depending on the configuration and the supported resolutions of your connected monitors, the docking station may support video resolutions lower than those specified above.



# Technical support

StarTech.com's lifetime technical support is an integral part of our commitment to provide industry-leading solutions. If you ever need help with your product, visit [www.startech.com/support](http://www.startech.com/support) and access our comprehensive selection of online tools, documentation, and downloads.

For the latest drivers/software, please visit [www.startech.com/downloads](http://www.startech.com/downloads)

# Warranty information

This product is backed by a three-year warranty.

StarTech.com warrants its products against defects in materials and workmanship for the periods noted, following the initial date of purchase. During this period, the products may be returned for repair, or replacement with equivalent products at our discretion. The warranty covers parts and labor costs only. StarTech.com does not warrant its products from defects or damages arising from misuse, abuse, alteration, or normal wear and tear.

## Limitation of Liability

In no event shall the liability of StarTech.com Ltd. and StarTech.com USA LLP (or their officers, directors, employees or agents) for any damages (whether direct or indirect, special, punitive, incidental, consequential, or otherwise), loss of profits, loss of business, or any pecuniary loss, arising out of or related to the use of the product exceed the actual price paid for the product. Some states do not allow the exclusion or limitation of incidental or consequential damages. If such laws apply, the limitations or exclusions contained in this statement may not apply to you.

Hard-to-find made easy. At StarTech.com, that isn't a slogan. It's a promise.

StarTech.com is your one-stop source for every connectivity part you need. From the latest technology to legacy products — and all the parts that bridge the old and new — we can help you find the parts that connect your solutions.

We make it easy to locate the parts, and we quickly deliver them wherever they need to go. Just talk to one of our tech advisors or visit our website. You'll be connected to the products you need in no time.

Visit [www.startech.com](http://www.startech.com) for complete information on all StarTech.com products and to access exclusive resources and time-saving tools.

*StarTech.com is an ISO 9001 Registered manufacturer of connectivity and technology parts. StarTech.com was founded in 1985 and has operations in the United States, Canada, the United Kingdom and Taiwan servicing a worldwide market.*