

EPSON®
EXCEED YOUR VISION

S

SureColor® S-Series

Epson SureColor S30670

Epson SureColor S50670

Epson SureColor S70670





Value. Performance. Quality.

How do you re-invent the roll-to-roll solvent printer? You start by utilizing over a decade of printer design, while creating a dedicated team of engineers and customers working together to rethink everything. The result? Three unique signage printers focused on value, performance and print quality.

Introducing the all-new Epson® SureColor S-Series

Incorporating our most advanced imaging technology, including our exotic MicroPiezo® TFP® print head designed exclusively for use with our all-new Epson UltraChrome® solvent inks, the SureColor S-Series could quite possibly be the most versatile line of signage printers ever developed.

This is the way solvent printing should be.



S30

4-Color

SureColor S30670



Unmatched Value

Capable of producing amazing print quality at print speeds up to 620 square feet per hour², the Epson SureColor S30670 utilizes some of our most advanced imaging technology — including our exotic MicroPiezo TFP print head, designed exclusively for use with our latest solvent-based inks — Epson UltraChrome GS2¹. The all-new SureColor S30670 redefines the price-performance equation, delivering unmatched value for any size print shop.

GS2 ULTRACHROME GS2 INK	MAXIMUM MEDIA WIDTH	MAX. INK CAPACITY PER COLOR	MICROPIEZO TFP PRINT HEAD	HIGH-SPEED DRYER	PRINT SPEEDS ²	SQ FT/HR
	64"	700 ml	SINGLE	OPTIONAL	High Quality	78
					Production	205
					Draft	620

4 Colors Standard / 4 Colors Maximum

S50

5-Color

SureColor S50670



A Performance Benchmark Has Been Set

Utilizing a Dual-Array MicroPiezo TFP print head, the Epson SureColor S50670 is capable of producing everyday outdoor banner signage at print speeds up to 550 square feet per hour². And when combined with our all-new Epson UltraChrome GS2 Inks — including an optional White ink technology — the SureColor S50670 redefines performance. Delivering unmatched everyday print speeds and print flexibility, this could be the most important printer you own.

GS2 ULTRACHROME GS2 INK	MAXIMUM MEDIA WIDTH	MAX. INK CAPACITY PER COLOR	MICROPIEZO TFP PRINT HEAD	HIGH-SPEED DRYER	PRINT SPEEDS ²	SQ FT/HR
	64"	1400 ml	DUAL	STANDARD	High Quality	140
					Production	283
					Draft	980

4 Colors Standard / 5 Colors Maximum

S70

10-Color

SureColor S70670



Photographic Signage — Reimagined

Capable of producing astonishing print quality at print speeds up to 288 square feet per hour², the Epson SureColor S70670 is unmatched in photographic signage output. Utilizing our most advanced imaging technology, including our Dual-Array MicroPiezo TFP print head — combined with our all-new Epson UltraChrome GSX 10-color solvent inks — the SureColor S70670 redefines photographic print quality for virtually any signage, vehicle graphics, or even fine art reproduction applications. If you only had one roll-to-roll printer in your shop — this should be it.

GSX ULTRACHROME GSX INK	MAXIMUM MEDIA WIDTH	MAX. INK CAPACITY PER COLOR	MICROPIEZO TFP PRINT HEAD	HIGH-SPEED DRYER	PRINT SPEEDS ²	SQ FT/HR
	64"	700 ml	DUAL	OPTIONAL	Extreme Quality	140
					High Quality Production	288
					Banner	550

8 Colors Standard / 10 Colors Maximum

S-Series

Product Comparison Chart

Features

Feature	SureColor S30670	SureColor S50670	SureColor S70670
Printer Width	64-inch	64-inch	64-inch
Print Head Configuration	MicroPiezo TFP	Dual-Array MicroPiezo TFP	Dual-Array MicroPiezo TFP
Ink Technology ¹	Epson UltraChrome GS2	Epson UltraChrome GS2	Epson UltraChrome GSX
Base / Maximum Color Configuration	4-Color / 4-Color	4-Color / 5-Color	8-Color / 10-Color
Base Color Configuration	CMYK	CMYK + CMYK	CMYK + Lc + Lm + Lk + Or
Optional Color Configuration	N.A.	White	White & Metallic Silver
Maximum Ink Capacity per Color	700 ml	1400 ml	700 ml
Maximum Outdoor Durability — Unlaminated ³	3 Years	3 Years	3 Years
Maximum Print Speed ² — Banner & Scrim	620 ft ² /hr	980 ft ² /hr	550 ft ² /hr
Maximum Print Speed ² — Adhesive Vinyl	106 ft ² /hr	190 ft ² /hr	196 ft ² /hr
Maximum Print Speed ² — White or Metallic	N.A.	67 ft ² /hr	32 ft ² /hr (W) + 43 ft ² /hr (MS)
Additional High-Speed Dryer	Optional	Standard	Optional
Standard Connectivity	USB 2.0 & Gigabit Ethernet	USB 2.0 & Gigabit Ethernet	USB 2.0 & Gigabit Ethernet
Standard Limited Warranty	1-Year On-site	1-Year On-site	1-Year On-site

¹ The printer is designed to use only Epson ink cartridges and not other brands of new or refilled cartridges, or other brands of ink or bulk ink systems. Using Epson cartridges is important for reliable performance and high image quality. Epson offers voluntary recycling of spent ink cartridges.

² All print speeds shown are based upon print engine speed only, in bi-directional mode. Total throughput times depend upon front-end RIP, file size, printer resolution, ink coverage, networking, etc.

³ Three-year durability is an estimate based on accelerated testing by Epson according to ISO 18920, on 3M™ Controltac™ U180-10 film in a vertical display orientation in simulated outdoor display conditions. Actual durability can vary significantly. The estimate does not include prints made using Orange, White or Metallic Silver inks. EPSON MAKES NO WARRANTY, EXPRESS OR IMPLIED, INCLUDING IMPLIED WARRANTIES OF MERCHANTABILITY OR FITNESS FOR A PARTICULAR PURPOSE, AS TO IMAGE DURABILITY ON ANY MEDIA OR IN ANY CONDITIONS. EPSON HAS NO LIABILITY OF ANY KIND FOR FADING OR ANY OTHER CHANGE IN A PRINT NO MATTER HOW DISPLAYED. Some media providers, such as 3M and Avery®, do warrant image durability for these Epson printers; see the provider's website for details. See promaging.epson.com for Epson tips on enhancing durability.

⁴ For one printer using the standard ink set in a room of at least 180 m³ with a minimum ventilation coefficient of 2.2. For more information, see the MSDS sheets at promaging.epson.com.

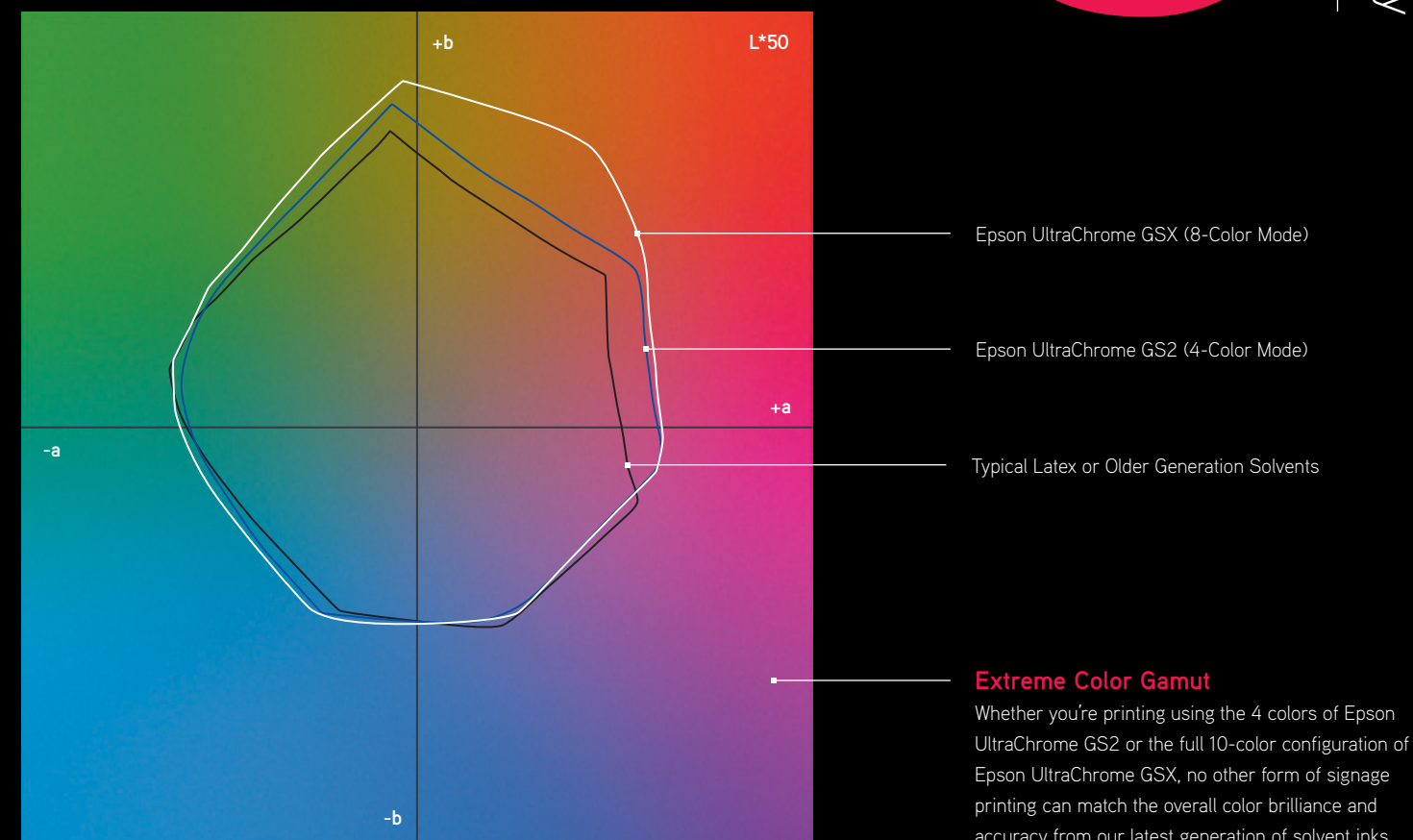
⁵ The print head is a maintenance part which the user is responsible to replace when necessary. However, Epson covers head replacement while the printer is under the Epson Preferred™ Limited Warranty and under any Preferred Plus Plan (limited or unlimited number of head replacements, depending on the Preferred Plus Plan purchased). The life of the print head will vary depending on the user's print volume, print patterns and heater temperature for print settings. Doing proper user maintenance of the print head will help prolong its life.



Redefining Solvent Ink Technology

The more you can differentiate yourself from the competition, the better. This is what inspired the development of our latest solvent ink technology — Epson UltraChrome GS2 and Epson UltraChrome GSX. Our chemical engineers improved print speeds by using a faster-drying chemistry, improved outdoor print durability with an improved Yellow, and set a new benchmark for photographic signage by using lighter shades of Cyan, Magenta and Black. And when you add the ability to use White and Metallic Silver to this base ink set, you create a printing solution with unlimited possibilities for making your customers happy.

Prepare to be amazed.



Epson UltraChrome GS2 Ink

You've never seen color as brilliant and accurate from a 4-color ink set. Created using our latest generation of solvent chemistry, it pushes overall print quality to new levels.



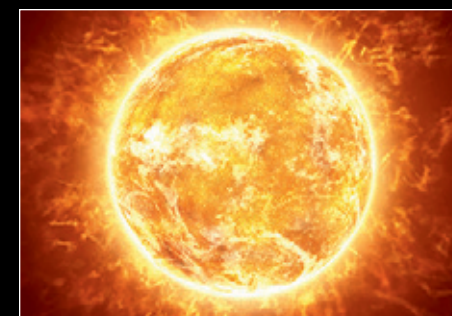
Epson UltraChrome GSX Ink

It's impossible to explain how amazing the print quality on typical solvent-based media looks with this 10-color ink set. All we can say is, your customers have never seen their prints look this good.



Superior Print Durability

We've developed an all-new Yellow solvent ink, significantly improving the overall outdoor durability of prints — up to 3 years without lamination³.



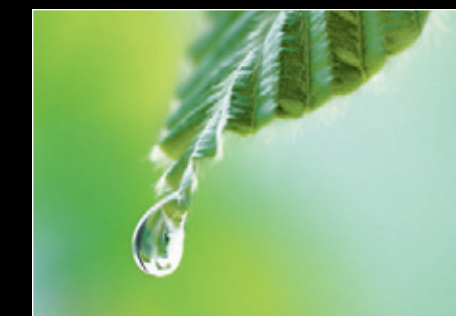
Media Compatibility

Because Epson UltraChrome is based upon proven solvent ink chemistry, virtually any roll-based media in your print shop is compatible.



Environmentally Responsible

No special ventilation or air purification is required⁴. Our ink technology meets the chemical requirements for Nordic Swan and contains no Nickel compounds. Now that's being responsible.



GS2

Epson UltraChrome GS2 Ink

4-Color

GSX

Epson UltraChrome GSX Ink

10-Color

New High-density White Ink

Newly-formulated Titanium Dioxide-based chemistry produces up to 3.8 times better opacity than current solvent-based White inks. And with superior drying and a patented formula to reduce sedimentation, this could be the best White ink printing solution available.

AccuPhoto™ GS2 Screening

By taking advantage of the MicroPiezo TFP print head, this new 4-color screening technology can produce outstanding prints, previously only possible from 6-color printers.



New Orange Ink

Our latest Orange solvent ink significantly increases the overall color gamut, allowing you to print critical brand and spot colors accurately.

New Metallic Silver Ink

An all-new Small Particle Aluminum Technology allows the SureColor S70670 to produce true metallic prints in virtually any color. Just imagine what your print shop could do with such a unique printing technology.

New Light Black Ink

We've developed a lighter shade of Black, significantly improving the overall gray and color balance of prints, while dramatically reducing metamerism.

AccuPhoto GSX Screening

An advanced form of dot placement produces levels of photographic print quality beyond any other form of sign printing. And capable of producing some of the world's most demanding fine art reproductions.





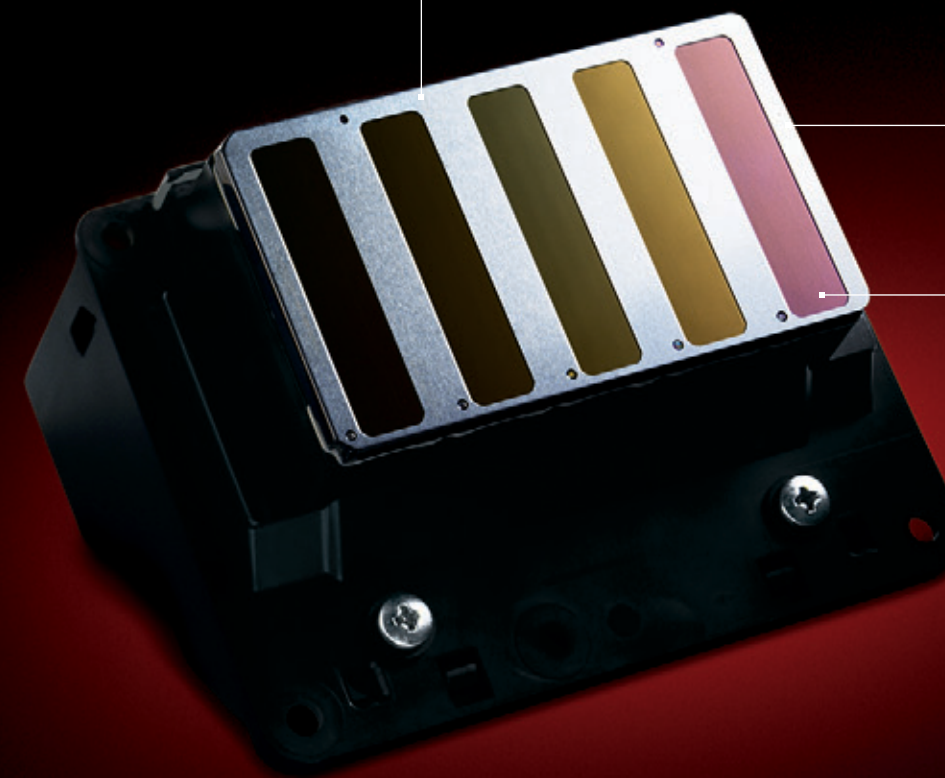
Advanced Printer Technology

You just know when something is manufactured correctly. The overall build quality. How it sounds. How you interact with it. But it's what you don't see that makes the SureColor S-Series remarkable. Every printer is assembled by hand, utilizing some of the most advanced technologies available — including an all-new robotic welding process that allows Epson to eliminate several hundred bolts from the core printer frame. Not only does this yield incredibly precise parts with zero deformation, but it stiffens the base structure of the printer to eliminate vibration during the printing process.

This could be the most advanced printer ever designed.

Epson MicroPiezo TFP Print Head

Developed to outperform our previous generation of print head technology, Epson MicroPiezo TFP can produce significantly better quality prints, both faster and more reliably, than virtually any other form of solvent-based imaging⁵.



Enhanced Variable Droplet Technology as small as 4.2 picoliters

Unique coating technology reduces the possibility of a nozzle clog

Superior Precision and Detail

Capable of producing extremely fine ink droplets, as small as 4.2 picoliters up to an amazing 1440 x 1440 dpi, the S-Series produces superior text and vector imaging like nothing else on the market today.



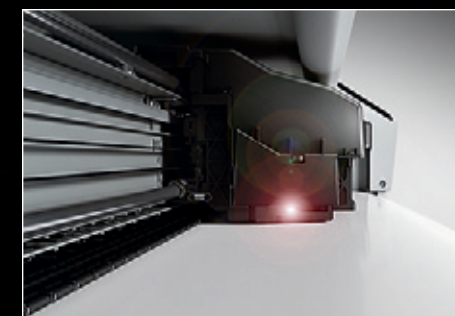
Powered by Onyx

Every SureColor S-Series comes with a copy of ONYX GamaPrint™ Pro, including support for sizing, cropping, tiling, and nesting. It even includes robust ICC color management with the ability to recalibrate.



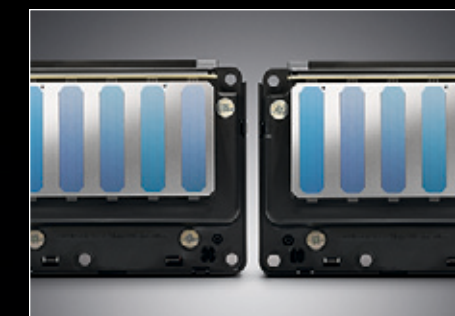
Auto Head Alignment and Cleaning

A built-in LED sensor can automatically align all color channels quickly and accurately. In addition, the LED sensor can automatically detect and clean any clogged or partially clogged ink nozzles.



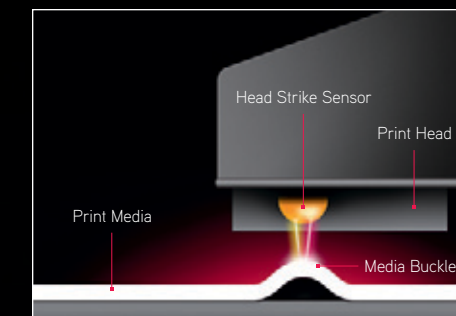
Print Head Redundancy

If a print head should ever fail, the Epson SureColor S50670 and S70670 can continue to operate on a single print head until proper maintenance can be done. This dramatically minimizes downtime.



Automatic Print Head Strike Detection

Due to the extreme print speeds of the Epson SureColor S50670, this model is capable of sensing a head strike during printing and warning the operator, reducing downtime and wasted media.



S-Series

Product Details and Specifications

Specs



Fully Motorized Take-up Reel with Media Tension Control (Supports wind-in or wind-out)

Gigabit Ethernet and USB 2.0

Dual Standard 110 V Power Compatibility

Precision Media Handling

Fully motorized media handling with sensor-based Auto Media Tension Control, resulting in media feed accuracy of about 0.4 mm over a 50 meter print — superior print quality without media recalibration.

Easy to Operate

A new full-color LCD front control panel provides quick access to important printer functions. With smart media and ink cartridge locations, this could be the simplest printer to operate in your shop.



Optional High-speed Dryer

Standard on the Epson SureColor S50670, this integrated print dryer is a great option for SureColor S70670 printers doing a lot of White or Metallic printing. It's rarely needed for the SureColor S30670.



Optional High-capacity Roll Support

Optional on all of the S-Series printers, this system supports heavy media rolls up to 175 lb with an outer roll diameter of 11.8 inches, the highest in its class. The perfect solution for longer, unattended printing.



Feature	Description
Dimensions and Weight	SC-S30670 106" (W) x 50" (D) x 41" (H) 483 lb SC-S50670 106" (W) x 50" (D) x 41" (H) 525 lb SC-S70670 106" (W) x 50" (D) x 41" (H) 505 lb Dimensions and weight include printer stand and take-up reel
Printer Interfaces	Includes as standard one Hi-Speed USB 2.0 (1.1 compatible) and one Gigabit Ethernet port (10/100/1000Base-T)
RIP Workflow by Onyx	Standard PANTONE® licensed Postscript Language Level 3 Compatible RIP by Onyx. A complete workflow software with layout, nesting, tiling, custom spot color management and custom media support with over 100 profiles included. The Epson SureColor S-Series printers are supported by most leading third-party RIPs and workflows.
Onyx RIP Requirements	Server Workstation: Windows Vista® or Windows® XP (32-bit) 2.8 GHz Intel® Core 2 Duo or better 4GB memory recommended Client Workstation(s): Macintosh® 10.5x or higher Windows Vista or Windows XP (32- or 64-bit)
Media Handling	Media input – Single roll-to-roll 12" up to 64" wide Cut-sheet size – 17" x 22" up to 64" wide Media core compatibility – Handles 2" and 3" cored media Max. roll media diameter – Up to 9.8" and 90 lb Weight – Up to 1 mm thick media Manual head height – 1.5, 2.0 or 2.5 mm Media tension settings – Electronically controlled, adjustable Roll media take-up reel – Fully automatic wind-in or wind-out with tension bar Optional Heavy Duty Roll media system – Supports up to 175 lb input weight
Epson Intelligent Ink Cartridges	Cartridge fill volume – 700 ml each color 600 ml each White 350 ml each Metallic Silver Ink cartridge shelf life (recommended) – 2 years from printed production date or 6 months after open
Safety Standards and EMI	UL (MET), FCC (Class A), CSA, TSCA, OSHA, CE, and EMC
Electrical Requirements	Voltage: AC 100 – 120 V, AC 200 – 240 V Frequency: 50 – 60 Hz Current: 20 A at AC 110 – 120 V or 10 A at AC 200 – 240 V Requires 2 power outlets Maximum power consumption: Approx. 2640 W Operating – Less than 800 W Sleep – Less than 12 W Power Off – Less than 0.6 W
Optional Accessories	Heavy Roll Media System: Supports up to 175 lb Up to 11.8" diameter roll Included in all HD Edition printers Optional Print Dryer: Fan-based drying system Requires additional power outlet and 1 A at AC 110-120 V or 0.5 A at AC 200 – 240 V Operating power consumption – Uses less than 45 W Included with all SC-S50670 printers
Warranty and Service	Standard one-year, on-site, limited warranty and usually next-business-day service with toll-free phone support Monday through Friday Optional extended Epson Preferred Plus service programs available for purchase

The Art of Performance.

EPSON[®]
EXCEED YOUR VISION

Better Products for a Better Future[™]

For more information on Epson's environmental programs, go to
eco.epson.com

Epson America, Inc. 3840 Kilroy Airport Way, Long Beach, CA 90806

Epson Canada Limited 185 Renfrew Drive, Markham, Ontario L3R 6G3

EPSON, Epson UltraChrome, MicroPiezo, SureColor and TFP are registered trademarks. EPSON Exceed Your Vision is a registered logomark and Better Products for a Better Future is a trademark of Seiko Epson Corporation. AccuPhoto is a trademark and Epson Preferred is a service mark of Epson America, Inc. All other product and brand names are trademarks and/or registered trademarks of their respective companies. Epson disclaims any and all rights in these marks.

Copyright 2012, Epson America, Inc. CPD-36074_XXK 11/12_XX



proimaging.epson.com