

Your desktop:
just got bigger.

WYSE
| | | |



Wyse C class™ Small size, big performance.

All you need to know. Here.



Introducing the Wyse C class thin clients

Meet the Wyse C class. Combining small size and excellent performance, it sets a new benchmark in thin computing.

Six models are available featuring: Wyse ThinOS™; Microsoft Windows CE; SUSE Linux Enterprise Thin Client, Microsoft Windows XP Embedded and Microsoft Windows Embedded Standard operating systems – and a Zero Client model for Wyse WSM provisioning:



Wyse C10LE™

Featuring the blisteringly fast Wyse ThinOS designed for high security environments.



Wyse C30LE™

Windows CE 6 - Microsoft's componentized real-time operating system for small footprint devices.



Wyse C50LE™

Flexibility and security in an easy to manage platform.



Wyse C90LE™

Windows XP Embedded - runs thousands of existing Windows applications and drivers.



Wyse C90LEW™

Take advantage of the power of Microsoft Windows Embedded Standard.



Wyse C00LE™

Zero Client with no local operating system. Used with Wyse WSM provisioning software for a PC experience on a thin desktop.



Start

Models

Features

Technical

Print

WYSE
I I I I

Features Wyse C class thin clients

Compact. Clever. Capable.

Creating highly productive, fully functional and compact virtual desktops has never been easier. Each Wyse C class features full support for the Wyse TCX™ suite of user enhancements - that includes multiple display support, multimedia & Flash playback, rich audio and USB peripheral connectivity - and Wyse WSM™ zero client provisioning software delivering a PC experience on a thin or 'zero client'.

Cool performance. Cooler workspaces.

Designing these levels of high processing and graphics performance into such a compact space hasn't been at the expense of energy consumption and heat emissions either. Each Wyse C class draws under 7 watts of power – creating cooler working environments – in every respect.

Learn more: Simply click the **Wyse C class feature icons** below:

Performance



Wyse C class Connectivity



Mounting Options



Green



Provisioning Software



Management Software



Virtualization Software



Virtualization Software



Wyse ThinOS



Microsoft Windows CE



Wyse Enhanced SUSE Linux Enterprise



Microsoft Windows XP Embedded



Microsoft Windows Embedded Standard



Visit: wyse.com



Take a tour of the Wyse C class range features here



Start

Models

Features

Technical

Print

WYSE
| | | |

Performance

High performance. Inside out.

Inside every compact, Wyse C class lies a punchy VIA C7 1 GHz processor and an advanced hardware media accelerator delivering rich multimedia and video playback up to 1080p HD resolution.

Outside, you'll find advanced DVI-I display connectivity for one or two displays, four free USB 2.0 ports, PS/2 ports for keyboard and mouse, gigabit Ethernet and optional WiFi (b/g/n) support. Wyse C class supports the Wyse TCX software suite of user-experience enhancements and Wyse WSM zero-client provisioning software.

VIA C7 1GHz processor

plus advanced best performance per watt
hardware media accelerator



Continue tour



Start

Models

Features

Technical

Print

WYSE
I I I I

Wyse C class family connectivity

Wyse C10LE, C30LE, C50LE, C90LE, C90LEW thin client and C00LE zero client



Well connected

DVI-I Video output

Two PS/2 ports for keyboard and mouse

Optional wireless

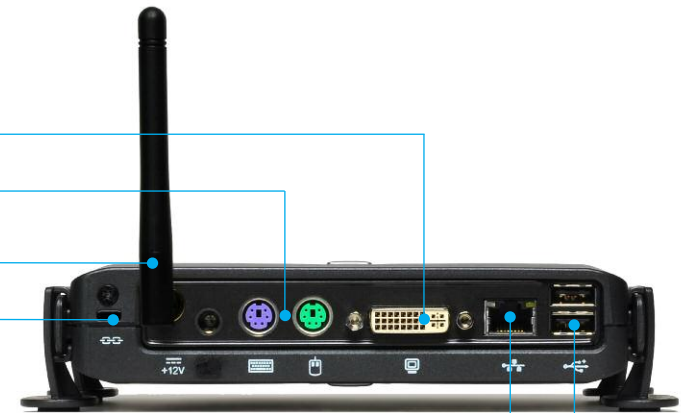
Kensington lock slot

10/100/1000 Base-T ethernet port

Four available external USB 2.0 ports
(2 front; 2 back)

Audio out: 1/8-inch mini jack, 16 bit stereo

Audio in: 1/8-inch mini jack,
8 bit stereo microphone



Continue tour



Start

Models

Features

Technical

Print

WYSE
I I I I

Mounting options

Fits around you.

On the desk or out of sight; Wyse C class fits around you. Every Wyse C class includes a monorail mount that lets you choose how and where to fit it: horizontally, vertically, directly to walls, under desks ...and even fitted discretely to the rear of standard desktop displays.



Desktop

- Wyse C class clients feature sturdy feet for simple horizontal desktop installation.

Back of monitor or wall mounting

- An optional VESA mount bracket enables Wyse C class to be mounted on the back of a monitor (this requires the four industry standard mounting points to be free). The same bracket can be used for wall mounting.

Continue tour



Start

Models

Features

Technical

Print

WYSE
I T I

Desktop computing Without compromise



That's Wyse
EarthSmart
Computing



EarthSmart Computing™



Going Green with Wyse thin computing

Every Wyse C class model is EnergyStar certified, a recognized sign of energy efficiency. Through our EarthSmart Computing initiative we are committed to helping organizations implement a greener computing strategy - one that delivers a more efficient and productive computing experience for your users with a positive effect on energy wastage, heat and carbon emissions.

Green Power

Each fanless Wyse C class draws just under 7 watts* of power and creates very little heat as a result - contributing to cooler, quieter user work environments, a greatly reduced carbon footprint and huge savings in energy costs when compared to equivalent PC desktops.

Learn more

Download carbon calculators, fact sheets and white papers from here: www.wyse.com/green

*Average power usage with device connected to 1 keyboard, 1 PS/2 mouse, and 1 monitor.

Continue tour



Start

Models

Features

Technical

Print

WYSE
| | | |

Provisioning Software Wyse WSM

Wyse WSM Delivers full PC functionality with all the benefits of centralized management and maintenance-free 'Zero Clients'.

Wyse WSM provisions the operating system and applications on-demand to desktop devices across your network. Even traditional management tasks such as firmware upgrades, patching or installing new software applications are carried out one-time only centrally on the server, avoiding the need to visit individual desktops. Dramatically speeding-up and simplifying deployment in one stroke.

The power of a PC, without the complexity.

Wyse Zero Clients and Wyse WSM provide compact, energy efficient and productive desktops with all the dynamic user experience of a PC without the day-to-day complexities and risks associated with one.

Plus, as all Wyse Zero Clients have no moving parts to fail, their service lives (typically 5-10 years) are extended beyond those of comparable PCs, and the noise from fans and hard drives is eliminated. Better still, their low power consumption means low heat output enabling comfortable working environments with a reduced dependence on costly carbon-heavy air conditioning - often leaving workplace cooling achievable through natural ventilation.



Continue tour



Start

Models

Features

Technical

Print

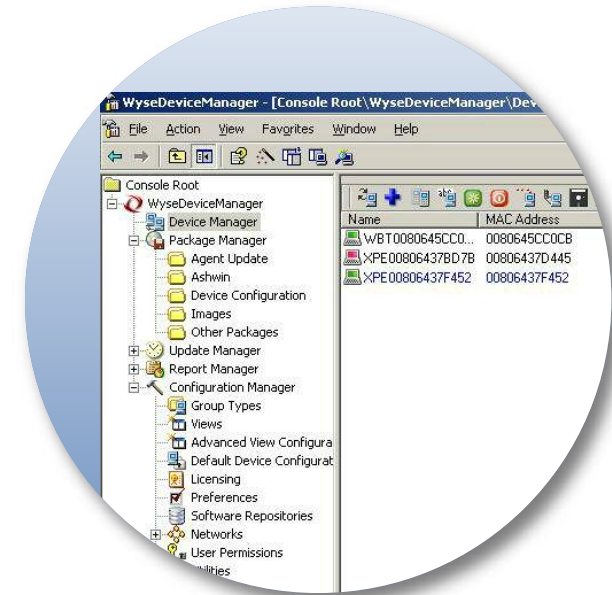
WYSE
I I I I

Management Software Wyse Device Manager

Thin computing remote management. Made easy.

Wyse Device Manager (WDM) provides comprehensive, enterprise-wide management for Wyse thin clients. A licence for WDM Workgroup Edition is included and may be upgraded to WDM Enterprise Edition for an additional charge. **Key features include:**

Security	<ul style="list-style-type: none">• HTTPS Based Imaging / Updates• Fully Encrypted Network Traffic• Multi-user Admin Access (MS AD) Support
No-Hassle Deployment	<ul style="list-style-type: none">• Complete Device Imaging / Patching / Updates• Bandwidth Throttling for Efficiency / Reliability• Software Updates and Add-ons
Device Administration and Monitoring	<ul style="list-style-type: none">• Device Health Status / Reporting• Remote Shadowing / Control• Default Device Configuration
Scalability	<ul style="list-style-type: none">• Distributed Architecture• SQL / MSDE Support• Multiple Remote Repository Support
Complete Asset Visibility	<ul style="list-style-type: none">• Automated Discovery• Detailed Hardware Asset information• Installed Software Asset information



Continue tour



Start

Models

Features

Technical

Print

WYSE
I I I I

Virtualization Software Wyse TCX™ Suite with Collaborative Processing Architecture™

Wyse TCX delivers an amazing user experience in one software suite.

Wyse TCX is our new software suite which enriches the user experience by removing the limitations previously associated with thin clients. It enhances, not replaces, key protocols like ICA/HDX and RDP adding key features to make each more valuable. With Wyse TCX users receive the best PC experience available on a thin computing platform.^{1,2}



Wyse TCX Multi-display

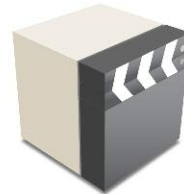
Ensures application windows and dialog boxes are multi-monitor aware when using more than one monitor.



Wyse TCX USB Virtualizer

Enables plug and play peripheral support for virtual desktop environments.

- Redirect and use local USB devices in virtual desktops.
- Deploy virtual desktops to knowledge workers with special device access needs.
- Enable a broad set of USB peripherals including webcams and headsets.



Wyse TCX Multimedia

Streamlines the delivery of the multimedia stream to the local client for a rich user experience within a thin computing architecture.

- Accelerates Mpeg1, Mpeg2, WMV, Mpeg4 Part 2, AC3, AAC, MP3, WAV, WMA media types.
- Collaborative Processing Architecture enhances server scalability, and network utilization by off-loading multimedia rendering to the client.



Wyse TCX Flash Acceleration

Wyse TCX Flash Acceleration helps thin client users to experience improved Flash video performance. While the Flash player continues to run server-side, the resulting images are transcoded and redirected to the client for fast rendering. The technology allows for greater control of frame rate and compression and supports enhanced playback of youtube style flash videos in Internet Explorer.



Wyse TCX Rich Sound

Enables bi-directional audio in virtual desktop environments, enabling solutions such as VOIP, digital dictation or voice recognition to be deployed.

[Continue tour](#)



¹ Subject to licence fee.
² Support is dependant on host Operating System.



Start

Models

Features

Technical

Print

WYSE
I T I

Virtualization Software Wyse Virtual Desktop Accelerator

Removing the barriers of network latency

Wyse Virtual Desktop Accelerator (VDA) enables virtualized desktop and thin computing environments to be deployed to areas where network latency has, to date, presented operational barriers. Now, with Wyse VDA, more users can receive the full benefits of Wyse thin computing – with the best PC experience over virtualized desktops.

Wyse VDA is a software-only solution for Wyse thin clients and supported PCs that delivers the best user experience for the allocated network bandwidth by neutralizing the effects of network latency and packet loss. Making 'thin' suitable for more remote-site, branch, or field-based users.

Wyse VDA works with instead of replacing existing RDP and ICA protocols, accelerating them by up to 20 times on networks faced with latencies up to and beyond 300ms, and at least 768kbps bandwidth.



At a glance features:

- Software-only acceleration of virtual desktops and applications
- Accelerates existing Citrix ICA and Microsoft RDP protocols
- Works on WANs and 'fat, long pipes'
- Accelerates connections to Citrix XenApp, Citrix XenDesktop, VMware View and Microsoft Terminal Server and Microsoft Hyper-V VDI
- Enhances Wyse TCX software suite functionality across wide-area networks
- Enables Wyse Collaborative Processing Architecture across wide-area networks
- Administrator console provides control of maximum bandwidth per connection
- Leverages built-in security of underlying protocols (128-bit encryption for RDP and ICA).

Continue tour



Start

Models

Features

Technical

Print

WYSE
I T I

Operating Systems Wyse ThinOS

Wyse ThinOS is the most optimized, management-free solution for Citrix XenApp, Citrix XenDesktop, Microsoft Terminal Server and VMware View virtual desktop environments.

Wyse ThinOS ensures every Wyse thin client provides flexible and secure user access as it's the only thin computing operating system to feature an unpublished API delivering built-in protection from the viruses, malicious software and trojans developed by hackers.

This fast, purpose-built thin computing operating system boots-up in seconds, updates itself automatically, and delivers IT managers with simple, scalable administration to suit their organization's needs.

Wyse ThinOS makes time consuming maintenance tasks such as software and firmware updates as easy as dragging and dropping them onto a central file server (ftp, http and https).

Image management and configuration can be automated via DHCP and fileserver for a 'hands-off' approach, while Wyse Device Manager provides complete 'hands-on' management of enterprise-wide devices.

Wyse ThinOS delivers a wealth of innovative, user-oriented and productive features:

Easy management

- Wyse ThinOS enables simple, scalable device management from day one.
- Its easy FTP-based configuration and automatic update facility allows for time-saving hands-off device management.
- In fact it's so easy, many IT managers find they don't need dedicated management tool. For those that do - they'll benefit from Wyse ThinOS' complete integration with Wyse Device Manager.

Fast boot-up

- Wyse ThinOS users and managers alike benefit from the class-leading fast boot-up times.

Security

- Featuring an unpublished API and no file system, Wyse ThinOS is inherently secure providing maximum security from malware and viruses.

Smart card support

- Wyse ThinOS gives organizations the levels of secure access they need with seamless smart-card roaming between devices.

Full support for Wyse Virtual Desktop Accelerator

- New Wyse Virtual Desktop Accelerator delivers the best user experience for the allocated network bandwidth and neutralizes the effects of network latency and packet loss, making 'thin' suitable for more remote-site, branch, or field-based users.
- Accelerates RDP and ICA up to 20 times on networks with latencies up to and exceeding 300ms and at least 768kbps bandwidth.

Continue tour



Start

Models

Features

Technical

Print

WYSE
| | | |

Operating Systems Microsoft Windows CE

Wyse-enhanced Microsoft Windows CE is ideal for departments and organizations that want a Microsoft end-to-end solution, and support for Citrix ICA, Microsoft RDP and VMware View as well as a local browser and terminal emulation, plus standard connections to peripherals and add-ons.

Microsoft Windows CE gives you a PC-like experience on the desktop, with local terminal emulation so you can run most legacy applications.

By combining this small and fast operating system with firmware components, Wyse is able to reduce boot times and increase protection against viruses, trojan horses, and other malware.

The result is a simply more secure solution that provides the flexibility to add standard peripherals, from printers to scanners to USB thumb drives. However these peripherals can only be connected under access controlled by the IT administrator.



Continue tour



Start

Models

Features

Technical

Print

WYSE
I I I I

Operating Systems SUSE Linux Enterprise Thin Client

Wyse Enhanced SUSE Linux Enterprise Thin Client (SLETC) is a simple, secure, and easy to manage platform designed for customers looking for flexibility and support of the latest protocols (ICA, PCoIP, RDP, etc) without the need for a Windows-based client.

Thin-Linux for the Enterprise

Wyse Enhanced SLETC is not a home-brew Linux. In fact, it's the industry's only enterprise-quality Linux platform, created by combining the security and flexibility of Novell's SUSE Linux with Wyse's thin computing leadership and innovation in user experience and simplified management. Additionally, SLETC is the only thin-Linux platform to protect customers from potential IP infringement suits as it is jointly indemnified by Novell and Microsoft.



Simple "Hands-Off" Management

Deploying, managing, and updating SLETC is easier than any other thin-Linux distribution, Period. Utilizing Wyse's proven automatic update and configuration approach, management tasks can be handled centrally and easily without any management software required.

Updating 1 or 1,000 clients is as simple as dragging and dropping a file into a folder. For customers that desire a little more hands-on approach (such as asset tracking, reporting, etc) then integration with Wyse Device Manager is built-in.

Security

Wyse Enhanced SLETC is designed with security in mind. IT Managers are able to provide a locked-down experience, smartcard login to virtual environments, VPN connectivity, and leverage a read-only file system that protects against data loss, theft and virus attacks.

Flexible, Multi-Protocol Support

Being built from a standard enterprise-quality Linux distribution means SLETC supports a wide range of protocols and infrastructures straight-out-of-the-box including Citrix, Microsoft, VMware and even your legacy applications (such as terminal emulations) - allowing you to mix-and-match connections from a single SLETC image.

That's Wyse Enhanced SUSE Linux Enterprise Thin Client

The only enterprise-quality Linux that's optimized for thin computing.

[Continue tour](#)



Start

Models

Features

Technical

Print

WYSE
| | | |

Operating Systems Microsoft Windows XP Embedded

Running Microsoft Windows XP Embedded on Wyse thin clients gives IT departments the ability to support Citrix ICA, Microsoft RDP and VMware View environments and deploy fully functional desktops with better manageability and significantly lower total cost of ownership than personal computers.

Wyse Enhanced Microsoft Windows XP Embedded-based thin clients can run 32 bit Microsoft Windows applications, either locally or from servers located on the network, with inbuilt flexibility to add and support a host of desktop peripherals with permission from the IT administrator.



Secure write-protected thin desktops

This robust and flexible operating system is further enhanced by the Wyse file-based Write Filter that enables you to protect the file system image from accidental changes or user customization.

On rebooting, the thin client simply returns to the required file system image state.

Wyse customized image support

Wyse technicians are able to help you customize Windows XP Embedded to your exact requirements and create bespoke system images for subsequent enterprise-wide deployment, management and update through Wyse Device Manager.

Contact your Wyse Partner for further details.

Continue tour



Start

Models

Features

Technical

Print

WYSE
| | | |

Operating Systems Microsoft Windows Embedded Standard

Running Windows Embedded Standard (WES), the latest and most advanced embedded OS from Microsoft, on Wyse thin clients gives IT departments the ability to deploy fully functional desktop clients with better manageability and significantly lower total cost of ownership than personal computers.

Wyse WES-based thin clients can run 32 bit Microsoft Windows applications, either locally or from servers, with the inbuilt flexibility to add and support a host of desktop peripherals with permission from the IT administrator.



Full support is provided for RDP 7.0, Citrix ICA 11.2, VMware View 4.0.1 and Internet Explorer 8.

Secure write-protected thin desktops

This robust and flexible operating system is further enhanced by the Wyse file-based Write Filter that enables you to protect the files, folder and/or entire volumes from accidental changes or user customization. On rebooting, the thin client simply returns to its original state thus preventing any possible damaging modification either from users or malware.

Wyse customized image support

Wyse technicians are prepared to help you customize Windows Embedded Standard to your exact requirements in order to create custom-built images for subsequent enterprise-wide deployment, management and update through Wyse Device Manager.

Contact your Wyse Partner for further details.

Take the Tour again



Start

Models

Features

Technical

Print

WYSE
I I I I

Contact Wyse

Wyse Technology Inc.

3471 North First Street, San Jose, CA 95134-1801

Visit our website at:

<http://www.wyse.com> or send an email to: sales@wyse.com

Wyse Sales

800 GET WYSE (800 438 9973)

Wyse Customer Service Center:

800 800 WYSE (800 800 9973)

**Wyse offers thin computing sales, service
and support expertise around the globe.**

[Click here for contact details of your regional Wyse office.](#)

©2010 The Wyse logo and Wyse are trademarks of Wyse Technology Inc. Other product names mentioned herein are for identification purposes only and may be trademarks and/or registered trademarks of their respective companies. All specifications are subject to change without notice. Whilst we make every effort to ensure the accuracy of the details, specifications, models, images and benefits featured in this datasheet, we cannot be held responsible for any errors and/or omissions. If you have any queries regarding Wyse products please contact your authorized regional Wyse Partner or representative for further information and assistance. Some features require support by server operating system and protocol. Approved final 170410.



Start

Models

Features

Technical

Print

WYSE
I I I I

Technical Wyse C class Specifications

Wyse C class thin clients are available across a variety of operating systems featuring the speed of Wyse ThinOS, the functionality of Microsoft Windows CE, the security of SUSE Linux Enterprise Thin Client, the versatility of Microsoft Windows XP Embedded, the advanced capabilities of Microsoft Windows Embedded Standard and the provisioning power of Wyse WSM.

[Learn more](#) Simply click the data sheets below:

Wyse C10LE, C30LE, C50LE C90LE, C90LEW thin clients and C00LE zero clients

Thumbnail of the 'Wyse C class family Hardware Specifications' data sheet. The document is titled 'Wyse C class family Hardware Specifications' and contains detailed technical information about the hardware components of the Wyse C class thin clients.

Wyse ThinOS

Thumbnail of the 'Wyse ThinOS Software specifications' data sheet. The document is titled 'Wyse ThinOS Software specifications' and details the software features and capabilities of the Wyse ThinOS operating system.

Microsoft Windows CE

Thumbnail of the 'Microsoft Windows CE 6.0 WFR3 Software Specifications' data sheet. The document is titled 'Microsoft Windows CE 6.0 WFR3 Software Specifications' and provides technical details for the Windows CE operating system.

Wyse Enhanced SUSE Linux Enterprise Thin Client

Thumbnail of the 'SUSE Linux Enterprise Thin Client Software specifications' data sheet. The document is titled 'SUSE Linux Enterprise Thin Client Software specifications' and outlines the software requirements and features for the SUSE Linux Enterprise Thin Client.

Microsoft Windows XPe

Thumbnail of the 'Microsoft Windows XP Embedded SP3 Software specifications' data sheet. The document is titled 'Microsoft Windows XP Embedded SP3 Software specifications' and details the software specifications for the Windows XP Embedded operating system.

Microsoft Windows Embedded Standard

Thumbnail of the 'Microsoft Windows Embedded Standard Software specifications' data sheet. The document is titled 'Microsoft Windows Embedded Standard Software specifications' and provides technical details for the Windows Embedded Standard operating system.

Wyse WSM

Thumbnail of the 'Wyse WSM Software Specifications' data sheet. The document is titled 'Wyse WSM Software Specifications' and details the software specifications for the Wyse WSM provisioning tool.

Visit: wyse.com



Start

Models

Features

Technical

Print

WYSE
| | | |

Wyse C class family Hardware Specifications

Processors	VIA C7 1GHz
Chipset	VIA VX855
Memory	C class with Wyse ThinOS (C10LE): 128MB Flash / 512MB RAM DDR2 C class with Windows CE (C30LE): 128MB Flash / 512MB RAM DDR2 C class with SUSE Linux (C50LE): 1GB Flash / 1GB RAM DDR2 C class with Windows XP Embedded (C90LE): 1GB Flash / 1GB RAM DDR2 C class with Windows Embedded Standard (WES) (C90LEW): 2GB Flash / 1GB RAM DDR2 C class for Wyse WSM (C00LE): 0GB Flash / 1GB RAM DDR2
Maximum memory Configuration	Flash up to 4GB / RAM up to 2GB
I/O peripheral support	One DVI-I port, DVI to VGA (DB-15) adapter included Dual-video Support with optional DVI-I to DVI-D plus VGA-monitor splitter cable (sold separately) Four USB 2.0 ports (2 on front, 2 on back) Two PS/2 ports One Mic In One Line Out Enhanced PS/2 Keyboard with Windows Keys (104 keys) and PS/2 Optical mouse included
Networking	10/100/1000 Base-T Gigabit Ethernet Cisco CCX Certified internal 802.11 b/g/n (optional) eliminates theft of external wireless adapters
Display	VESA monitor support with Display Data Control (DDC) for automatic setting of resolution and refresh rate Dual monitor supported Single: 1920x1200@60Hz, Color depth: 8, 15, 16, 24 or 32bpp, Two independent full resolution frame buffers Dual: 1920x1200@60Hz, Color Depth: 8, 15, 16, 24 or 32bpp.

Audio	Output: 1/8-inch mini jack, full 16 bit stereo Input: 1/8-inch mini jack, 8 bit microphone
Physical characteristics	Height: 1.38 inches (34mm) Width: 6.94 inches (177mm) Depth: 4.75 inches (121mm)
Shipping Weight	6 lbs. (2.7kg)
Mountings	Horizontal feet Optional VESA mounting bracket
Device Security	Built-in Kensington security slot (cable sold separately)
Power	Worldwide auto-sensing 100-240 VAC, 50/60 Hz. Energy Star® V.5.0 compliant power supply Average power usage with device connected to 1 keyboard with 1 PS/2 mouse and 1 monitor: Under 7 Watts
Temperature Range	Horizontal: 10-35 C (50-95 F), Vertical: 10-40 C (50- 104 F)
Humidity	20% to 80% condensing 10% to 95% non-condensing
Certifications	German EKI-ITB 2000, ISO 9241-3/-8 cULus 60950, TÜV-GS, EN 60950 FCC Class B, CE, VCCI, C-Tick WEEE, RoHS Compliant Energy Star® Compliant
Warranty	Three-year hardware warranty. Visit our web site for WyseChoice extensions and upgrades



Start

Models

Features

Technical

Print

WYSE
I I I I

Wyse ThinOS Software specifications

ICA 11.x Compatible Client

- HDX Mediastream
- HDX Realtime
- HDX IntelliCache
- HDX Broadcast (Branch Repeater)
- Broad USB Support (with Wyse TCX)
- Progressive Display
- Desktop Restart (XenDesktop)
- Smartcard authentication and redirection
- Flash Video Support (with TCX)
- Seamless Windows
- Session Reliability
- Access Gateway Support (CSG mode)

RDP 6.x Compatible Client

- Up to 32-bit color depth connections
- Dual Monitor Support (hardware dependant)
- Smartcard authentication and redirection
- Rich Multimedia (with Wyse TCX)
- Broad USB Support (with Wyse TCX)
- Bidirectional Audio (with Wyse TCX)
- Flash Video support (with TCX)
- Disk drive redirection
- WAN Acceleration (with Wyse VDA)

VMware View 4.0 client

- Smartcard Authentication
- Restart VM
- Bi-directional Audio (with TCX)
- SSL Tunneling
- Multimedia Support (with TCX)
- Flash Video Support (with TCX)
- SecureID Authentication
- Broad USB Support (with TCX)
- WAN Acceleration (with VDA)

Roaming smart card vendor support

Enables smart card users to not only roam from station to station but also access the same virtual environment support regardless of which station they are connecting from. Wyse ThinOS provides 'out-of-the-box' smart card support for vendors such as Gemalto .NET, Aladdin, and ActiveIdentity - supported within Citrix, VMware and Microsoft environments. Users benefit from secure login and roaming desktop support so they can access their environments from any suitably equipped Wyse thin computing environment.

Wyse TCX

Advanced support for innovative Wyse TCX virtualization software that both works with *and enhances* ICA and RDP (instead of replacing them) featuring:

- Wyse TCX Multimedia - the power to run rich multimedia files formats utilizing Wyse Collaborative Processing Architecture (CPA) that intelligently redirects the necessary processing tasks between the client and the server.
- Wyse TCX Multi-Display - ensures that windows and dialogue boxes behave the way users expect when using more than one monitor.
- Wyse TCX USB Virtualizer - makes client attached USB devices visible to virtual desktops and applications, with full IT control.
- Wyse TCX Rich Sound - enables virtual desktops and applications to receive and transmit high quality audio without compromise.
- Wyse TCX Flash Acceleration - helps users of thin clients to experience improved Flash performance.

Wyse Virtual Desktop Accelerator

Delivers the best user experience for the allocated network bandwidth. New Wyse Virtual Desktop Accelerator neutralises the effects of network latency and packet loss, making 'thin' more suitable for more remote-site, branch, or field-based users - and boosts RDP and ICA up to 20 times on networks with latencies up to and exceeding 300ms and at least 768kbps bandwidth.

Management made easy Security built in

Fast booting, scalable administration includes simple drag and drop placement of firmware, automatic updates via file server and full integration with Wyse Device Manager. With no published API Wyse ThinOS is inherently secure from viruses and malware. Wyse ThinOS includes robust wired and wireless 802.1x support, with secure encryption for simple installation and management.

Server OS Infrastructure Support

- Citrix XenDesktop
- Citrix XenApp / Citrix Presentation Server
- Microsoft Windows Terminal Server 2003 / 2008
- Support for other leading VDI brokers (Quest Software, Leostream, etc)
- VMware View



Start

Models

Features

Technical

Print

WYSE
I T I

Microsoft Windows CE 6.0 WFR3 Software specifications

Firmware features

Microsoft Windows CE 6.0 WFR3
Microsoft Internet Explorer 6.0 resident:
HTML, JavaScript, XML, Active X as custom
Citrix ICA 10.x resident
Citrix Web Interface
RDP 6.0 resident
VMware View Client Resident
CCID compliant Smart Card Readers support
Ericom PowerTerm® Terminal Emulation
provides 30-plus terminal emulation
Jetcet 5.0
Media Player 9.0
Terminal Services Advanced Client (TSAC)
ThinPrint ICAVC and Thinprint RDP
VNC support in CE 6.0
WinCE 6 eStar B category certification

Server OS Infrastructure Support

Citrix XenApp / Citrix Presentation Server
Citrix XenDesktop
VMware View
Microsoft Windows Terminal Server 2003 / 2008

Set-up and Configuration

User interface
Boot from local flash

Protocol Support

TCP/IP, DNS, DHCP, PXE, PPP, PC/SC and ISO-7816
smart-card support

Management

Remote management, configuration and upgrades
through Wyse Device Manager
Send messages
Complete image upgrade
Wake terminal remotely (Wake-on LAN)
Terminal configuration (IP information, etc)
Remote screen shadowing of entire desktop
(Wyse Remote Shadow)
Reporting
Altiris Deployment via add-on

Wireless support

802.11 b/g/n support with internal wireless adapter
IEEE 802.1X
WEP, WPA, and WPA-2 wireless authentication
Internal WiFi default encryptions: MD5, PAP, TLS
Supports USB wireless adapters from:
Cisco, D-Link, Netgear, US Robotics, Trendware



Start

Models

Features

Technical

Print

WYSE
I I I I

SUSE Linux Enterprise Thin Client Software specifications

Firmware features

SUSE Linux Enterprise Thin Client 11
Automatic Central Configuration (text-based INI's)
Automatic Upgrades (FTP, HTTP, HTTPS)
Secure, read-only file system with lockdown abilities
RDESKTOP 1.6 client
Citrix ICA 11 client (w/ HDX Mediasream, Plug-n-Play, Realtime, etc)
VMware View 4.0 client
Ericom PowerTerm® Terminal Emulation
Cisco, Juniper, Nortel, IPSEC VPN Support (Add-ons)
Local/Remote Printing support (CUPS, LPR/LPD, Samba, ThinPrint,etc)
Web-based applications (Firefox, Flash, JAVA,etc)
XDMCP
SSH

Server OS Compatibility/Support

Citrix XenApp / Citrix Presentation Server
Citrix XenDesktop
VMware View
Microsoft Windows Terminal Server 2003 & 2008

Keyboard language support

100+ Keyboard Layouts supported locally (English, German, Spanish, French, Italian, Dutch, Chinese, Japanese, Turkish)

Management made easy

Automatic, “hands-off” configuration and upgrading of clients without the need for device management software. Optionally, administrators can choose to integrate with Wyse Device Manager (WDM) for more hands-on control:

- Complete image upgrade
- Wake terminal remotely (Wake-on LAN)
- Remote screen shadowing of entire desktop (VNC)
- Asset management and reporting

Wireless support

WPA Personal, WPA2 Personal, WPA Enterprise, WPA Enterprise Authentication support
PEAP/TLS: PAP/MSCHAP/MSCHAPV2 support

Wyse TCX Suite

Advanced support for innovative Wyse TCX virtualization software that both works with and enhances ICA and RDP (instead of replacing them) featuring:

- Wyse TCX Multimedia - the power to run rich multimedia files formats utilizing Wyse Collaborative Processing Architecture (CPA) that intelligently redirects the necessary processing tasks between the client and the server.
- Wyse TCX Multi-Display - ensures that windows and dialogue boxes behave the way users expect when using more than one monitor.
- Wyse TCX USB Virtualizer - makes client attached USB devices visible to virtual desktops and applications, with full IT control.
- Wyse TCX Rich Sound - enables virtual desktops and applications to receive and transmit high quality audio without compromise.
- Wyse TCX Flash Acceleration - helps users of thin clients to experience improved Flash performance.

Wyse Virtual Desktop Accelerator

Wyse Virtual Desktop Accelerator Delivers the best user experience for the allocated network bandwidth. New Wyse Virtual Desktop Accelerator neutralizes the effects of network latency and packet loss, making ‘thin’ more suitable for more remote-site, branch, or field-based users - and boosts RDP and ICA up to 20 times on networks with latencies up to and exceeding 300ms and at least 768kbps bandwidth.



Start

Models

Features

Technical

Print

WYSE
I I I I

Microsoft Windows XP Embedded SP3 Software specifications

Firmware features	Microsoft Windows XP Embedded SP3 Microsoft Internet Explorer 7.0 resident: HTML, JavaScript, XML, Active X Sun JRE, Media Player, Citrix Web Interface RDP 6.0.xx resident Citrix ICA 11 resident VMware View Client Resident Ericom PowerTerm [®] Terminal Emulation provides 30-plus terminal emulations Windows Media Player 11, .NET 3.0 SP1
Memory	1GB of flash memory and 1GB of RAM
Server OS Infrastructure Support	Citrix XenApp / Citrix Presentation Server Citrix XenDesktop VMware View Microsoft Windows Terminal Server 2003 & 2008
Set-up and Configuration	Boot from local flash Microsoft Windows XP user interface languages: U.S. English, French, German, Spanish, Optional add-ons
Keyboard language support	U.S. English (standard), French, German, Spanish, U.K. English, 40 other languages included
Protocol Support	TCP/IP, DNS, DHCP, PXE
Management	Remote management, configuration, and upgrades through Wyse Device Manager Complete image upgrade Wake terminal remotely (Wake-on LAN) Terminal configuration (IP information, name, etc.) Remote screen shadowing of entire desktop (Wyse Remote Shadow)

Reporting, Asset management
SMS
Altiris

Wireless support 802.11 b/g/n support with internal wireless adapter
WPA-2, WEP, WPA wireless authentication
Supports wireless adapters from: Cisco, D-Link, Netgear, US Robotics, Trendware

Plug-ins Adobe Flash Player
Adobe Shockwave

Wyse TCX Suite Advanced support for innovative Wyse TCX Suite virtualization software that both works with *and enhances* ICA and RDP (instead of replacing them) featuring:

- Wyse TCX Multimedia - the power to run rich multimedia files formats utilizing Wyse Collaborative Processing Architecture (CPA) that intelligently redirects the necessary processing tasks between the client and the server.
- Wyse TCX Multi-Display - ensures that windows and dialogue boxes behave the way users expect when using more than one monitor.
- Wyse TCX USB Virtualizer - makes client attached USB devices visible to virtual desktops and applications, with full IT control.
- Wyse TCX Rich Sound - enables virtual desktops and applications to receive and transmit high quality audio without compromise.
- Wyse TCX Flash Acceleration - helps users of thin clients to experience improved Flash performance.



Start

Models

Features

Technical

Print

WYSE
I T I

Microsoft Windows Embedded Standard Software specifications

Firmware features	<p>Microsoft Windows Embedded Standard (WES)</p> <p>Microsoft Internet Explorer 8.0 resident: HTML, JavaScript, XML, Active X</p> <p>Sun JRE, Media Player, Citrix Web Interface</p> <p>RDP 7.0 resident</p> <p>Citrix ICA 11.2 resident</p> <p>VMware View 4.0.1 client resident</p> <p>Ericom PowerTerm® Terminal Emulation provides 30-plus terminal emulations</p> <p>Windows Media Player 11, .NET 3.5</p>
Server OS Infrastructure Support	<p>Citrix XenApp / Citrix Presentation Server</p> <p>Citrix XenDesktop</p> <p>VMware View</p> <p>Microsoft Windows Terminal Server 2003 & 2008</p>
Application Framework	.Net 3.5
Security	<p>File Based Write Filter (FBWF)</p> <p>Microsoft Baseline Security Analyzer (MBSA)</p>
Set-up and Configuration	<p>Boot from local flash</p> <p>Microsoft Windows WES user interface languages: U.S. English, French, German, Spanish, Optional add-ons</p>
Keyboard language support	U.S. English (standard), French, German, Spanish, U.K. English, 40 other languages included
Protocol Support	TCP/IP, DNS, DHCP, PXE
Management	<p>Remote management, configuration, and upgrades through Wyse Device Manager</p> <p>Complete image upgrade</p> <p>Wake terminal remotely (Wake-on LAN)</p>

Terminal configuration (IP information, name, etc.)

Remote screen shadowing of entire desktop (Wyse Remote Shadow)

Reporting, Asset management

SMS

Altiris

Wireless support

802.11 b/g/n support with external wireless adapter or internal wireless adapter option

WPA-2, WEP, WPA wireless authentication

PEAP-GTC wireless authentication protocol with optional Juniper Odyssey Client

Supports PC-Card wireless adapters from: Cisco, D-Link, Netgear, US Robotics, Trendware

Plug-ins

Adobe Flash Player

Adobe Shockwave

Microsoft Silverlight

Wyse TCX Suite

Advanced support for innovative Wyse TCX Suite virtualization software that both works with *and enhances* ICA and RDP (instead of replacing them) featuring:

- Wyse TCX Multimedia - the power to run rich multimedia files formats utilizing Wyse Collaborative Processing Architecture (CPA) that intelligently redirects the necessary processing tasks between the client and the server.
- Wyse TCX Multi-Display - ensures that windows and dialogue boxes behave the way users expect when using more than one monitor.
- Wyse TCX USB Virtualizer - makes client attached USB devices visible to virtual desktops and applications, with full IT control.
- Wyse TCX Rich Sound - enables virtual desktops and applications to receive and transmit high quality audio without compromise.
- Wyse TCX Flash Acceleration - helps users of thin clients to experience improved Flash performance.



Start

Models

Features

Technical

Print

WYSE
I T I

Wyse WSM Software Specifications

Device Hardware Requirements

Windows XP Pro

- Minimum processor speed 800 MHz (1GHz or higher is recommended)
- Mind. 256 MB (1GB or higher is recommended)

Vista and Windows 7

- Minimum processor speed 1 GHz (1.5GHz or higher is recommended)
- Mind. 1 GB (2GB or higher is recommended)

- Flash size/local storage – none needed. If the device has flash it can be used as a local cache for offline mode.

Server Requirements

- Minimum processor speed 1GHz (3GHz or higher is recommended).

- Server Operating System: Windows XP Pro SP3, Windows Server 2003, Windows Server 2008 and 2008 R2

Network Requirements

- Server Lan Speed = Minimum 100Mbps (1Gbps and up is recommended).
- Device Lan Speed = Minimum 10Mbps (100 Mbps full duplex is recommended)

Operating Systems Supported

- Microsoft Windows XP
- Microsoft Windows Vista.
- Microsoft Windows 7.

Databases supported

- Microsoft SQL 2005 and 2008 (Server and Express Editions).

Built-in high Availability

- Database availability using SQL clustering.
- Built-in server high availability through WSM Server Grouping feature.
- Server to Server Fail-over Capability.

Fast and Easy Installation

- Installing Wyse WSM is simply a matter of running a single, graphical installer.
- The installer checks for all the prerequisite components before installation.

Web-based Admin Console

- Allows IT administrators to access Wyse WSM from any browser.
- Control the entire installation from a central location.
- Dramatically simplifies administration, saving IT time and user downtime.
- Wizards to guide the user through specific tasks.

Operation System and Application Imaging Tools

- Imaging tool simplifies the process of creating an OS image for the specific hardware configuration and an application image for all hardware configurations.
- All OS and application images are ready for deployment once created, no further modifications needed.

Application Subscription Management

- Use flexible application deployment methods:
 - Auto-subscribed applications are ready for use when user logs in for the first time.
 - Manual subscriptions allow users the flexibility to use applications only when needed.
 - Mandatory subscriptions that cannot be unsubscribed by users.

Protected System Drive

- Allows administrators to protect the system drive from enduser initiated updates.
- Prevents changes to operating system drive except by administrators, helping stop viruses, spyware, or malware from infecting the device.



Start

Models

Features

Technical

Print

WYSE
I I I I

Wyse WSM Software Specifications *continued*

Operating System Streaming

- Wyse WSM provides an on-demand operating system to Zero Clients and/or diskless PCs on the network.
- Only those bits needed for the normal device operation are sent in order to reduce network traffic.
- Innovative technology makes each Zero Client and/or diskless PC think there is a virtual hard disk attached to the device.
- Operating-system images can be shared across multiple devices, making management easier.

Flexible Boot Options

- Each device can boot from four operating system image assignments.
- Administrators can assign or let users choose which operating system they want to boot.
- First disk mode for the default OS image to boot from every time device starts up.
- First available mode to boot from the first responding server in order to balance loads.

Application License Management and Metering

- Wyse WSM provides the infrastructure to collect information about the application license-usage across the enterprise. This information allows IT organizations to save money associated with application licenses.
- Licenses can be stored for all the applications deployed. It also enforces license compliance.
- Types of licenses that can be controlled include:
 - Time-based licenses (valid for X days).
 - Number of concurrent users.

Modes of Operation

Wyse WSM allows administrators to choose modes of operation for the operating system:

- **Private Mode** – for administration of operating system images.
- **Shared Mode** – has two additional modes of normal operation:
 - *Volatile* – returns desktop to pristine state after a device reboot.
 - *Persistent* – remembers any user settings after a device reboot.

Remote Servers for Scalability

- IT administrators can deploy multiple remote servers to improve scalability of the overall solution.
- Central management of remote servers allows easy deployment of the solution across different geographic locations.

Comprehensive Reporting

- Easy ad-hoc reporting based on flexible parameters.
- Reports are delivered through HTML, giving you the flexibility to output in any form.
- License-metering reports can be used to make proactive purchasing decisions.
- License-audit reports can be used for compliance purposes.

Desktop Compatibility

- Wyse WSM works with Wyse COOLE, V00L/E, R00L/E and X00C/L family Zero Clients as well as with existing thin clients, reconfigured diskless personal computers, and virtual-desktop systems.



Start

Models

Features

Technical

Print

WYSE
I I I I

Wyse C class™ thin clients

WYSE

Small size **big performance**

Summary Data



Wyse C class clients

High performance. Inside out.

Inside every compact, Wyse C class lies a punchy VIA C7 1 GHz processor and an advanced hardware graphics accelerator delivering rich multimedia and video playback up to 1080p HD resolution.

Outside, you'll find advanced DVI-I display connectivity for one or two displays, four free USB 2.0 ports, PS/2 ports for keyboard and mouse, gigabit Ethernet and optional WiFi (b/g/n) support.

Fits round you.

On the desk or out of sight; Wyse C class fits around you. Every Wyse C class includes a monorail mount that lets you choose how and where to fit it: horizontally, vertically, directly to walls, under desks ...and even fitted discretely to the rear of standard desktop displays.

Compact. Clever. Capable.

Creating highly productive, fully functional and compact virtual desktops has never been easier. Each Wyse C class features full support for the Wyse TCX™ Suite of user enhancements - that includes multiple display support, multimedia playback, rich bi-directional audio, Flash acceleration and USB peripheral connectivity - and Wyse WSM™ zero client provisioning software delivering a PC experience on a thin or 'zero client'.

Cool performance. Cooler workspaces.

Designing these levels of high processing and graphics performance into such a compact space hasn't been at the expense of energy consumption and heat emissions either. Each Wyse C class draws under 7 watts of power - creating cooler working environments - in every respect.

Choice of operating systems.

Six models are available featuring Wyse ThinOS, Windows CE, Windows XP Embedded & Windows Embedded Standard operating systems, SUSE Linux Enterprise Thin Client - and a zero client model for Wyse WSM provisioning.

Features

Performance

VIA C7 1 GHz processor and advanced hardware graphics accelerator for rich multimedia and video playback up to 1080p HD resolution.

Connectivity

Advanced DVI-I display connectivity for one or two displays, four free USB 2.0 ports, PS/2 ports for keyboard and mouse, gigabit Ethernet and optional WiFi (b/g/n) support.

Mounting options

Horizontal standing desktop feet. Can be mounted to walls and backs of monitors.

Green

Draws under 7 watts of power when connected to one keyboard, PS/2 mouse and monitor.

Management

Features Wyse Device Manager software (workgroup edition).

Virtualization

Delivers the best user experience through full support for the Wyse TCX Suite of virtualized desktop enhancement software and Wyse VDA - acceleration software that reduces the effects of network latency.

Wyse WSM provisioning software

Provides compact, energy efficient and productive 'Zero Clients' with all the dynamic user experience of PCs - without their risks and complexities.

Wyse ThinOS

Featuring the blisteringly fast Wyse ThinOS designed for high security environments.

SUSE Linux Enterprise Thin Client

The only enterprise-quality Linux that's optimized for thin computing.

Microsoft CE 6

Componentized real-time operating system for small footprint devices.

Microsoft Windows XP Embedded

Windows XP Embedded - runs thousands of existing Windows applications and drivers on thin clients.

Microsoft Windows Embedded Standard

Take advantage of the power of Microsoft Windows Embedded Standard.

Wyse C class thin clients Hardware specifications

Processors	VIA C7 1GHz
Chipset	VIA VX855
Memory	C class with Wyse ThinOS (C10LE): 128MB Flash / 512MB RAM DDR2 C class with Windows CE (C30LE): 128MB Flash / 512MB RAM DDR2 C class with SUSE Linux (C50LE): 1GB Flash / 1GB RAM DDR2 C class with Windows XP Embedded (C90LE): 1GB Flash / 1GB RAM DDR2 C class with Windows Embedded Standard (WES) (C90LEW): 2GB Flash / 1GB RAM DDR2 C class for Wyse WSM (C00LE): 0GB Flash / 1GB RAM DDR2
Maximum memory Configuration	Flash up to 4GB / RAM up to 2GB
I/O peripheral support	One DVI-I port, DVI to VGA (DB-15) adapter included Dual-video Support with optional DVI-I to DVI-D plus VGA-monitor splitter cable (sold separately) Four USB 2.0 ports (2 on front, 2 on back) Two PS/2 ports One Mic In One Line Out Enhanced PS/2 Keyboard with Windows Keys (104 keys) and PS/2 Optical mouse included
Networking	10/100/1000 Base-T Gigabit Ethernet Cisco CCX Certified internal 802.11 b/g/n (optional) eliminates theft of external wireless adapters
Display	VESA monitor support with Display Data Control (DDC) for automatic setting of resolution and refresh rate Dual monitor supported Single: 1920x1200@60Hz, Color depth: 8, 15, 16, 24 or 32bpp, Two independent full resolution frame buffers Dual: 1920x1200@60Hz, Color Depth: 8, 15, 16, 24 or 32bpp.
Audio	Output: 1/8-inch mini jack, full 16 bit stereo Input: 1/8-inch mini jack, 8 bit microphone
Physical characteristics	Height: 1.38 inches (34mm) Width: 6.94 inches (177mm) Depth: 4.75 inches (121mm)
Shipping Weight	6 lbs. (2.7kg)
Mountings	Horizontal feet Optional VESA mounting bracket
Device Security	Built-in Kensington security slot (cable sold separately)
Power	Worldwide auto-sensing 100-240 VAC, 50/60 Hz. Energy Star® V.5.0 compliant power supply Average power usage with device connected to 1 keyboard with 1 PS/2 mouse and 1 monitor: Under 7 Watts
Temperature Range	Horizontal: 10-35 C (50-95 F), Vertical: 10-40 C (50- 104 F)
Humidity	20% to 80% condensing 10% to 95% non-condensing
Certifications	German EKI-ITB 2000, ISO 9241-3/-8 cULus 60950, TÜV-GS, EN 60950 FCC Class B, CE, VCCI, C-Tick WEEE, RoHS Compliant Energy Star® Compliant
Warranty	Three-year hardware warranty. Visit our web site for WyseChoice extensions and upgrades



Wyse Technology Inc.
3471 North First Street
San Jose, CA 95134-1801

Visit our website at:
<http://www.wyse.com>
Or send email to:
sales@wyse.com

Wyse Sales
800 GET WYSE
(800 438 9973)

Wyse Customer Service Center:
800 800 WYSE
(800 800 9973)

WYSE
| | | |