



## KPM180H

### Compact ticket printer for OEM integration

- Best print quality (200dpi or 300dpi)
- Adjustable paper width: from 20mm to 82.5mm
- Paper thickness: from 70 to 255 gr/m2
- Paper roll or fan fold tickets
- Printing > 200 mm/s
- Tear off or cutter (1Ml cuts) with optional dispenser
- Label processing (tear off and cutter)
- Print head life: 100Km
- 1D and 2D barcode printing: UPC-A, UPC-E, EAN13, EAN8, CODE39, ITF, CODABAR, CODE93, CODE128, CODE32, PDF417, DATAMATRIX, AZTEC, QR CODE
- RS232 / USB / Ethernet interfaces
- Drag&drop for graphics and logos
- True Font character support; Font: any language available
- Sensors: Head temperature, paper presence, mobile detectors of black mark or translucent gap/hole (setting by software), cover open, external low paper



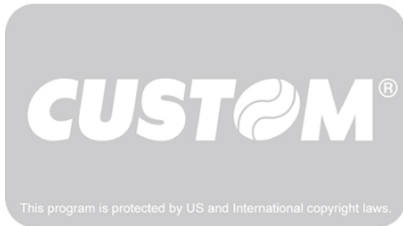
## CHARACTERISTICS

- The smallest printer on the market!
- Powerful processor inside (2MB flash)
- Hot swap function
- Automatic ticket ejector (optional)
- SNAP-IN power supply connector and ON/OFF button
- Back connections, feed and print buttons, both at the front and back

## APPLICATIONS:

- Coupon/voucher printing
- Boarding pass and luggage tag printer (AEA)
- Parking tickets
- Metro and bus tickets
- Self service ticketing
- Theme parks ticketing
- Healthcare wristband printing

## SOFTWARE:



**SOFTWARE PrinterSet** : to update logos, edit characters, set operating parameters and update the printer firmware. It allows you to create a file including the different SW customizations and send them to the printer via the interface provided, for easy and fast setting.

- Remote Status Monitor
  - Auto-installing drivers for Win XP, Win Vista,7, 8, 10 (32/64 bit compatible), Linux Driver (C.U.P.S.) 32/64 bit compatible
  - CUSTOM operating system
  - Printing from Android and iOS devices
  - CustomPowerTool
-

## ACCESSORIES

The ejector found in the cutter optional module may be programmed in two modes. This makes the printer extremely flexible in terms of compatibility, and easy to integrate in any kiosk:

- Cut and hold => the ticket is held after cutting, until the user collects it. This function is recommended for installations where the printer is directly connected to the outside of the kiosk.
- Cut and drop => in kiosks equipped with ticket outlet chute, the ejector can be programmed so as to eject the ticket and drop it. It should be assured that the ticket is delivered to the customer and does not remain inside the kiosk.

Wi-Fi or Bluetooth module available

---

**TECHNICAL SHEET**

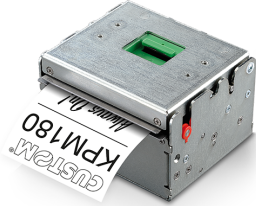
<b>Printing Method</b>	Thermal with fixed head
Number of dots	8 dots/mm to 200 dpi 12 dot/mm to 300 dpi
Resolution	200 dpi or 300 dpi
Printing (mm/sec)	200 mm/sec to 200 dpi 150 mm/sec to 300 dpi
Character set	PC437, PC850, PC860, PC863, PC865, International
Supported Barcode	UPC-A, UPC-E, EAN13,EAN8, CODE39, ITF, CODABAR, CODE93, CODE128, CODE32, PDF417, DATAMATRIX, AZTEC, QRCODE
Printing Format	Height and width from 1 to 8, bold, reverse, underlined, italic
Printing Direction	Straight, 90°, 180°, 270°
Paper width	from 20 mm to 82.5 mm
Paper weight	from 70 to 255 g/m <sup>2</sup>
Paper thickness	Max 270 $\mu$ m
Printing width	80 mm
Emulation	CUSTOM/POS, SVELTA
Interfaces	RS232 / USB / Ethernet
Data Buffer	16 Kbytes
Flash Memory	1 Mbytes internal + 8 Mbytes external (of which 4Mbytes available for user)
RAM Memory	128 Kbytes internal + 8 Mbytes external
Graphic Memory	"Drag&Drop" graphics and logo
Drivers	Win XP, Win Vista,7, 8, 10 (32/64 bit compatible), Linux Driver(C.U.P.S.) 32/64 bit compatible, Android, iOS
Software Tools	PrinterSet; Status Monitor, CustomPowerTool
Power supply	24 Vdc $\pm$ 10%
Medium consumption	1.5A (12.5% dots turned on)
MTBF	113,000 hours (electronic board)
Head Life	100Km / 100M pulses
MCBF	1,000,000 cuts (optional)
Operating temperature	-10°C to +60°C
Dimensions	97.5 (L) x 67 (H) x 108 (W) mm
Weight	0.8 Kg

**MODELS**



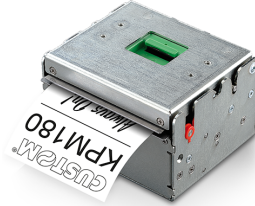
**915AH020900700**

PRINTER KPM180H CUTTER  
PRESENTER UHF



**915AH020600700**

PRINTER KPM180H ETH USB  
RS232



**915AH021400700**

PRINTER KPM180H ETH USB  
RS232 300



**915AH020300700**

PRINTER KPM180H+CUTTER  
PRESENTER

---

CUSTOM SPA - Via Berettine, 2 - 43010 Fontevivo PR - VAT: IT02498250345 - TEL: +39 0521 680111 - FAX: +39 0521 610701 - UNIQUE CODE: T180W10

The technical data on this website are not binding and may be changed without advanced notice.

Last update: 20 December 2019