



Office document management centre.  
Cost-effective. Convenience.

HP Officejet 9100 all-in-one series





# HP Officejet 9100 all-in-one series

—the 6-in-1 printer (scan, print, copy, fax, photo-print and digital send)



## Digital send<sup>1</sup>

Scan to email. Scan to network.  
Send photos to email or network



## Fax

Stores up to 250 pages of incoming fax (4 MB flash memory)



## Memory card slots

Direct photo printing from memory cards (Secure Digital card, Smart Media, MultiMediaCard™, Memory Stick, CompactFlash I and CompactFlash II)



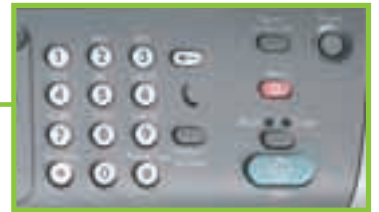
## Print

Fast print speed of up to 25 black/  
22 colour ppm



## Scan

Fast scanning to PC or network



## Copy

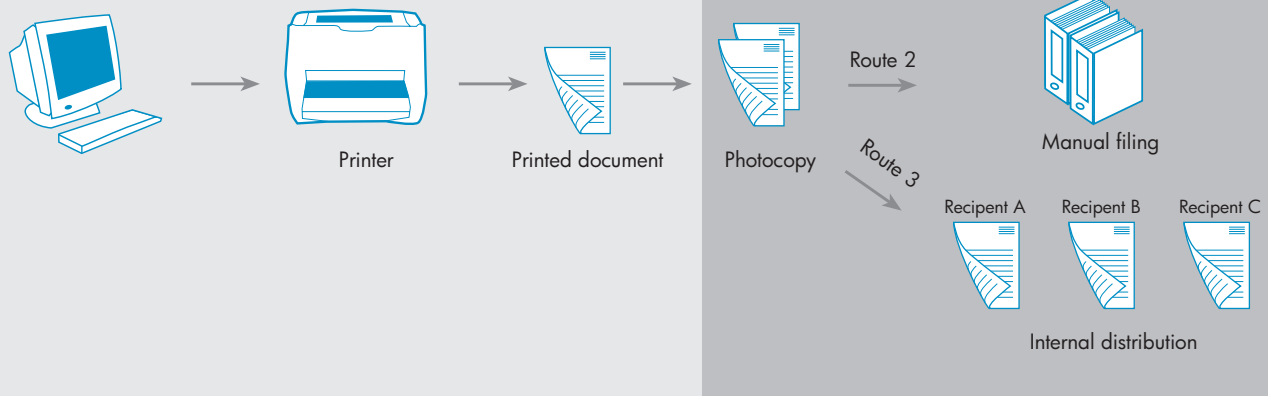
50-sheet reversing Automatic Document Feeder effortlessly handles up to A4 documents



<sup>1</sup>Digital sending and the localised keyboard are optional features for HP Officejet 9110 and HP Officejet 9120 all-in-one models.

# Workflow productivity—the convenient 6-in-1 document centre

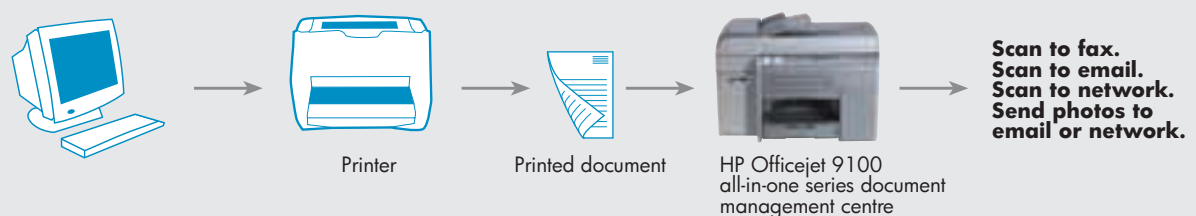
## Traditional document workflow



“Traditional hardcopy printing and imaging process can claim between 20 to 40 percent of a company’s total labour cost, while producing, printing, distributing and storing documents can account for between 5 to 15 percent of a company’s annual revenue.”  
—Datamation

Traditional hardcopy document workflow requires multiple hardcopies of documents for internal and external distribution, and archiving. This results in high consumable costs and increased clerical work that has no bearing on improving productivity.

## Document workflow with digital send<sup>1</sup>



Digital workflow decreases the amount of hardcopy generated, streamlining workflow and increasing worker’s efficiency and productivity.

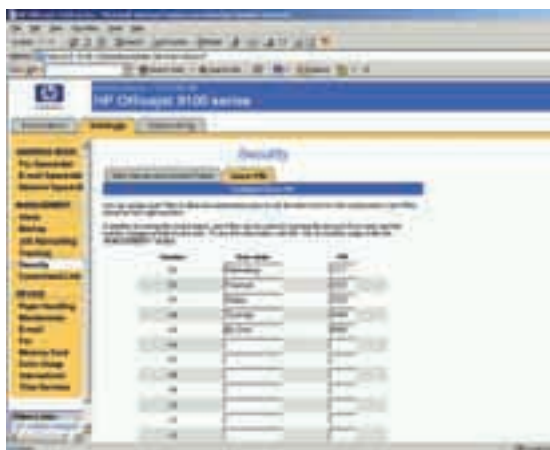
With digital send<sup>1</sup>, documents are digitised once, then distributed electronically via email, across a network or via fax, thus reducing consumable and operational cost. Archiving documents digitally will also ease document retrieval, while reducing storage cost.

<sup>1</sup>Digital sending and the localised keyboard are optional features for HP Officejet 9110 and HP Officejet 9120 all-in-one models.

# Enhance your workflow productivity



Track print jobs quickly and simply with Job Accounting



Security features prevent unauthorised use and helps keep track of individual usage

## Digital sending functions

- Send to e-mail (LDAP support)—saves time, paper and mailing expenses.
- Send to network folders (supports HP AutoStore)—for quick and easy self-service archiving.
- Email images direct from photo memory cards to network folders.
- Automatically archive incoming analog faxes to e-mail or network folders.
- Use keyboard to navigate network folders, enter e-mail addresses and subject lines.
- Configure speed-dial buttons for frequently used e-mail addresses.

## Remote device management

- Protect HP embedded web server and control panel settings with an Administrator's PIN. Administrator's password can also be synchronised with walk-up control panel PIN.
- Set individual PIN access for each user to eliminate unauthorised use and monitor device usage.
- Job Accounting software tracks data on each copy or print job, providing information on user, job type, time executed, number of pages, media type, print quality setting and ink cartridge usage.
- Collates data to enable global and individual statistical usage information.
- Check device status or perform remote diagnostic via the optional HP Web Jetadmin.

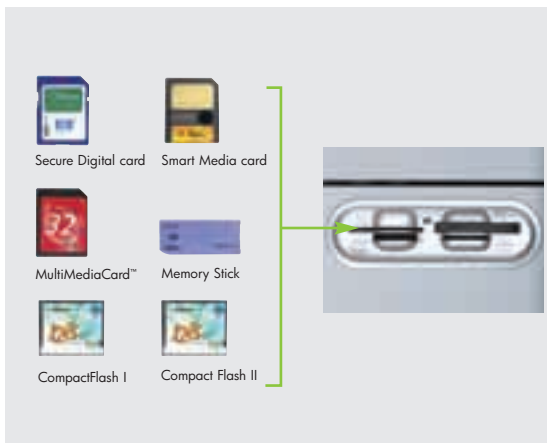
## Optional HP AutoStore

- Automate workflows with HP AutoStore, a feature-rich content management solution.
- Using the HP Officejet 9100 all-in-one series, hardcopy documents are scanned and sent to a designated network folder with digital send. HP AutoStore can be programmed to retrieve these documents and route them for storage or further processing.

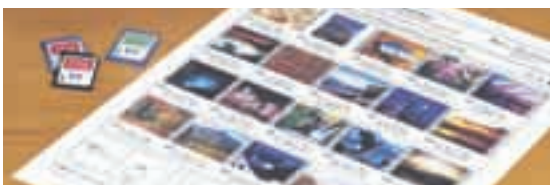
# All-in-one business productivity



Less user intervention with 50-sheet Automatic Document Feeder



Memory card slots that takes all—takes Secure Digital/CompactFlash/Memory Stick/Smart Media/MultiMediaCards™



Print only what you need with HP Photo Proof Sheet



Dual CCD scanning technology allows you to scan small 3D objects

## Print

- Fast first copy out in approximately 12 seconds.
- Print speed of up to 25 pages per minute (ppm) black and 22 ppm colour<sup>1</sup>.
- Get true-to-life brilliant photo quality images with 4800-optimised dpi<sup>2</sup> colour printing.
- 128 MB standard memory, upgradeable to 384 MB, and powerful 256 and 133 MHz processors quickly handles complex print jobs.
- Two tray input capacity with up to 400 sheets<sup>3</sup> handles extensive copy jobs.
- Optional 500-sheet second tray.

## Fax

- 99-fax number speed-dial makes sending faxes simple.
- 50-sheet Auto Document Feeder enables unattended faxing.
- Fast sending speeds of up to 33.6 kbps.
- Store up to 250 fax pages in 4 MB of flash memory.
- Colour fax, PC fax (for direct connections), delayed faxing, digital send and more.

## Scan

- Quick scan documents at up to 11 ppm with reversing automatic document feeder.
- Up to 2400 x 2400 dpi optical scanning resolution (up to 19200 dpi enhanced) with 48-bit colour depth.
- Image capture small 3D objects with HP's dual CCD scanning technology.
- Industry standard TWAIN compatible scan drivers.

## Copy

- Scans copy job into memory and duplicate without originals—users can walk away with originals and return later for copies.
- Automatic collation lets you copy and sort multiple documents without frustration.
- Auto duplexing for 2-sided copying reduces your paper cost.

## Photo-print

- Direct photo printing for businesses from Secure Digital card, Smart Media, MultiMediaCard™, Memory Stick, CompactFlash I and CompactFlash II.

## Effortless multitasking

- Scan a job, send or receive a fax and print simultaneously.
- Scan-once-print-many feature allows you to scan job into memory and return for the copies at your convenience.

<sup>1</sup> Approximate figures in Fast Mode. Exact speed depends on system configuration, software programs, media and document complexity.

<sup>2</sup> On HP Premium Photo Papers.

<sup>3</sup> For HP Officejet 9120 and HP Officejet 9130. 150-sheet single tray for HP Officejet 9110.

# Lower your operating cost

## Designed to be cost effective

- Modular high capacity ink cartridge system. Replace only the ink you use.
- Durable printheads give long lasting performance.
- Unique wet-wiping system minimises printhead nozzle clogging.
- Up to 10,000 pages per month duty cycle handles heavy usage.
- Auto-duplexing (2-sided printing and copying) out-of-the-box.
- Colour correct features—allow business to manage colour copying, colour faxing, colour scanning and printing from photo/memory card.

## Award winning reliability

HP's reliability backed by a heritage of HP quality and reliable performance. For twelve years, Hewlett-Packard has consistently received the top grade in the annual PC Magazine™ Service and Reliability Survey and recently received one of the first A+ ratings ever given.

# Designed to grow with your office business environment

## Achieve robust networking with HP Jetdirect internal EIO print servers<sup>1</sup>

- Provide the simplest, most reliable way to share printing devices with up to 15 users.
- Supports Internet protocols such as TCP/IP for versatile intranet administration.
- Supports 802.1X authentication to protect access to your network.
- Enhanced network configuration and management features include password-protected configuration, Secure Sockets Layer (SSL), Transport Layer Security (TLS), and Simple Network Management Protocol (SNMP) Version 3 to keep your network safe.
- Throughput speeds of up to 6 MB/second for maximum network performance.
- Wireless 802.11b networking enabled with optional HP Jetdirect 680n EIO internal print server.

## Expandable capabilities to meet your business growth

- Upgrade to digital sending capabilities for added convenience.
- Optional 250-sheet or 500-sheet trays further reduce intervention by providing a paper capacity of up to 650-sheet.
- Two memory card slots allow you to enhance printing performance by adding up to 256 MB of additional RAM.

<sup>1</sup> Optional feature for HP Officejet 9110 all-in-one.



Replace only what you use with modular ink cartridge system



August 5, 2003  
OVERALL PRINTERS  
Hewlett-Packard Company

Earning the top grade for the 12th consecutive year—PC Magazine



Optional HP Jetdirect 680n EIO internal print server enables wireless networking



Increase paper capacity and decrease user intervention with optional 250-sheet or 500-sheet Tray 2

# Easy to use, manage and maintain

## Easy to use walk-up controls

### Speed Dial Area

Provides quick access to frequently used fax numbers & email addresses.

### Large backlit LCD

Most common task options are displayed in the LCD for quick visual status check before pressing START.

### Mode Button Area

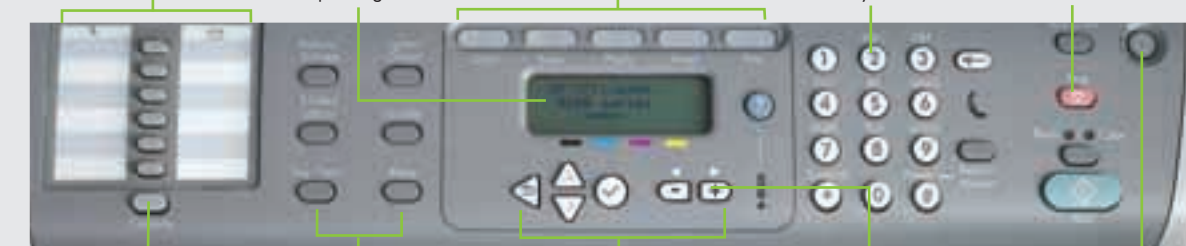
Provide direct access to the five major functions.

### Easy Data Entry

Number & SMS-styled keypad with Backspace key & Email symbols for simpler data entry & collection.

### Stop button

Allows selective cancellation of walkup jobs without affecting remote print job.



### Contacts button

Provides quick access to incoming & outgoing history lists and stored contacts data.

### Option buttons

Provide quick access to commonly used task parameters.

### Frequently used buttons

Only a few buttons are required to interact with the simple software user interface.

### Wrap-around LED

For easy visibility in a workgroup environment.

### Start/Stop Area

Familiar Large Copier style single Start button for starting any job.

## HP embedded Web server features

- Configure the speed-dial buttons for quick faxing and digital sending to e-mail addresses and network folders.
- View device support information and save and restore device settings.
- Perform diagnostic tests and troubleshoot problems.
- Assignment of pin for the administrator to control who can remotely access the settings and networking tabs.
- Disable photo memory card use and colour faxing and copying feature to save costs.

## Manage all your HP devices with HP Toolbox

- Monitors all device information, including device status, ink levels, printhead health, documentation and self-help.
- Provides troubleshooting tips.
- Links directly to HP Instant Support for direct web access to device information and services.
- In a network environment, links to the HP embedded Web server.



HP Toolbox provides a single access point to all product information

## Manage your print usage with MyPrintMileage

- Provides a customised analysis of device usage, such as the ink cartridges in use, ink usage, and also forecasts ink cartridges use for a one year period.
- Tracks number of pages printed for each function and the average number of pages printed per month for media type and media size.



HP embedded Web server lets you change device and network configuration remotely



# HP Officejet 9100 series all-in-one

1. Easy-to-use control panel provides a familiar copier interface and instant access to each of the product's five different modes
2. Retractable keyboard enables efficient digital sending
3. Separate ink cartridges and printheads for cost-effective operation
4. 100-sheet output tray
5. 150-sheet multipurpose Tray 1 and 250-sheet Tray 2 for a 400-sheet total input capacity
6. Photo memory card support for printing and sending digital images
7. 50-sheet reversing automatic document feeder effortlessly handles up to legal-sized documents
8. 128 MB of standard memory and powerful 256 and 133 MHz processors perform complex tasks quickly
9. HP Jetdirect 620n Fast Ethernet internal EIO print server enables high-performance networking for up to 15 users
10. Built-in USB and parallel ports
11. Automatic two-sided printing unit



## HP Officejet 9130 all-in-one shown



### HP Officejet 9110 all-in-one (C8140A)

- 150-sheet multipurpose tray
- One open EIO slot for optional network connectivity
- Optional digital sending with keyboard
- Optional 250-sheet or 500-sheet input Tray 2



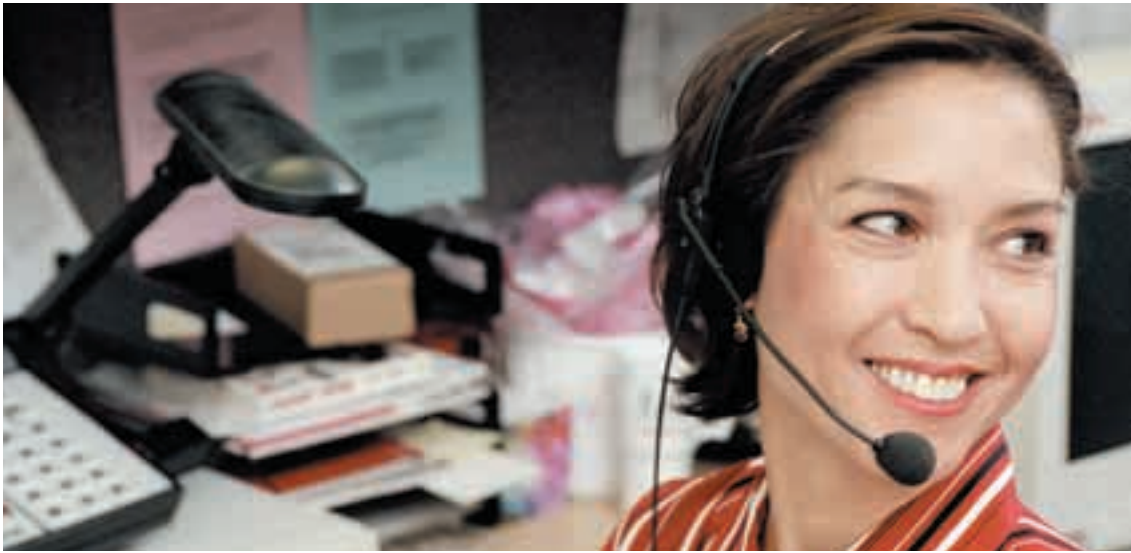
### HP Officejet 9120 all-in-one (C8143A)

- All the features of the HP 9110 all-in-one base model, plus:
- Standard 250-sheet input Tray 2 for a 400-sheet input capacity
  - HP Jetdirect 620n Fast Ethernet internal EIO print server installed in the EIO slot
  - Optional 500-sheet input Tray 2



### HP Officejet 9130 all-in-one (C8144A)

- All the features of the 9120 model, plus:
- Digital sending
  - Keyboard (enables efficient digital sending)



## HP worldwide customer service and support: The HP assurance

For greater peace of mind, every HP product comes with award winning HP service and support—HP Customer Care. Our highly experienced and knowledgeable customer service professionals are there to help you—online ([www.hp.com/support](http://www.hp.com/support)), via email or on the phone for fast response—round the clock, round the globe in as many as 18 languages. You will get professional advice on using your HP product, assistance with setup and installation, help with troubleshooting, details on warranty and repair options, fast product replacement, software upgrades and more.

Our wide range of warranty and repair options give you maximum flexibility and convenience—you can return your product directly to HP or your local retailer or a HP repair centre<sup>1</sup>. If you choose to do the repairs yourself, you can trust HP to quickly deliver all the parts that you need.

## HP Pay per use

HP Pay per use provides everything your company needs for a reliable imaging and printing environment. This comprehensive service combines the hardware, services, support, supplies and financing to provide you with flexible payment options of level pay, base plus click and cost per page. The HP Pay per use allows customers to reduce their Total Costs of Ownership (TCO) and increase their print-related workflow productivity.

## HP Imaging and Printing services can help you

HP's Imaging and Printing services is committed to helping you get the most value from your imaging and printing environment. Our comprehensive portfolio of services that combines consulting, integration, management and support services to simplify your imaging and printing infrastructure, streamline your business operations and sharpen your customer communications. HP Imaging and Printing services bring the depth of imaging and printing expertise that can transform the way businesses communicate, while uncovering and capturing entirely new levels of productivity, efficiency and cost savings.

<sup>1</sup> Service and support options and availability vary by product, country/region and language.



9 consecutive years—  
ComputerWorld Readers'  
Choice Awards

### The science of HP paper and inks

HP spends over US\$1 billion each year on printing and imaging research to deliver the best possible solutions for your business.

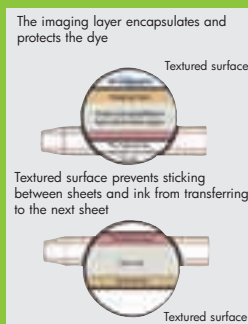
#### The best possible paper to match your HP inkjet printers

HP's Colourfast Photo Paper contains real innovation to bring your images to life, with three polymer layers that provide just the right level of absorption and retention for stunning images that can last up to 73 years\*. At HP, paper is not just paper.

#### HP print cartridges—the science of precision and control

HP has engineered into every print cartridge printheads that contain up to 500 nozzles, each nozzle accurately discharging up to 35,000 microscopic ink droplets per second. This ensures that every ink droplet is precisely controlled, for that perfect printed page.

\* Up to 73 years, based on Wilhelm Imaging Research, Inc., using the HP 58 Photo Inkjet print cartridge on HP Colourfast Glossy Photo Paper.



HP Officejet 9100  
all-in-one series

Technical specifications

HP Officejet 9110 all-in-one  
(Duplexer included)



HP Officejet 9120 all-in-one  
(Duplexer, network card,  
2nd tray included)



HP Officejet 9130 all-in-one  
(Duplexer, network card, 2nd tray,  
keyboard for digital sender included)



<b>Print technology</b>	Drop-on-demand thermal inkjet		
<b>Print speed<sup>1</sup> (letter/A4)</b>	Up to 25 ppm black and 22 ppm colour text in Fast mode (up to 9 ppm black and 8.5 ppm colour text in Normal mode)		
<b>First page out</b>	Approximately 12 seconds		
<b>Resolution</b>	Up to 2400 x 2400 dpi scanning, HP PhotoREt 3 enhanced colour-layering technology (up to 4800 x 1200-optimised dpi colour printing) on HP Premium Photo Papers		
<b>Digital sending interface</b>	Optional keyboard	Optional keyboard	Keyboard
<b>Processor</b>	256 MHz Motorola 32-bit ColdFire 4e RISC, 133 MHz ARM9 RISC		
<b>Memory</b>	128 MB built-in SDRAM; expandable to 384 MB with two open industry-standard 100-pin SDRAM DIMM slots (128 MB per slot)		
<b>Duty cycle</b>	Up to 10,000 pages per month		
<b>Media handling</b>	150-sheet multipurpose tray, 50-sheet reversing automatic document feeder, duplexer unit for printing and copying, 100-sheet output tray	150-sheet multipurpose tray, 250-sheet input tray, 50-sheet reversing automatic document feeder, duplexer unit for printing and copying, 100-sheet output tray	150-sheet multipurpose tray, 250-sheet input tray, 50-sheet reversing automatic document feeder, duplexer unit for printing and copying, 100-sheet output tray
<b>Output capacity</b>	100-sheet		
<b>Sizes</b>	Tray 1: 76.2 x 127 mm to 216 x 356 mm (3 x 5 inches to 8.5 x 14 inches); Tray 2: 182 x 257 mm to 216 x 356 mm (7 x 10 inches to 8.5 x 14 inches) A4, A5, A6, B5		
<b>Weights</b>	Tray 1: 60 to 200 g/m <sup>2</sup> (16 to 110 lb); Tray 2: 60 to 105 g/m <sup>2</sup> (16 to 28 lb); Automatic two-sided printing unit: 60 to 160 g/m <sup>2</sup> (16 to 90 lb)		
<b>Types</b>	Paper (plain, inkjet, photo), envelopes, transparencies, labels, cards (index, greeting)		
<b>Connectivity Interfaces</b>	USB 2.0 compliant full speed port, IEEE 1284 compliant parallel port, one open EIO slot	USB 2.0 compliant full speed port, IEEE 1284 compliant parallel port, one HP Jetdirect 620n Fast Ethernet internal EIO print server	USB 2.0 compliant full speed port, IEEE 1284 compliant parallel port, one HP Jetdirect 620n Fast Ethernet internal EIO print server
<b>Photo memory card formats</b>	CompactFlash I & II, Memory Stick, Secure Digital, Smart Media, and MultiMediaCard™		
<b>Languages and fonts</b>	HP PCL 6, HP PCL 5c, and HP PostScript® level 3 emulation, with automatic language switching; 45 TrueType and 35 PostScript fonts built-in (all PostScript emulation, PCL 5c, and PCL 6 accessible); Intellifont and TrueType rasteriser built into PCL 5c and PCL 6; Built-in support for Arabic, Cyrillic, Greek, and Hebrew symbol sets		
<b>Client operating systems</b>	Microsoft® Windows 98, ME, 2000, XP 32-bit (Professional and Home editions); Mac OS 9.2 and OS X (10.1.x to 10.3.x); print functionality only for Windows NT 4.0, XP 64-bit edition; OS/2; Linux; UNIX®; MS-DOS third-party printer driver support		
<b>Network operating systems</b>	Via HP Jetdirect print servers: Windows 98, ME, NT 4.0, 2000, XP 32-bit (Professional and Home Editions), and XP 64-bit Edition; Windows 2003 Server; Novell NetWare 4.x, 5.x, 6; NDS; NDPS; HP-UX 10.20, 11.x; Solaris 2.6, 7, 8 (SPARC systems only); RedHat Linux 7.1 and later; SuSE Linux 7.1 and later; Mac OS 9.2x and later; IBM OS/2 Warp®; IBM AIX 3.2.5 and later; MPE-iX®; Microsoft Windows Terminal Server Edition 4.0 <sup>2</sup> ; Windows 2000 Server Terminal Services with Citrix MetaFrame 1.8; Windows XP Server Terminal Services with Citrix MetaFrame 1.8		
<b>Dimensions (w x d x h)</b>	574 x 460 x 397 mm (22.6 x 18.1 x 15.6 inches)	574 x 460 x 462 mm (22.6 x 18.1 x 18.2 inches)	574 x 460 x 462 mm (22.6 x 18.1 x 18.2 inches)
<b>Weight</b>	20 kg (44.1 lb)	24.1 kg (53.1 lb) (includes Tray 2)	24.1 kg (53.1 lb) (includes Tray 2)
<b>What's in the box</b>	Duplexer, power cord, phone cord, HP 10 black ink cartridge (26.5 ml), HP 11 cyan ink cartridge (28 ml), HP 11 magenta ink cartridge (28 ml), HP 11 yellow ink cartridge (28 ml), HP 11 black printhead, HP 11 cyan printhead, HP 11 magenta printhead, HP 11 yellow printheads, Getting Started Guide, CDs	Duplexer, power cord, phone cord, HP 10 black ink cartridge (26.5 ml), HP 11 cyan ink cartridge (28 ml), HP 11 magenta ink cartridge (28 ml), HP 11 yellow ink cartridge (28 ml), HP 11 black printhead, HP 11 cyan printhead, HP 11 magenta printhead, HP 11 yellow printheads, Getting Started Guide, CDs, HP Jetdirect 620n Fast Ethernet internal EIO print server, 250-sheet input Tray 2	Duplexer, power cord, phone cord, HP 10 black ink cartridge (26.5 ml), HP 11 cyan ink cartridge (28 ml), HP 11 magenta ink cartridge (28 ml), HP 11 yellow ink cartridge (28 ml), HP 11 black printhead, HP 11 cyan printhead, HP 11 magenta printhead, HP 11 yellow printheads, Getting Started Guide, CDs, HP Jetdirect 620n Fast Ethernet internal EIO print server, 250-sheet input Tray 2, keyboard
<b>Operating environment</b>	Operating temperature: 15 to 35° C (59 to 95° F), Storage temperature: -20 to 50° C (-4 to 122° F), Relative humidity: 15 to 80 percent, non-condensing		
<b>Acoustics (copying or printing in draft mode, noise levels per ISO 7779)</b>	Sound power: LwAm 6.6 dB(A) , Sound pressure: LpAm 53 dB(A)		
<b>Power specifications<sup>3</sup></b>	Built-in Universal Power Supply: 110 to 240 VAC (±10 percent), 50 to 60 Hz input voltage, Power consumption: < 1 watt power off, < 31 watts Standby, 77 watts max. copying; Energy Star compliant		
<b>Product certifications</b>	Safety certifications: CCC S & E (China), CSA (Canada), PSB (Singapore), UL (USA), NOM-NYCE (Mexico), GS (Germany), KTL (Korea), CE (European Union), B Mark (Poland), S Mark (Argentina), GOST (Russia) EMC certifications: EU (EMC Directive), USA (FCC Rules), Australia (A-Tick), Canada (ICES), China (CCC S & E), Korea (MIC), Taiwan (BSMI)		
<b>Warranty</b>	One-year limited hardware warranty		

<sup>1</sup> Approximate figures, based on printing with plain paper. Exact speed depends on system configuration, software programs and document complexity.

<sup>2</sup> Contact your network operating system vendor for software, documentation and support.

<sup>3</sup> Power requirements are based on the country/region where the printer is sold. Do not convert operating voltages. This will damage the printer and void the product warranty.

# HP all-in-one family line up

Technical specifications

## HP Officejet all-in-ones (colour)



**HP Officejet 7100 all-in-one series**  
printer/fax/scanner/copier



**HP Officejet 9110/9120/9130 all-in-ones**  
printer/fax/scanner/copier/digital send/photo-print

## HP LaserJet all-in-ones (monochrome)



**HP LaserJet 3015 all-in-one**  
printer/fax/scanner/copier

User group	SMB	SMB/Corporate	SOHO/SMB
<b>Product description</b>	Network-ready, compact Officejet all-in-one to help maximise your productivity	Office document management centre Cost-effective. Convenience.	HP's most affordable and compact LaserJet all-in-one. Get more than just a fax
<b>Print</b>			
Technology	Drop on demand thermal inkjet	Drop on demand thermal inkjet	Monochrome laser
First page out <sup>1</sup>	–	12 seconds	10 seconds
Speed (letter/A4) <sup>2</sup>	22 ppm black, 18 ppm colour	25 ppm black, 22 ppm colour	15 ppm, 14 ppm
Duty cycle	Up to 5,000 page per month	Up to 10,000 page per month	Up to 7,000 page per month
Printer language	HP PCL level 3 enhanced print driver	HP PCL 6 & 5c, HP PostScript level 3 emulation print drivers	HP PCL 6 & 5e, HP PostScript level 2 emulation print drivers
Resolution	4800 x 1200 dpi optimised <sup>5</sup>	4800 x 1200 dpi optimised <sup>5</sup>	1200 dpi effective output <sup>3</sup>
<b>Copy</b>			
Resolution	4800-optimised dpi <sup>5</sup>	Up to 2400 x 1200 dpi <sup>5</sup>	600 x 600 dpi <sup>3</sup>
Speed (letter/A4) <sup>2</sup>	22 ppm black, 24 ppm colour	22 ppm black, 24 ppm colour	15 cpm, 14 cpm
Reduce/enlarge	25% to 400%	25% to 400%	25% to 400%
Glass size	Up to A4	Up to A4	Sheet-fed
Maximum copies	Up to 99 copies	Up to 99 copies	Up to 99 copies
<b>Scan</b>			
Type (flatbed/sheet-fed)	Flat-bed	Flat-bed (Digital send)	Sheet-fed (Scan to email or folder)
Resolution	4800 x 1200 dpi optical resolution <sup>7</sup>	2400 x 2400 dpi optical resolution <sup>7</sup>	600 x 600 dpi optical resolution <sup>5</sup> (9600 dpi enhanced)
Bit depth	48-bit colour	48-bit colour	24-bit colour
<b>Fax</b>			
Speed (kbps)	33.6	33.6	33.6
Memory	Up to 130 speed dials, up to 125-page memory (depending on model)	99 speed dials, up to 250-page memory	120 speed dials, 110-page memory; 2 MB fax memory
ADF capacity	50-sheet	50-sheet	30-sheet
Fax settings	–	Send to email, send to network folder, fax archive, keyboard accessory	Send and receive fax from PC
<b>Paper handling</b>			
Output tray	–	100-sheet	125-sheet
Input tray	Up to 400-sheet (depending on model)	Up to 650 sheets (optional trays 2 and 3)	10-sheet priority, 150-sheet standard
Duplex	Automatic 2-sided	Automatic 2-sided	Manual (driver support required)
<b>Memory card slots</b>	Print from memory card CompactFlash I & II, Secure Digital, Memory Stick, Smart Media, MultiMediaCard <sup>8</sup>	Print from memory card CompactFlash I & II, Secure Digital, Memory Stick, Smart Media, MultiMediaCard <sup>8</sup>	–
<b>Digital send</b>	–	Send to e-mail; Send to network folder; Fax archive; Keyboard accessory	–
<b>Others</b>			
Memory	32 MB RAM	128 MB RAM (expandable to 384 MB), 4 MB Flash memory fax	32 MB RAM
Processor speed	–	256 MHz Motorola 32-bit ColdFire 4e RISC, 133 MHz ARM9 RISC	240 MHz Coldfire v 4e processor
OS compatibility	Microsoft® Windows® 98, 98 SE, 2000, ME, XP; Mac OS 9, OS X v10.1	Windows 98, 2000, ME, XP 32-bit edition, Mac OS 9.2, OS X (10.1.x to 10.3.x)	Microsoft Windows 98 SE, 2000, ME or XP and Mac OS 9.1, 9.2.x, OS X 10.2.x or higher
Networking/connectivity	USB port, Fast Ethernet port (10/100Base-TX) HP Jetdirect 200m print server (optional for Officejet 7130)	Bi-directional IEEE 1284 compliant parallel port, USB 2.0 port, HP Jetdirect 620n Fast Ethernet (10/100Base-TX) print server (optional for Officejet 9110)	IEEE 1284-B compliant parallel port, USB 2.0 port, optional HP Jetdirect external print server
<b>Software included</b>	HP Director, HP Scan-to-web, HP Creative Photo Projects, Readiris PRO Text Recognition Software	Installer/uninstaller, print drivers, Customisation Utility, TWAIN-compatible scan drivers, Readiris PRO Text Recognition Software, HP Toolbox, HP embedded Web server, HP photo and imaging software	Installer/uninstaller, HP toolbox, HP LaserJet Scan software, TWAIN and WIA scan drivers, HP LaserJet Fax, Readiris PRO Text Recognition Software, printer drivers. HP Director (Mac), HP all-in-one Setup Assistant (Mac)

<sup>1</sup> For both Ready and PowerSave modes. Figure is approximate for typical office documents and may vary according to system or network configuration and document complexity.

<sup>2</sup> Approximate figures based on printing with plain paper. Exact speed depends on system configuration, software program and document complexity.

<sup>3</sup> 600 x 600 dpi using HP Resolution Enhancement technology (REI) and HP FastRes 1200 technology.

<sup>4</sup> 1200 x 1200 dpi using HP Resolution Enhancement technology (REI) and HP FastRes 1200 technology.

<sup>5</sup> Up to 4800 x 1200-optimised dpi colour copying and printing (when printing from a computer) on premium photo papers and 1200 x 1200-input dpi.



**HP LaserJet 3020 all-in-one printer/scanner/copier**



**HP LaserJet 3030 all-in-one printer/fax/scanner/copier**



**HP LaserJet 3380 all-in-one printer/fax/scanner/copier**



**HP LaserJet 4100 mfp printer/fax/scanner/copier**

SOHO/SMB	SOHO/SMB	SMB/Corporate	SMB/Corporate
Convenient copier and colour scanner	Fast, professional print, copy, scan and fax with space-saving flatbed design	High performance. High productivity Networkable for small work team	Integrated multi-function solution for business workgroups
Monochrome laser	Monochrome laser	Monochrome laser	Monochrome laser
10 seconds	10 seconds	8 seconds	12 seconds
15 ppm, 14 ppm	15 ppm, 14 ppm	20 ppm, 19 ppm	25 ppm, 24 ppm
Up to 7,000 page per month	Up to 7,000 page per month	Up to 10,000 page per month	Up to 150,000 page per month
HP PCL 6 & 5e, HP PostScript level 2 emulation print drivers	HP PCL 6 & 5e, HP PostScript level 2 emulation print drivers	HP PCL 6 & 5e, HP PostScript level 2 emulation print drivers	HP PCL 6 & 5e, HP PostScript level 3 emulation print drivers
1200 dpi effective output <sup>3</sup>	1200 dpi effective output <sup>3</sup>	1200 x 1200 dpi <sup>4</sup>	1200 x 1200 dpi <sup>4</sup>
600 x 600 dpi <sup>3</sup>	600 x 600 dpi <sup>3</sup>	600 x 600 dpi <sup>3</sup>	1200 dpi output quality
15 cpm, 14 cpm	15 cpm, 14 cpm	20 ppm, 19 ppm	25 ppm, 24 ppm
25% to 400%	25% to 400%	25% to 400%	25% to 400%
Up to A4	Up to A4	Up to A4	Up to A4
Up to 99 copies	Up to 99 copies	Up to 99 copies	Up to 99 copies
Flat-bed	Flat-bed	Flat-bed	Flat-bed
600 x 600 dpi optical resolution <sup>6</sup> (9600 dpi enhanced)	600 x 600 dpi optical resolution <sup>6</sup> (9600 dpi enhanced)	600 x 600 dpi optical resolution <sup>6</sup> (9600 dpi enhanced)	600 x 600 dpi optical resolution <sup>6</sup>
24-bit colour	24-bit colour	24-bit colour	24-bit colour
-	33.6	33.6	-
-	120 speed dials, 110-page memory, 2 MB flash memory fax	120 speed dials, 250-page memory 4 MB Flash memory fax	-
50-sheet	50-sheet	50-sheet	30-sheet
-	Send and receive fax from PC	Send and receive fax from PC	-
125-sheet	125-sheet	125-sheet	300-sheet
10-sheet priority, 150-sheet standard	10-sheet priority, 150-sheet standard	10-sheet priority, 250-sheet standard	600-sheet standard
Manual (driver support required)	Manual (driver support required)	Manual (driver support required)	Automatic 2-sided
-	-	-	-
-	-	-	Send to e-mail; Send to network folder; Keyboard
32 MB RAM	32 MB RAM	32 MB RAM (expandable to 96 MB),	64 MB RAM (expandable to 256 MB)
240 MHz Coldfire v 4e processor	240 MHz Coldfire v 4e processor	240 MHz Coldfire v 4e processor	250 MHz processor
Windows 98 SE, 2000, ME and XP; Mac OS 9.1, 9.2x and Mac OS X v10.2.x or higher	Windows 98 SE, 2000, ME and XP; Mac OS 9.1, 9.2x and Mac OS X v10.2.x or higher	Windows 98 SE, 2000, ME and XP; Mac OS 9.1, 9.2.x, and Mac OS X v 10.2.x or higher	Windows 3.1x, 95, 98, 2000, ME, NT 4.0, XP PUX, Solaris, SunOS, IBM, OS/2 Warp, Mac OS 7.53 (or later) and MS-DOS
IEEE 1284-B compliant parallel port, USB 2.0 port, optional HP Jetdirect external print server	IEEE 1284-B compliant parallel port, USB 2.0 port, optional HP Jetdirect external print server	IEEE 1284-B compliant parallel port, USB 2.0 port optional HP Jetdirect external print server	Bi-directional IEEE 1284 compliant parallel port HP Jetdirect 615n (EIO) internal print server port for Fast Ethernet (10/100Base-TX) optional HP fast infrared port and receiver
Installer/uninstaller, HP Toolbox, HP LaserJet Scan software, TWAIN 1.9 and WIA scan drivers, Readiris PRO Text Recognition Software, printer drivers, HP Director (Mac), HP all-in-one Setup Assistant (Mac)	Installer/uninstaller, HP Toolbox, HP LaserJet Scan software, TWAIN 1.9 and WIA scan drivers, HP LaserJet Fax, Readiris PRO Text Recognition Software, printer drivers, HP Director (Mac), HP all-in-one Setup Assistant (Mac)	Installer/uninstaller, HP Toolbox, HP LaserJet Scan software, TWAIN 1.9 and WIA scanner drivers, HP LaserJet Fax, Electronic user's guide, Readiris PRO Text Recognition Software, HP Director (Mac)	-

<sup>6</sup> 9600 x 9600 dpi using HP Resolution Enhancement technology (REI) and HP FastRes 1200 technology.

<sup>7</sup> Up to 19 200 dpi using HP Resolution Enhancement technology (REI) and HP FastRes 1200 technology.

<sup>8</sup> Based on standard ITUT Test image #1 at standard resolution. More complicated pages or higher resolution will take longer and use more memory.

For more information, call your local Hewlett-Packard sales office or your nearest HP authorised dealer:

**HP customer information centre (for product information)**

Australia	132347
China	+86 21 2898 2255
Hong Kong	+852 800 938 833
India	+9628 123 123 (Del/Mum/Blr) +1600 444 999 (other cities)
Indonesia	Tel: +0800 1111 222 Fax: +0800 0333 444
Korea	+080 703 0700
Malaysia	+1800 88 4848
New Zealand	+0800 733 547
Philippines	+1800 1331 4488
Singapore	+1800 278 8100
Taiwan	+0800 236 686
Thailand	+662 353 9000
Vietnam	+848 823 6215

For the following countries, please fax your queries to: +65 6 275 6707

• Bangladesh • Brunei • Cambodia • Pakistan • Sri Lanka

**HP customer care centre (for post-sales service)**

Australia	+61 3 8877 8000
China	+86 10 6564 5959
Hong Kong	+852 800 96 7729
India	+1600 112 267
Indonesia	+62 21 350 3408
Korea	+82 2 3270 0700
Malaysia	+60 3 2695 2566
New Zealand	+64 9 356 6640
Philippines	+63 2 867 3551
Singapore	+65 6 272 5300
Taiwan	+886 2 8722 8000
Thailand	+662 353 9000
Vietnam	+848 823 4530

## Ordering information

Number	Description
C8140A	HP Officejet 9110 all-in-one
C8143A	HP Officejet 9120 all-in-one
C8144A	HP Officejet 9130 all-in-one

### Paper handling

C8237A	250-sheet input tray (Tray 2)
C8238A	500-sheet input tray (Tray 2)

### Ink cartridges

C4844A	HP 10 Black ink cartridge (69 ml)
C4836A	HP 11 Cyan ink cartridge (28 ml)
C4837A	HP 11 Magenta ink cartridge (28 ml)
C4838A	HP 11 Yellow ink cartridge (28 ml)

### Printheads

C4810A	HP 11 Black printhead
C4811A	HP 11 Cyan printhead
C4812A	HP 11 Magenta printhead
C4813A	HP 11 Yellow printhead

### Digital Sending

C8240A	Keyboard
NOB8535A	HP AutoStore – Base Software plus one license
NOB1297A	HP AutoStore – Licence pack, Europe & Asia * 1 license #UAU * 10 license #OA9 * 50 license #OAA

### Memory

Q9121A	128 MB SDRAM DIMM
Q1887A	64 MB SDRAM DIMM

### Cables

C2950A	IEEE 1284 Cable (a-b) 2 meter
C2951A	IEEE 1284 Cable (a-b) 3 meter
C6518A	USB Cable (a-b) 2 meter

### Network interfaces

J6057A	HP Jetdirect 615n* internal EIO print server (Fast Ethernet 10/100 Base TX)
J7934A	HP Jetdirect 620n internal EIO print server (Fast Ethernet 10/100 Base TX, 802.3)
J6058A	HP Jetdirect 680n* internal EIO print server (802.11b wireless Ethernet)

### Service and support

H4513A	HP Care Pack install 1 personal/workgroup printer
H3110A	HP Care Pack install 1 network configuration printer
U9814A/E	HP Care Pack 3 years return to depot
U9815A/E	HP Care Pack 3 years next day exchange
U9816A/E	HP Care Pack 3 years next day hardware

\*Supports printing and digital sending only

### For more information on

HP Care Pack, visit:  
<http://www.hp.com/apac/hpservices/carepack>

HP Instant Support Professional Edition (ISPE), visit:  
<http://www.instantsupport.asiapac.hp.com>

For more information on support, visit:  
<http://www.hp.com/support>

For more information on HP genuine parts, visit:  
<http://www.hp.com/go/hpparts>

To find out more about HP Colour Solutions, visit:  
<http://www.hp.com/hpincolor>

For specific warranty details, please check with your local country resellers.







© 2004 Hewlett-Packard Development Company, L.P.

The information contained herein is subject to change without notice. The only warranties for HP products and services are set forth in the express warranty statements accompanying such products and services. Nothing herein should be construed as constituting an additional warranty. HP shall not be liable for technical or editorial errors or omissions contained herein.

Printed in Singapore, 2001-1996-EEP, 02/2004