

User manual

SyncMaster S23A700D

The color and the appearance may differ depending on the product, and the specifications are subject to change without prior notice to improve the performance.

Before Using the Product

Copyright

The contents of this manual are subject to change without notice to improve quality.

© 2011 Samsung Electronics

Samsung Electronics owns the copyright for this manual.

Use or reproduction of this manual in parts or entirety without the authorization of Samsung Electronics is prohibited.

The SAMSUNG and SyncMaster logos are registered trademarks of Samsung Electronics.

Microsoft, Windows and Windows NT are registered trademarks of Microsoft Corporation.

VESA, DPM and DDC are registered trademarks of the Video Electronics Standards Association.





- An administration fee may be charged if either
 - (a) an engineer is called out at your request and there is no defect in the product (i.e. where you have failed to read this user manual).
 - (b) you bring the unit to a repair centre and there is no defect in the product (i.e. where you have failed to read this user manual).
- The amount of such administration charge will be advised to you before any work or home visit is carried out.

Icons used in this manual



The following images are for reference only. Real-life situations may differ from what is shown in the images.

Symbols for safety precautions

 Warning	A serious or fatal injury may result if instructions are not followed.
 Caution	Personal injury or damage to properties may result if instructions are not followed.
	Activities marked by this symbol are prohibited.
	Instructions marked by this symbol must be followed.

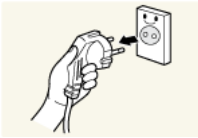
Before Using the Product

Cleaning

Cleaning

Exercise care when cleaning as the panel and exterior of advanced LCDs are easily scratched.

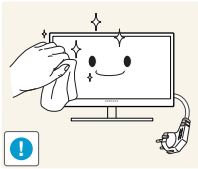
Take the following steps when cleaning.



1. Power off the monitor and computer.
2. Disconnect the power cord from the monitor.



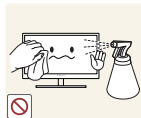
Hold the power cable by the plug and do not touch the cable with wet hands. Otherwise, an electric shock may result.



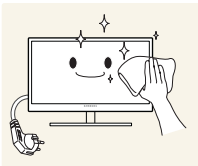
3. Wipe the monitor with a clean, soft and dry cloth.



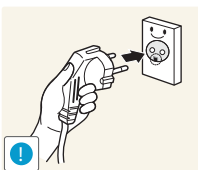
- Do not apply a cleaning agent that contains alcohol, solvent, or surfactant to the monitor.



- Do not spray water or detergent directly on the product.



4. Wet a soft and dry cloth in water and wring thoroughly to clean the exterior of the monitor.



5. Connect the power cord to the product after cleaning the product.
6. Power on the monitor and computer.

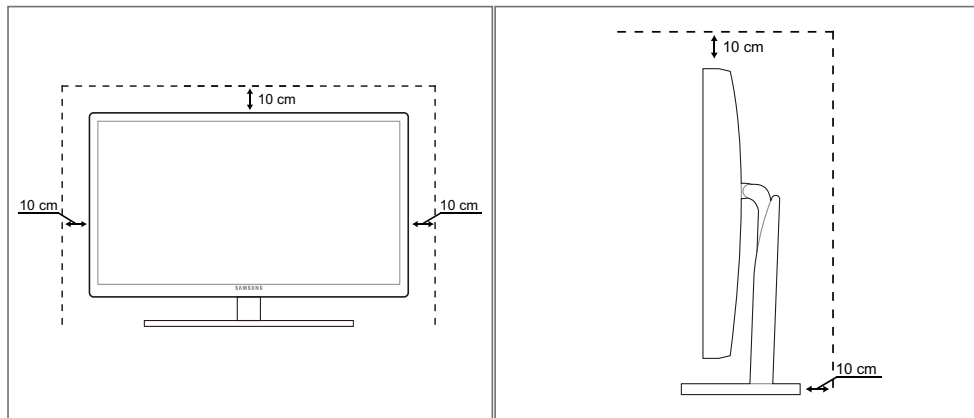
Before Using the Product

Securing the Installation Space

- Ensure some space around the product for ventilation. A rise in the internal temperature may cause a fire and damage the product. Be sure to allow the amount of space as shown below or greater when installing the product.



The exterior may differ depending on the product.



Precautions for Storage

High-glossy models can develop white stains on the surface if an ultrasonic wave humidifier is used nearby.



Be sure to contact Samsung Customer Service Center (page 78) if the inside of the monitor needs cleaning. (service fee will be charged).

Safety Precautions

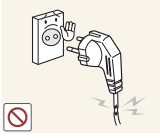
Electricity and Safety



The following images are for reference only. Real-life situations may differ from what is shown in the images.

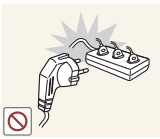
Before Using the Product

Warning



Do not use a damaged power cord or plug, or a loose power socket.

- An electric shock or fire may result.



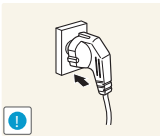
Do not plug many products into the same power socket.

- Otherwise, the socket may overheat and cause a fire.



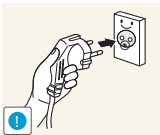
Do not touch the power plug with wet hands.

- Otherwise, an electric shock may result.



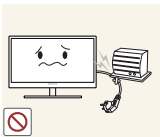
Insert the power plug all the way in so it is not loose.

- An unstable connection may cause a fire.



Connect the power plug to a grounded power socket (type 1 insulated devices only).

- An electric shock or injury may result.



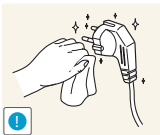
Do not bend or pull the power cord with force. Do not weigh the power cord down with a heavy object.

- A damaged power cord may cause an electric shock or fire.



Do not place the power cord or product near heat sources.

- An electric shock or fire may result.



Remove foreign substances such as dust around the plug pins and power socket with a dry cloth.

- Otherwise, a fire may result.

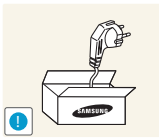
Before Using the Product

Caution



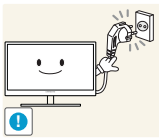
Do not unplug the power cord when the product is in use.

- The product may become damaged by an electric shock.



Do not use the power cord for products other than authorized products supplied by Samsung.

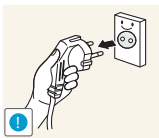
- An electric shock or fire may result.



Keep the power socket where the power cord is connected unobstructed.

- If any problem occurs in the product, unplug the power cable to completely cut the power to the product.

Power to the product cannot be completely cut off with the power button.

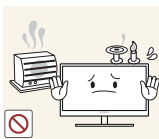


Hold the plug when disconnecting the power cord from the power socket.

- An electric shock or fire may result.

Installation

Warning



DO NOT PLACE CANDLES, INSECT REPELLANTS OR CIGARETTES ON TOP OF THE PRODUCT. DO NOT INSTALL THE PRODUCT NEAR HEAT SOURCES.

- Otherwise, a fire may result.



Avoid installing the product in a narrow space with bad ventilation, such as a bookshelf or wall closet.

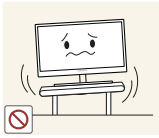
- Otherwise, a fire may result due to an increased internal temperature.



Keep the plastic packaging bag for the product in a place that cannot be reached by children.

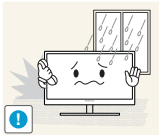
- Children may suffocate.

Before Using the Product



Do not install the product on an unstable or vibrating surface (insecure shelf, sloped surface, etc.).

- The product may fall and break or cause a personal injury.
- Using the product in an area with excess vibration may damage the product or cause a fire.



Do not install the product in a vehicle or a place exposed to dust, moisture (water drips, etc.), oil, or smoke.

- An electric shock or fire may result.



Do not expose the product to direct sunlight, heat, or a hot object such as a stove.

- Otherwise, the product lifespan may be reduced, or a fire may result.



Do not install the product within the reach of young children.

- The product may fall and injure children.

Caution



Take care not to drop the product when moving it.

- Otherwise, product failure or personal injury may result.



Do not set down the product on its front.

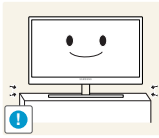
- The screen may become damaged.



When installing the product on a cabinet or shelf, make sure that the bottom edge of the front of the product is not protruding.

- The product may fall and break or cause a personal injury.
- Install the product only on cabinets or shelves of the right size.

Before Using the Product



Put down the product carefully.

- The product may fall and break or cause a personal injury.



Installing the product in an unusual place (a place exposed to a lot of fine particles, chemical substances or extreme temperatures, or an airport or train station where the product should operate continuously for an extended period of time) may seriously affect its performance.

- Be sure to consult Samsung Customer Service Center (page 78) before installation if you want to install the product at such a place.

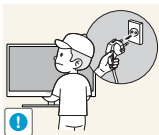
Operation

Warning



High voltage runs through the product. Do not attempt to disassemble, repair, or modify the product on your own.

- An electric shock or fire may result.
- Contact Samsung Customer Service Center (page 78) for repair.



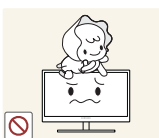
Before you move the product, be sure to turn off the power switch and remove all the cables connected to the product, including the power cord and the antenna cable.

- Otherwise, the power cord may be damaged and a fire or electric shock may result.



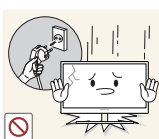
If the product generates a strange noise, a burning smell, or smoke, remove the power cord immediately and contact Samsung Customer Service Center (page 78).

- An electric shock or fire may result.



Do not let children hang from the product or climb on top of it.

- The product may fall, and your child may become injured or seriously harmed.



If the product falls or the exterior is damaged, power off the product, remove the power cord, and contact Samsung Customer Service Center (page 78).

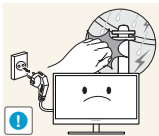
- Otherwise, an electric shock or fire may result.

Before Using the Product



Do not put a heavy object, toy, or sweets on top of the product.

- The product or heavy objects may fall as children try to reach for the toy or sweets resulting in a serious injury.



During a lightning or thunderstorm, remove the power cord and do not touch the antenna cable.

- An electric shock or fire may result.



Do not drop objects on the product or apply impact.

- An electric shock or fire may result.



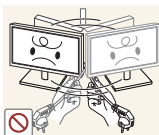
Do not move the product by pulling the power cord or any cable.

- Otherwise, the power cable may be damaged and product failure, an electric shock or fire may result.



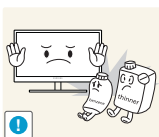
If a gas leakage is found, do not touch the product or power plug. Also, ventilate the area immediately.

- Sparks can cause an explosion or fire.
- During a lightning or thunderstorm, do not touch the power cord or antenna cable.



Do not lift or move the product by the power cord or any cable.

- Otherwise, the power cable may be damaged and product failure, an electric shock or fire may result.



Do not use or keep combustible spray or an inflammable substance near the product.

- An explosion or fire may result.



Ensure the vents are not blocked by tablecloths or curtains.

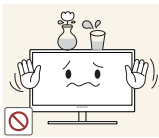
- Otherwise, a fire may result from an increased internal temperature.

Before Using the Product



Do not insert a metallic object (a chopstick, coin, hair pin, etc.) or inflammable object (paper, match, etc.) into the vent or ports of the product.

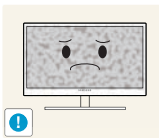
- If water or any foreign substance enters the product, be sure to power off the product, remove the power cord, and contact Samsung Customer Service Center (page 78).
- Product failure, an electric shock or fire may result.



Do not place objects containing liquid (vases, pots, bottles, etc) or metallic objects on top of the product.

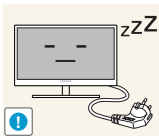
- If water or any foreign substance enters the product, be sure to power off the product, remove the power cord, and contact Samsung Customer Service Center (page 78).
- Product failure, an electric shock or fire may result.

Caution



Leaving the screen fixed on a stationary image for an extended period of time may cause afterimage burn-in or defective pixels.

- If you are not going to use the product for an extended period of time, activate power-saving mode or a moving-picture screen saver.



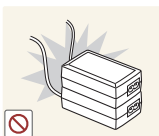
Disconnect the power cord from the power socket if you do not plan on using the product for an extended period of time (vacation, etc).

- Otherwise, a fire may result from accumulated dust, overheating, an electric shock, or electric leakage.



Use the product at the recommended resolution and frequency.

- Your eyesight may deteriorate.



Do not put DC power adapters together.

- Otherwise, a fire may result.



Remove the plastic bag from the DC power adapter before you use it.

- Otherwise, a fire may result.

Before Using the Product



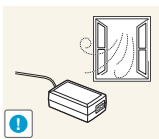
Do not let water enter the DC power device or get the device wet.

- An electric shock or fire may result.
- Avoid using the product outdoors where it can be exposed to rain or snow.
- Be careful not to get the DC power adapter wet when you wash the floor.

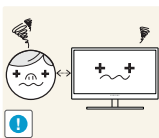


Do not put the DC power adapter near to any heating apparatus.

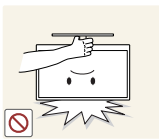
- Otherwise, a fire may result.



Keep the DC power adapter in a well-ventilated area.



Looking at the screen too close for an extended period of time can deteriorate your eyesight.



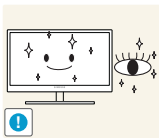
Do not hold the monitor upside-down or move it by holding the stand.

- The product may fall and break or cause a personal injury.



Do not use humidifiers or stoves around the product.

- An electric shock or fire may result.

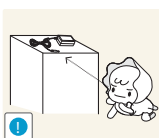


Rest your eyes for more than 5 minutes for every 1 hour of product use.

- Eye fatigue will be relieved.



Do not touch the screen when the product has been turned on for an extended period of time as it will become hot.



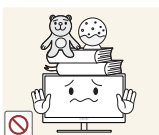
Store the small accessories used with the product out of reach of children.

Before Using the Product



Exercise caution when adjusting the product angle or stand height.

- Otherwise, children's fingers or hands may become stuck and injured.
- Tilting the product excessively may cause it to fall and result in personal injury.



Do not place heavy objects on the product.

- Product failure or personal injury may result.

Correct posture to use the product



Use the product in the correct posture as follows:

- Straighten your back.
- Allow a distance of 45 to 50cm between your eye and the screen, and look slightly downward at the screen.
Keep your eyes directly in front of the screen.
- Adjust the angle so light does not reflect on the screen.
- Keep your forearms perpendicular to your upper arms and level with the back of your hands.
- Keep your elbows at about a right angle.
- Adjust the height of the product so you can keep your knees bent at 90 degrees or more, your heels attached to the floor, and your arms lower than your heart.

Table Of Contents

BEFORE USING THE PRODUCT	2	Copyright
	2	Icons used in this manual
	2	Symbols for safety precautions
	3	Cleaning
	3	Cleaning
	4	Securing the Installation Space
	4	Precautions for Storage
	4	Safety Precautions
	4	Electricity and Safety
	6	Installation
	8	Operation
	12	Correct posture to use the product
PREPARATIONS	18	Checking the Contents
	18	Removing the Packaging
	19	Checking the Components
	20	Attaching the Stand
	22	Parts
	22	Frontal Buttons
	25	Reverse Side
	26	Tidying Up the Connected Cables
	26	Anti-theft Lock
	27	Adjusting the Product Tilt
	3D	3D
	28	3D Mode
	29	Depth
	30	L/R Change
	30	3D→2D
	31	Standard HDMI-Compatible Formats
	31	Resolution Supported for PC Input (via the HDMI Port)
	32	Playing 3D Games on a PC

Table Of Contents

	33	Precautions when Viewing 3D Video
CONNECTING AND USING A SOURCE DEVICE	34	Before Connecting
	34	Pre-connection Checkpoints
	35	Connecting the Power
	36	Connecting and Using a PC
	36	Connecting to a PC
	38	Driver Installation
	38	Changing the Resolution Using a PC
	40	Connecting to a Video Device
	40	Connection Using an HDMI Cable
	42	Setting Optimum Resolution
42	Connecting Headphones	
SCREEN SETUP	43	MAGIC
	43	SAMSUNG MAGIC Angle
	44	SAMSUNG MAGIC Bright
	45	SAMSUNG MAGIC Color
	46	Brightness
	46	Configuring Brightness
	47	Contrast
	47	Configuring Contrast
	48	Sharpness
	48	Configuring Sharpness
48	Response Time	
48	Configuring Response Time	
49	HDMI Black Level	
CONFIGURING TINT	50	Red
	50	Configuring Red

Table Of Contents

	50	Green
	50	Configuring Green
	51	Blue
	51	Configuring Blue
	52	Color Tone
	52	Configuring the Color Tone Settings
	53	Gamma
	53	Configuring Gamma
RESIZING OR RELOCATING THE SCREEN	54	Size
	54	Changing the Picture Size
	55	Horizontal Position
	55	Configuring H-Position
	55	Vertical Position
	55	Configuring V-Position
	56	Menu H-Position
	56	Configuring Menu H-Position
	57	Menu V-Position
	57	Configuring Menu V-Position
SETUP AND RESET	58	Eco Saving
	58	Menu Transparency
	58	Changing Menu Transparency
	59	Language
	59	Changing the Language
	60	PC/AV Mode
	60	Configuring PC/AV Mode
	61	Auto Source
	61	Configuring Auto Source

Table Of Contents

	61	Display Time
	61	Configuring Display Time
	62	Key Repeat Time
	62	Configuring Key Repeat Time
	63	Customized Key
	63	Configuring Customized Key
	63	Off Timer On/Off
	63	Configuring Off Timer On/Off
	64	Off Timer Setting
	64	Configuring Off Timer Setting
	65	Reset
	65	Initializing Settings (Reset)
INFORMATION MENU AND OTHERS	66	INFORMATION
	66	Displaying INFORMATION
	66	Configuring Brightness in the Startup Screen
	67	Configuring Volume in the Startup Screen
TROUBLESHOOTING GUIDE	68	Requirements Before Contacting Samsung Customer Service Center
	68	Testing the Product
	68	Checking the Resolution and Frequency
	68	Check the followings.
	71	Q & A
SPECIFICATIONS	73	General
	74	PowerSaver
	75	Standard Signal Mode Table

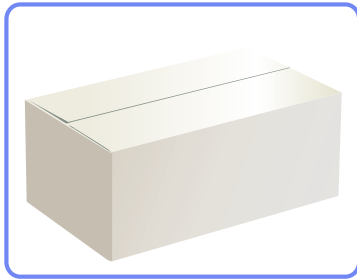
Table Of Contents

APPENDIX	78	Contact SAMSUNG WORLDWIDE
	82	Correct Disposal
	82	Correct Disposal of This Product (Waste Electrical & Electronic Equipment)
	82	Correct disposal of batteries in this product
	83	Terminology
INDEX		

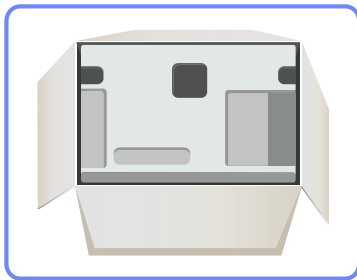
1.1 Checking the Contents

1.1.1 Removing the Packaging

- 1 Open the packaging box. Be careful not to damage the product when you open the packaging with a sharp instrument.



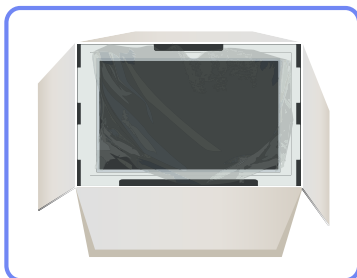
- 2 Remove the styrofoam from the product.



- 3 Check the components and remove the styrofoam and plastic bag.



- The appearance of actual components may differ from the image shown.
- This image is for reference only.



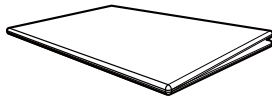
- 4 Store the box in a dry area so that it can be used when moving the product in the future.

1.1.2 Checking the Components



- Contact the dealer from whom you purchased the product if any item is missing.
- The appearance of the components and items sold separately may differ from the image shown.

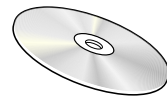
Components



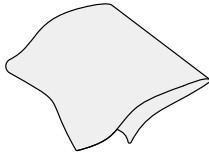
Quick setup guide



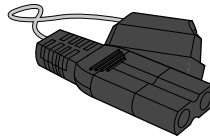
Warranty card
(Not available in some locations)



User manual



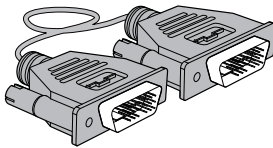
Cleaning cloth



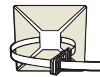
Power cable



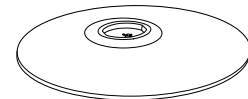
DC power adapter



DVI-Dual Cable



Wire holders



Stand Base



Stand Connector



3D Glasses & 3D Glasses
User Manual



Stand Assembly Guide

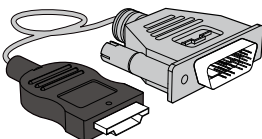


- Components may differ in different locations.
- The cleaning cloth is only supplied with the black high-glossy model.

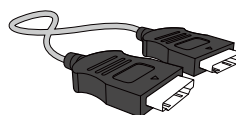
Items sold separately



The following items can be purchased at your nearest retailer.



HDMI-DVI cable

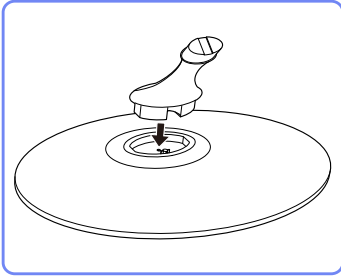


HDMI cable

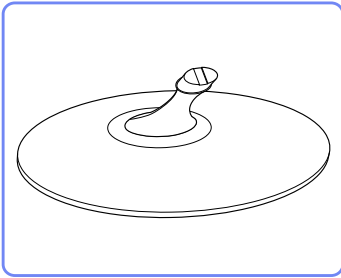
1.2 Attaching the Stand



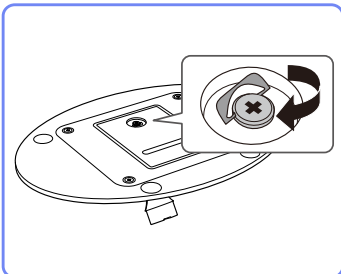
Before assembling the product, place the product down on a flat and stable surface so that the screen is facing downwards.



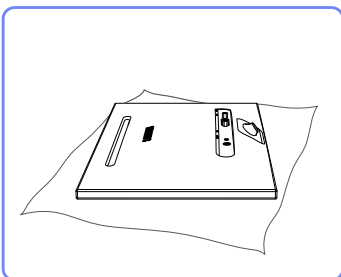
Insert the Stand Connector into the Stand in the direction shown by the figure.



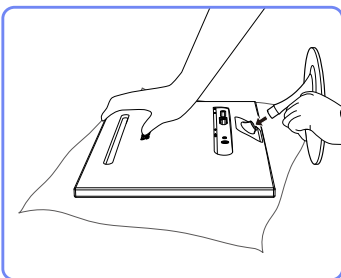
Check if the Stand Connector is firmly connected.



Turn the connecting screw at the bottom of the stand fully so that it is completely fixed.

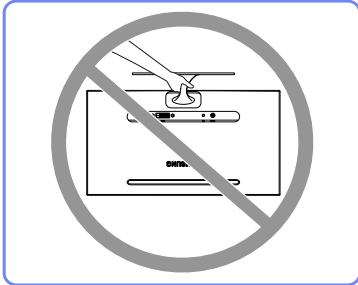


Place a soft cloth over the table to protect the product and place the product onto the cloth so that the front of the product is facing downwards.



Hold the main body of the product with your hand as shown by the figure. Push the assembled stand into the main body in the direction of the arrow as shown in the figure.

 **Caution**



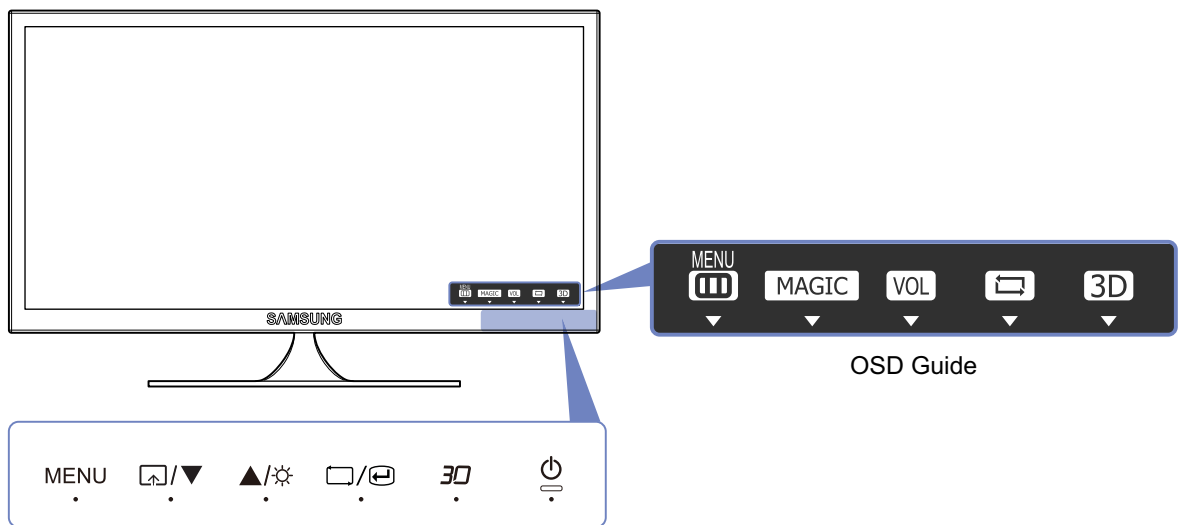
Avoid lifting the product holding only the stand.

1.3 Parts








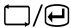
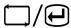
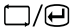
1.3.1 Frontal Buttons







The color and shape of parts may differ from what is shown. Specifications are subject to change without notice to improve quality.



- This is a touch-type button. Tap the button lightly with a finger.
- If you press a button on the front of the monitor, an OSD Guide will display showing the function of the button before the menu for the pressed button appears.
- To go to the menu, press the button on the front of the monitor again.
- OSD Guide may vary according to functions and models. Please refer to actual product.

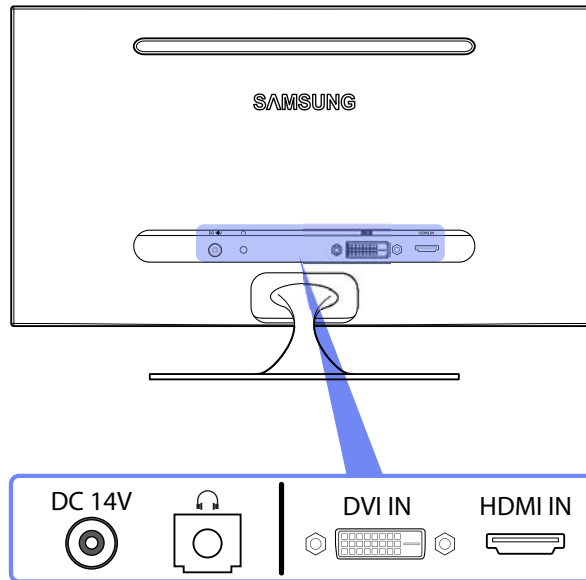
Icons	Description
MENU	<ul style="list-style-type: none"> • Open or close the onscreen display (OSD) menu, or return to the last menu. • OSD control lock: Maintain the current settings, or lock the OSD control to prevent unintended changes to settings. To lock the OSD control, press the [MENU] button for five seconds. To unlock the locked OSD control, press the [MENU] button for more than five seconds. <p> If the OSD control is locked,</p> <ul style="list-style-type: none"> • Only the menus 3D, MAGIC, Brightness, Contrast and INFORMATION are available for use.
	<p>When the OSD guide is displayed, the [/▼] button activates the function assigned to Customized Key.</p> <p>When the menu screen is displayed, the button functions as the (-) key to move to a lower menu or adjust the setting of an option.</p> <p>Configure Customized Key and press [/▼]. The following options will be enabled.</p> <p>MAGIC - Image Size</p> <p> To configure Customized Key, go to SETUP&RESET → Customized Key and select the mode you want.</p>
	<p>When the OSD guide is displayed, the [/☀] button changes the sound volume in HDMI mode or adjusts the brightness in Digital mode.</p> <p>When the menu screen is displayed, the button functions as the (+) key to move to an upper menu or adjust the setting of an option.</p>
	<p>Confirm a menu selection.</p> <p>When the OSD guide is displayed, the [/⊞] button changes the input source (HDMI/Digital). If you power on the product or change the input source by pressing the [/⊞] button, a message that shows the changed input source will appear at the top left corner of the screen.</p>





Icons	Description
	When the OSD guide is displayed, the [] button opens the 3D setting window.
	Turn the screen on or off. The power indicator will be lit when the product is operating normally.  <ul style="list-style-type: none">• Refer to "10.2 PowerSaver" for details about the power-saving function.• To reduce power consumption, it is best to remove the power cable when you will not be using the product for an extended period of time.

1.3.2 Reverse Side



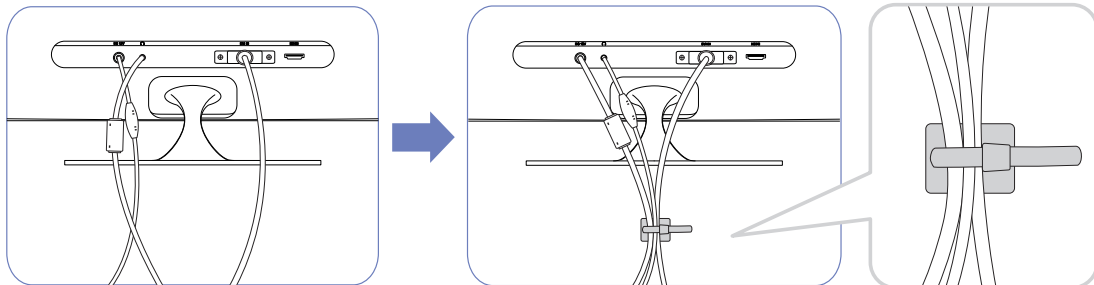
The color and shape of parts may differ from what is shown. Specifications are subject to change without notice to improve quality.



Port	Description
	Connects to the DC power adapter.
	Connects to an audio output device such as headphones.
	Connects to a source device via a DVI cable.
	Connects to a source device using an HDMI cable.

1.3.3 Tidying Up the Connected Cables

Tidy up the cables using the cable holder on the back of the stand.



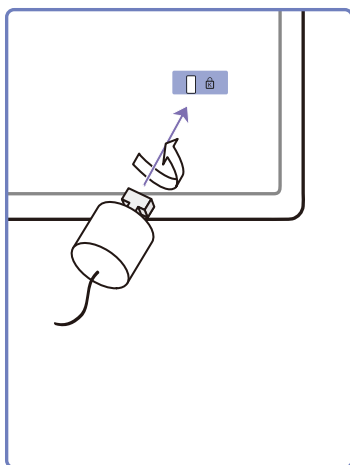
The color and shape of parts may differ from what is shown. Specifications are subject to change without notice to improve quality.

1.3.4 Anti-theft Lock

An anti-theft lock allows you to use the product securely even in public places.

The locking device shape and locking method depend on the manufacturer. Refer to the user guide provided with your anti-theft locking device for details.

To lock an anti-theft locking device



- 1 Fix the cable of your anti-theft locking device to a heavy object such as a desk.
- 2 Put one end of the cable through the loop on the other end.
- 3 Insert the locking device into the anti-theft lock slot at the back of the product.
- 4 Lock the locking device.

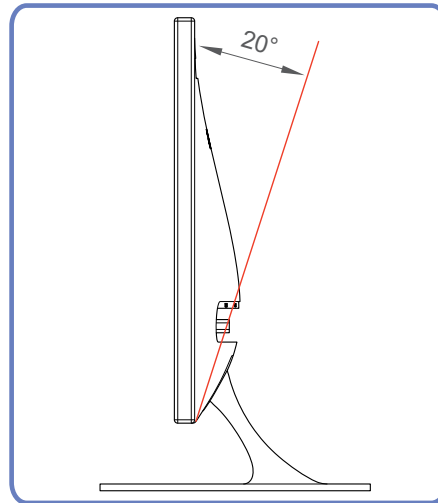


- An anti-theft locking device can be purchased separately.
- Refer to the user guide provided with your anti-theft locking device for details.
- Anti-theft locking devices can be purchased at electronics retailers or online.

1.3.5 Adjusting the Product Tilt



The color and shape of parts may differ from what is shown. Specifications are subject to change without notice to improve quality.



- You can adjust the tilt of your monitor.
- Hold the lower part of the product and adjust the tilt carefully.

3D

This feature allows you to view 3D content such as 3D movies. You can view 3D content using (SyncMaster-dedicated) Samsung 3D glasses.

2.1 3D



- You can purchase "SyncMaster-dedicated 3D glasses (model name: SSG-M3750CR)" separately. Contact the dealer you purchased the product from for details about purchasing the 3D glasses.
- The product may not be compatible with 3D glasses other than the model specified above.
- Power off the 3D glasses if you will not be using them. Otherwise, the battery life will decrease.
- When you configure the display settings initially, change the frequency to 120Hz using the display settings menu on the Windows desktop.
 - System requirements to play 3D PC games

Basic Video Signal	Recommended connection		Operating systems supported	
If an AMD HD5000 series graphics card or higher is used	DVI-D	Display images in FullHD Real 120Hz mode	Windows 7, Vista	Recommended
Other graphics cards, such as an nVIDIA graphics card or a graphics card lower than AMD HD5000 series	DVI-D	Display images in Side-by-side 60Hz mode	Windows 7, Vista, XP	

Important Health and Safety Information when Viewing 3D Video



Warning. Read the following safety information thoroughly before using the 3D video function.

- Some viewers may experience dizziness, nausea or headaches when viewing 3D video. If you experience these symptoms, stop viewing 3D TV, take off the 3D glasses, and rest.
- Viewing 3D video for an extended period of time may cause eye fatigue. If you experience eye fatigue, stop viewing 3D video, take off the 3D glasses, and rest.
- Children must be constantly monitored by adults when using the 3D function. If your child shows any symptom such as eye fatigue, headache, dizziness or nausea, stop the child from watching 3D video to rest.
- Do not use the 3D glasses for any other purpose (as general spectacle, sunglasses, protective goggles, etc.) than watching 3D pictures.
- Do not use the 3D function or 3D glasses while moving. You may trip or fall and become injured.

2.1.1 3D Mode

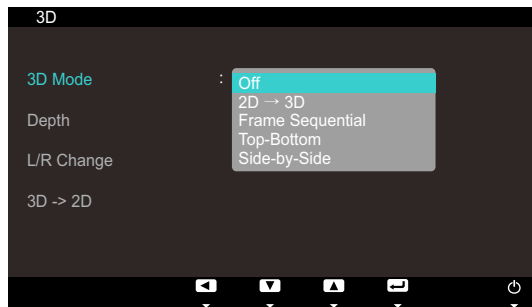
Select the appropriate mode for the video input, and view 3D video.



Put on the 3D glasses, and select whichever 3D mode that offers the best 3D effect from **2D** → **3D**.

Configuring the 3D

- 1 Press any button on the front of the product to display the OSD guide. Next, press [MENU] to display the corresponding menu screen.
- 2 Press [▲/▼] to move to **Picture** and press [□/⊕] on the product.
- 3 Press [▲/▼] to move to **3D** and press [□/⊕] on the product.
- 4 Press [▲/▼] to move to **3D Mode** and press [□/⊕] on the product. The following screen will appear.



- **Off**: Disable the **3D Mode** function.
 - **2D → 3D**: Convert 2D video to 3D video.
 - **Frame Sequential** : Display the left and right images alternately in each frame.
 - **Top Bottom** : Display the top and bottom images overlapping each other to allow you to experience the 3D effect.
 - **Side-By-Side** : Display the left and right images overlapping each other to allow you to experience the 3D effect.
- 5 Press [▲/▼] to move to the option you want and press the [□/⊕].
 - 6 The selected option will be applied.

2.1.2 Depth

Determines the three-dimensional effect of the 3D video.

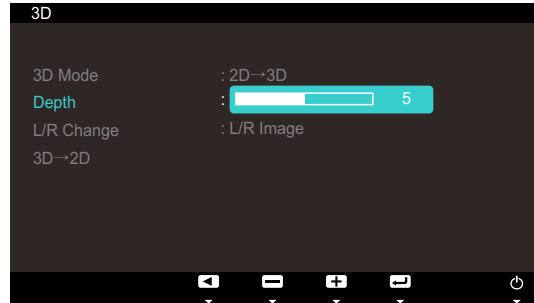


This option is available only when the 3D mode is set to **2D → 3D**.

Configuring Depth

- 1 Press any button on the front of the product to display the OSD guide. Next, press [MENU] to display the corresponding menu screen.
- 2 Press [▲/▼] to move to **Picture** and press [□/⊕] on the product.
- 3 Press [▲/▼] to move to **3D** and press [□/⊕] on the product.

- 4 Press [**▲/▼**] to move to **Depth** and press [**□/Ⓜ**] on the product. The following screen will appear.



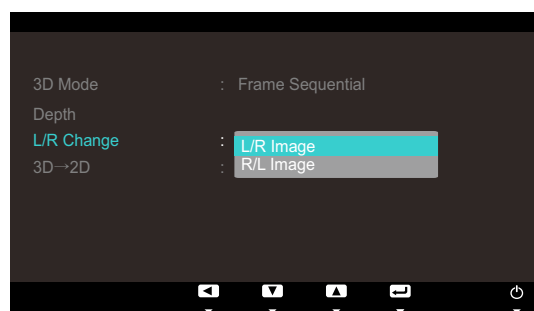
- 5 Adjust the **Depth** using the [**▲/▼**] button.
- 6 The selected option will be applied.

2.1.3 L/R Change

Switch the left image to the right image, and vice versa.

Configuring L/R Change

- 1 Press any button on the front of the product to display the OSD guide. Next, press [MENU] to display the corresponding menu screen.
- 2 Press [**▲/▼**] to move to **Picture** and press [**□/Ⓜ**] on the product.
- 3 Press [**▲/▼**] to move to **3D** and press [**□/Ⓜ**] on the product.
- 4 Press [**▲/▼**] to move to **L/R Change** and press [**□/Ⓜ**] on the product. The following screen will appear.



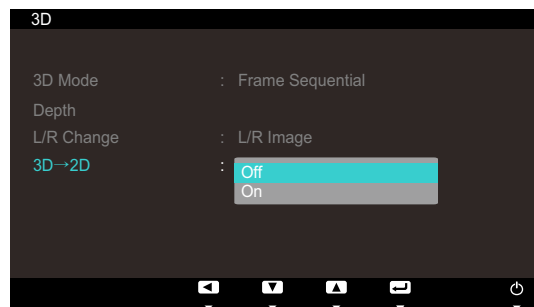
- **L/R Image**
 - **R/L Image**
- 5 Press [**▲/▼**] to move to the option you want and press the [**□/Ⓜ**].
 - 6 The selected option will be applied.

2.1.4 3D → 2D

Activates 2D screen mode.

Configuring 3D → 2D

- 1 Press any button on the front of the product to display the OSD guide. Next, press [MENU] to display the corresponding menu screen.
- 2 Press [▲/▼] to move to **Picture** and press [□/⊞] on the product.
- 3 Press [▲/▼] to move to **3D** and press [□/⊞] on the product.
- 4 Press [▲/▼] to move to **3D → 2D** and press [□/⊞] on the product. The following screen will appear.



- **Off**
 - **On**
- 5 Press [▲/▼] to move to the option you want and press the [□/⊞].
 - 6 The selected option will be applied.

2.2 Standard HDMI-Compatible Formats



The 3D formats indicated below are recommended by the HDMI association and must be supported.

Basic Video Signal	Standard HDMI 3D
1920x1080p @24Hz	1920x2205p @24Hz
1280x720p @60Hz	1280x1470p @60Hz

2.3 Resolution Supported for PC Input (via the HDMI Port)



PC input is optimized for video in 1920x1080 resolution. Videos with a resolution other than 1920x1080 will not be displayed in 3D properly and will not be viewable in full screen mode.

2.4 Playing 3D Games on a PC

First, install the SyncMaster 3D GAME Launcher (TriDef 3D) software.



SyncMaster 3D Game Launcher (TriDef 3D) is a game driver that allows you to play games in 3D on a PC.

- 1 Set your monitor as the default monitor for the PC.
- 2 Install the "SyncMaster 3D Game Launcher (TriDef 3D)" software provided on a CD.
 - Install the software following the instructions displayed.
 - Alternatively, download and install the software from www.tridef.com/syncmaster.
- 3 Go to **Start** → **All Programs** → "TriDef 3D" → , and select and run "SyncMaster 3D Game Launcher (TriDef 3D)".
- 4 To add compatible games, click **Search**. Alternatively, add games to "SyncMaster 3D Game Launcher (TriDef 3D)" using the following methods.
 - Drag the icon or execution file of a game on the desktop into the "SyncMaster 3D Game Launcher (TriDef 3D)" window.
 - Go to "File" and select "Add Games...".
- 5 To play a game in 3D mode, double-click the game icon. Alternatively, select the game and click "Start".
- 6 Activate the 3D function on the product, and play the game wearing the 3D glasses.
 - 
 - Refer to the user guide for the 3D glasses for details about how to use the 3D glasses.
 - If the 3D glasses do not turn **On** even though 3D screen displays when playing a 3D game, press the 3D button to check that **Frame Sequential** is selected for **3D Mode**. Depending on the graphics card, **Frame Sequential** might not be selected automatically when playing a 3D game.
 - 
 - Refer to "Online Help" for PC system requirements and details about how to use "SyncMaster 3D Game Launcher (TriDef 3D)".
 - If you start a game from the desktop and not from "SyncMaster 3D Game Launcher (TriDef 3D)", the game will not be displayed in 3D.
 - The minimum PC system requirements may vary depending on the 3D game. For details, refer to the home page or user guide for the 3D game you want to play.
 - "SyncMaster 3D Game Launcher (TriDef 3D)" does not support PCs that are based on Macintosh or Linux operating systems.
 - For Information
 - For further details about "SyncMaster 3D Game Launcher (TriDef 3D)", please contact DDD Co., Ltd. (www.tridef.com).
 - For further details about the product : please contact Samsung Electronics.

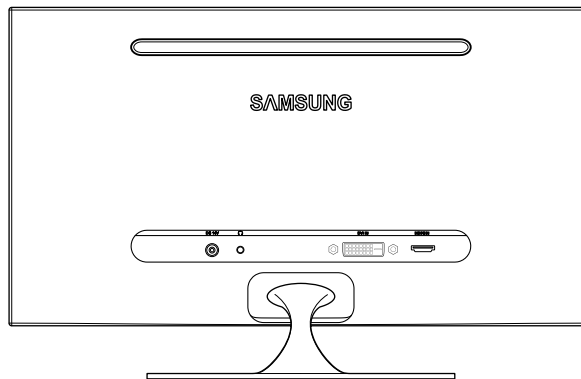
- To find 3D-compatible games, visit www.tridef.com/syncmaster. "SyncMaster 3D Game Launcher(TriDef 3D)" is updated each time new games are added to the list of compatible games. Update the software periodically at www.tridef.com/syncmaster.

2.5 Precautions when Viewing 3D Video

- The 3D effect may be experienced differently depending on the viewer. You may not notice the 3D effect at all if you have a prescription for one eye that is very different from the other eye.
- When viewing a 3D video under a fluorescent lamp or 3-wavelength lamp, you may notice a small amount of screen flickering.
- Interference may cause the 3D glasses to malfunction if there is any other 3D product or electromagnetic device (a microwave or a device that uses 2.4 Ghz-bandwidth frequency such as an Internet router) turned on nearby. If an unintended operation of the 3D glasses occurs, it is best to remove other electromagnetic devices or wireless communication devices nearby.
- Visually-sensitive viewers may notice a slight screen flickering when viewing bright images in 50Hz, 3D video.
- Right after the monitor powers on, the left and right sides of 3D pictures may overlap more than usual. It may take a little time until the picture quality is optimized.
- In some countries, strong flickering may be experienced from the 3D glasses depending on the ambient light intensity. To minimize flicker when viewing a 3D picture, dim the light or change the frequency on the PC to 50Hz or 100Hz.

3.1 Before Connecting

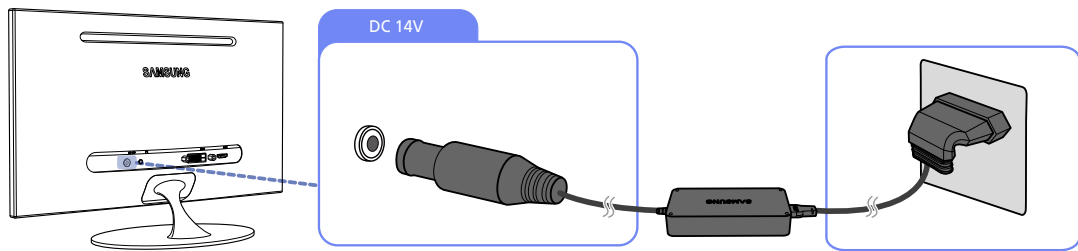
3.1.1 Pre-connection Checkpoints



- Before connecting a source device, read the user manual provided with it. The number and locations of ports on source devices may differ from device to device.
- Do not connect the power cable until all connections are completed. Connecting the power cable during connection may damage the product.
- Check the types of ports at the back of the product you want to connect.

3.2 Connecting the Power

- Connect the power adapter to [DC 14V] on the rear of the product. Connect the power cord to the adapter and wall socket. (The input voltage is switched automatically.)



3.3 Connecting and Using a PC

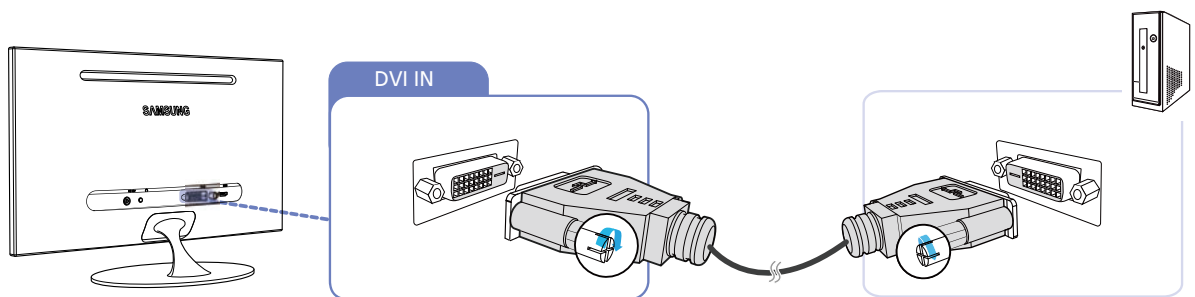
3.3.1 Connecting to a PC

- Select a connection method suitable for your PC.



Connecting parts may differ in different products.

Connection Using the DVI Cable

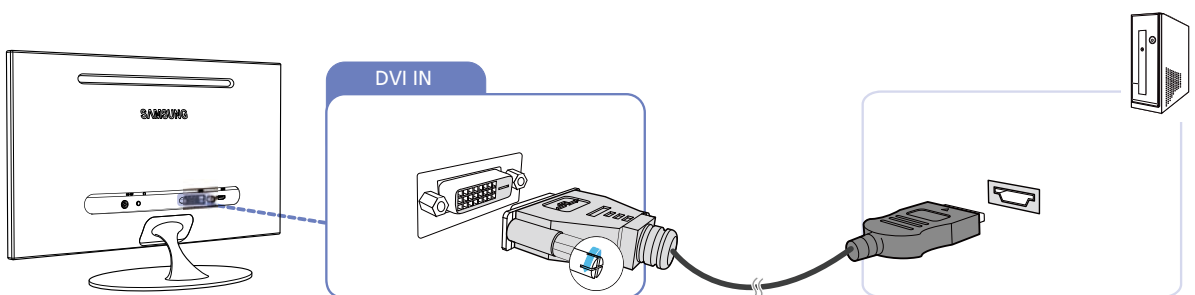


- 1 Connect the DVI cable to the DVI port on the back of the product and the DVI port on the PC.
- 2 Connect the DC power adapter to the product and a power socket, and turn on the power switch on the PC.



Audio is not available if the PC and product are connected via the DVI port.

Connection Using an DVI-HDMI Cable

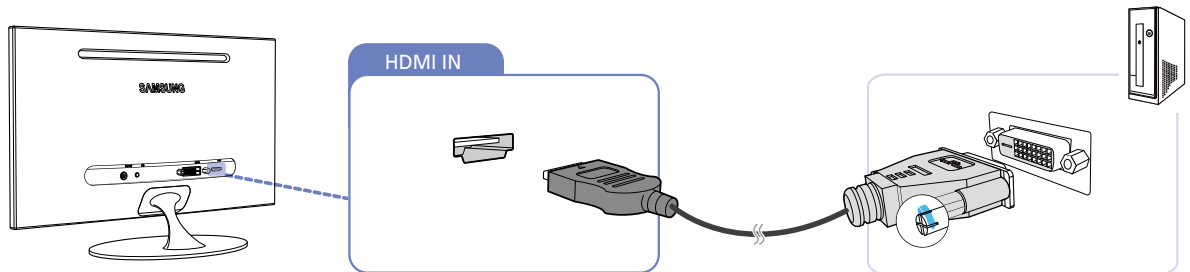


- 1 Connect the DVI-HDMI cable to the DVI port on the back of the product and the DVI port on the PC.
- 2 Connect the DC power adapter to the product and a power socket, and turn on the power switch on the PC.



Audio is not available if the PC and product are connected via the DVI port.

Connection Using an HDMI-DVI Cable

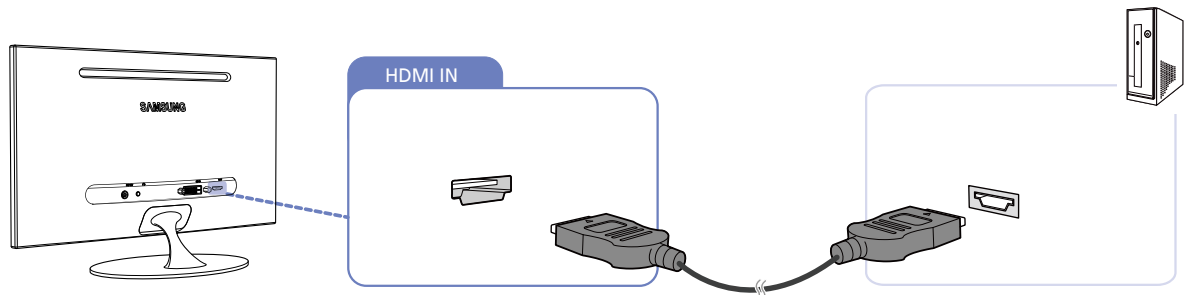


- 1 Connect the HDMI-DVI cable to the HDMI port on the back of the product and the DVI port on the PC.
- 2 Connect the DC power adapter to the product and a power socket, and turn on the power switch on the PC.



Audio is not available if the PC and product are connected via the DVI-HDMI port.

Connection Using an HDMI Cable (Digital Type)



- 1 Connect the HDMI cable to the HDMI port on the back of the product and the HDMI port on the PC.
- 2 Connect the DC power adapter to the product and a power socket, and turn on the power switch on the PC.



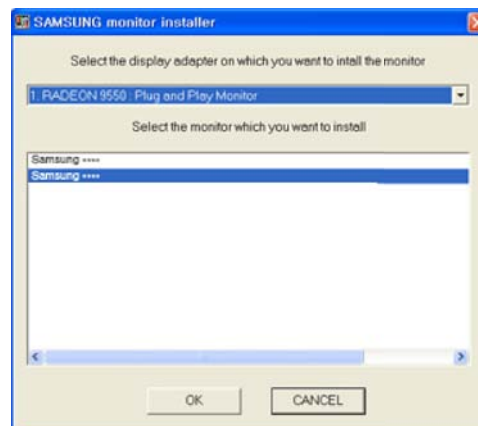
Be sure to connect an audio output device such as headphones or speakers to [🔊] on the product to hear audio.

3.3.2 Driver Installation



- You can set the optimum resolution and frequency for this product by installing the corresponding drivers for this product.
- An installation driver is contained on the CD supplied with the product.
- If the file provided is faulty, visit the Samsung homepage (<http://www.samsung.com>) and download the file.

- 1 Insert the user manual CD provided with the product into the CD-ROM drive.
- 2 Click "Windows Driver".
- 3 Follow the instructions given on the screen to proceed with installation.
- 4 Select your product model from the list of models.



- 5 Go to Display Properties and check that the resolution and refresh rate are appropriate. Refer to your Windows OS manual for further details.

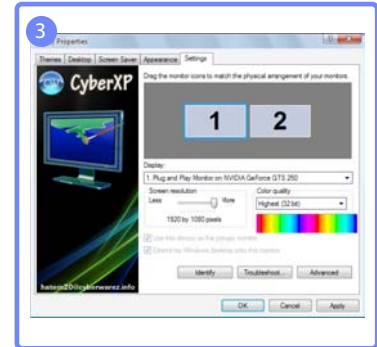
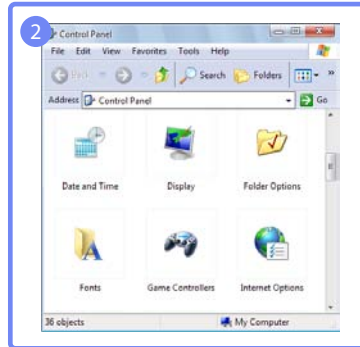
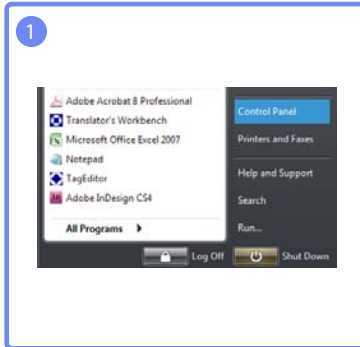
3.3.3 Changing the Resolution Using a PC



- Adjust the resolution and refresh rate in Control Panel on your PC to obtain optimum picture quality.
- The picture quality of TFT-LCDs may degrade if the optimum resolution is not selected.

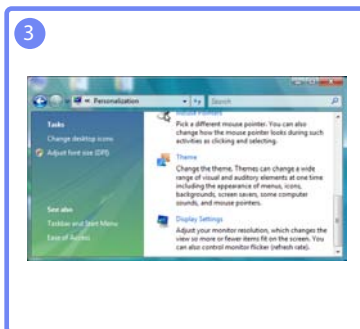
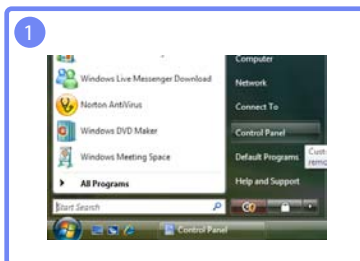
Changing the Resolution on Windows XP

Go to **Control Panel** → **Display** → **Settings** and change the resolution.



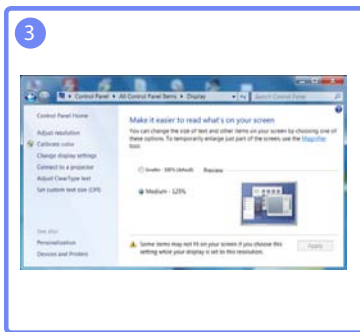
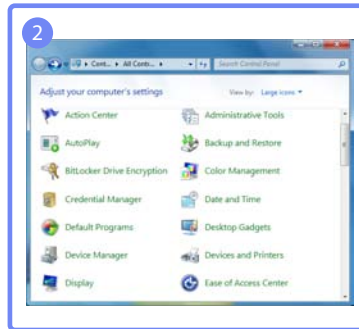
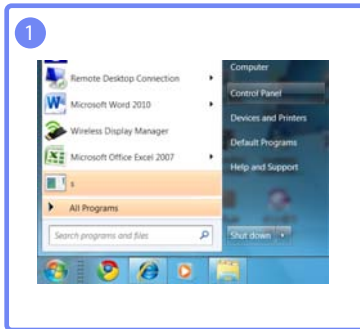
Changing the Resolution on Windows Vista

Go to **Control Panel** → **Personalization** → **Display Settings** and change the resolution.



Changing the Resolution on Windows 7

Go to **Control Panel** → **Display** → **Screen Resolution** and change the resolution.



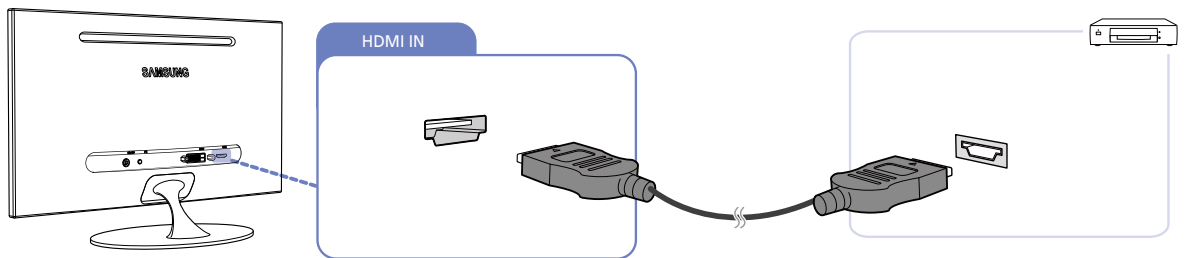
3.4 Connecting to a Video Device

- The product can be connected to a video device.



Connecting parts may differ in different products.

3.4.1 Connection Using an HDMI Cable



- 1 Connect an HDMI cable to the HDMI ports on the product and video device.
- 2 Press [\square]/[Ⓜ] to change the input source to **HDMI**.

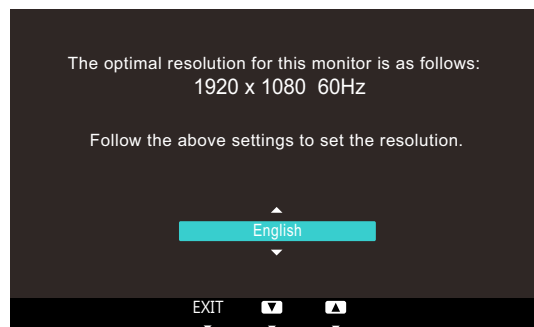


Be sure to connect an audio output device such as headphones or speakers to [🎧] on the product to hear audio.

3.5 Setting Optimum Resolution

An information message about setting optimum resolution will appear if you power on the product for the first time after purchase.

Select a language and change the resolution to the optimum value.

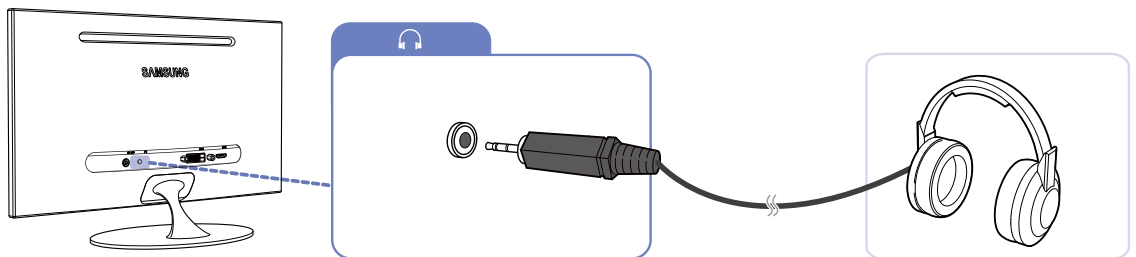


- 1 Press [▲/▼] to move to the language you want and press the [□/Ⓜ].
- 2 To hide the information message, press [MENU].



- If the optimum resolution is not selected, the message will appear up to three times for a specified time even when the product is turned off and on again.
- The optimum resolution (1920 x 1080) can also be selected in **Control Panel** on your PC.

3.6 Connecting Headphones



- Connect an audio output device such as headphones or speakers to [🎧] on the product.

Configure the screen settings such as brightness and color tone.

4.1 MAGIC

This feature provides the viewing angle, brightness, and tint to suit your preferences.

4.1.1 SAMSUNG MAGIC Angle

SAMSUNG MAGIC Angle allows you to configure the settings to obtain the optimum picture quality according to your viewing angle.

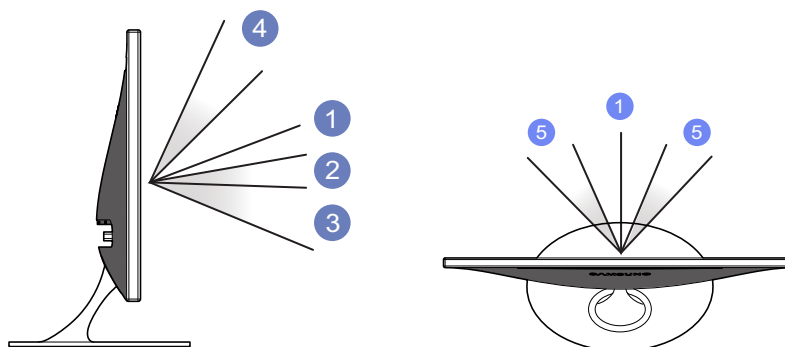
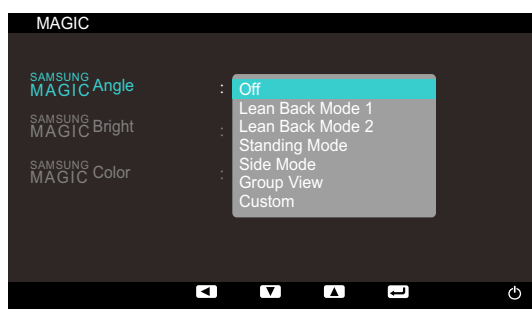
You can enjoy similar picture quality to when you view directly in front of the product by selecting a viewing mode appropriate for each viewing angle.



- This menu is not available when **SAMSUNG MAGIC Bright** is in **Cinema** or **Dynamic Contrast** mode.
- This option is not available when **SAMSUNG MAGIC Color** is enabled.

Configuring **SAMSUNG MAGIC Angle**

- 1 Press any button on the front of the product to display the OSD guide. Next, press [MENU] to display the corresponding menu screen.
- 2 Press [▲/▼] to move to **Picture** and press [□/⊞] on the product.
- 3 Press [▲/▼] to move to **MAGIC** and press [□/⊞] on the product.
- 4 Press [▲/▼] to move to **SAMSUNG MAGIC Angle** and press [□/⊞] on the product. The following screen will appear.



- **Off** ①: Select this option to view directly in front of the product.

- **Lean Back Mode 1** ②: Select this option to view from a place slightly lower than the product.
- **Lean Back Mode 2** ③: Select this option to view from a place lower than Lean Back Mode 1 ② mode.
- **Standing Mode** ④: Select this option to view from a place higher than the product.
- **Side Mode** ⑤: Select this option to view from either side of the product.
- **Group View**: Select this option for more than one viewer to view from places ①, ④, and ⑤.
- **Custom**: **Lean Back Mode 1** will be applied by default if **Custom** is selected.

5 Press [▲/▼] to move to the option you want and press the [□/⊞].

6 The selected option will be applied.

4.1.2 SAMSUNG MAGIC Bright

This menu provides an optimum picture quality suitable for the environment where the product will be used.

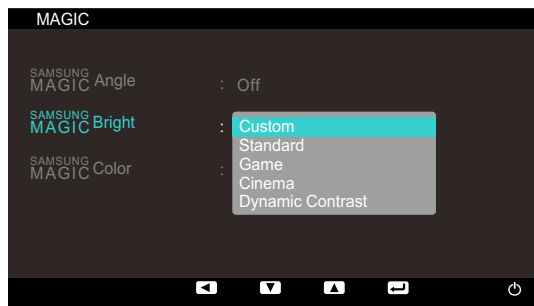


- This menu is not available when **SAMSUNG MAGIC Angle** is enabled.
- Not available if **Eco Saving** is set to **On**.
- Sub-options under **SAMSUNG MAGIC Bright** may vary depending on the settings of "**PC/AV Mode**." ("7.4 **PC/AV Mode**")
- This menu is not available when **SAMSUNG MAGIC Color** is in **Full** or **Intelligent** mode.

Configuring SAMSUNG MAGIC Bright

- 1 Press any button on the front of the product to display the OSD guide. Next, press [MENU] to display the corresponding menu screen.
- 2 Press [▲/▼] to move to **Picture** and press [□/⊞] on the product.
- 3 Press [▲/▼] to move to **MAGIC** and press [□/⊞] on the product.
- 4 Press [▲/▼] to move to **SAMSUNG MAGIC Bright** and press [□/⊞] on the product. The following screen will appear.

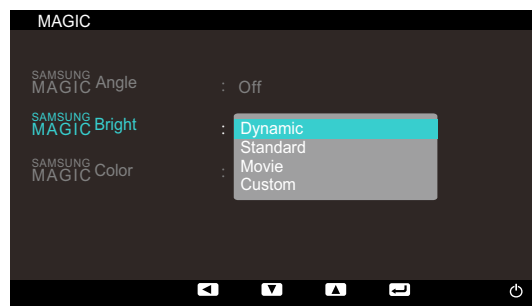
In **PC** mode



- **Custom**: Customize the contrast and brightness as required.
- **Standard**: Obtain a picture quality suitable for editing documents or using Internet.

- **Game:** Obtain a picture quality suitable for playing games that involve many graphic effects and dynamic movements.
- **Cinema:** Obtain the brightness and sharpness of TVs suitable for enjoying video and DVD content.
- **Dynamic Contrast:** Obtain balanced brightness through automatic contrast adjustment.

In **AV** mode



- **Dynamic:** This mode is suitable when the ambient light is bright.
- **Standard:** This mode is generally suitable for any environment.
- **Movie:** This mode reduces eye fatigue.
- **Custom:** Customize the contrast and brightness as required.

5 Press [**▲/▼**] to move to the option you want and press the [**□/⊞**].

6 The selected option will be applied.

4.1.3 SAMSUNG MAGIC Color

SAMSUNG MAGIC Color is a new picture-quality improvement technology developed independently by Samsung, which delivers vivid natural colors without picture quality degradation.

- This menu is not available when **SAMSUNG MAGIC Angle** is enabled.
- Not available when **SAMSUNG MAGIC Bright** is in **Cinema** or **Dynamic Contrast** mode.

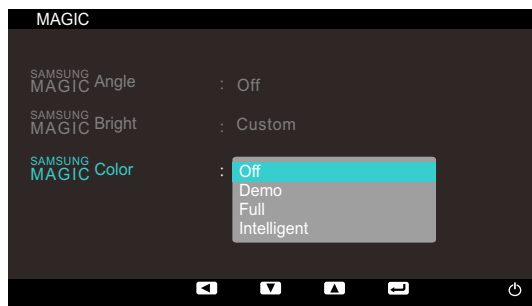
Configuring **SAMSUNG MAGIC Color**

- 1 Press any button on the front of the product to display the OSD guide. Next, press [**MENU**] to display the corresponding menu screen.
- 2 Press [**▲/▼**] to move to **Picture** and press [**□/⊞**] on the product.
- 3 Press [**▲/▼**] to move to **MAGIC** and press [**□/⊞**] on the product.

4

Screen Setup

- 4 Press [**▲/▼**] to move to **SAMSUNG MAGIC Color** and press [**□/⊗**] on the product. The following screen will appear.



- **Off:** Disable **SAMSUNG MAGIC Color**.
 - **Demo:** Compare normal screen mode with **SAMSUNG MAGIC Color** mode.
 - **Full:** Obtain a vivid picture quality for all areas including the flesh colors in the picture.
 - **Intelligent:** Improve the chroma for all areas except the flesh colors in the picture.
- 5 Press [**▲/▼**] to move to the option you want and press the [**□/⊗**].
 - 6 The selected option will be applied.

4.2 Brightness

Adjust the general brightness of the picture. (Range: 0~100)

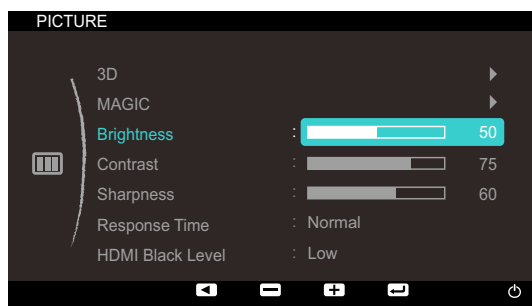
A higher value will make the picture appear brighter.

 This menu is not available when **SAMSUNG MAGIC Bright** is in **Dynamic Contrast** mode.

4.2.1 Configuring Brightness

- 1 Press any button on the front of the product to display the OSD guide. Next, press [**MENU**] to display the corresponding menu screen.
- 2 Press [**▲/▼**] to move to **Picture** and press [**□/⊗**] on the product.

- 3 Press [**▲/▼**] to move to **Brightness** and press [**□/⊗**] on the product. The following screen will appear.



- 4 Adjust the **Brightness** using the [**▲/▼**] button.

4.3 Contrast

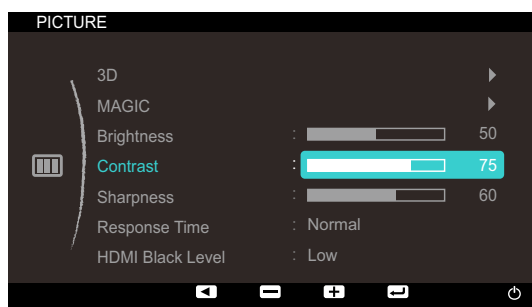
Adjust the contrast between the objects and background. (Range: 0~100)

A higher value will increase the contrast to make the object appear clearer.

- This menu is not available when **SAMSUNG MAGIC Color** is in **Full** or **Intelligent** mode.
- Not available when **SAMSUNG MAGIC Bright** is in **Cinema** or **Dynamic Contrast** mode.

4.3.1 Configuring Contrast

- 1 Press any button on the front of the product to display the OSD guide. Next, press [**MENU**] to display the corresponding menu screen.
- 2 Press [**▲/▼**] to move to **Picture** and press [**□/⊗**] on the product.
- 3 Press [**▲/▼**] to move to **Contrast** and press [**□/⊗**] on the product. The following screen will appear.



- 4 Adjust the **Contrast** using the [**▲/▼**] button.

4.4 Sharpness

Make the outline of objects more clear or blurry. (Range: 0~100)

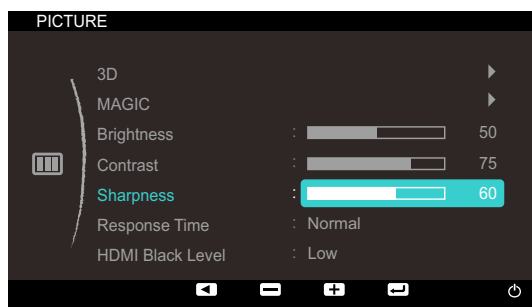
A higher value will make the outline of objects clearer.



- This menu is not available when **SAMSUNG MAGIC Bright** is in **Cinema** or **Dynamic Contrast** mode.
- This menu is not available when **SAMSUNG MAGIC Color** is in **Full** or **Intelligent** mode.

4.4.1 Configuring Sharpness

- 1 Press any button on the front of the product to display the OSD guide. Next, press [MENU] to display the corresponding menu screen.
- 2 Press [▲/▼] to move to **Picture** and press [□/⊗] on the product.
- 3 Press [▲/▼] to move to **Sharpness** and press [□/⊗] on the product. The following screen will appear.



- 4 Adjust the **Sharpness** using the [▲/▼] button.

4.5 Response Time

Accelerate the panel response rate to make video appear more vivid and natural.

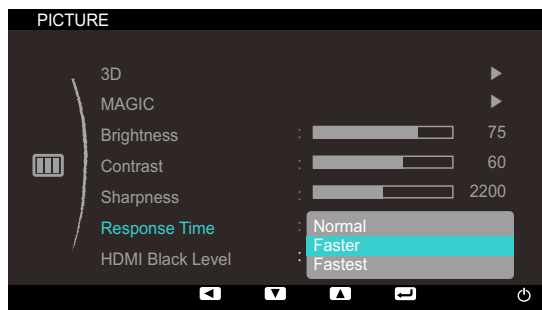


- It is best to set **Response Time** to **Normal** or **Faster** when you are not viewing a movie.
- The functions available on the monitor may vary depending on the model. Refer to the actual product.

4.5.1 Configuring Response Time

- 1 Press any button on the front of the product to display the OSD guide. Next, press [MENU] to display the corresponding menu screen.
- 2 Press [▲/▼] to move to **Picture** and press [□/⊗] on the product.

- 3 Press [▲/▼] to move to **Response Time** and press [□/⊞] on the product. The following screen will appear.

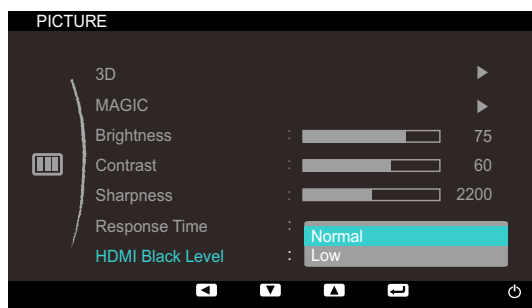


- 4 Press [▲/▼] to move to the option you want and press the [□/⊞].
- 5 The selected option will be applied.

4.6 HDMI Black Level

If a DVD player or set-top box is connected to the product via **HDMI**, image quality degradation (contrast/color degradation, black level, etc.) may occur, depending on the connected source device. In such case, **HDMI Black Level** HDMI Black Level can be used to adjust the image quality.

- 1 Press any button on the front of the product to display the OSD guide. Next, press [MENU] to display the corresponding menu screen.
- 2 Press [▲/▼] to move to **Picture** and press [□/⊞] on the product.
- 3 Press [▲/▼] to move to **HDMI Black Level** and press [□/⊞] on the product. The following screen will appear.



- **Normal**: Select this mode when there is no contrast ratio degradation.
 - **Low**: Select this mode to reduce the black level and increase the white level when there is a contrast ratio degradation.
- 4 Press [▲/▼] to move to the option you want and press the [□/⊞].
 - 5 The selected option will be applied.

 **HDMI Black Level** may not be compatible with some source devices.

Configuring Tint

Adjust the tint of the screen. This option is not available when **SAMSUNG MAGIC Bright** is set to **Cinema** or **Dynamic Contrast** mode.

5.1 Red

Adjust the value of the color red in the picture. (Range: 0~100)

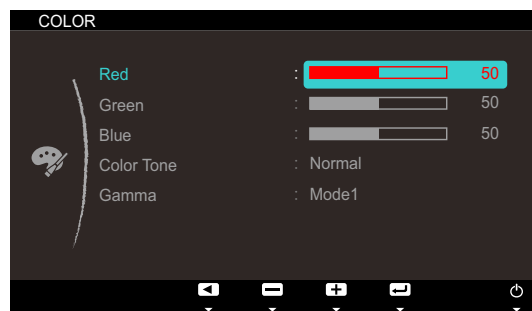
A higher value will increase the intensity of the color.



This option is not available when **SAMSUNG MAGIC Color** is in **Full** or **Intelligent** mode.

5.1.1 Configuring Red

- 1 Press any button on the front of the product to display the OSD guide. Next, press [MENU] to display the corresponding menu screen.
- 2 Press [▲/▼] to move to **COLOR** and press [□/⊕] on the product.
- 3 Press [▲/▼] to move to **Red** and press [□/⊕] on the product. The following screen will appear.



- 4 Adjust the **Red** using the [▲/▼] button.

5.2 Green

Adjust the value of the color green in the picture. (Range: 0~100)

A higher value will increase the intensity of the color.

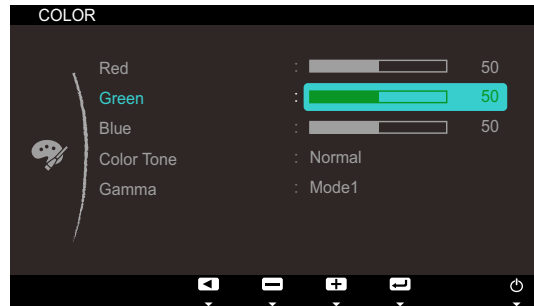


This option is not available when **SAMSUNG MAGIC Color** is in **Full** or **Intelligent** mode.

5.2.1 Configuring Green

- 1 Press any button on the front of the product to display the OSD guide. Next, press [MENU] to display the corresponding menu screen.
- 2 Press [▲/▼] to move to **COLOR** and press [□/⊕] on the product.

- Press [▲/▼] to move to **Green** and press [□/⊞] on the product. The following screen will appear.



- Adjust the **Green** using the [▲/▼] button.

5.3 Blue

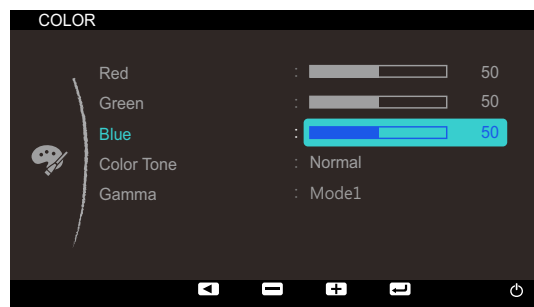
Adjust the value of the color blue in the picture. (Range: 0~100)

A higher value will increase the intensity of the color.

 This option is not available when **SAMSUNG MAGIC Color** is in **Full** or **Intelligent** mode.

5.3.1 Configuring Blue

- Press any button on the front of the product to display the OSD guide. Next, press [MENU] to display the corresponding menu screen.
- Press [▲/▼] to move to **COLOR** and press [□/⊞] on the product.
- Press [▲/▼] to move to **Blue** and press [□/⊞] on the product. The following screen will appear.



- Adjust the **Blue** using the [▲/▼] button.

5.4 Color Tone

Adjust the general color tone of the picture.

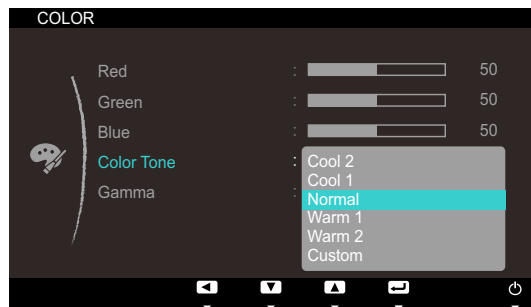


- This option is not available when **SAMSUNG MAGIC Angle** is enabled.
- This menu is not available when **SAMSUNG MAGIC Color** is in **Full** or **Intelligent** mode.

5.4.1 Configuring the Color Tone Settings

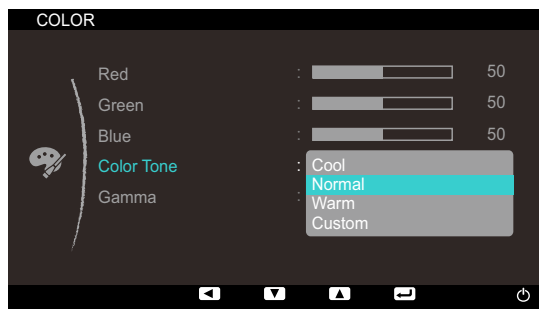
- 1 Press any button on the front of the product to display the OSD guide. Next, press [MENU] to display the corresponding menu screen.
- 2 Press [▲/▼] to move to **COLOR** and press [□/⊞] on the product.
- 3 Press [▲/▼] to move to **Color Tone** and press [□/⊞] on the product. The following screen will appear.

In **PC** mode



- **Cool2**: Set the color temperature to be cooler than **Cool1**.
- **Cool1**: Set the color temperature to be cooler than Normal mode.
- **Normal**: Display the standard color tone.
- **Warm1**: Set the color temperature to be warmer than Normal mode.
- **Warm2**: Set the color temperature to be warmer than **Warm1**.
- **Custom**: Customize the color tone.

In **AV** mode



- **Cool**: Set the color temperature to be cooler than Normal mode.
- **Normal**: Display the standard color tone.

- **Warm:** Set the color temperature to be warmer than Normal mode.
 - **Custom:** Customize the color tone.
- 4 Press [▲/▼] to move to the option you want and press the [□/⊞].
 - 5 The selected option will be applied.

5.5 Gamma

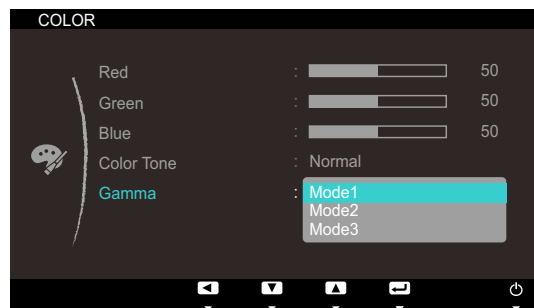
Adjust the mid-range brightness (Gamma) of the picture.



This option is not available when **SAMSUNG MAGIC Angle** is enabled.

5.5.1 Configuring Gamma

- 1 Press any button on the front of the product to display the OSD guide. Next, press [MENU] to display the corresponding menu screen.
- 2 Press [▲/▼] to move to **COLOR** and press [□/⊞] on the product.
- 3 Press [▲/▼] to move to **Gamma** and press [□/⊞] on the product. The following screen will appear.



- 4 Press [▲/▼] to move to the option you want and press the [□/⊞].
- 5 The selected option will be applied.

6.1 Size

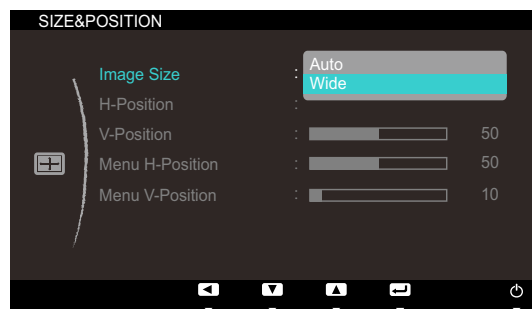
Change the picture size.

 This option is not available when **3D Mode** is enabled.

6.1.1 Changing the Picture Size

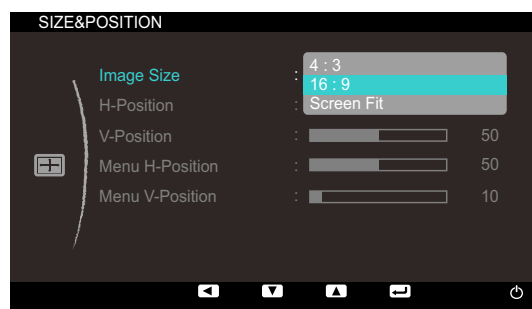
- 1 Press any button on the front of the product to display the OSD guide. Next, press [MENU] to display the corresponding menu screen.
- 2 Press [▲/▼] to move to **SIZE&POSITION** and press [□/⊞] on the product.
- 3 Press [▲/▼] to move to **Image Size** and press [□/⊞] on the product. The following screen will appear.

In **PC** mode



- **Auto**: Display the picture according to the aspect ratio of the input source.
- **Wide** : Display the picture in full screen regardless of the aspect ratio of the input source.

In **AV** mode



- **4:3**: Display the picture with an aspect ratio of 4:3. Suitable for videos and standard broadcasts.
- **16:9**: Display the picture with an aspect ratio of 16.9. Suitable for DVD content or widescreen broadcasts.
- **Screen Fit** Display the picture with the original aspect ratio without cutting off.


 Refer to "7.4 **PC/AV Mode**" for details about **PC/AV Mode**.

- 4 Press [▲/▼] to move to the option you want and press the [□/⊞].

- 5 The selected option will be applied.

6.2 Horizontal Position

Move the screen to the left or right.

-  Available only when **Size** is set to **Screen Fit**.
- This option is not available when **3D Mode** is enabled.

6.2.1 Configuring H-Position


- 1 Press any button on the front of the product to display the OSD guide. Next, press [MENU] to display the corresponding menu screen.
- 2 Press [▲/▼] to move to **SIZE&POSITION** and press [□/⊕] on the product.
- 3 Press [▲/▼] to move to **H-Position** and press [□/⊕] on the product. The following screen will appear.



- 4 Adjust the **H-Position** using the [▲/▼] button.

6.3 Vertical Position

Move the screen up or down.

-  Available only when **Size** is set to **Screen Fit**.
- This option is not available when **3D Mode** is enabled.

6.3.1 Configuring V-Position

- 1 Press any button on the front of the product to display the OSD guide. Next, press [MENU] to display the corresponding menu screen.
- 2 Press [▲/▼] to move to **SIZE&POSITION** and press [□/⊕] on the product.

- 3 Press [$\blacktriangle/\blacktriangledown$] to move to **V-Position** and press [\square/Enter] on the product. The following screen will appear.



- 4 Adjust the **V-Position** using the [$\blacktriangle/\blacktriangledown$] button.

6.4 Menu H-Position

Move the menu position to the left or right.

6.4.1 Configuring Menu H-Position

- 1 Press any button on the front of the product to display the OSD guide. Next, press [MENU] to display the corresponding menu screen.
- 2 Press [$\blacktriangle/\blacktriangledown$] to move to **SIZE&POSITION** and press [\square/Enter] on the product.
- 3 Press [$\blacktriangle/\blacktriangledown$] to move to **Menu H-Position** and press [\square/Enter] on the product. The following screen will appear.



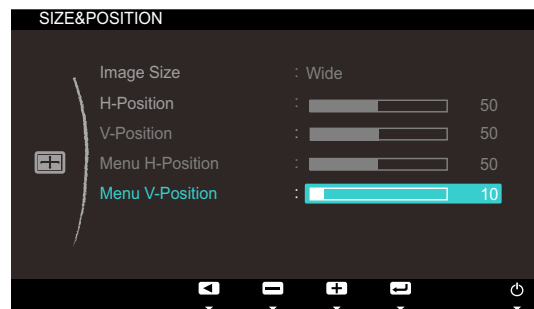
- 4 Adjust the **Menu H-Position** using the [$\blacktriangle/\blacktriangledown$] button.

6.5 Menu V-Position

Move the menu position up or down.

6.5.1 Configuring Menu V-Position

- 1 Press any button on the front of the product to display the OSD guide. Next, press [MENU] to display the corresponding menu screen.
- 2 Press [▲/▼] to move to **SIZE&POSITION** and press [□/⊞] on the product.
- 3 Press [▲/▼] to move to **Menu V-Position** and press [□/⊞] on the product. The following screen will appear.



- 4 Adjust the **Menu V-Position** using the [▲/▼] button.

7.1 Eco Saving

Adjust the power consumption of the product to save energy.

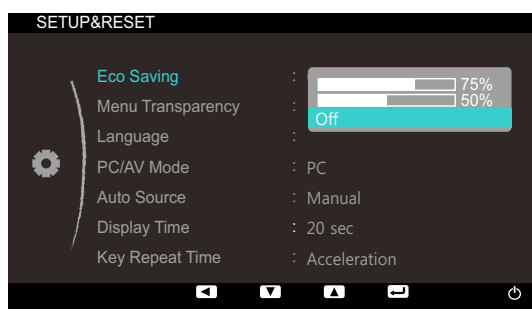
The **Eco Saving** function reduces power consumption by controlling the electric current used by the monitor panel.



This option is not available if **3D Mode** is enabled.

Configuring Eco Saving Settings

- 1 Press any button on the front of the product to display the OSD guide. Next, press [MENU] to display the corresponding menu screen.
- 2 Press [▲/▼] to move to **SETUP&RESET** and press [□/Ⓜ] on the product.
- 3 Move to ECO using the [▲/▼] buttons, and press [□/Ⓜ]. The following screen will appear.



- **75%** : Change the monitor power consumption to 75% of the default level.
 - **50%** : Change the monitor power consumption to 50% of the default level.
 - **Off**: Deactivate the **Eco Saving** function.
- 4 Press [▲/▼] to move to the option you want and press the [□/Ⓜ].
 - 5 The selected option will be applied.

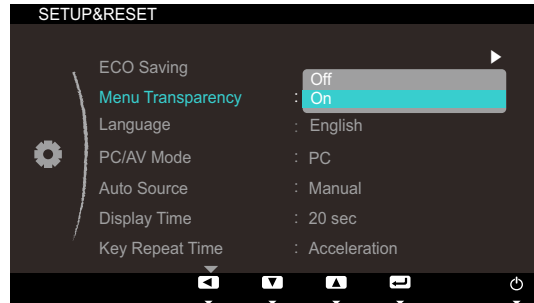
7.2 Menu Transparency

Set the transparency for the menu windows.

7.2.1 Changing Menu Transparency

- 1 Press any button on the front of the product to display the OSD guide. Next, press [MENU] to display the corresponding menu screen.
- 2 Press [▲/▼] to move to **SETUP&RESET** and press [□/Ⓜ] on the product.

- 3 Press [▲/▼] to move to **Menu Transparency** and press [□/⊞] on the product. The following screen will appear.



- 4 Press [▲/▼] to move to the option you want and press the [□/⊞].
- 5 The selected option will be applied.

7.3 Language

Set the menu language.

- A change to the language setting will only be applied to the onscreen menu display.
- It will not be applied to other functions on your PC.

7.3.1 Changing the Language

- 1 Press any button on the front of the product to display the OSD guide. Next, press [MENU] to display the corresponding menu screen.
- 2 Press [▲/▼] to move to **SETUP&RESET** and press [□/⊞] on the product.
- 3 Press [▲/▼] to move to **Language** and press [□/⊞] on the product. The following screen will appear.



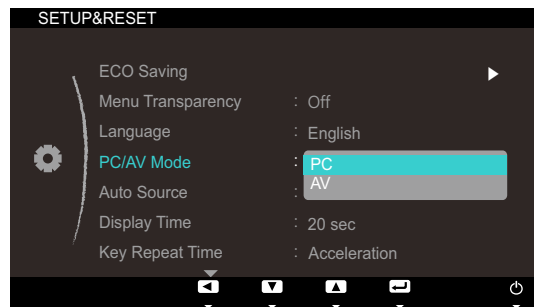
- 4 Press [▲/▼] to move to the option you want and press the [□/⊞].
- 5 The selected option will be applied.

7.4 PC/AV Mode

Set **PC/AV Mode** to **AV**. The picture size will be enlarged. This option is useful when you view a movie.

7.4.1 Configuring PC/AV Mode

- 1 Press any button on the front of the product to display the OSD guide. Next, press [MENU] to display the corresponding menu screen.
- 2 Press [▲/▼] to move to **SETUP&RESET** and press [□/⊞] on the product.
- 3 Press [▲/▼] to move to **PC/AV Mode** and press [□/⊞] on the product. The following screen will appear.



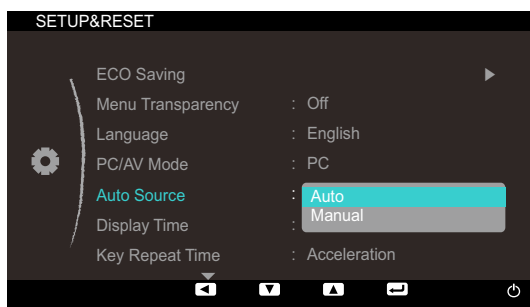
- 4 Press [▲/▼] to move to the option you want and press the [□/⊞].
- 5 The selected option will be applied.

7.5 Auto Source

Activate **Auto Source**.

7.5.1 Configuring Auto Source

- 1 Press any button on the front of the product to display the OSD guide. Next, press [MENU] to display the corresponding menu screen.
- 2 Press [▲/▼] to move to **SETUP&RESET** and press [□/Ⓜ] on the product.
- 3 Press [▲/▼] to move to **Auto Source** and press [□/Ⓜ] on the product. The following screen will appear.



- **Auto**: The input source is automatically recognized.
 - **Manual**: Manually select an input source.
- 4 Press [▲/▼] to move to the option you want and press the [□/Ⓜ].
 - 5 The selected option will be applied.

7.6 Display Time

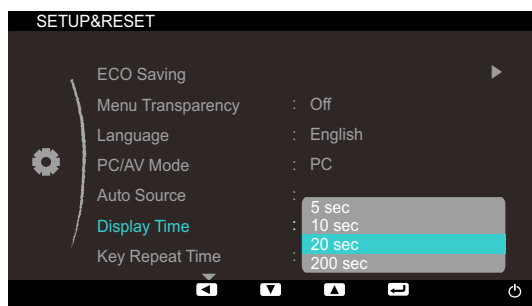
Set the on-screen display (OSD) menu to automatically disappear if the menu is not used for a specified period of time.

Display Time can be used to specify the time after which you want the OSD menu to disappear.

7.6.1 Configuring Display Time

- 1 Press any button on the front of the product to display the OSD guide. Next, press [MENU] to display the corresponding menu screen.
- 2 Press [▲/▼] to move to **SETUP&RESET** and press [□/Ⓜ] on the product.

- 3 Press [▲/▼] to move to **Display Time** and press [□/⏻] on the product. The following screen will appear.



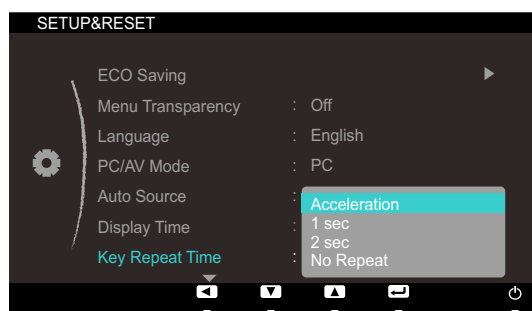
- 4 Press [▲/▼] to move to the option you want and press the [□/⏻].
- 5 The selected option will be applied.

7.7 Key Repeat Time

Control the response rate of a button when the button is pressed.

7.7.1 Configuring Key Repeat Time

- 1 Press any button on the front of the product to display the OSD guide. Next, press [MENU] to display the corresponding menu screen.
- 2 Press [▲/▼] to move to **SETUP&RESET** and press [□/⏻] on the product.
- 3 Press [▲/▼] to move to **Key Repeat Time** and press [□/⏻] on the product. The following screen will appear.



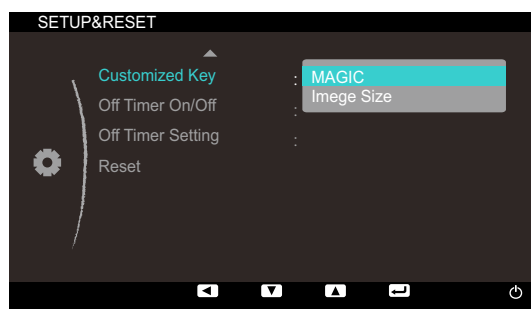
- **Acceleration**, **1 sec**, or **2 sec** can be selected. If **No Repeat** is selected, a command responds only once when a button is pressed.
- 4 Press [▲/▼] to move to the option you want and press the [□/⏻].
 - 5 The selected option will be applied.

7.8 Customized Key

By configuring Customized Key to suit your preferences, you can change the screen settings more conveniently.

7.8.1 Configuring Customized Key

- 1 Press any button on the front of the product to display the OSD guide. Next, press [MENU] to display the corresponding menu screen.
- 2 Press [▲/▼] to move to **SETUP&RESET** and press [□/⊞] on the product.
- 3 Press [▲/▼] to move to **Customized Key** and press [□/⊞] on the product. The following screen will appear.



- Can be set to **MAGIC**, **Image Size**.
- 4 Press [▲/▼] to move to the option you want and press the [□/⊞].
 - 5 The selected option will be applied.

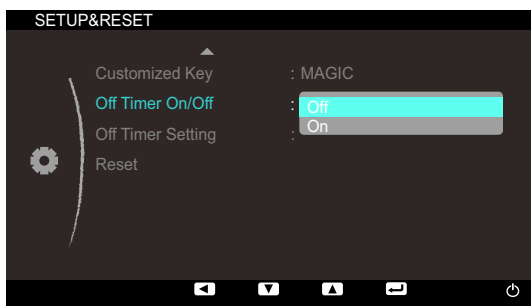
7.9 Off Timer On/Off

Enable or disable the off timer that automatically powers off the product.

7.9.1 Configuring Off Timer On/Off

- 1 Press any button on the front of the product to display the OSD guide. Next, press [MENU] to display the corresponding menu screen.
- 2 Press [▲/▼] to move to **SETUP&RESET** and press [□/⊞] on the product.


- Press [▲/▼] to move to **Off Timer On/Off** and press [□/Ⓜ] on the product. The following screen will appear.



- Off:** Deactivate the off timer so that the product does not power off automatically.
 - On:** Activate the off timer so that the product powers off automatically.
- Press [▲/▼] to move to the option you want and press the [□/Ⓜ].
 - The selected option will be applied.

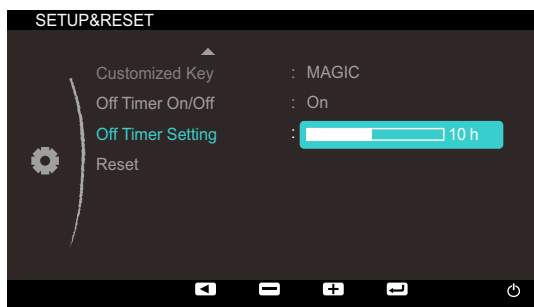
7.10 Off Timer Setting

The off timer can be set within a range of 1 to 23 hours. The product will automatically power off after the specified number of hours.

 This menu is only available when **Off Timer On/Off** is set to **On**.

7.10.1 Configuring Off Timer Setting

- Press any button on the front of the product to display the OSD guide. Next, press [MENU] to display the corresponding menu screen.
- Press [▲/▼] to move to **SETUP&RESET** and press [□/Ⓜ] on the product.
- Press [▲/▼] to move to **Off Timer Setting** and press [□/Ⓜ] on the product. The following screen will appear.



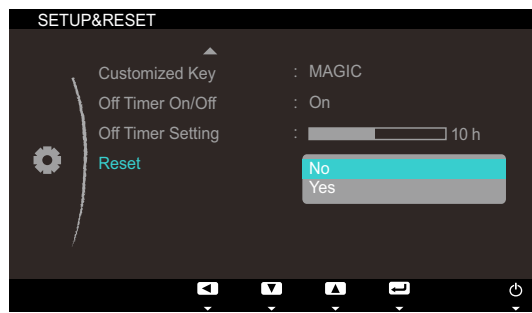
- Press [▲/▼] to configure **Off Timer Setting**.

7.11 Reset

Return all the settings for the product to the default factory settings.

7.11.1 Initializing Settings (Reset)

- 1 Press any button on the front of the product to display the OSD guide. Next, press [MENU] to display the corresponding menu screen.
- 2 Press [▲/▼] to move to **SETUP&RESET** and press [□/⊞] on the product.
- 3 Press [▲/▼] to move to **Reset** and press [□/⊞] on the product. The following screen will appear.



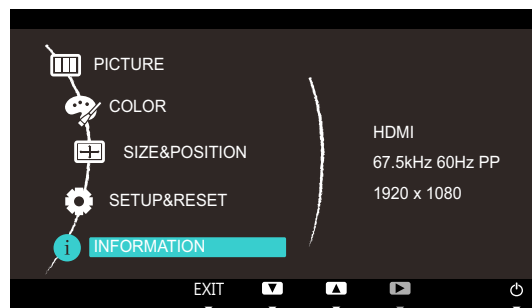
- 4 Press [▲/▼] to move to the option you want and press the [□/⊞].
- 5 The selected option will be applied.

8.1 INFORMATION

View the current input source, frequency and resolution.

8.1.1 Displaying INFORMATION

- 1 Press any button on the front of the product to display the OSD guide. Next, press [MENU] to display the corresponding menu screen.
- 2 Press [▲/▼] to move to **INFORMATION**. The current input source, frequency and resolution will appear.



8.2 Configuring Brightness in the Startup Screen

Adjust the **Brightness** by pressing the [▲/✱] button when the OSD guide is displayed.

 Only available in **Digital** mode.

- 1 Press any button on the front of the product (when no menu screen is displayed) to display the OSD guide. Next, press [▲/✱]. The following screen will appear.



- 2 Adjust the **Brightness** using the [▲/▼] button.

8.3 Configuring Volume in the Startup Screen

Adjust the **Volume** by pressing the [**▲**/⊗] button when the OSD guide is displayed.

 Only available in **HDMI** mode.

- 1 Press any button on the front of the product (when no menu screen is displayed) to display the OSD guide. Next, press [**▲**/⊗]. The following screen will appear.



- 2 Adjust the **Volume** using the [**▲**/▼] button.

9.1 Requirements Before Contacting Samsung Customer Service Center

9.1.1 Testing the Product



Before calling Samsung Customer Service Center, test your product as follows. If the problem persists, contact Samsung Customer Service Center.

Check if your product is operating normally by using the product test function.

If the screen is turned off and the power indicator blinks even though the product is properly connected to a PC, perform a self-diagnosis test.

- 1 Power off both the PC and product.
- 2 Disconnect the cable from the product.
- 3 Power on the product.
- 4 If the **Check Signal Cable** message appears, the product is working normally.



If the screen remains blank, check the PC system, video controller and cable.

9.1.2 Checking the Resolution and Frequency

For a mode that exceeds the supported resolution (refer to "10.3 Standard Signal Mode Table"), the message **Not Optimum Mode.** will appear for a short time.

9.1.3 Check the followings.

Installation issue (PC mode)	
The screen keeps switching on and off.	Check the cable connection between the product and PC, and ensure the connection is secure. (Refer to "3.3 Connecting and Using a PC")
Screen issue	
The power LED is off. The screen will not switch on.	Check that the power cable is connected correctly (Refer to "3.3 Connecting and Using a PC")
The message Check Signal Cable appears.	Check that the cable is properly connected to the product. (Refer to "3.3 Connecting and Using a PC")
	Check that the device connected to the product is powered on.

Screen issue	
"Not Optimum Mode" is displayed.	This message appears if the signal from the graphics card exceeds the maximum resolution or frequency for the product.
	Change the maximum resolution and frequency to suit the product performance, referring to Standard Signal Mode Table (page 75).
The images on the screen look distorted.	Check the cable connection to the product (Refer to "3.3 Connecting and Using a PC")
The screen is not clear. The screen is blurry.	Remove any accessories (video extension cable, etc) and try again.
	Set the resolution and frequency to the recommended level. (Refer to "10.1 General")
The screen appears unstable and shaky.	Check that the resolution and frequency for the PC are within the range of resolution and frequency compatible with the product, and if required, change the settings, referring to Standard Signal Mode Table (page 75) in this manual and the INFORMATION menu on the product.
There are shadows or ghost images left on the screen.	
The screen is too bright. The screen is too dark.	Adjust Brightness (page 46) and Contrast (page 47).
Screen color is inconsistent.	Change the COLOR settings. (Refer to "Configuring Tint" ON PAGE 50)
The colors on the screen have a shadow and are distorted.	Change the COLOR settings. (Refer to "Configuring Tint" ON PAGE 50)
White does not really look white.	Change the COLOR settings. (Refer to "Configuring Tint" ON PAGE 50)
There is no image on the screen and the power LED blinks every 0.5 to 1 second.	The product is in power-saving mode.
	Press any key on the keyboard or move the mouse to return to the previous screen.
Sound issue	
There is no sound.	Check the connection of the audio cable or adjust the volume.
	Check the volume.

Sound issue	
The volume is too low.	Adjust the volume.
	If the volume is still low after turning it up to the maximum level, adjust the volume on your PC sound card or software program.
Source device issue	
A beeping sound is heard when my PC is booting.	If a beeping sound is heard when your PC is booting, have your PC serviced.

9.2 Q & A

Question	Answer
How can I change the frequency?	<p>Set the frequency on your graphics card.</p> <ul style="list-style-type: none">• Windows XP: Select Control Panel → Appearance and Themes → Display → Settings → Advanced → Monitor, and adjust Refresh rate under Monitor settings.• Windows ME/2000: Select Control Panel → Display → Settings → Advanced → Monitor, and adjust Refresh rate under Monitor settings.• Windows Vista: Select Control Panel → Appearance and Personalization → Personalization → Display Settings → Advanced Settings → Monitor, and adjust Refresh rate under Monitor settings.• Windows 7: Select Control Panel → Appearance and Personalization → Display → Screen Resolution → Advanced settings → Monitor, and adjust Refresh rate under Monitor settings.

Question	Answer
<p>How can I change the resolution?</p>	<ul style="list-style-type: none"> • Windows XP: Go to Control Panel → Appearance and Themes → Display → Settings and adjust the resolution. • Windows ME/2000: Go to Control Panel → Display → Settings and adjust the resolution. • Windows Vista: Go to Control Panel → Appearance and Personalization → Personalize → Display Settings and adjust the resolution. • Windows 7: Go to Control Panel → Appearance and Personalization → Display → Adjust Resolution and adjust the resolution.
<p>How do I set power-saving mode?</p>	<ul style="list-style-type: none"> • Windows XP: Set power-saving mode in Control Panel → Appearance and Themes → Display → Screen Saver Settings or BIOS SETUP on the PC. • Windows ME/2000: Set power-saving mode in Control Panel → Display → Screen Saver Settings or BIOS SETUP on the PC. • Windows Vista: Set power-saving mode in Control Panel → Appearance and Personalization → Personalize → Screen Saver Settings or BIOS SETUP on the PC. • Windows 7: Set power-saving mode in Control Panel → Appearance and Personalization → Personalize → Screen Saver Settings or BIOS SETUP on the PC.



Refer to the user manual for your PC or graphics card for further instructions on adjustment..



Specifications

10.1 General

Model Name		S23A700D
Panel	Size	23 Inches (58cm)
	Display area	509.76 mm (H) x 286.74 mm (V) 20.1 inches (H) x 11.3 inches (V)
Synchroni- zation	Horizontal Frequency	30 ~ 140 KHz
	Vertical Frequency	DVI - 50 Hz, 60 Hz, 100 Hz, 120 Hz HDMI - 24 ~ 60 Hz
Display Color		16.7 M Color (Hi-FRC)
Resolution	Optimum resolution	(DVI) 1920 x 1080 @ 50, 1920 x 1080 @ 60, 1920 x 1080 @ 100, 1920 x 1080 @ 120 (HDMI) 1920 x 1080 @ 60, 480p, 720p, 1080i, 1080p
	Maximum resolution	1920 x 1080 @ 120
Maximum Pixel Clock		297 MHz
Power Supply		This product uses 100 to 240V. Refer to the label at the back of the product as the standard voltage can vary in different countries.
Signal connectors		HDMI, DVI
Dimensions (W x H x D) / Weight		533.8 x 395.2 x 197.0 mm / 2.9 kg 21.0 x 15.6 x 7.8 Inches / 6.4 lbs
Environme- ntal considerat- ions	Operating	Temperature : 50°F ~ 104°F (10°C ~ 40°C) Humidity : 10 % ~ 80 %, non-condensing
	Storage	Temperature : -4°F ~ 140°F (-20°C ~ 45°C) Humidity : 5 % ~ 95 %, non-condensing
Plug-and-Play		This monitor can be installed and used with any Plug-and-Play compatible systems. Two-way data exchange between the monitor and PC system optimizes the monitor settings. Monitor installation takes place automatically. However, you can customize the installation settings if desired.
Panel Dots (Pixels)		Due to the nature of the manufacturing of this product, approximately 1 pixel per million (1ppm) may appear brighter or darker on the LCD panel. This does not affect product performance.



The above specifications are subject to change without notice to improve quality.



Class B device (broadcast communications device for home use)

This Class B device designed for home use is registered for EMC requirements and can be used in all regions.

[Recommendation] - EU Only



- Hereby, Samsung Electronics, declares that this MONITOR is in compliance with the essential requirements and other relevant provisions of Directive 1999/5/EC.
- The official Declaration of Conformity may be found at <http://www.samsung.com>, go to Support > Search Product Support and enter the model name.
- This equipment may be operated in all EU countries.

(USA only)

Dispose unwanted electronics through an approved recycler.

To find the nearest recycling location, go to our website:

www.samsung.com/recyclingdirect or call, (877) 278 - 0799

10.2 PowerSaver

The power-saving function of this product reduces power consumption by switching off the screen and changing the color of the power LED if the product is not used for a specified period of time. The power is not turned off in power-saving mode. To switch the screen back on, press any key on the keyboard or move the mouse. Power-savign mode only functions when the product is connected to a PC with a power-saving function.

S23A700D

PowerSaver	Normal Operation	Power saving mode	Power off (Power button)
Power Indicator	On	Blinking	off
Power Consumption	44 W	1 W or lower	1 W or lower



- The displayed power consumption level can vary in different operating conditions or when settings are changed.
- To reduce the power consumption to 0 watts, turn off the power switch on the back of the product or disconnect the power cable. Be sure to disconnect the power cable when you will not be using the product for an extended period of time. To reduce the power consumption to 0 watts when the power switch is not available, disconnect the power cable.

10.3 Standard Signal Mode Table



This product can be set to only one resolution for each screen size to obtain the optimum picture quality due to the nature of the panel. Therefore, a resolution other than the specified resolution may degrade the picture quality. To avoid this, it is recommended that you select the optimum resolution specified for the screen size of your product.

If a signal that belongs to the following standard signal modes is transmitted from your PC, the screen will automatically be adjusted. If the signal transmitted from the PC does not belong to the standard signal modes, the screen may be blank with the power LED on. In such a case, change the settings according to the following table by referring to the graphics card user manual.

DVI Normal & 3D

	Resolution	Horizontal Frequency (kHz)	Vertical Frequency (Hz)	Pixel Clock (MHz)	Sync Polarity (H/V)
Normal	1920 x 1080 60 Hz	67.500	60.000	148.500	+ / +
	1920 x 1080 100 Hz	113.221	99.930	235.500	+ / -
	1920 x 1080 120 Hz	137.260	119.982	285.500	+ / -
3D	1920 x 1080 60 Hz, SBS(Half)	67.500	60.000	148.500	+ / +
	1920 x 1080 50 Hz, SBS(Half)	56.250	50.000	148.500	+ / +
	1920 x 1080 120 Hz, FrameSequencial	137.260	119.982	285.500	+ / -
	1920 x 1080 100 Hz, FrameSequencial	113.221	99.930	235.500	+ / -

HDMI Normal & 3D

	Resolution	Horizontal Frequency (kHz)	Vertical Frequency (Hz)	Pixel Clock (MHz)	Sync Polarity (H/V)
Normal	1920 x 1080 60 Hz	67.500	60.000	148.500	+ / +
	640 x 480 60 Hz, 480p	31.470	59.940	25.180	- / -
	720 x 480 60 Hz, 480p	31.470	59.940	27.000	- / -
	720 x 576 50 Hz, 576p	31.250	50.000	27.000	- / -
	1280 x 720 50 Hz, 720p	37.500	50.000	74.250	+ / +
	1280 x 720 60 Hz, 720p	45.000	60.000	74.250	+ / +
	1920 x 1080 50 Hz, 1080i	28.130	50.000	74.250	+ / +
	1920 x 1080 60 Hz, 1080i	33.750	60.000	74.250	+ / +
	1920 x 1080 24 Hz, 1080p	27.000	24.000	74.250	+ / +
	1920 x 1080 50 Hz, 1080p	56.250	50.000	148.500	+ / +
	1920 x 1080 60 Hz, 1080p	67.500	60.000	148.500	+ / +

	Resolution	Horizontal Frequency (kHz)	Vertical Frequency (Hz)	Pixel Clock (MHz)	Sync Polarity (H/V)
3D	1920 x 1080, 1080p 24 Hz, FramePacking	54.000	24.000	148.500	+ / +
	1280 x 720, 720p 50 Hz, FramePacking	75.000	50.000	148.500	+ / +
	1280 x 720, 720p 60 Hz, FramePacking	90.000	60.000	148.500	+ / +
	1920 x 1080, 1080i 50 Hz, SBS(Half)	28.130	50.000	74.250	+ / +
	1920 x 1080, 1080i 60 Hz, SBS(Half)	33.750	60.000	74.250	+ / +
	1920 x 1080, 1080p 50 Hz, SBS(Half)	56.250	50.000	148.500	+ / +
	1920 x 1080, 1080p 60 Hz, SBS(Half)	67.500	60.000	148.500	+ / +
	1280 x 720, 720p 50 Hz, TNB	37.500	50.000	74.250	+ / +
	1280 x 720, 720p 60 Hz, TNB	45.000	60.000	74.250	+ / +
	1920 x 1080, 1080p 24 Hz, TNB	27.000	24.000	74.250	+ / +



- Horizontal Frequency

The time required to scan a single line from the left to the right side of the screen is called a horizontal cycle. The reciprocal number of a horizontal cycle is called horizontal frequency. Horizontal frequency is measured in kHz.

- Vertical Frequency

Repeating the same picture dozens of times per second allows you to view natural pictures. The repeat frequency is called "vertical frequency" or "refresh rate" and is indicated in Hz.

Contact SAMSUNG WORLDWIDE



If you have any questions or comments relating to Samsung products, please contact the SAMSUNG customer care center.

NORTH AMERICA		
CANADA	1-800-SAMSUNG (726-7864)	http://www.samsung.com
MEXICO	01-800-SAMSUNG (726-7864)	http://www.samsung.com
U.S.A	1-800-SAMSUNG (726-7864)	http://www.samsung.com

LATIN AMERICA		
ARGENTINA	0800-333-3733	http://www.samsung.com
BRAZIL	0800-124-421 4004-0000	http://www.samsung.com
CHILE	800-SAMSUNG (726-7864)	http://www.samsung.com
COLOMBIA	01-8000112112	http://www.samsung.com
COSTA RICA	0-800-507-7267	http://www.samsung.com
DOMINICA	1-800-751-2676	http://www.samsung.com
ECUADOR	1-800-10-7267	http://www.samsung.com
EL SALVADOR	800-6225	http://www.samsung.com
GUATEMALA	1-800-299-0013	http://www.samsung.com
HONDURAS	800-27919267	http://www.samsung.com
JAMAICA	1-800-234-7267	http://www.samsung.com
NICARAGUA	00-1800-5077267	http://www.samsung.com
PANAMA	800-7267	http://www.samsung.com
PERU	0-800-777-08	http://www.samsung.com
PUERTO RICO	1-800-682-3180	http://www.samsung.com
TRINIDAD & TOBAGO	1-800-SAMSUNG (726-7864)	http://www.samsung.com
VENEZUELA	0-800-100-5303	http://www.samsung.com

EUROPE		
ALBANIA	42 27 5755	-
AUSTRIA	0810 - SAMSUNG (7267864, € 0.07/min)	http://www.samsung.com

Appendix

EUROPE		
BELGIUM	02-201-24-18	http://www.samsung.com/be (Dutch) http://www.samsung.com/be_fr (French)
BOSNIA	05 133 1999	-
BULGARIA	07001 33 11	http://www.samsung.com
CROATIA	062 SAMSUNG (062 726 7864)	http://www.samsung.com
CZECH	800 - SAMSUNG (800-726786)	http://www.samsung.com
	Samsung Zrt., česká organizační složka, Oasis Florenc, Sokolovská394/17, 180 00, Praha 8	
DENMARK	70 70 19 70	http://www.samsung.com
FINLAND	030 - 6227 515	http://www.samsung.com
FRANCE	01 48 63 00 00	http://www.samsung.com
GERMANY	01805 - SAMSUNG (726-7864, € 0,14/Min)	http://www.samsung.com
GREECE	2106293100	http://www.samsung.com
HUNGARY	06-80-SAMSUNG (726-7864)	http://www.samsung.com
ITALIA	800-SAMSUNG (726-7864)	http://www.samsung.com
KOSOVO	+381 0113216899	-
LUXEMBURG	261 03 710	http://www.samsung.com
MACEDONIA	023 207 777	-
MONTENEGRO	020 405 888	-
NETHERLANDS	0900 - SAMSUNG (0900-7267864) (€ 0,10/Min)	http://www.samsung.com
NORWAY	815-56 480	http://www.samsung.com
POLAND	0 801 1SAMSUNG (172678) 022 - 607 - 93 - 33	http://www.samsung.com
PORTUGAL	80820 - SAMSUNG (726-7864)	http://www.samsung.com
RUMANIA	08010 SAMSUNG (08010 7267864) - doar din rețeaua Romtelecom, tarif local; 021.206.01.10 - din orice rețea, tarif normal	http://www.samsung.com
SERBIA	0700 Samsung (0700 726 7864)	http://www.samsung.com
SLOVAKIA	0800 - SAMSUNG (0800-726 786)	http://www.samsung.com/sk

Appendix

EUROPE		
SPAIN	902 - 1 - SAMSUNG (902 172 678)	http://www.samsung.com
SWEDEN	0771 726 7864 (SAMSUNG)	http://www.samsung.com
SWITZERLAND	0848-SAMSUNG (7267864, CHF 0.08/min)	http://www.samsung.com/ch http://www.samsung.com/ch_fr (French)
U.K	0330 SAMSUNG (7267864)	http://www.samsung.com
EIRE	0818 717100	http://www.samsung.com
LITHUANIA	8-800-77777	http://www.samsung.com
LATVIA	8000-7267	http://www.samsung.com
ESTONIA	800-7267	http://www.samsung.com
TURKEY	444 77 11	http://www.samsung.com

CIS		
RUSSIA	8-800-555-55-55	http://www.samsung.com
GEORGIA	8-800-555-555	-
ARMENIA	0-800-05-555	-
AZERBAIJAN	088-55-55-555	-
KAZAKHSTAN	8-10-800-500-55-500 (GSM: 7799)	http://www.samsung.com
UZBEKISTAN	8-10-800-500-55-500	http://www.samsung.com
KYRGYZSTAN	00-800-500-55-500	http://www.samsung.com
TADJIKISTAN	8-10-800-500-55-500	http://www.samsung.com
UKRAINE	0-800-502-000	http://www.samsung.com/ua http://www.samsung.com/ua_ru
BELARUS	810-800-500-55-500	-
MOLDOVA	00-800-500-55-500	-

ASIA PACIFIC		
AUSTRALIA	1300 362 603	http://www.samsung.com
NEW ZEALAND	0800 SAMSUNG (0800 726 786)	http://www.samsung.com
CHINA	400-810-5858	http://www.samsung.com

Appendix

ASIA PACIFIC		
HONG KONG	(852) 3698 4698	http://www.samsung.com/hk http://www.samsung.com/hk_en/
INDIA	3030 8282, 1800 3000 8282	http://www.samsung.com
INDONESIA	0800-112-8888 021-5699-7777	http://www.samsung.com
JAPAN	0120-327-527	http://www.samsung.com
MALAYSIA	1800-88-9999	http://www.samsung.com
PHILIPPINES	1-800-10-SAMSUNG (726-7864) 1-800-3-SAMSUNG (726-7864) 1-800-8-SAMSUNG (726-7864) 02-5805777	http://www.samsung.com
SINGAPORE	1800-SAMSUNG (726-7864)	http://www.samsung.com
THAILAND	1800-29-3232 02-689-3232	http://www.samsung.com
TAIWAN	0800-329-999	http://www.samsung.com
VIETNAM	1 800 588 889	http://www.samsung.com

MIDDIE EAST		
IRAN	021-8255	http://www.samsung.com http://www.samservice.com
OMAN	800-SAMSUNG(726-7864)	http://www.samsung.com
KUWAIT	183-2255	http://www.samsung.com
BAHRAIN	8000-4726	http://www.samsung.com
EGYPT	08000-726786	http://www.samsung.com
JORDAN	800-22273	http://www.samsung.com
MOROCCO	080 100 2255	http://www.samsung.com
SAUDI ARABIA	9200-21230	http://www.samsung.com
U.A.E	800-SAMSUNG (726-7864)	http://www.samsung.com

AFRICA		
NIGERIA	0800 - SAMSUNG (726-7864)	http://www.samsung.com
SOUTH AFRICA	0860-SAMSUNG (726-7864)	http://www.samsung.com

Correct Disposal

Correct Disposal of This Product (Waste Electrical & Electronic Equipment)



(Applicable in the European Union and other European countries with separate collection systems)

This marking on the product, accessories or literature indicates that the product and its electronic accessories (e.g. charger, headset, USB cable) should not be disposed of with other household waste at the end of their working life. To prevent possible harm to the environment or human health from uncontrolled waste disposal, please separate these items from other types of waste and recycle them responsibly to promote the sustainable reuse of material resources.

Household users should contact either the retailer where they purchased this product, or their local government office, for details of where and how they can take these items for environmentally safe recycling.

Business users should contact their supplier and check the terms and conditions of the purchase contract. This product and its electronic accessories should not be mixed with other commercial wastes for disposal.

Correct disposal of batteries in this product



(Applicable in the European Union and other European countries with separate battery return systems.)

This marking on the battery, manual or packaging indicates that the batteries in this product should not be disposed of with other household waste at the end of their working life. Where marked, the chemical symbols Hg, Cd or Pb indicate that the battery contains mercury, cadmium or lead above the reference levels in EC Directive 2006/66. If batteries are not properly disposed of, these substances can cause harm to human health or the environment.

To protect natural resources and to promote material reuse, please separate batteries from other types of waste and recycle them through your local, free battery return system.

Terminology

OSD(On Screen Display)

On screen display (OSD) allows you to configure on-screen settings to optimize the picture quality as required. It allows you to change the screen brightness, tint, size and many other settings using menus displayed on the screen.

Gamma

The Gamma menu adjusts the grey scale that represents middle tones on the screen. Adjusting the brightness brightens the whole screen, but adjusting Gamma only brightens the medium brightness.

Grey scale

Scale refers to levels of color intensity that show variations of color change from darker areas to brighter areas on the screen. Changes to the screen brightness are expressed with black and white variation, and grey scale refers to the medium area between black and white. Changing the grey scale through Gamma adjustment will change the medium brightness on the screen.

Scanning rate

Scanning rate, or refresh rate, refers to the frequency of screen refreshes. Screen data is transmitted as it refreshes to display an image, although the refreshing is invisible to the naked eye. The number of screen refreshes is called scanning rate and is measured in Hz. A scanning rate of 60Hz means that the screen refreshes 60 times per second. The screen scanning rate depends on the performance of the graphics cards in your PC and monitor.

Horizontal Frequency

Characters or images displayed on the monitor screen consist of numerous dots (pixels). Pixels are transmitted in horizontal lines, which are then arranged vertically to create an image. The horizontal frequency is measured in kHz and represents how many times horizontal lines per second are transmitted and displayed on the monitor screen. A horizontal frequency of 85 means that the horizontal lines that make up an image are transmitted 85 000 times per second, and the horizontal frequency is indicated in 85kHz.

Vertical Frequency

One image is made of numerous horizontal lines. The vertical frequency is measured in Hz and represents how many images can be created per second by those horizontal lines. A vertical frequency of 60 means that an image is transmitted 60 times per second. The vertical frequency is also called "refresh rate" and affects screen flicker.

Resolution

Resolution is the number of horizontal pixels and vertical pixels that form a screen. It represents the level of display detail.

A higher resolution displays a greater amount of information on the screen and is suitable for performing multiple tasks at the same time.

E.g. A resolution of 1920 x 1080 consists of 1,920 horizontal pixels (horizontal frequency) and 1,080 vertical lines (vertical resolution).

Plug & Play

The Plug & Play feature allows the automatic exchange of information between a monitor and PC to produce an optimum display environment.

The monitor uses VESA DDC (international standard) to execute Plug & Play.

Numerics

3D 28

3D Mode 28

3D→2D 30

A

Adjusting the Product Tilt 27

Anti-theft Lock 26

Appendix 78

Auto Source 61

C

Changing the Resolution Using a PC 38

Checking the Resolution and Frequency 68

Cleaning 3

Connecting Headphones 42

Connecting to a PC 36

Connection Using an HDMI Cable 40

Contact SAMSUNG WORLDWIDE 78

Correct posture to use the product 12

Customized Key 63

D

Driver Installation 38

F

Frontal Buttons 22

G

Green 50

H

HDMI Black Level 49

I

INFORMATION 66

M

MAGIC 43

O

OSD control lock 23

P

PowerSaver 74

Precautions for Storage 4

R

Red 50

Removing the Packaging 18

Response Time 48

Reverse Side 25

S

Safety Precautions 4

Screen Fit 54

Securing the Installation Space 4

Setting Optimum Resolution 42

Standard Signal Mode Table 75

SyncMaster 3D Game LauncherTriDef 3D 32

T

Testing the Product 68

Tidying Up the Connected Cables 26

V

Volume 67

Index

W

Wide 54