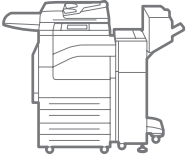


WorkCentre®
7120
Tabloid-size
Color
Multifunction Printer



Xerox® WorkCentre® 7120 Multifunction Printer

Enabling big
business performance



WorkCentre® 7120 Multifunction Printer

Efficiently powerful performance. Seamlessly create and share business-critical information, in full office color, and take your business or workgroup to a higher level of performance — without hurting the bottom line.

Streamline your processes

Increase productivity with powerful workflows that optimize business efficiency. The compact WorkCentre 7120 is loaded with features that save time and simplify device management.

- **Fast output.** Copy and print both single-sided and two-sided documents at up to 20 ppm in color or black-and-white.
- **Scan, print, copy, fax and route files — all at once.** Concurrent operation maximizes office productivity, letting multiple users perform different office tasks simultaneously.
- **Never wait for a critical print job.** The Print Around feature holds a job in need of resources (such as a special paper size) and prints the next job in the queue.
- **Superior scanning.** Easily share files or introduce electronic archiving with powerful scan capabilities. Create text-searchable files at the device for easy retrieval. Compression technology reduces network load to enable fast transmission.
- **Automate everyday workflows.** Create job flow sheets to automatically route documents to predefined locations, including email addresses, fax destinations and FTP/SMB sites.
- **Remotely manage the device.** CentreWare® IS Embedded Web Server automates installation, troubleshooting, feature set-up and upgrading.
- **Easy, accurate billing and supplies replenishment.** Smart eSolutions MeterAssistant® collects and submits meter reads and SuppliesAssistant® enables automatic ordering of ink to save time.

Responsible color

The budget-friendly WorkCentre 7120 helps you manage costs and save money.

- **Customize your print driver settings** for economy and efficiency. For example, set two-sided printing or choose N-up for printing multiple pages on a single sheet as your default. Adjust settings for specific applications, such as always printing emails in black-and-white.
- **Manage and track device usage.** Internal Auditron sets limits of device features for analysis and billing purposes. Xerox Standard Accounting provides reports for greater cost control of all device functions. Advanced solutions from Xerox Alliance Partners deliver even more helpful tools for larger office environments.
- **Reduce fax costs.** The Fax over IP kit sends and receives faxes using the T.38 protocol.



Easy on the environment

The WorkCentre 7120 multifunction printer conserves natural resources with no loss of performance, reliability or output quality.

- **Reduce energy consumption with Xerox innovations.** A scanner based on LED lighting instead of traditional Xenon lamps consumes only 1/3 the power. Plus, innovative toner design requires a lower fusing temperature than traditional toner while offering glossy, beautiful office graphics.
- **Work quietly.** Our quietest workgroup color MFP stays productive while emitting low noise levels.
- **Save time and paper** with 100 percent efficient two-sided printing on letter- / A4-size media — it's just as fast as printing one-sided pages. Or go paperless and distribute digital files quickly and easily.
- **Paperless faxing.** LAN Fax sends faxes directly from applications on your desktop. Incoming faxes can be viewed as thumbnail images on the user interface — so you only print what's important.

WorkCentre® 7120 Quick Facts

- Print/copy up to 20 ppm color and black-and-white
- High impact color with built-in control and accounting
- Powerful scan and fax capabilities
- Robust security features
- Space-saving footprint
- Paper capacity up to 2,130 sheets



Print / Copy / Scan / Fax / Email



11 x 17 in.

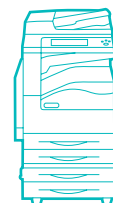


20 ppm

WxDxH (base):

23 x 25.2 x 44.6 in.

585 x 640 x 1,132 mm



Security without IT

Robust security features safeguard the full gamut of entry and exit points to ensure the safety of critical information. Implement enterprise security solutions without the need for skilled IT know-how.

- **Secure Print** keeps documents private by holding print jobs in the queue until the user enters the password.
- **Password protected PDFs** require a password to open and view a sensitive scan.
- **Data Security Kit keeps your information safe.** Encrypt resident data on the device and electronically erase images on the hard drive.
- **Full system Common Criteria (ISO 15480) Certification*** at EAL3 ensures that the WorkCentre 7120 conforms to the most stringent security standards and regulations.

*Submission pending



Fits your office

- 1 With a compact footprint, the WorkCentre 7120 delivers more functionality while taking up less space. Add basic finishing capabilities with the space-saving Integrated Office Finisher.
- 2 Duplex automatic document feeder holds a generous 110 sheets of paper.

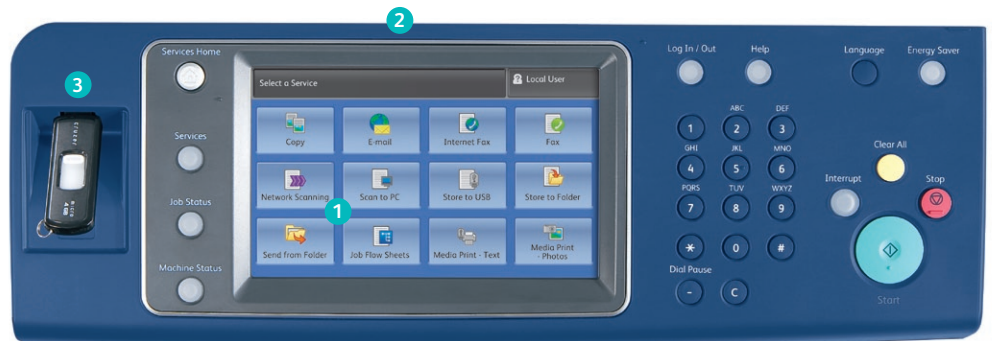
- 3 50-sheet bypass tray for specialty media and sizes.
- 4 Choose the configuration that meets your needs: a two-520-sheet tray with stand configuration holding up to 1,040 sheets of 11 x 17 in. paper, or a four-tray configuration holding up to 2,080 sheets.

- 5 Office Finisher LX (with Booklet Maker option) provides advanced finishing functions at a value price.



Simplifies your workflows

- 1 The large, 7-inch color touch screen makes it easy to find the functions you need. Preview documents before printing with the Thumbnail Preview option.
- 2 Extend the functionality of your WorkCentre 7120. With Xerox Workflow Solutions, you can connect to document processing tools needed to get your work done faster, more efficiently and more effectively.
- 3 USB Port option lets you scan to or print from any standard USB memory device for portability and convenience.



WorkCentre® 7120

Color Multifunction Printer



	WorkCentre 7120	WorkCentre 7120T
Speed	Up to 20 ppm color / 20 black-and-white	
Duty Cycle	Up to 50,000 pages / month	
Paper Handling Paper input	Standard	Duplex Automatic Document Feeder: 110 sheets; Size: 5.5 x 8.5 in. to 11 x 17 in. / A5 to A3; Custom sizes: 3.3 x 4.9 in. to 11.7 x 17 in. / 85 x 125 mm to 297 x 432 mm
		Bypass Tray: 50 sheets; Custom sizes: 3.5 x 3.9 in. to 11.7 x 17 in. / 89 x 98 mm to 297 x 432 mm
		Tray 1 and 2: 520 sheets each; Sizes: 5.5 x 8.5 in. to 11 x 17 in. / A5 to A3; Custom sizes: 5.5 x 7.2 in. to 11.7 x 17 in. / 140 x 182 mm to 297 x 432 mm
	Optional	Tray 1 – 4: 520 sheets each; Sizes: 5.5 x 8.5 in. to 11 x 17 in. / A5 to A3; Custom sizes: 5.5 x 7.2 in. to 11.7 x 17 in. / 140 x 182 mm to 297 x 432 mm
		Envelope Tray: Up to 60 envelopes: #10 commercial, Monarch, DL, C5, Custom sizes: 3.9 x 5.8 in. to 6.4 x 9.5 in. / 98 x 148 mm to 162 x 241 mm
Paper output	Standard	Dual Catch Tray: 250-sheets each, Lower tray offsets
	Optional	Integrated Office Finisher: 500-sheet stacker, 50 sheets stapled, single-position stapling
		Office Finisher LX: 2,000-sheet stacker, 50 sheets stapled, 3-position stapling, optional hole-punch, optional booklet maker (score, saddle stitch)
		Convenience Stapler: staples 50 sheets
Copy First-page-out-time	As fast as 8.1 seconds color / 6.5 seconds black-and-white	
Resolution (max)	600 x 600 dpi	
Copy features	Automatic two-sided, Electronic pre-collation, Automatic tray selection, Build Job, Negative/Mirror image, Automatic booklet creation, Multi-up, Auto RE, Mixed-size originals, Covers insertion, Sample set, Book copying, Annotation, Auto color selection, Area designation, Poster mode, Watermarks, ID Card Copy	
Print First-page-out-time	As fast as 13 seconds color / 11 seconds black-and-white	
Resolution (max)	600 x 600 x 4 dpi	
Memory	2 GB plus 80 GB hard drive	
Connectivity	10/100Base-TX Ethernet, High-Speed USB 2.0 direct print, Wireless Ethernet 802.11b (via third-party adapters)	
Page description languages	PDF, XPS®, PCL® 6 emulation, HP-GL2™, Optional Adobe® PostScript® 3™	
Print features	Automatic two-sided, Secure print, Delay print, Sample set, Booklet creation, Cover selection, Paper selection by attribute, N-up, Watermarks, Banner sheets, Fit to new paper size, Output tray selection, Optional print from USB	
Fax	Optional Walkup PSTN fax (one-line and three-line options) with Internet fax, Fax over IP (T.38) Kit, Network Server Fax Enablement Kit	
Fax features	LAN fax, Fax Forward, Two-sided Send and Receive, print on fax up to 11 x 17 in. / A3, Fax Build Job, Optional Thumbnail Preview	
Scan	Scan to Email, Scan to Folder	
Scan options	Scan to USB, Scan Kit (Network Scan, Text searchable PDF, PDF/A, XPS, MRC compression, Thumbnail Preview)	
Additional software options	Scan to PC Desktop®, Various Xerox Alliance Partner Solutions, SMARTsend®	
Accounting	Auditron, Xerox Standard Accounting (Copy, Print, Fax, Scan), Enabling Color access control, Optional Network Accounting Enablement Kit (Alliance Partners)	
Security	Standard	Secure Print, Authentication with LDAP/Kerberos/SMB/CAC, Password Protected PDF, FIPS 140-2 encryption, S/MIME Encrypted Email, IPsec, 802.1x, SNMP v3.0
	Optional	Data Security Kit (Image Overwrite, Data Encryption, Audit Log), CAC, Secure Access Unified ID System
Operating Systems	Windows XP SP1 and above/Server 2003/Server 2008/Vista/Windows 7; Mac OS 10.3 and above; AIX 5 v5.3; HP UX 11.0/11i v2; Solaris 8/9/10; Linux Fedora Core 1/5; Red Hat ES4; SUSE 10/11	
Other Options	USB Enablement (Print from/Scan to USB), Media Card Reader, Common Access Card Enablement Kit, Thumbnail Preview, Work Surface, Foreign Device Interface, Text searchable PDF, PDF/A, XPS	



For more information, call **1-800-ASK-XEROX** or visit us at **www.xerox.com/office**

