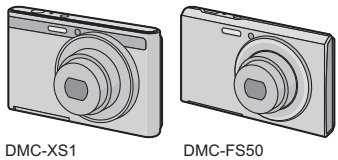


ENGLISH

Panasonic®



DMC-XS1

DMC-FS50

## Basic Operating Instructions

### Digital Camera

Model No. **DMC-XS1**  
**DMC-FS50**



Please read these instructions carefully before using this product, and save this manual for future use.

**More detailed instructions on the operation of this camera are contained in “Operating Instructions for advanced features (PDF format)” in the supplied CD-ROM. Install it on your PC to read it.**



Web Site: <http://www.panasonic-europe.com>

Model number suffix “EB” denotes UK model.

Pursuant to at the directive 2004/108/EC, article 9(2)  
Panasonic Testing Centre  
Panasonic Marketing Europe GmbH  
Winsbergring 15, 22525 Hamburg, Germany

Panasonic Corporation  
Web Site: <http://panasonic.net>

© Panasonic Corporation 2013

EB

VQT4P50  
F1212SM0

### Information for Users on Collection and Disposal of Old Equipment and used Batteries



These symbols on the products, packaging, and/or accompanying documents mean that used electrical and electronic products and batteries should not be mixed with general household waste. For proper treatment, recovery and recycling of old products and used batteries, please take them to applicable collection points, in accordance with your national legislation and the Directives 2002/96/EC and 2006/66/EC. By disposing of these products and batteries correctly, you will help to save valuable resources and prevent any potential negative effects on human health and the environment which could otherwise arise from inappropriate waste handling. For more information about collection and recycling of old products and batteries, please contact your local municipality, your waste disposal service or the point of sale where you purchased the items. Penalties may be applicable for incorrect disposal of this waste, in accordance with national legislation.

**For business users in the European Union**  
If you wish to discard electrical and electronic equipment, please contact your dealer or supplier for further information.

#### [Information on Disposal in other Countries outside the European Union]

These symbols are only valid in the European Union. If you wish to discard these items, please contact your local authorities or dealer and ask for the correct method of disposal.

**Note for the battery symbol (bottom two symbol examples):**

This symbol might be used in combination with a chemical symbol. In this case it complies with the requirement set by the Directive for the chemical involved.



Dear Customer,

We would like to take this opportunity to thank you for purchasing this Panasonic Digital Camera. Please read these Operating Instructions carefully and keep them handy for future reference. Please note that the actual controls and components, menu items, etc. of your Digital Camera may look somewhat different from those shown in the illustrations in these Operating Instructions.

**Carefully observe copyright laws.**

- Recording of pre-recorded tapes or discs or other published or broadcast material for purposes other than your own private use may infringe copyright laws. Even for the purpose of private use, recording of certain material may be restricted.

### Information for Your Safety

#### WARNING:

- To reduce the risk of fire, electric shock or product damage,
- Do not expose this unit to rain, moisture, dripping or splashing.
- Use only the recommended accessories.
- Do not remove covers.
- Do not repair this unit by yourself. Refer servicing to qualified service personnel.

The socket outlet shall be installed near the equipment and shall be easily accessible.

#### ■ Product identification marking

Product	Location
Digital Camera	Bottom

#### ■ About the battery pack

##### CAUTION

- Danger of explosion if battery is incorrectly replaced. Replace only with the type recommended by the manufacturer.
- When disposing the batteries, please contact your local authorities or dealer and ask for the correct method of disposal.

- Do not heat or expose to flame.
- Do not leave the battery(ies) in a car exposed to direct sunlight for a long period of time with doors and windows closed.

##### Warning

Risk of fire, explosion and burns. Do not disassemble, heat above 60 °C or incinerate.

#### ■ About the AC adaptor (supplied)

##### CAUTION!

- To reduce the risk of fire, electric shock or product damage,
- Do not install or place this unit in a bookcase, built-in cabinet or in another confined space. Ensure this unit is well ventilated.

- The unit is in the standby condition when the AC adaptor is connected. The primary circuit is always “live” as long as the AC adaptor is connected to an electrical outlet.

#### ■ Cautions for Use

- Do not use any other USB connection cables except the supplied one or a genuine Panasonic USB connection cable (DMW-USBC1: optional).
- Do not use any other AC adaptors except the supplied one.
- Always use a genuine Panasonic AV cable (DMW-AVC1: optional).
- Always use genuine Panasonic batteries (DMW-BCL7E).
- If you use other batteries, we cannot guarantee the quality of this product.
- Keep the Memory Card out of reach of children to prevent swallowing.

**Keep this unit as far away as possible from electromagnetic equipment (such as microwave ovens, TVs, video games etc.).**

- If you use this unit on top of or near a TV, the pictures and/or sound on this unit may be disrupted by electromagnetic wave radiation.
- Do not use this unit near cell phones because doing so may result in noise adversely affecting the pictures and/or sound.
- Recorded data may be damaged, or pictures may be distorted, by strong magnetic fields created by speakers or large motors.
- Electromagnetic wave radiation generated by microprocessors may adversely affect this unit, disturbing the pictures and/or sound.
- If this unit is adversely affected by electromagnetic equipment and stops functioning properly, turn this unit off and remove the battery or disconnect AC adaptor (supplied). Then reinsert the battery or reconnect AC adaptor and turn this unit on.

**Do not use this unit near radio transmitters or high-voltage lines.**

- If you record near radio transmitters or high-voltage lines, the recorded pictures and/or sound may be adversely affected.

#### ■ About illustrations in these operating instructions

The procedure is described for (DMC-XS1) as an example.

### Accessories

Check that all the accessories are supplied before using the camera. Product numbers correct as of January 2013. These may be subject to change.

**Battery Pack** (DMW-BCL7E)

**AC Adaptor** (VSK0775)

**USB Connection Cable**  
(K1HY08YY0031)

**Hand Strap** (VFC4297)

**CD-ROM** (VFF1095)

- Software
  - PHOTOfunSTUDIO 9.0 LE (Windows 8/7/Vista/XP)
  - LoiLoScope 30 day full trial version (Windows 8/7/Vista/XP)  
(This will only install a shortcut to the trial version download site.)
- Operating Instructions for advanced features

- Consult the dealer or Panasonic if you lose the supplied accessories. (You can purchase the accessories separately.)

#### ■ Optional Accessories

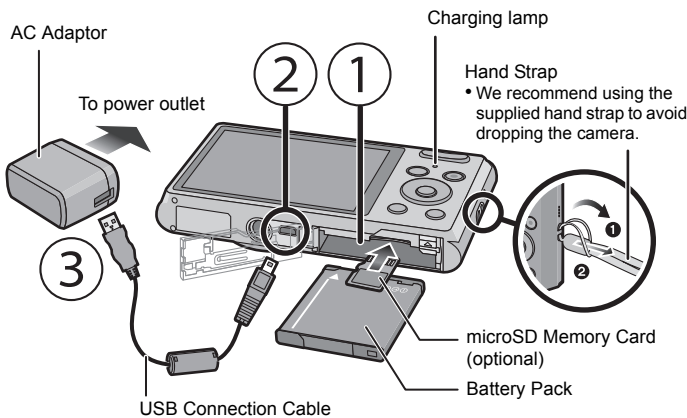
Battery Pack: DMW-BCL7

USB Connection Cable: DMW-USBC1

AV Cable: DMW-AVC1

- Accessories and/or model numbers may vary between countries. Consult your local dealer.

### Preparations

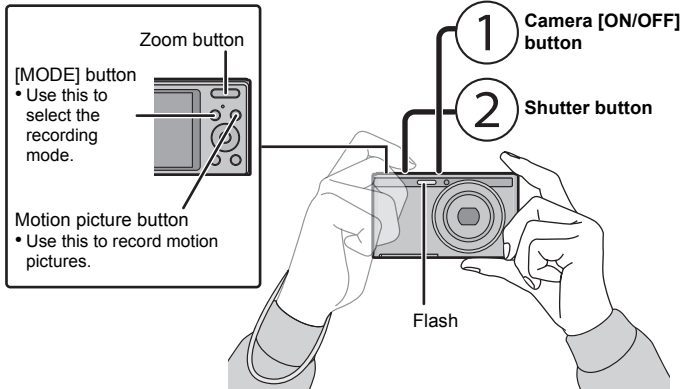


Charging time

Approx. 150 min

### Recording

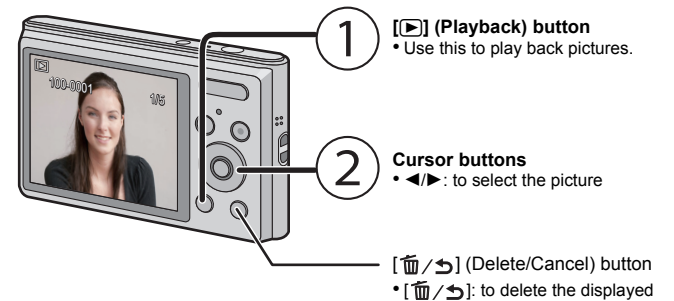
- Set the date and time before using the camera.



Number of recordable pictures

Approx. 260 pictures

### Playback



### Specifications

Specifications are subject to change without notice.

**Digital Camera:** Information for your safety

<b>Power Source:</b>	DC 5 V
<b>Power Consumption:</b>	1.1 W (When recording) 0.6 W (When playing back)

<b>Camera effective pixels</b>	16,100,000 pixels
<b>Image sensor</b>	1/2.33" CCD, total pixel number 16,600,000 pixels, Primary colour filter
<b>Lens</b>	Optical 5× zoom, f=4.3 mm to 21.5 mm (35 mm film camera equivalent: 24 mm to 120 mm)/F2.8 (Wide) to F6.9 (Tele)
<b>Image stabiliser</b>	Optical method
<b>Focus range</b>	Normal/ Intelligent auto 5 cm (0.16 feet) (Wide)/ 1 m (3.3 feet) (Tele) to ∞ Scene Mode There may be differences in the above settings.
<b>Shutter system</b>	Electronic shutter+ Mechanical shutter
<b>Shutter speed</b>	8 seconds to 1/1600th of a second [Starry Sky] Mode: 15 seconds, 30 seconds, 60 seconds
<b>Exposure (AE)</b>	Auto (Programme AE)
<b>Metering mode</b>	Multiple
<b>LCD monitor</b>	2.7" TFT LCD (4:3) (Approx. 230,000 dots) (field of view ratio about 100%)
<b>Microphone</b>	Monaural
<b>Speaker</b>	Monaural
<b>Recording media</b>	Built-in Memory (Approx. 90 MB)/microSD Memory Card/microSDHC Memory Card
<b>Recording file format</b>	
<b>Still Picture</b>	JPEG (based on “Design rule for Camera File system”, based on “Exif 2.3” standard)
<b>Motion pictures</b>	“QuickTime Motion JPEG” (motion pictures with audio)
<b>Interface</b>	
<b>Digital</b>	“USB 2.0” (High Speed) * Data from the PC can not be written to the camera using the USB connection cable.
<b>Analogue video</b>	NTSC/PAL Composite (Switched by menu)
<b>Audio</b>	Audio line output (monaural)
<b>Terminal</b>	
<b>[AV OUT/DIGITAL]</b>	Dedicated jack (8 pin)
<b>Dimensions</b> (excluding the projecting parts)	(DMC-XS1) Approx. 93.8 mm (W)×53.5 mm (H)×17.6 mm (D) [3.69”(W)×2.11”(H)×0.69”(D)] (DMC-FS50) Approx. 93.0 mm (W)×54.6 mm (H)×18.0 mm (D) [3.66”(W)×2.15”(H)×0.71”(D)]
<b>Mass</b>	(DMC-XS1) Approx. 103 g/0.23 lb (with card and battery) Approx. 88 g/0.19 lb (excluding card and battery) (DMC-FS50) Approx. 100 g/0.22 lb (with card and battery) Approx. 85 g/0.19 lb (excluding card and battery)
<b>Operating temperature</b>	0 °C to 40 °C (32 °F to 104 °F)
<b>Operating humidity</b>	10%RH to 80%RH

**AC Adaptor (Panasonic VSK0775):**

Information for your safety

<b>Input:</b>	~110 V to 240 V, 50/60 Hz, 0.2 A
<b>Output:</b>	===5 V, 800 mA

**Battery Pack (lithium-ion) (Panasonic DMW-BCL7E):**

Information for your safety

<b>Voltage/capacity:</b>	3.6 V/690 mAh
--------------------------	---------------

#### Sales and Support Information

Customer Communications Centre

- For customers within the UK: 0844 844 3899
- For customers within Ireland: 01 289 8333
- Monday – Friday 9:00 am – 5:00 pm (Excluding public holidays).
- For further support on your product, please visit our website: [www.panasonic.co.uk](http://www.panasonic.co.uk)

Direct Sales at Panasonic UK

- Order accessory and consumable items for your product with ease and confidence by phoning our Customer Communications Centre Monday – Friday 9:00 am – 5:00 pm (Excluding public holidays).
- Or go on line through our Internet Accessory ordering application at [www.pas-europe.com](http://www.pas-europe.com).
- Most major credit and debit cards accepted.
- All enquiries transactions and distribution facilities are provided directly by Panasonic UK.
- It couldn't be simpler!
- Also available through our Internet is direct shopping for a wide range of finished products. Take a browse on our website for further details.