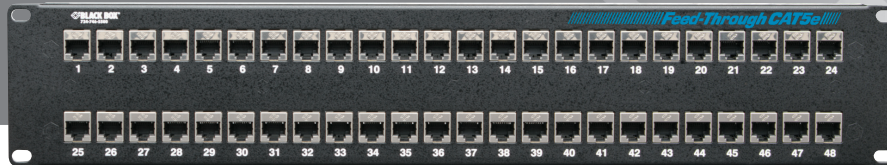


## Feed-Through CAT5e Patch Panels

# No punchdowns needed with this feed-through panel.

- Unique design features RJ-45 plugs on both sides of the patch panel.
- Feed-through connectors provide super-easy cable management.
- Perfect for voice and data transmission up to 1 Gigabit.



### Specifications

**Standards** — Category 5e

**Connectors** — JPM804A-R2: (24) shielded RJ-45 on front, (24) shielded RJ-45 on back;  
JPM806A-R2: (48) shielded RJ-45 on front, (48) shielded RJ-45 on back;  
JPM808A-R2: (24) unshielded RJ-45 on front, (24) unshielded RJ-45 on back;  
JPM810A-R2: (48) unshielded RJ-45 on front, (48) unshielded RJ-45 on back

**Size** — JPM804A-R2, JPM808A-R2: 1.75"H (1U) x 19"W x 4.5"D (4.4 x 48.3 x 11.4 cm);  
JPM806A-R2, JPM810A-R2: 3.5"H (2U) x 19"W x 4.5"D (8.9 x 48.3 x 11.4 cm)

**Weight** — JPM804A-R2: 1.485 lb. (0.675 kg);  
JPM806A-R2: 2.78 lb. (1.265 kg);  
JPM808A-R2: 1.18 lb. (0.54 kg);  
JPM810A-R2: 2.18 lb. (0.993 kg)

### Overview

The Feed-Through CAT5e Patch Panels meet Category 5e performance requirements and provide patching without punching down the wires to the ports. These sturdy panels install in relay racks or communications cabinets.

After ordering a CAT5e Patch Panel, you should have received the following items:

- (1) CAT5e Patch Panel
- (1) cable management bar for JPM804A-R2 and JPM808A-R2, or (2) cable management bars for JPM806A-R2 and JPM810A-R2
- (4) 10-32 cuphead screws
- (4) 12-24 cuphead screws
- This users' manual

If anything is missing or damaged, please contact Black Box at 724-746-5500.

For installation instructions, turn this page over...

### Customer Support Information

Order toll-free in the U.S.: Call 877-877-BBOX (outside U.S. call 724-746-5500)  
FREE technical support 24 hours a day, 7 days a week: Call 724-746-5500 or fax 724-746-0746  
Mailing address: Black Box Corporation, 1000 Park Drive, Lawrence, PA 15055-1018  
Web site: [www.blackbox.com](http://www.blackbox.com) • E-mail: [info@blackbox.com](mailto:info@blackbox.com)

## Installation

Use the Feed-Through CAT5e Patch Panels with or without the cable management bar. It neatly organizes and supports the cables that are installed in rear of the patch panel.

### Without using the cable management bar:

1. Find an empty rack space on a relay rack or communications cabinet.
2. Install the panel with the supplied 10-32 or 12-24 cuphead screws.
3. Install the RJ-45 patch cables on the front and rear connectors to make the connections.

### Using the cable management bar:

1. Remove the two cuphead screws from each side of the patch panel.
2. Position the cable management bar on the patch panel and reinstall the two cuphead screws.
3. Install a patch cable in one of the panel's rear ports. Unscrew the corresponding silver clip behind the installed port and position the patch cable under the silver bracket. Tighten the screw.
4. For a 48-port patch panel (JPM806A-R2 or JPM810A-R2), repeat Steps 1 through 3 to install the second cable management bar.

Installation is complete.



© Copyright 2011. Black Box Corporation. All rights reserved. Printed in U.S.A. Black Box® and the Double Diamond logo are registered trademarks of BB Technologies, Inc. Any third-party trademarks appearing in this manual are acknowledged to be the property of their respective owners.

JPM804A-R2, version 2

FREE, live, 24/7 Tech Support is just 30 seconds away.  
724-746-5500 | [blackbox.com](http://blackbox.com)