

Take the
first step



EOS 1100D

you can



Canon

EOS 1100D



Take the first step

Image quality

A large APS-C sized sensor, 12-megapixel resolution and 14-bit DIGIC 4 image processing combine to deliver image quality you'll love.

Easy to use

DSLR photography doesn't have to be difficult. The EOS 1100D has been designed from the ground up to let you concentrate on what is most important - finding and taking great images.

EOS System

The EOS 1100D is supported by a system of lenses and accessories used by professionals all over the world, making it an ideal first step into the world of EOS photography.

Tv (Shutter Speed): 1/400
Av (Aperture Value): f/7.1
ISO Speed: 100
Lens: EF-S 17-55mm f/2.8 IS USM
A low ISO was used to retain the detail

Brochure photography: Patrick Harrison with the EOS 1100D



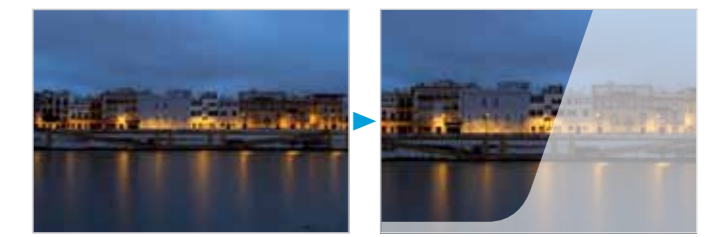
Image quality

Step up to DSLR image quality and shoot photographs that are rich in colour, low in noise and packed with crisp detail.

Large APS-C sized sensor

The EOS 1100D is equipped with an APS-C-sized CMOS sensor that has been conceived, designed and manufactured by Canon to one end: to deliver superb images and video. The camera's 12-megapixel images, measuring 4272x2848 pixels, are packed with fine detail, allowing them to be cropped in post production without loss of quality.

The relatively large size of the EOS 1100D sensor helps photographers control depth of field, shoot images in low light and record detail in bright highlights.



Original image

Image showing cropped layout



Cropped image without loss of quality



CMOS sensor technology

Canon controls each aspect of its CMOS sensor production ensuring every EOS camera uses a sensor that is specifically designed for the job in hand. Each photosite on the sensor's surface is equipped with an individual signal amplifier and microlens giving the EOS 1100D extraordinary performance in low light.

DIGIC 4 processor with 14-bit processing

At the heart of the EOS 1100D is Canon's DIGIC 4 processor. This chip controls all aspects of the camera's operation, including producing RAW and JPEG image files from the information recorded by the sensor at a rate of 3fps JPEG and 2fps RAW.

The use of 14-bit architecture throughout the EOS 1100D gives these image files exceptional tonal gradation and colour depth. The DIGIC 4 processor also helps to reduce noise in images shot in low light and at high ISO sensitivities.

Tv (Shutter Speed): 8.0
Av (Aperture Value): f/2.8
ISO Speed: 100
Lens: EF-S 17-55mm f/2.8 IS USM
A slow shutter speed was used to capture the ambient light and blur the water



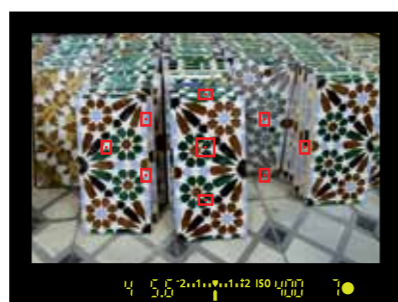
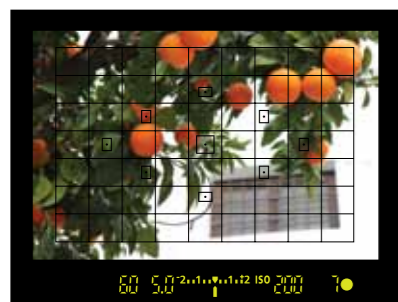
HD Video capture

Shoot great quality HD video at 1280x720 resolution, and 30 fps, with the same equipment that you use for still photography. Furthermore, the EOS 1100D large sensor makes it easier to explore new creative options such as shooting with very shallow depth of field, or in low light conditions.



Designed for high performance

Advanced metering and AF systems, working in combination with Canon's legendary DIGIC 4 processor, ensure the EOS 1100D delivers images you will be proud of, each and every time you use it.



63-zone iFCL exposure metering

Accurate exposure metering is essential for delivering images that are as true to life as possible. The EOS 1100D achieves this with state-of-the-art iFCL metering that splits up each scene into 63 segments, analysing each one in combination with colour and focusing data. This results in highly accurate exposure calculations, even under the most difficult of lighting conditions.



Wide-area, 9-point autofocus

Nine autofocus points, spread out across the frame in a diamond formation, enable accurate, swift autofocus no matter where your subject appears in the frame. Moving objects are tracked with AI Servo AF, and a central cross-type AF point provides even more accuracy, being sensitive to horizontal and vertical lines.



ISO 100-6400 sensitivity

Hand-held shooting even in low light is possible thanks to the EOS 1100Ds ISO 100-6400 range. Digital noise is well-controlled by the camera's DIGIC 4 processor and sensitive sensor design. Low-light shooting at high ISO settings lets a photographer capture the true ambience of a scene, and shoot discreetly where using on-camera flash is either not allowed or would be inappropriate.



Tv (Shutter Speed): 1/100
Av (Aperture Value): f/4.0
ISO Speed: 6400
Lens: EF 70-200mm f/4L USM
In low light, use high ISO to capture the moment

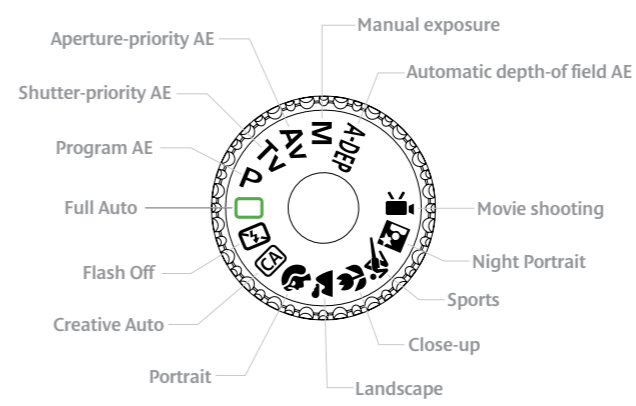


Tv (Shutter Speed): 1/500
 Av (Aperture Value): f/2.8
 ISO Speed: 400
 Lens: EF-S 17-55mm f/2.8 IS USM
 A fast shutter speed and wide aperture was used to capture the action and isolate the subject



Easy to use

Advanced technology beneath an elegant user interface makes the EOS 1100D simple and straightforward to use. Let nothing stand in the way of our photography.

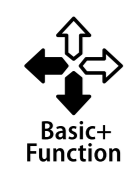


Subject-based Scene modes

Theme-based scene modes select a combination of aperture, shutter speed, ISO and focus mode that is appropriate for the subject being photographed. Choose from Portrait, Landscape, Close-up, Sports and Night Portrait, and let the EOS 1100D do the hard work for you.

Creative Auto – the best of both worlds

Graduate from fully automatic modes to the EOS 1100D's Creative Auto mode, which offers control over factors like depth of field via an intuitive interface.



Be creative with Basic +

The EOS 1100's Basic + technology allows photographers to stamp their own creativity on images captured with auto and Scene modes. One of nine ambience settings, or seven lighting types, can be applied via a simple, intuitive interface. Basic + allows the atmosphere of the occasion to be captured without compromising on ease of use.



Compact and lightweight

The EOS 1100D weighs just 495g and is small enough that you'll never want to leave it behind. Its ergonomic design means you'll never tire of shooting pictures and video, and its tough polycarbonate construction will never let you down.

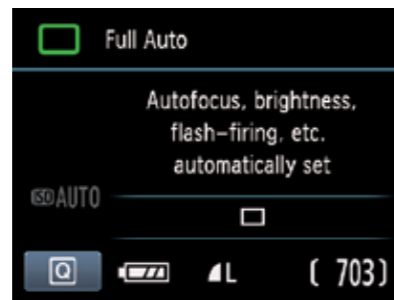


Easy to use

Intuitive handling, ergonomic design and an intelligent control layout make the EOS 1100D a DSLR you will want to take everywhere with you.

Quick control screen

Enhancing the EOS 1100D's intuitive handling, a quick control screen shows the status of all of the camera's major systems at glance. Accessed with a convenient dedicated control on the rear of the camera, the Quick Control screen also provides short-cuts to functions like focus mode, continuous shooting and Picture Style without having to access the camera's menu system.



Full Auto



A-DEP



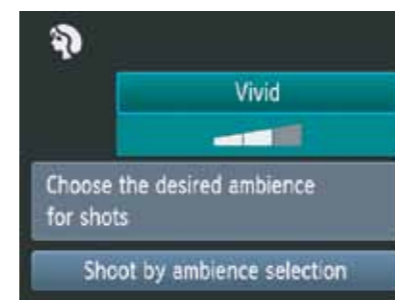
Picture Style



Protect image



Aperture Priority



Desired Ambience



Tv (Shutter Speed): 1/60
 Av (Aperture Value): f/5.0
 ISO Speed: 200
 Lens: EF-S 17-55mm f/2.8 IS USM
 The iFCL metering ensured that colours were captured true to life



Feature Guide

Feature Guide

Guiding users through the EOS 1100D's features is an on-screen Feature Guide, which is displayed automatically after each mode-dial and Quick Control Screen operation. Perfect for learning how the camera's systems function.

Your first steps into the world of EOS photography – a system of cameras, lenses and accessories trusted by professionals the world over.



Tv (Shutter Speed): 1/40
Av (Aperture Value): f/5.6
ISO Speed: 200
Lens: EF-S 17-55mm f/2.8 IS USM
Fill in flash was used to brighten the portrait

(With Flash)



(Without Flash)



Welcome to the EOS System

The EOS 1100D represents the ideal first step in world of EOS photography – a system of lenses, flashguns and accessories trusted the world over by amateur and professional photographers alike.

EF
Lenses

EF-S
Lenses

Canon EF lenses and Accessories
The EOS lens range comprises some 60+ models, ranging from specialist ultra wide-angle and telephoto optics to general purpose lenses for travel and family photography. State-of-the-art lens technology includes Image Stabilization, for hand-held photography in low light, and Ultrasonic lens motors for fast, near-silent focusing.

Canon Speedlite flashguns
When it comes to flash photography, the Canon Speedlite range of flashguns offers unparalleled access to creativity. Used on-camera, their high power gives them more range than an EOS built-in flash, while their specification includes features such as bounce flash, for softer portrait lighting.
It's also possible to use a Canon Speedlite flash off-camera, triggering it wirelessly with the optional Speedlite ST-E2 infrared transmitter. Lighting a subject in this way lets a photographer control exactly where light is coming from and where shadows are falling.

Some of the 60+ lenses in the EOS system

Landscape	Wildlife	Portrait	Macro	Flashes
EF-S 10-22mm f/3.5-4.5 USM	EF-S 55-250mm f/4-5.6 IS	EF 50mm f/1.4 USM	EF-S 60mm f/2.8 Macro USM	Speedlite 270EX II

For more information on EF and EF-S lenses, please visit: canon-europe.com/EFLenses, canon.co.uk/EFLenses, canon.ie/EFLenses

Processing and output

From digital capture to hard-copy output, only Canon offers a complete digital workflow, with a range of software and printers that compliments your EOS perfectly.

Canon can offer photographers a complete digital workflow solution, from capture through editing to output. Images captured on the EOS camera platform can be processed using Digital Photo Professional – a fully-featured application that accompanies every EOS camera and provides editing facilities for RAW and JPEG files.

EOS Software solutions

Photographers can also use software on the EOS Solutions disk to expand the functionality of their EOS 1100D. EOS Utility is an application that allows remote camera control and tethered shooting, where images are shot directly to a computer instead of a memory card. Users can even make their own Picture Styles with the included Picture Style editor software.



Digital Photo Professional



PIXMA MG5250

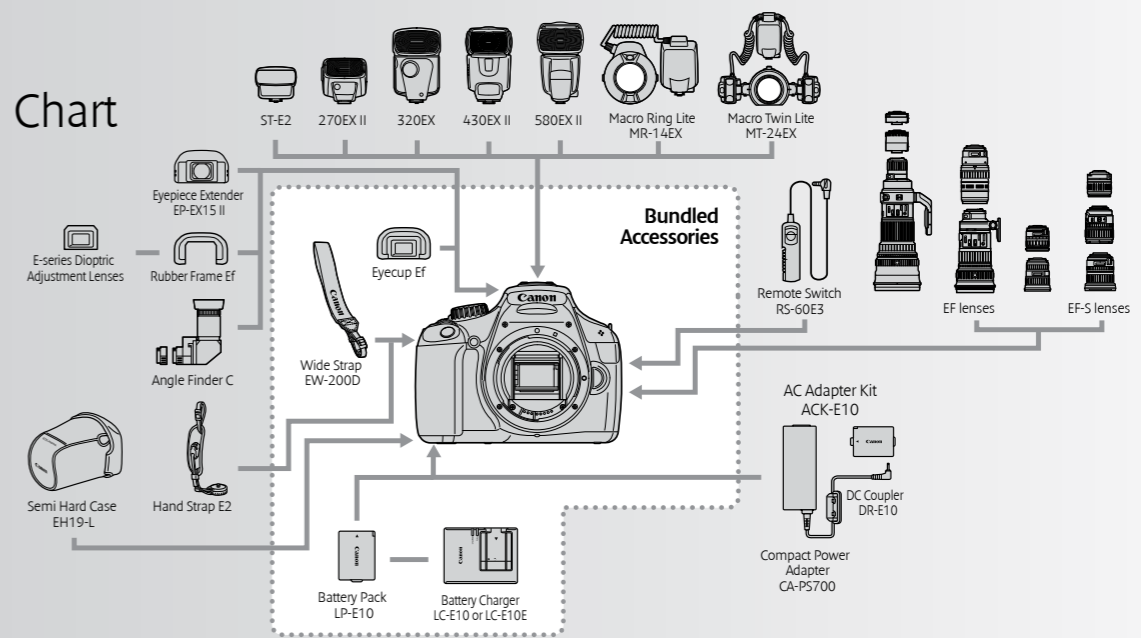


SELPHY CP800

Canon photographic printing

At the end of the photographic workflow, Canon's range of compact and stylish PIXMA inkjet printers allows photographers to make fine-art quality prints from the comfort of their own home. Canon SELPHY dye-sublimation printers offer the speed and affordability of a high-street mini-lab in a compact, easy to use form.

System Chart



Tv (Shutter Speed): 400
 Av (Aperture Value): f/8.0
 ISO Speed: 100
 Lens: EF-S 10-22mm f/3.5-4.5 USM
 A wide angle lens was used to achieve wider field of view

Specifications: EOS 1100D

IMAGE SENSOR	Type Effective Pixels Total Pixels Aspect Ratio Low-Pass Filter Sensor Cleaning Colour Filter Type	22.2 x 14.7mm CMOS Approx. 12.2M Approx. 12.6M 3:2 Built-in/Fixed with fluorine coating Manual cleaning and Dust Delete Data acquisition Primary Colour
IMAGE PROCESSOR	Type	DIGIC 4
LENS	Lens Mount Focal Length	EF/EF-S Equivalent to 1.6x the focal length of the lens
FOCUSING	Type AF System/ Points AF working range AF Modes AF Point Selection Selected AF point display Predictive AF ⁽⁷⁾ AF Lock AF Assist Beam Manual Focus AF Microadjustment	TTL-CT-SiR with a CMOS sensor 9 AF points (f/5.6 cross type at centre) EV 0 - 18 (at 23°C & ISO100) AI Focus, One Shot, AI Servo Automatic selection, Manual selection Superimposed in viewfinder and indicated on LCD monitor Yes up to 10m Locked when shutter button is pressed half way in One Shot AF mode. Intermittent firing of built-in flash or emitted by optional dedicated Speedlite Selected on lens, default in Live View Mode No
EXPOSURE CONTROL	Metering modes Metering Range AE Lock Exposure Compensation AEB ISO Sensitivity ⁽⁸⁾	TTL full aperture metering with 63-zone SPC (1) Evaluative metering (linked to all AF points) (2) Partial metering at center (approx. 10% of viewfinder) (3) Center weighted average metering EV 1-20 (at 23°C with 50mm f/1.4 lens ISO100) Auto: In 1-shot AF mode with evaluative metering exposure is locked when focus is achieved. Manual: By AE lock button in creative zone modes. +/-5 EV in 1/3 or 1/2 stop increments (can be combined with AEB). 3 shots +/- 2 EV, 1/2 or 1/3-stop increments AUTO(100-6400), 100-6400 (in 1-stop increments)
SHUTTER	Type Speed	Electronically-controlled focal-plane shutter, with electronic first curtain 30-1/4000 sec (1/2 or 1/3 stop increments), Bulb (Total shutter speed range, Available range varies by shooting mode)
WHITE BALANCE	Type Settings Custom White Balance WB Bracketing	Auto white balance with the imaging sensor AWB, Daylight, Shade, Cloudy, Tungsten, White Fluorescent light, Flash, Custom. White balance compensation: 1. Blue/Amber +/-9 2. Magenta/ Green +/-9. Yes, 1 setting can be registered +/-3 levels in single level increments 3 bracketed images per shutter release. Selectable Blue/Amber bias or Magenta/ Green bias.
VIEWFINDER	Type Coverage (Vertical/ Horizontal) Magnification Eyepoint Dioptre Correction Focusing Screen Mirror Viewfinder Information Depth of field preview Eyepiece shutter	Pentamirror Approx. 95% Approx. 0.80x ⁽⁴⁾ Approx. 21mm (from eyepiece lens center) 2.5 to +0.5 m-1 (dioptre) Fixed Quick-return half mirror (Transmission: reflection ratio of 40:60, no mirror cut-off with EF600mm f/4 or shorter) AF information: AF points, focus confirmation light Exposure information: Shutter speed, aperture value, ISO speed (always displayed), AE lock, exposure level/compensation, spot metering circle, exposure warning, AEB Flash information: Flash ready, high-speed sync, FE lock, flash exposure compensation, red-eye reduction light Image information: Highlight tone priority (D+), monochrome shooting, maximum burst (1 digit display), White balance correction, SD card information Yes, assigned to SET button with C.Fn-8-5 On strap
LCD MONITOR	Type Coverage Viewing Angle (horizontally/vertically) Brightness Adjustment Display Options	6.8cm (2.7") TFT, approx. 230k dots Approx. 100% Approx. 170° Adjustable to one of seven levels (1) Quick Control Screen (2) Camera settings

FLASH	Built-in Flash GN (ISO 100, meters) Built-in Flash Coverage Built-in Flash recycle time Red-Eye Reduction X-sync Flash Exposure Compensation Flash Exposure Bracketing Flash Exposure Lock Second Curtain Synchronisation HotShoe/ PC terminal External Flash Compatibility External Flash Control	9.2 up to 17mm focal length (35mm equivalent: 27mm) Approx. 2 seconds Auto, Manual Flash On/off Yes - red eye reduction lamp 1/200sec +/- 2EV in 1/2 or 1/3 increments Yes, with compatible External Flash Yes Yes Yes / - E-TTL II with EX series Speedlites, wireless multi-flash support via camera menu screen
SHOOTING	Modes Picture Styles Colour Space Image Processing Drive modes Continuous Shooting	Auto, Portrait, Landscape, Close-up, Sports, Night Portrait, No Flash, Creative Auto, Program AE, Shutter priority AE, Aperture priority AE, Manual, A-DEP Standard, Portrait, Landscape, Neutral, Faithful, Monochrome, User Defined (x3) sRGB and Adobe RGB Highlight Tone Priority Auto Lighting Optimizer (4 settings) Long exposure noise reduction High ISO speed noise reduction (4 settings) Auto Correction of Lens Peripheral Illumination Basic+ (Shoot by ambient selection, Shoot by lighting or scene type) Single, Continuous, Self timer (2s, 10s, 10s + continuous shots 2-10) Max. JPEG Approx. 3fps for approx. 930 images ⁽¹⁾ Max. RAW Approx. 2fps for up to approx. 5 images ⁽²⁾
LIVE VIEW MODE	Type Coverage Frame Rate Focusing Metering Display Options	Electronic viewfinder with image sensor Approx. 100% (horizontally and vertically) 30 fps Manual Focus (Magnify the image 5x or 10x at any point on screen) Autofocus: Quick mode, Live mode Real-time evaluative metering with image sensor Active metering time can be changed Grid overlay, Histogram
FILE TYPE	Still Image Type RAW+JPEG simultaneous recording Image Size Movie Type Movie Size Movie Length Folders File Numbering	JPEG: Fine, Normal (Exif 2.30 compliant) / Design rule for Camera File system (2.0), RAW: RAW (14bit, Canon original RAW 2nd edition), Digital Print Order Format [DPOF] Version 1.1 compliant Yes, RAW + Large JPEG JPEG: (L) 4272x2848, (M) 3088x2056, (S1) 2256x1504, (S2) 1920x1280, (S3) 720x480 RAW: 4272x2848 MOV (Video): H.264, Sound: Linear PCM) 1280 x 720 (29.97, 25 fps) Max duration 17min, Max file size 4GB New folders can be manually created and selected (1) Consecutive numbering (2) Auto reset (3) Manual reset
OTHER FEATURES	Custom Functions Metadata Tag Intelligent Orientation Sensor Playback zoom Display Formats Slide Show Histogram Highlight Alert Image Erase/Protection Menu Categories Menu Languages Firmware Update	10 Custom Functions with 32 settings User copyright information (can be set in camera) Image rating (0-5 stars) Yes 1.5x - 10x enabled in 15steps (1) Single image with information (2 levels) (2) Single image (3) 4 image index (4) 9 image index (5) Jump Display Autoplay: All images, repeat Brightness: Yes RGB: Yes Yes (Shooting information display only) Erase: Single image, Checkmarked images, Unprotected images Protection: Erase protection of one image at a time (1) Shooting menu (x4) (2) Playback menu (x2) (3) Setup menu (x3) (4) My Menu 25 Languages English, German, French, Dutch, Danish, Portuguese, Finnish, Italian, Norwegian, Swedish, Spanish, Greek, Russian, Polish, Czech, Hungarian, Romanian, Ukrainian, Turkish, Arabic, Thai, Simplified Chinese, Traditional Chinese, Korean and Japanese Update possible by the user.

INTERFACE	Computer Other	Hi-Speed USB (PAL/ NTSC) (integrated with USB terminal), HDMI mini output (HDMI-CEC compatible)
DIRECT PRINT	Canon Printers PictBridge	Canon SELPHY Printers, Bubble Jet Printers with the direct print function and PIXMA Printers supporting PictBridge Yes
STORAGE	Type	SD card, SDHC card or SDXC card
SUPPORTED OPERATING SYSTEM	PC & Macintosh	Windows XP inc SP3 / Vista inc SP1 and SP2 (excl. Starter Edition) / 7 (excl. Starter Edition) OS X v10.4-10.6
SOFTWARE	Browsing & Printing Image Processing Other	ZoomBrowser EX / ImageBrowser Digital Photo Professional PhotoStitch, EOS Utility (inc. Remote Capture), Picture Style Editor
POWER SOURCE	Batteries Battery life Battery Indicator Power saving Power Supply & Battery Chargers	1 x Rechargeable Li-Ion Battery LP-E10 Approx. 700 (at 23°C, AE 50%, FE 50%) ⁽⁵⁾ Approx. 650 (at 0°C, AE 50%, FE 50%) 4 levels Power turns off after 30sec or 1, 2, 4, 8 or 15mins AC Adapter Kit ACK-E10, Battery charger LC-E10, LC-E10E
PHYSICAL SPECIFICATIONS	Body Materials Operating Environment Dimensions (WxHxD) Weight (body only)	Stainless Steel and polycarbonate resin with conductive fiber 0 - 40 °C, 85% or less humidity 129.9 x 99.7 x 77.9 mm Approx. 495g (CIPA testing standard, including battery and memory card)
ACCESSORIES	Viewfinder Wireless File Transmitter Lenses Flash Battery Grip Remote Controller/ Switch Other	Eyecup Ef, E-series Dioptre Adjustment Lens with Rubber Frame Ef, Eyepiece Extender EP-EX15II, Angle Finder C Semi-Hard Case EH19-L Compatible with Eye-Fi cards All EF and EF-S lenses Canon Speedlites (220EX, 270EX, 270EX II, 320EX, 420EX, 430EX, 430EX II, 550EX, 580EX, 580EX II, Macro-Ring-Lite MR-14EX, Macro Twin Lite MT-24EX, Speedlite Transmitter ST-E2) None Remote Switch RS-60E3 Hand Strap E2
All data is based on Canon standard testing methods except where indicated. Subject to change without notice.		
<ol style="list-style-type: none"> Large/Fine(Quality 8) resolution Based on Canon's testing conditions, JPEG, ISO 100, Standard Picture Style. Varies depending on the subject, memory card brand and capacity, image recording quality, ISO speed, drive mode, Picture Style, Custom functions etc. Compatible with large memory card capacities, including cards of 2GB and more (camera may require firmware update). with 50mm lens at infinity, -1m-1 dpt Based on the CIPA Standard and using the batteries and memory card format supplied with the camera, except where indicated Memory card and battery door only with EF300mm f/2.8L IS USM at 50kph Recommended Exposure Index Environmental protection 		
Some images are simulated for clarity of reproduction. All company and/or product names are trademarks and/or registered trademarks or their respective manufacturers in their markets and/or countries.		
Front cover image: Puerta del Príncipe, Sevilla-España.		

Canon Inc.
canon.com

Canon Europe
canon-europe.com

English Edition 0150W444
© Canon Europa N.V., 2011

Canon UK Ltd
Woodhatch, Reigate
Surrey RH2 8BF
Telephone no 01737 220000
facsimile 01737 220022
canon.co.uk

Canon Ireland
Arena Road, Sandyford
Industrial Estate
Dublin 18, Ireland
Telephone No: 01 2052400
Facsimile No: 01 2958141
canon.ie

