



Insta-DE2a Series

Self-Adhesive Dry-Erase Front Projection Screen Film

User's Guide

Thank you for choosing the Insta-DE2a Series dry-erase whiteboard projection screen! Please read through this user guide before utilizing the screen. Correct usage and maintenance will ensure a long product life.

Precautionary Notes:

Before using the dry-erase function of your whiteboard screen, please make note of the following instructions to properly maintain and clean your dry-erase surface projection screen. (These Whiteboard cleaning tips are just as relevant with any dry-erase writing surface as they are with our Whiteboard-Projection Screens.)

1. Only use a high density foam eraser when removing dry-erase markings from the Whiteboard screen.
2. Do not use abrasive erasers as these may scratch the surface of the screen.
3. Never spray the whiteboard cleaner solution onto the surface while marker writing is present and then attempt to use a high density foam eraser to remove. This will only smear the dry-erase marker ink making the surface more difficult to clean and will likely ruin the foam eraser.
4. If there are any dry-erase markings left behind even after attempting to remove them using our high density erasers, spray our whiteboard cleaning solution directly onto the screen surface and use only a soft microfiber cloth to wipe-down and clean the area.

For a video demonstration, please visit: <http://www.elitescreens.com/whiteboardscreen-cleaning>

If replacement cleaning accessories are needed, please visit the Whiteboard cleaning accessories section of our website at <http://www.elitescreens.com/clean-whiteboard>

Product Features

- Anti-reflection surface reduces glare and hot-spot while using a projector.
- Special anti-scratch layer to ensure long use as a dry-erase/projection screen.
- 1.1 gain with 160 degree wide viewing angle.
- Award winning and GREENGUARD certified VersaWhite material.



Application Advantages

- Instantly converts flat surfaces/walls into a dry-erase whiteboard projection screen.
- Includes adhesive black velveteen border to enhance contrast and overall appearance.
- Perfect dry-erase and projection solution for today's short throw projectors
- Ideal and effective instructional presentation tool in the classroom, boardroom, and training facilities.

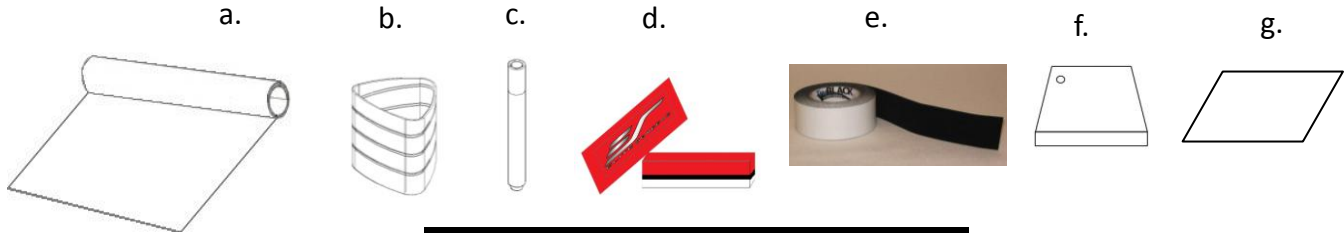
Product Specifications

Specifications:	
Color display	White
Thickness	2.1mm
Material composition	High molecular weight copolymer of Terephthalic acid ethyl esters
Weight	377g /m ²
Temperature	At room temperature
Gain	1.1
Viewing Angle	160°

What's in the package

Please make sure all parts listed below are included.

Notes: For best results and maximum product longevity, **ONLY** use a high density whiteboard Eraser.



Parts List	QTY
a. Insta-DE2a Screen Material Film Roll	1
b. Pen Holder (Self-stick cradle)	1
c. Whiteboard markers (pens)	2
d. High density eraser	2
e. Black velvet border adhesive strip roll	1
f. Scraper (smoothing tool)	1
g. Microfiber cloth	1

Tools required (not included)

Carpenter's Pencil	Measuring Tape	Sponge	Lint-free cloth	150 grit sandpaper	Sprayer
					

Preparation

The *Insta-DE 2a* product is to be solely installed on a flat surface. The dry erase function of this product requires a smooth writeable surface. Elite Screens is not responsible should these instructions are not properly followed. Any surfaces that are textured (ex. orange peel, drilled holes, glue/tape residue, dents, etc.) should be patched, sanded, and primed before applying the *Insta-DE2a* screen.

The warranty of this product will be voided if any bubbling occurs due to the use of an after-market spray adhesive or if the screen was applied on to a textured wall.

Commercial use recommendation

If you would like your screen to have a professional-grade finish that is flat, durable, and free from imperfections – Elite Screens strongly recommends hiring a professional wallpaper installer.

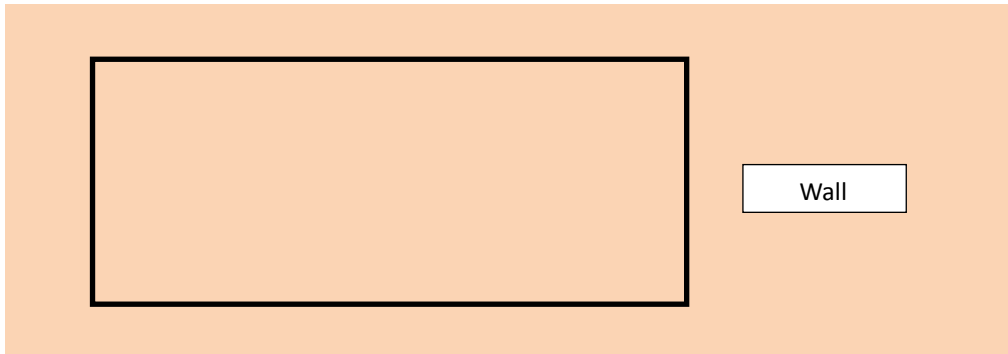
Installation

We strongly recommend two or more people for this installation.

1. Wall preparation:

- a) Smooth the entire surface of the wall with sandpaper.
- b) Clean the entire surface with a wet sponge or a lint-free towel to remove any dust left from sanding the wall.

2. Measure and draw a line around the screen installation area.



3. Moisturize the screen installation area:

- a) Dilute any kind of surfactants (ex, soap) into a 1:10 (water) ratio.
- b) Spray the mixture on the screen installation area evenly with a sprayer.



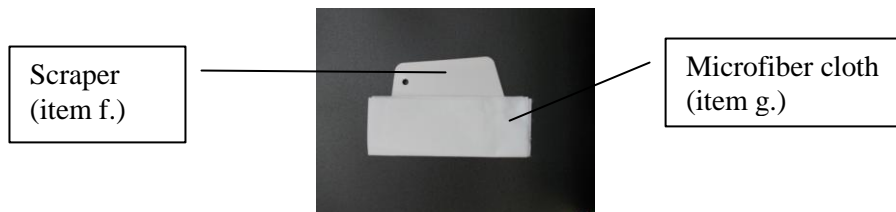
- c) Make sure the entire area where the *Insta-DE2a* will be installed is completely wet.
- Note: The adhesive may not stick appropriately if the installation area is not wet sufficiently.

4. Procedures for attaching the material:

- a) Carefully place and align the *Insta-DE2a* on the right-hand side of the installation area. Once it has been placed, peel off 1-2 inches of the back film to expose the adhesive.
- b) Spray the adhesive area to allow the *Insta-DE2a* the ability to move within the wet installation area.
- c) Press the *Insta-DE2a* down with both hands to firmly position it in place.
- d) As one person holds the *Insta-DE2a* in place, the other person peels off the backing from right to left.
- e) Spray the exposed adhesive back of the *Insta-DE2a* and continue until the entire area is wet.
- f) The *Insta-DE2a* material at this point can be easily moved and adjusted within the installation area if needed.

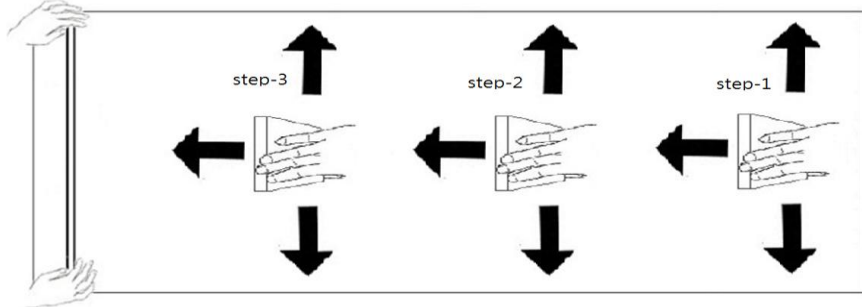
5. Smoothing, scrapping out air bubbles and water:

Caution: The scraper's edge is sharp. Carefully scrape the screen when removing air bubbles to avoid scratching the surface. Please use the **microfiber cloth** (G) to cover the **scraper** (F) and flatten the surface in a 45 degrees angle to avoid scratching the surface of the screen.



- a) Start from the Right-Middle area of the *Insta-DE2a*. Scrape up/down/left to remove the air bubbles/water and dry any water excess with a lint-free cloth.

- Note 1:** Dust or other matter may reside within the Insta-DE2a and the wall. To remove such debris, simply peel back the *Insta-DE2a* from the wall and clean it with the mixture described in step 3-a.
- b) Make sure the *Insta-DE2a* adheres properly to the wall after cleaning before proceeding.
- c) Continue scraping as needed in an up/down/left direction as shown in the picture below, Step-2, Step-3.
- Note 2:** Occasionally, water may come back in the areas that were just scrapped out. To avoid this from happening, please make sure to dry any excess water immediately with a clean sponge or lint-free cloth as soon as water is squeezed out.



6. Final Inspection:

Flash a light source directly on the surface of the *Insta-DE2a* to help inspect for air bubbles or dust.

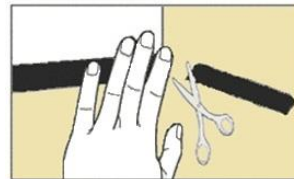
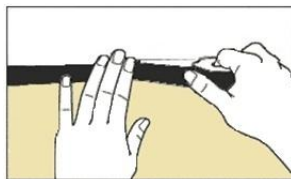
Note: The *Insta-DE2a* should not come off at this stage. If air bubbles are present, the only way to remove them is to use a scraper to squeeze them out.

7. Adhesion curing time:

- In order to allow the *Insta-DE2a* and wall to properly bond, please refrain from touching the Insta-DE2a for a period of 1-2 days after the installation has been completed.
- It is normal for the surface of *Insta-DE2a* to have slight wavy edges. These will go away and flatten after 1-2 days.

Adhesive black velvet border installation

- Measure the top/bottom and left/right sides of the Insta-DE2 screen to obtain the required length of the velvet border you will need to use for bordering your screen.
- Peel a small portion off of the velvet border and place it about half an inch over the white area of the screen. Continue to peel off and roll out the remainder of the velvet border until you have reached the end and cut the edge.



Note: For best results we recommend cutting the edge in a 45° angle.

- Repeat the process for the remainder of the sides until all sides are bordered as shown below.



4. Use only the included erasers to remove and erase dry-erase markings. For a deep clean, we recommend using a non-alcohol based dry-erase board cleaner with a soft microfiber cloth.

Elite offers a replacement kit (**part number ZER3**) which includes:

- 1 x bottle of 8.45 oz cleaning solution
- 1 x microfiber cloth
- 2 x high density foam erasers
- 2 x sets of dry-erase markers (4 total)



Contact your reseller or visit shop.elitescreens.com for pricing and purchase.

Safety Precautions:

1. Avoid using sharp objects directly on the screen which can result in permanently damaging the product and voiding your warranty.
2. Creases or wrinkles caused by improper installation are not removable.

Please be advised:



The above picture is the result of an improper installation. Two main factors that contribute to this should be avoided per the tips below.

1. The surface to which you are installing this material to should be perfectly smooth. If in case the surface is uneven, it is recommended to place a smooth board over the desired space of the install first. This will eliminate any bubbling of the material over time.
2. Make sure the water and surfactant (soap) are properly mixed. You can dilute the mixture by adding warm water.

For more information, technical support or your local Elite Screens contact, please visit www.elitescreens.com