

**InFocus**  
Collaboration That Works



**BIG TOUCH**

The giant all-in-one touch PC that  
makes Windows 8 come alive

# BIG TOUCH

**InFocus**  
Collaboration That Works

## The all-in-one touch PC that demands an audience.

Windows 8 combines the fun of a tablet with the productivity of a PC, and the InFocus BigTouch amplifies that beautiful, fast and fluid touch experience for your classroom or other shared work space.

- Windows 8.1 Pro experience on a 55-, 70- or 80-inch 1080p touch display
- Engage audiences and encourage interaction in classrooms, offices, trade shows, lobbies and more
- Run all your Windows apps, even the older ones, in touch mode
- Highly customizable for your needs and your PC applications
- Intel Core processor and fast solid state hard drive
- Wireless mouse and keyboard included



**INF55WIN8**

55"  
CCFL LCD  
Windows 8.1 Pro

**INF7011**

70"  
LED edge-lit LCD  
Windows 8.1 Pro

**INF8011**

80"  
LED edge-lit LCD  
Windows 8.1 Pro

## Maximize Windows 8 Touch Capabilities

Windows 8 was built for touch and online connectivity and now you can have it on a large scale in the InFocus BigTouch.

- 5-point touch display with intuitive Windows 8 gestures to interact with your content
- Personalize the Start screen with tiles that connect to a person, app, website, folder or whatever else is important to you
- Familiar Windows desktop that you've used before
- Use your apps, get more apps in the Windows Store, and arrange them all the way you want
- Multi-task by snapping two apps side-by-side
- Enhanced features to easily connect to your networks, access files in the cloud, encrypt data, and more

## The Tablet Experience...Magnified

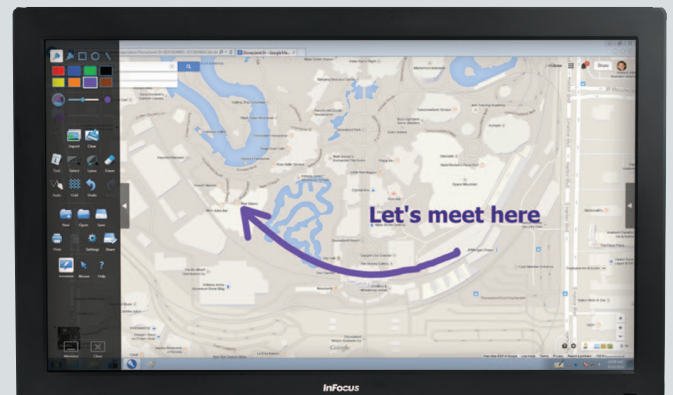
Tablets are fun. Touch is intuitive. The InFocus BigTouch employs a beautiful 55-, 70- or 80-inch display that allows that enjoyable experience, and your content, to be seen and shared.

- Brilliant full HD (1920 x 1080) display shows off your content with incredible brightness, color and clarity
- Multi-touch screen uses four sensors to deliver exceptionally accurate touches, swipes and gestures
- Windows 8 gestures such as tap, slide, swipe, pinch, and rotate can be used to get a global view of everything on the screen and slide back and forth to find what you're looking for
- Wireless keyboard and mouse also included to easily control the display from your seat

## Whiteboard Like a Pro

Add our optional BigNote whiteboarding app to turn your BigTouch into the best digital whiteboard available.

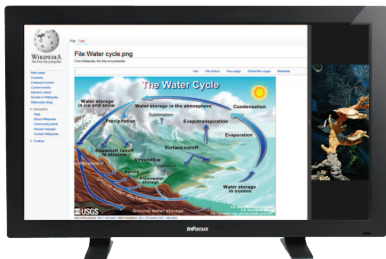
- Wide assortment of pens, colors and shapes
- Whiteboard on up to 10 square feet of space
- Annotate on screen and save the changes
- BigNote files are cross-compatible with Mondopad's whiteboard app



## How Would You Use Your BigTouch?

The form factor of BigTouch combined with the user experience and flexibility of Windows 8 means its use is only limited by your imagination.

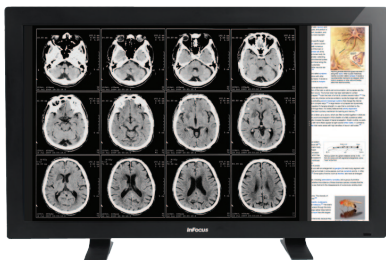
### EDUCATION



Higher education and primary and secondary schools (K-12) can benefit from BigTouch in administrative offices or in the classroom. Its bright, engaging display keeps students' attention and Windows 8 is intuitive and familiar for students, staff and IT.

- In classrooms for giving and preparing lessons
- Access and display content from the web and the cloud
- In administrative offices as a shared PC
- Flexible and secure for IT to manage

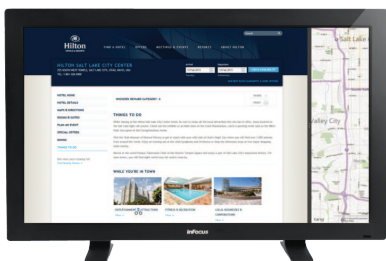
### MEDICAL



The high definition 1080p display and ease of use of BigTouch make it a great fit for hospitals, clinics, labs, and administrative offices.

- In waiting rooms for education and/or self service
- For accessing and analyzing information, such as imaging
- For patient education, such as explaining imaging, video, and other patient care info
- At nursing stations as a shared PC

### HOSPITALITY



Hotel lobbies can greatly benefit from BigTouch to help their guests help themselves.

- Learn about the hotel's amenities
- Browse maps of the hotel and of the surrounding area
- View hotel restaurant menus and make reservations
- Find fun things to do at the hotel and in the area

## BigTouch and Mondopad

Mondopad is revolutionizing how people communicate and work together. Think of Mondopad as a fully integrated BigTouch that includes the Microsoft Office Suite and Mondopad apps that take collaboration to a whole new level.

A camera with microphones optimized for the conference room and speaker bar designed for video conferencing applications are also included with Mondopad.

### Video Conferencing

Mondopad's easy-to-use video conferencing capabilities bring people together instantly.

- Business-class quality with nearly any video conferencing platform, including Polycom, Tandberg, and Skype
- Share screens and annotations in real time
- Communicate face-to-face with anyone in an instant
- Save time and money on travel

### Whiteboard and Annotation

Use Mondopad for collaborative whiteboard sessions and to take notes on documents and share them with people in the room or around the world.

- A complete set of writing and drawing tools at your command
- Annotate on PPT slides, spreadsheets, design comps, web pages and more
- Save and share the notes with meeting participants from the Mondopad

### Easily Upgrade to Full Mondopad Functionality

Mondopad and BigTouch are complementary products that address different requirements and specific applications. Plus, BigTouch is easy to upgrade to bring it to full Mondopad capability.

### Why Mondopad?

- For businesses that require an integrated collaboration platform that enables video conferencing, digital whiteboard, viewing and sharing MS Office files, annotation, and more
- Also great for running any Windows application on a large touch format

### Why BigTouch?

- For those who want to showcase interactive content on a large touch screen
- Classrooms, conference rooms, lobbies, kiosks, trade shows and more
- Runs all Windows applications including Windows 8 and legacy apps
- Easy to upgrade to Mondopad

# Specifications\*

## PC

### INF55WIN8

### INF7011

### INF8011

Processor	Intel® Core i5-2520m, Q67 chipset	Intel® Core i7-4770T, Q87 chipset	
Memory	4 GB of RAM	8 GB of RAM	
Hard Drive	SSD 120GB		
LAN (2x)	802.3 10/100/1000 Base-T with Wake on LAN		
Wi-Fi	Dual band 802.11 a/b/g/n MIMO PCIe half mini card, 2.4 GHz with Intel, AMT support		
Input Connections	USB Type-A x 6 (4 on side of the display, 2 on PC), Ethernet (RJ45 x 2)	USB Type-A x 7 (4 on side of display, 1 on top of display, 2 on PC), Ethernet (RJ45 x 2)	USB Type-A x 6 (3 on side of display, 1 on top of display, 2 on PC), Ethernet (RJ45 x 2)
Output Connections	Optional USB 2.0 to HDMI adapter (for display out)	HDMI out	
Bluetooth	N/A	4.0	
Operating System	Windows 8.1 Pro		

## Display

Size	55" diagonal	70" diagonal	80" diagonal
Resolution	1920 x 1080		
Refresh Rate	60 Hz	120 Hz	
Viewing Angle	±188°	±176°	
Technology	CCFL LCD	LED edge-lit LCD	
Pixel Pitch	0.63mm		
Picture-in-Picture	SBS/4 quadrant PiP	N/A	
Video Input Compatibility	Full NTSC, 480i, 480p, 720p, 1080i, 1080p		
Data Input Compatibility	VGA (640x480), SVGA (800x600), XGA (1024x768), SXGA (1280x1024), SXGA+ (1400x1050), UXGA (1600x1200), WXGA+ (1440x900), WSXGA+ (1680x1050), WXGA (1280x800), WUXGA (1920x1200)		
Input Connections	HDMI x 2, VGA (HD15 VESA), Component, S-Video, Composite, RS232, RCA stereo audio x 2, 3.5 mm stereo mini-jack, USB Type-B to touch screen controller board	HDMI x 2, VGA (HD15 VESA), RS232, 3.5mm stereo mini-jack, RCA stereo audio in, 3.5mm stereo audio in, USB Type-B to touch screen controller board	
Output Connections	RCA audio stereo (L/R) output	RCA audio stereo (L/R) output, 3.5mm stereo mini jack	
Touch Screen	Edge-to-edge quad camera multi-touch system with support for 5 point Windows 8 gestures. Glass protection overlay for LCD surface. USB connection to PC from touch system panel board		
Speakers (Integrated)	Stereo 7W x 2		
Power	AC 100 to 240V, 50/60Hz		
Mount	VESA standard 400 x 400mm M6 screws		

## System

Accessories Included	Wireless keyboard (where allowed), wireless mouse (where allowed), cleaning cloth, VGA cable, USB cable, security screws with removal tool, power cord, remote control, quick setup guide, feet/table stand assembly (feet not included with INF7011 or INF8011)		
Warranty	1 Year		
Product Weight	122.4 lbs / 55.5 kg	155 lbs / 70.3 kg	175 lbs / 79.4 kg
Product Dimensions	53 x 5.5 x 32.3 in / 134.6 x 14 x 82 cm	65.7 x 4 x 39 in / 1669 x 102 x 991 mm	74.8 x 4 x 46.3 in / 1900 x 101 x 1176 mm
Shipping Weight	135 lbs / 61.2 kg	171 lbs / 77.6 kg	202 lbs / 91.6 kg
Shipping Dimensions	58.7 x 13.9 x 38.4 in / 149 x 35.2 x 97.5 cm	73 x 10.5 x 49 in / 1854 x 267 x 1245 mm	83.5 x 10.5 x 53.5 in / 2121 x 267 x 1359 mm
Operating Conditions	41 to 95°F at 0 to 10K ft / 5 to 35°C at 0 to 3,048 m		
Noise	<40dBA @ 77°F / 25°C		
Energy Star	5.1 for display and PC		
Approvals (INF55WIN8 only. Check infocus.com for current INF7011 and INF8011 approvals)	United States (FCC, UL), Europe (CE), Australia (RCM), Brazil (ANATEL), Canada (IC, FCC, cUL), Chile (SUBTEL), China (CCC, CMIIT), Columbia, Costa Rica, India (WPC), Indonesia (PLG), Malaysia (SIRM), Mexico (NOM, SCT, Energy Consumption label), New Zealand (C-tick), Panama, Peru (MTC), Puerto Rico (FCC, UL), Saudi Arabia (SASO, CITC), Singapore (PSB, IDA), Taiwan (BMSI, NCC), United Arab Emirates (TRA)		

## Accessories

BigNote Whiteboard Software (INS-BIGNOTE)  
 Mondopad Upgrade Kit (INSMPWIN8SW)  
 RealCam Pan/Tilt/Zoom Camera (INF-SPTZ-2)  
 Camera with Microphone Array (HW-CAMERA-2)  
 Soundbars (HW-SOUNDBAR-4)  
 Wall Mount (INF-WALLMNT2, INF-WALLMNT3)  
 Floor Stand for INF55WIN8 only (INF-FLRSTND)

Mobile Carts (INF-MOBCART, INF-MOBCARTPRO-B, INF-MOBCARTPRO-S, INF-MCART-PL)  
 USB to HDMI Adapter (HW-USB2HDMI)  
 Extended warranties  
 55-inch (EPWPRE55BT1, EPWPRE55BT2)  
 70-inch (EPWPRE70BT1, EPWPRE70BT2)  
 80-inch (EPWPRE80BT1, EPWPRE80BT2)

**InFocus**  
 Collaboration That Works

\* Product specifications, terms, and offerings are subject to change at any time without notice.