

TomTom Reference Guide

Contents

What's in the box	7
What's in the box	7
Read me first	8
Positioning the device	8
Installing in your car	8
Switching on and off	9
Setting up.....	9
GPS reception.....	9
Micro-SD card slot.....	9
About MyTomTom	9
Setting up MyTomTom	10
Safety settings	10
Device not starting	11
Charging your device	11
Safety Notice	11
Take care of your navigation device	11
Getting help to use your navigation device	11
Planning a route	12
Planning a route.....	12
Route summary	14
Alternative routes	15
Selecting a route type	16
Frequent destinations.....	17
Show my frequent destinations.....	17
Using arrival times.....	17
Navigation menu options.....	18
Planning a route in advance	20
Viewing route information	21
Voice control	22
Voice control - Navigate to	23
About voice control.....	23
Using voice control	23
Planning a journey using your voice	24
Voice control - Drive to	27
About voice control.....	27
Using voice control	27
Planning a journey using your voice	28
Entering addresses using your voice	30

The Driving View	31
About the Driving View	31
The Driving View	31
Driving View Symbols.....	32
About replanning settings.....	32
Advanced Lane Guidance	34
About lane guidance	34
Using lane guidance.....	34
Changing your route	36
Making changes to your route.....	36
Change route menu.....	36
About waypoints	37
Adding the first waypoint to your route	38
Adding further waypoints to your route	38
Changing the order of waypoints	39
Deleting a waypoint.....	39
Changing notification settings for a waypoint	39
Reactivating a waypoint	40
View map	41
About viewing the map.....	41
View map	41
Options.....	42
Cursor menu	43
Map corrections	45
About Map Share	45
Correcting a map error.....	45
Types of map correction	45
Sounds and voices	49
About sounds and voices	49
About computer voices.....	49
Selecting a voice	49
Changing the volume level	49
Automatic volume control	50
Settings	51
About Settings.....	51
2D/3D settings	51
Advanced settings.....	51
Battery saving	52

Brightness	53
Car symbol.....	53
Clock.....	53
Connections.....	53
Enable / Disable Bluetooth.....	53
Enable / Disable flight mode	54
Favourites	54
GPS status.....	55
Home location	55
Keyboard.....	55
Language	56
Make your own menu	56
Manage POIs.....	56
Map colours	57
Map corrections.....	57
Me and my device	57
MyTomTom account.....	57
Operate left-handed / Operate right handed.....	58
Phones	58
Reset factory settings.....	58
Route planning	58
Safety settings	59
Show POI on map	59
Speaker	60
Start up	60
Status bar.....	60
Switch map.....	60
Turn off voice guidance / Turn on voice guidance	61
Units	61
Use night colours / Use day colours	61
Vehicle and routes.....	62
Voices.....	62
Voice control.....	63
Volume.....	63

Points of Interest **64**

About Points of Interest	64
Creating POIs.....	64
Using POIs to plan a route	66
Showing POIs on the map	67
Calling a POI.....	67
Setting warnings for POIs	67
Manage POIs.....	68

Help **69**

About getting help.....	69
Using Help to phone a local service.....	69
Help menu options	69

Hands-free calling **71**

About hands-free calls	71
Connecting to your phone	71
Making a call	71
Receiving a call	72
Auto-answer	72
Connecting more phones to your device.....	72
Mobile phone menu	72

Favourites **74**

About Favourites	74
Creating a Favourite	74
Using a Favourite.....	76
Changing the name of a Favourite	76
Deleting a Favourite	76

Traffic **77**

About RDS-TMC	77
Safety Notice	77
Using traffic information	77
Taking the fastest route.....	78
Minimising delays.....	78
Making commuting to work easier	79
Getting more information about an incident.....	80
Checking traffic incidents in your area	81
Changing traffic settings	82
Traffic incidents	82
Traffic menu.....	83

Speed cameras **85**

About Speed Cameras	85
Speed camera warnings	85
Changing the way you are warned.....	85
Speed camera symbols.....	86
Report button.....	88
Reporting a new speed camera while on the move	88
Reporting a new speed camera while at home	88
Reporting incorrect camera alerts	89
Types of fixed speed camera you can report	89
Average speed check camera warnings	89
Speed Cameras menu.....	90

TomTom camper and caravan products **92**

About TomTom camper and caravan products	92
Vehicle types	92
Set up your vehicle	93
Selecting a camper and caravan map	94

Selecting your vehicle type.....	94
Show the vehicle type quick menu button	95
MyTomTom	96
<hr/>	
About MyTomTom.....	96
Setting up MyTomTom	96
MyTomTom account.....	97
Addendum and Copyright	98
<hr/>	
Copyright notices	101
<hr/>	

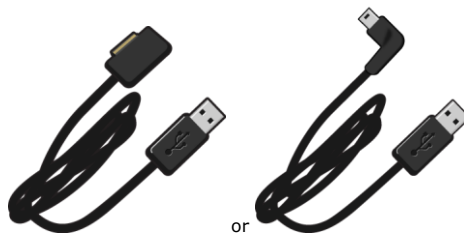
What's in the box

What's in the box

- TomTom navigation device with removable or integrated mount



- USB cable



- USB car charger



- Dashboard mount disks. Disks are included in some products and are available as accessories for others. For more information, go to tomtom.com/accessories.



- Installation poster

Read me first

Positioning the device

Consider carefully where to install your TomTom navigation device in your car. The navigation device should not block or interfere with any of the following:

- Your view of the road
- Any of the controls in your car
- Any of your mirrors
- Any airbags

When your navigation device is installed, you should be able to reach the device easily without leaning or stretching. You can attach the device to the windscreen or you can use a Dashboard Mount Disk to attach the mount to your dashboard. Dashboard Mount Disks are included with some products and are available as accessories. The following diagrams show where you can safely attach the mount.



TomTom also offers alternative mounting solutions for your TomTom navigation device. For more information about Dashboard Mount Disks and alternative mounting solutions, go to tomtom.com/accessories.

Installing in your car

Use the mount provided with your device to install your TomTom device in your vehicle. You can attach your device to your windscreen or use a Dashboard Mount Disk to attach your device to your dashboard. See the printed installation instructions included with your product for more information. Read the instructions about [positioning your device](#) before you install your device.

To install your device, do the following:

1. Choose the best location to mount your TomTom device. The location should be as smooth as possible.
2. If you are using the Dashboard Mounting Disk, clean the dashboard and install the disk.
3. Make sure that both the suction cup on the mount and your windscreen or disk are clean and dry.
4. Press the suction cup of the mount firmly against your windscreen or disk.
5. Turn the rubber grip near the base of the mount in a clockwise direction until you feel it lock.

6. If your mount is not integrated into your device, place your device in the mount, making sure that it clicks into place.
7. Plug the USB car charger into the power supply on your dashboard.
8. Connect the USB cable to the car charger and your TomTom device.

Your navigation device is now installed. The next step is to switch it on and answer a few questions.

Switching on and off

To switch on your navigation device, press and hold the On/Off button until you see the start-up screen. The first time you switch on your device, you have to hold the button down for up to 15 seconds.

Setting up

Important: Take care to select the correct language as the language you choose will be used for all text on the screen.

When you first switch on your device, you have to answer a few questions to set up the device. Answer the questions by tapping the screen.

GPS reception

When you first start your TomTom navigation device, the device may need a few minutes to determine your GPS position and show your current position on the map. In future, your position will be found much faster, usually within a few seconds.

To ensure good GPS reception, you should use your device outdoors and keep your device upright. Large objects such as tall buildings can sometimes interfere with reception. GPS reception can also be affected if the device is placed flat on a surface or held flat in your hand.

Micro-SD card slot

Some types of TomTom navigation devices have a micro-SD card slot that is located on the side or on the bottom of the device.

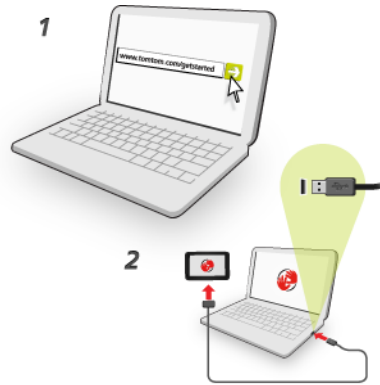
Before you use the memory card slot, make sure that you have the latest version of the application installed on your navigation device by connecting to [MyTomTom](https://mytomtom.com). When your device is up-to-date, you can use a memory card as extra storage space to add extra maps to your device. Maps can be purchased from tomtom.com.

About MyTomTom

MyTomTom helps you manage the contents and services of your TomTom navigation device, as well as giving you access to the TomTom community. You log in to MyTomTom on the TomTom website. It is a good idea to frequently connect your navigation device to MyTomTom to ensure you always have the latest updates.

Tip: We recommend using a broadband internet connection whenever you connect your navigation device to MyTomTom.

Setting up MyTomTom



To set up MyTomTom, do the following:

1. Connect your computer to the internet.
2. Start a browser and go to tomtom.com/getstarted.
3. Click **Download now**.

Your browser downloads the MyTomTom support application, which you need to install on your computer in order to connect your device to MyTomTom. Follow the instructions on the screen if you are asked questions while downloading.

4. When prompted, connect your device to your computer using the USB cable. Then switch your device on.

Important: You should plug the USB cable directly into a USB port on your computer and not into a USB hub or USB port on a keyboard or monitor.

Once the MyTomTom support application is installed, you can access MyTomTom from the notification area on your desktop.



Tip: When you connect your navigation device to your computer, MyTomTom tells you if there are any updates for your device.

Safety settings

We recommend using the safety settings to make your driving as safe as possible.

These are some of the options included in the safety settings:

- Show essential menu buttons while driving
- Show safety reminders
- Warn when driving faster than allowed

If your device supports voice control, you can also drive more safely by using voice control to control your navigation device.

Device not starting

In rare cases, your TomTom navigation device may not start correctly or may stop responding to your taps.

First, check that the battery is charged. To charge the battery, connect your device to the car charger. It can take up to 2 hours to fully charge the battery.

If this does not solve the problem, you can reset the device. To do this, press and hold the On/Off button until your device begins to restart.

Charging your device

The battery in your TomTom navigation device charges when you connect it to the car charger or to your computer.

Important: You should plug the USB connector directly into a USB port on your computer and not into a USB hub or USB port on a keyboard or monitor.

Safety Notice

Some navigation devices contain a GSM/GPRS module which can interfere with electrical devices such as cardiac pacemakers, hearing aids and aviation equipment.

Interference with these devices may endanger the health or life of you or others.

If your device includes a GSM/GPRS module, do not use it near unprotected electrical units or in areas where the use of mobile telephones is prohibited, such as hospitals and aircraft.

Take care of your navigation device

It is important to take care of your device:

- Do not open the casing of your device under any circumstances. Doing so may be dangerous and will invalidate the warranty.
- Wipe or dry the screen of your device using a soft cloth. Do not use any liquid cleaners.

Getting help to use your navigation device

You can get further help by going to tomtom.com/support.

For warranty information, go to tomtom.com/legal.

Planning a route

Planning a route

Important: In the interest of safety and to reduce distractions while you are driving, you should always plan a route before you start driving.

Important: If you are using a TomTom camper and caravan product, before planning a route you should [set up your device for your vehicle](#).

To plan a route on your TomTom device, do the following:

1. Tap the screen to open the Main Menu.



2. Tap **Navigate to** or **Drive to**.

3. Tap **Address**.

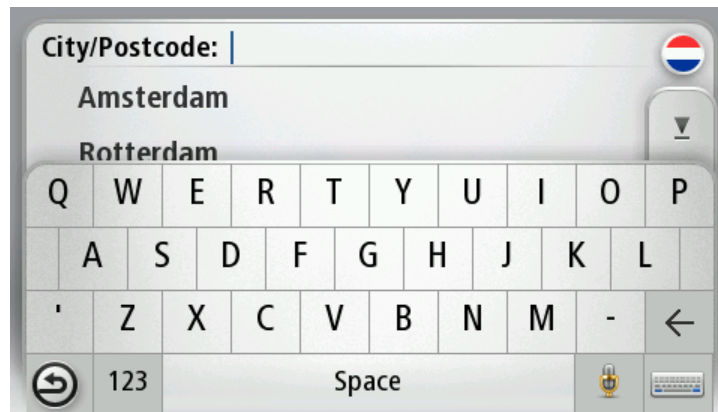
You can change the country or state setting by tapping the flag before you select a city.

4. Enter the town or city name, or the postcode.

Tip: If your device supports voice control, instead of typing the address, tap the microphone button to enter the address by speaking to your TomTom device.

Towns with similar names are shown in the list while you type.

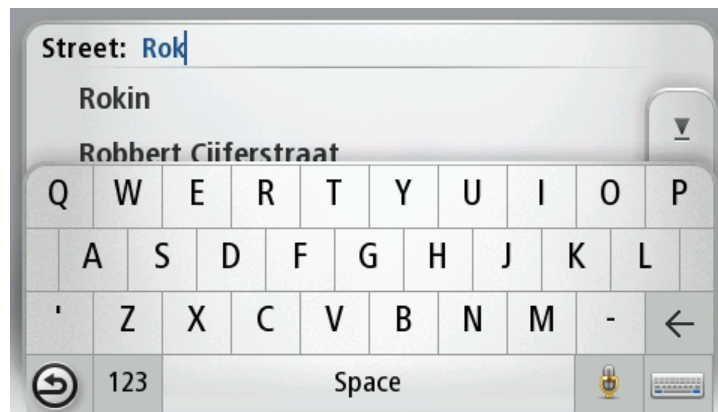
When the correct city or town appears in the list, tap the name to select the destination.



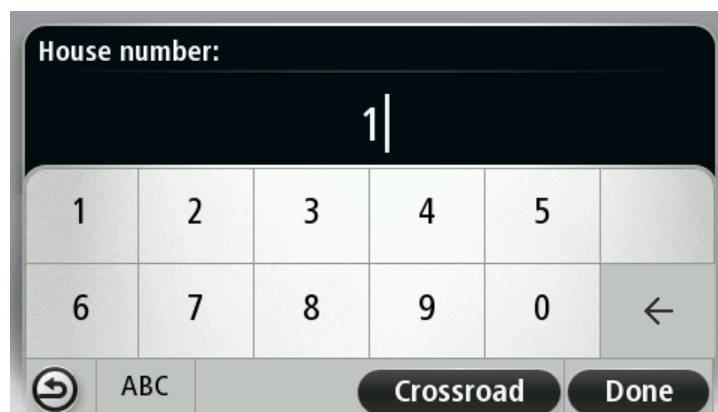
5. Enter the street name.

Streets with similar names are shown in the list while you type.

When the correct street name appears in the list, tap the name to select the destination.



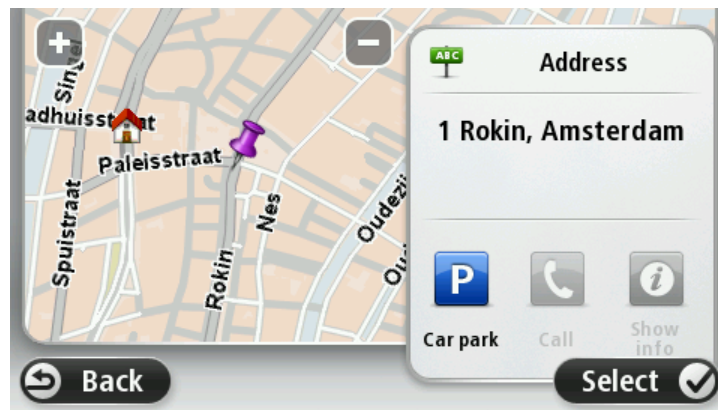
6. Enter the house number, then tap **Done**.



7. The location is shown on the map. Tap **Select** to continue or tap **Back** to enter another address.

Important: If you are planning a caravan or camper route and no specific route can be found, you are asked if you want to use a car route instead. If you use a car route pay special attention to any route restrictions while driving.

Tip: If you want your final destination to be a car park, tap **Car park** and select a location from the list of car parks close to your general destination.



8. When the new route is shown, tap **Done**.

For more information about the route, tap **Details**.

To change your route, for example, to travel via a particular location or to select a new destination, tap **Change route**.



Your device starts to guide you to your destination, using spoken instructions and on-screen directions.

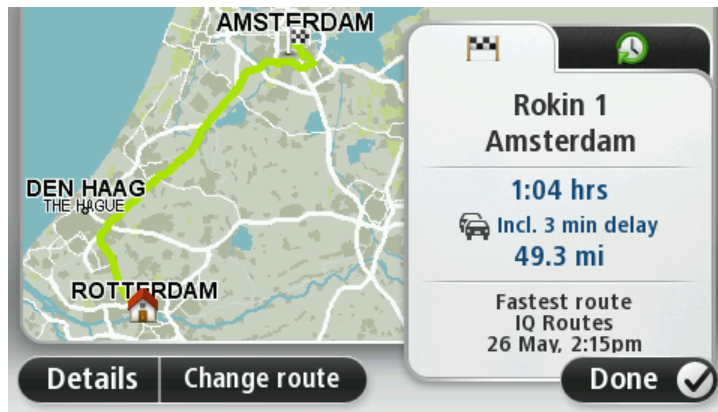
Route summary

The route summary shows an overview of your route, the remaining distance to your destination and the remaining estimated journey time.

To view the route summary, tap the right-hand panel on the status bar in the Driving view or tap **View route** in the Main Menu and then tap **Show route summary**.

If you have HD Traffic or an RDS-TMC receiver, the route summary also shows traffic information about delays on your route.

Note: To use a TomTom traffic information service, you may need a subscription or a receiver. Traffic services are not supported in all countries or regions. For more information, visit tomtom.com/services.



Alternative routes

Note: This feature is not available on all TomTom navigation devices.

Your TomTom device helps you reach your destination as quickly as possible by showing you a faster alternative route when one is available.



To take the alternative route, tap the balloon at the top of the screen. If you don't want to follow the alternative route, keep driving to continue to receive instructions for your original route.

Tip: The alternative route disappears when it is no longer faster than your original route or it is too late for you to choose it.

To change how you are asked about alternative routes, tap **Settings** and then **Route planning**. Tap **Next** until you reach **Replanning settings**.

Selecting a route type

Every time you plan a route, you can choose to be asked about the type of route you want to plan.

To do this, tap **Settings** followed by **Route planning**, then **Route types**. Tap **Ask me every time I plan**.

If you are using a TomTom camper and caravan product, to choose the type of route you have to set your vehicle type to **Car**. Tap **Settings** followed by **Vehicle and routes**, then **Vehicle and route types**. Select **Car** as your vehicle type, then tap **Ask me every time I plan**.

Note: You can only choose to be asked about the type of route when you select a car as your vehicle.



The types of route you can choose from are as follows:

- **Fastest route** - the route which takes the least time.
- **Eco route** - the most fuel-efficient route for your journey.
- **Shortest route** - the shortest distance between the locations you set. This may not be the quickest route, especially if the shortest route is through a town or city.
- **Walking route** - a route designed for making the journey on foot.
- **Bicycle route** - a route designed for making the journey on a bicycle.

Tap **Next**. If you selected **Fastest route**, you have to choose if you want to always avoid motorways.

Frequent destinations

If you often make trips to the same destinations, you can set your TomTom device to ask if you want to plan a route to one of these locations every time the device starts. This is faster than planning a route in the normal way.



Show my frequent destinations

You can set your TomTom device to ask if you want to plan a route to one of your frequently visited destinations every time the device starts.

To change this setting, do the following:

1. Tap **Start up** in the Settings menu and then select **Ask for a destination**.
2. Tap **Yes**, then tap **Yes** again to begin entering information about the destination.
3. Select a symbol for the destination and tap **Done** to set the symbol, then tap **Yes**.

Tip: To add new destinations, select one of the numbered symbols and enter a name for the new destination button.

4. Tap **Yes** and if required enter a new name, then tap **Done**.
5. Enter the address details in the same way you enter an address when planning a route, then tap **Done**.
6. If you want to set more destinations, repeat the steps above. Otherwise, tap **Done**.
7. You are asked if you want to change the start-up image.
8. If you want to change the image, tap **Yes** then follow the instructions shown on the screen. Otherwise, tap **No**.

Every time your device starts, you are asked if you want to plan a route. If you tap **Cancel**, the Driving View opens.

Using arrival times

You can set your TomTom device to ask you if you need to arrive at a particular time when you plan a route.



Tap **Status bar** in the Settings menu, to enable or disable arrival time notifications.

To enable arrival time notifications, select **Leeway**.

Status bar

After planning a route, tap **YES** to enter a preferred arrival time.

Your device calculates your arrival time and shows you whether you will arrive on time.

You can also use this information to work out when you need to leave. If your device shows that you will arrive 30 minutes early, you can wait and leave in 30 minutes time, rather than arrive early.

Your arrival time is constantly recalculated during your journey. The status bar shows whether you will arrive on time or if you are going to be late, as shown below:

+55^{min}

You will arrive 55 minutes before the arrival time you entered.

If the estimated arrival time is more than five minutes before the time you entered, it is shown in green.

+3^{min}

You will arrive 3 minutes before the arrival time you entered.

If the estimated arrival time is less than 5 minutes before the time you entered, it is shown in yellow.

-19^{min}

You will arrive 19 minutes late.

If the estimated arrival time is later than the time you entered, it is shown in red.

Navigation menu options

When you tap **Navigate to** or **Drive to**, you can set your destination in many ways, not just by entering the address. The other options are listed below:



Home

Tap this button to navigate to your Home location.

You will probably use this button more than any other.



Favourite

Tap this button to select a Favourite as your destination.



Address

Tap this button to enter an address as your destination.



Tap this button to select your destination from a list of places you have recently used as destinations.

Recent destination



Tap this button to navigate to a Point of Interest (POI).

Point of Interest



On some devices you can enter an address using speech. See Voice control.

Spoken address



Tap this button to select a point on the map as your destination using the map browser.

Point on map



Tap this button to enter a destination using latitude and longitude values.

Latitude Longitude



Tap this button to select your last recorded position as your destination.

Position of last stop



Tap this button to use Local Search with Google to help you find shops and businesses in and around your current location.

You can choose to search for shops and businesses near you, near your destination, near any other destination or in a city.

Local search

Note: Only available on LIVE devices. You can either search using Google or using TomTom Places. You can set which search provider to use in the **Advanced settings**.



Local search

Tap this button to use Local Search with TomTom Places to help you find shops and businesses in and around your current location.

You can choose to search for shops and businesses near you, near your destination, near any other destination or in a city.

For example, if you are looking for a swimming pool near your current location, enter 'swimming pool' and choose the best search result.

Note: Only available on LIVE devices. You can either search using

Google or using TomTom Places. You can set which search provider to use in the **Advanced settings**.

Planning a route in advance

You can use your TomTom device to plan a route in advance, selecting your starting point and your destination.

Here are some more reasons to plan a route in advance:

- Find out how long a journey is going to take before you start.
- You can also compare journey times for the same route at different times of the day or on different days of the week. Your device uses IQ Routes when planning a route. IQ Routes calculates routes based on the real average speeds measured on roads.
- Study the route of a journey you are planning.
- Check a route for someone who is coming to visit you and then explain the route to them in detail.

To plan a route in advance, follow these steps:

1. Tap the screen to bring up the Main menu.
2. Tap the arrow button to move to the next menu screen and tap **Plan route**.



This button is shown while there is no planned route on your TomTom device.

3. Select the starting point for your journey in the same way that you would select your destination.
4. Set the destination for your journey.
5. If Route planning settings are set to **Ask me every time I plan**, select the type of route you want to plan:
 - **Fastest route** - the route which takes the least time.
 - **Eco route** - the most fuel-efficient route for your journey.
 - **Shortest route** - the shortest distance between the locations you set. This may not be the quickest route, especially if the shortest route is through a town or city.
 - **Avoid motorways** - a route which avoids motorways.
 - **Walking route** - a route designed for making the journey on foot.
 - **Bicycle route** - a route designed for making the journey on a bicycle.
6. Choose the date and time that you will make the journey you are planning.

Your device uses IQ Routes to work out the best possible route at that time. This is useful to see how long a journey takes at different times of the day or on different days of the week.

Your navigation device plans the route between the two locations you selected.

Viewing route information

You can access these options for the route you last planned by tapping **View route** in the Main Menu or the **Details** button on the route summary screen.

You can then select from the following options:



Tap this button for a list of all the turn instructions on the route.
This is very useful if you need to explain a route to someone else.

Show instructions



Tap this button to see an overview of the route using the map browser.

Show map of route



Tap this button to watch a demo of the journey. You can interrupt the demo at any time by tapping the screen.

Show route demo



Tap this button to open the route summary screen.

Show route summary



Tap this button to see a preview of your destination.

You can navigate to a car park near your destination, and view any available information about your destination, for example, the phone number.

Show destination



Show traffic on route

Tap this button to see all the traffic incidents on your route.

Note: This button is only shown if your device has either a traffic subscription or an RDS-TMC Receiver. Traffic information is not available in all countries or regions. For more information about TomTom traffic information services, go to tomtom.com/services.

Voice control

Note: Voice control is not supported on all devices or in all languages.

Voice control works in different ways depending on your device type.

Navigate to

If you see the button **Navigate to** in the **Main Menu** on your device, read these topics about Voice Control:

[Voice control - Navigate to](#)

Drive to

If you see the button **Drive to** in the **Main Menu** on your device, read these topics about Voice Control:

[Voice control - Drive to](#)

Voice control - Navigate to

About voice control

Note: Voice control is not supported on all devices or in all languages.

Instead of tapping the screen to control your TomTom device, you can use your voice to control your device.

For example, to increase the volume on your device, you can say "Increase volume".

To view the list of available commands, tap **Help** in the Main menu, tap **Product manuals** and then tap **What can I say?**

Important: Voice control requires a computer voice. When there is no computer voice installed and selected on your TomTom device, this feature is not available.

To select a computer voice, tap **Voices** in the Settings menu, then tap **Change voice** and select a computer voice.

Using voice control

To switch on voice control and show the button in the Driving view, tap **Voice control** in the Settings menu and select **Enable voice control**.

To switch off voice control and remove the button from the Driving view, tap **Voice control** in the Settings menu and select **Disable voice control**.

The following example shows how to use voice control to plan a journey to your Home address:

1. Tap the microphone button in the Driving view to turn on the microphone.



You see a screen with examples of commands you can say.

Tap **What can I say?** to see a full list of commands you can say. Alternatively, tap **Settings** in the Main menu, tap **Voice control** and then tap **What can I say?**

2. When you hear the tone, say a command of your choice. For example, you can say "Navigate home". Your device is only ready to listen after you hear the tone.

While you are speaking the microphone monitor shows how well the device can hear your voice:

- A green bar means the device can hear your voice.
- A red bar means your voice is too loud for the device to recognise individual words.
- A grey bar means your voice is too quiet for the device to recognise individual words.

For some phrases, your device asks for confirmation.

Tip: For the best recognition of what you say, speak normally without trying to articulate words in an unnatural way. If there is excessive road noise, for example, you may need to speak in the direction of the microphone.

3. If the command is correct, say "Yes."

If the command is incorrect, say "No" and repeat the command after you hear the prompt and tone again.

Your device plans a route from your current location to your destination.

Tip: To stop your device from listening out for further commands, say "Cancel". To go back one step, say "Back".

Planning a journey using your voice

Important: In the interest of safety and to reduce distractions while you are driving, you should always plan a route before you start driving.

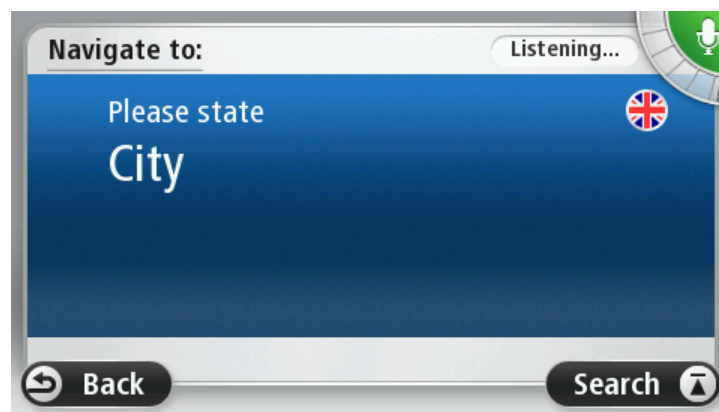
Note: It's not possible to plan a route using your voice for all maps in all countries, or in all languages.

To plan a route to an address using speech, do the following:

1. Tap the voice control button in the Driving view.



2. When you hear the tone, say, "Navigate to address".
3. Say the name of the town.



Your device shows a list of towns which sound similar to what you said and tells you which town is at the top of the list.

If the town you hear is the same as the town you requested then say, "Done" or "OK" or "Yes" or "One" or tap the town at the top of the list.

If the town you hear is incorrect, but the correct town is in the list, say the number next to the correct town or tap the name of the town.

For example, if the correct city is Rotterdam and this town is shown at the third item in the list, you can say, "Three" or tap the name, **Rotterdam**.

If the name is not in the list, then say "Back" or "No" or tap **Back** to return to the previous screen and say the town again when you hear the tone.

4. Say the streetname.

Your device shows a list of streetnames which sound similar to what you said and tells you which streetname is at the top of the list.

If the streetname you hear is the same as the streetname you requested then say, "Done" or "OK" or "Yes" or "One" or tap the streetname at the top of the list.

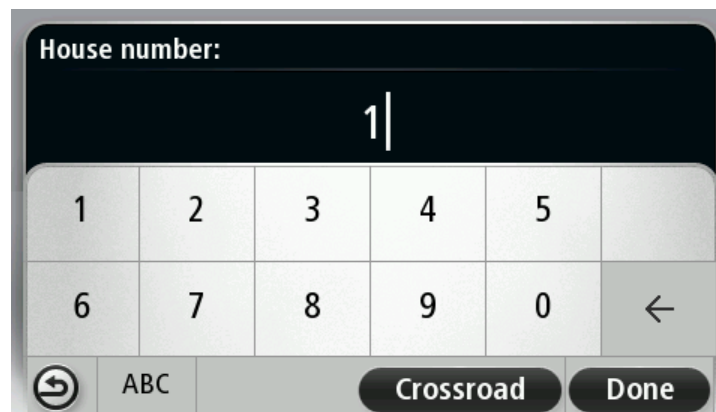
Tip: Different locations may have the same name, such as a road that spans multiple post-codes. When this happens you need to look at the screen and tap the correct location.

If the street name you hear is incorrect, but the correct streetname is in the list, say the number next to the correct streetname or tap the streetname in the list.

If the streetname is not shown in the list, say "Back" or "No" or tap **Back** to return to the previous screen and then say the streetname again when you hear the tone.

5. Say the house number.

Important: Numbers need to be spoken in the same language as the button names and menus on your device.



Numbers should be pronounced in the same way you normally say a number, in one continuous sentence. So 357 is pronounced, "Three hundred and fifty seven."

If the number is shown correctly then say, "Done" or "OK" or tap the keyboard to enter the number.

If the number is shown incorrectly then say, "Back" or "No" or tap the Backspace key and repeat the number.

Tip: If you say, "Back" when there are no numbers on the screen, your device will return you to the previous screen.

When the number is shown correctly say, "Done" or "OK." Alternatively, enter the number by tapping the screen.

6. When the route has been calculated and the route summary is shown, tap **Done**.

Your device starts to guide you to your destination, using spoken instructions and onscreen directions.

Tip: In addition to planning a route using Voice control, you can tap **Navigate to** in the Main menu and then tap **Spoken Address**. Alternatively you can tap the button at the base of the keyboard during address entry. When the button is grey, you cannot use speech to enter an address.

Voice control - Drive to

About voice control

Note: Voice control is not supported on all devices or in all languages.

Instead of tapping the screen to control your TomTom device, you can use your voice to control your device.

For example, to increase the volume on your device, you can say "Increase volume" or "Volume 50%".

To view the list of available commands, tap **Help** in the Main menu, tap **Product manuals** and then tap **What to say**.

Important: Voice control requires a computer voice. When there is no computer voice installed and selected on your TomTom device, this feature is not available.

To select a computer voice, tap **Voices** in the Settings menu, then tap **Change voice** and select a computer voice.

Using voice control

Voice control is switched on by default if it is supported by your chosen language.

To switch off voice control and remove the button from the Driving view, tap **Voice control** in the Settings menu and select **Disable voice control**.

The following example shows how to use voice control to plan a journey to your Home address:

1. Tap the microphone button in the Driving view to turn on the microphone.



You see a screen with examples of commands you can say.

Tap **What to say** to see a full list of commands you can say. Alternatively, tap **Settings** in the Main menu, tap **Voice control** and then tap **What to say**.

2. When you hear "Say a command" followed by a tone, say a command of your choice. For example, you can say "Drive home". Your device is only ready to listen after you hear the tone.

While you are speaking the microphone monitor shows how well the device can hear your voice:



A green bar means the device can hear your voice.

A red bar means your voice is too loud for the device to recognise individual words.

A grey bar means your voice is too quiet for the device to recognise individual words.

For some phrases, your device repeats what you say and asks for confirmation.

Tip: For the best recognition of what you say, speak normally without trying to articulate words in an unnatural way. If there is excessive road noise, for example, you may need to speak in the direction of the microphone.

3. If the command is correct, say "Yes."

If the command is incorrect, say "No" and repeat the command after you hear the prompt and tone again.

Your device plans a route from your current location to your destination.

Tip: To stop your device from listening out for further commands, say "Cancel". To go back one step, say "Back".

Planning a journey using your voice

Important: In the interest of safety and to reduce distractions while you are driving, you should always plan a route before you start driving.

Note: It's not possible to plan a route using your voice for all maps in all countries, or in all languages.

To plan a route to an address using speech, do the following:

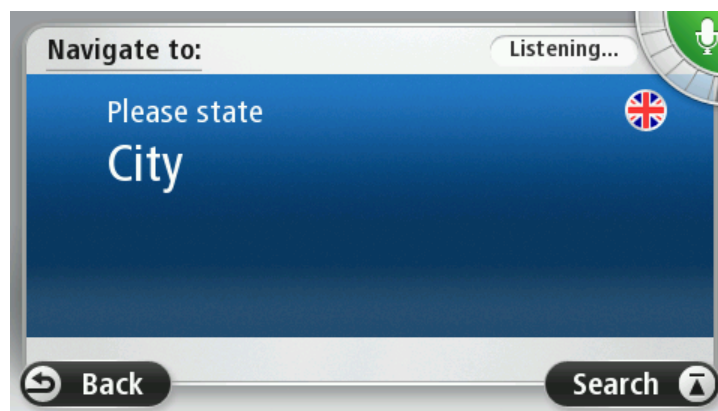
1. Tap the voice control button in the Driving view.



2. When you hear the tone, say, "Navigate to address" or "Drive to address".

Tip: Your device has either **Navigate to** or **Drive to** on the button in the Main Menu. When planning a route to an address using speech, say "Navigate to address" if the button shows **Navigate to** or "Drive to address" if the button shows **Drive to**.

3. Say the name of the town.



Your device shows a list of towns which sound similar to what you said and tells you which town is at the top of the list.

If the town you hear is the same as the town you requested then say, "Done" or "OK" or "Yes" or "One" or tap the town at the top of the list.

If the town you hear is incorrect, but the correct town is in the list, say the number next to the correct town or tap the name of the town.

For example, if the correct city is Rotterdam and this town is shown at the third item in the list, you can say, "Three" or tap the name, **Rotterdam**.

If the name is not in the list, then say "Back" or "No" or tap **Back** to return to the previous screen and say the town again when you hear the tone.

4. Say the streetname.

Your device shows a list of streetnames which sound similar to what you said and tells you which streetname is at the top of the list.

If the streetname you hear is the same as the streetname you requested then say, "Done" or "OK" or "Yes" or "One" or tap the streetname at the top of the list.

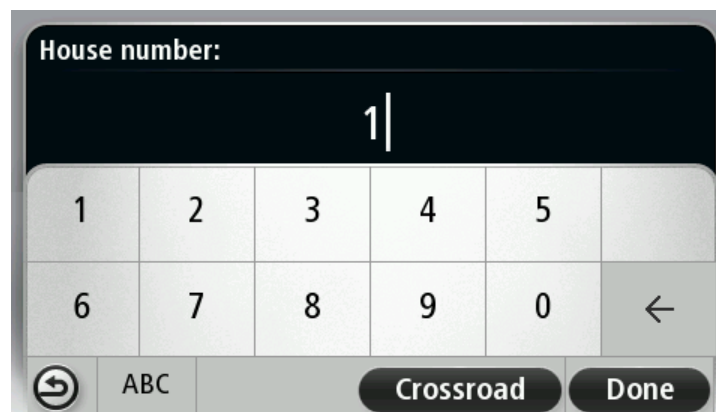
Tip: Different locations may have the same name, such as a road that spans multiple post-codes. When this happens you need to look at the screen and tap the correct location.

If the street name you hear is incorrect, but the correct streetname is in the list, say the number next to the correct streetname or tap the streetname in the list.

If the streetname is not shown in the list, say "Back" or "No" or tap **Back** to return to the previous screen and then say the streetname again when you hear the tone.

5. Say the house number.

Important: Numbers need to be spoken in the same language as the button names and menus on your device.



Numbers should be pronounced in the same way you normally say a number, in one continuous sentence. So 357 is pronounced, "Three hundred and fifty seven."

If the number is shown correctly then say, "Done" or "OK" or tap the keyboard to enter the number.

If the number is shown incorrectly then say, "Back" or "No" or tap the Backspace key and repeat the number.

Tip: If you say, "Back" when there are no numbers on the screen, your device will return you to the previous screen.

When the number is shown correctly say, "Done" or "OK." Alternatively, enter the number by tapping the screen.

6. When the route has been calculated and the route summary is shown, tap **Done**.

Your device starts to guide you to your destination, using spoken instructions and onscreen directions.

Entering addresses using your voice

Important: In the interest of safety and to reduce distractions while you are driving, you should always plan a route before you start driving.

Even if you don't use voice control to start planning a journey, you can still use your voice to enter the address.

To start planning a journey tap **Navigate to** or **Drive to** in the Main menu, then tap **Address**.

To enter the destination using your voice, tap one of the following buttons:



Spoken address

Tap this button to enter an address entirely using speech.

Spoken address helps you to enter information without tapping the screen.

This option recognises the following spoken terms:

- Commands: Yes, No, Back, Done, OK, Crossing.
- Streetnames.
- Cities and towns and their centres.
- Favourites, postcodes and POIs.
- Plan alternative route, Recalculate original, Avoid roadblock, Minimise delays, Clear route, Travel via... and Recent destination.



Tap this button at the base of the keyboard to use speech to enter an address. When the button is grey, you cannot use speech to enter an address.

This button is available for the following types of destination:

- **City centre** - to select a city or town centre.
- **Street and house number** - to select an address.
- **Crossing or intersection** - to select the point where two streets meet.

Tips

Your device recognises places and streetnames when they are spoken in the local language using local pronunciation.

Spoken address entry is not possible for postcodes which must be entered using the keyboard.

Spoken address entry is not available for all maps in all countries.

The Driving View

About the Driving View

When your TomTom navigation device starts for the first time, you are shown the Driving View along with detailed information about your current position.

Tap the centre of the screen at any time to open the Main Menu.

You can choose the screen shown when you switch on your device by tapping **Settings** in the Main Menu, then tapping **Start up**.

The Driving View



1. Zoom button - tap the magnifying glass to show buttons for zooming in and out.
2. Quick menu - to enable the quick menu, tap **Make your own menu** (page 56) in the Settings menu. If there are only one or two buttons in your menu, both buttons are shown in the Driving view.
3. Your current position.

4. Road sign information or the next street name.
5. Traffic sidebar. Tap the sidebar to see details of traffic incidents on your route.

The traffic sidebar is only shown if your device has either an HD Traffic subscription or an RDS-TMC Receiver connected. Traffic information is not available in all countries or regions.

6. Battery level indicator.
7. Microphone button for voice control.

Note: Voice control is not supported on all devices or in all languages.

8. The time, your current speed and the speed limit, if known. To see the difference between your preferred arrival time and your estimated arrival time, check the Leeway checkbox in the Status bar settings.

Tap this part of the status bar to switch between a 3D map and a 2D map.

9. The name of the street you are on.
10. Navigation instruction for the road ahead and the distance to next instruction. If the second instruction is less than 500ft after the first instruction, you see it shown immediately instead of the distance.

Tap this part of the status bar to repeat the last voice instruction and to change the volume. You can also tap here to mute the sound.

11. The remaining journey time, the remaining distance and your estimated arrival time.

Tap this part of the status bar to open the Route Summary screen.

To change the information shown in the status bar, tap Status bar in the Settings menu.

Driving View Symbols



Sound muted - this symbol is shown when the sound has been muted.

To turn the sound back on, tap the middle panel in the status bar.



Battery - this symbol is shown when the battery level is low.

When you see this symbol, you should charge your navigation device as soon as possible.



Connected to computer - this symbol is shown when your navigation device is connected to your computer.



Mobile phone not connected - this symbol is shown when the selected mobile phone is not connected to your device. You must have already established a connection to this phone.

About replanning settings

Your TomTom device helps you reach your destination as quickly as possible by showing you a faster alternative route when one is available.

To change how you are asked about alternative routes, tap **Settings** and then **Route planning**. Tap **Next** until you reach **Replanning settings**.

Note: This setting is only available if your device has either a traffic subscription or an RDS-TMC Receiver. Traffic information is not available in all countries or regions. For more information about TomTom traffic information services, go to tomtom.com/services.

Set whether you want your TomTom device to replan the current route if a faster route is found while you are driving. This is useful if traffic builds up or clears, further ahead on your route. Choose from the following settings:

- **Always switch to that route** - select this option to receive no messages when a faster route is found. The current route is automatically re-calculated to be the fastest one.
- **Ask me if I want that route** - select this option to be asked if you want to take the new route. When asked if you wish to take the alternative route, tap **Yes** to have the current route re-calculated as the fastest one. Tap **No** if you don't want to take alternative route. If you change your mind, tap the balloon at the top of the screen to take the alternative route.

Tap **Info** to see a summary of both the original and alternative routes. You can then tap **Done** to take the fastest route or **Current route** to remain on your original route.
- **Don't ask, just show me** - select this option to receive no messages and simply be shown the new route on the screen. You can then tap the balloon if you decide you want to use the alternative route.

Advanced Lane Guidance

About lane guidance

Note: Lane guidance is not available for all junctions or in all countries.

Your TomTom navigation device helps you prepare for motorway exits and junctions by showing the correct driving lane for your planned route.

As you approach an exit or junction, the lane you need is shown on the screen.

Using lane guidance

There are two types of lane guidance:

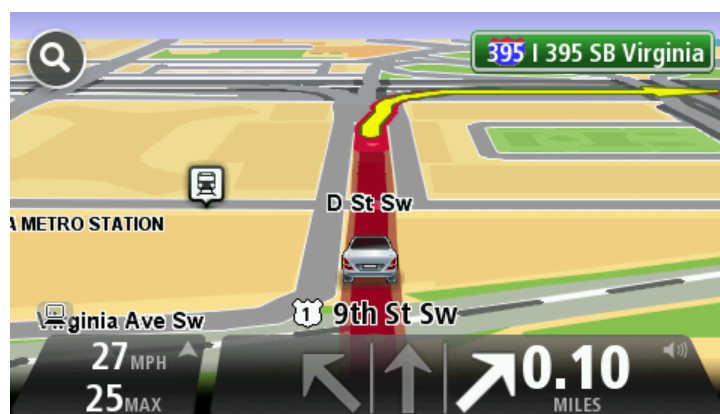
- Lane images



To turn lane images off, tap **Settings** in the Main menu, then tap **Advanced settings**. Clear the checkbox for **Show lane images**.

Tip: Tap anywhere on the screen to return to the Driving View.

- Instructions in the status bar



Tip: If no lane guidance is shown in the status bar and all lanes are highlighted, you can use any lane.

Changing your route

Making changes to your route

After you plan a route, you may want to change the route or even the destination. There are various ways to change your route without the need to completely replan the entire journey.

To change the current route, tap **Change route** in the Main menu:



Change route

Tap this button to change the current route.

This button is only shown while there is a planned route on your device.

Change route menu

To change the current route or your destination, tap one of the following buttons:



Calculate alternative

Tap this button to find an alternative to the current route.

This button is only shown while there is a planned route on your TomTom device.

This is a simple way to search for a different route to your current destination.

Your device calculates a new route from your current location, to reach your destination using completely different roads.

The new route is shown next to the original route so that you can select the route you want to use.



Avoid roadblock

Tap this button while driving on a planned route, to avoid a roadblock or traffic congestion on the road ahead.

Your device will suggest a new route which avoids the roads on your current route for the selected distance.

If the roadblock or traffic congestion suddenly clears, tap **Recalculate route** to replan your original route.

Important: Be aware that when a new route is calculated, you might immediately be asked to turn off the current road.



Minimise delays

Tap this button to avoid traffic delays on a planned route.

It is not always possible to avoid all traffic delays. Though your device continuously checks for delays on your route, you can tap this button to manually start a check. Your device then calculates the best route to

avoid all or most of the delays.

Note: This button is only shown if your device has either a traffic subscription or an RDS-TMC Receiver. Traffic information is not available in all countries or regions. For more information about TomTom traffic information services, go to tomtom.com/services.



Change destination

Tap this button to change the current destination.

When you change the destination, you are shown the same options and asked to enter the new address in the same way as when you plan a new route.



Avoid part of route

Tap this button to avoid part of the current route.

You are shown a list of the street names on your route. When you tap one of the street names, your device calculates a detour to avoid the selected street. The route summary shows both the new route and your original route. Tap the panel on the right to select one of the routes and then tap **Done**.

If you do not want to use either of the routes shown in the route summary, tap **Change route** to find another way to change your route.



Travel via...

Tap this button to change your route by selecting a location you want to travel past, maybe so you can meet someone on the way.

When you select a location to travel past, you are shown the same options and asked to enter the new address in the same way as when you plan a new route.

Your device calculates the route to your destination via the selected location.

The selected location is shown on the map using a marker.

You receive a warning when you reach your destination and when you travel past a marked location.

About waypoints

Note: This feature is not available on all TomTom navigation devices.

You can choose to use waypoints for any of the following reasons:

- You want to travel along a certain road or through a certain area on the way to your destination.
- You want to make stops before reaching your final destination.

Your route can include the following types of way points:

- Waypoints with notification - a waypoint that you are likely to want to stop and get out at, for example, a POI, a petrol station or a friend's house. You are notified when nearing and arriving at the waypoint with voice instructions or a message.

- Waypoints without notification - a waypoint that you are using to help guide your route, for example, you want to travel from Amsterdam to Rotterdam using a certain highway. You are not notified when nearing the waypoint.

Adding the first waypoint to your route

To add the first waypoint to your route, do the following:

1. Tap the screen to bring up the Main menu.
2. Tap **Change route**.
3. Tap **Travel via**.

Tip: You can also tap **View map** and then tap **Travel via** in the cursor menu. If your device supports Voice control, you also speak commands to add waypoints.

4. Choose the location for your waypoint from a choice of Home, Favourite, Address, Recent destination, POI or you can perform a search.

On the route summary screen, a message confirms that the route is being recalculated to include the waypoint. On the Change route menu, the Travel via button changes to show that you now have one waypoint on your current route.

Note: All waypoints are added initially as waypoints with notification. The maximum number of waypoints you can add is three.

Adding further waypoints to your route

To add more waypoints to your route after the first one has been added, do the following:

1. Tap the screen to bring up the Main menu.
2. Tap **Change route**.
3. Tap **Travel via**.

Tip: If your device supports Voice control, you also speak commands to add waypoints.

4. Tap **Add**.
5. Choose the location for your waypoint from a choice of Home, Favourite, Address, Recent destination, POI or you can perform a search.

A message tells you where in the list of waypoints the new one has been inserted.

6. Tap **Done**.

On the route summary screen, a message confirms that the route is being recalculated to include your waypoints.

7. Repeat to add more waypoints.

On the Change route menu, the Travel via button changes to show that you now have several waypoints on your current route.

Note: All waypoints are added initially as waypoints with notification.

Changing the order of waypoints

Waypoints are automatically added in an optimised order but you can still change the order manually if you need to. To change the order of waypoints, do the following:

1. Tap the screen to bring up the Main menu.

2. Tap **Change route**.

3. Tap **Travel via**.

You see a list of your waypoints.

4. Tap the waypoint you want to move up or down.

You see a screen with the name of your waypoint at the top.

5. Tap **Move up** or **Move down**.

Your waypoint changes its position in the list and you are immediately returned to your list of waypoints.

Tip: You cannot move an unvisited waypoint into a list of already visited waypoints.

Deleting a waypoint

To delete a waypoint, do the following:

1. Tap the screen to bring up the Main Menu.

2. Tap **Change route**.

3. Tap **Travel via**.

You see a list of your waypoints.

4. Tap the waypoint you want to delete.

You see a screen with the name of your waypoint at the top.

5. Tap **Delete**.

Your waypoint is deleted and you are immediately returned to your list of waypoints.

Changing notification settings for a waypoint

If a waypoint has notification switched on, you see an icon next to it in your list of waypoints. To switch notification on or off for a waypoint, do the following:

1. Tap the screen to bring up the Main menu.

2. Tap **Change route**.

3. Tap **Travel via**.

You see a list of your waypoints.

4. Tap the waypoint that you want to change the notification setting for.

You see a screen with the name of your waypoint at the top.

5. Tap **Switch on/off notification**.

The notification setting changes for your waypoint and you are immediately returned to your list of waypoints.

Tip: If a waypoint has already been visited, you cannot switch notification on or off.

Reactivating a waypoint

Note: You can only reactivate a waypoint that has already been visited. Visited waypoints are greyed out.

To reactivate a waypoint, do the following:

1. Tap the screen to bring up the Main menu.
2. Tap **Change route**.
3. Tap **Travel via**.

You see a list of your waypoints.

4. Tap the visited waypoint that you want to reactivate.

You see a screen with the name of your waypoint at the top.

5. Tap **Reactivate**.

The waypoint is deleted and reinserted into the list of waypoints that haven't yet been visited.

View map

About viewing the map

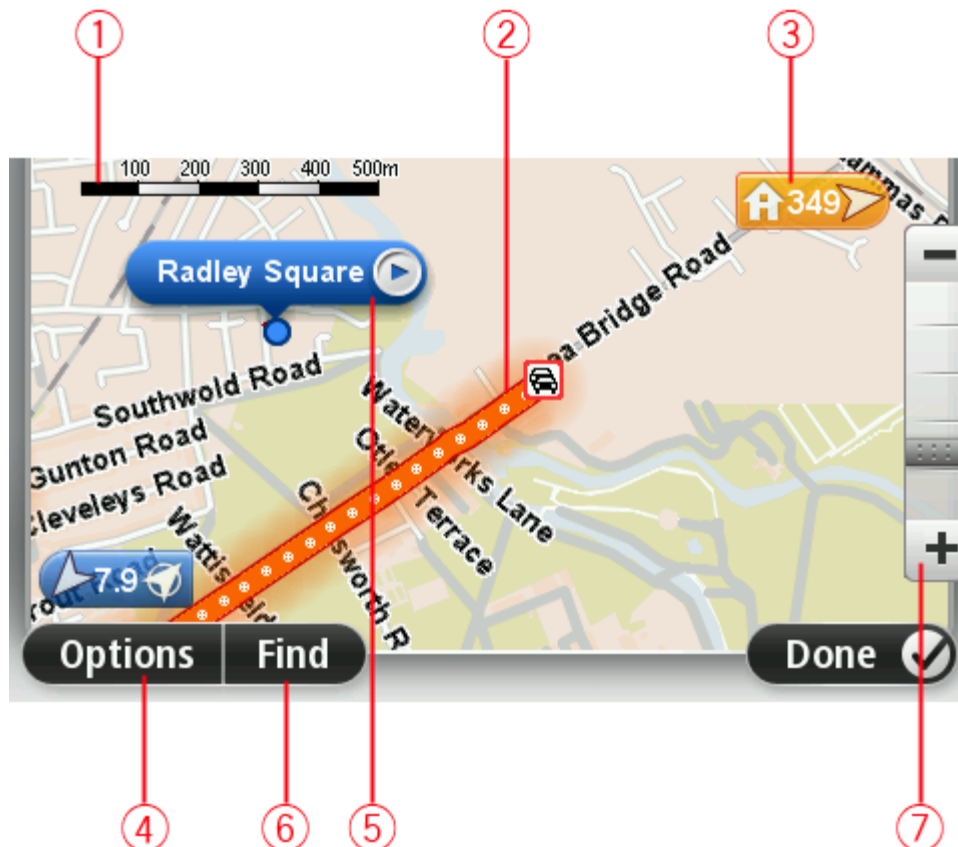
You can view the map in the same way as you might look at a traditional paper map. The map shows your current location and many other locations such as Favourites and POIs.

To view the map in this way, tap **View map** or **View route** in the Main menu.

You view different locations on the map by moving the map across the screen. To move the map, touch the screen and drag your finger across the screen. If your device supports gestures, you can also zoom in and out by touching the screen with your thumb and forefinger and sliding your fingers in and out.

To select a location on the map, tap the location on the map. The cursor highlights the location and displays useful information about the location in an information panel. Tap the information panel to create a Favourite or plan a route to that location.

View map



1. The scale bar
2. Traffic - current traffic incidents. Use the Options button to select whether traffic information is shown on the map. When traffic information is shown on the map, POIs and Favourites are not shown.

Note: To use a TomTom traffic information service, you may need a subscription or a receiver. Traffic services are not supported in all countries or regions. For more information, visit tomtom.com/services.

3. Marker

A marker shows the distance to a location. Markers are coloured as follows:

- Blue - points to your current location. This marker is grey if you lose your GPS signal.
- Yellow - points to your home location.
- Red - points to your destination.

Tap a marker to centre the map on the location pointed to by the marker.

You can also set your own marker. Tap the cursor button, then tap **Set marker position** to place a green marker at the cursor position.

To turn markers off, tap **Options**, then **Advanced** and clear the **Markers** checkbox.

4. Options button

5. The cursor with street name balloon

Tap the button in the street name balloon to open the cursor menu. You can navigate to the cursor position, make a Favourite of the cursor position, or find a Point of Interest near the cursor position.

6. The Find button

Tap this button to find specific addresses, favourites or Points of Interest.

7. The zoom bar

Zoom in and out by moving the slider.

Options

Tap the **Options** button to set the information shown on the map and show the following information:

- **Traffic** - select this option to show traffic information on the map. When traffic information is shown, POIs and Favourites are not shown.

Note: To use a TomTom traffic information service, you may need a subscription or a receiver. Traffic services are not supported in all countries or regions. For more information, visit tomtom.com/services.

- **Names** - select this option to show street and city names on the map.
- **Points of interest** - select this option to show POIs on the map. Tap **Choose POIs** to choose which POI categories are shown on the map.
- **Images** - select this option to show satellite images of the area being viewed. Satellite images are not available in every map or for every location on the map.

- **Favourites** - select this option to show your Favourites on the map.

Tap **Advanced** to show or hide the following information:

- **Markers** - select this option to enable markers. Markers point to your current location (blue), your home location (yellow) and your destination (red). The marker shows the distance to the location.

Tap a marker to centre the map on the location which the marker is pointing to.

To create your own marker, tap the cursor button. Then tap **Set marker position** to place a green marker at the cursor position.

To disable markers, tap **Options**, then tap **Advanced** and unselect **Markers**.

- **Coordinates** - select this option to show GPS coordinates in the lower left corner of the map.

Cursor menu

The cursor can be used to do more than highlight a location on the map.

Position the cursor on a location on the map, then tap **Cursor** and then tap one of the following buttons:



Tap this button to plan a route to the cursor position on the map.

Navigate there



Tap this button to view information about the location on the map such as the address.

View location



Tap this button to create your own green marker and place it at the cursor position.

If a green marker exists, this button changes to **Delete marker**.

Set marker position



Tap this button to find a POI near the cursor position on the map.

For example, if the cursor currently highlights a restaurant location on the map, you can search for a nearby parking garage.

Find POI nearby



Tap this button to make a map correction for the cursor position on the map.

You can make the correction only on your own map or you can share the correction with the TomTom Map Share community.

Correct location



Tap this button to create a Favourite at the cursor position on the map.

Add as Favourite



Tap this button to create a POI at the cursor position on the map.

Add as POI



Tap this button to travel via the cursor position on the map as part of your current route. Your destination remains the same as before, but your route now includes this location.

Travel via...

This button is only available while there is a planned route.



Tap this button to centre the map on the cursor position.

Centre on map



Note: Hands-free calling is not supported on all devices.

Call...

Tap this button to call the location at the cursor position.

This button is only available if your TomTom device has the phone number for the location.

The phone numbers for many POIs are available on your TomTom device.

You can also call phone numbers of your own POIs.

Map corrections

About Map Share

Map Share helps you correct map errors. You can correct several types of map error.

To make corrections to your own map, tap **Map corrections** in the Settings menu.

Note: Map Share is not available in all regions. For more information, go to tomtom.com/mapshare.

Correcting a map error

Important: For safety reasons, do not enter the full details of a map correction while you are driving. Mark the location of the map error instead and enter the full details later.

To correct a map error, do the following:

1. Tap **Map corrections** in the Settings menu.



2. Tap **Correct a map error**.
3. Select the type of map correction you want to report.
4. Select how you want to select the location.
5. Select the location. Then tap **Done**.
6. Enter the details of the correction. Then tap **Done**.
7. Tap **Send**.

The correction is saved.

Types of map correction

To make a correction to your map, tap **Map corrections** in the Settings menu, then tap **Correct a map error**. There are several types of map correction available.



(Un)block street

Tap this button to block or unblock a street. You can block or unblock the street in one or both directions.

For example, to correct a street near to your current location, do the following:

1. Tap **(Un)block street**.
 2. Tap **Near you** to select a street near your current location. You can
-

select a street by name, a street near your Home location or a street on the map.

3. Select the street or section of a street you want to correct by tapping it on the map.

The street you select is highlighted and the cursor shows the name of the street.

4. Tap **Done**.

Your device shows the street and whether the traffic is blocked or allowed in each direction.



5. Tap one of the direction buttons to block or unblock the flow of traffic in that direction.

6. Tap **Done**.



Reverse traffic direction

Tap this button to correct the traffic direction of a one-way street, where the direction of traffic is different from the direction shown on your map.

Note: Reverse traffic direction only works for one-way streets. If you select a two-way street you will be given the chance to block/unblock the street rather than changing the direction.



Edit street name

Tap this button to change the name of a street on your map.

For example, to rename a street near to your current location:

1. Tap **Edit street name**.
2. Tap **Near you**.
3. Select the street or section of a street you want to correct by tapping it on the map.

The street you select is highlighted and the cursor shows the name of the street.

4. Tap **Done**.
 5. Type the correct street name.
 6. Tap **Done**.
-



Change turn restrictions

Tap this button to change and report incorrect road turn restrictions.



Change road speed

Tap this button to change and report the road speed limit.



Add or remove roundabout

Tap this button to add or remove a roundabout.



Add missing POI

Tap this button to add a new Point of Interest (POI).

For example to add a new restaurant near to your current location:

1. Tap **Add missing POI**.
2. Tap **Restaurant** in the list of POI categories.
3. Tap **Near you**.
4. Select the location of the missing restaurant.

You can select the location by entering the address or by selecting the location on the map. Select **Near you** or **Near home** to open the map at your current location or at your Home location.

5. Tap **Done**.
6. Type the name of the restaurant then tap **OK**.
7. If you know the telephone number of the restaurant you can type it, then tap **OK**.

If you don't know the number, just tap **OK** without typing a number.



Edit POI

Tap this button to edit an existing POI.

You can use this button to make the following changes to a POI:

- Delete the POI.
- Rename the POI.
- Change the telephone number of the POI.
- Change the category that a POI belongs to.
- Move the POI on the map.



Comment on POI

Tap this button to enter a comment about a POI. Use this button if you cannot edit the error with the POI using the **Edit POI** button.



Correct house number

Tap this button to correct the location of a house number. Enter the address that you wish to correct and then indicate on the map the correct location of that house number.



Existing street

Tap this button to edit an existing street. Once you have selected the street, you can select an error to report. You can select more than one type of error for a street.



Missing street

Tap this button to report a missing street. You have to select the start and end points of the missing street.



City

Tap this button to report an error about a city, town or village. You can report the following types of error:

- City is missing
- Wrong city name
- Alternative city name
- Other



Motorway entrance/exit

Tap this button to report an error about a motorway entrance or exit.



Postcode

Tap this button to report an error about a postcode.



Other

Tap this button to report other types of corrections.

These corrections are not immediately applied to your map but are saved in a special report.

You can report missing streets, errors in motorway entrances and exits and missing roundabouts. If the correction you want to report is not covered by any of these report types, enter a general description then tap **Other**.

Sounds and voices

About sounds and voices

Your TomTom device uses sound for some or all of the following:

- Driving directions and other route instructions
- Warnings that you set
- Hands-free phone calls

Note: Hands-free calling is not supported on all navigation devices. There are two types of voice available for your device:

- Computer voices
- Computer voices are generated by your device. They provide route instructions and read aloud city and street names, traffic and other useful information.
- Human voices

These are recorded by an actor and only provide route instructions.

About computer voices

Your TomTom device uses text-to-speech technology and computer voices to read the street names on your map as it guides you on your route.

The computer voice analyses the whole phrase or sentence before speaking, to ensure that the sentence sounds as close as possible to natural speech.

Computer voices can recognise and pronounce foreign towns and street names. For example, the English computer voice can read and pronounce French street names.

Selecting a voice

To select a different voice on your TomTom device, either tap **Change voice** in the **Settings** menu or tap **Voices**, then tap **Change voice** and select the required voice.

Changing the volume level

You can change the volume on your TomTom device in several ways.

- In the Driving view.
Tap the central panel on the status bar and move the slider to adjust the volume. The last route instruction is played so you can hear the new volume level.
- In the Settings menu.
Tap **Settings** in the Main menu, then tap **Volume** and move the slider to adjust the volume. Tap **Test** to listen to the new volume level.

Automatic volume control

To set your TomTom device to automatically adjust the volume, do the following:

1. Tap **Settings** in the Main menu.
2. Tap **Volume**.
3. Select **Link volume to car speed** to automatically adjust the volume inside the car in response to changes in the speed of your driving.
4. Tap **Done**.

Settings

About Settings

You can change the way your TomTom device looks and behaves. Most of the settings on your device can be accessed by tapping **Settings** in the Main menu.

Note: Not all settings described here are available on all devices.

2D/3D settings



2D/3D settings

Tap this button to set the default view of the map. To switch between 2D and 3D views while driving, tap the centre part of the status bar in Driving View.

It is sometimes easier to view the map from above, such as when navigating a complex road network.

The 2D view shows a two dimensional view of the map as though viewed from above.

The 3D view shows a three dimensional view of the map as though you are driving through the landscape.

The following buttons are available:

- **In 2D view: rotate map in direction of travel** - tap this button so the map is rotated automatically with the direction you are travelling always at the top.
- **Switch to 3D view when following a route** - tap this button to show the map automatically in 3D view when you are following a route.

Advanced settings



Advanced settings

Tap this button to select the following advanced settings:

- **Show house number before street name** - when this setting is selected, addresses are shown with the house number followed by the street name, such as 10 Downing Street.
- **Show street names** - when this setting is selected, street names are shown on the map in the Driving View.
- **Show next street name** - when this setting is selected, the name of the next street on your route is shown at the top of the Driving view.
- **Show current street name on map** - when this setting is selected, the name of the street you are on is shown above the status bar on the Driving View.

- **Show location preview** - when this setting is selected, a graphical preview of your destination is shown during route planning.
- **Enable automatic zooming in 2D view** - when this setting is selected, the entire route is shown in the Driving View when the map is being shown in 2D.
- **Enable automatic zooming in 3D view** - when this setting is selected, you see a wider view when you are on motorways and a major roads. You then zoom in automatically as you approach junctions.
- **Show lane images** - when this setting is selected, a graphical view of the road ahead shows which lane you need when you approach a junction or motorway exit. This feature is not available for all roads.
- **Show tips** - this setting switches tips on and off.
- **Automatically adjust clock for time zone** - when this setting is selected, your clock is automatically adjusted for your time zone.
- **TomTom Places or Google** - Local Search can use either TomTom Places or Google as the underlying search tool.

Tip: If you don't have TomTom Places, try connecting to My-TomTom to download all the latest updates for your navigation device.

When Local Search uses TomTom Places, you can do the following:

- Find businesses and places by name, category or keyword for all connected countries.
- Search in your own language, when that language is supported.

Detailed view per place including company description, keywords and opening hours for supported countries.

Note: LIVE Services are not available in all countries or regions, and not all LIVE Services are available in all countries or regions. You may be able to use LIVE Services when travelling abroad. For more information on available services, go to tomtom.com/services.

Battery saving



Battery saving

To change the power saving settings, tap this button on your device.

Brightness



Brightness

Tap this button to set the brightness of the screen. Move the sliders to adjust the brightness level.

To view the map and menus in day or night colours, tap **Use day colours** or **Use night colours** in the Settings menu.

Car symbol



Car symbol

Tap this button to select the car symbol that shows your current location in the Driving view.

Clock



Clock

Tap this button to select the time format. As soon as you have a GPS fix, the time will be set automatically. If you don't have a GPS fix, you can choose to set the time manually.

Connections



Connections

Tap this button to open the **Connections** menu. The menu items let you control your navigation device's connections.

See also

Enable / Disable Bluetooth	53
Enable / Disable flight mode	54
GPS status	55
Mobile phone menu	72

Enable / Disable Bluetooth



Enable Bluetooth

Tap this button to enable Bluetooth®.



Tap this button to disable Bluetooth®.

Disable Bluetooth

Enable / Disable flight mode



Tap this button to enable or disable flight mode. Flight mode stops all communication from the device.

**Enable / Disable
flight mode**

Favourites



Favourites

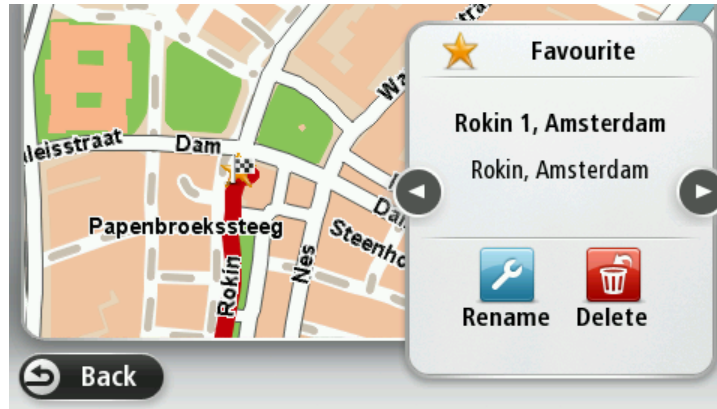
Tap this button to add, rename or delete Favourites.

Favourites provide an easy way to select a location without the need to enter the address. They do not need to be favourite places, they can simply be seen as a collection of useful addresses.

To create a new Favourite, tap **Add**. Then enter the location address in the same way that you enter an address when you plan a route.



To view or change an existing Favourite, tap one of the items in the list. To see more Favourites on the map, tap the left or right buttons.



GPS status



GPS status

Tap this button to see the current status of GPS reception on your device.

Home location



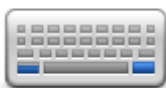
Home location

Tap this button to set or change your Home location. You enter the address in the same way as you do when you plan a route.

Your Home location provides an easy way to plan a route to an important location.

For most people, your Home location will be your home address. However, you might prefer to set the location to another regular destination, such as your workplace.

Keyboard



Keyboard

Tap this button to select the keyboards that will be available for your use and the layout of the Latin keyboard.

You use the keyboard to enter names and addresses, such as when you plan a route or search for the name of a town or a local restaurant.

Language



Language

Tap this button to change the language used for all the buttons and messages you see on your device.

You can choose from a wide range of languages. When you change the language, you are also given the opportunity to change the voice.

Make your own menu



Make your own menu

Tap this button to add up to six buttons to your own personalised menu.

If there are only one or two buttons in your menu, both buttons are shown in the Driving view.

If you have three or more buttons in your menu, then a single button is shown in the Driving view which opens your menu when tapped.

Manage POIs



Manage POIs

Tap this button to manage your own Point of Interest (POI) categories and locations.

You can set your TomTom device to let you know when you are near to selected POI locations. For example, you could set the device to let you know when you are approaching a petrol station.

You can create your own POI categories and add your own POI locations to these categories.

You can, for example, create a new POI category called Friends. You could then add all your friends' addresses as POIs in this new category.

Tap the following buttons to create and maintain your own POIs:

- **Add POI** - tap this button to add a location to one of your own POI categories.
- **Warn when near POI** - tap this button to set your device to warn you when you are near selected POIs.
- **Delete POI** - tap this button to delete one of your own POI categories.
- **Edit POI** - tap this button to edit one of your own POIs.
- **Add POI category** - tap this button to create a new POI category.
- **Delete POI category** - tap this button to delete one of your own POI categories.

Map colours



Map colours

Tap this button to select the colour schemes for day and night map colours.

Tap **Search** to search for a colour scheme by typing the name.

Map corrections



Map corrections

Tap this button to [correct errors on your map](#).

Me and my device



Me and my device

Tap this button to find technical information about your TomTom, and to select whether you want to share information with TomTom.

A menu opens with the following options:



About my device

Tap this button to find technical information about your TomTom, such as the device serial number, application version and the map version.



My information

Tap this button to change whether you want to share information with TomTom.

MyTomTom account



MyTomTom account

Tap this button to log in to your TomTom account.

You can only log in to one account at a time on your device. If you have more than one account or several people share the same device, you can switch from one account to another as required.

Operate left-handed / Operate right handed



Operate left-handed / Operate right-handed

Tap this button to make it easier for right- or left-handed operation. This will affect items such as the zoom bar when you are viewing the map.

Phones



Phones

Tap this button on the **Connections** menu to open the [Phones menu](#).

Reset factory settings



Reset factory settings

Tap this button to delete all your personal settings and restore the standard factory settings to your TomTom device.

This is not a software update and will not affect the version of the software application installed on your device.

Important: This feature deletes all your personal settings!

If you want to keep your personal information and settings, you should perform a full backup of your device before you reset the device. You can then restore all your personal information and settings after you reset the device.

This includes items such as your Home and Favourite locations, your personal menu and your POI categories and POI locations.

Route planning



Route planning

Tap the **Route planning** button to set the way your TomTom calculates the routes that you plan.

Tap the button for each option to change the settings.

Note: This setting is available if you are not using a TomTom camper and caravan product.

For camper and caravan products, the [vehicle and routes](#) setting is available instead.

Route types

Set the type of route you want your TomTom to calculate.

Tap **IQ Routes** to set if you want the device to use IQ Routes information to help find the best route.

Toll roads, Ferries, Carpool lanes and Unpaved roads settings

Set how your TomTom should manage each of these road features when the device calculates a route.

Carpool lanes are sometimes known as High Occupancy Vehicle Lanes and are not present in every country. To travel on these lanes, you may need to have more than one person in the car, for example, or the car may need to use environmentally-friendly fuel.

Route summary

Set whether you want the route summary screen to close automatically after you plan a route. If you select **No**, then you will need to tap **Done** to close the route summary screen every time you plan a route.

Safety settings



Safety settings

Tap this button to select the safety features you want to use on your device.

Show POI on map



Show POI on map

Tap this button to select the types of Point of Interest (POI) you want to see on the map.

1. Tap **Show POI on map** in the Settings menu.
2. Select the POI categories you want to be shown on the map.
Tap **Search** and use the keyboard to search for a category name.
3. Select whether you want POIs to be shown in 2D or 3D views of the map.
4. Tap **Done**.

Point of Interest locations are shown on the map as symbols.

Speaker



Speaker

Tap this button to select the loudspeaker or loudspeaker connection that is used by your device.

Start up



Start up

Tap this button to set what happens when your device starts.

Status bar



Status bar

Tap this button to select the information you want to see on the status bar:

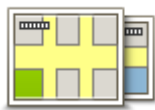
- **Horizontal** - show the status bar at the bottom of the Driving view.
- **Vertical** - show the status bar on the right-hand side of the Driving view.
- **Maximum speed**

Important: The speed limit is shown next to your current speed. If you drive faster than the speed limit, you see a warning indicator in the status bar, for example the status bar pane turns red.

Information about speed limits is not available for all roads.

- **Current time**
- **Remaining distance** - the distance to your destination.
- **Leeway** - your device shows how late or early you will arrive, compared with your preferred arrival time that was set when you planned the route.

Switch map



Maps

Tap this button to select the map you want to use for route planning and navigation.

Although you can store more than one map on the device, you can only use one map at a time for planning and navigation.

To switch from the current map to plan a route in another country or region, simply tap this button.

Note: The first time you switch to a map, you may need to connect to

your MyTomTom account and activate the map.

Turn off voice guidance / Turn on voice guidance



Turn off Voice guidance

Tap this button to switch off voice guidance. You will no longer hear spoken route instructions but you will still hear information such as traffic information and warnings.

Voice guidance is also switched off if you tap **Turn off sound** in the Settings menu.

Note: If you change the voice on your device, then voice guidance is automatically switched on for the new voice.



Turn on Voice guidance

Tap this button to switch on voice guidance and hear spoken route instructions.

Units



Units

Tap this button to set the units used on your device for features such as route planning.

Use night colours / Use day colours



Use night colours

Tap this button to reduce the brightness of the screen and display the map in darker colours.

When driving at night or when driving through a dark tunnel, it is easier to view the screen and less distracting for the driver if the brightness of the screen is dimmed.

Tip: Your device can switch between day and night colours depending on the time of day. To automatically switch between night and day colours, tap **Brightness** in the Settings menu and select **Switch to night colours when dark**.



Use day colours

Tap this button to increase the brightness of the screen and display the map in brighter colours.

Vehicle and routes



Vehicle and routes

Tap this button to set your vehicle type and change how routes are planned.

Tap the button for each option to change the settings.

Note: This setting is only available if you are using a TomTom camper and caravan product.

For other products, the [route planning](#) setting is available instead.

To set up your vehicle, or change between vehicles, tap **Vehicle and route types**.

You can then select your vehicle type and [set up your device for your vehicle](#).

Route types

Set the type of route you want your TomTom to calculate.

Tap **IQ Routes** to set if you want the device to use IQ Routes information to help find the best route.

Toll roads, Ferries, Carpool lanes and Unpaved roads settings

Set how your TomTom should manage each of these road features when the device calculates a route.

Carpool lanes are sometimes known as High Occupancy Vehicle Lanes and are not present in every country. To travel on these lanes, you may need to have more than one person in the car, for example, or the car may need to use environmentally-friendly fuel.

Route summary

Set whether you want the route summary screen to close automatically after you plan a route. If you select **No**, then you will need to tap **Done** to close the route summary screen every time you plan a route.

Voices



Change voice

Tap this button to change the voice that gives spoken directions and other route instructions.

A wide range of voices are available. There are computer voices which can read street names and other information directly from the map and there are human voices which have been recorded by actors.



Voice settings

Tap this button to set the type of spoken directions and other route instructions your device will read aloud.

Voice control



Tap this button to open the **Voice control** menu which contains the following buttons:

Voice control



Tap this button to disable voice control.

Disable voice control



Tap this button to enable voice control.

Enable voice control



Tap this button to see a list of commands you can say when using voice control.

What to say

Volume



Tap this button to set the volume level for your device. Move the slider to change the volume.

Volume

Points of Interest

About Points of Interest

Points of Interest or POIs are useful places on the map.

Here are some examples:

- Restaurants
- Hotels
- Museums
- Parking garages
- Petrol stations

Creating POIs

Tip: For help on managing third party POIs, search for "Third party POIs" at: tomtom.com/support.

1. Tap the screen to open the Main menu.
2. Tap **Settings**.
3. Tap **Manage POIs**.
4. If there are no POI categories or the one you want to use does not exist, tap **Add POI category** and create a new category.



Every POI must be assigned to a POI category. This means you need to have created at least one POI category before you can create your first POI.

You can only add POIs to POI categories you have created.

For more information on creating POI categories, read **Managing POIs**.

5. Tap **Add POI**.
6. Select the POI category you want to use for the new POI.
7. Tap a button to enter the POI address in the same way that you plan a route.
8. The POI is created and saved in the selected category.



Home

Tap this button to set your Home location as a POI.

This is useful if you decide to change your Home location, but first want to create a POI using the current Home address.



Favourite

Tap this button to create a POI from a Favourite.

You might want to create a POI from a Favourite because you can only create a limited number of Favourites. If you want to create more Favourites you need to delete some Favourites. To avoid losing a Favourite, save the location as a POI before you delete the Favourite.



Address

Tap this button to enter an address as a new POI.

When you enter an address, you can choose from four options.

- **City centre**
 - **Street and house number**
 - **Postcode**
 - **Crossing or intersection**
-



Recent destination

Tap this button to select a POI location from a list of places you have recently used as destinations.



Point of Interest

Tap this button to add a Point of Interest (POI) as a POI.

For example, if you are creating a category of POIs for your favourite restaurants, use this option instead of entering the addresses of the restaurants.



My location

Tap this button to add your current location as a POI.

For example, if you stop somewhere interesting, you can tap this button to create a new POI at the current location.



Point on map

Tap this button to create a POI using the map browser.

Use the cursor to select the location of the POI, then tap **Done**.



Latitude Longitude

Tap this button to create a POI by entering latitude and longitude values.



Tap this button to select the location where your device was last docked.

Position of last stop



Tap this button to create a POI by saying the address.

Spoken address

Using POIs to plan a route

When you plan a route, you can use a POI for the destination.

The following example shows how to plan a route to a car park in a city:

1. Tap **Navigate to** or **Drive to** in the Main menu.
2. Tap **Point of Interest**.
3. Tap **POI in city**.

Tip: The last POI you viewed on your TomTom device is also shown in the menu.

4. Enter the name of the town or city and select it when it is shown in the list.
5. Tap the arrow button to expand the list of POI categories.

Tip: If you already know the name of the POI you want to use, you can tap **Search by name** to enter the name and select this location.

6. Scroll down the list and tap **Car park**.
7. The car park closest to your destination is shown at the top of the list.
8. The following list explains the distances shown next to each POI. How the distance is measured varies depending on how you initially searched for the POI:
 - POI near you - distance from your current location
 - POI in city - distance from the city centre
 - POI near Home - distance from your Home location
 - POI along route - distance from your current location
 - POI near destination - distance from your destination
9. Tap the name of the car park you want to use and tap **Done** when the route has been calculated.

Your device starts to guide you to the car park.

Showing POIs on the map

You can select the types of POI locations you want to see on your maps.

1. Tap **Show POI on map** in the Settings menu.
2. Select the categories you want to be shown on the map.
3. Tap **Done**.
4. Select whether you want to see POI locations in 2D and 3D views of the map.
5. Tap **Done**.

The types of POI you have selected are shown as symbols on the map.

Calling a POI

Note: Hands-free calling is not supported on all navigation devices.

Many of the POIs on your TomTom device include phone numbers. This means that if your device supports hands-free calling, you can use your device to call the POI and plan a route to the location of the POI.

For example, you can search for a cinema, call to book a ticket and plan a route to the cinema, and all using your TomTom device.

1. Tap the phone button in the Driving view.

If the button is not visible in the Driving view, tap **Make your own menu** in the Settings menu and select **Call...** to display the button in the Driving view.

2. Tap **Point of Interest**.
3. Select how you want to search for the POI.

For example, if you want to search for a POI on your route, tap **POI along route**.

4. Tap the type of POI you want to call.

For example, if you want to call a cinema to reserve a ticket, tap **Cinema** and then select the name of the cinema you want to call. Then tap **Call** or **Dial** to make the phonecall.

Your TomTom device uses your mobile phone to call the POI.

Setting warnings for POIs

You can set a warning sound or message to be played or displayed when you approach a selected type of POI, such as a petrol station.

The following example will show how to set a warning sound to be played when you are 250 metres from a petrol station.

1. Tap **Manage POIs** or **Warn when near POI** in the Settings menu.
2. Scroll down the list and tap **Petrol station**.

Tip: To remove a warning, tap on the category name and then tap **Yes**. POI categories which have been set with a warning have a sound symbol next to the category name.

3. Set the distance as 250 metres and tap **OK**.
4. Select **Sound effect** and then tap **Next**.
5. Select the warning sound for the POI and then tap **Next**.
6. If you only want to hear the warning when the POI is directly on a planned route, select **Warn only if POI is on route**. Then tap Done.

The warning is set for the selected POI category. You will hear a warning sound when you are 250 metres from a petrol station on your route.

Manage POIs

Tap **Manage POIs** to manage your POI categories and locations.



You can set your TomTom device to let you know when you are near to selected POI locations. In this way you could, for example, set the device to let you know you when you are approaching a petrol station.

You can create your own POI categories and add your own POI locations to these categories.

This means you can, for example, create a new POI category called Friends. You could then add all your friends' addresses as POIs in this new category.

Tap the following buttons to create and maintain your own POIs:

- **Add POI** - tap this button to add a location to one of your own POI categories.
- **Warn when near POI** - tap this button to set your device to warn you when you are near selected POIs.
- **Delete POI** - tap this button to delete one of your own POI categories.
- **Edit POI** - tap this button to edit one of your own POIs.
- **Add POI category** - tap this button to create a new POI category.
- **Delete POI category** - tap this button to delete one of your own POI categories.

Help

About getting help

Tap **Help** in the Main menu to navigate to emergency services centres and other specialist services. If your device supports hands-free calling and your phone is connected to your device, you can contact emergency services directly by phone.

For example, if you are involved in a car accident, you could use the Help menu to find and call the nearest hospital and tell them your exact location.

Tip: If you do not see the Help button in the Main menu, tap **Settings** and then **Safety settings**. Clear the checkbox for **Show only essential menu options while driving**.

Using Help to phone a local service

Note: Hands-free calling is not supported on all navigation devices.

To use Help to locate a service centre, contact the centre by phone and navigate from your current location to the centre, do the following:

1. Tap the screen to show the Main Menu.
2. Tap **Help**.
3. Tap **Phone for help**.
4. Select the type of service you require, for example, **Nearest hospital**.
5. Select a centre from the list, the nearest is shown at the top of the list.

Your device shows your position on the map along with a description of the location. This helps you explain where you are while making a call.

If your navigation device supports hands-free calling and a phone is connected to your device, your device automatically dials the phone number. If no phone is connected, the phone number is displayed for you to call.

6. To navigate your way to the centre by car, tap **Navigate there**. If you are on foot, tap **Walk there**.

Your navigation device starts guiding you to your destination.

Help menu options

Note: In some countries, information may not be available for all services.



Phone for help

Tap this button to find the contact details and location of a service centre.

Note: Hands-free calling is not supported on all devices.



Drive to help

Tap this button to navigate your way by car to a service centre.



Walk to help

Tap this button to navigate your way on foot to a service centre.



Where am I?

Tap this button to see your current location on the map.

If hands-free calling is supported on your device, and your phone is connected to your device, you can tap **Where am I?**. Select the type of service you want to contact and tell them your exact location as shown on your device.



Safety and other guides

Tap this button to read a selection of guides, including a First Aid guide.



Product manuals

Tap this button to read a selection of guides relating to your navigation device. You can also access on-device help using this button.

Hands-free calling

About hands-free calls

Note: Hands-free calling is not supported on all devices.

If you have a mobile phone with Bluetooth®, you can use your TomTom device to make phone calls and send and receive messages.

Important: Not all phones are supported or compatible with all features. For more information, go to tomtom.com/phones/compatibility.

Connecting to your phone

First you must establish a connection between your mobile phone and your TomTom device.

Tap **Connections** in the Settings menu, then tap **Phones**. Tap **Manage phones** and select your phone when it is shown in the list.

You only need to do this once and your TomTom device will remember your phone.

Tips

- Make sure that you switch on Bluetooth® on your phone.
- Make sure that your phone is set to 'discoverable' or 'visible to all'.
- You may have to enter the password '0000' on your phone in order to connect to your TomTom device.
- To avoid having to enter '0000' every time you use the phone, save your TomTom device as a trusted device on your phone.

For additional information about Bluetooth settings, refer to your mobile phone user guide.

Making a call

When you have established a connection between your TomTom device and your mobile phone, you can use your navigation device to make hands-free calls on your mobile phone.

To make a phone call, tap the phone button in the Driving View. Then tap one of the following buttons:

- Tap **Home** to call your Home location.
If you have not entered a number for your Home location this button is unavailable.
- Tap **Phone number** to enter a phone number to call.
- Tap **Point of Interest** to choose a Point of Interest (POI) to call.
If your device knows the phone number of a POI, this is shown next to the POI.

- Tap **Phonebook entry** to select a contact from your phonebook.

Note: Your phonebook is automatically copied to your TomTom device when you first establish a connection with your mobile phone.

Not all phones can transfer the phonebook to your device. For more information, go to tomtom.com/phones/compatibility.

- Tap **Recently dialed** to select from a list of people or numbers you have called recently using your device.
- Tap **Recent caller** to select from a list of people or numbers who called you recently. Only calls you have received on your device are saved in this list.

Receiving a call

When someone calls you, the caller's name and phone number are shown. Tap the screen to accept or reject the call.

Auto-answer

You can set your TomTom device to automatically answer incoming phone calls.

To set automatic answering, tap **Connections** in the Settings menu, then tap **Phones**. Tap **Auto-answer settings**.

Select how long your device will wait before automatically answering your calls, then tap **Done**.

Connecting more phones to your device

You can establish connections for up to 5 mobile phones.

To add more phones, do the following.

1. Tap **Connections** in the Settings menu.
2. Tap **Phones**.
3. Tap **Manage phones**.
4. Tap **Add** and follow the instructions.

To switch between phones, tap **Manage phones**. Then tap the button for the phone you want to connect to.

Mobile phone menu

Note: Hands-free calling is not supported on all navigation devices.



Tap this button to manage the mobile phones that will be connected to your TomTom device.

You can add a profile for up to five different mobile phones.

Manage phones



Tap this button to disable or enable hands-free calling.

Disable hands-free



Tap this button to make a phone call.

Call



Tap this button to change your home phone number.

Change home number



Tap this button to select information you want to delete. You can delete the list of recent callers and the list of recently dialed numbers.

Delete



Tap this button to change the auto-answer settings.

Auto-answer settings

Important: Not all phones are supported or compatible with all features.

Favourites

About Favourites

Favourites provide an easy way to select a location without the need to enter the address. They do not need to be favourite places, they can simply be seen as a collection of useful addresses.

Tip: If you have set-up any frequent destinations, they are shown in your list of Favourites.

Creating a Favourite

To create a Favourite, do the following:

1. Tap the screen to bring up the Main menu.
2. Tap **Settings** to open the Settings menu.
3. Tap **Favourites**.
4. Tap **Add**.

Select the type of the Favourite by tapping one of the buttons described below:



Home

You can set your Home location as a Favourite.



Favourite

You cannot create a Favourite from another Favourite. This option will always be unavailable in this menu.

To rename a Favourite, tap **Favourites** in the Settings menu.



Address

You can enter an address as a Favourite.



Recent destination

Create a new Favourite by selecting a location from a list of your recent destinations.



If you visit a POI you particularly like, for example a restaurant, you can add it as a Favourite.

Point of Interest



Tap this button to add your current location as a Favourite.

For example, if you stop somewhere interesting, while you are there you can tap this button to create the Favourite.

My location



Tap this button to create a Favourite using the Map Browser.

Select the location of the Favourite using the cursor, then tap **Done**.

Point on map



Tap this button to create a Favourite by entering latitude and longitude values.

Latitude Longitude



Tap this button to create a Favourite by saying the address.

Spoken address



Tap this button to select your last recorded position as your destination.

Position of last stop

Your device suggests a name for your new Favourite. To enter a new name, there is no need to delete the suggested name, you just start typing.

Tip: It is a good idea to give your Favourite a name that is easy to remember.

Tap **OK**.

Your new favourite appears in the list.

After you have added two or more Favourites, you are asked whether you make regular trips to the same locations. If you tap **YES**, you can enter these destinations as your favourite destinations. Every time you switch on your device, you can immediately select one of these locations as your destination. To change these destinations or select a new destination, tap **Start-up** in the Settings menu, then select **Ask for a destination**.

Using a Favourite

You can use a Favourite as a way of navigating to a place without having to enter the address. To navigate to a Favourite, do the following:

1. Tap the screen to bring up the Main menu.
2. Tap **Navigate to** or **Drive to**.
3. Tap **Favourite**.
4. Select a Favourite from the list.

Your TomTom device calculates the route for you.

5. When the route is calculated, tap **Done**.

Your device will immediately start guiding you to your destination with spoken instructions and visual instructions on the screen.

Changing the name of a Favourite

To change the name of a Favourite, do the following:

1. Tap the screen to bring up the Main menu.
2. Tap **Settings** to open the Settings menu.
3. Tap **Favourites**.
4. Tap the Favourite you want to rename.

Tip: Use the left and right arrows to choose another Favourite from your list.

5. Type in the new name and then tap **OK**.
6. Tap **Done**.

Deleting a Favourite

To delete a Favourite, do the following:

1. Tap the screen to bring up the Main menu.
2. Tap **Settings** to open the Settings menu.
3. Tap **Favourites**.
4. Tap the Favourite you want to delete.

Tip: Use the left and right arrows to choose another Favourite from your list.

5. Tap **Yes** to confirm the deletion.
6. Tap **Done**.

Traffic

About RDS-TMC

The Traffic Message Channel (TMC), also known as RDS-TMC, transmits traffic information as a radio signal and is available free of charge in many countries.

TMC is not a TomTom Service, but is available when using the TomTom RDS-TMC Traffic Receiver.

Note: TomTom is not responsible for the availability or quality of traffic information provided by the Traffic Message Channel.

The Traffic Message Channel (TMC) is not available in all countries. To check the availability of TMC services in your country, go to tomtom.com/5826.

Safety Notice

Some navigation devices contain a GSM/GPRS module which can interfere with electrical devices such as cardiac pacemakers, hearing aids and aviation equipment.

Interference with these devices may endanger the health or life of you or others.

If your device includes a GSM/GPRS module, do not use it near unprotected electrical units or in areas where the use of mobile telephones is prohibited, such as hospitals and aircraft.

Using traffic information

If you are using an RDS-TMC receiver to view TMC traffic information on your TomTom device, connect the TomTom RDS-TMC Traffic Receiver to the USB connector on your device.

The traffic sidebar is shown on the right side of the Driving view. The sidebar informs you about traffic delays while you drive, using glowing dots to show you where each traffic incident is located on your route.







The top of the traffic sidebar represents your destination and shows the total time delay due to traffic jams and other incidents on your route.

The central section of the traffic sidebar shows individual traffic incidents in the order they occur on your route.

The bottom of the traffic sidebar represents your current location and shows the distance to the next incident on your route.

To make the traffic sidebar more readable some incidents may not be shown. These incidents will always be of minor importance and only cause short delays.

The colour of the pointers, as shown below, gives you an instant indication of the type of incident:

	Unknown or undetermined situation.
	Slow traffic.
	Queueing traffic.
	Stationary traffic or road closure.

Taking the fastest route

Your TomTom device regularly looks for a faster route to your destination. If the traffic situation changes and a faster route is found, your device offers to replan your journey so you can use the faster route.

You can also set your device to automatically replan your journey whenever a faster route is found. To apply this setting, tap **Traffic settings** in the Traffic menu.

To manually find and replan the fastest route to your destination, do the following:

1. Tap the traffic sidebar.

Tip: If you find that tapping the sidebar opens the Main menu instead of the traffic menu, try tapping the sidebar with your finger resting on the edge of the screen.

A summary of traffic on your route is shown.

2. Tap **Options**.
3. Tap **Minimise delays**.

Your device searches for the fastest route to your destination.

The new route may include traffic delays. You can replan the route to avoid all traffic delays, but a route which avoids all delays will usually take longer than the fastest route.

4. Tap **Done**.

Minimising delays

You can use TomTom HD Traffic to minimise the impact of traffic delays on your route. To minimise delays automatically, do the following:

1. Tap **Services** in the Main Menu.
2. Tap **Traffic**.
3. Tap **Traffic settings**.

4. Choose between always taking the faster route automatically, being asked or never changing your route.
5. Tap **Next** and then **Done**.
6. Tap **Minimise delays**.

Your device plans the quickest route to your destination. The new route may include traffic delays and may remain the same as the original route.

You can re-plan the route to avoid all delays, but this route is unlikely to be the quickest possible route.

7. Tap **Done**.

Making commuting to work easier

The **Home to work** or **Work to home** buttons in the Traffic menu lets you check your route to and from work with one tap of a button.

When you use either of these buttons, your device plans a route between your home and work locations and checks the route for possible delays.

The first time you use **Home to work**, you must set your traffic home and work locations by doing the following:

1. Tap the traffic sidebar to open the Traffic menu.

Note: If you already have a route planned, a summary of traffic incidents on your route is shown. Tap **Options** to open the Traffic menu.

2. Tap **Show home-work traffic**.
3. Set your home location and your work location.

If you have already set the locations and want to change them, tap **Change home-work**.



You can now use the **Home to work** and **Work to home** buttons.

Note: The home location you set here is not the same as the home location you can set in the **Settings Menu**. In addition, the locations you use here do not have to be your actual home and work locations. If there is another route that you often travel, you can set Work/Home to use these locations instead.



For example, to check for delays on your route home before you leave the office, do the following:

1. Tap the traffic sidebar to open the Traffic menu.

Note: If you already have a route planned, a summary of traffic incidents on your route is shown. Tap **Options** to open the Traffic menu.

2. Tap **Show home-work traffic**.
3. Tap **Work to home**.

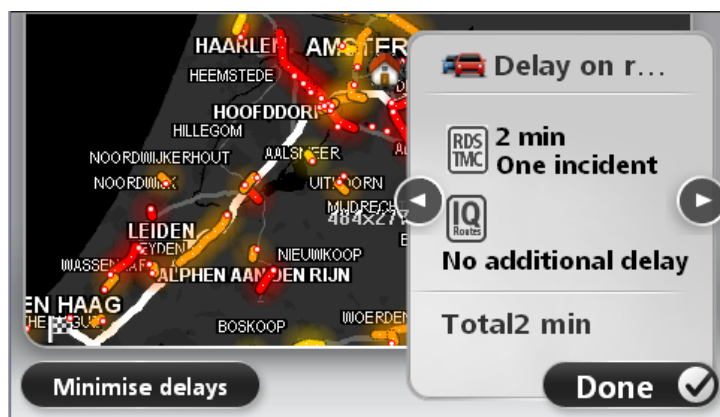
The Driving View is shown and a message is displayed telling you about traffic incidents on this route. The Traffic sidebar also shows any delays.

Getting more information about an incident

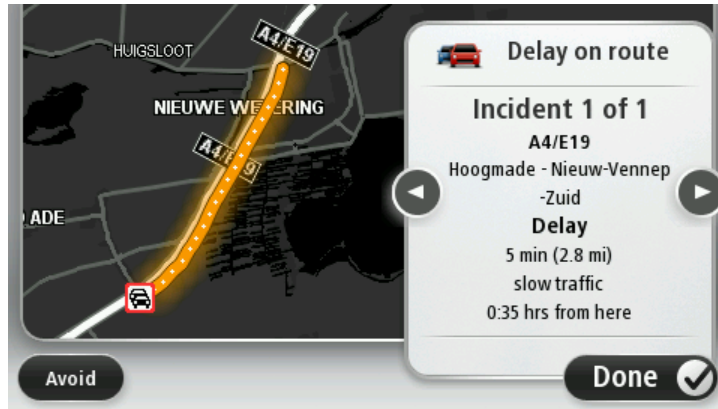
To check for delays on your route, tap **Show traffic on route** in the Traffic menu. Your navigation device shows a summary of the traffic delays on your route.

The total includes any delays due to traffic incidents and those due to busy roads, with information provided by IQ Routes.

Tap **Minimise delays** to check if you can reduce the delay.



Tap the left and right arrow buttons to move through each incident in turn, viewing the details of each one. This includes the type of incident, for example road works, and the length of delay caused by this incident.



You can also access the details about individual incidents by tapping **View map** in the Main Menu and then tapping on the traffic incident symbol.

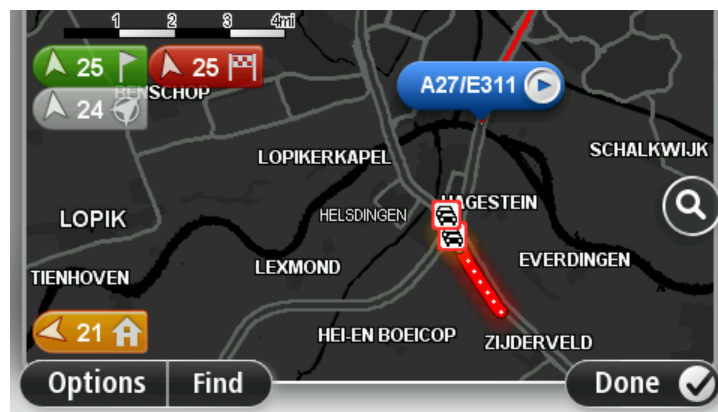
When shown on the map, a traffic incident starts with an icon. In the case of a traffic queue, the direction of the incident is from the icon towards the other end.

Checking traffic incidents in your area

Get an overview of the traffic situation in your area, using the map. To find local incidents and their details, do the following:

1. Tap the traffic sidebar then tap **Options** to open the Traffic menu.
2. Tap **View map**.
The map overview screen is shown.
3. If the map does not show your location, tap the marker to centre the map on your current location.

The map shows traffic incidents in the area.



4. Tap on any traffic incident to get more information.

A screen is shown that gives you detailed information about the incident you chose. To display information about surrounding incidents use the left and right arrows at the bottom of this screen.

Changing traffic settings

Use the **Traffic settings** button to choose how traffic information works on your navigation device.

1. Tap the traffic sidebar then tap **Options** to open the Traffic menu.
2. Tap **Traffic settings**.



3. If you are using an RDS-TMC Traffic Receiver, you will be able to select the setting **Tune manually by entering a frequency**. If you select this option, the button **Tune manually** is shown in the Traffic menu. Tap **Tune manually** to enter the frequency of a particular radio station you want to use for RDS-TMC traffic information
4. If a faster route is found while you are driving, Traffic can replan your journey to use the faster route. Select one of the following options and then tap **Done**.
 - **Always switch to that route**
 - **Ask me if I want that route**
 - **Never change my route**

Traffic incidents





Traffic incidents and warnings are shown on the map, in the Driving View and on the Traffic sidebar.

To find out more about an incident, tap **Browse Map** in the Main Menu. Tap on a traffic incident symbol on the map to see information about that incident. To display information about surrounding incidents, use the left and right arrows at the bottom of the screen.

There are two types of incident and warning signs:

- Symbols shown in a red square are traffic incidents. Your navigation device can replan to avoid them.
- Symbols shown in a red triangle are weather related. Your device does not replan to avoid these warnings.

Traffic incident symbols:

	Accident
	Road works
	One or more lanes closed
	Road closed



Traffic incident



Traffic jam

Weather related symbols:



Fog



Rain



Wind



Ice



Snow



Note: The incident avoided symbol is shown for any traffic incident that you avoid using a traffic service.

Traffic menu

To open the Traffic menu, tap the Traffic sidebar in the Driving View then tap **Options**, or tap **Traffic** in the Services menu.

The following buttons are available:



Minimise traffic delays

Tap this button to re-plan your route based on the latest traffic information.



Show home-work traffic

Tap this button to calculate the quickest route from your home location to your place of work and back.



Show traffic on route

Tap this button for an overview of traffic incidents along your route.
Tap the left and right buttons for more detailed information about each incident.

Tap **Replan** to replan your route and avoid the traffic incidents that are shown on the map.



View map

Tap this button to browse the map and see the traffic incidents shown on the map.



Change Traffic settings

Tap this button to change your settings for how the Traffic service works on your device.



Read aloud traffic info

Tap this button to hear spoken information about traffic incidents on your route.

Note: Your TomTom device must have a computer voice installed to read information aloud.

Speed cameras

About Speed Cameras

Note: LIVE Services are not available in all countries or regions, and not all LIVE Services are available in all countries or regions. You may be able to use LIVE Services when travelling abroad. For more information on available services, go to tomtom.com/services.

The Speed Cameras service warns you about the following roadside camera locations:

- Speed camera locations.
- Accident blackspot locations.
- Mobile speed camera locations.
- Average speed camera locations.
- Toll road camera locations.
- Traffic light camera locations.

Note: In France, no warnings are given for individual cameras or different types of camera. It is only possible to warn about danger zones. Danger zones are areas where there may be cameras. It's not possible to confirm or remove warnings for danger zones.

Speed camera warnings

By default, a warning sound is played for the most common types of speed camera. To change the warning sound, tap **Alert settings** in the **Speed Cameras** menu.

You are warned about speed cameras in three ways:

- Your device plays a warning sound.
- The type of speed camera and your distance from the camera is shown in the Driving View. The speed limit is also shown in the Driving View.
- The location of the speed camera is shown on the map.

Note: For average speed check cameras, your device warns you at the start and end of the average speed check area.

Changing the way you are warned



Alert settings

To change the way your TomTom device warns you about speed cameras, tap the **Alert settings** button.

You can then set how close you want to be to a speed camera before you are warned and what type of sound will be played.

For example, to change the sound that is played when you approach a fixed speed camera, do the following:

1. Tap **Services** in the Main Menu.
2. Tap **Speed Cameras**.
3. Tap **Alert settings**.

A list of speed camera types is displayed. A speaker is shown next to the speed camera types that have been set for an alert.

4. Tap **Fixed cameras**.
5. Select whether you always want to be warned or only when you are speeding. Select **Never** to turn off the warning.
6. Tap the sound you want to be used for the warning.
7. Tap **Next**.

The warning sound you selected is now set for fixed speed cameras. A speaker symbol is shown next to **Fixed cameras** in the list of types of speed camera.

Speed camera symbols

Speed cameras are shown as symbols on the Driving View.

As you approach a camera, you see a symbol showing the kind of camera and the distance to the camera. A warning sound is played. You can [change the warning sound](#) for cameras or turn warning sounds on and off for each camera.

Tap the camera symbol to report that the camera is no longer there or to confirm that it is still there.

When you first start using your device, warning sounds are played for these types of cameras:



Fixed speed camera - this type of camera checks the speed of passing vehicles and is fixed in one place.



Mobile camera - this type of camera checks the speed of passing vehicles and is moved to different places.



Mobile camera hotspot - this type of warning shows places where mobile cameras are often used.



Traffic light camera - this type of camera checks for vehicles breaking traffic rules at traffic lights.



Average speed check - these types of cameras measure your average speed between two points. You are warned at the start and end of the average speed check area.

When you first start using your device, no warning sounds are played for these types of cameras:



Accident black spot



Ungated railway crossing



Bi-directional speed camera



Toll road camera



Restricted road camera



Other camera

Report button

To show the report button in the Driving View, do the following:

1. Tap **Services** in the Main Menu.
2. Tap **Speed Cameras**.
3. Tap **Enable report button**.
4. Tap **Done**.

The report button is shown on left-hand side of the Driving View or if you are already using the quick menu, it's added to the buttons available in the quick menu.

Tip: To hide the report button, tap **Disable report button** in the Speed Cameras menu.

Reporting a new speed camera while on the move

To report a speed camera on the move, do the following:

1. Tap the [report button](#) shown in the Driving View or in the quick menu to record the location of the camera.
2. Confirm that you want to add a camera.

You see a message thanking you for adding the camera.

Note: It is not possible to report or remove warnings for danger zones in France.

Reporting a new speed camera while at home

You do not need to be at the location of a speed camera to report the new location. To report a new speed camera location while you are at home, do the following:

1. Tap **Services** in the Main Menu on your navigation device.
2. Tap **Speed Cameras**.
3. Tap **Report speed camera**.
4. Select the type of camera.
5. Use the cursor to mark the location of the camera on the map, then tap **Next**.
6. Tap **Yes** to confirm the location of the camera, or tap **No** to mark the location again on the map.

You see a message thanking you for reporting the camera.

Note: It is not possible to report or remove warnings for danger zones in France.

Reporting incorrect camera alerts

You may receive an alert for a camera that is no longer there. To report an incorrect camera alert, do the following:

Note: You can only report an incorrect camera alert while you are at the location.

1. While you are being warned about the camera, tap the warning.



2. Confirm whether the camera is still there or not.

Types of fixed speed camera you can report

When you report a speed camera while at home, you can select the type of camera you are reporting.

These are the different types of fixed speed camera:

- **Fixed camera** - this type of camera checks the speed of passing vehicles and is fixed in one place.
- **Mobile camera** - this type of camera checks the speed of passing vehicles and is moved to different places.
- **Traffic light camera** - this type of camera checks for vehicles breaking traffic rules at traffic lights.
- **Toll camera** - this type of camera monitors traffic at toll road barriers.
- **Other camera** - all other types of camera that do not fall into any of the above categories.

Average speed check camera warnings

You can set whether you want to be warned about the cameras at the start and end of an average speed check area.

All the warnings are described below:



Start of zone warning

As you approach the start of an average speed check zone, you see a visual warning in the top left hand corner of the Driving View with a distance to the camera underneath it. You hear an audible warning.

You also see a small icon on the road showing the position of the average speed check camera at the start of the zone.



Intermediate warning - type 1

Once in the speed check zone, if you are not speeding and have already received a start of zone warning, you see a visual warning in the Driving View. This reminds you that you are still in the speed check zone.



Intermediate warning - type 2

Once in the speed check zone, if you are driving faster than the permitted speed and have already received a start of zone warning, you see a visual warning in the Driving View indicating the maximum permitted speed. You also hear a quiet audible warning. These warnings are there to remind you to slow down...



Intermediate warning - type 3

Once in the speed check zone, if you are driving faster than the permitted speed and have not received a start of zone warning, you see a visual warning in the Driving View indicating the maximum permitted speed. You also hear a loud audible warning.

These warnings occur at the FIRST intermediate point only and are there to remind you to slow down...



End of zone warning

As you approach the end of an average speed check zone, you see a visual warning in the Driving View with a distance to the camera shown underneath it. You hear an audible warning.

You also see a small icon on the road showing the position of the average speed check camera at the end of the zone.

Speed Cameras menu

To open the Speed Cameras menu, tap **Services** in the Main Menu and then tap **Speed Cameras**.



Report speed camera

Tap this button to [report a new speed camera location](#).



Alert settings

Tap this button to [set the alerts](#) you will receive and the sounds used for each alert.



Disable alerts

Tap this button to disable alerts.



Enable report button

Tap this button to enable the [report button](#). The report button is shown in the Driving View or in the quick menu.

When the report button is shown in the Driving View, this button changes to **Disable report button**.

TomTom camper and caravan products

About TomTom camper and caravan products

TomTom camper and caravan products let you choose the type of vehicle you are driving so that the route planned by your device is suitable for your vehicle. You can choose a car, a car with caravan, a motorhome, or a van as the vehicle type. Routes planned by your device avoid restrictions for the vehicle type. For example, a route calculated for a motorhome may be different from the route calculated for a car. You can set the size, weight and type of your vehicle as well as your preferred type of route.

Before you can choose your vehicle type you must [select the camper and caravan map](#) on your device.

Important: You must pay attention to all traffic signs, especially those relating to your vehicle's dimensions and weight. We cannot guarantee you will never encounter them on your route and ignoring such restrictions can be dangerous.

You can select your vehicle in the quick menu on the [Driving View](#). If there are only one or two buttons in your quick menu, a small icon in the Driving View shows the type of vehicle selected. If a route is already planned and you select a different vehicle, the route is recalculated for the new vehicle.

If a route for a caravan, a camper or a van is not found, you are asked if you want to use a car route instead. If you use a car route, pay attention to restrictions you may find on the route.

You can [enter the details about the vehicle you are driving](#) and your route type in the Settings menu.

Vehicle types

You can [select a vehicle](#) from the following vehicle types:



Car

Select **Car** when you are driving a car without towing a caravan or trailer.



Car with caravan

Select **Car with caravan** when you are towing a caravan, a trailer tent, a horse trailer or just a trailer.

Tip: Select **Car** when you have unhitched your caravan or trailer from your car.



Camper

Select **Camper** when you are driving a campervan or motorhome.



Van

Select **Van** when you are driving a private van, a rental van, or other large, non-commercial vehicle.

Set up your vehicle

Before you can plan a route using roads suitable for your vehicle type you must first enter the details for your vehicle or vehicle combination.

1. Tap **Settings** in the **Main Menu**.
2. Tap **Vehicle and routes**, then tap **Vehicles and route types**.
3. Tap your [vehicle type](#). You can enter details for a **Car with caravan**, a **Camper**, and a **Van**.

Note: The **Car** button opens the standard route planning options.

4. On the **Current vehicle profile** screen, tap **Change**.
5. Enter the vehicle's weights, dimensions and speed limit. Press **Done** each time to move to the next screen.

Note: The speed limit can be different in each country, and different for each type of vehicle. You must enter the speed limit for the country you are travelling in.

Important: The dimensions and weight for your caravan or trailer also include your car's dimensions and weight.

6. In **Avoid motorways**, choose whether you want to avoid motorways. Tap **Next**.
7. In **Restriction and dead-end warnings**, choose if you want to receive warnings about restrictions and dead-ends. Tap **Next**.

Important: Set this option to **Yes** if you are driving a large camper or when towing a caravan. This option prevents you from driving into a difficult situation, such as a place where it is difficult to turn, or which has a height restriction. You receive a warning when you are driving with no route planned.

8. Set the **Replanning settings**.

Note: This setting is only available if your device has either a traffic subscription or an RDS-TMC Receiver. Traffic information is not available in all countries or regions. For more information about TomTom traffic information services, go to tomtom.com/services.

Set whether you want your navigation device to replan the current route if a faster route is found while you are driving. This is useful if traffic builds up or clears further ahead on your route. Choose from the following settings:

- **Always switch to that route** - select this option to receive no messages when a faster route is found. The current route is automatically re-calculated to be the fastest one.
- **Ask me if I want that route** - select this option to be asked if you want to take the new route. When asked if you wish to take the alternative route, tap **Yes** to have the current route re-calculated as the fastest one. Tap **No** if you don't want to take alternative route. If you change your mind, tap the balloon at the top of the screen to take the alternative route.
- **Never change my route** - select this option to always continue on your planned route.

Tap **Next**.

9. In **Map information settings**, set whether you want to be warned if your route passes through an area where your map contains only limited information. Tap **Done**.

Selecting a camper and caravan map

You must first select a camper and caravan map before you can use your TomTom camper and caravan product.

1. Tap **Settings** in the Main menu.
2. Tap **Switch map** then tap **Phones**.
3. Tap the camper map to select it.
4. Click **Done** in the Settings menu to return to the driving view.

Selecting your vehicle type

You can quickly change your vehicle type in the quick menu on the Driving view as follows:

Note: You must first [add the vehicle type option](#) to the quick menu.

1. Tap the vehicle button in the Driving view. The vehicle button shows the vehicle type currently chosen:



Tip: If there are three or more items in your quick menu, tap the quick menu button:



Then tap the **Change vehicle** button.

2. Tap the type of vehicle you drive.



If there are only one or two items in your quick menu, a small icon in the Driving View shows the type of vehicle that is selected.

If a route is already planned and you select a different vehicle, the route is recalculated for the new vehicle.

Show the vehicle type quick menu button

You can add the vehicles selection button to the [quick menu](#) so you can quickly select your vehicle type.

1. Tap **Settings** in the Main menu.
2. Tap **Make your own menu**.
3. Tap **Cancel** to clear the information screen, or **Next** then **Done** to read the information screens.
4. Select **Change between different vehicles**.
5. Click **Done**, then click **Done** again to return to the driving view.

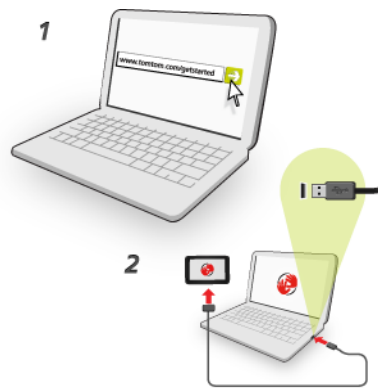
MyTomTom

About MyTomTom

MyTomTom helps you manage the contents and services of your TomTom navigation device, as well as giving you access to the TomTom community. You log in to MyTomTom on the TomTom website. It is a good idea to frequently connect your navigation device to MyTomTom to ensure you always have the latest updates.

Tip: We recommend using a broadband internet connection whenever you connect your navigation device to MyTomTom.

Setting up MyTomTom



To set up MyTomTom, do the following:

1. Connect your computer to the internet.
2. Start a browser and go to tomtom.com/getstarted.
3. Click **Download now**.

Your browser downloads the MyTomTom support application, which you need to install on your computer in order to connect your device to MyTomTom. Follow the instructions on the screen if you are asked questions while downloading.

4. When prompted, connect your device to your computer using the USB cable. Then switch your device on.

Important: You should plug the USB cable directly into a USB port on your computer and not into a USB hub or USB port on a keyboard or monitor.

Once the MyTomTom support application is installed, you can access MyTomTom from the notification area on your desktop.



Tip: When you connect your navigation device to your computer, MyTomTom tells you if there are any updates for your device.

MyTomTom account

To download content and services from TomTom, you need a MyTomTom account. You can create an account when you start using MyTomTom.

Note: If you have more than one TomTom device, you need a separate account for each device.

Addendum and Copyright

Important Safety Notices and Warnings

Global Positioning System

The Global Positioning System (GPS) is a satellite-based system that provides location and timing information around the globe. GPS is operated and controlled under the sole responsibility of the Government of the United States of America which is responsible for its availability and accuracy. Any changes in GPS availability and accuracy, or in environmental conditions, may impact the operation of this device. TomTom does not accept any liability for the availability and accuracy of GPS.

Use with care

Use of TomTom products while driving still means that you need to drive with due care and attention.

Aircraft and hospitals

Use of devices with an antenna is prohibited on most aircraft, in many hospitals and in many other locations. This device must not be used in these environments.

Battery

This product uses a Lithium-Ion battery.

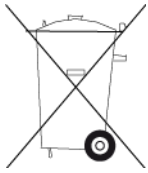
Do not use it in a humid, wet and/or corrosive environment. Do not put, store or leave your product in or near a heat source, in a high temperature location, in strong direct sunlight, in a microwave oven or in a pressurised container, and do not expose it to temperatures over 60°C (140°F). Failure to follow these guidelines may cause the battery to leak acid, become hot, explode or ignite and cause injury and/or damage. Do not pierce, open or disassemble the battery. If the battery leaks and you come into contact with the leaked fluids, rinse thoroughly with water and seek medical attention immediately. For safety reasons, and to prolong the lifetime of the battery, charging will not occur at low (below 0°C/32°F) or high (over 45°C/113°F) temperatures.

Temperatures: Standard operation: 0°C (32°F) to 45°C (113°F); short period storage: -20°C (-4°F) to 60°C (140°F); long period storage: -20°C (-4°F) to 25°C (77°F).

Caution: risk of explosion if battery is replaced by an incorrect type.

Do not remove or attempt to remove the non-user-replaceable battery. If you have a problem with the battery, please contact TomTom customer support.

THE BATTERY CONTAINED IN THE PRODUCT MUST BE RECYCLED OR DISPOSED OF PROPERLY ACCORDING TO THE LOCAL LAWS AND REGULATIONS AND ALWAYS KEPT SEPARATE FROM HOUSEHOLD WASTE. BY DOING THIS YOU WILL HELP CONSERVE THE ENVIRONMENT. USE YOUR TOMTOM DEVICE ONLY WITH THE SUPPLIED DC POWER LEAD (CAR CHARGER/BATTERY CABLE), AC ADAPTER (HOME CHARGER), IN AN APPROVED CRADLE OR USING THE SUPPLIED USB CABLE TO CONNECT TO A COMPUTER FOR BATTERY CHARGING.



If your device requires a charger, please use this device with the charger provided. For replacement chargers, go to tomtom.com for information about approved chargers for your device.

The stated battery life is a maximum possible battery life. The maximum battery life will only be achieved under specific atmospheric conditions. The estimated maximum battery life is based on an average usage profile.

For tips on extending the battery life, see this FAQ: tomtom.com/batterytips.

CE marking

This equipment complies with the requirements for CE marking when used in a residential, commercial, vehicular or light industrial environment, achieving all the appropriate provisions of the relevant legislation in the EU.



R&TTE directive

Hereby, TomTom declares that TomTom personal navigation devices and accessories are in compliance with the essential requirements and other relevant provisions of the EU Directive 1999/5/EC. The declaration of conformity can be found here: tomtom.com/legal.

WEEE directive

This symbol on the product or its packaging indicates that this product shall not be treated as household waste. In line with EU Directive 2002/96/EC for waste electrical and electronic equipment (WEEE), this electrical product must not be disposed of as unsorted municipal waste. Please dispose of this product by returning it to the point of sale or to your local municipal collection point for recycling.



Pacemakers

Pacemaker manufacturers recommend that a minimum of 15cm (6 inches) be maintained between a handheld wireless device and a pacemaker to avoid potential interference with the pacemaker. These recommendations are consistent with independent research and recommendations by Wireless Technology Research.

Guidelines for people with pacemakers

You should ALWAYS keep the device more than 15cm (6 inches) from your pacemaker.

You should not carry the device in a breast pocket.

Other medical devices

Please consult your physician or the manufacturer of the medical device, to determine if the operation of your wireless product may interfere with the medical device.

This document

Great care was taken in preparing this document. Constant product development may mean that some information is not entirely up to date. The information in this document is subject to change without notice.

TomTom shall not be liable for technical or editorial errors or omissions contained herein, nor for incidental or consequential damages resulting from the performance or use of this document. This document contains information protected by copyright. No part of this document may be photocopied or reproduced in any form without prior written consent from TomTom N.V.

Model names

4EN62, 4CS01, 4CS03, 4CQ02, 4CQ07, 4CQ01, 4KH00, 4KI00, 4KJ00, 4CR52, 4CR51, 4CR42, 4CR41, 4EN42, 4EN52, 4EV42, 4EV52, 4ER50, 4CT50

Copyright notices

© 2012 TomTom. All rights reserved. TomTom and the TomTom logo are registered trademarks of TomTom N.V. Please see tomtom.com/legal for warranties and end user licence agreements applying to this product.

© 2012 TomTom. All rights reserved. This material is proprietary and the subject of copyright protection and/or database rights protection and/or other intellectual property rights owned by TomTom or its suppliers. The use of this material is subject to the terms of a licence agreement. Any unauthorised copying or disclosure of this material will lead to criminal and civil liabilities.

Ordnance Survey © Crown Copyright Licence number 100026920.

Data Source © 2012 TomTom

All rights reserved.

SoundClear™ acoustic echo cancellation software © Acoustic Technologies Inc.

Nuance® is a registered trademark of Nuance Communications, Inc. and is used here under licence.

Some images are taken from NASA's Earth Observatory.

The purpose of NASA's Earth Observatory is to provide a freely-accessible publication on the Internet where the public can obtain new satellite imagery and scientific information about our home planet.

The focus is on Earth's climate and environmental change: earthobservatory.nasa.gov

The software included in this product contains copyrighted software that is licenced under the GPL. A copy of that licence can be viewed in the Licence section. You can obtain the complete corresponding source code from us for a period of three years after our last shipment of this product. For more information, visit tomtom.com/gpl or contact your local TomTom customer support team via tomtom.com/support. Upon request, we will send you a CD with the corresponding source code.

Linotype, Frutiger and Univers are trademarks of Linotype GmbH registered in the U.S. Patent and Trademark Office and may be registered in certain other jurisdictions.

MHei is a trademark of The Monotype Corporation and may be registered in certain jurisdictions.