

DK LABEL Die-Cut Paper Labels



DK-11202 | 300 labels/roll
62mm x 100mm



DK-11201 | 400 labels/roll
29mm x 90mm

DK-11209 | 800 labels/roll
29mm x 62mm



DK-11204 | 400 labels/roll
17mm x 54mm

DK-11218 | 1,000 labels/roll
24mm x 24mm

DK-11208 | 400 labels/roll
38mm x 90mm

DK-11207 | 100 labels/roll
58mm x 58mm **Film**

- Wide range of labels to choose from.
- Easy to load label rolls.

DK TAPE

NO SMOKING

Continuous Length Paper Tape

White Tape DK-22214 12mm x 30.48m
White Tape DK-22210 29mm x 30.48m
White Tape DK-22205 62mm x 30.48m
White Tape DK-44205 Removable Adhesive (62mm x 30.48m)
Yellow Tape DK-44605 Removable Adhesive (62mm x 30.48m)

DANGER!

Continuous Length Film

White tape DK-22212 62mm x 15.24m
Yellow tape DK-22606 62mm x 15.24m
Clear tape DK-22113 62mm x 15.24m
White tape DK-22211 29mm x 15.24m

Contents

- QL-580N label printer
- 1 x DK11201 (100 standard address labels (29mmx90mm))
- 1 x DK22205 (8m continuous paper tape roll (62mm x 8m))
- Cleaning sheet
- USB cable • AC power cord
- CD-ROM (Software/Driver/User Guide) • Setup guide
- DK rolls supplies guide

OPTIONAL LABEL AND TAPE SUPPLIES

DK LABEL DIE-CUT PAPER LABELS

- Standard Address Labels
DK-11201 400/roll
29mm x 90mm
- Large Address Labels
DK-11208 400/roll
38mm x 90mm
- Small Address Labels
DK-11209 800/roll
29mm x 62mm
- Shipping / Name Badge Labels
DK-11202 300/roll
62mm x 100mm
- Multi-Purpose/Return Labels
DK-11204 400/roll
17mm x 54mm
- File Folder Labels
DK-11203 300/roll
17mm x 87mm
- CD/DVD Labels (Film)
DK-11207 100/roll
58mm x 58mm
- Round Labels (24mm diameter)
DK-11218 1000/roll
- Round Labels (12mm diameter)
DK-11219 1200/roll

DK TAPE CONTINUOUS LENGTH TAPES

- Durable Film Tapes
 - Medium Width Tape
DK-22211
Black Print on White
29mm x 15.24M
 - Wide Tape
DK-22212
Black Print on White
62mm x 15.24M
 - Wide Tape
DK-22606
Black Print on Yellow
62mm x 15.24M
 - Wide Tape
DK-22113
Black Print on Clear
62mm x 15.24M
- Durable White Paper Tapes
 - Narrow Width Tape
DK-22214
12mm x 30.48M
 - Medium Width Tape
DK-22210
29mm x 30.48M
 - Wide Tape
DK-22205
62mm x 30.48M
- Removable Adhesive Paper Tapes
 - Wide Tape
DK-44205
Black Print on White
62mm x 30.48M
 - Wide Tape
DK-44605
Black Print on Yellow
62mm x 30.48M

Contact:

brother
at your side

Brother International (Aust) Pty Ltd

Corporate Web-site: www.brother.com.au Label Printer Web-site: www.brotherlabelprinters.com.au
NSW/ACT: Bldg A 11 Talavera Rd. Macquarie Park NSW 2113 Ph: (02) 9887 4344 Fax: (02) 9870 7234
VIC: 1/733 Whitehorse Rd. Mont Albert VIC 3127 Phone: (03) 9899 4844 Fax: (03) 9899 4833
QLD/NT: 245 Riverside Drive. West End QLD 4101 Phone: (07) 3255 1211 Fax: (07) 3255 1911
SA/TAS: Unit 4, 13 King William Rd. Unley SA 5061 Phone: (08) 8272 1300 Fax: (08) 8272 1199
WA: 117 Great Eastern Highway. Belmont WA 6104 Phone: (08) 9478 1955 Fax: (08) 9277 2177
 All specifications subject to change without notice

QL-580N

Professional Label Printer

Built-in auto cutter

UP TO **300x600 DPI**
Super Fine Mode

UP TO **62mm**
WIDE LABELS

UP TO **68 Labels**
PER MINUTE*
* Standard Address Labels



Always at your side

Technical Information

Hardware

Print Method	Thermal Line Printing
Maximum Label Width	62 mm
Maximum Print Width	59 mm
Printable Label Length	12.7mm - 1 metre (Raster), 25.4mm - 1m (ESC/P)
Maximum Print Resolution	300 x 600 dpi Super Fine Mode
Maximum Print Speed	110 mm / sec 68 labels/minute*
Maximum Number Prints	1-9999, 1-999 (P-touch Template)
Auto Cutter	Built-in durable auto cutter
Roll Size Detection	Yes
Interfaces	USB, RS-232C, 10/100 BASE-TX Wired Ethernet
Dimensions	133mm(W) x 240mm(D) x 143mm(H)
Weight	1.23kg (without DK roll)
Power	Internal Switched Power Supply
Colour	Black

Software and Firmware

Template Transfer	Yes
Max templates	99 Templates or 2048KB
Label Editing Software	Win: P-touch Editor ver. 5.0, P-touch Address Book ver. 1.1, Bpac Mac: P-touch Editor ver. 5.0
Command Types	Raster, ESC/P, Label Template
Barcode Support	Software side: CODE39, CODE128, UCC/EAN-128(GS1-128), ITF(I-2/5), CODABAR (NW-7), UPC-A, UPC-E, EAN13(JAN13), EAN8, ISBN-2/EAN13 AddOn2), ISBN-5/EAN13 AddOn5), POSTNET, Laser Bar Code, GS1 DataBar(RSS)(GS1 DataBar Omnidirectional, GS1 DataBar Truncated, GS1 DataBar Stacked, GS1 DataBar Stacked Omnidirectional, GS1 DataBar Limited, GS1 DataBar Expanded, GS1 DataBar Expanded Stacked), PDF417 (Standard, Truncate, Micro), QR Code(Model 1, Model 2, Micro), Data Matrix(ECC200 Square, ECC200 Rectangular), MaxiCode(Model2, Model3, Model4, Model5) Machine side: CODE39, CODE128, UCC/EAN-128(GS1-128), ITF(I-2/5), CODABAR (NW-7), UPC-A, UPC-E, EAN13(JAN13), EAN8, GS1 DataBar(RSS)(GS1 DataBar Omnidirectional, GS1 DataBar Truncated, GS1 DataBar Stacked, GS1 DataBar Stacked Omnidirectional, GS1 DataBar Limited, GS1 DataBar Expanded, GS1 DataBar Expanded Stacked), PDF417(Standard, Truncate, Micro), QR Code(Model 1, Model 2, Micro), Data Matrix (ECC200 Square, ECC200 Rectangular), MaxiCode

Direct Connection

Add-in for Microsoft	Word, Outlook, Excel
Database compatibility	csv, txt, mdb, xls, sql server
Special printing	Rotated printing, Vertical printing, Mirror printing
Time & Date Stamp	PC Generated

System Requirements

Operating System PC	Windows 2000 Pro / XP / Windows Vista® / Windows Server® 2003
Memory (RAM)	128MB or more, Vista: More than 512MB
Hard Disk Free Space	70MB or more
Interface	USB 1.1 or later, RS-232 9 pin D-Sub, 10/100 BASE-TX Wired Ethernet
Monitor	SVGA with high colour graphics card
Other	CD-ROM drive for installation
Operating System MAC	Mac OS X 10.3.9 - 10.5
Memory (RAM)	128MB or more
Hard Disk Free Space	100MB or more
Interface	USB 1.1 or later, 10/100 BASE-TX Wired Ethernet
Monitor	More than 256 colours
Other	CD-ROM drive for installation

*At 300 x 300 dpi using 4 line address label, text only

The QL-580N Professional Label Printer is the newest addition to the Brother range. It combines ease of use with the highest quality specification.

High quality label printing

The QL-580N Professional Label Printer is designed to fit neatly onto your desk without occupying much space, and connects easily via USB or Network to your PC or Mac. Its high print resolution makes it perfect for printing quality logos, images, and text onto your labels.

Durable automatic cutter

The durable heavy-duty cutter makes this label printer suitable for printing many labels one after another, and printing small batches of labels for later use.

Network ready

The QL-580N is network-ready, allowing everyone in the office to print labels from the same printer. Everyone can benefit from becoming well-organised with neatly labelled storage areas, projects, and desk spaces.



QL-580N Highlights

- Quick and effective** - prints up to 68 labels per minute*
- High quality** - with amazing 300 x 600dpi resolution printing
- Versatile** - prints labels up to 62mm wide
- Professional** - with built-in heavy-duty automatic label cutter
- Easy to operate** - print directly from MS Word, Excel, or Outlook
- Desk space saving** - new small footprint design saves desk space
- Flexible** - now network-ready, perfect for sharing

Value for money with:

- Free** - sophisticated label design software
- Free** - 100 x DK Standard Address labels
- Free** - 8m DK Continuous label roll (62mm wide)



* Based on standard address labels

LABEL DESIGN SOFTWARE

Print labels directly from Brother's easy-to-use labelling software

Included in the box with all our Brother Label Printers is our sophisticated labelling design software - free of charge! This software is very easy to use and is perfect for both novices and experts. Brother's powerful label-editing software lets you easily create simple labels, and also helps you design highly customised labels with barcodes, tables, images, logos, automatic time and date and a lot more.

Snap mode

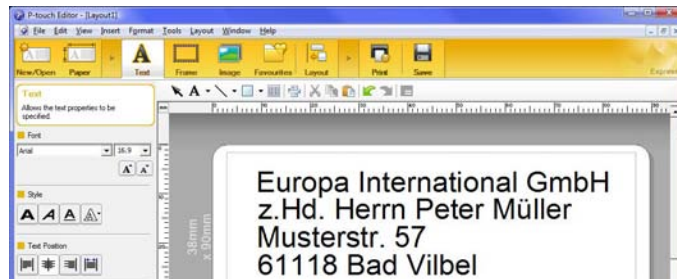
The simplest solution available – ever – for printing professional-looking labels.

- 1 Write the required text for your label in the Snap function
- 2 And click print!

That's it. Professional-looking labels are that quick and simple.

Express mode

Brother also knows that sometimes you prefer to print a more customised label with frames, images, screen grabs, logos or similar to get an even more professional look. This type of label can be created easily using the Express mode of the Brother software. Express mode gives you access to all the main functions for creating personalised and professional-looking labels, displayed in a very easy to understand way.



Professional mode

For users who require even more specific and customised information to be presented on their labels, such as barcodes, tables, sequential numbering and more, the Professional mode is the perfect option.

The Professional mode is more advanced than the Express mode, and gives you access to an extensive range of professional features in an easy to understand way.

WHY NETWORK A LABEL PRINTER

A network label printer allows for multiple users to be connected and use one machine. All users on the LAN network – whether they are PC or Mac users – can access the networked Brother QL-580N label printer. The advantages of this include:

- Low initial purchase cost
- Saves space
- Easy to install and manage
- Ability to print remotely from another location
- Print different sized labels with out having to change rolls – this is possible if there is a series of label printers connected to the network and each machine holds a different roll type.

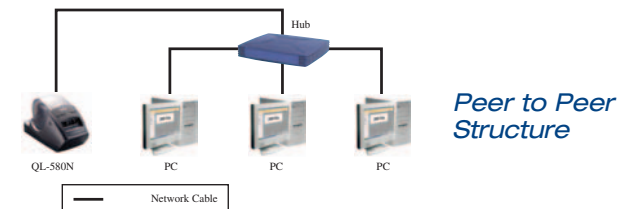
EASY TO INSTALL

Installing the Brother Label Printer onto the Network:

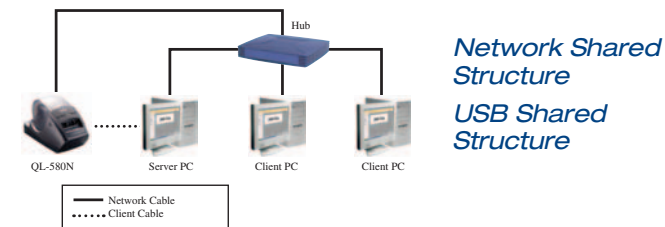
It is simple to install the Brother QL-580N onto a network using the user-driven installation software.

Network Structures

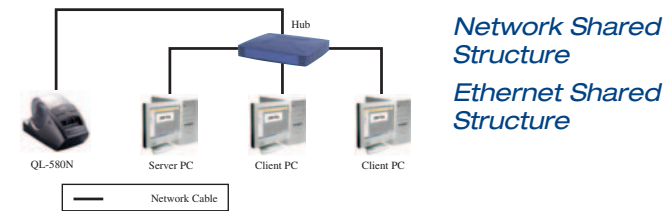
The Brother Label Printer can be connected to network via a peer to peer structure or using a Network Shared Structure (USB or Ethernet model).



Peer to Peer Structure



*Network Shared Structure
USB Shared Structure*



*Network Shared Structure
Ethernet Shared Structure*

Machine photos are for illustrative purposes

EASY TO MANAGE

The Network management tool provides a range of tools to make it easier to manage the Brother QL-580N label printer. The tools include:

Printer Status Monitor

- The Brother QL-580N offers network monitors for easy management of label printers on the network.

Error Checking

- Local USB connection – an error message appears immediately on-screen to identify the error that has occurred.
- Network connection – The 3 colour LED flashes red to indicate an error has occurred and is then followed shortly after with an error message.

BRAdmin Network Management Software

BRAdmin Light (Available on Included CD)

BRAdmin Light is a utility used in the initial set up of Brother Network connected devices. It allows the user to search for printers, view printer status and configure basic network settings. BRAdmin Light allows for easy access of vital information on the QL-580N.

BRAdmin Professional (For Windows)

(Available via FREE download from: <http://solutions.brother.com>)

BRAdmin Professional is a more advanced management of network connected Brother devices. It includes BRAdmin Light functions as well as allowing the Administrator to access multi-printer settings. Using BRAdmin Professional the Administrator can access the following information:

- Device (Status, Speed, Emulation, Memory, Template and Node Type)
- Printer (Media Status, Media Type, Total Cut Count, Total Print Length, etc)
- Printer Set Up (Emulation, Power, and Baud Rate)
- Operation Controls (User Reset, Factory Reset, Print Setting Lists and Cancel Jobs)

Web BRAdmin

(Available via FREE download from: <http://solutions.brother.com>)

Web BRAdmin is the web based utility for the advanced management of WAN network connected Brother devices. It has the same functionality as BRAdmin Professional.

TIP: The QL-580N uses the same network management interface as the Brother range of inkjet and laser printers, making it easier to integrate the machine into your current system.

