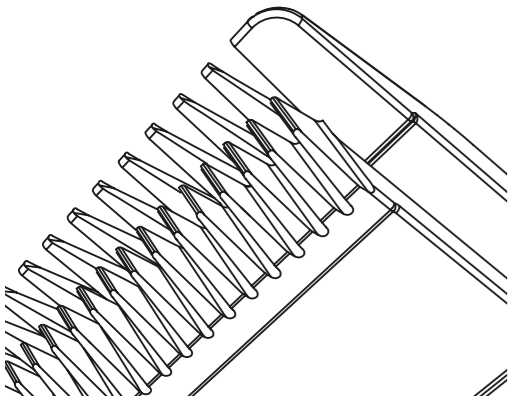




# Lithium•Ion™

Detachable Blade Trimmer  
Recortadora con láminas  
desmontable



## Operating Instructions for the Lithium Ion Grooming Kits Instrucciones de operación de la recortadora recargable

Models 9854L, 9860L, 9876L

### 5-YEAR LIMITED WARRANTY

Valid in U.S.A. Only

If your Wahl product fails to operate satisfactorily within five (5) years from the date of original purchase or receipt as a gift, Wahl will, at our option, repair or replace it and return it to you FREE OF CHARGE. Do not return this product to store where purchased. Products needing repair under this warranty should be returned with postage prepaid to:

Wahl Clipper Corp.  
Attn: Repair Department  
3001 Locust Street  
Sterling, Illinois 61081

Include a note describing the defect and the date of original purchase or receipt as a gift (if in warranty). Products out of warranty will be repaired at our standard repair charges. This warranty is void and no repair or replacement will be made under this warranty or otherwise if: (1) The product is modified in any manner or repaired by anyone other than Wahl Clipper Corporation or Wahl authorized service center. (2) The product has been used commercially or subjected to unreasonable use. This warranty gives you specific legal rights and you may also have other rights which may vary from state to state. No other written express warranty is given. Any implied warranty, including any warranty of merchantability which may arise from purchase or use, is limited to the year period provided in this express warranty. Some states may not allow such limitation, so it may not apply to you. No responsibility is assumed for incidental or consequential damages of any type, or for the use of unauthorized attachments. Some states may not allow the exclusion or limitation of incidental or consequential damages, so the limitation or exclusion may not apply to you. Outside U.S.A., check with store for Wahl authorized distributor's warranty.

For more information or Product Registration, visit [www.wahltrimmers.com](http://www.wahltrimmers.com)

© 2014 Wahl Clipper Corporation  
Part No. 91668-1301  
Printed in U.S.A.

## SPECIAL FEATURES:

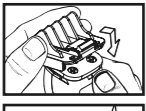
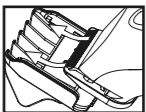
Your trimmer has been designed with several advanced features to help you get perfect results every time you trim. Your trimmer may be used to neatly trim goatees, beards, mustaches, neckline, sideburns around the ears and eyebrows, or anywhere you may need grooming. It also makes a great all-around family trimmer for mini haircuts and touch ups between trips to the barber or to clean up the shape of the neck.

■ **Soft-Touch Grip (9854L, 9860L)** allows you to hold the trimmer in a comfortable position for precision trimming.

■ **An Ergonomic Shape and Gripping Horizontal Bars (9876L)** for added comfort, designed so you always hold the trimmer in a comfortable position for precision trimming. The shape also provides optimum trimming visibility.

■ **A Rotating Head (9876L).** The trimming head rotates 360 degrees, providing two trimming positions. This allows you to achieve the optimum ergonomic relationship between the hand, the trimmer and the face. Rotate the head to the desired position as follows. With the switch in the "OFF - 0" position, depress the lock button and rotate the head clockwise or counterclockwise 360 degrees.

■ **A 6-Position Trimming Guide** makes achieving a consistent trim easy every time. The guide can be removed (providing a seventh cutting position) and reattached without changing the preset cutting length, so once you have found the perfect length, there's no guesswork in achieving it every trim. The trimming guide is a two-piece assembly, consisting of a base and a comb. It should not be disassembled. To attach the guide, simply slide it on at a slight angle and press



## IMPORTANT SAFEGUARDS

When using your electrical appliance, basic precautions should always be followed, including the following:

**READ ALL INSTRUCTIONS AND SAFEGUARDS BEFORE USING THIS TRIMMER.**

## DANGER

To reduce the risk of death or injury by electric shock:

1. Do not reach for an appliance that has fallen into water. Unplug immediately from the outlet.
2. Do not use while bathing or in a shower.
3. Do not place or store appliance where it can fall or be pulled into a tub or sink. Do not place in or drop into water or other liquid.
4. Except when charging, always unplug this appliance from the electrical outlet immediately after using.
5. Always unplug this appliance before cleaning.
6. (Rechargeable unit only.) Unplug the charger before using trimmer.

## WARNING

To reduce the risk of burns, electrical shock or injury to persons:

### TRIMMING AND EDGING YOUR BEARD

The following are suggested trimming steps and trimmer positions. You may find different procedures work better for you.

1. Comb your beard in the direction that it grows to help reveal stray hairs that may be longer than the others.
2. Attach the 6-position trimming guide to trim and taper your beard. Begin with the guide set at a long trimming length. Trim toward your chin in smooth, overlapping strokes, following the lay of your beard. If you trim against the way your beard naturally lays, the trimmer will cut the hair much shorter and the result may be patchy.



shorter and the result

#1	Stubble Length (2 mm)
#2	Short (4 mm)
#3	Medium Short (6 mm)
#4	Medium (8 mm)
#5	Medium Long (10 mm)
#6	Long (12 mm)

Adjust the trimming guide to progressively shorter settings until you reach the desired length of beard. You may wish to set the trimming guide attachment to cut closer near the ear and down under the chin, changing to a longer setting toward the front of the face and point of your chin. When the trimming guide is removed, it will remain at its last length setting until you change it.

Always be sure the trimming guide is locked solidly into the desired position before you start to trim.

3. To cut the outline of your beard, remove the trimming guide. Starting under your chin and working back toward your jawbone and ears, cut the outer perimeter of your beard underneath the jawbone. Continue the line all the way up to the ears and hairline.



4. Accentuate your beard line by using the trimmer in a downward motion. Start at the line you've created

1. Do Not Crush, Disassemble, Heat Above 100°C (212°F), or Incinerate the appliance, due to Risk of Fire, Explosion, or Burns.
2. This power unit is intended to be correctly orientated in a vertical or floor mount position.
3. Close supervision is necessary when this appliance is used by, on, or near children or disabled persons.
4. Use this appliance only for its intended use as described in this manual. Do not use attachments not recommended by the manufacturer.
5. Never operate this appliance if it has a damaged cord or plug, if it is not working properly, if it has been dropped or damaged, or if it has been dropped into water. Return the appliance to Wahl Clipper Corporation for examination and repair.
6. Keep the cord away from heated surfaces.
7. Only insert approved transformer plug or travel plug into charger receptacle.
8. Do not use outdoors or operate where aerosol (spray) products are being used or where oxygen is being administered.
9. Never drop or insert any object into any

and, working from the chin back toward the ears, trim the area right under your beard line.

5. Define the upper part of your beard using the same technique.



6. For a neater finished look, replace attachment blade to the detail blade forward. Use this blade for fine, detail trimming anywhere it is needed, such as at the sideburns near the ears, goatees, etc.



### DETAILING NECKLINES, SIDEBURNS, MUSTACHES & BEARDS using trimmer head.

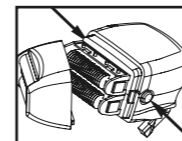
Slowly move trimmer downward on desired areas to neatly trim and shape.

**TRIMMING ARM & LEG HAIR using trimmer head.** Simply glide the trimmer over your arm or leg until desired hair length is achieved. The first time you trim the hair, start by using a longer setting on the guide comb on the trimmer, then use progressively shorter settings if a shorter length is preferred.

### TRIMMING CHEST & STOMACH using trimmer head.

Glide the trimmer over your torso region, in an upward motion until desired hair length is achieved. For tight, scratch-free trimming, use the #1 guide comb.

**FOR THE CLOSEST LOOK,** after trimming, attach the shaver head. The shaver makes for the perfect tool to groom the total body. Using the same technique, as mentioned prior, you can groom wherever you feel a need. Shave against hair growth while stretching the skin. After every use, remove the shaver foil by pressing both side buttons and carefully using cleaning brush provided.



- opening.
10. Do not use this appliance with a damaged or broken blade or trimming attachment, as facial injury may occur.
11. Always attach plug to appliance first, then to outlet.
12. Use only the charger supplied by the manufacturer to recharge.

To disconnect, turn unit "OFF - 0," then remove plug from outlet.

## SAVE THESE INSTRUCTIONS For Household Use Only

## RECHARGING

1. This trimmer is conveniently designed for household use. It should be allowed to charge 1 hour before first use.
2. Remove the trimmer, recharging transformer and accessories from the packing material.
3. Connect the transformer to the trimmer. BE SURE TRIMMER IS IN THE "OFF - 0" POSITION WHEN CHARGING.
4. Plug the recharging transformer into any convenient electrical outlet at the correct voltage.
5. When trimmer is low in power, it should be connected to the transformer and plugged into an outlet to assure maximum power is available when it is next used. This transformer is designed to completely charge the battery without overcharging. Do not use the trimmer while it is charging.
6. The battery will take approximately 60 minutes to charge. The Lithium Ion Trimmer also has quick charge capability.
7. Insert only recharging transformer plug supplied by the manufacturer into charger receptacle.

### TRIMMING PRIVATE AREAS with the trimmer & detailer head.

1. Volume reduction using trimmer head. Attach guide comb and select a long trimming length. Begin trimming, starting at the top and working down. Use progressively closer settings to get the "look" and length you prefer.
2. For hard to reach or tight areas, use the detailer head. Always pull skin taut. Then slowly move the detailer through area to trim until desired look is accomplished.
3. Shave in your private areas by gently shaving in the desired area and always keep the skin taut.

### TRIMMING NOSE HAIR using detailer head.

Make sure the nasal passages are clean. Slowly move the detailer in and out of each nostril, no more than 1/4-inch deep.

### TRIMMING EAR HAIR using detailer head.

Make sure the outer areas of the ears do not contain any wax. Hold the ear flat with one hand and carefully insert detailer no more than 1/4-inch into the outer ear.

**CAUTION:** Do not insert the detailer or any other foreign object into the inner ear. For hair growing on the outside of the ear, simply move the detailer slowly along the edges of the ear.

### TRIMMING EYEBROWS using detailer head.

Slowly move detailer to neatly trim stray hairs. For precise, even trimming, slowly move the detailer closer or farther away from eyebrows to achieve desired length. Do not press against brow as it may remove too much hair.

### FADE CUT using a T-Blade

- 1 Start at the temple and cut all the way around the head to establish the ultimate location of the fade line. Always cut against the grain for the shortest cut. Don't force the blade through the hair. Let the trimmer do the work.
- 2 Next, cut around the head again and up the nape of the neck to the fade line, brushing away the cut hair as you go. Pull the scalp taut with the thumb for the closest cut. Turn the trimmer upside down when necessary to keep cutting against the grain. Make sure both sides of the

## TROUBLESHOOTING

If your Trimmer does not seem to take a charge, check the following before returning it for repair:

1. Check outlet to make sure it is working by plugging in another appliance.
2. Make sure the outlet simply is not connected to a light switch which turns the power at the outlet off when lights are turned off.
3. Be sure the trimmer is properly connected to the recharging transformer, all connections are secure and the switch on the trimmer is turned "OFF - 0."
4. If your electricity is connected to a master power switch, we suggest the trimmer be disconnected from the charger anytime the master switch is off. Leaving the unit plugged into a dead outlet or an unplugged charger will drain the battery.
5. If trimmer does not run and it is completely charged, turn the unit "ON - 1" and pinch or push the blades manually. (Oil may have dried out between the blades, so they may be temporarily stuck together.)

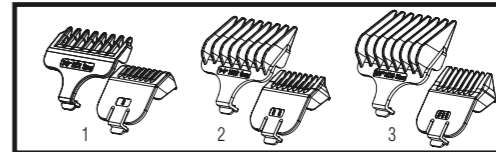
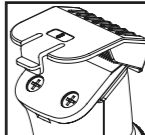
## LITHIUM-ION BATTERY REPLACEMENT, CLIPPER DISPOSAL AND RECYCLING:

- For battery replacement send the entire, intact clipper unit to: Wahl Annex 3001 North Locust, P.O. Box 578, Sterling, IL 61081
- Do not attempt to remove the battery. Lithium-Ion batteries can explode, catch fire, and/or cause burns if disassembled, damaged, or exposed to water or high temperatures.
- If you choose not to replace the battery, the entire, intact clipper unit must be disposed. Do not attempt to remove the battery for disposal. Lithium-Ion batteries may be subject to local disposal regulations. Many locations prohibit disposal in standard waste receptacles. Check your local laws and regulations.
- For recycling contact a government recycling agency, waste disposal service, retailer, or visit online recycling sources, such as [www.batteryrecycling.com](http://www.batteryrecycling.com) or [www.rbrcc.org](http://www.rbrcc.org).

- head are even.
- 3 For the top of the head, cut with the grain using the individual guide comb attachments. The smaller the number of the comb, the shorter the cut. Comb or brush the hair as you cut for an even end result.
- 4 To complete the fade, blend the hair at the fade line by trimming up and out across the line and against the grain all the way around the head. Then, repeat all around, turning the trimmer upside down and cutting downward. The final objective is to blend the hair so there is no real line, just a perfect fade from bald to very short hair. You can achieve this by using the #1 individual guide comb attachment. Continue combing and cutting until you achieve the desired effect.
- 5 To create a part, pick a spot off-center. Pull the scalp tight and with the end of the blade perpendicular to the head, move the trimmer back and forth to cut a line. Comb through it and cut again to make sure the cut is precise.

### TRIMMING WITH ATTACHMENT COMBS

Your Trimmer includes three trimming attachments; stubble, medium and long. The stubble guide has 1 bar, the medium-cut attachment has two bars and the long-cut attachment has three bars. These attachments are ideal for blending, tapering and defining beards, as well as for achieving a "close trim" stubble look around the face. To use the attachments, go with the hair direction. To achieve closer looks, go against the hair direction.



## CARING FOR YOUR TRIMMER OILING BLADES

For best results, put one or two drops of Wahl Clipper Oil on the blades only when necessary, or approximately once a month. Motor bearings are permanently lubricated—do not attempt to oil.

When oiling your trimmer, turn the trimmer "ON - 1," hold the unit with the blades facing DOWN and squeeze one or two drops of oil onto the blades. Wipe off excess oil with soft cloth.

### NOTICE—DO NOT OVER OIL!

Excessive oiling or application of liquids will cause damage if allowed to seep back into motor.

## BLADE CARE

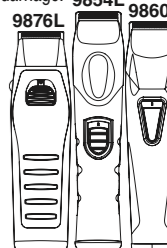
Trimmer blades have precision-hardened, ground and lapped cutting teeth. Blades should be handled carefully and never bumped or used to cut dirty or abrasive material. Never rinse the blades with water, or the blades may rust. Clean with the included brush.

## CLEANING/STORAGE

Before storing your trimmer, use the cleaning brush to whisk any loose hairs from the unit and the blades. For units with a soft-touch grip, use a damp cloth to wipe down the body of the trimmer, taking care not to get the blades wet. Store unit in such a manner so that blades are protected from damage.

When the trimmer is not in use, the trimmer guide/blade guard attachment should be in place to protect the blades.

This appliance should be stored in a manner where it is not subjected to Crushing, Heating above 100°C (212°F), or Incineration.



## SERVICE AND REPAIR

If you have problems with your trimmer, send it prepaid with a note explaining the problem to:

Wahl Clipper Corporation  
Attn: Repair Department  
3001 Locust Street  
Sterling, IL 61081  
Telephone (800) 767-9245

For products purchased outside the United States, contact your distributor.

## 60 Day Money Back Guarantee!

If for any reason within 60 days of purchase of your Wahl® trimmer you are not satisfied with your trimmer and would like a refund, just return your trimmer, together with the sales receipt, to the retailer from whom you purchased it. Wahl will reimburse all retailers who accept trimmers within 60 days of purchase. If you have any questions regarding this money-back guarantee, please call 1-800-767-9245 in the United States.

